

MODEL MX175B

NOTICE

ALL PART NUMBERS CONTAINED IN THIS CATALOGUE ARE COMPRISED OF TEN DIGITS. WHEN ORDERING, PLEASE ADD TWO ZEROS TO THE END OF EACH PART NUMBER REQUIRED TO CONVERT THE TEN DIGITS INTO THE NEW TWELVE DIGIT NUMBERS.

This Parts List is for the exclusive parts for the MX175B. Please refer to MX125 Parts List for the parts not listed in this publication.

2

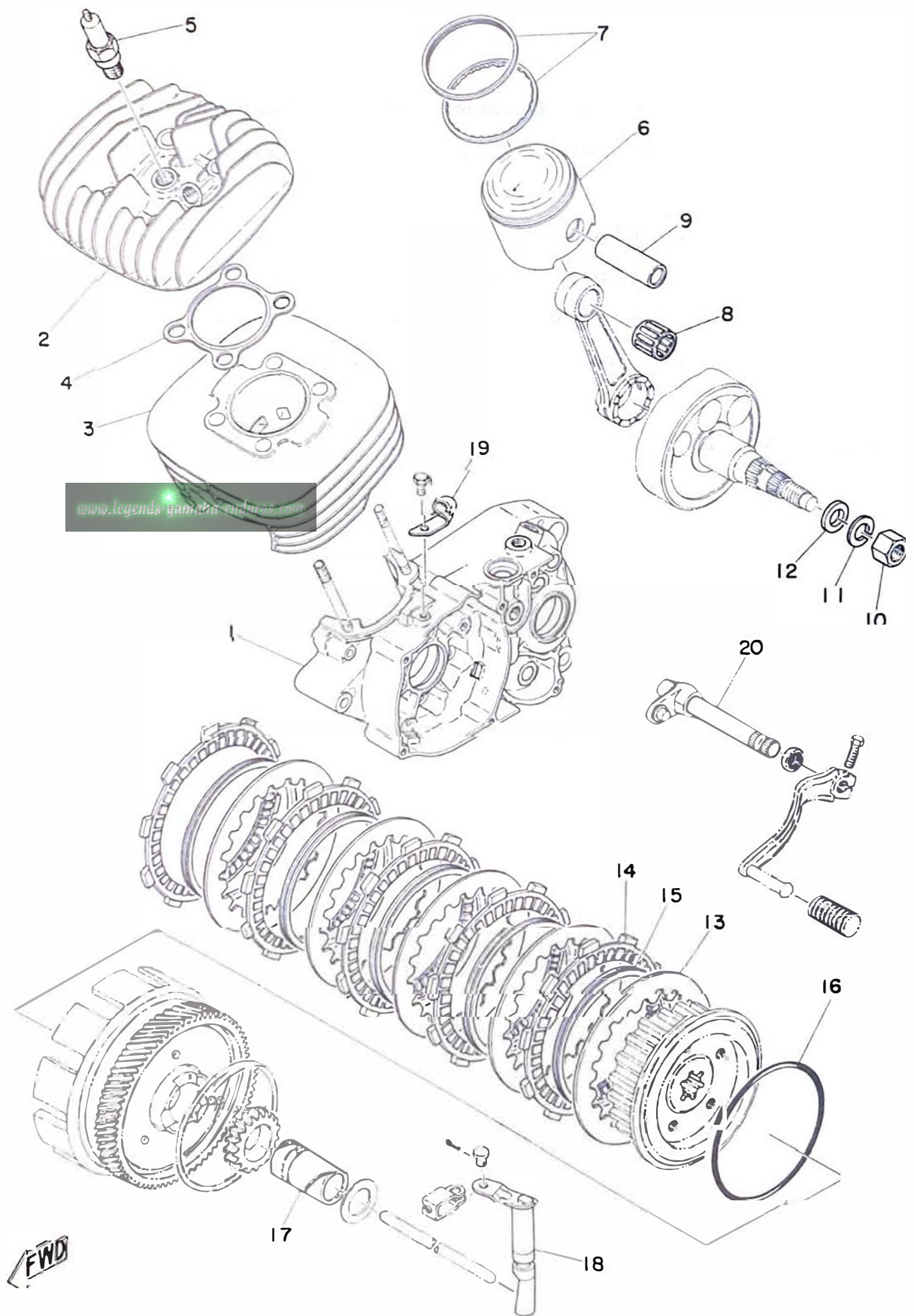
www.legends-yamaha-enduros.com

CONTENTS

Fig. 1	Crankcase • Cylinder • Piston • Clutch	1
Fig. 2	Carburetor	5
Fig. 3	Exhaust	9
Fig. 4	C. D. I Magneto	11
Fig. 5	Front Fork • Fuel Tank • Seat	13
Fig. 6	Fender • Wheel	17
Fig. 7	Electrical	19

NUMERICAL INDEX

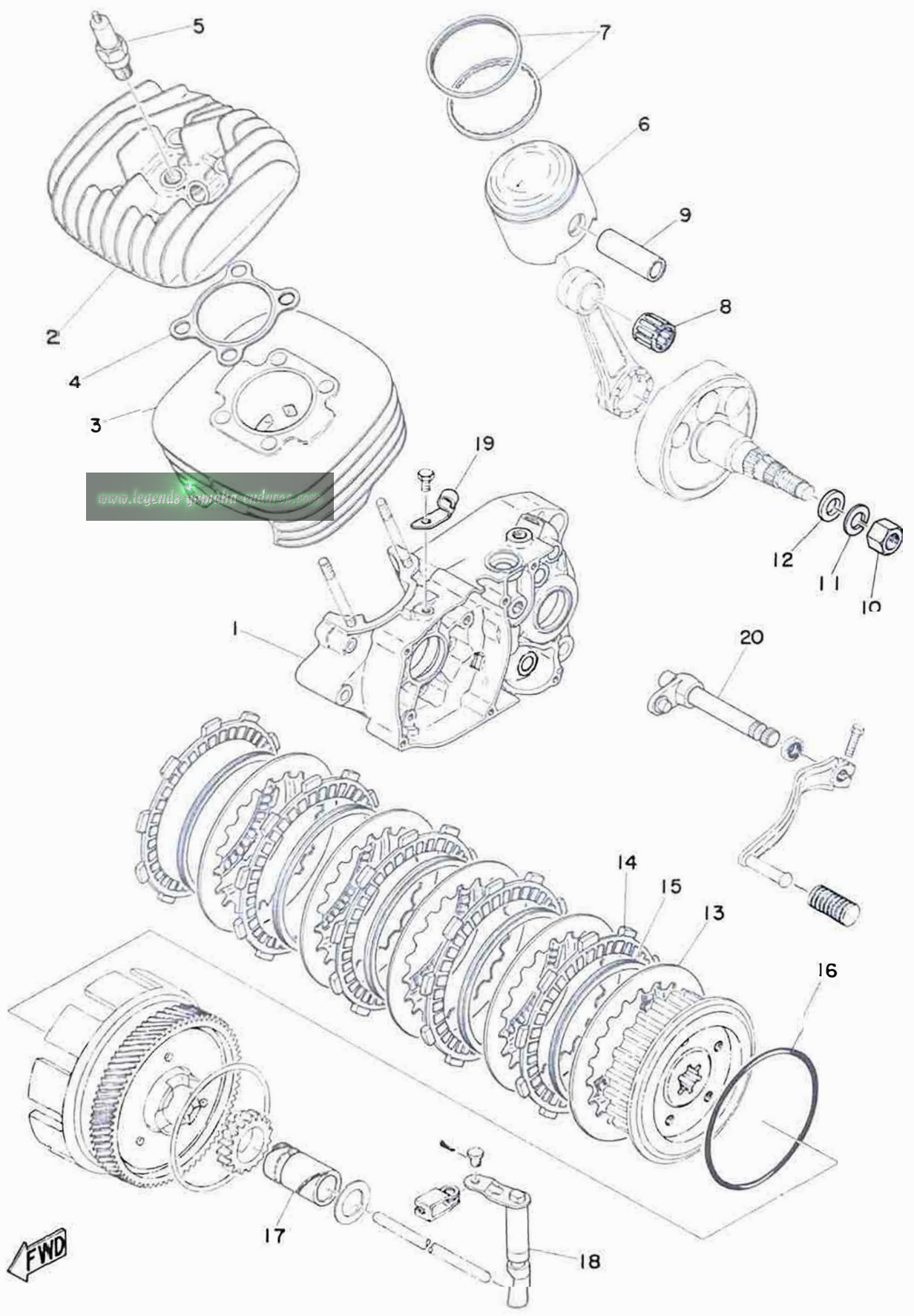
Fig. 1 CRANKCASE · CYLINDER · PISTON · CLUTCH



CRANKCASE · CYLINDER · PISTON · CLUTCH

Ref. No.	Parts No.	Description	Q'ty	Applicable Machine No.	Remarks
1- 1	401-15111-03	CASE, crank left	1		
1- 2	455-11111-00	HEAD, cylinder	1		
1- 3	455-11311-01	CYLINDER	1		
1- 4	251-11181-00	GASKET, cylinder head	1		
1- 5	94701-00074	PLUG, spark (B-8EV)	1		
1- 6	455-11631-02-96	PISTON (65.96mm STD)	} U.R 1		
	455-11631-02-98	PISTON (65.98mm STD)			
	455-11635-02	PISTON (66.25mm 1st O.S)	1		Alternate Parts
	455-11636-02	PISTON (66.50mm 2nd O.S)	1		Alternate Parts
	455-11637-02	PISTON (66.75mm 3rd O.S)	1		Alternate Parts
	455-11638-02	PISTON (67.00mm 4th O.S)	1		Alternate Parts
1- 7	455-11610-00	PISTON RING SET (STD)	1		
	455-11610-10	PISTON RING SET (1st O.S)	1		Alternate Parts
	455-11610-20	PISTON RING SET (2nd O.S)	1		Alternate Parts
	455-11610-30	PISTON RING SET (3rd O.S)	1		Alternate Parts
	455-11610-40	PISTON RING SET (4th O.S)	1		Alternate Parts
1- 8	93310-21679	BEARING, con-rod small end ...	1		
1- 9	251-11633-00	PIN, piston	1		
1-10	214-11555-01	NUT, crank shaft	1		
1-11	92901-12100	WASHER, spring	1		
1-12	214-11557-01	WASHER 1	1		
1- 0-1	455-16301-00	CLUTCH ASS'Y	1		
1-13	336-16324-00	. PLATE, clutch	5		
1-14	437-16321-00	. PLATE, friction	5		
1-15	137-16367-00	. RING, cushion	5		
1-16	93210-98202	. O-RING (5.33-97.76)	1		
1-17	443-16176-01	COLLAR, distance	1		
1-18	401-16382-02	AXLE, push lever	1		

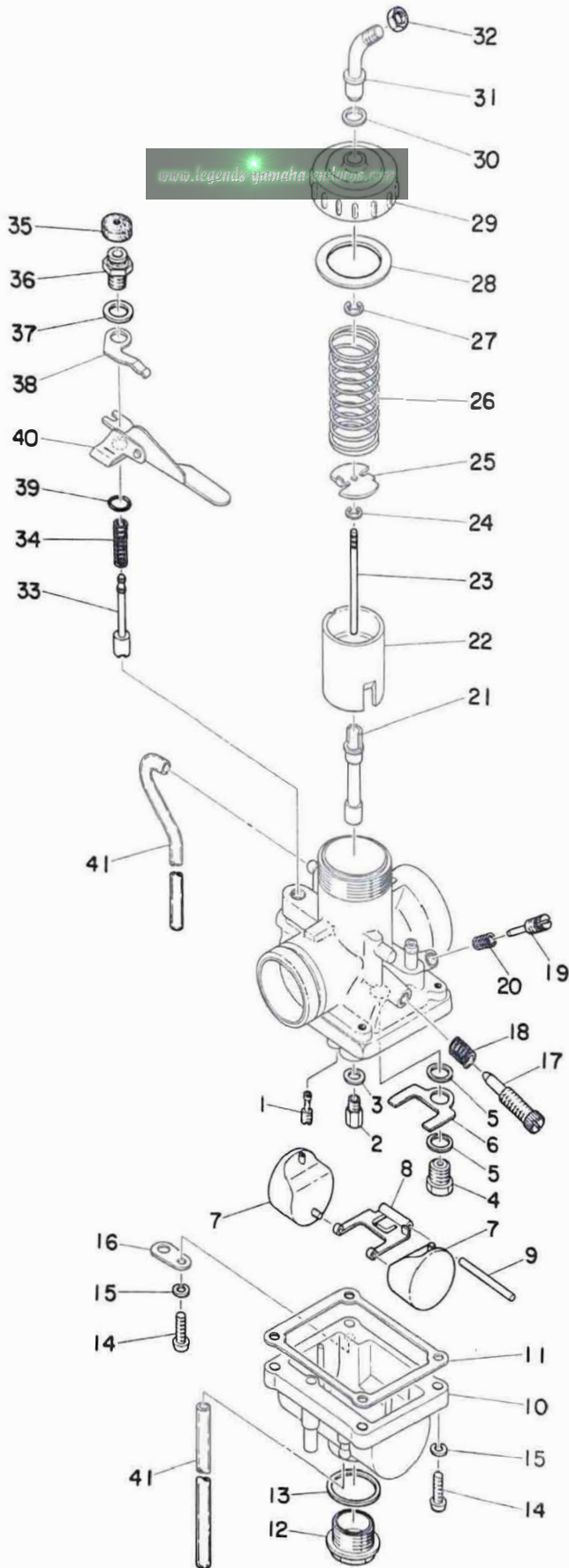
Fig. 1 CRANKCASE · CYLINDER · PISTON · CLUTCH



CRANKCASE · CYLINDER · PISTON · CLUTCH

Ref. No.	Parts No.	Description	Q'ty	Applicable Machine No.	Remarks
1-19	401-15441-02	HOLDER, clutch wire	1		
1-20	401-18102-00	CHANGE SHAFT 2 ASS'Y	1		
ALTERNATE PARTS					
1- 0-2	455-11630-01	PISTON ASS'Y (STD)	1		
	455-11630-11	PISTON ASS'Y (1st O.S)	1		
	455-11630-21	PISTON ASS'Y (2nd O.S)	1		
	455-11630-31	PISTON ASS'Y (3rd O.S)	1		
	455-11630-41	PISTON ASS'Y (4th O.S)	1		

Fig. 2 CARBURETOR

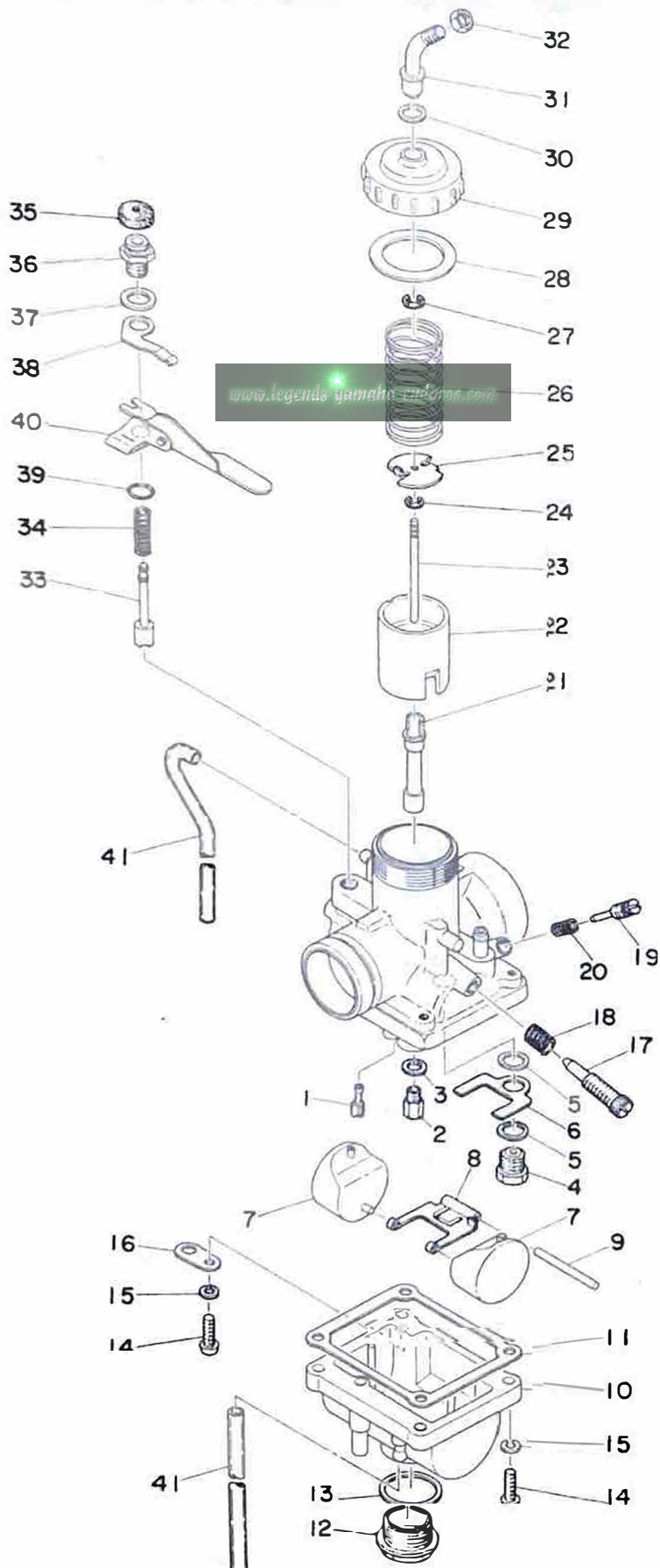


FWD

CARBURETOR

Ref. No.	Parts No.	Description	Q'ty	Applicable Machine No.	Remarks
2- 0-1	455-14101-61	CARBURETOR ASS'Y	1		
2- 1	193-14142-70	. JET, pilot (#70)	1		
2- 2	137-14143-28	. JET, main (#140)	} U.R 1		STD
	137-14143-30	. JET, main (#150)			
	137-14143-32	. JET, main (#160)			
2- 3	346-14153-70	. WASHER, main jet	1		
2- 4	168-14190-25	. VALVE SEAT ASS'Y (#2.5)	1		
2- 5	214-14195-00	. WASHER, valve seat	2		
2- 6	402-14146-00	. PLATE	1		
2- 7	280-14185-00	. FLOAT	2		
2- 8	280-14187-00	. ARM, float	1		
2- 9	137-14186-00	. PIN, float	1		
2-10	402-14181-00-33	. BODY, float chamber	1		
2-11	360-14184-00	. GASKET, float chamber	1		
2-12	278-14115-00	. PLUG, screw	1		
2-13	278-14117-00	. WASHER, screw plug	1		
2-14	98503-04015	. SCREW, panhead	4		
2-15	92901-04100	. WASHER, spring	4		
2-16	132-14146-00	. PLATE	1		
2-17	275-14122-00	. SCREW, throttle	1		
2-18	137-14133-00	. SPRING, throttle stop	1		
2-19	152-14123-00	. SCREW, air adjusting	1		
2-20	127-14134-00	. SPRING, air adjusting	1		
2-21	278-14141-28	. NOZZLE, main (N-8)	1		
2-22	360-14112-25	. VALVE, throttle (#2.5)	1		
2-23	438-14116-04	. NEEDLE (5EI4-2)	1		
2-24	137-14137-00	. CLIP	1		
2-25	401-14136-00	. SEAT, spring	1		

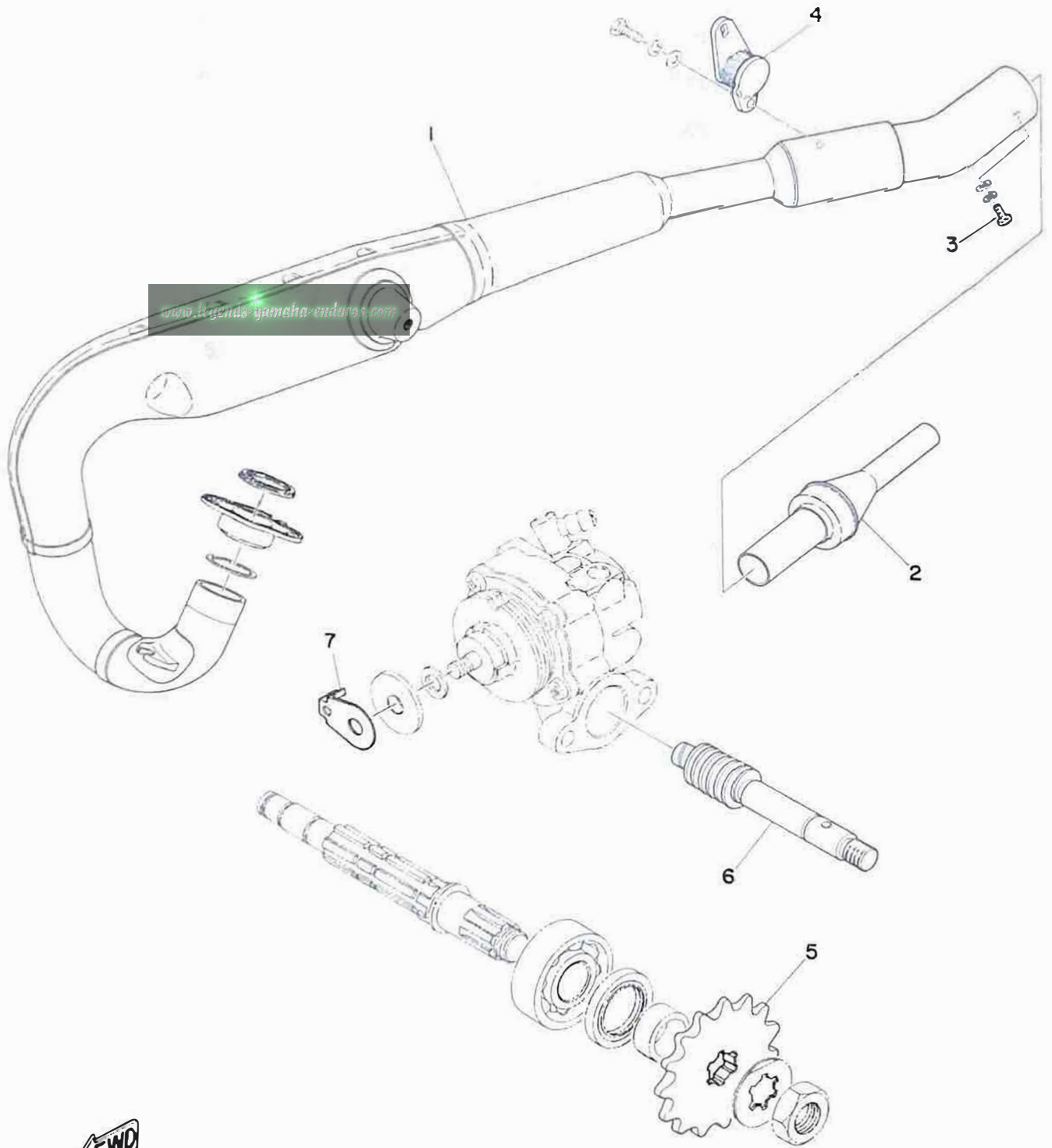
Fig. 2 CARBURETOR



CARBURETOR

Ref. No.	Parts No.	Description	Q'ty	Applicable Machine No.	Remarks
2-26	248-14131-00	. SPRING, throttle valve	1		
2-27	363-14137-00	. CLIP	1		
2-28	246-14126-00	. PACKING	1		
2-29	401-14158-00-33	. TOP, mixing chamber	1		
2-30	363-14198-00	. PACKING	1		
2-31	363-14155-00	. TUBE, guide wire	1		
2-32	127-14161-00	. NUT	1		
2-33	278-14171-00	. PLUNGER, starter	1		
2-34	256-14135-00	. SPRING, plunger	1		
2-35	802-14173-00	. COVER, plunger cap	1		
2-36	278-14174-00	. CAP, plunger	1		
2-37	132-14179-00	. WASHER, starter lever	1		
2-38	402-14178-00	. PLATE, starter lever	1		
2-39	93220-09001	. O-RING (1.78-9.25)	1		
2-40	278-14175-00	. LEVER, starter	1		
2-41	183-14197-01	. PIPE, air vent	2		

Fig. 3 EXHAUST

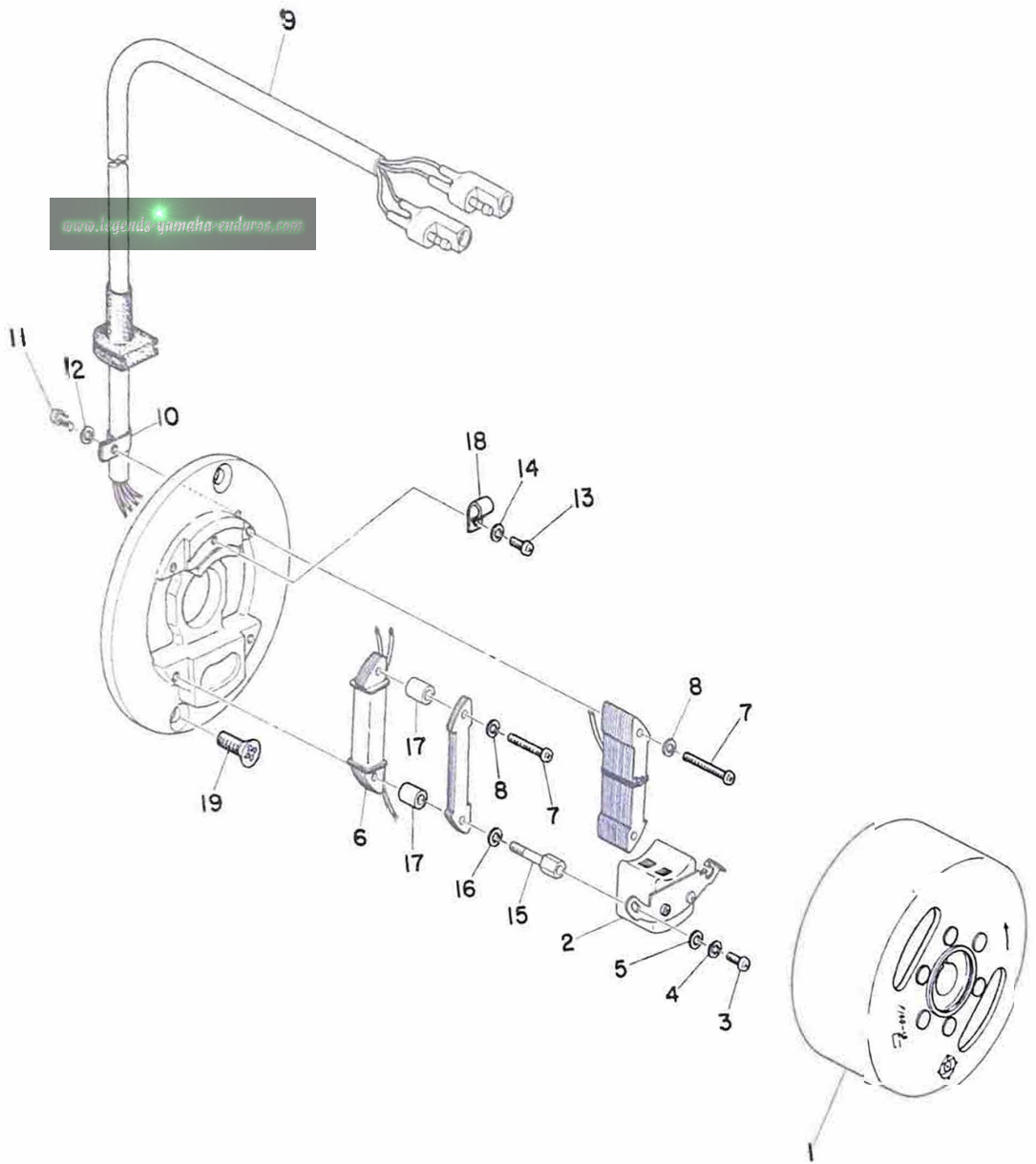


← FWD

EXHAUST

Ref. No.	Parts No.	Description	Q'ty	Applicable Machine No.	Remarks
3- 1	455-14610-00	EXHAUST PIPE ASS'Y	1		
3- 2	455-14752-00	. PIPE, outlet	1		
3- 3	91201-06010	. BOLT	1		
3- 4	363-14782-10	STAY, muffler	1		
3- 5	174-17461-30	SPROCKET, drive (13T)	} U.R. 1		STD
	174-17461-40	SPROCKET, drive (14T)			
	174-17461-50	SPROCKET, drive (15T)			
3- 6	278-13175-00	SHAFT, worm	1		
3- 0-1	455-13101-00	OIL PUMP ASS'Y	1		
3- 7	402-13146-00	. COVER	1		

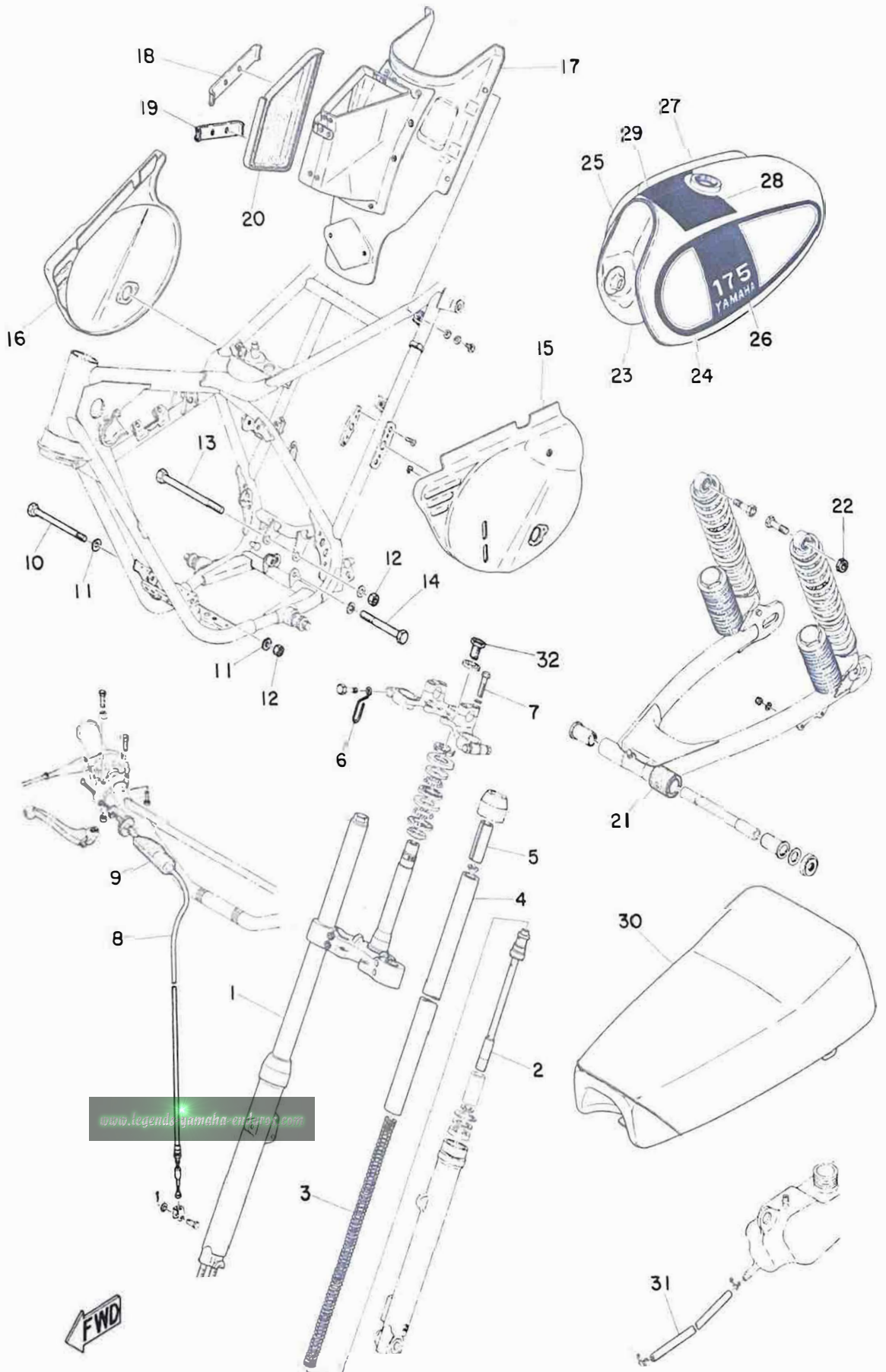
Fig. 4 C.D.I MAGNETO



C.D.I MAGNETO

Ref. No.	Parts No.	Description	Q'ty	Applicable Machine No.	Remarks
4- 0-1	455-85500-12	C.D.I MAGNETO ASS'Y	1		
4- 1	455-85550-11	. ROTOR ASS'Y	1		
4- 2	455-85543-10	. PULSER 1	1		
4- 3	98501-04008	. SCREW, panhead (4-8)	2		
4- 4	92901-04100	. WASHER, spring	2		
4- 5	92901-04200	. WASHER, plain	2		
4- 6	455-85541-10	. COIL, charge	1		
4- 7	98501-04028	. SCREW, panhead (4-28)	2		
4- 8	92901-04100	. WASHER, spring	2		
4- 9	455-85515-10	. WIRE, lead	1		
4-10	109-81328-10	. CLAMP, lead	1		
4-11	98501-04008	. SCREW, panhead (4-8)	1		
4-12	92901-04100	. WASHER, spring	1		
4-13	98501-04008	. SCREW, panhead (4-8)	1		
4-14	92901-04100	. WASHER, spring	1		
4-15	455-85513-10	. BOLT, special	2		
4-16	92901-04200	. WASHER, plain	2		
4-17	455-85514-10	. SPACER	2		
4-18	363-85528-10	. CLAMP, lead	1		
4-19	92701-06012	SCREW, flathead	2		

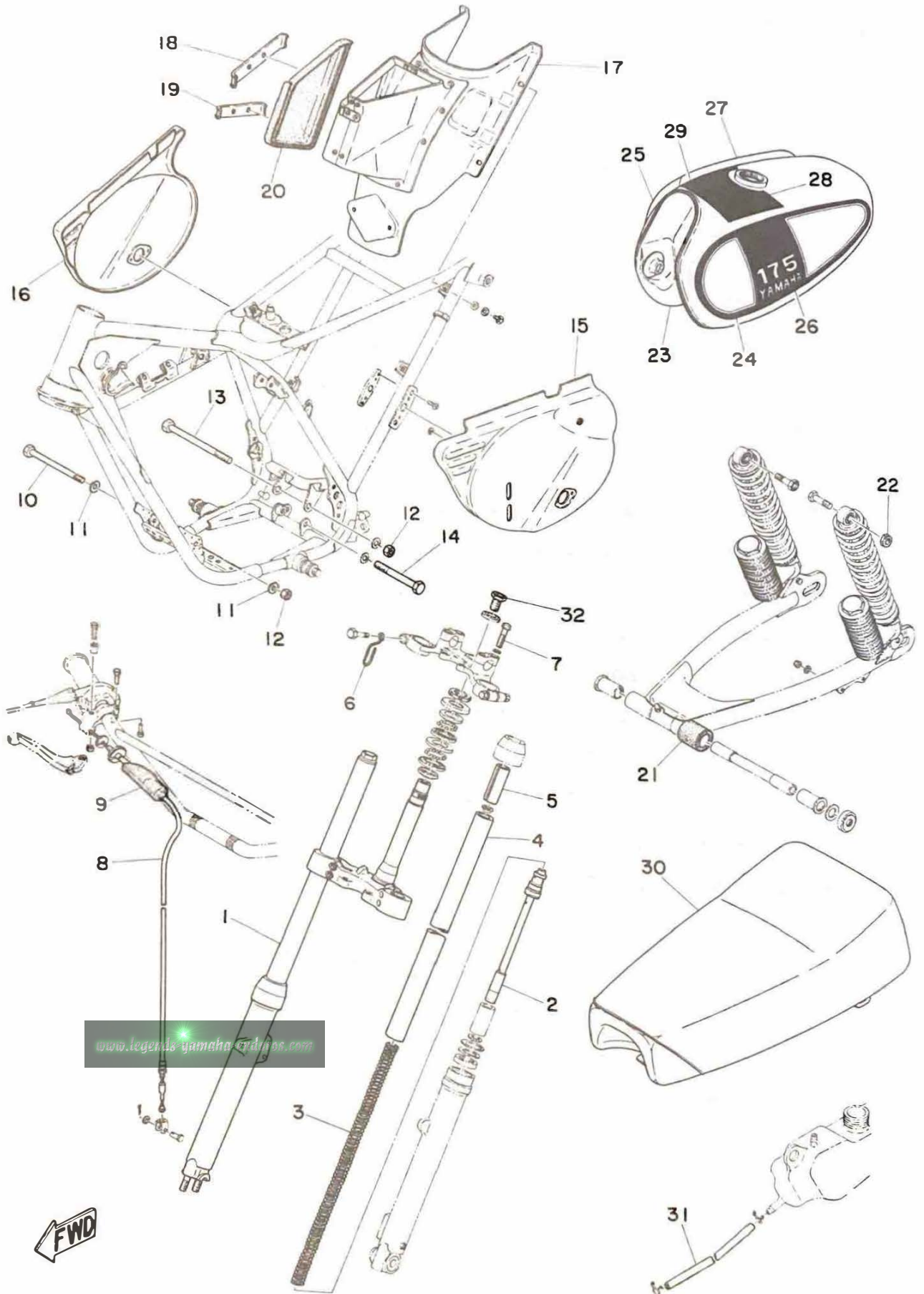
Fig. 5 FRONT FORK · FUEL TANK · SEAT



FRONT FORK · FUEL TANK · SEAT

Ref. No.	Parts No.	Description	Q'ty	Applicable Machine No.	Remarks
5- 1	401-23101-00	FRONT FORK ASS'Y	1		
5- 2	401-23170-00	. CYLINDER COMP.	2		
5- 3	401-23141-00	. SPRING, fork	2		
5- 4	401-23124-00	. TUBE, inner	2		
5- 5	401-23118-00	. SPACER	2		
5- 6	434-23319-00	HOLDER, wire	1		
5- 7	90101-08131	BOLT	4		
5- 8	401-26341-00	WIRE, brake front	1		
5- 9	382-26372-01	. COVER, lever	1		
5-10	90109-08255	BOLT	1		
5-11	90209-08050	WASHER 1	2		
5-12	90185-08039	NUT U	2		
5-13	90109-08348	BOLT, hexagon	1		
5-14	90109-10346	BOLT, hexagon	1		
5-15	401-21711-00-04	COVER, side left	1		Clean White
5-16	453-21721-00	COVER, side right	1		
5-17	402-21240-00	BOX COMP.	1		
5-18	402-21256-00	. PATCH 1	1		
5-19	402-21257-00	. PATCH 2	1		
5-20	402-21269-00	. SEAL	1		
5-21	443-22151-00	SEAL, guard	1		
5-22	90185-10037	NUT U	1		
5-23	401-24110-00-08	FUEL TANK COMP.	1		Clean White
5-24	455-24244-10	. GRAPHIC, fuel tank 1	1		
5-25	455-24245-10	. GRAPHIC, fuel tank 2	1		
5-26	455-24246-10	. GRAPHIC, fuel tank 3	1		
5-27	455-24247-10	. GRAPHIC, fuel tank 4	1		
5-28	427-24248-10	. GRAPHIC, fuel tank 5	1		

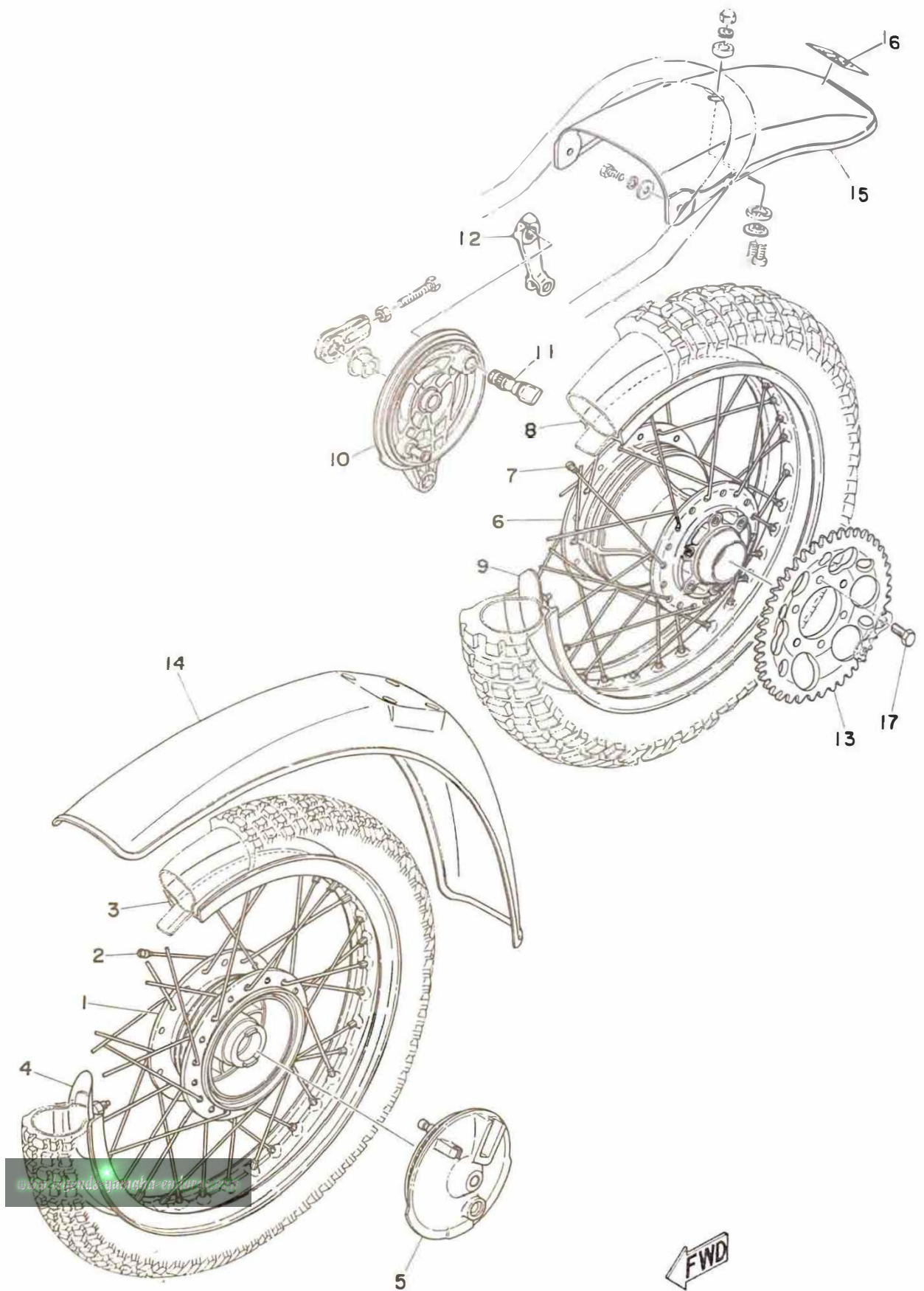
Fig. 5 FRONT FORK · FUEL TANK · SEAT



FRONT FORK · FUEL TANK · SEAT

Ref. No.	Parts No.	Description	Q'ty	Applicable Machine No.	Remarks
5-29	427-24249-10	. GRAPHIC, fuel tank 6	1		
5-30	427-24770-00	SEMI DOUBLE SEAT ASS'Y	1		
5-30-1	401-24771-00	. COVER, semi double seat	1		
5-31	90445-09251	HOSE (5-350)	1		
5-32	90109-14235	BOLT	1		

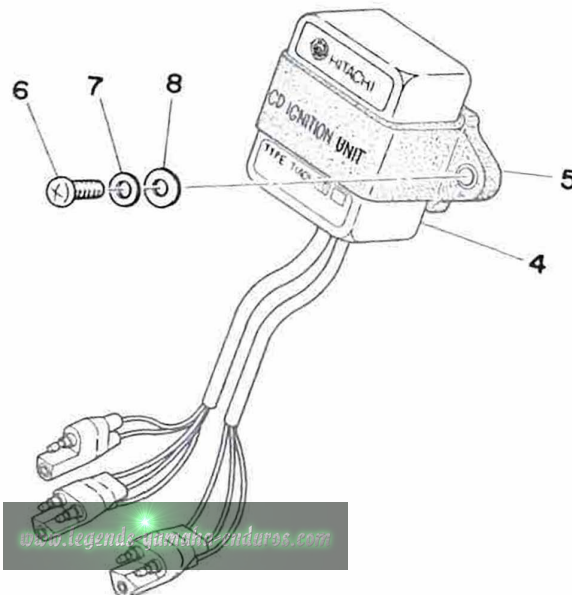
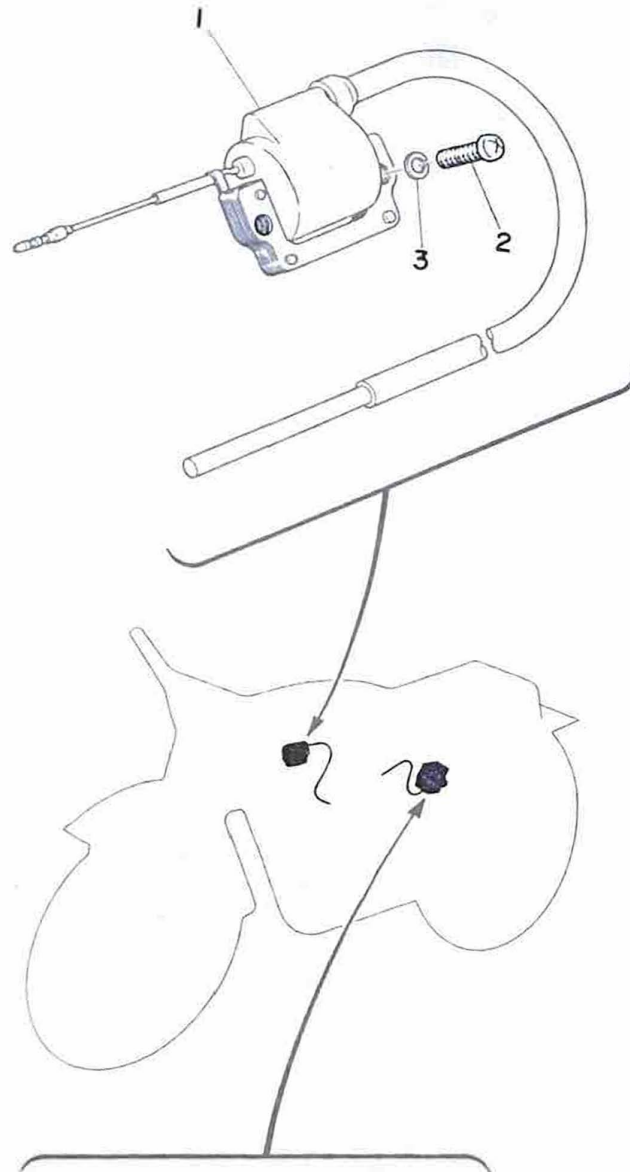
Fig. 6 FENDER · WHEEL



FENDER · WHEEL

Ref. No.	Parts No.	Description	Q'ty	Applicable Machine No.	Remarks
6- 1	248-25111-00-35	HUB, front	1		Silver
6- 2	345-25104-00	SPOKE SET	1s		
6- 3	94416-21128	RIM, front (1.60-21A)	1		
6- 4	214-25194-00	SPACER, bead	2		
6- 5	401-25121-00	PLATE, brake shoe	1		Silver
6- 6	403-25311-00-35	HUB, rear	1		Silver
6- 7	401-25304-00	SPOKE SET	1s		
6- 8	94418-18127	RIM, rear (1.85-18A)	1		
6- 9	214-25394-00	SPACER, bead	2		
6-10	401-25321-00	PLATE, brake shoe	1		Silver
6-11	401-25351-00	CAM, shaft	1		
6-12	431-25355-00	LEVER, cam shaft	1		
6-13	401-25445-00	GEAR, sprocket wheel (45T)	...	U.R 1	STD
	401-25447-00	GEAR, sprocket wheel (47T)	...		
	401-25449-00	GEAR, sprocket wheel (49T)	...		
6-14	453-21511-00	FENDER, front	1		
6-15	453-21611-00	FENDER, rear	1		
6-16	288-21659-00	LABEL, warning	1		
6-17	90109-08027	BOLT	6		

Fig. 7 ELECTRICAL



ELECTRICAL

Ref. No.	Parts No.	Description	Q'ty	Applicable Machine No.	Remarks
7- 1	322-82310-10	IGNITION COIL ASS'Y	1		
7- 2	92501-06025	SCREW, panhead	2		
7- 3	92901-06100	WASHER, spring	2		
7- 4	455-85540-00	C.D.I UNIT ASS'Y	1		
7- 5	363-85540-00	BAND	1		
7- 6	92501-06018	SCREW, panhead	2		
7- 7	92901-06200	WASHER, plain	2		
7- 8	136-22316-00	WASHER, chain case	2		

NUMERICAL INDEX

Ref No.	Parts No.	Ref No.	Parts No.	Ref No.	Parts No.
4-10	109-81328-10	2-40	278-14175-00	5- 8	401-26341-00
2-20	127-14134-00	2- 7	280-14185-00	3- 7	402-13146-00
2-32	127-14161-00	2- 8	280-14187-00	2- 6	402-14146-00
2-16	132-14146-00	6-16	288-21659-00	2-38	402-14178-00
2-37	132-14179-00	7- 1	322-82310-10	2-10	402-14181-00-33
7- 8	136-22316-00	1-13	336-16324-00	5-17	402-21240-00
2-18	137-14133-00	6- 2	345-25104-00	5-18	402-21256-00
2-24	137-14137-00	2- 3	346-14153-70	5-19	402-21257-00
2- 2	137-14143-28	2-22	360-14112-25	5-20	402-21269-00
2- 2	137-14143-30	2-11	360-14184-00	6- 6	403-25311-00-35
2- 2	137-14143-32	2-27	363-14137-00	5-28	427-24248-10
2- 9	137-14186-00	2-31	363-14155-00	5-29	427-24249-10
1-15	137-16367-00	2-30	363-14198-00	5-30	427-24770-00
2-19	152-14123-00	3- 4	363-14782-10	6-12	431-25355-00
2- 4	168-14190-25	4-18	363-85528-10	5- 6	434-23319-00
3- 5	174-17461-30	7- 5	363-85540-00	1-14	437-16321-00
3- 5	174-17461-40	5- 9	382-26372-01	2-23	438-14116-04
3- 5	174-17461-50	2-25	401-14136-00	1-17	443-16176-01
2-41	183-14197-01	2-29	401-14158-00-33	5-21	443-22151-00
2- 1	193-14142-70	1- 1	401-15111-03	6-14	453-21511-00
2- 5	214-14195-00	1-19	401-15441-02	6-15	453-21611-00
1-10	214-11555-01	1-18	401-16382-02	5-16	453-21721-00
1-12	214-11557-01	1-20	401-18102-00	1- 2	455-11111-00
6- 4	214-25194-00	5-15	401-21711-00-04	1- 3	455-11311-01
6- 9	214-25394-00	5- 1	401-23101-00	1- 7	455-11610-00
2-28	246-14126-00	5- 5	401-23118-00	1- 7	455-11610-10
2-26	248-14131-00	5- 4	401-23124-00	1- 7	455-11610-20
6- 1	248-25111-00-35	5- 3	401-23141-00	1- 7	455-11610-30
1- 4	251-11181-00	5- 2	401-23170-00	1- 7	455-11610-40
1- 9	251-11633-00	5-23	401-24110-00-08	1- 0-2	455-11630-01
2-34	256-14135-00	5-30-1	401-24771-00	1- 0-2	455-11630-11
2-17	275-14122-00	6- 5	401-25121-00	1- 0-2	455-11630-21
3- 6	278-13175-00	6- 7	401-25304-00	1- 0-2	455-11630-31
2-12	278-14115-00	6-10	401-25321-00	1- 0-2	455-11630-41
2-13	278-14117-00	6-11	401-25351-00	1- 6	455-11631-02-96
2-21	278-14141-28	6-13	401-25445-00	1- 6	455-11631-02-98
2-33	278-14171-00	6-13	401-25447-00	1- 6	455-11635-02
2-36	278-14174-00	6-13	401-25449-00	1- 6	455-11636-02

www.legends-yamaha-enduros.com



YAMAHA MOTOR CO., LTD.

PRINTED IN JAPAN

First edition Mar., 1974

(LIT-10014-55-01)(455-28198-82)