



YAMAHA

GENUINE

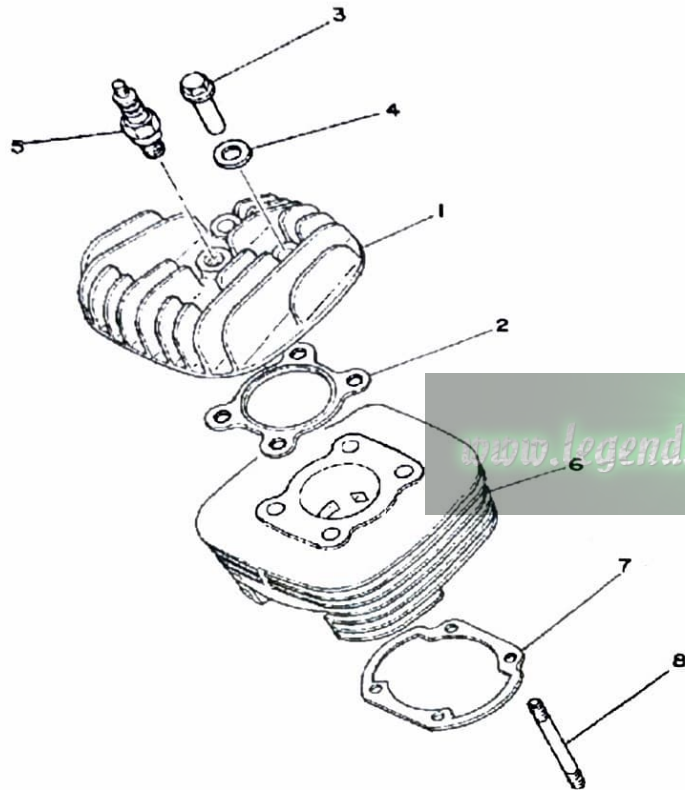
**PARTS CATALOGUE
MOTORCYCLE**

www.legends-yamaha-enduros.com

| | |
|--|-------------------------|
| Bore/Stroke/Number Cylinders/Displacement (cc) | 52 / 46.8mm / 1 / 117cc |
| Compression Ratio/Compression Pressure min-max | 6.7:1 / N/A |
| Cylinder Head | 8 x 1.25 / 2.6 m kg |

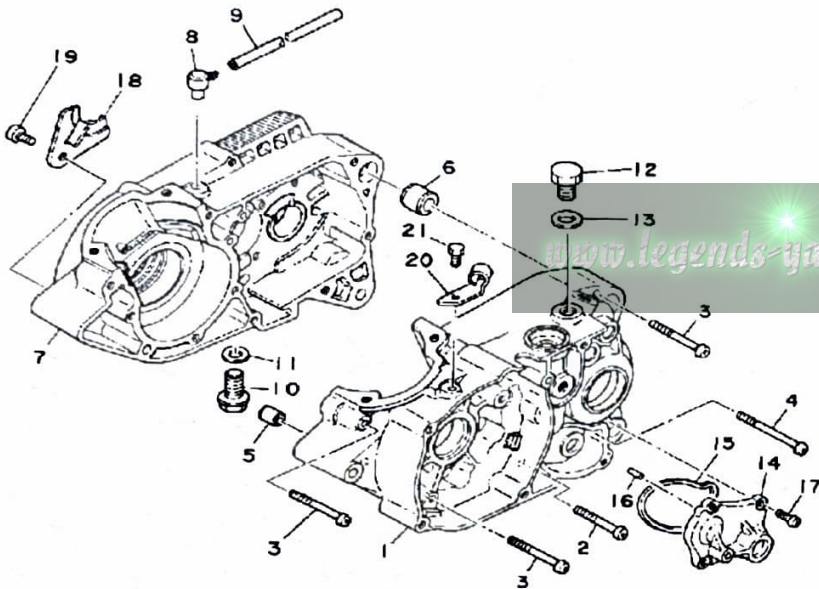
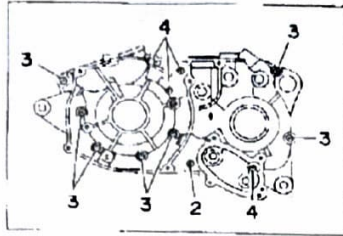
CYLINDER

| Ref. No. | Part Number | Description | Qty | Remarks |
|----------|-----------------|-----------------------------|-----|---------|
| 1 | 1T9-11111-00-00 | HEAD, CYLINDER 1 | 1 | |
| 2 | 304-11181-70-00 | GASKET, CYLINDER HEAD 1 | 1 | |
| 3 | 90179-08303-00 | NUT | 4 | |
| 4 | 90201-12362-00 | WASHER, PLATE | 4 | |
| 5 | NGK-B7ES0-00-00 | NGK B7ES 10PK (94701-00044) | 1 | |
| 6 | 1T9-11311-00-00 | CYLINDER 1 | 1 | |
| 7 | 3UL-11351-00-00 | GASKET, CYLINDER | 1 | |
| 8 | 90116-08065-00 | BOLT, STUD | 4 | |



| | |
|-----------------------------------|--------------------------------------|
| Spark Plug Type | NGK B-7ES |
| Spark Plug Gap / Torque / Cap \$2 | 0.8 ~ 0.8mm / 2.3 m·kg / 5K £2 ± 20% |

| | |
|------------------------------------|-------------------------|
| Initial Engine Number/Frame Number | 3T0-000101 / 3T0-000101 |
|------------------------------------|-------------------------|



CRANKCASE

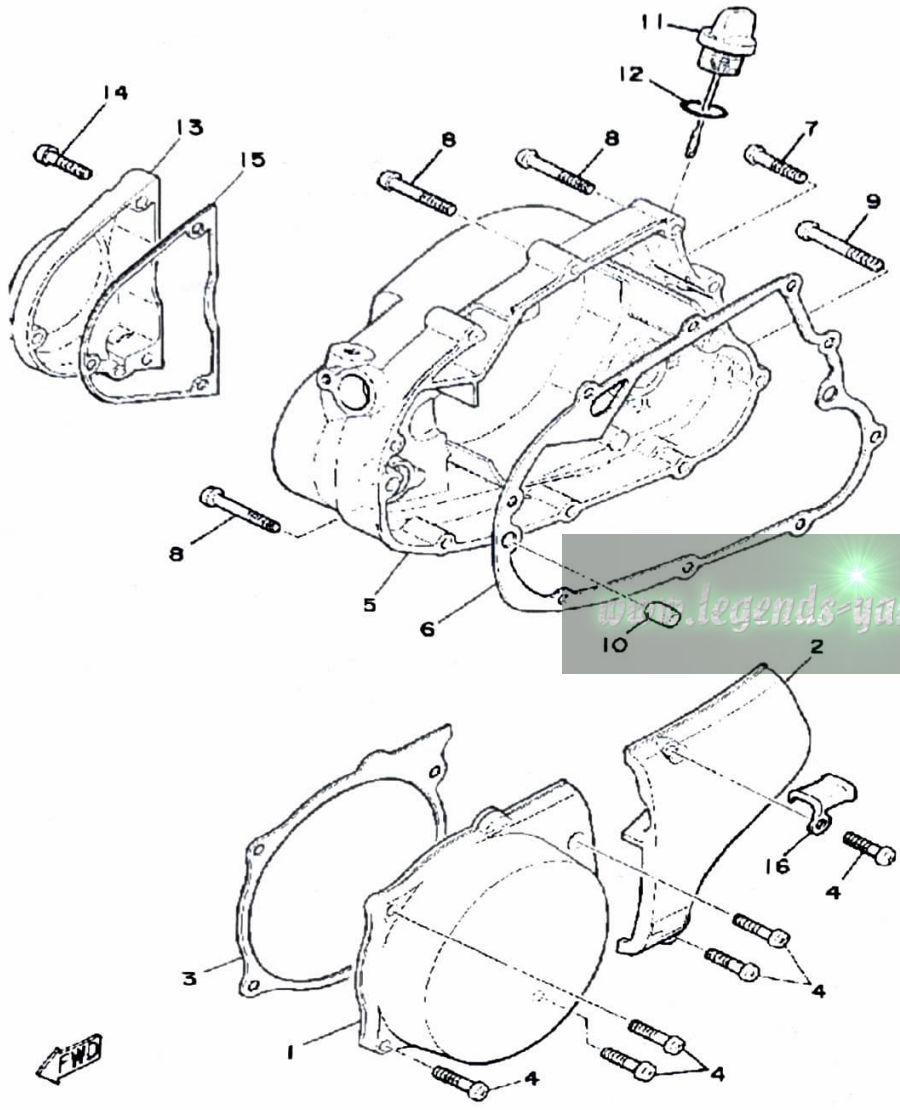
| Ref. No. | Part Number | Description | Qty | Remarks |
|----------|-----------------|---|-----|---------|
| 1 | 1T9-15111-00-00 | CRANKCASE 1 | 1 | |
| 2 | 98580-06040-00 | SCREW, pan head (92501-06040-00) | 1 | |
| 3 | 98580-06550-00 | SCREW PAN HEAD (92503-06050) | 7 | |
| 4 | 92580-06560-00 | SCREW PAN HEAD | 4 | |
| 5 | 99530-10014-00 | PIN, DOWEL | 1 | |
| 6 | 99530-14016-00 | PIN, DOWEL | 1 | |
| 7 | 1T9-15121-01-00 | CRANKCASE 2 | 1 | |
| 8 | 583-15371-00-00 | BREATHER | 1 | |
| 9 | 90445-07176-00 | HOSE | 1 | |
| 10 | 90340-12005-00 | PLUG, DRAIN | 1 | |
| 11 | 90430-12207-00 | GASKET | 1 | |
| 12 | 90340-12004-00 | PLUG, STRAIGHT SCREW | 1 | |
| 13 | 37R-82543-00-00 | GASKET | 1 | |
| 14 | 437-15419-01-00 | COVER, SHIFTER 1 | 1 | |
| 15 | 401-15449-00-00 | RING, RUBBER | 1 | |
| 16 | 93603-12007-00 | PIN, DOWEL | 2 | |
| 17 | 98503-06014-00 | SCREW, PAN HEAD (92502-06016) | 4 | |
| 18 | 304-15128-00-00 | HOLDER | 1 | |
| 19 | 92501-08010-00 | SCREW, PAN HEAD | 1 | |
| 20 | 401-15441-02-00 | HOLDER, CLUTCH CABLE ... | 1 | |
| 21 | 97013-06012-00 | BOLT | 1 | |



| Oiling System | Autoluha |
|----------------------------------|-------------|
| Capacity: Dry | 1.0 Lit. |
| Oil and Filter Change | φ |
| Oil Change | φ |
| Lubricant: Temp above 6°C (40°F) | Yamalube 2* |
| Below 15°C (60°F) | Yamalube 2* |

CRANKCASE COVER

| Ref. No. | Part Number | Description | Qty | Remarks |
|----------|-----------------|-------------------------------------|-----|---------|
| 1 | 1X0-15411-00-00 | COVER, CRANKCASE L | 1 | |
| 2 | 401-15421-00-00 | COVER, CRANKCASE R | 1 | |
| 3 | 1X0-15455-00-00 | GASKET 1 | 1 | |
| 4 | 98580-06020-00 | SCREW | 6 | |
| 5 | 401-15431-00-00 | COVER, CRANKCASE 3 | 1 | |
| 6 | 401-15451-00-00 | GASKET, CRCS COVERCRANKCASE COVER 1 | 1 | |
| 7 | 98580-06030-00 | SCREW PAN HEAD | 3 | |
| 8 | 98580-06040-00 | SCREW, pan head (92501-06040-00) | 5 | |
| 9 | 98580-06545-00 | SCREW PAN HEAD (92503-06045) | 1 | |
| 10 | 99530-10014-00 | PIN, DOWEL | 2 | |
| 11 | 401-15362-00-00 | PLUG, OIL LEVEL | 1 | |
| 12 | 93210-19123-00 | O-RING | 1 | |
| 13 | 1X0-15416-00-00 | COVER, OIL PUMP | 1 | |
| 14 | 98511-06025-00 | SCREW PAN HEAD (92501-06025) | 3 | |
| 15 | 3UL-15456-00-00 | GASKET, OIL PUMP COVER 1 | 1 | |
| 16 | 90461-10016-00 | CLAMP | 1 | |



FWD

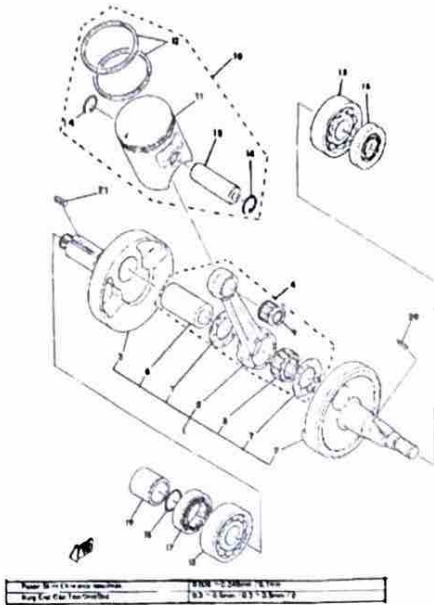
CRANKSHAFT - PISTON

| Ref. No. | Part Number | Description | Qty | Remarks |
|----------|-------------------|--|-----|-----------------|
| 1 | 558-11400-00-00 | CRANKSHAFT ASSEMBLY | 1 | |
| 2 | 558-11412-00-00 | . CRANK 1 | 1 | |
| 3 | (558-11422-00-00) | CRANK 2 | 1 | |
| 4 | 1M7-11650-00-00 | . CONNECTING ROD ASSEMBLY (558-11650-01) | 1 | ASSEMBLY |
| 5 | 1M7-11651-00-00 | . ROD, CONNECTING | 1 | |
| 6 | 5E2-11681-00-00 | . PIN, CRANK 1 | 1 | |
| 7 | 90209-22248-00 | . WASHER | 2 | |
| 8 | 93310-422E7-00 | . BEARING | 1 | |
| 9 | 93310-21403-00 | . BEARING | 1 | |
| 10 | 558-11630-00-00 | PISTON KIT STD | 1 | ASSEMBLY |
| 11 | 558-11631-01-96 | . PISTON STD | 1 | |
| 12 | 558-11610-00-00 | . PISTON RINGSET STD | 1 | |
| 13 | 131-11633-00-00 | . PIN, PISTON | 1 | |
| 14 | 93450-15023-00 | . CIRCLIP | 2 | |
| 15 | 93306-30421-00 | BEARING (B6304C3) | 2 | |
| 16 | 93102-20447-00 | OIL SEAL | 1 | |
| 17 | 93103-28011-00 | OIL SEAL | 1 | |
| 18 | 93210-180A6-00 | O-RING | 1 | |
| 19 | 90387-20175-00 | COLLAR | 1 | |
| 20 | 90280-03017-00 | KEY, WOODRUFF | 1 | |
| 21 | 558-11610-10-00 | PISTON RINGSET 1ST (1ST O.S.) | 1 | ALTERNATE PARTS |
| | 558-11610-20-00 | PISTON RINGSET 2ND (2ND O.S.) | 1 | ALTERNATE PARTS |
| | 558-11610-30-00 | PISTON RINGSET 3RD (3RD O.S.) | 1 | ALTERNATE PARTS |
| | 558-11610-40-00 | PISTON RINGSET 4TH (4TH O.S.) | 1 | ALTERNATE PARTS |
| | 558-11630-10-00 | PISTON KIT 1ST | 1 | ALTERNATE PARTS |

CONTINUED ON NEXT FRAME ►

CRANKSHAFT - PISTON

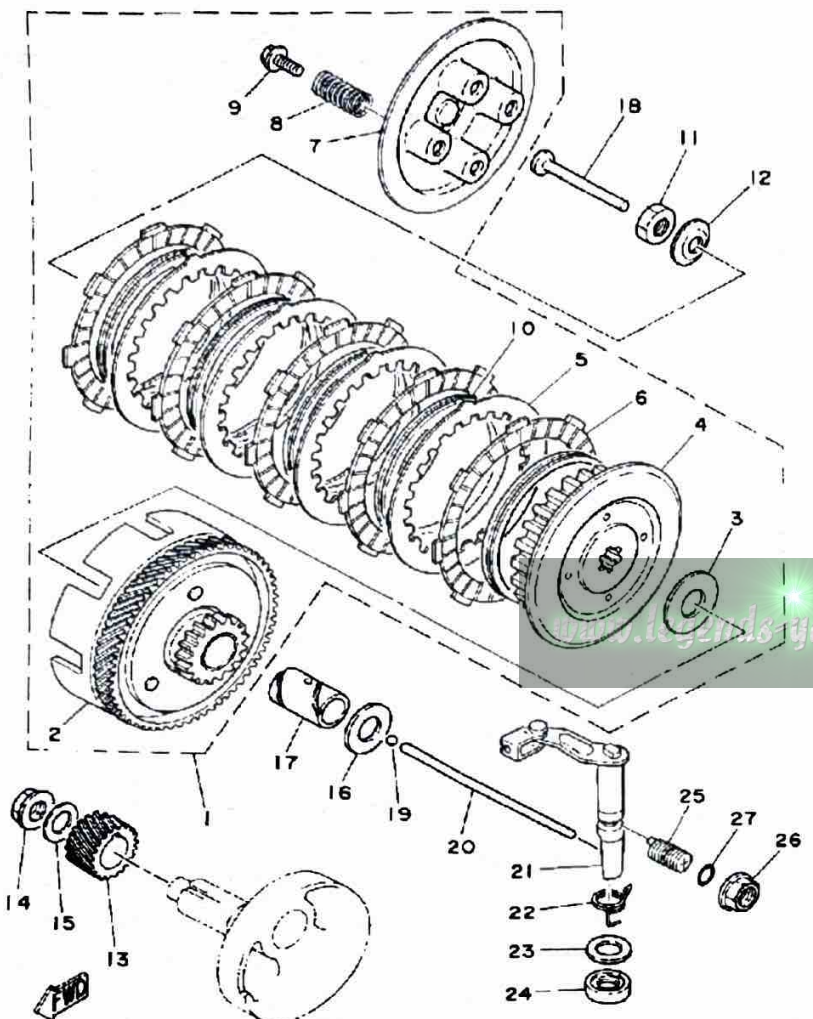
| Ref. No. | Part Number | Description | Qty | Remarks |
|----------|-----------------|---|-----|-----------------|
| 21 | 558-11630-20-00 | PISTON KIT 2ND | 1 | ALTERNATE PARTS |
| | 558-11630-30-00 | PISTON KIT 3RD | 1 | ALTERNATE PARTS |
| | 558-11630-40-00 | PISTON KIT 4TH | 1 | ALTERNATE PARTS |
| | 558-11635-01-00 | PISTON 1 O/S 0.25 (52.25MM 1ST O.S.) | 1 | ALTERNATE PARTS |
| | 558-11636-01-00 | PISTON 2 O/S 0.50 (52.50MM 2ND O.S.) | 1 | ALTERNATE PARTS |
| | 558-11637-01-00 | PISTON 3 O/S 0.75 (52.75MM 3RD O.S.) | 1 | ALTERNATE PARTS |
| | 558-11638-01-00 | PISTON 4 O/S 1.00 (53.00MM 4TH O.S.) | 1 | ALTERNATE PARTS |
| | 90282-05005-00 | KEY, STRAIGHT | 1 | |



www.legends-yamaha-enduros.com

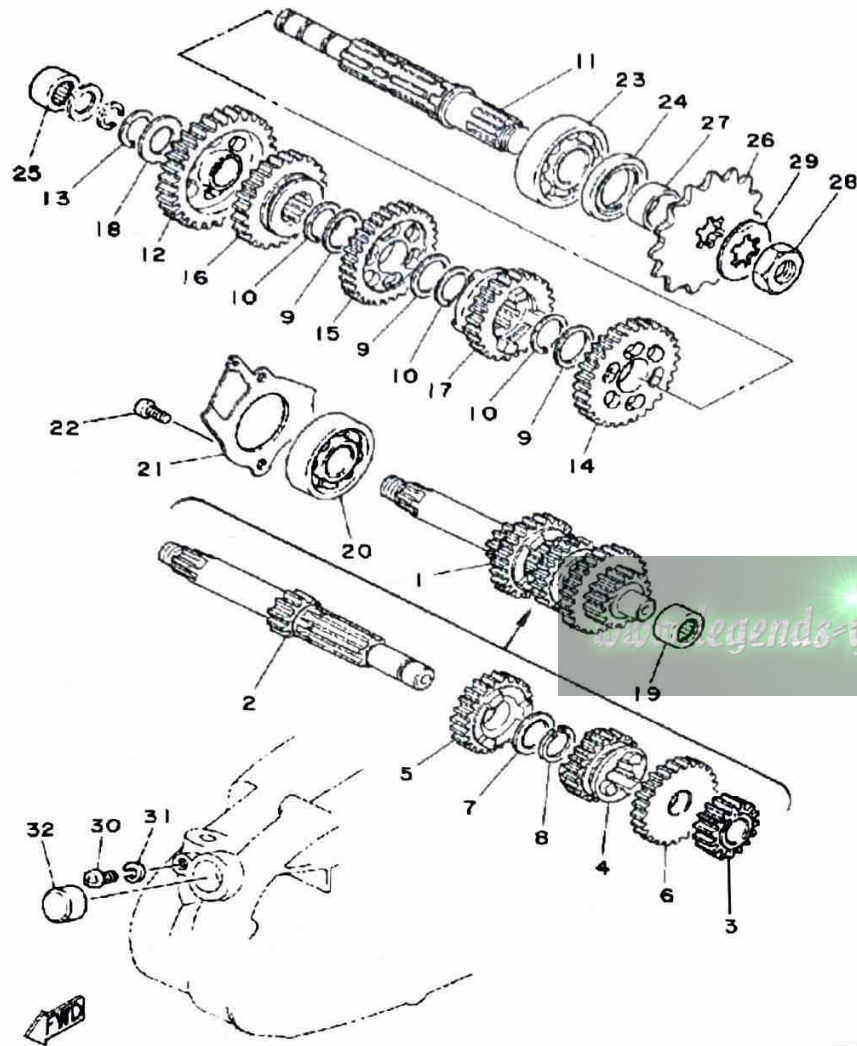
CLUTCH

| Ref. No. | Part Number | Description | Qty | Remarks |
|----------|-------------------|--|-----|---------|
| 1 | (1V1-16301-10-00) | CLUTCH ASSEMBLY | 1 | |
| 2 | 1V1-16150-10-00 | . PRIMARY DRIVEN GEAR COMP. (74T) | 1 | |
| 3 | 131-16154-00-00 | . PLATE, THRUST 1 | 1 | |
| 4 | 1V1-16371-02-00 | . BOSS, CLUTCH | 1 | |
| 5 | 1V1-16324-00-00 | . PLATE, CLUTCH 1 | 4 | |
| 6 | 598-16321-01-00 | . PLATE, FRICTION | 5 | |
| 7 | 598-16351-00-00 | . PLATE, PRESSURE 1 | 1 | |
| 8 | 90501-20125-00 | . SPRING, COMPRESSION | 4 | |
| 9 | 90119-05001-00 | . BOLT, WITH WASHER | 4 | |
| 10 | 1V1-16367-00-00 | . RING, CUSHION | 5 | |
| 11 | 90170-12060-00 | NUT | 1 | |
| 12 | 90208-12015-00 | WASHER, CONICAL SPRING .. | 1 | |
| 13 | 336-16111-00-00 | GEAR, PRIMARY DRIVE (19T) . | 1 | |
| 14 | 90179-12244-00 | NUT, SPEC'L SHAPE | 1 | |
| 15 | 90208-12015-00 | WASHER, CONICAL SPRING .. | 1 | |
| 16 | 90201-17558-00 | WASHER, PLATE | 1 | |
| 17 | 90560-17147-00 | SPACER | 1 | |
| 18 | 137-16356-00-00 | ROD, PUSH 1 | 1 | |
| 19 | 93503-16010-00 | BALL | 1 | |
| 20 | 1X0-16357-00-00 | ROD, PUSH 2 | 1 | |
| 21 | 525-16380-00-00 | PUSH LEVER ASSEMBLY | 1 | |
| 22 | 90508-14132-00 | SPRING, TORSION | 1 | |
| 23 | 90201-14217-00 | WASHER, PLATE | 1 | |
| 24 | 93104-14059-00 | OIL SEAL, SO-TYPE | 1 | |
| 25 | 90149-12097-00 | SCREW | 1 | |
| 26 | 90179-12197-00 | NUT | 1 | |
| 27 | 93210-10096-00 | O-RING | 1 | |



| | |
|--|---------------|
| Clutch Friction Plate Thickness Std ~ Min. | 3.0 ~ 2.7mm |
| Clutch Spring Length Std ~ Min. | 31.5 ~ 30.5mm |

TRANSMISSION

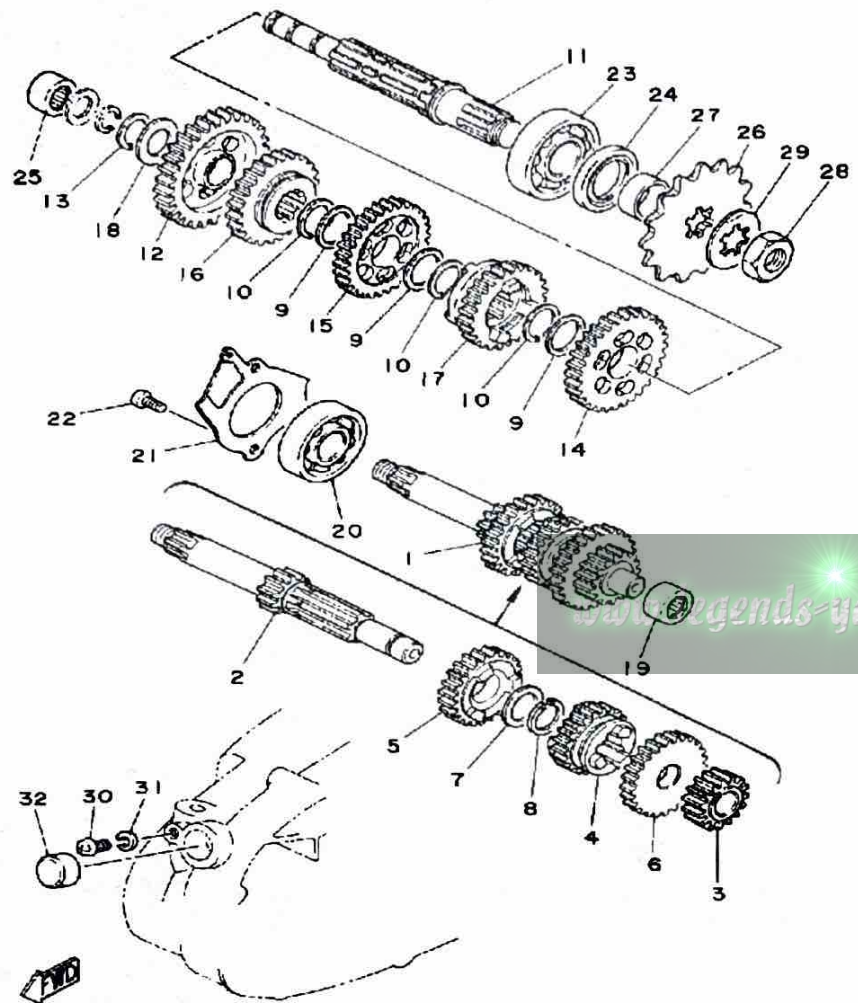


| Ref. No. | Part Number | Description | Qty | Remarks |
|----------|-------------------|-------------------------------------|-----|---------|
| 1 | (558-17410-00-00) | MAIN AXLE | 1 | |
| 2 | 558-17411-00-00 | . AXLE, MAIN (11T) | 1 | |
| 3 | 437-17121-02-00 | . GEAR, 2ND PINION | 1 | |
| 4 | 427-17131-00-00 | . GEAR, 3RD PINION (19T) | 1 | |
| 5 | (437-17141-00-00) | GEAR, 4TH PINION | 1 | |
| 6 | 437-17151-00-00 | . GEAR, 5TH PINION (25T) | 1 | |
| 7 | 90201-20266-00 | . WASHER, PLATE (1.0T) | 1 | |
| 8 | 93410-20038-00 | . CIRCLIP | 1 | |
| 9 | 90201-20266-00 | WASHER, PLATE (1.0T) | 3 | |
| 10 | 93410-20038-00 | CIRCLIP | 3 | |
| 11 | 558-17421-00-00 | AXLE, DRIVE | 1 | |
| 12 | 248-17211-00-00 | GEAR, 1ST WHEEL (35T) | 1 | |
| 13 | 93440-15012-00 | CIRCLIP | 1 | |
| 14 | 427-17221-00-00 | GEAR, 2ND WHEEL (30T) | 1 | |
| 15 | 427-17231-00-00 | GEAR, 3RD WHEEL (26T) | 1 | |
| 16 | 248-17241-00-00 | GEAR, 4TH WHEEL (23T) | 1 | |
| 17 | 437-17251-00-00 | GEAR, 5TH WHEEL (20T) | 1 | |
| 18 | 164-17427-00-06 | SHIM 1 (0.6T) | 1 | |
| 19 | 93315-31502-00 | BEARING | 1 | |
| 20 | 93306-30309-00 | BEARING | 1 | |
| 21 | 1G8-17471-00-00 | PLATE, COVER | 1 | |
| 22 | 98580-06012-00 | SCREW, PAN HEAD | 2 | |
| 23 | 93306-30421-00 | BEARING (B6304C3) | 1 | |
| 24 | 93102-26042-00 | OIL SEAL | 1 | |
| 25 | 93311-31567-00 | BEARING, CYLINDRICAL | 1 | |
| 26 | 93812-13022-00 | SPROCKET, DRIVE 13T | 1 | U.R.STD |
| | 93812-14035-00 | SPROCKET, DRIVE 14T (5171746142) | 1 | U.R.STD |
| | 93812-15063-00 | SPROCKET, DRIVE 15T (5171746152) | 1 | U.R.STD |

| | |
|--|--------------------------------|
| TRANSMISSION - Oil Type/Qty Chg/Qty Reassemble | SAE 10W30 SE / 650 cc / 650 cc |
| Primary Drive Type/Teeth/Ratio | Helical Gear / 74 19 / 3.885 |
| Secondary Drive Type/Teeth/Chain | Chain / 48-14 / RS42D 104L |

CONTINUED ON NEXT FRAME ►

TRANSMISSION

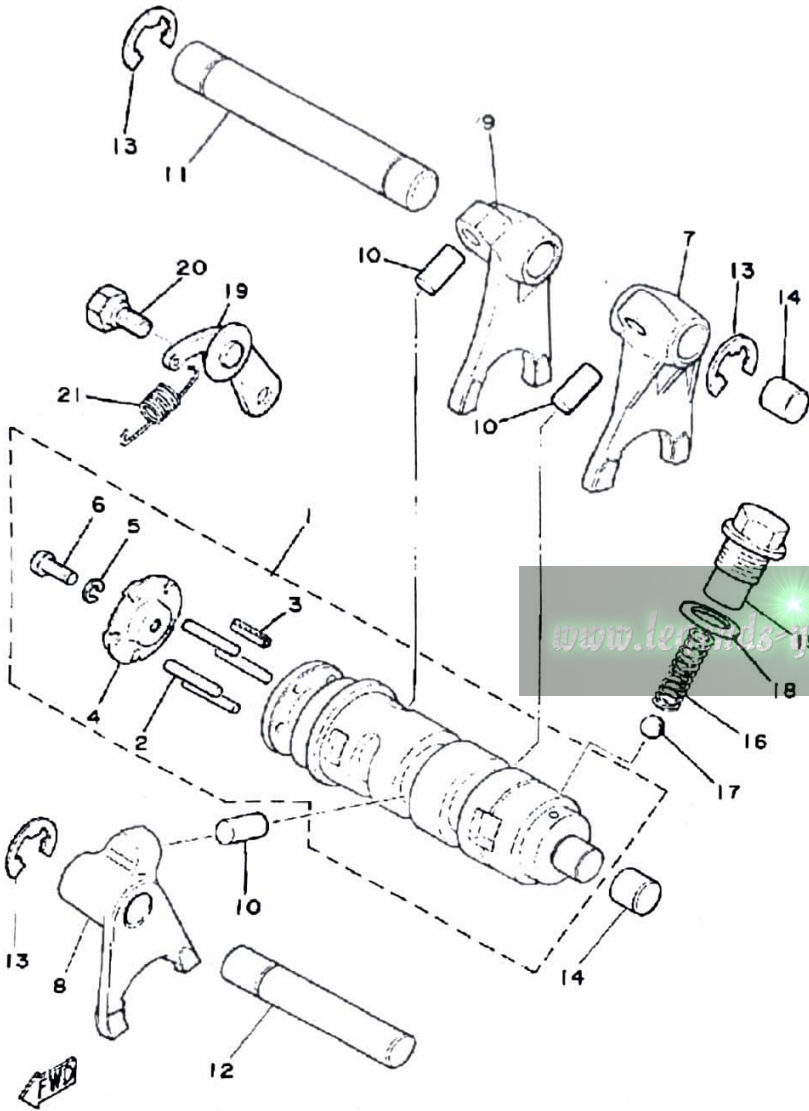


| Ref. No. | Part Number | Description | Qty | Remarks |
|----------|----------------|-------------------------------------|-----|---------|
| 27 | 90387-20491-00 | COLLAR | 1 | |
| 28 | 90179-16018-00 | NUT | 1 | |
| 29 | 90215-16020-00 | WASHER, LOCK | 1 | |
| 30 | 98580-06010-00 | SCREW, PAN HEAD (92503-06010) | 1 | |
| 31 | 92995-06100-00 | WASHER, SPRING | 1 | |
| 32 | 90338-20023-00 | PLUG | 1 | |

| | |
|--|--------------------------------|
| TRANSMISSION - Oil Type/Qty Chg/Qty Assembly | SAE 10W30 SE / 650 cc / 650 cc |
| Primary Drive Type/Teeth/Ratio | Helical Gear / 74 19 / 3.885 |
| Secondary Drive Type/Teeth/Chain | Chain / 48-14 / RS420-104L |

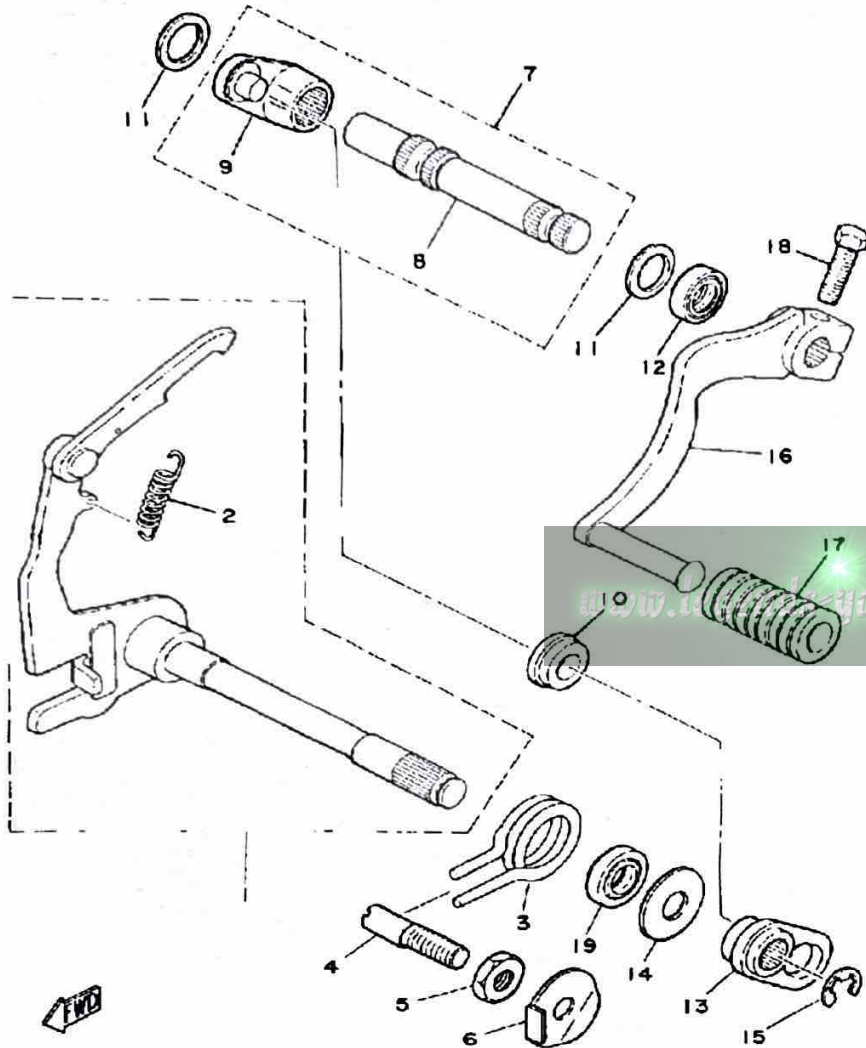
SHIFT CAM - FORK

| Ref. No. | Part Number | Description | Qty | Remarks |
|----------|-----------------|---------------------------------------|-----|---------|
| 1 | 401-18540-00-00 | SHIFT CAM ASSEMBLY | 1 | |
| 2 | 93604-22050-00 | . PIN, DOWEL | 4 | |
| 3 | 91609-40016-00 | . PIN, SPRING | 1 | |
| 4 | 164-18561-00-00 | . PLATE, SIDE 1 | 1 | |
| 5 | 92990-05100-00 | . WASHER, SPRING | 1 | |
| 6 | 98580-05012-00 | . SCREW, PAN HEAD | 1 | |
| 7 | 463-18511-00-00 | FORK, SHIFT 1 | 1 | |
| 8 | 463-18512-00-00 | FORK, SHIFT 2 | 1 | |
| 9 | 463-18513-00-00 | FORK, SHIFT 3 | 1 | |
| 10 | 90250-08017-00 | PIN, STRAIGHT | 3 | |
| 11 | 214-18531-00-00 | BAR, SHIFT FORK GUIDE 1 | 1 | |
| 12 | 248-18531-00-00 | BAR, SHIFT FORK GUIDE 1 | 1 | |
| 13 | 93430-10017-00 | CIRCLIP | 3 | |
| 14 | 214-15385-00-00 | PLUG, BLIND | 2 | |
| 15 | 90109-14385-00 | BOLT | 1 | |
| 16 | 90501-12083-00 | SPRING, COMPRESSION (174-18558-00) | 1 | |
| 17 | 93505-16006-00 | BALL | 1 | |
| 18 | 137-15353-00-00 | GASKET, DRAIN | 1 | |
| 19 | 132-18140-01-00 | STOPPER LEVER ASSEMBLY | 1 | |
| 20 | 90109-06001-00 | BOLT | 1 | |
| 21 | 90506-09112-00 | SPRING, TENSION | 1 | |



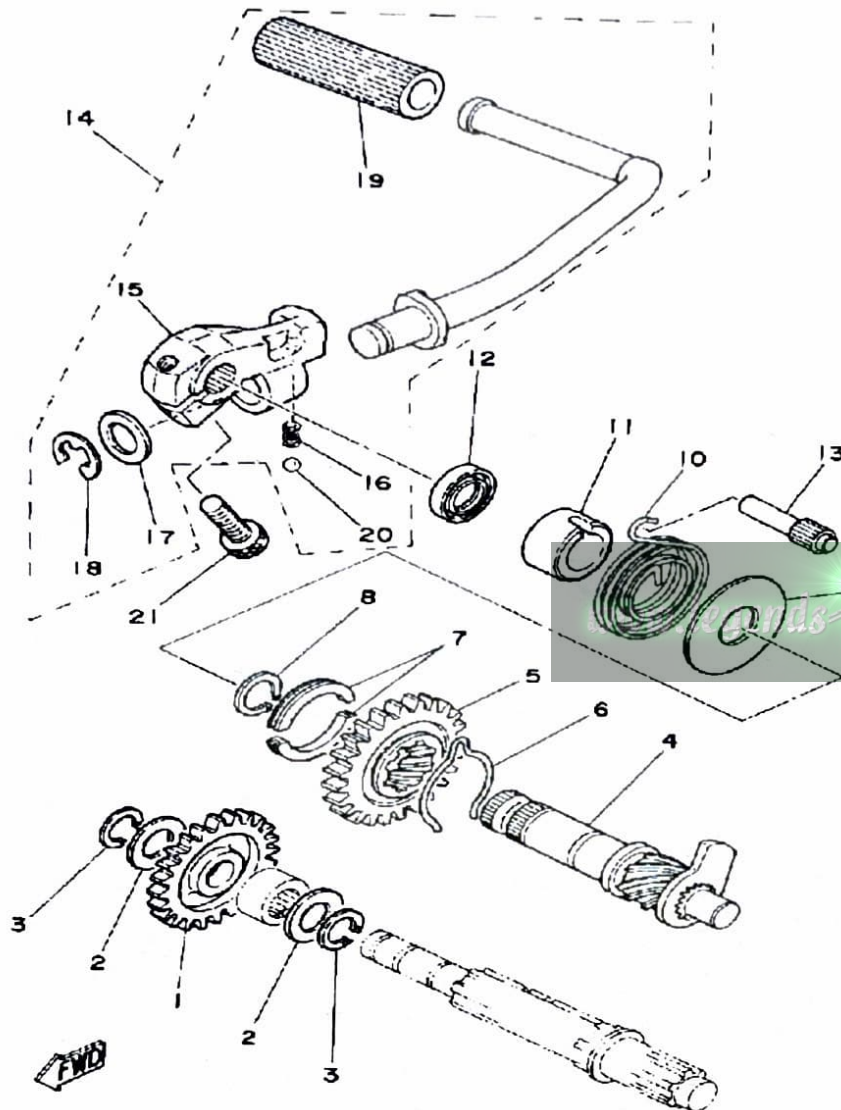
SHIFT SHAFT - PEDAL

| Ref. No. | Part Number | Description | Qty | Remarks |
|----------|-----------------|-----------------------------------|-----|---------|
| 1 | 558-18101-00-00 | SHIFT SHAFT ASSEMBLY | 1 | |
| 2 | 90506-09009-00 | . SPRING, TENSION | 1 | |
| 3 | 90508-32207-00 | SPRING, TORSION (132-18124-00) | 1 | |
| 4 | 90149-08094-00 | SCREW | 1 | |
| 5 | 90170-08029-00 | NUT | 1 | |
| 6 | 90215-08014-00 | WASHER, LOCK | 1 | |
| 7 | 401-18102-01-00 | SHIFT SHAFT ASSEMBLY 2 | 1 | |
| 8 | 401-18155-02-00 | . SHAFT, SHIFT 2 | 1 | |
| 9 | 401-18151-00-00 | . LEVER, SHIFT 3 | 1 | |
| 10 | 401-18178-00-00 | ROLLER, SHIFT LEVER | 1 | |
| 11 | 401-18334-00-00 | SHIM | 2 | |
| 12 | 93109-12012-00 | OIL SEAL | 1 | |
| 13 | 401-18152-01-00 | LEVER, SHIFT 4 | 1 | |
| 14 | 90201-12575-00 | WASHER, PLATE | 1 | |
| 15 | 99001-08600-00 | CIRCLIP | 1 | |
| 16 | 1T9-18111-00-00 | PEDAL, SHIFT | 1 | |
| 17 | 132-18113-01-00 | COVER, SHIFT PEDAL | 1 | |
| 18 | 97011-06020-00 | BOLT | 1 | |
| 19 | 93101-12060-00 | OIL SEAL | 1 | |



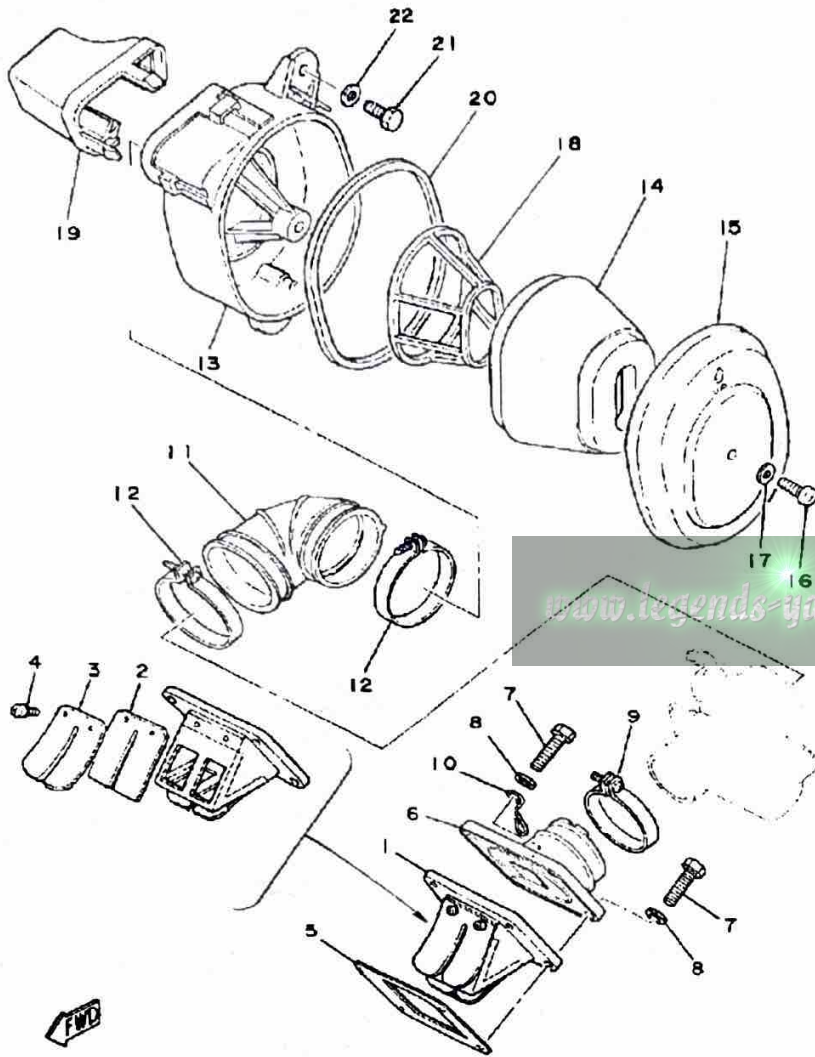
KICK STARTER

| Ref. No. | Part Number | Description | Qty | Remarks |
|----------|-----------------|---|-----|---------|
| 1 | 525-15651-00-00 | GEAR, KICK IDLE (25T) | 1 | |
| 2 | 137-17417-00-05 | SHIM 1 (0.5T) | 2 | |
| 3 | 93440-15012-00 | CIRCLIP | 2 | |
| 4 | 403-15660-01-00 | KICK AXLE ASSEMBLY (403-15660-02-00) | 1 | |
| 5 | 315-15641-00-00 | GEAR, KICK (27T) | 1 | |
| 6 | 90468-26048-00 | CLIP | 1 | |
| 7 | 248-15654-00-00 | HOLDER, KICK GEAR | 2 | |
| 8 | 99009-30400-00 | CIRCLIP | 1 | |
| 9 | 401-15676-00-00 | COVER, SPRING | 1 | |
| 10 | 90508-26041-00 | SPRING, TORSION | 1 | |
| 11 | 1W1-15666-00-00 | SPACER | 1 | |
| 12 | 93101-17062-00 | OIL SEAL | 1 | |
| 13 | 257-15668-00-00 | STOPPER | 1 | |
| 14 | 3UL-15620-00-00 | KICK CRANK ASSEMBLY | 1 | |
| 15 | 1T9-15621-00-00 | . BOSS, KICK CRANK | 1 | |
| 16 | 90501-12081-00 | . SPRING, COMPRESSION | 1 | |
| 17 | 90201-15234-00 | . WASHER, PLATE | 1 | |
| 18 | 99006-10600-00 | . CIRCLIP | 1 | |
| 19 | 156-15618-01-00 | . COVER, KICK LEVER | 1 | |
| 20 | 93507-32031-00 | . BALL | 1 | |
| 21 | 91316-08025-00 | BOLT, SOCKET HEAD | 1 | |

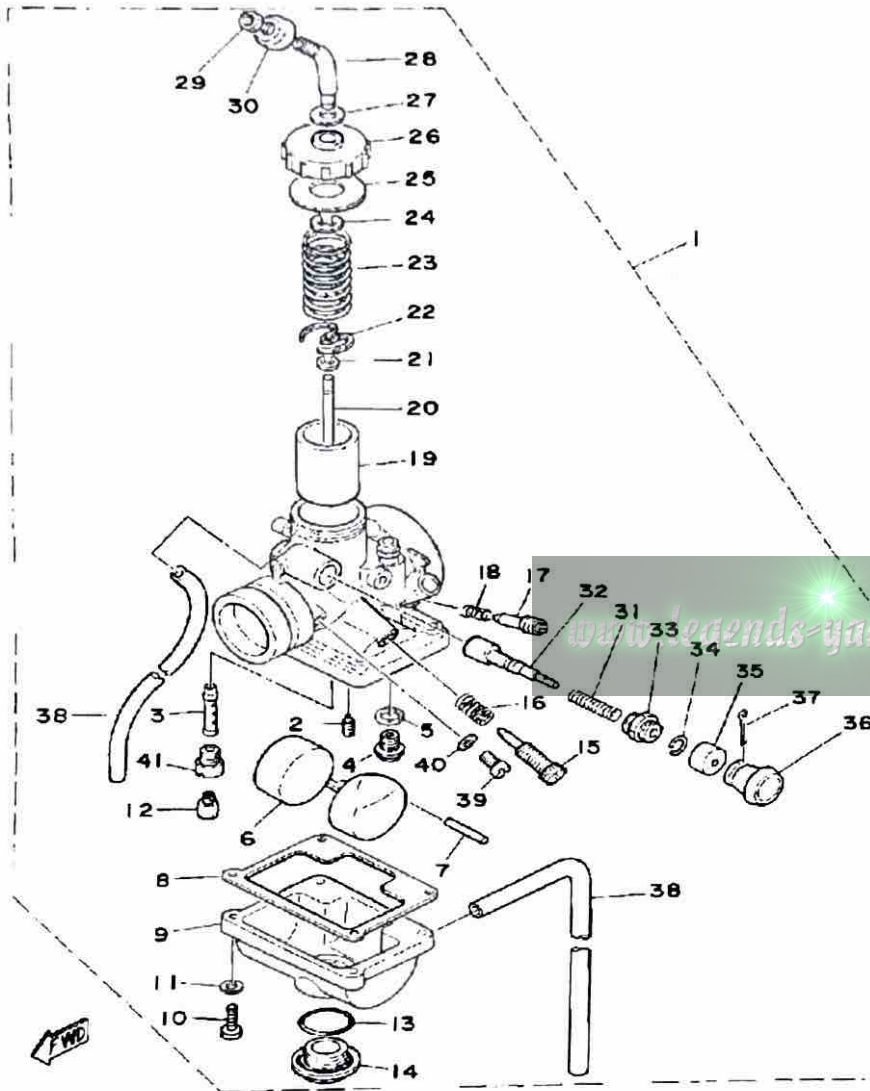


INTAKE

| Ref. No. | Part Number | Description | Qty | Remarks |
|----------|-----------------|-------------------------------|-----|---------|
| 1 | 558-13610-00-00 | REED VALVE ASSEMBLY | 1 | |
| 2 | 345-13613-70-00 | . REED, VALVE | 2 | |
| 3 | 558-13616-00-00 | . STOPPER, REED VALVE | 2 | |
| 4 | 98580-03008-00 | . SCREW, PAN HEAD | 4 | |
| 5 | 87A-13621-00-00 | GASKET, VALVE SEAT | 1 | |
| 6 | 560-13565-00-00 | JOINT, CARBURETOR | 1 | |
| 7 | 97011-06025-00 | BOLT (97001-06025) | 4 | |
| 8 | 92901-06600-00 | WASHER | 4 | |
| 9 | 90460-43053-00 | CLAMP, HOSE | 1 | |
| 10 | 90462-20029-00 | CLAMP | 1 | |
| 11 | 1T9-14453-00-00 | JOINT, AIR CLNR 1 | 1 | |
| 12 | 90460-51059-00 | CLAMP, HOSE | 2 | |
| 13 | 1T9-14411-00-00 | CASE, AIR CLEANER 1 | 1 | |
| 14 | 1T9-14450-00-00 | ELEMENT ASSEMBLY, AIR CLEANER | 1 | |
| 15 | 1T9-14412-00-00 | CAP, CLEANER CASE 1 | 1 | |
| 16 | 98580-06018-00 | SCREW, PAN HEAD | 1 | |
| 17 | 92901-06600-00 | WASHER | 1 | |
| 18 | 1T9-14458-00-00 | GUIDE | 1 | |
| 19 | 1T9-14437-00-00 | DUCT | 1 | |
| 20 | 3V6-14416-00-00 | GASKET, AIR CLEANER | 1 | |
| 21 | 97313-06016-00 | BOLT, HEXAGON | 1 | |
| 22 | 90201-06067-00 | WASHER, PLATE | 1 | |



CARBURETOR

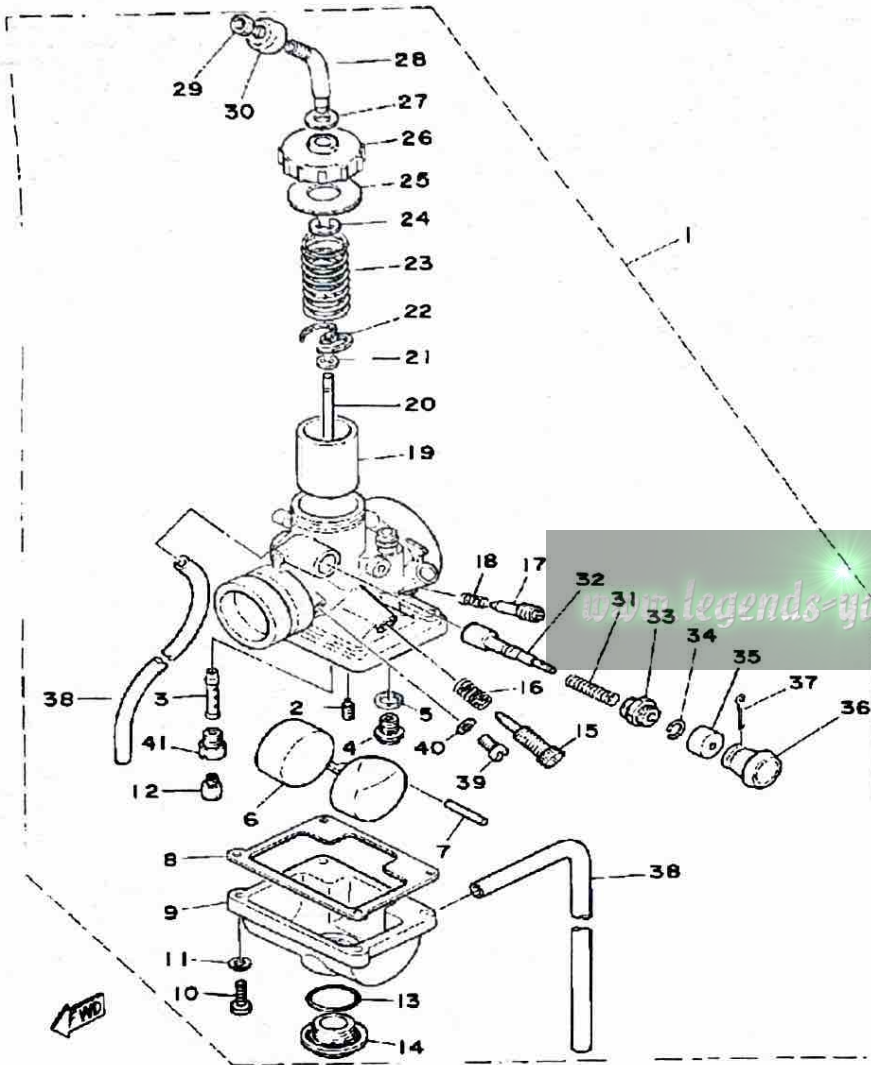


| Ref. No. | Part Number | Description | Qty | Remarks |
|----------|-----------------|----------------------------------|-----|---------|
| 1 | 3M1-14101-00-00 | CARBURETOR ASSEMBLY 1 | 1 | |
| 2 | 260-14142-17-00 | . JET, PILOT (#17.5) | 1 | |
| 3 | 2F5-14141-36-00 | . NOZZLE, MAIN | 1 | |
| 4 | 353-14190-15-00 | . NEEDLE VALVE ASSEMBLY | 1 | |
| 5 | 127-14195-00-00 | . WASHER, NEEDLE VALVE | 1 | |
| 6 | 304-14185-00-00 | . FLOAT | 1 | |
| 7 | 127-14186-00-00 | . PIN, FLOAT | 1 | |
| 8 | 304-14184-00-00 | . GASKET, FLOAT CHAMBER | 1 | |
| 9 | 539-14181-06-00 | . BODY, FLOAT CHMBR 1 | 1 | |
| 10 | 98503-04014-00 | . SCREW, PAN HEAD | 4 | |
| 11 | 92901-04100-00 | . WASHER, SPRING | 4 | |
| 12 | 137-14143-25-A0 | . JET, MAIN #1 5 | 1 | U.R.STD |
| | 137-14143-26-A0 | . JET, MAIN (#130) | 1 | U.R.STD |
| | 137-14143-27-00 | . JET, MAIN (#135) | 1 | U.R.STD |
| 13 | 558-14147-00-00 | . O-RING | 1 | |
| 14 | 500-14115-00-00 | . PLUG, SCREW | 1 | |
| 15 | 493-14122-00-00 | . SCREW, THROTTLE (443-14122-00) | 1 | |
| 16 | 493-14133-00-00 | . SPRING, THRTL STOP | 1 | |
| 17 | 22K-14104-00-00 | . AIR SCREW SET | 1 | |
| 18 | 174-14134-00-00 | . SPRING, AIR ADJUSTING | 1 | |
| 19 | 304-14112-20-00 | . VALVE, THROTTLE 1 | 1 | |
| 20 | 18L-1490J-00-00 | . NEEDLE | 1 | |
| 21 | 164-14137-00-00 | . CLIP | 1 | |
| 22 | 137-14136-00-00 | . SEAT, SPRING | 1 | |
| 23 | 3X3-14131-00-00 | . SPRING, THRTL VALVE | 1 | |
| 24 | 363-14137-00-00 | . CLIP | 1 | |
| 25 | 193-14126-00-00 | . GASKET | 1 | |
| 26 | 1T9-14158-00-00 | . TOP, MIXING CHAMBER | 1 | |

CONTINUED ON NEXT FRAME ►

CARBURETOR

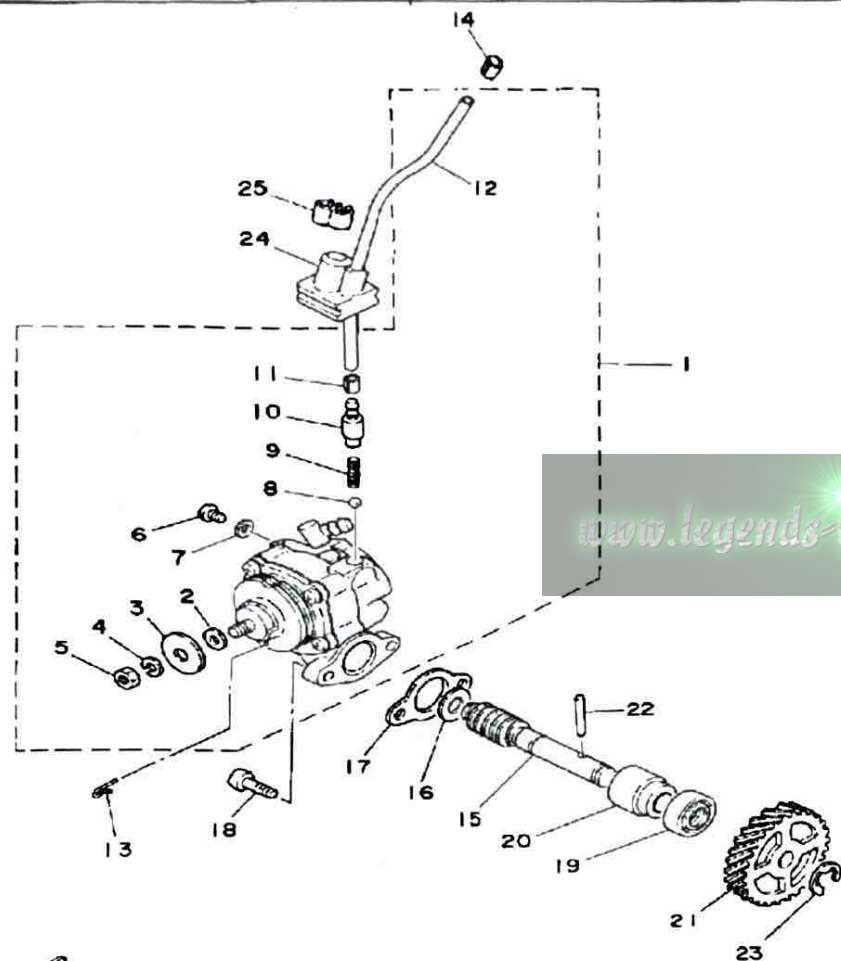
| Ref. No. | Part Number | Description | Qty | Remarks |
|----------|-----------------|----------------------------|-----|---------|
| 27 | 509-14198-00-00 | . GASKET | 1 | |
| 28 | 10X-14106-00-00 | . CABLE ADJUST SCREW SET | 1 | |
| 29 | 127-14161-00-00 | . NUT, CABLE ADJUSTING ... | 1 | |
| 30 | 1M1-14169-00-00 | . CAP | 1 | |
| 31 | 156-14135-00-00 | . SPRING, PLUNGER | 1 | |
| 32 | 304-14171-00-00 | . PLUNGER, STARTER | 1 | |
| 33 | 152-14138-00-00 | . CLIP, PLUNGER | 1 | |
| 34 | 152-14138-00-00 | . CLIP, PLUNGER | 1 | |
| 35 | 132-14173-00-00 | . COVER, PLUNGER CAP | 1 | |
| 36 | 304-14261-00-00 | . HOLDER | 1 | |
| 37 | 91490-16020-00 | . PIN, COTTER | 1 | |
| 38 | 23F-14197-00-00 | . PIPE, AIRVENT | 2 | |
| 39 | 2F5-14115-00-00 | . PLUG, SCREW | 1 | |
| 40 | 584-14956-00-00 | . WASHER | 1 | |
| 41 | 2F5-14145-00-00 | . SETTER, NEEDLE JET | 1 | |



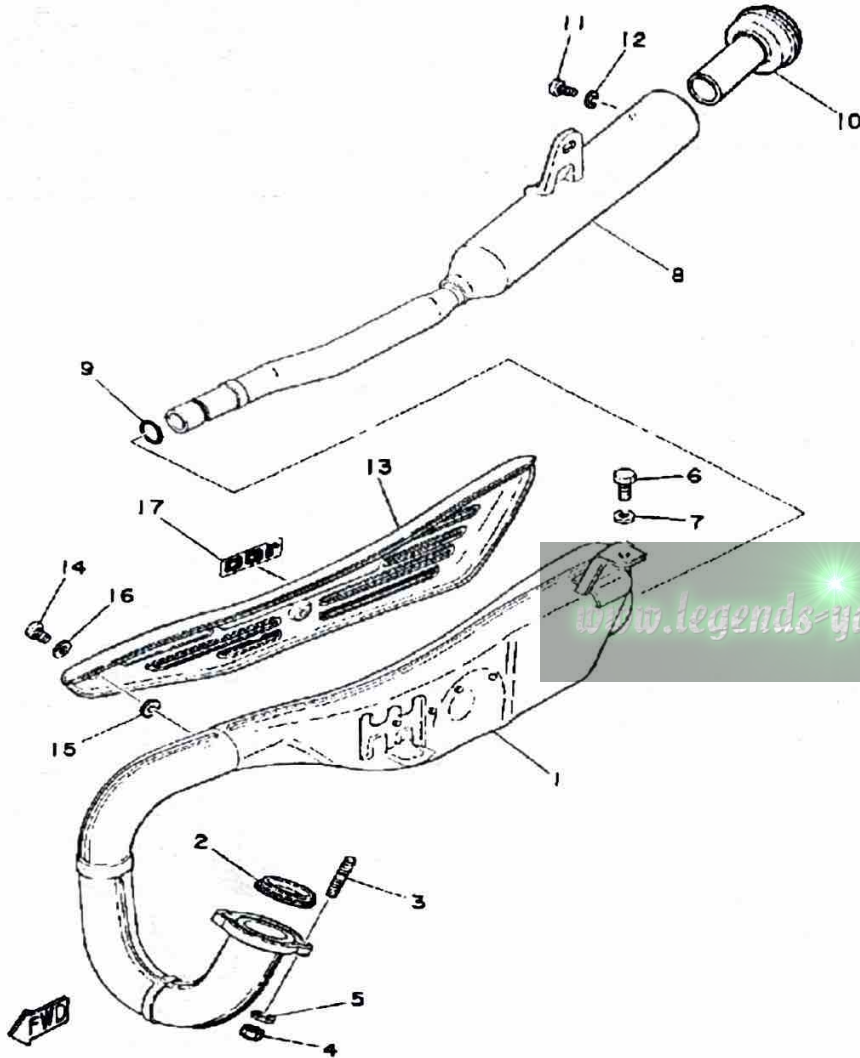
OIL PUMP

| Ref. No. | Part Number | Description | Qty | Remarks |
|----------|-----------------|-------------------------------------|-----|---------|
| 1 | 558-13101-01-00 | OIL PUMP ASSEMBLY | 1 | UR |
| 2 | 137-13137-00-03 | . SHIM (0.3T) | 1 | UR |
| | 137-13137-00-05 | . SHIM (0.5T) | 1 | UR |
| | 137-13137-00-10 | . SHIM (1.0T) | 1 | |
| 3 | 137-13138-01-00 | . PLATE, ADJUSTING | 1 | |
| 4 | 92990-05100-00 | . WASHER, SPRING | 1 | |
| 5 | 95380-05600-00 | . NUT | 1 | |
| 6 | 98901-04008-00 | . SCREW, BIND | 1 | |
| 7 | 90430-04004-00 | . GASKET | 1 | |
| 8 | 93505-32002-00 | . BALL | 1 | |
| 9 | 90501-02018-00 | . SPRING, COMPRESSION | 1 | |
| 10 | 402-13552-00-00 | . NOZZLE | 1 | |
| 11 | 90468-02033-00 | . CLIP | 1 | |
| 12 | 90445-05278-00 | . HOSE | 1 | |
| 13 | 367-13146-01-00 | CLIP | 1 | |
| 14 | 90468-02033-00 | CLIP | 1 | |
| 15 | 275-13175-01-00 | SHAFT, WORM | 1 | |
| 16 | 90201-08624-00 | WASHER, PLATE | 1 | |
| 17 | 3MT-13116-00-00 | GASKET, PUMP CASE (8Y0-13116-00) | 1 | |
| 18 | 98580-05016-00 | SCREW, PAN HEAD | 2 | |
| 19 | 93101-10002-00 | OIL SEAL | 1 | |
| 20 | 1E7-13176-00-00 | METAL, WRM SHAF OTR | 1 | |
| 21 | 248-13178-00-00 | GEAR, DRIVE (28T) | 1 | |
| 22 | 93603-22028-00 | PIN, DOWEL | 1 | |
| 23 | 99001-08600-00 | CIRCLIP | 1 | |
| 24 | 525-13174-00-00 | HOLDER, OIL PIPE | 1 | |
| 25 | 90468-15020-00 | CLIP | 1 | |

| | |
|-----------------------------------|-----------------------|
| AUTOLUBE — Min. Stroke/Color Code | 0.20 ~ 0.26mm / Green |
| Minimum Output @ 200 cycles | 0.50 ~ 0.62 cc |
| Maximum Output @ 200 cycles | 4.65 ~ 5.15 cc |



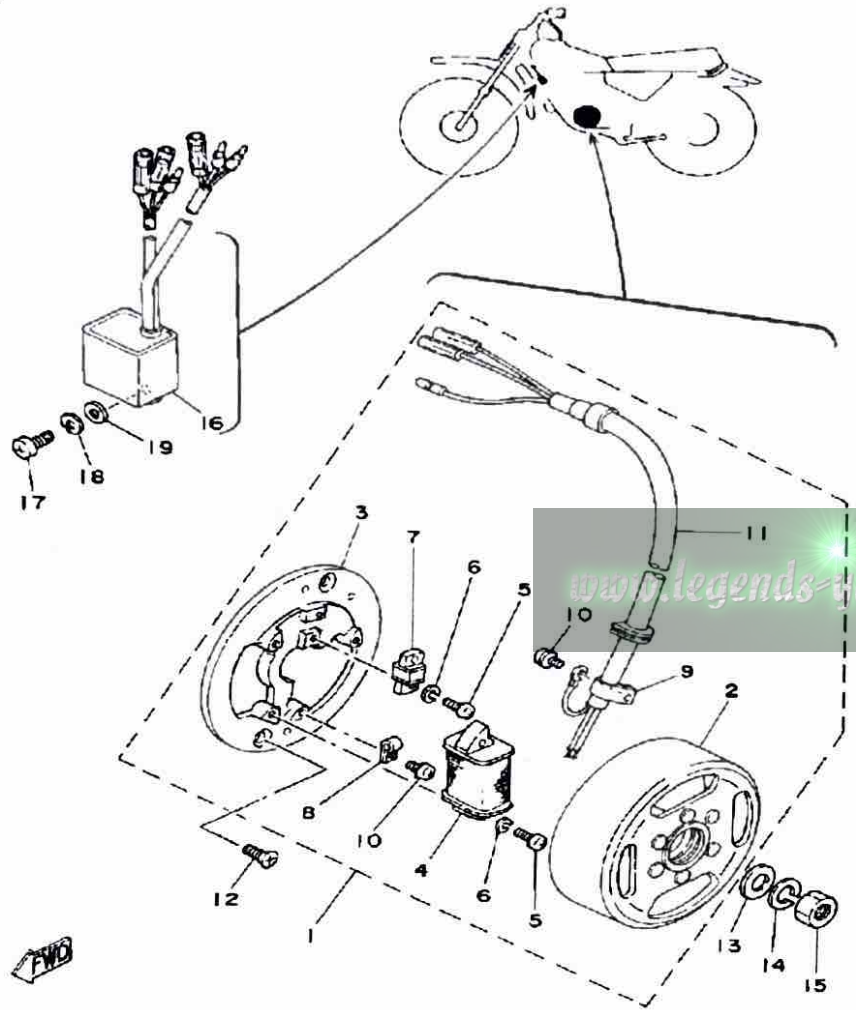
EXHAUST



| Ref. No. | Part Number | Description | Qty | Remarks |
|----------|-----------------|-------------------------------|-----|---------|
| 1 | 3UL-14610-00-00 | EXHAUST PIPE ASSEMBLY | 1 | |
| 2 | 152-14613-00-00 | GASKET, EXST PIPE | 1 | |
| 3 | 90116-06016-00 | BOLT, STUD | 2 | |
| 4 | 95380-06600-00 | NUT | 2 | |
| 5 | 92995-06100-00 | WASHER, SPRING | 2 | |
| 6 | 97313-08018-00 | BOLT, HEXAGON (97301-08016) | 1 | |
| 7 | 92990-08200-00 | WASHER, PLAIN | 1 | |
| 8 | 1T9-14753-00-00 | SILENCER, EXHAUST | 1 | |
| 9 | 93210-16290-00 | O-RING | 1 | |
| 10 | 438-14752-00-00 | PIPE, OUTLET | 1 | |
| 11 | 98580-06010-00 | SCREW, PAN HEAD (92503-06010) | 1 | |
| 12 | 92995-06100-00 | WASHER, SPRING | 1 | |
| 13 | 1T9-14718-00-36 | PROTECTOR, MUFF 1 | 1 | |
| 14 | 98903-06010-00 | SCREW, BIND | 3 | |
| 15 | 90202-05187-00 | WASHER, PLATE | 3 | |
| 16 | 90202-05005-00 | WASHER, PLATE (218-14766-10) | 3 | |
| 17 | 3T0-14729-00-00 | EMBLEM, PROTECTOR | 1 | |

C - D - I - MAGNETO

CHARGING SYSTEM Flywheel Magneto



| Ref. No. | Part Number | Description | Qty | Remarks |
|----------|-------------------|---|-----|---------|
| 1 | 3M2-85500-90-00 | C D I MAGNETO ASSEMBLY. . . | 1 | |
| 2 | 3M2-85550-20-00 | . ROTOR ASSEMBLY | 1 | |
| 3 | 3M2-85509-21-00 | . BASE, MAGNETO | 1 | |
| 4 | 3M2-85512-20-00 | . COIL, SOURCE | 1 | |
| 5 | 98503-04014-00 | . SCREW, PAN HEAD | 3 | |
| 6 | 92901-04100-00 | . WASHER, SPRING | 3 | |
| 7 | 3M2-85580-20-00 | . COIL, PULSER | 1 | |
| 8 | (445-85528-20-00) | CLAMP, LEAD | 1 | |
| 9 | 104-81328-20-00 | . CLAMP | 1 | |
| 10 | 97601-04106-00 | . SCREW, PN/HD.W/WSHR . . . | 2 | |
| 11 | 3M2-85515-20-00 | . LEAD WIRE ASSEMBLY | 1 | |
| 12 | 98603-06012-00 | SCREW, OVAL HEAD (92701-06012) | 2 | |
| 13 | 90201-12535-00 | WASHER, PLATE | 1 | |
| 14 | 92901-12100-00 | WASHER, SPRING | 1 | |
| 15 | 90170-12175-00 | NUT | 1 | |
| 16 | 3T0-85540-20-00 | C.D.I. UNIT ASSEMBLY | 1 | |
| 17 | 98503-06014-00 | SCREW, PAN HEAD (92502-06016) | 1 | |
| 18 | 92995-06100-00 | WASHER, SPRING | 1 | |
| 19 | 92901-06600-00 | WASHER | 1 | |

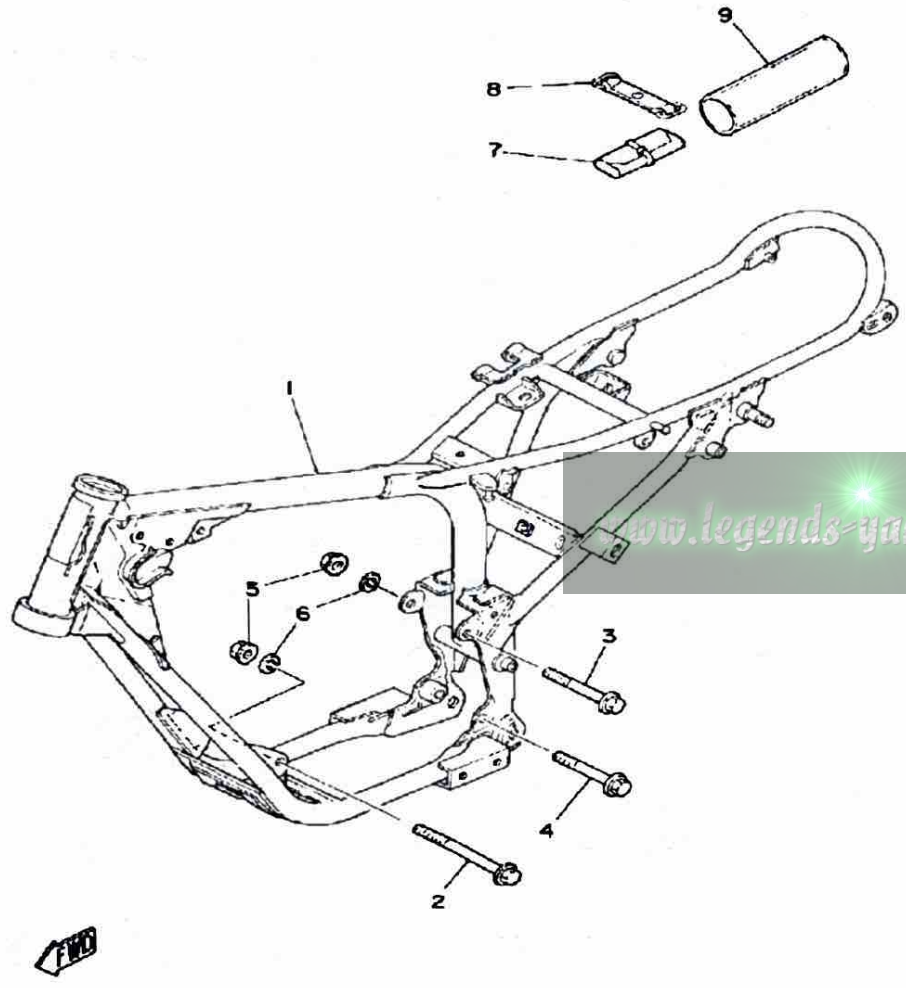
IGNITION SYSTEM Capacitor Discharge Ignition
Ignition Timing 1.8mm BTDC

FRAME - TOOL

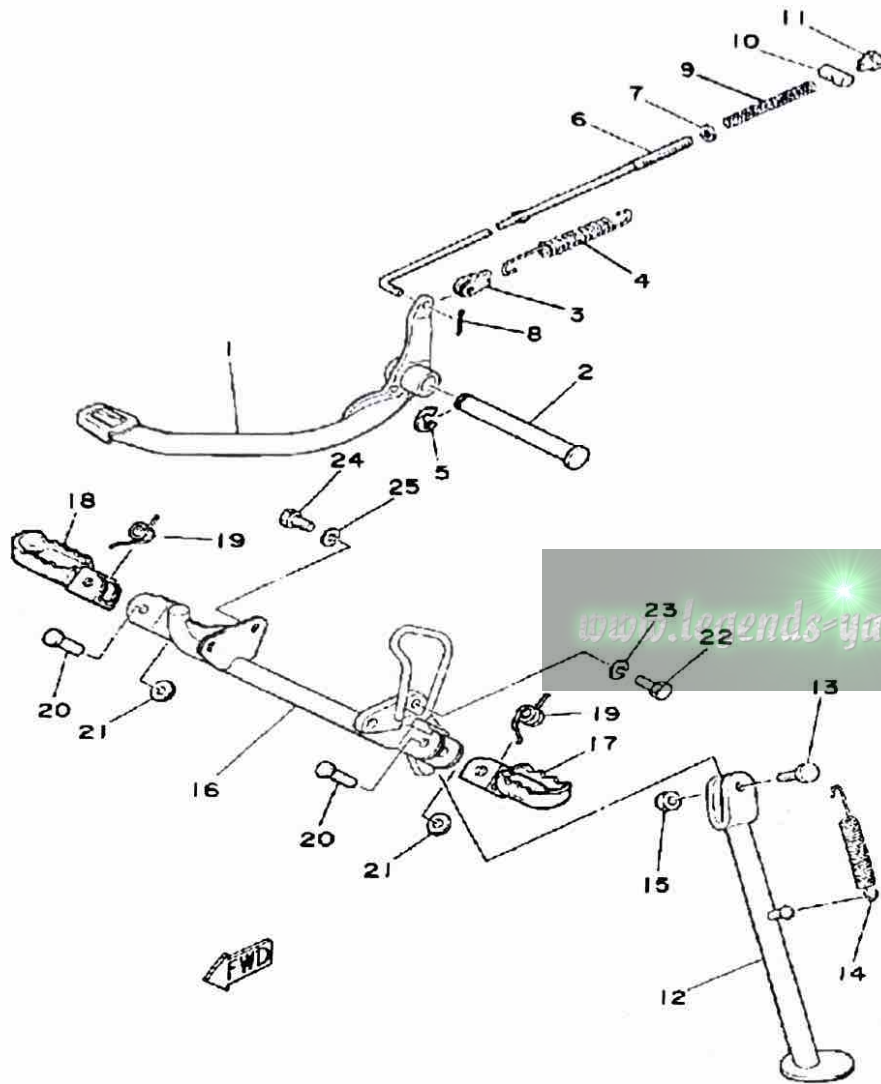
Initial Engine Number/Frame Number 3T0-000101 / 3T0-000101

| Ref. No. | Part Number | Description | Qty | Remarks |
|----------|-------------|-------------|-----|---------|
|----------|-------------|-------------|-----|---------|

| | | | | |
|---|-------------------|--------------------------|---|--|
| 1 | (3T0-21110-00-33) | FRAME | 1 | |
| 2 | 90105-08094-00 | BOLT, WASHER BASED | 1 | |
| 3 | 90105-08095-00 | BOLT, WASHER BASED | 1 | |
| 4 | 95811-10075-00 | BOLT, FLANGE | 1 | |
| 5 | 95701-08500-00 | NUT, FLANGE | 2 | |
| 6 | 92990-08100-00 | WASHER | 2 | |
| 7 | 353-W2810-00-00 | TOOL KIT | 1 | |
| 8 | 21V-21376-00-00 | BAND, TOOL | 1 | |
| 9 | (1T9-28171-00-00) | COVER, TOOL BOX | 1 | |



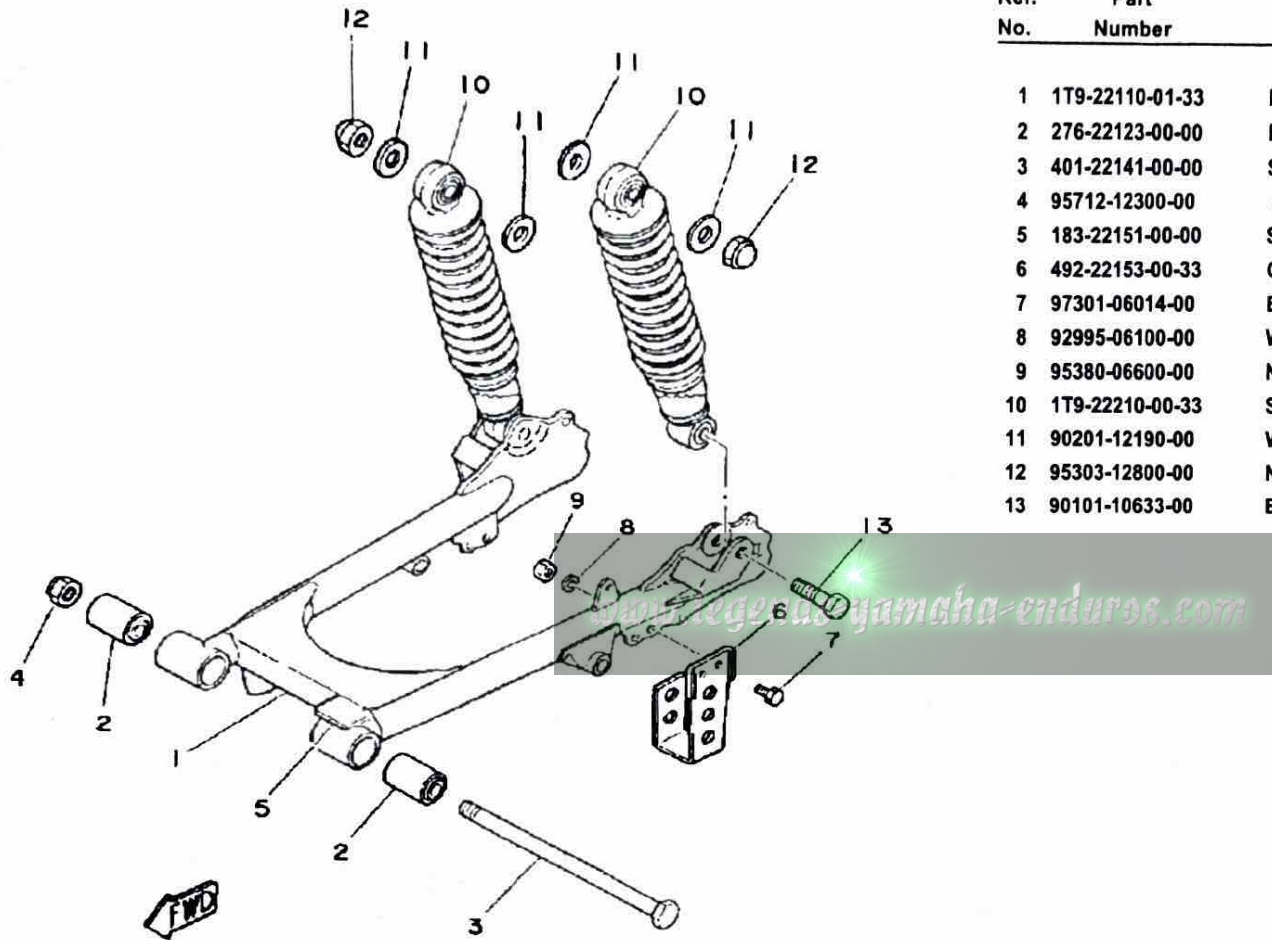
STAND - FOOTREST



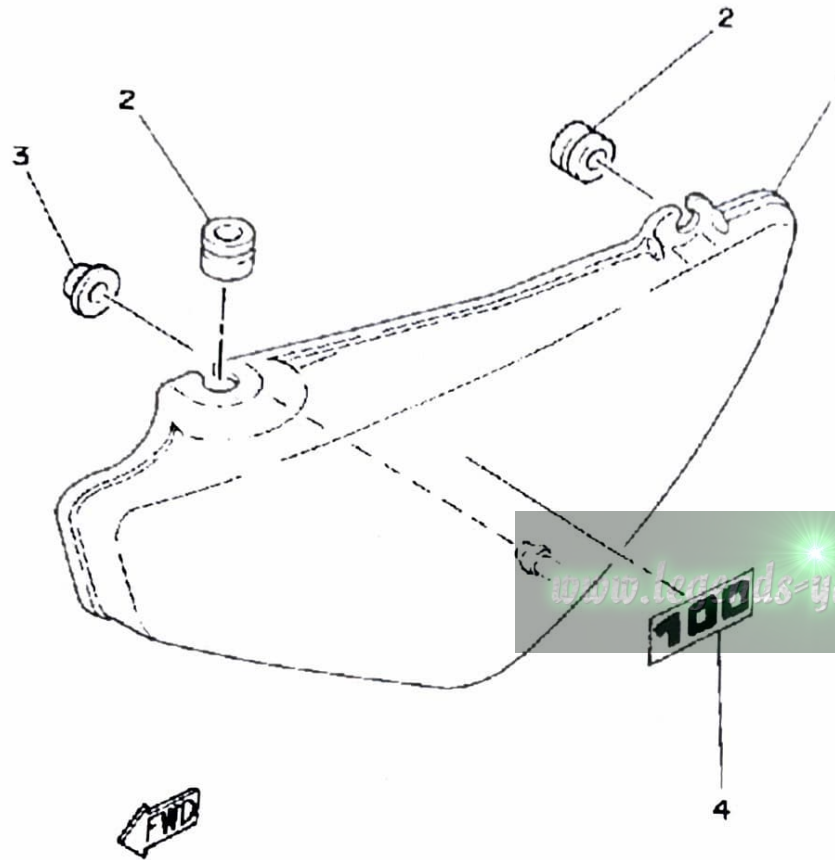
| Ref. No. | Part Number | Description | Qty | Remarks |
|----------|-----------------|---------------------|-----|---------|
| 1 | 538-27211-00-R4 | PEDAL, BRAKE | 1 | BLACK |
| 2 | 2A3-27212-00-00 | SHAFT, BRAKE PEDAL | 1 | |
| 3 | 1T9-27254-00-00 | HOOK | 1 | |
| 4 | 90506-20157-00 | SPRING, TENSION | 1 | |
| 5 | 93430-12008-00 | CIRCLIP | 1 | |
| 6 | 1T9-27231-00-00 | ROD, BRAKE | 1 | |
| 7 | 92990-06200-00 | WASHER | 1 | |
| 8 | 91490-20020-00 | PIN, COTTER | 1 | |
| 9 | 90501-10245-00 | SPRING, COMPRESSION | 1 | |
| 10 | 90249-12008-00 | PIN | 1 | |
| 11 | 90179-06411-00 | NUT | 1 | |
| 12 | 367-27311-02-R4 | STAND, SIDE | 1 | |
| 13 | 90109-08031-00 | BOLT | 1 | |
| 14 | 90506-29052-00 | SPRING, TENSION | 1 | |
| 15 | 95303-08700-00 | NUT | 1 | |
| 16 | 1T9-27451-02-R4 | FOOTREST | 1 | |
| 17 | 22W-27411-01-90 | FOOTREST 1 | 1 | |
| 18 | 22W-27421-01-90 | FOOTREST 2 | 1 | |
| 19 | 90508-20023-00 | SPRING, TORSION | 2 | |
| 20 | 90243-08006-00 | PIN | 2 | |
| 21 | 90201-06042-00 | WASHER, PLATE | 2 | |
| 22 | 97313-08020-00 | BOLT, HEXAGON | 2 | |
| 23 | 92990-08100-00 | WASHER | 2 | |
| 24 | 97313-08016-00 | BOLT, HEXAGON | 2 | |
| 25 | 92990-08100-00 | WASHER | 2 | |

REAR ARM - SUSPENSION

| Ref. No. | Part Number | Description | Qty | Remarks |
|----------|-----------------|---------------------------|-----|--------------|
| 1 | 1T9-22110-01-33 | REAR ARM | 1 | YAMAHA BLACK |
| 2 | 276-22123-00-00 | BUSH 1 | 2 | |
| 3 | 401-22141-00-00 | SHAFT, PIVOT | 1 | |
| 4 | 95712-12300-00 | 2 | 1 | |
| 5 | 183-22151-00-00 | SEAL, GUARD | 1 | |
| 6 | 492-22153-00-33 | GUARD, CHAIN | 1 | YAMAHA BLACK |
| 7 | 97301-06014-00 | BOLT, HEXAGON | 2 | |
| 8 | 92995-06100-00 | WASHER, SPRING | 2 | |
| 9 | 95380-06600-00 | NUT | 2 | |
| 10 | 1T9-22210-00-33 | SHK/ABS ASSEMBLY, REAR .. | 2 | |
| 11 | 90201-12190-00 | WASHER, PLATE | 4 | |
| 12 | 95303-12800-00 | NUT (CROWN) | 2 | |
| 13 | 90101-10633-00 | BOLT, HEXAGON | 2 | |



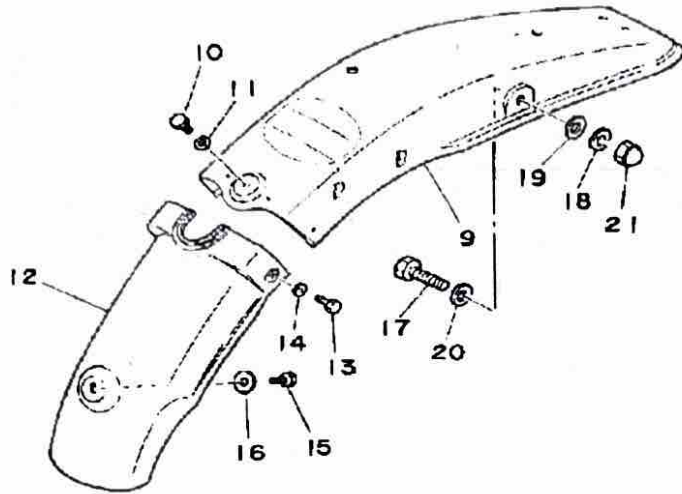
SIDE COVER



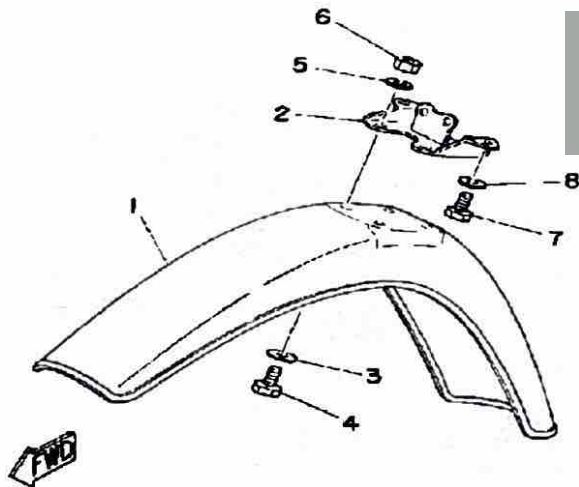
| Ref. No. | Part Number | Description | Qty | Remarks |
|----------|-----------------|---------------------|-----|-------------|
| 1 | 2F5-21711-01-00 | COVER, SIDE 1 | 1 | CLEAN WHITE |
| 2 | 90480-12053-00 | GROMMET | 2 | |
| 3 | 90480-01401-00 | GROMMET | 1 | |
| 4 | 3T0-21737-00-00 | EMBLEM | 1 | |

B10

FRONT FENDER - REAR FENDER



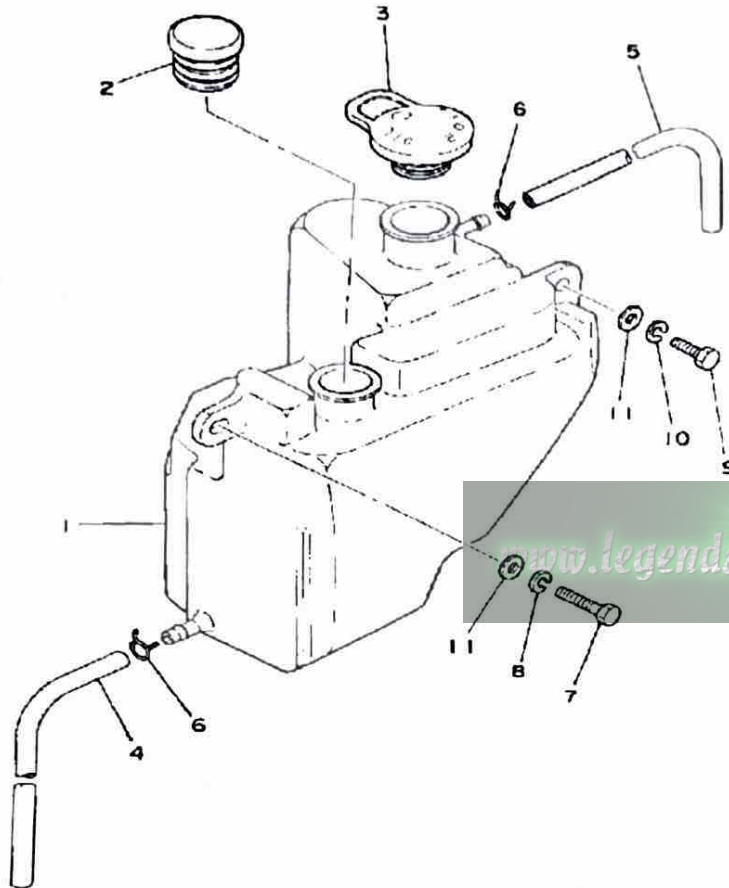
| Ref. No. | Part Number | Description | Qty | Remarks |
|----------|-----------------|-----------------------------|-----|-------------|
| 1 | 2E7-21511-00-00 | FENDER, FRONT | 1 | CLEAN WHITE |
| 2 | 1T9-21513-00-00 | STAY, FENDER 1 | 1 | |
| 3 | 90201-06067-00 | WASHER, PLATE | 4 | |
| 4 | 97301-06014-00 | BOLT, HEXAGON | 4 | |
| 5 | 92995-06100-00 | WASHER, SPRING | 4 | |
| 6 | 95380-06600-00 | NUT | 4 | |
| 7 | 97011-06010-00 | BOLT | 2 | |
| 8 | 92995-06100-00 | WASHER, SPRING | 2 | |
| 9 | 3M1-21611-00-36 | FENDER, REAR | 1 | |
| 10 | 97301-06014-00 | BOLT, HEXAGON | 1 | |
| 11 | 90201-06067-00 | WASHER, PLATE | 1 | |
| 12 | 1T9-21621-00-00 | FLAP | 1 | |
| 13 | 97013-06012-00 | BOLT | 1 | |
| 14 | 92995-06100-00 | WASHER, SPRING | 1 | |
| 15 | 97013-06012-00 | BOLT | 1 | |
| 16 | 90201-06067-00 | WASHER, PLATE | 1 | |
| 17 | 97313-08040-00 | BOLT, HEXAGON (97322-08040) | 2 | |
| 18 | 92990-08100-00 | WASHER | 2 | |
| 19 | 92901-08600-00 | WASHER | 2 | |
| 20 | 92901-08600-00 | WASHER | 2 | |
| 21 | 95303-08800-00 | NUT (CROWN) (95301-08800) | 2 | |



www.legends-yamaha.com

OIL TANK

| | | |
|------------|-----------------------|-------------|
| Lubricant: | Temp above 5°C (40°F) | Yamalube 2* |
| | Below 15°C (60°F) | Yamalube 2* |

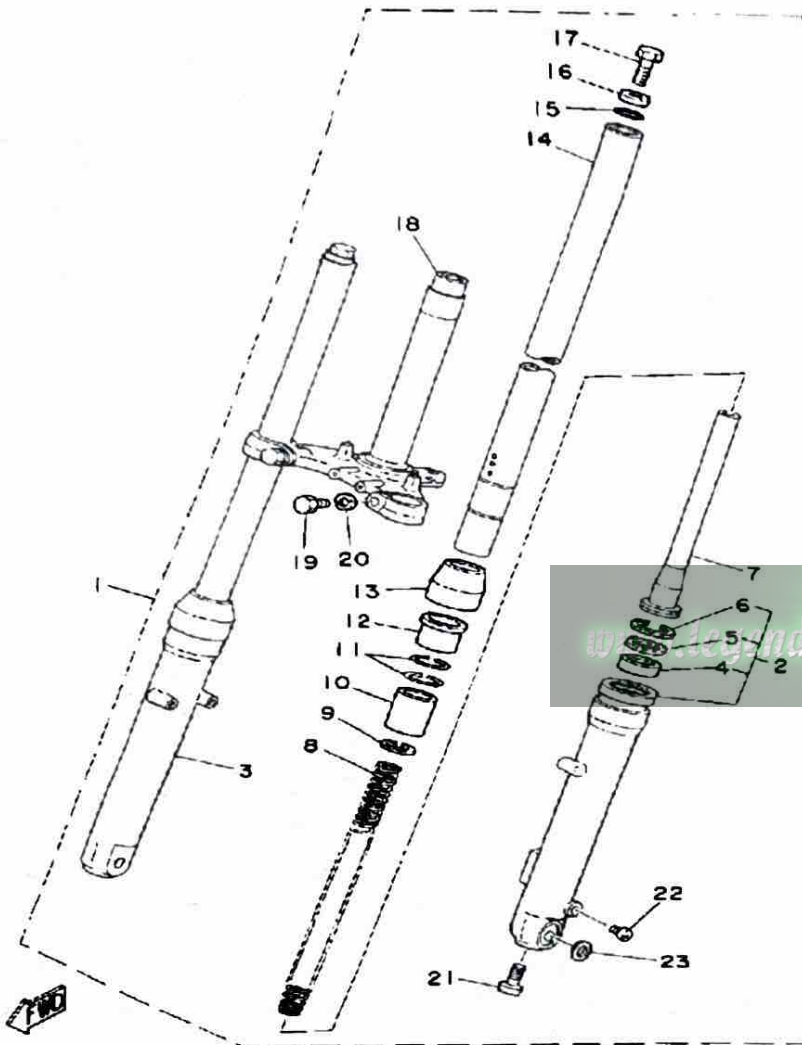


| Ref. No. | Part Number | Description | Qty | Remarks |
|----------|-----------------|--------------------------|-----|---------|
| 1 | 1T9-21751-00-00 | TANK, OIL | 1 | |
| 2 | 3M2-21771-00-00 | BODY, CAP | 1 | |
| 3 | 1T9-21771-00-00 | BODY, CAP | 1 | |
| 4 | 90445-09252-00 | HOSE | 1 | |
| 5 | 90445-09111-00 | HOSE | 1 | |
| 6 | 90467-08003-00 | CLIP | 2 | |
| 7 | 97011-06025-00 | BOLT (97001-06025) | 1 | |
| 8 | 92995-06100-00 | WASHER, SPRING | 1 | |
| 9 | 97313-06016-00 | BOLT, HEXAGON | 1 | |
| 10 | 92995-06100-00 | WASHER, SPRING | 1 | |
| 11 | 90201-06067-00 | WASHER, PLATE | 2 | |

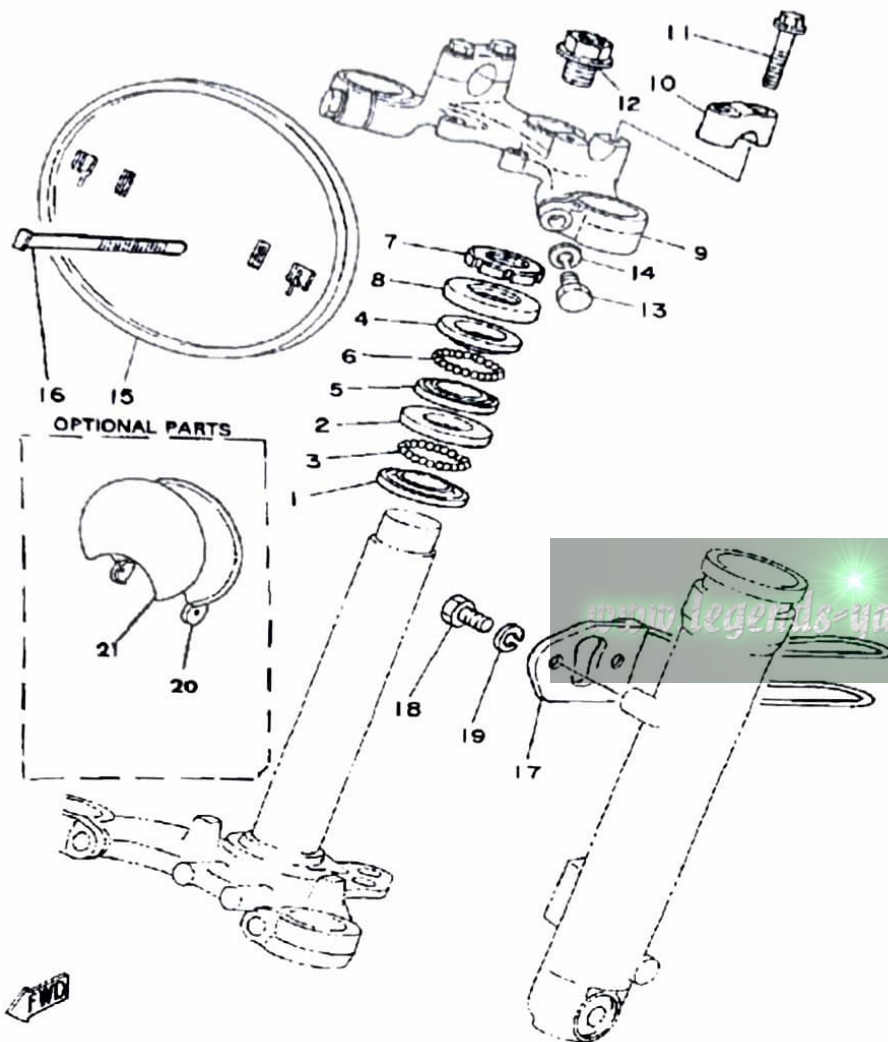
| | |
|-----------------------|----------|
| Oiling System | Autolube |
| Capacity: Dry | 10 L.t. |
| Oil and Filter Change | ø |
| Oil Change | ø |

FRONT FORK

| Ref. No. | Part Number | Description | Qty | Remarks |
|----------|-------------------|----------------------------|-----|---------|
| 1 | (1T9-23101-00-00) | FRONT FORK ASSEMBLY | 1 | |
| 2 | 1T9-23126-00-35 | TUBE, OUTER (LEFT) | 1 | |
| 3 | (462-23136-02-35) | TUBE, OUTER 2 | 1 | SILVER |
| 4 | 462-23145-02-00 | OIL SEAL | 2 | |
| 5 | 462-23146-02-00 | WASHER, OIL SEAL | 2 | |
| 6 | 462-23156-02-00 | CLIP, OIL SEAL | 2 | |
| 7 | 462-23170-02-00 | CYLINDER COMP., FRONT FORK | 2 | |
| 8 | 1T9-23141-00-00 | SPRING, FRONT FORK | 2 | |
| 9 | 462-23183-02-00 | CIRCLIP | 2 | |
| 10 | 462-23171-02-00 | PISTON, FRONT FORK | 2 | |
| 11 | 462-23157-02-00 | RING, PISTON | 4 | |
| 12 | 462-23125-02-00 | METAL, SLIDE 1 | 2 | |
| 13 | 462-23144-02-00 | SEAL, DUST | 2 | |
| 14 | 1T9-23124-00-00 | TUBE, INNER 1 | 2 | |
| 15 | 462-23114-02-00 | GASKET | 2 | |
| 16 | 276-23112-50-00 | WASHER, CAP | 2 | |
| 17 | 205-23111-40-00 | BOLT, CAP | 2 | |
| 18 | 1T9-23340-00-90 | UNDER BRACKET COMP. | 1 | |
| 19 | 97013-10030-00 | BOLT (8J) (97303-10030) | 2 | |
| 20 | 92990-10100-00 | WASHER, SPRING | 2 | |
| 21 | 98580-06025-00 | SCREW, PAN HEAD | 2 | |
| 22 | 451-23119-01-00 | PLUG, DRAIN | 2 | |
| 23 | 462-23392-02-00 | WASHER, SPECIAL | 2 | |



| | | |
|--------------|---------------------|----------------------------------|
| Front Forks: | Oil Type/Level/Qty. | 20 wt. Fork Oil / ϕ / 116cc |
| | Gas Pressure | ϕ |
| | Spring Length Std | 418.5mm |

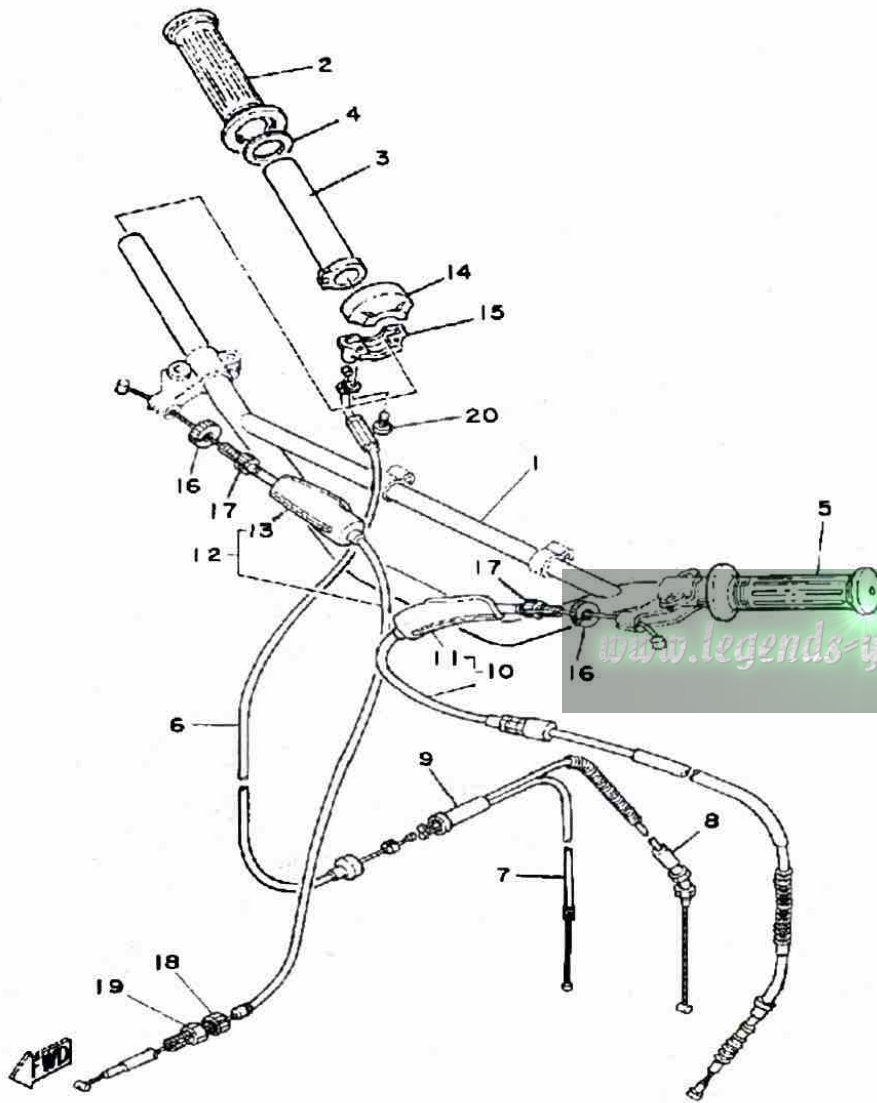


STEERING

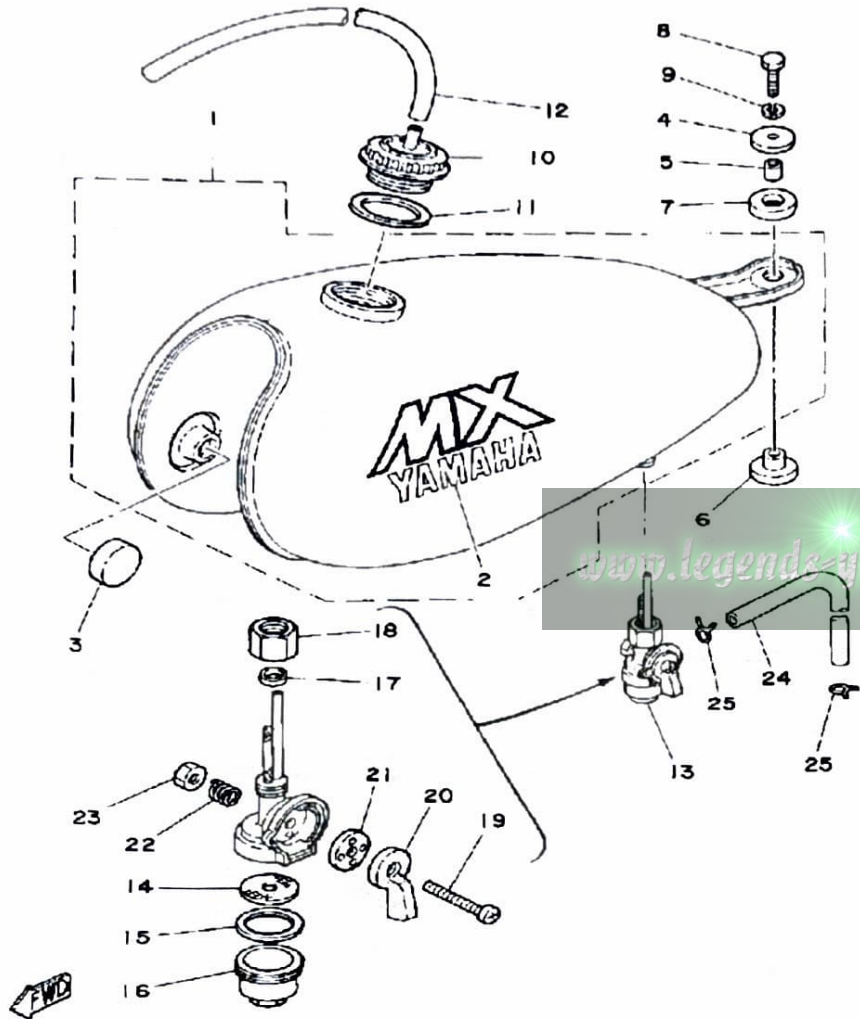
| Ref. No. | Part Number | Description | Qty | Remarks |
|----------|-----------------|----------------------------|-----|----------------|
| 1 | 156-23411-00-00 | RACE, BALL 1 | 1 | |
| 2 | 156-23412-00-00 | RACE, BALL 2 | 1 | |
| 3 | 93501-04011-00 | BALL | 19 | |
| 4 | 22F-23411-01-00 | RACE, BALL 1 | 1 | |
| 5 | 22F-23412-01-00 | RACE, BALL 2 | 1 | |
| 6 | 93503-16010-00 | BALL | 22 | |
| 7 | 90179-25033-00 | NUT | 1 | |
| 8 | 122-23416-00-00 | COVER, BALL RACE 2 | 1 | |
| 9 | 354-23435-00-33 | CROWN, HANDLE | 1 | YAMAHA BLACK |
| 10 | 1E6-23441-00-00 | HOLDER, HANDLE UPR | 2 | LOW GLOSS BLK |
| 11 | 95811-08035-00 | BOLT, FLANGE (95821-08035) | 4 | |
| 12 | 90105-14136-00 | BOLT, WASHER BASED | 1 | |
| 13 | 97313-08030-00 | BOLT, HEXAGON | 2 | |
| 14 | 92990-08100-00 | WASHER | 2 | |
| 15 | 3R0-23485-00-00 | PLATE, NUMBER | 1 | |
| 16 | 2X4-23489-00-00 | BAND | 2 | |
| 17 | 1T9-23318-00-00 | HOLDER, CABLE 1 | 1 | |
| 18 | 97013-06012-00 | BOLT | 2 | |
| 19 | 92995-06100-00 | WASHER, SPRING | 2 | |
| 20 | 1W2-23485-00-00 | PLATE, NUMBER | 1 | OPTIONAL PARTS |
| 21 | 1W2-23395-00-00 | EMBLEM | 1 | OPTIONAL PARTS |

HANDLEBAR - CABLE

| Ref. No. | Part Number | Description | Qty | Remarks |
|----------|-------------------|---------------------------------------|-----|---------|
| 1 | 3M1-26111-01-00 | HANDLEBAR | 1 | |
| 2 | 2N3-26242-00-00 | GRIP RH (R.H) | 1 | |
| 3 | 1V1-26243-00-00 | TUBE, THRTL GUIDE | 1 | |
| 4 | 90201-261L1-00 | WASHER, PLATE (1V1-26249-00) | 1 | |
| 5 | 2N3-26241-00-00 | GRIP (LEFT) | 1 | |
| 6 | 3M1-26311-00-00 | CABLE, THROTTLE 1 | 1 | |
| 7 | 1T9-26312-10-00 | CABLE, THROTTLE 2 | 1 | |
| 8 | 1T9-26321-10-00 | CABLE, PUMP | 1 | |
| 9 | 214-26261-00-00 | CONNECTOR, CABLE | 1 | |
| 10 | 3M1-26335-00-00 | CABLE, CLUTCH | 1 | |
| 11 | (381-26372-01-00) | COVER, HANDLE LEVER | 1 | |
| 12 | 3M1-26341-00-00 | CABLE, BRAKE | 1 | |
| 13 | 498-26372-00-00 | . COVER, HANDLE LEVER 1 .. | 1 | |
| 14 | 1V1-26281-00-00 | CAP, GRIP UPPER | 1 | |
| 15 | 1V1-26282-00-00 | CAP, GRIP LOWER | 1 | |
| 16 | 90179-08316-00 | NUT | 2 | |
| 17 | 90123-08046-00 | BOLT | 2 | |
| 18 | 90123-06011-00 | BOLT | 1 | |
| 19 | 90179-06143-00 | NUT, SPEC"L SHAPE | 1 | |
| 20 | 98580-05016-00 | SCREW, PAN HEAD | 2 | |



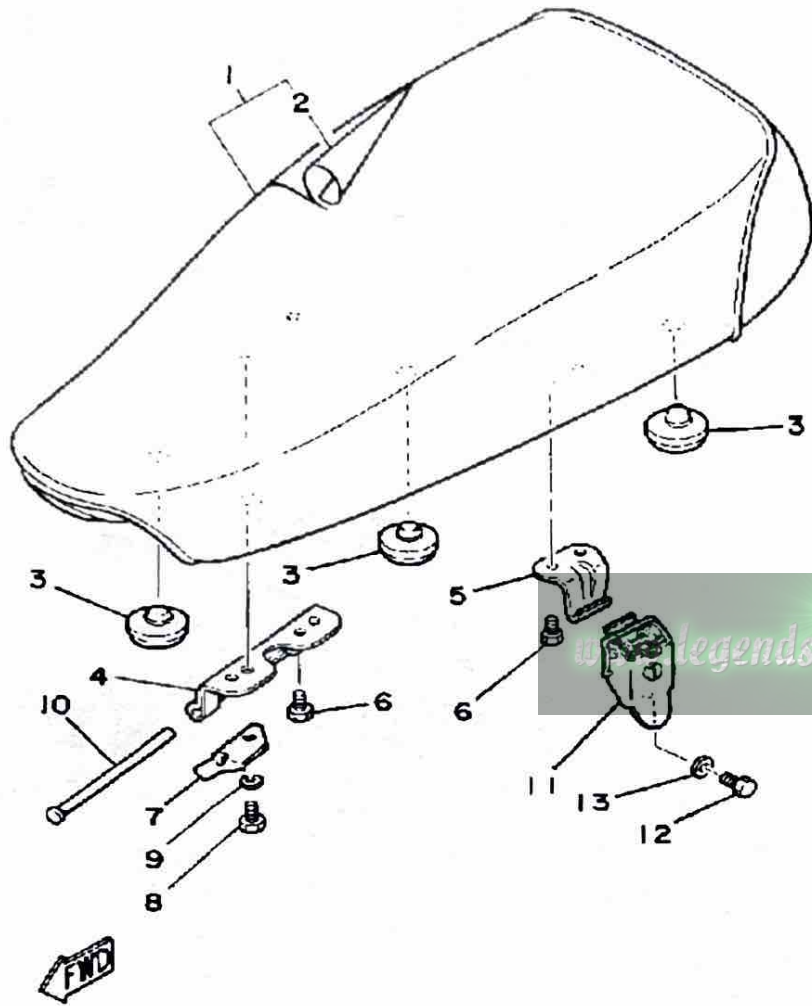
| | |
|---|---|
| Fuel Type/Fuel Tank Capacity/Reserve Capacity | Regular / 4.5 Lit. (1.2 Gal) / 0.3 Lit. (0.08 Gal.) |
|---|---|



FUEL TANK

| Ref. No. | Part Number | Description | Qty | Remarks |
|----------|-------------------|-------------------------------------|-----|---------|
| 1 | (538-24110-00-W5) | FUEL TANK | 1 | |
| 2 | (3M2-24244-00-00) | GRAPHIC, FUEL TNK 1 | 2 | |
| 3 | 122-24181-00-00 | DAMPER, LOCATING 1 | 2 | |
| 4 | 90201-06074-00 | WASHER, PLATE | 1 | |
| 5 | 90387-07390-00 | COLLAR | 1 | |
| 6 | 90480-14088-00 | GROMMET | 1 | |
| 7 | 90202-14077-00 | WASHER, PLATE | 1 | |
| 8 | 97011-06025-00 | BOLT (97001-06025) | 1 | |
| 9 | 92995-06100-00 | WASHER, SPRING | 1 | |
| 10 | 322-24611-02-00 | BODY, CAP | 1 | |
| 11 | 90430-35122-00 | GASKET | 1 | |
| 12 | 90445-09282-00 | HOSE | 1 | |
| 13 | 367-24500-04-00 | FUEL COCK ASSEMBLY 1 (5U7-24500-00) | 1 | |
| 14 | 355-24515-00-00 | . NET, FILTER 2 | 1 | |
| 15 | 102-24522-01-00 | . GASKET | 1 | |
| 16 | 122-24521-00-00 | . CUP, FILTER | 1 | |
| 17 | 122-24532-00-00 | . GASKET | 1 | |
| 18 | 603-24531-01-00 | . NUT | 1 | |
| 19 | 98501-05030-00 | . SCREW, PAN HEAD | 1 | |
| 20 | (355-24524-01-00) | LEVER, COCK | 1 | |
| 21 | 355-24523-00-00 | . VALVE | 1 | |
| 22 | (355-24518-00-00) | WASHER, WAVE | 1 | |
| 23 | 95380-05600-00 | . NUT | 1 | |
| 24 | 90445-09066-00 | HOSE | 1 | |
| 25 | 90467-08003-00 | CLIP | 2 | |

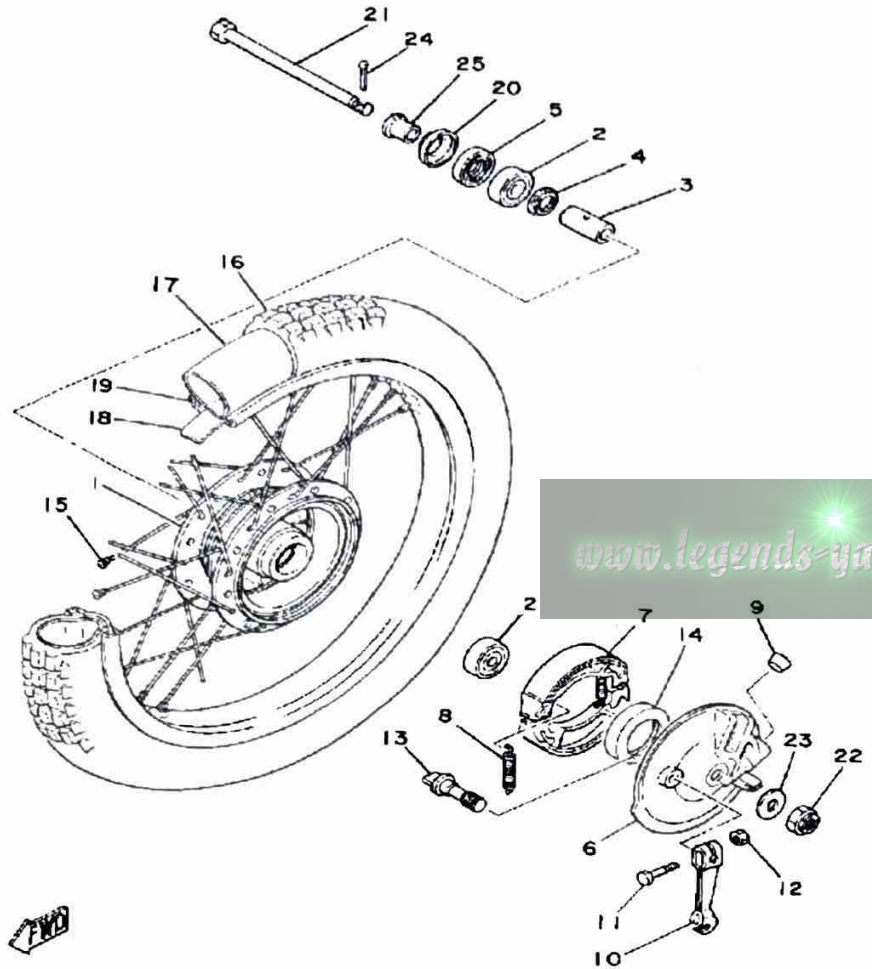
SEAT



| Ref. No. | Part Number | Description | Qty | Remarks |
|----------|-----------------|----------------------|-----|---------|
| 1 | 1T9-W2471-01-00 | SINGLE SEAT ASSEMBLY | 1 | |
| 2 | 1T9-24711-00-00 | . COVER, SINGLE SEAT | 1 | |
| 3 | 1L9-24741-00-00 | PAD, SEAT | 5 | |
| 4 | 538-24726-00-00 | HINGE, SEAT | 1 | |
| 5 | 278-24728-00-00 | BRACKET, SEAT | 1 | |
| 6 | 90101-06304-00 | BOLT | 3 | |
| 7 | 1T9-24768-00-00 | STOPPER | 1 | |
| 8 | 97013-06012-00 | BOLT | 1 | |
| 9 | 92995-06100-00 | WASHER, SPRING | 1 | |
| 10 | 1K8-24774-00-00 | PIN | 1 | |
| 11 | 214-24708-00-00 | SEAT LEVER ASSEMBLY | 1 | |
| 12 | 97013-06012-00 | BOLT | 1 | |
| 13 | 92901-06600-00 | WASHER | 1 | |

FRONT WHEEL

| | |
|-----------------|---------------------|
| Front Axle Nut: | 12 x 1.25: 4.3 m.kg |
|-----------------|---------------------|

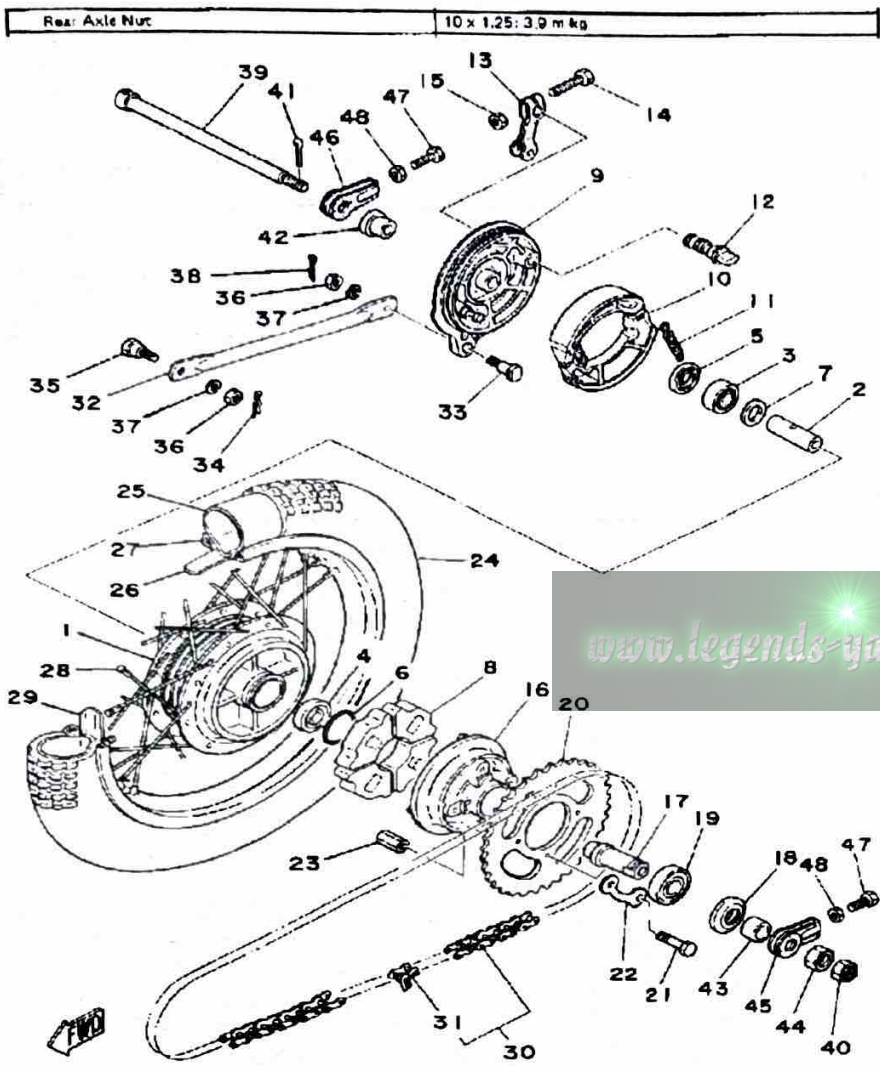


| Ref. No. | Part Number | Description | Qty | Remarks |
|----------|------------------|--------------------------------|-----|---------------|
| 1 | 248-25111-00-98 | HUB, FRONT | 1 | LOW GLOSS BLK |
| 2 | 93306-30103-00 | BEARING (B6301Z) | 2 | |
| 3 | 90560-12261-00 | SPACER | 1 | |
| 4 | 109-25315-00-00 | FLANGE, SPACER | 1 | |
| 5 | 93102-18008-00 | OIL SEAL | 1 | |
| 6 | 3M1-25121-00-98 | PLATE, BRAKE SHOE | 1 | LOW GLOSS BLK |
| 7 | 10X-W2536-00-00 | BRAKESHOE SET-2PCS | 2 | |
| 8 | 90506-16150-00 | SPRING, TENSION (102-25333-00) | 2 | |
| 9 | 90338-18014-00 | PLUG | 1 | |
| 10 | 5H0-25155-00-00 | LEVER, CAMSHAFT 1 | 1 | |
| 11 | 90101-06278-00 | BOLT | 1 | |
| 12 | 95380-06600-00 | NUT | 1 | |
| 13 | 3Y6-25351-00-00 | CAMSHAFT | 1 | |
| 14 | 93105-47007-00 | OIL SEAL | 1 | |
| 15 | 276-25104-40-00 | SPOKE SET, FRONT | 1 | |
| 16 | (94125-18570-00) | CS 250X18 C-755 1 | 1 | |
| 17 | 94225-18194-00 | TUBE (2.50-18) | 1 | |
| 18 | 94325-18059-00 | BAND, RIM | 1 | |
| 19 | 94414-18007-00 | RIM (1.40X18) | 1 | |
| 20 | 481-25118-01-00 | COVER, HUB DUST | 1 | |
| 21 | 90102-12015-00 | BOLT, WITH HOLE | 1 | |
| 22 | 95301-12900-00 | NUT, SLOTTED | 1 | |
| 23 | 90201-122A7-00 | WASHER, PLATE | 1 | |
| 24 | 91401-30030-00 | PIN, COTTER | 1 | |
| 25 | 90387-12616-00 | COLLAR | 1 | |

| | | |
|--------------------------------|--|--|
| Minimum Brake Lining Thickness | Front: 2mm | Rear: 2mm |
| Tire Size (Nominal Pressure) | F. 2.50-18 (1.0kg/cm ² /14 psi) | R. 3.00-18 (1.2kg/cm ² /17 psi) |

REAR WHEEL

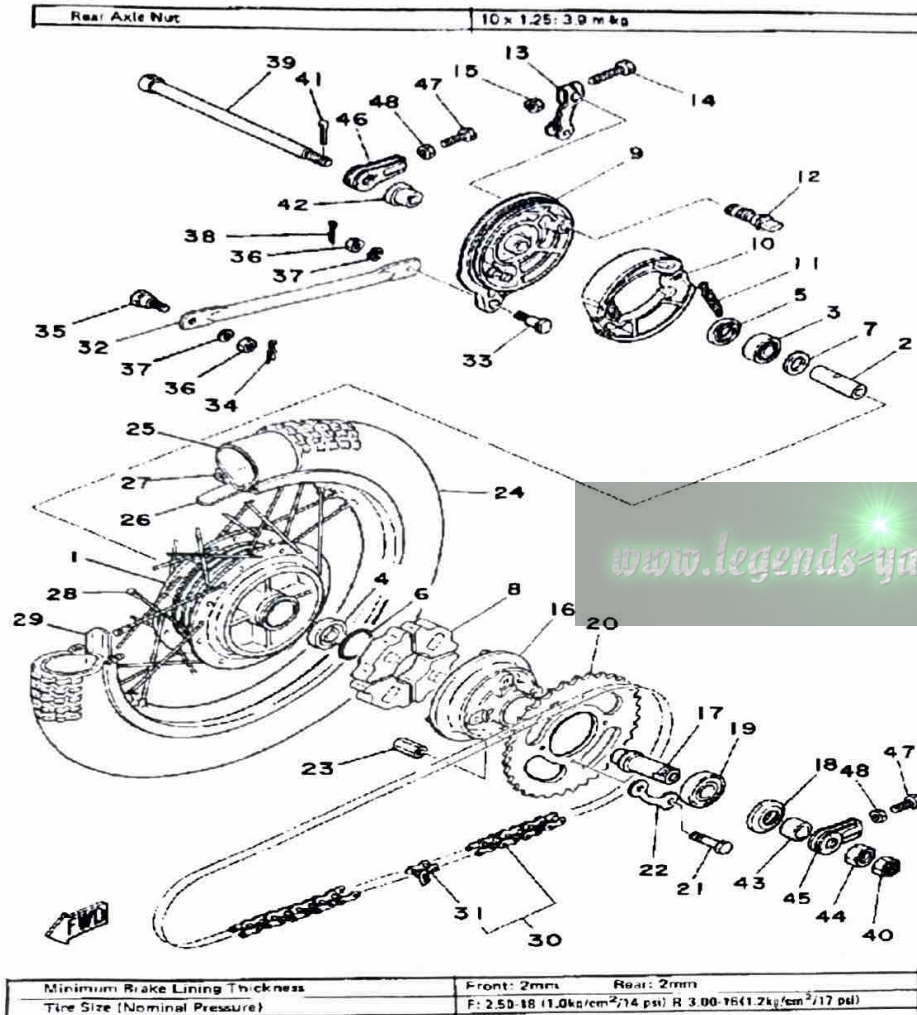
| Ref. No. | Part Number | Description | Qty | Remarks |
|----------|-----------------|--|-----|---------------|
| 1 | 99999-02213-00 | HUB, REAR | 1 | LOW GLOSS BLK |
| 2 | 90560-12145-00 | SPACER | 1 | |
| 3 | 93306-30103-00 | BEARING (B6301Z) | 1 | |
| 4 | 93306-30101-00 | BEARING (B6301) | 1 | |
| 5 | 93104-21016-00 | OIL SEAL, SO-TYPE | 1 | |
| 6 | 93210-41041-00 | O-RING | 1 | |
| 7 | 109-25315-00-00 | FLANGE, SPACER | 1 | |
| 8 | 304-25364-01-00 | DAMPER | 4 | |
| 9 | 1M3-25321-02-38 | PLATE, BRAKE SHOE | 1 | |
| 10 | 10X-W2536-00-00 | BRAKESHOE SET-2PCS | 2 | |
| 11 | 90506-16150-00 | SPRING, TENSION (102-25333-00) | 2 | |
| 12 | 3Y6-25351-00-00 | CAMSHAFT | 1 | |
| 13 | 1T9-25355-00-00 | LEVER, CAMSHAFT | 1 | |
| 14 | 90101-06278-00 | BOLT | 1 | |
| 15 | 95380-06600-00 | NUT | 1 | |
| 16 | 296-25366-01-98 | CLUTCH, HUB | 1 | |
| 17 | 167-25387-00-00 | AXLE, SPROCKET | 1 | |
| 18 | 93106-30004-00 | OIL SEAL | 1 | |
| 19 | 93306-00406-00 | BEARING (B6004Z) | 1 | |
| 20 | 13M-25449-20-00 | SPROCKET, DRVN 49T | 1 | |
| | 2U2-25448-10-00 | SPROCKET, DRIVEN (48T) | 1 | |
| | 4U5-25447-10-00 | SPROCKET, DRVN47T (1T9-25446-10-33) | 1 | |
| 21 | 90101-08672-00 | BOLT | 4 | |
| 22 | 102-25412-00-00 | WASHER | 2 | |
| 23 | 90179-08639-00 | NUT, SPEC'L SHAPE (30) | 4 | |
| 24 | 94130-16368-00 | TIRE (3.00-16) | 1 | |
| 25 | 94230-16075-00 | TUBE (3.00-16) | 1 | |



| | | |
|--------------------------------|--|---|
| Minimum Brake Lining Thickness | Front: 2mm | Rear: 2mm |
| Tire Size (Nominal Pressure) | F: 2.50-16 (1.0kg/cm ² /14 psi) | R: 3.00-16(1.2kg/cm ² /17 psi) |

CONTINUED ON NEXT FRAME ►

REAR WHEEL

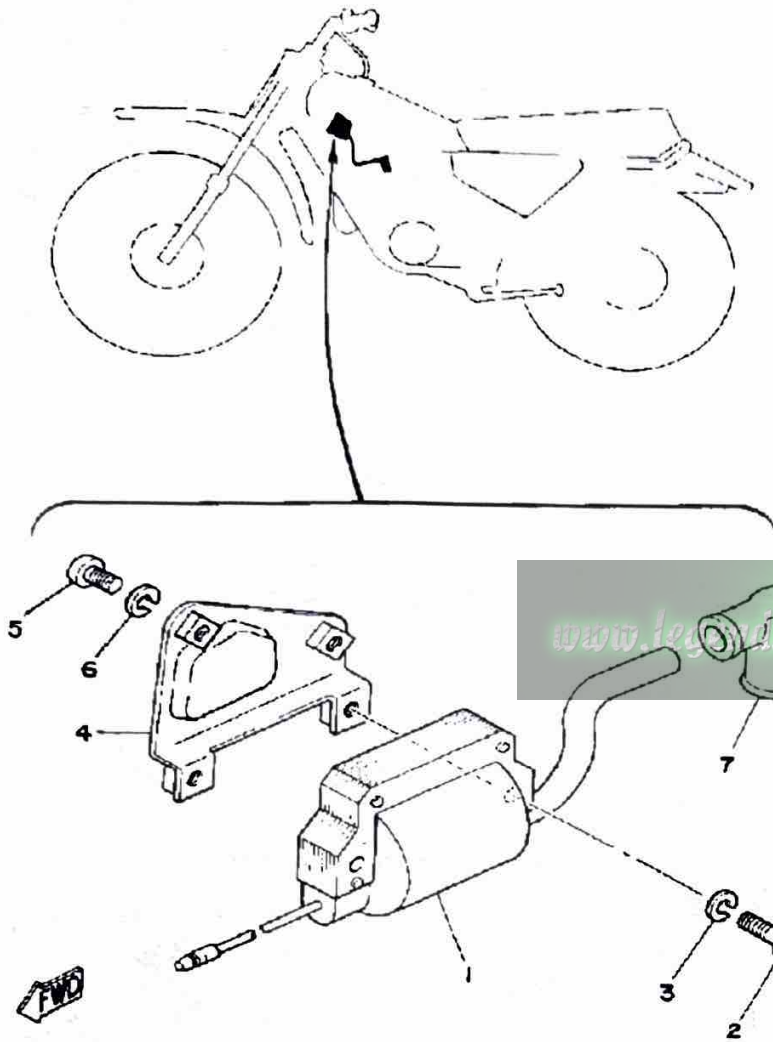


| Ref. No. | Part Number | Description | Qty | Remarks |
|----------|-----------------|--------------------------|-----|---------|
| 26 | 94330-16058-00 | BAND, RIM (3.00-16) | 1 | |
| 27 | 94416-16224-00 | RIM (1.60-16) | 1 | |
| 28 | 538-25304-10-00 | SPOKE SET, REAR | 1 | |
| 29 | 5X2-25394-00-00 | SPACER, BEAD | 1 | |
| 30 | 94500-03104-00 | CHAIN DRIVE (RS420-104L) | 1 | |
| 31 | 94600-03001-00 | JOINT, CHAIN | 1 | |
| 32 | 1T9-25371-00-00 | BAR, TENSION | 1 | |
| 33 | 90109-08183-00 | BOLT | 1 | |
| 34 | 90468-10050-00 | CLIP | 1 | |
| 35 | 90109-08368-00 | BOLT | 1 | |
| 36 | 95303-08700-00 | NUT | 2 | |
| 37 | 92990-08100-00 | WASHER | 2 | |
| 38 | 91490-20020-00 | PIN, COTTER | 1 | |
| 39 | 390-25381-01-00 | AXLE, WHEEL | 1 | |
| 40 | 90171-10004-00 | NUT, CASTLE | 1 | |
| 41 | 91490-20020-00 | PIN, COTTER | 1 | |
| 42 | 90387-12102-00 | COLLAR | 1 | |
| 43 | 90387-18144-00 | COLLAR | 1 | |
| 44 | 90170-18165-00 | NUT | 1 | |
| 45 | 241-25388-00-00 | PULLER, CHAIN 1 | 1 | |
| 46 | 241-25389-10-00 | PULLER, CHAIN 2 | 1 | |
| 47 | 90101-06016-00 | BOLT | 2 | |
| 48 | 95380-06600-00 | NUT | 2 | |

ELECTRICAL 1

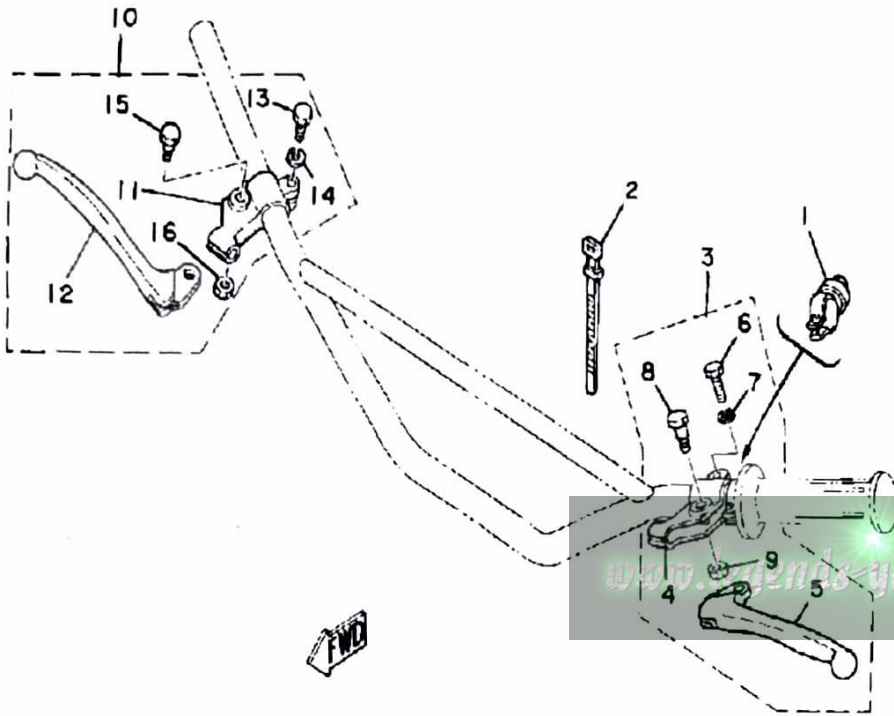
| Ref. No. | Part Number | Description | Qty | Remarks |
|----------|-------------|-------------|-----|---------|
|----------|-------------|-------------|-----|---------|

| | | | | |
|---|-----------------|--|---|--|
| 1 | 5G4-82310-40-00 | IGNITION COIL ASSEMBLY (J17-82310-21) | 1 | |
| 2 | 98511-06025-00 | SCREW PAN HEAD (92501-06025) | 2 | |
| 3 | 92995-06100-00 | WASHER, SPRING | 2 | |
| 4 | 336-82316-01-00 | BRACKET, IGNITION COIL ... | 1 | |
| 5 | 98580-06012-00 | SCREW, PAN HEAD | 2 | |
| 6 | 92995-06100-00 | WASHER, SPRING | 2 | |
| 7 | 81E-82370-20-00 | PLUG CAP ASSEMBLY | 1 | |



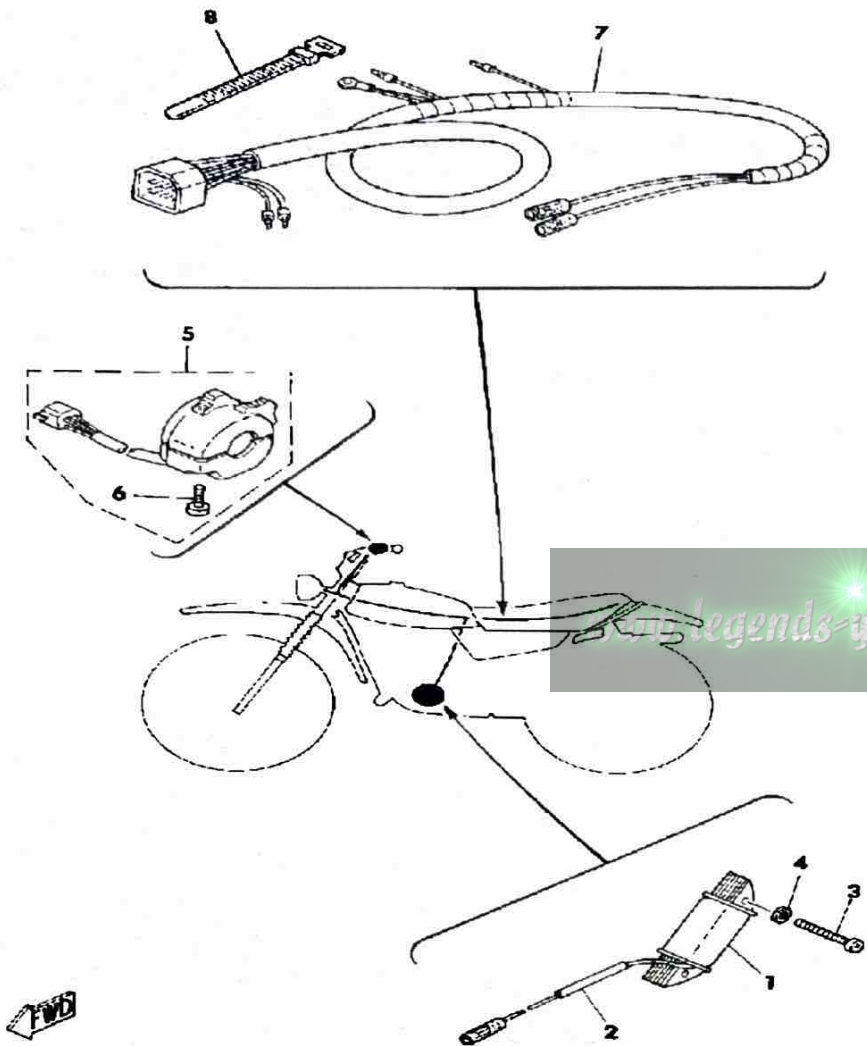
HANDLE SWITCH - LEVER

| Ref. No. | Part Number | Description | Qty | Remarks |
|----------|-------------------|--------------------------------|-----|---------|
| 1 | 3M1-83976-00-00 | SWITCH, HANDLE 1 | 1 | |
| 2 | 437-83936-01-00 | BAND, SWITCH CORD | 2 | |
| 3 | 214-82910-06-00 | LEVER HOLDER ASSEMBLY 1 | 1 | |
| 4 | 214-82911-01-00 | HOLDER, LEVER 1 | 1 | |
| 5 | 214-83912-00-00 | LEVER 1 | 5 | |
| 6 | 97003-06022-00 | BOLT, HEXAGON (97301-06022) | 1 | |
| 7 | 92995-06100-00 | WASHER, SPRING | 1 | |
| 8 | 90109-06797-00 | BOLT | 1 | |
| 9 | 95601-06100-00 | NUT, U | 1 | |
| 10 | (233-82920-34-00) | LEVER HOLDER ASSEMBLY 2 | 1 | |
| 11 | 233-82921-31-00 | HOLDER, LEVER 2 | 1 | |
| 12 | 233-83922-30-00 | LEVER R | 1 | |
| 13 | 97003-06022-00 | BOLT, HEXAGON (97301-06022) | 1 | |
| 14 | 92995-06100-00 | WASHER, SPRING | 1 | |
| 15 | 90109-06797-00 | BOLT | 1 | |
| 16 | 95601-06100-00 | NUT, U | 1 | |



www.friends-yamaha.com

LIGHTING (OPTIONAL PARTS)



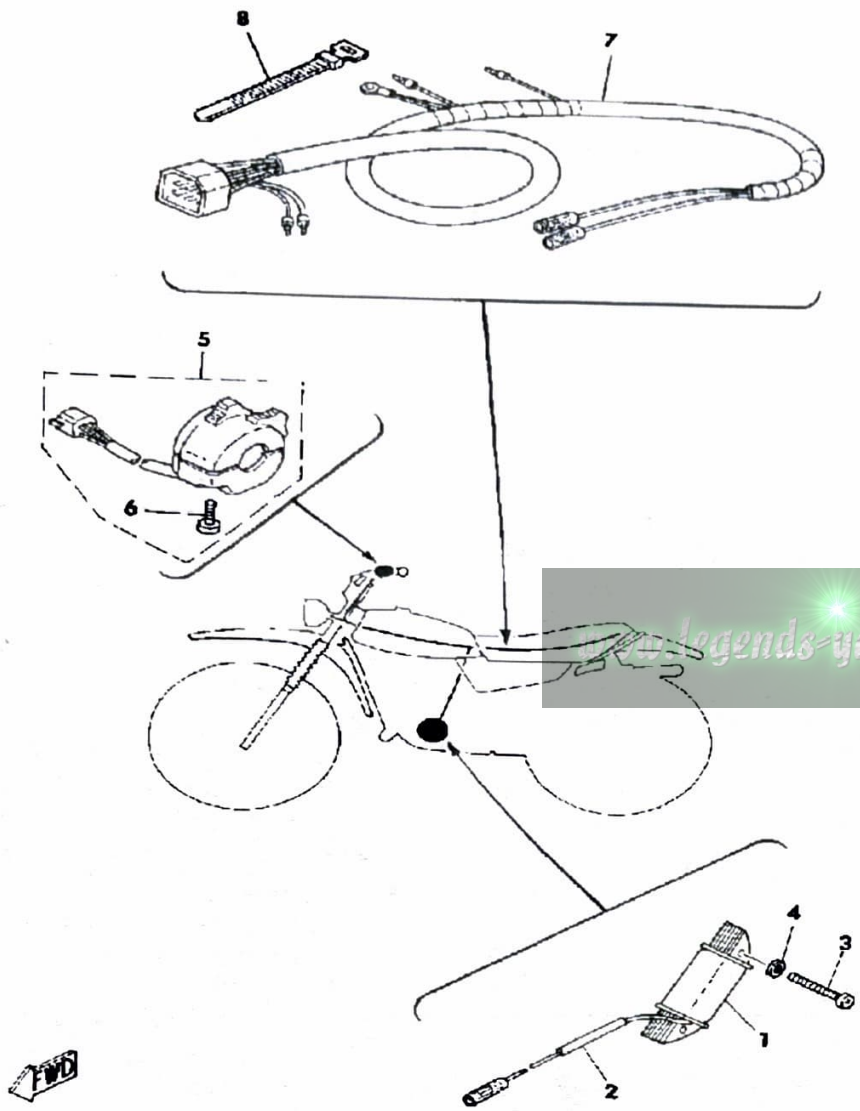
| Ref. No. | Part Number | Description | Qty | Remarks |
|----------|-------------------|---------------------------|-----|---------|
| 1 | (3M2-85513-20-00) | COIL, LIGHTING 1 | 1 | |
| 2 | (3M2-85515-21-00) | LEAD WIRE ASSEMBLY | 1 | |
| 3 | 98511-04030-00 | SCREW, PAN HEAD | 2 | |
| 4 | 92901-04100-00 | WASHER, SPRING | 2 | |
| 5 | 1W2-83973-00-98 | SWITCH, HANDLE 3 | 1 | |
| 6 | 98580-05020-00 | SCREW, PAN HEAD | 2 | |
| 7 | (3T0-82590-90-00) | WIRE HARNESS ASSEMBLY .. | 1 | |
| 8 | 437-83936-01-00 | BAND, SWITCH CORD | 2 | |
| 9 | (1W2-84110-60-00) | UNAVAILABLE IN PRICE BOOK | 1 | N/A |
| 10 | (1W2-84115-60-00) | RIM, HEADLIGHT | 1 | |
| 11 | 1W2-84144-60-00 | . COVER, HEADLIGHT | 1 | |
| 12 | 3R8-84120-60-00 | . LENS ASSEMBLY | 1 | |
| 13 | 527-84114-09-XX | . BULB, HL 6V25/25W | 1 | |
| 14 | 1W2-84112-60-00 | . SOCKET | 1 | |
| 15 | 1W2-84324-60-00 | . SPRING, REFLECTOR | 4 | |
| 16 | 1W2-84130-60-00 | BODY ASSEMBLY, HEADLIGHT | 1 | |
| 17 | (1W2-84145-60-00) | COLLAR, BODY FTNG | 2 | |
| 18 | 1L9-84338-60-00 | . COLLAR, BODY FTNG | 2 | |
| 19 | 1W2-84143-00-00 | DAMPER, HDLT STAY | 2 | |
| 20 | 92902-08100-00 | WASHER, SPRING | 2 | |
| | 92990-08100-00 | WASHER | 2 | |
| 21 | 95333-08600-00 | NUT | 2 | |
| 22 | (3M1-84118-00-00) | STAY, HEADLIGHT 1 | 1 | |
| 23 | (3M1-84119-00-00) | STAY, HEADLIGHT 2 | 1 | |
| 24 | 98580-06020-00 | SCREW | 2 | |
| 25 | 92995-06100-00 | WASHER, SPRING | 2 | |
| 26 | 92901-06600-00 | WASHER | 2 | |
| 27 | 92901-08600-00 | WASHER | 2 | |
| 28 | 92990-08100-00 | WASHER | 2 | |

SEE GRID E2 AND E3 FOR CONTINUATION OF PARTS AND ILLUSTRATION.

CONTINUED ON NEXT FRAME ►

LIGHTING (OPTIONAL PARTS)

| Ref. No. | Part Number | Description | Qty | Remarks |
|----------|-------------------|---------------------------|-----|---------|
| 29 | 95303-08800-00 | NUT (CROWN) (95301-08800) | 2 | |
| 30 | 98580-05016-00 | SCREW, PAN HEAD | 1 | |
| 31 | 92990-05100-00 | WASHER, SPRING | 1 | |
| 32 | 434-84500-64-00 | TAILLIGHT ASSEMBLY | 1 | |
| 33 | 434-84521-69-00 | . LENS, TAILLIGHT | 1 | |
| 34 | 434-84515-61-00 | . RIM, TAILLIGHT | 1 | |
| 35 | 122-84514-30-00 | . BULB | 1 | |
| 36 | 434-84517-61-00 | . CORD, TAILLIGHT | 1 | |
| 37 | 434-84522-62-00 | . WASHER | 2 | |
| 38 | 434-84524-61-00 | . SCREW, LENS FITTING | 2 | |
| 39 | 434-84519-64-00 | . BRACKET, TAILLIGHT | 1 | |
| 40 | 434-84500-64-00 | . TAILLIGHT ASSEMBLY | 1 | |
| 41 | (434-84557-60-00) | COLLAR | 2 | |
| 42 | 90201-05031-00 | WASHER, PLATE | 2 | |
| 43 | 92990-05100-00 | WASHER, SPRING | 2 | |
| 44 | 95380-05600-00 | NUT | 2 | |
| 45 | (90462-08003-00) | CLAMP | 1 | |
| 46 | 90480-15058-00 | GROMMET | 1 | |

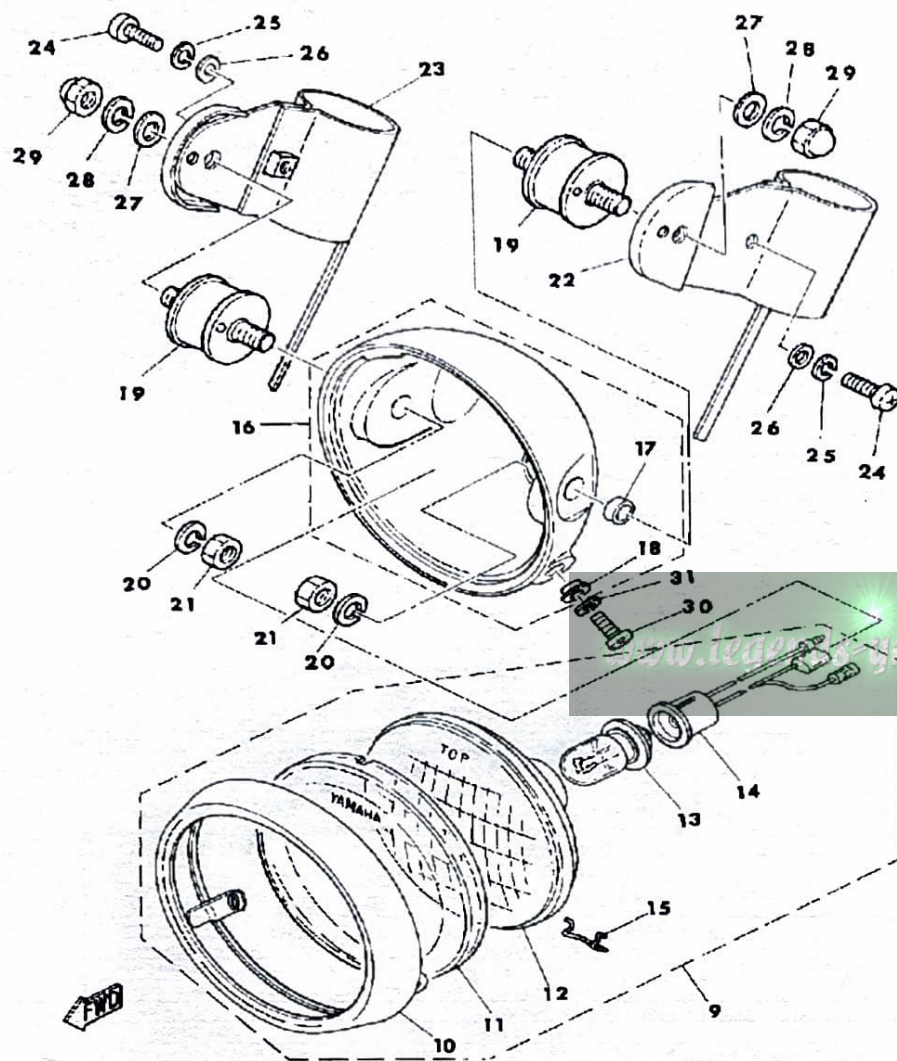


SEE GRID E2 AND E3 FOR CONTINUATION OF PARTS AND ILLUSTRATION.

LIGHTING (OPTIONAL PARTS ILLUSTRATIC

| Ref. No. | Part Number | Description | Qty | Remarks |
|----------|-------------|-------------|-----|---------|
|----------|-------------|-------------|-----|---------|

| | | | | |
|----|-----------------|-----------|--|--|
| 46 | UNA-VAILA-BL-EI | 0 0 | | |
|----|-----------------|-----------|--|--|



SEE GRID E1 AND E3 FOR CONTINUATION OF PARTS & ILLUSTRATION

MX100G 1980 SERVICE DATA

MOTORCYCLE
M79-043

| | | |
|---|---|-----|
| MODEL — IBM I.D. NUMBER | MX100G | 3T0 |
| Initial Engine Number/Frame Number | 3T0-000101 / 3T0-000101 | |
| Basic Color(s) | Clean White | |
| Fuel Type/Fuel Tank Capacity/Reserve Capacity | Regular / 4.6 Lit. (1.2 Gal) / 0.3 Lit. (0.08 Gal.) | |
| Dry Vehicle Weight | 77 kg (170 lb.) | |
| ENGINE TYPE | 2-Stroke, Air Cooled, Reed Valve | |
| Bore/Stroke/Number Cylinders/Displacement (cc) | 52 / 45.6mm / 1 / 97cc | |
| Compression Ratio/Compression Pressure min~max | 6.7:1 / N/A | |
| Piston Skirt Clearance new/max. | 0.035 ~ 0.040mm / 0.1mm | |
| Ring End Gap Top/2nd/3rd | 0.3 ~ 0.5mm / 0.3 ~ 0.5mm / ϕ | |
| Valve Clearance (cold) Intake/Exhaust | ϕ | |
| Oil Pressure Hot/rpm | ϕ | |
| Oiling System | Autolube | |
| Capacity: Dry | 1.0 Lit. | |
| Oil and Filter Change | ϕ | |
| Oil Change | ϕ | |
| Lubricant: Temp above 5°C (40°F) | Yamalube 2* | |
| Below 15°C (60°F) | Yamalube 2* | |
| AUTOLUBE — Min. Stroke/Color Code | 0.20 ~ 0.25mm / Green | |
| Minimum Output @ 200 cycles | 0.50 ~ 0.62 cc | |
| Maximum Output @ 200 cycles | 4.65 ~ 5.15 cc | |
| CARBURETOR — Mfr./Type/I.D. Number | Mikuni / VM22SS / 3M100 | |
| Main Jet/Pilot Jet | 130 / 17.5 | |
| Needle Jet/Jet Needle-Clip Position | 0-6 / 4L6-3 | |
| Slide Cutaway or Throttle Valve | 2.0 | |
| Float Level | 21 ± 1mm | |
| Idle rpm | ϕ | |
| CO % @ Idle (Diagnostic Use Only) | ϕ | |
| SUSPENSION | | |
| Front Forks: Oil Type/Level/Qty. | 20 wt. Fork Oil / ϕ / 116cc | |
| Gas Pressure | ϕ | |
| Spring Length Std. | 418.5mm | |
| Monoshock: Oil Type/Qty. | ϕ | |
| Gas Pressure | ϕ | |
| Minimum Brake Lining Thickness | Front: 2mm Rear: 2mm | |
| Tire Size (Nominal Pressure) | F: 2.50-18 (1.0kg/cm ² /14 psi) R: 3.00-16 (1.2kg/cm ² /17 psi) | |
| TRANSMISSION — Oil Type/Qty Chg/Qty Reassemble | SAE 10W30 SE / 650 cc / 650 cc | |
| Primary Drive Type/Teeth/Ratio | Helical Gear / 74-19 / 3.895 | |
| Secondary Drive Type/Teeth/Chain | Chain / 48-14 / RS420-104L | |
| Clutch Friction Plate Thickness Std ~ Min. | 3.0 ~ 2.7mm | |
| Clutch Spring Length Std ~ Min. | 31.5 ~ 30.5mm | |
| Middle Gear Case Capacity | ϕ | |
| Final Gear Case Capacity | ϕ | |
| Gear Case Lubricant: Temp above 5°C (40°F) | ϕ | |
| Temp below 15°C (60°F) | ϕ | |
| All Weather Conditions | ϕ | |

Service Copy: _____ Service Mgr. _____ Mechanic _____ Mechanic _____ Mechanic _____ Binder

Office Copy: _____ General Mgr. _____ Sales _____ Parts _____ Binder

©1979 YAMAHA MOTOR CORPORATION, U.S.A. CYPRESS, CALIF.

September 15, 1979 PAGE 1 OF 2

| | |
|--|--|
| CHARGING SYSTEM | Flywheel Magneto |
| Battery: Model / Spec. Grav. / Chg. Rate | ϕ |
| Maximum Output | ϕ |
| TROUBLESHOOTING | |
| Field Coil Color Code / Ω | ϕ |
| Charge Coil Color Code / Ω | ϕ |
| IGNITION SYSTEM | Capacitor Discharge Ignition |
| Ignition Timing | 1.8mm BTDC |
| Spark Plug Type | NGK B-7ES |
| Spark Plug Gap / Torque / Cap Ω | 0.6 ~ 0.8mm / 2.3 m·kg / 5K Ω ± 20% |
| Point Gap / Condenser Capacitance | ϕ |
| TROUBLESHOOTING | |
| Ignition Coil Test Gap / Primary Ω / Secondary Ω | 8mm / 1.0 Ω ± 10% / 5.9K Ω ± 20% |
| Pulse Coil or Pick-up Coil Color Code / Ω | Wht-Red ~ Gnd / 10 Ω ± 10% |
| Source Coil Color Code / Ω | Brn ~ Gnd / 300 Ω ± 10% |
| LIGHTING SYSTEM | |
| Headlight / Taillight / Signal Rating | ϕ |
| TROUBLESHOOTING | |
| Lighting Coil Color Code / Ω | ϕ |
| TORQUE VALUES | |
| Front Axle Nut | 12 x 1.25: 4.3 m·kg |
| Front Axle Holder Nut | ϕ |
| Rear Axle Nut | 10 x 1.25: 3.9 m·kg |
| Rear Axle Pinch Bolt | ϕ |
| Clutch Nut | 12 x 1.0: 4.5 m·kg |
| Drain Plug | 12 x 1.5: 2.5 m·kg |
| Cylinder Head Cover | ϕ |
| Cylinder Head: | 8 x 1.25: 2.5 m·kg |
| Engine Mounting Bolts: Front, Upper | 8 x 1.25: 2.6 m·kg |
| Rear, Upper | 8 x 1.25: 2.6 m·kg |
| Rear, Lower | 10 x 1.25: 3.9 m·kg |

ϕ Does Not Apply to This Model

* Available From Yamaha Parts Distributors, Inc.

PAGE 2 OF 2

K1

| | |
|--|-------------------------------------|
| CHARGING SYSTEM | Flywheel Magneto |
| Battery: Model / Spec. Grav. / Chg. Rate | φ |
| Maximum Output | φ |
| TROUBLESHOOTING | |
| Field Coil Color Code / Ω | φ |
| Charge Coil Color Code / Ω | φ |
| IGNITION SYSTEM | Capacitor Discharge Ignition |
| Ignition Timing | 1.8mm BTDC |
| | |
| Spark Plug Type | NGK B-7ES |
| Spark Plug Gap / Torque / Cap Ω | 0.6 ~ 0.8mm / 2.3 m·kg / 5K Ω ± 20% |
| Point Gap / Condenser Capacitance | φ |
| TROUBLESHOOTING | |
| Ignition Coil Test Gap / Primary Ω / Secondary Ω | 6mm / 1.0 Ω ± 10% / 5.9K Ω ± 20% |
| Pulse Coil or Pick-up Coil Color Code / Ω | Whi-Red ~ Gnd / 10 Ω ± 10% |
| Source Coil Color Code / Ω | Blk ~ Gnd / 300 Ω ± 10% 10% |
| LIGHTING SYSTEM | |
| Headlight / Taillight / Signal Rating | φ |
| TROUBLESHOOTING | |
| Lighting Coil Color Code / Ω | φ |
| TORQUE VALUES | |
| Front Axle Nut | 12 x 1.25: 4.3 m·kg |
| Front Axle Holder Nut | φ |
| Rear Axle Nut | 10 x 1.25: 3.9 m·kg |
| Rear Axle Pinch Bolt | φ |
| Clutch Nut | 12 x 1.0: 4.5 m·kg |
| Drain Plug | 12 x 1.5: 2.5 m·kg |
| Cylinder Head Cover | φ |
| Cylinder Head: | 8 x 1.25: 2.5 m·kg |
| | |
| Engine Mounting Bolts: Front, Upper | 8 x 1.25: 2.6 m·kg |
| Rear, Upper | 8 x 1.25: 2.6 m·kg |
| Rear, Lower | 10 x 1.25: 3.9 m·kg |
| | |
| | |

φ Does Not Apply to This Model

* Available From Yamaha Parts Distributors, Inc.

www.legends-yamaha-enduros.com