



**YAMAHA**

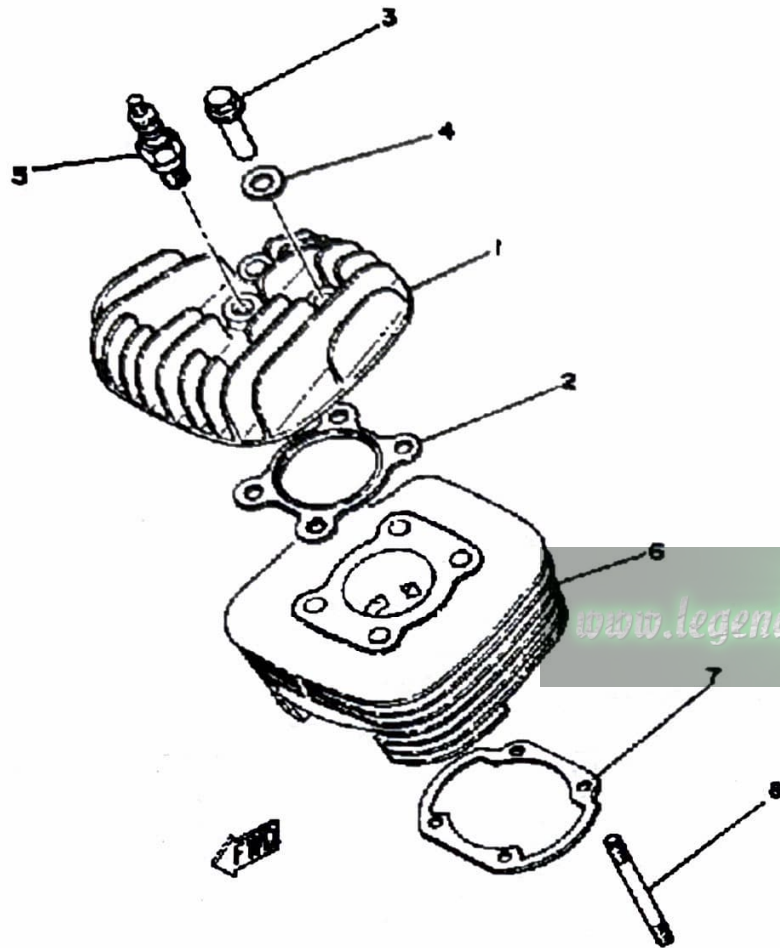
**GENUINE**

**PARTS CATALOGUE**

**MOTORCYCLE**

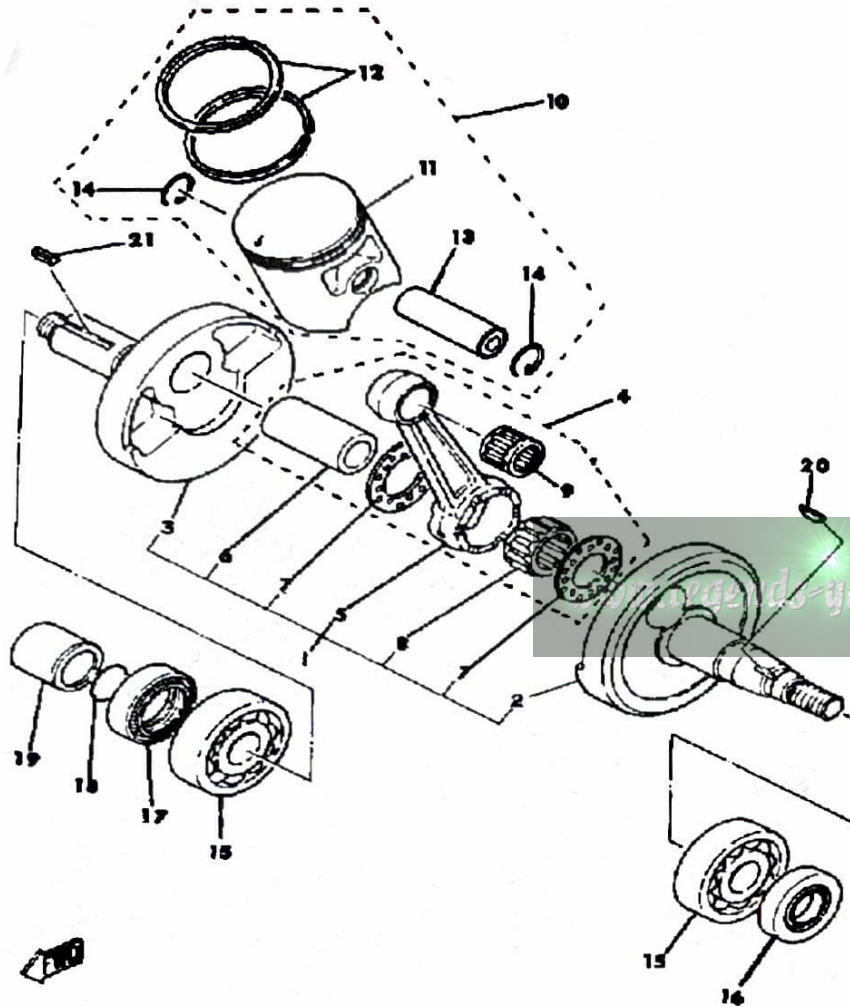
[www.legends-yamaha-enduros.com](http://www.legends-yamaha-enduros.com)

# CYLINDER HEAD - CYLINDER MX100H .



Ref. No.	Part Number	Description	Qty	Remarks
1	1T9-11111-00-00	HEAD, CYLINDER 1 .....	1	
2	304-11181-70-00	GASKET, CYLINDER HEAD 1 .	1	
3	90179-08303-00	NUT .....	4	
4	90201-12362-00	WASHER, PLATE .....	4	
5	NGK-B7ES0-00-00	NGK B7ES 10PK (94701-00044)	1	
6	1T9-11311-00-00	CYLINDER 1 .....	1	
7	3UL-11351-00-00	GASKET, CYLINDER .....	1	
8	90116-08065-00	BOLT, STUD .....	4	

# CRANKSHAFT - PISTON MX100H - J - K

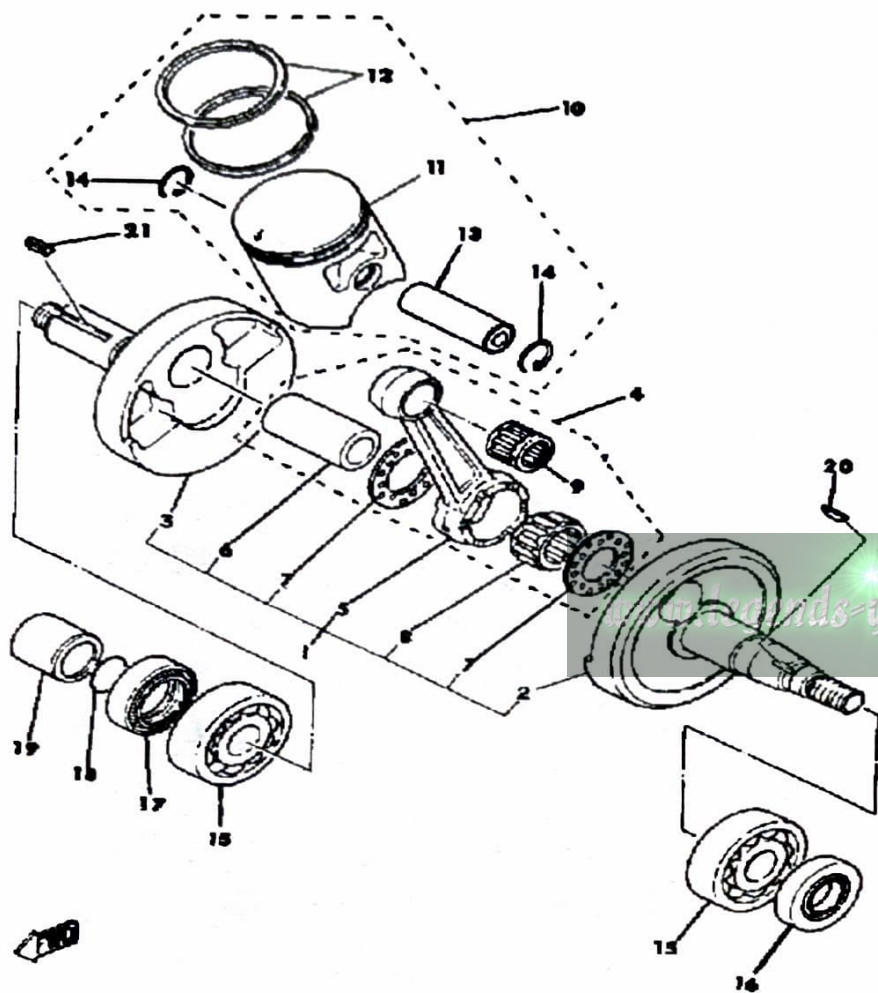


Ref. No.	Part Number	Description	Qty	Remarks
1	558-11400-00-00	CRANKSHAFT ASSEMBLY ...	1	
2	558-11412-00-00	. CRANK 1 .....	1	
3	(558-11422-00-00)	CRANK 2 .....	1	
4	1M7-11650-00-00	. CONNECTING ROD ASSEMBLY (558-11650-01) ..	1	
5	1M7-11651-00-00	. . ROD, CONNECTING .....	1	
6	5E2-11681-00-00	. . PIN, CRANK 1 .....	1	
7	90209-22248-00	. . WASHER .....	2	
8	93310-422E7-00	. . BEARING .....	1	
9	93310-21403-00	. BEARING .....	1	U.R.
10	558-11630-00-00	PISTON KIT STD .....	1	
	558-11630-10-00	PISTON KIT 1ST .....	1	ALT. PRT
	558-11630-20-00	PISTON KIT 2ND .....	1	ALT. PRT
	558-11630-30-00	PISTON KIT 3RD .....	1	ALT. PRT
	558-11630-40-00	PISTON KIT 4TH .....	1	ALT. PRT
11	558-11631-01-96	. PISTON STD .....	1	U.R. (K)
	558-11635-01-00	. PISTON 1 O/S 0.25 (52.25MM 1ST O.S.) .....	1	ALT. PRT
	558-11636-01-00	. PISTON 2 O/S 0.50 (52.50MM 2ND O.S.) .....	1	ALT. PRT
	558-11637-01-00	. PISTON 3 O/S 0.75 (52.75MM 3RD O.S.) .....	1	ALT. PRT
	558-11638-01-00	. PISTON 4 O/S 1.00 (53.00MM 4TH O.S.) .....	1	ALT. PRT
12	558-11610-00-00	. PISTON RINGSET STD .....	1	
	558-11610-10-00	. PISTON RINGSET 1ST (1ST O.S.) .....	1	ALT. PRT
	558-11610-20-00	. PISTON RINGSET 2ND (2ND O.S.) .....	1	ALT. PRT
	558-11610-30-00	. PISTON RINGSET 3RD (3RD O.S.) .....	1	ALT. PRT

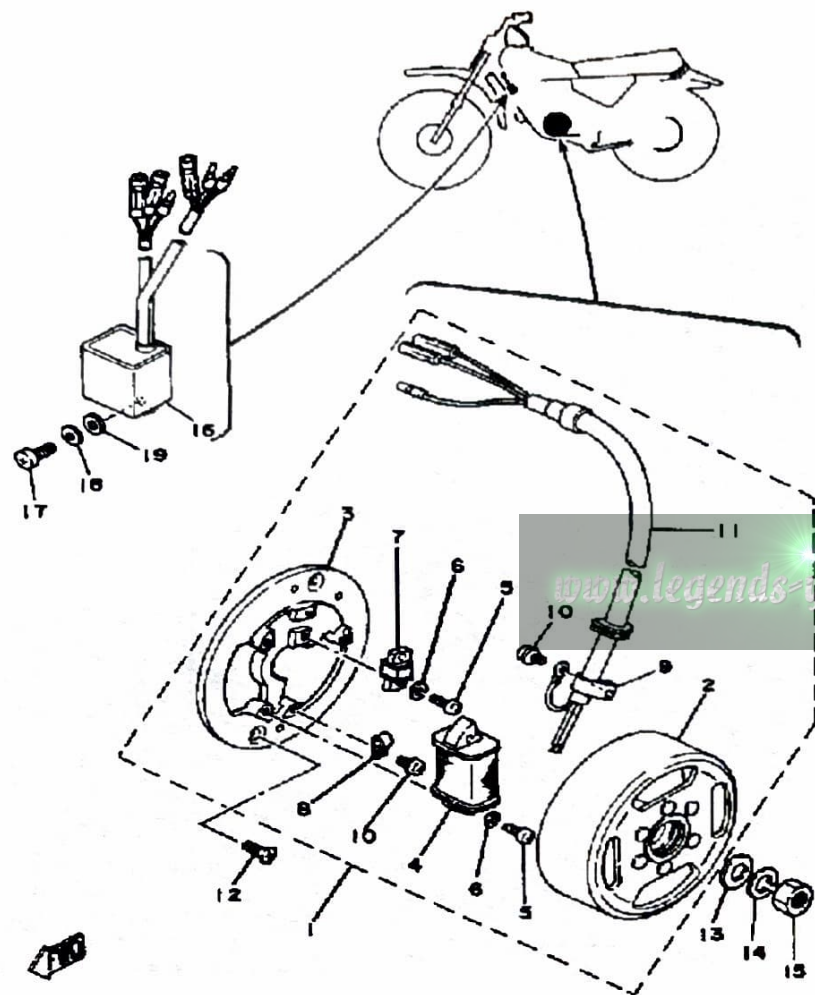
CONTINUED ON NEXT FRAME ►

# CRANKSHAFT - PISTON MX100H - J - K

Ref. No.	Part Number	Description	Qty	Remarks
12	558-11610-40-00	. PISTON RINGSET 4TH (4TH O.S.)	1	ALT. PRT
13	131-11633-00-00	. PIN, PISTON	1	
14	93450-15023-00	. CIRCLIP	2	
15	93306-30421-00	BEARING (B6304C3)	2	
16	93102-20447-00	OIL SEAL	1	
17	93103-28011-00	OIL SEAL	1	
18	93210-180A6-00	O-RING	1	
19	90387-20175-00	COLLAR	1	
20	90280-03017-00	KEY, WOODRUFF	1	
21	90282-05005-00	KEY, STRAIGHT	1	



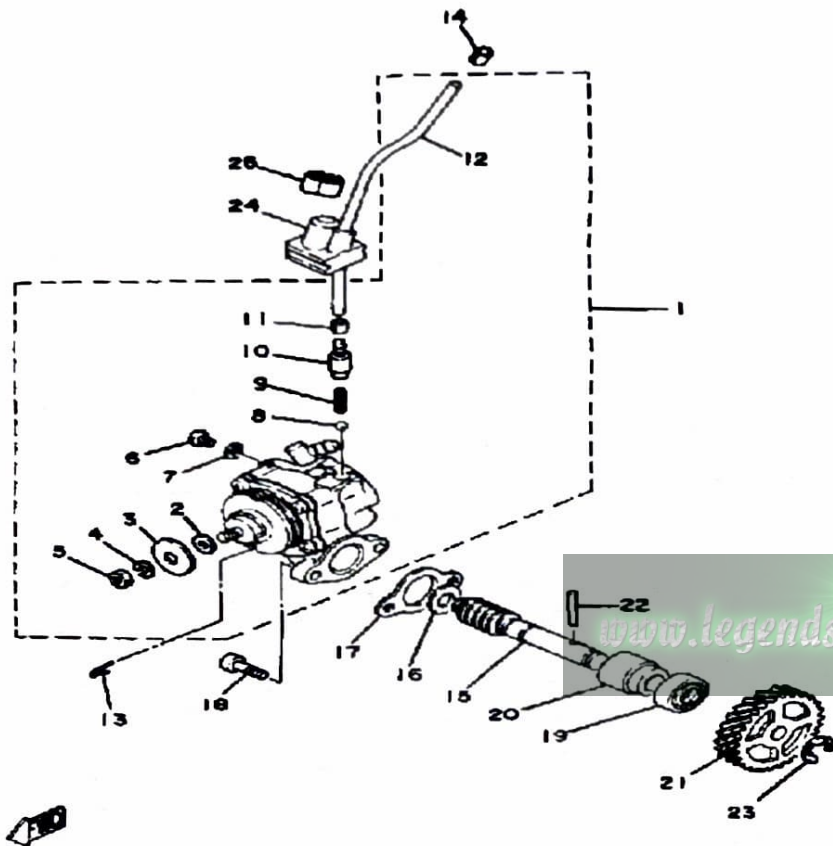
# C - D - I - MAGNETO MX100H - J - K



Ref. No.	Part Number	Description	Qty	Remarks
1	3M2-85500-90-00	C D I MAGNETO ASSEMBLY. .	1	
2	3M2-85550-20-00	. ROTOR ASSEMBLY . . . . .	1	
3	3M2-85509-21-00	. BASE, MAGNETO . . . . .	1	
4	3M2-85512-20-00	. COIL, SOURCE . . . . .	1	
5	98503-04014-00	. SCREW, PAN HEAD . . . . .	3	
6	92901-04100-00	. WASHER, SPRING . . . . .	3	
7	3M2-85580-20-00	. COIL, PULSER . . . . .	1	
8	(445-85528-20-00)	CLAMP, LEAD . . . . .	1	
9	104-81328-20-00	. CLAMP . . . . .	1	
10	97601-04106-00	. SCREW, PN/HD.W/WSHR . . .	2	
11	3M2-85515-20-00	. LEAD WIRE ASSEMBLY . . . .	1	
12	98603-06012-00	SCREW, OVAL HEAD (92701-06012) . . . . .	2	
13	90201-12535-00	WASHER, PLATE . . . . .	1	
14	92901-12100-00	WASHER, SPRING . . . . .	1	
15	90170-12175-00	NUT . . . . .	1	
16	3T0-85540-20-00	C.D.I. UNIT ASSEMBLY . . . . .	1	
17	98503-06014-00	SCREW, PAN HEAD (92502-06016) . . . . .	1	
18	92995-06100-00	WASHER, SPRING . . . . .	1	
19	92901-06600-00	WASHER . . . . .	1	

# OIL PUMP MX100H - J - K

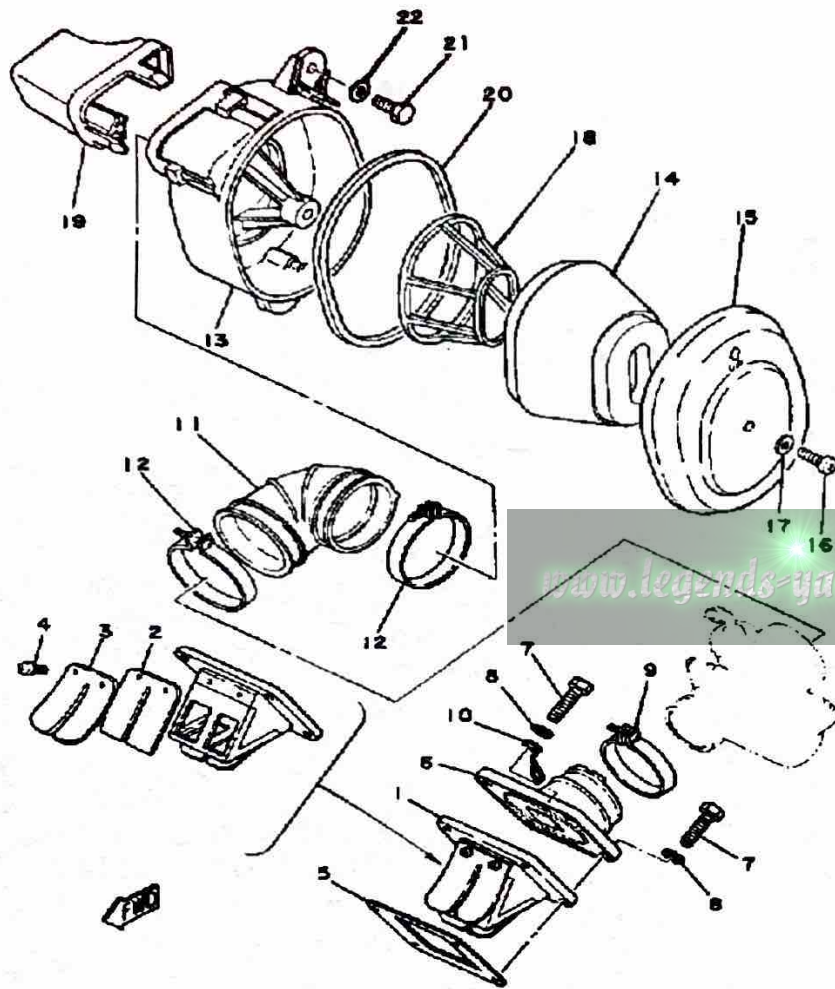
Ref. No.	Part Number	Description	Qty	Remarks
1	558-13101-01-00	OIL PUMP ASSEMBLY .....	1	
2	137-13137-00-03	. SHIM (0.3T) .....	1	U.R. U.N.
	137-13137-00-05	. SHIM (0.5T) .....	1	U.R. U.N.
	137-13137-00-10	. SHIM (1.0T) .....	1	U.R. U.N.
3	137-13138-01-00	. PLATE, ADJUSTING .....	1	
4	92990-05100-00	. WASHER, SPRING .....	1	
5	95380-05600-00	. NUT .....	1	
6	98901-04008-00	. SCREW, BIND .....	1	
7	90430-04004-00	. GASKET .....	1	
8	93505-32002-00	. BALL .....	1	
9	90501-02018-00	. SPRING, COMPRESSION ....	1	
10	402-13552-00-00	. NOZZLE .....	1	
11	90468-02033-00	. CLIP .....	1	
12	90445-05278-00	. HOSE .....	1	
13	367-13146-01-00	CLIP .....	1	
14	90468-02033-00	CLIP .....	1	
15	275-13175-01-00	SHAFT, WORM .....	1	
16	90201-08624-00	WASHER, PLATE .....	1	
17	3MT-13116-00-00	GASKET, PUMP CASE (8Y0-13116-00) .....	1	
18	98580-05016-00	SCREW, PAN HEAD .....	2	
19	93101-10002-00	OIL SEAL .....	1	
20	1E7-13176-00-00	METAL, WRM SHAF OTR ....	1	
21	248-13178-00-00	GEAR, DRIVE (28T) .....	1	
22	93603-22028-00	PIN, DOWEL .....	1	
23	99001-08600-00	CIRCLIP .....	1	
24	525-13174-00-00	HOLDER, OIL PIPE .....	1	
25	90468-15020-00	CLIP .....	1	



MX100H/J/K

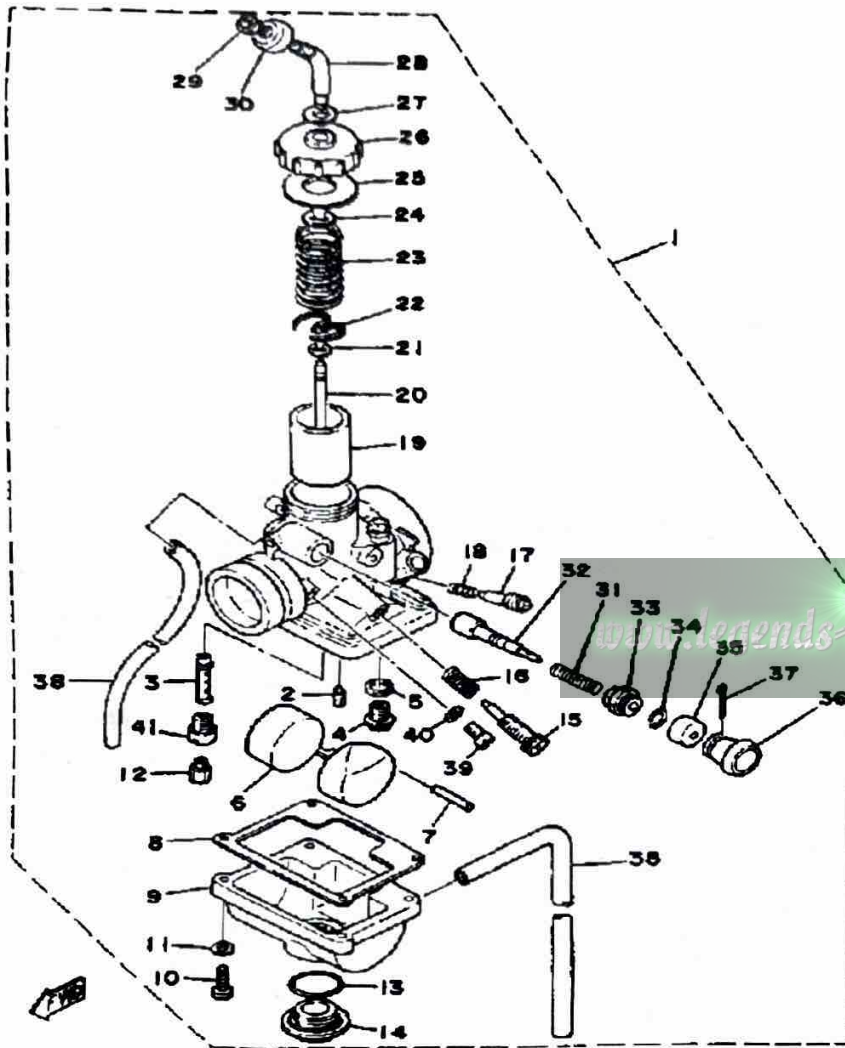
Oiling System	Autolube
Capacity: Dry*	1.0 Lit. (1.0 Qt.)
Oil and Filter Change	ø
Oil Change	ø
Lubricant: Temp. Above 5°C (40°F)	Yamalube 2 <sup>+</sup> or Equivalent
Temp. Below 15°C (60°F)	Yamalube 2 <sup>+</sup> or Equivalent
<b>AUTOLUBE - Min Strokes / Color Code</b>	0.20 ~ 0.25mm / Green
Minimum Output @ 200 Cycles	0.50cc ~ 0.62cc
Maximum Output @ 200 Cycles	4.65cc ~ 5.15cc

# INTAKE MX100H - J - K



Ref. No.	Part Number	Description	Qty	Remarks
1	558-13610-00-00	REED VALVE ASSEMBLY	1	
2	345-13613-70-00	. REED, VALVE	2	
3	558-13616-00-00	. STOPPER, REED VALVE	2	
4	98580-03008-00	. SCREW, PAN HEAD	4	
5	87A-13621-00-00	GASKET, VALVE SEAT	1	
6	560-13565-00-00	JOINT, CARBURETOR	1	
7	97011-06025-00	BOLT (97001-06025)	4	
8	92901-06600-00	WASHER	4	
9	90460-43053-00	CLAMP, HOSE	1	
10	90462-20029-00	CLAMP	1	
11	1T9-14453-00-00	JOINT, AIR CLNR 1	1	
12	90460-51059-00	CLAMP, HOSE	2	
13	1T9-14411-00-00	CASE, AIR CLEANER 1	1	
14	1T9-14450-00-00	ELEMENT ASSEMBLY, AIR CLEANER	1	
15	1T9-14412-00-00	CAP, CLEANER CASE 1	1	
16	98580-06018-00	SCREW, PAN HEAD	1	
17	92901-06600-00	WASHER	1	
18	1T9-14458-00-00	GUIDE	1	
19	1T9-14437-00-00	DUCT	1	
20	3V6-14416-00-00	GASKET, AIR CLEANER	1	
21	97313-06016-00	BOLT, HEXAGON	1	
22	90201-06067-00	WASHER, PLATE	1	

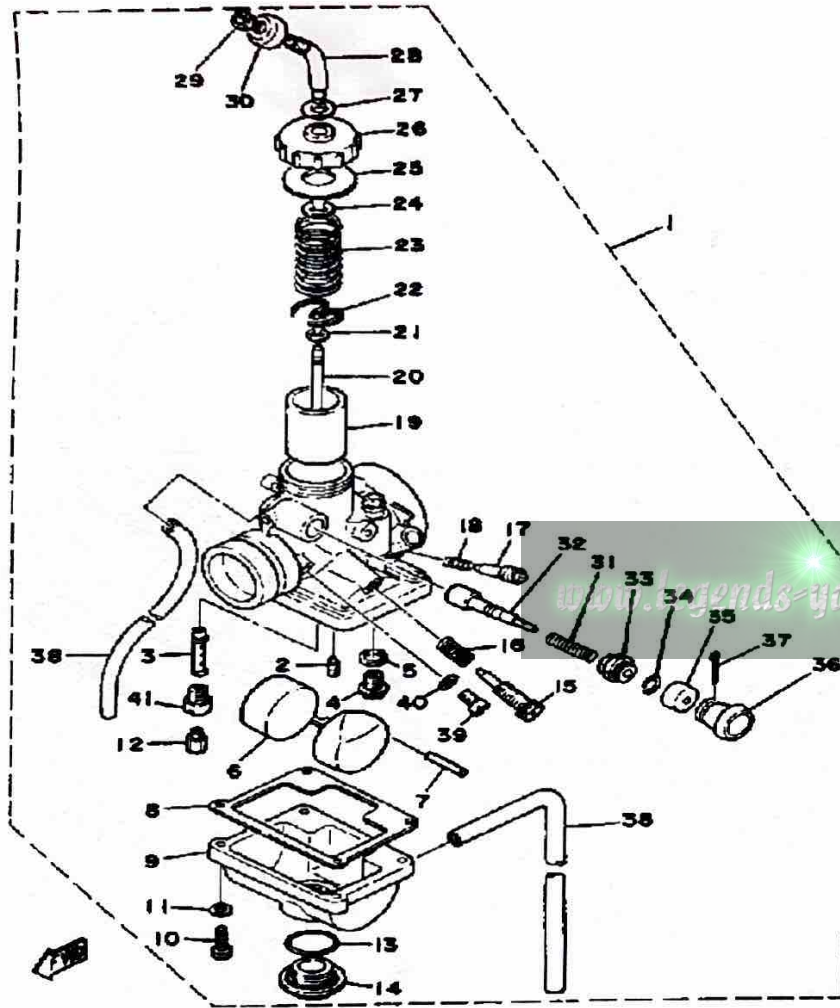
# CARBURETOR MX100H - J - K



Ref. No.	Part Number	Description	Qty	Remarks
1	3M1-14101-00-00	CARBURETOR ASSEMBLY 1	1	
2	260-14142-17-00	. JET, PILOT (#17.5)	1	
3	2F5-14141-36-00	. NOZZLE, MAIN	1	
4	353-14190-15-00	. NEEDLE VALVE ASSEMBLY	1	
5	127-14195-00-00	. WASHER, NEEDLE VALVE	1	
6	304-14185-00-00	. FLOAT	1	
7	127-14186-00-00	. PIN, FLOAT	1	
8	304-14184-00-00	. GASKET, FLOAT CHAMBER	1	
9	539-14181-06-00	. BODY, FLOAT CHMBR 1	1	
10	98503-04014-00	. SCREW, PAN HEAD	4	
11	92901-04100-00	. WASHER, SPRING	4	
12	137-14143-25-A0	. JET, MAIN #1 5	1	U.R.
	137-14143-26-A0	. JET, MAIN (#130)	1	U.R. STD
	137-14143-27-00	. JET, MAIN (#135)	1	U.R.
13	558-14147-00-00	. O-RING	1	
14	500-14115-00-00	. PLUG, SCREW	1	
15	493-14122-00-00	. SCREW, THROTTLE (443-14122-00)	1	
16	493-14133-00-00	. SPRING, THRTL STOP	1	
17	22K-14104-00-00	. AIR SCREW SET	1	
18	174-14134-00-00	. SPRING, AIR ADJUSTING	1	
19	304-14112-20-00	. VALVE, THROTTLE 1	1	
20	18L-1490J-00-00	. NEEDLE	1	
21	164-14137-00-00	. CLIP	1	
22	137-14136-00-00	. SEAT, SPRING	1	
23	3X3-14131-00-00	. SPRING, THRTL VALVE	1	
24	363-14137-00-00	. CLIP	1	
25	193-14126-00-00	. GASKET	1	
26	1T9-14158-00-00	. TOP, MIXING CHAMBER	1	

CONTINUED ON NEXT FRAME ►

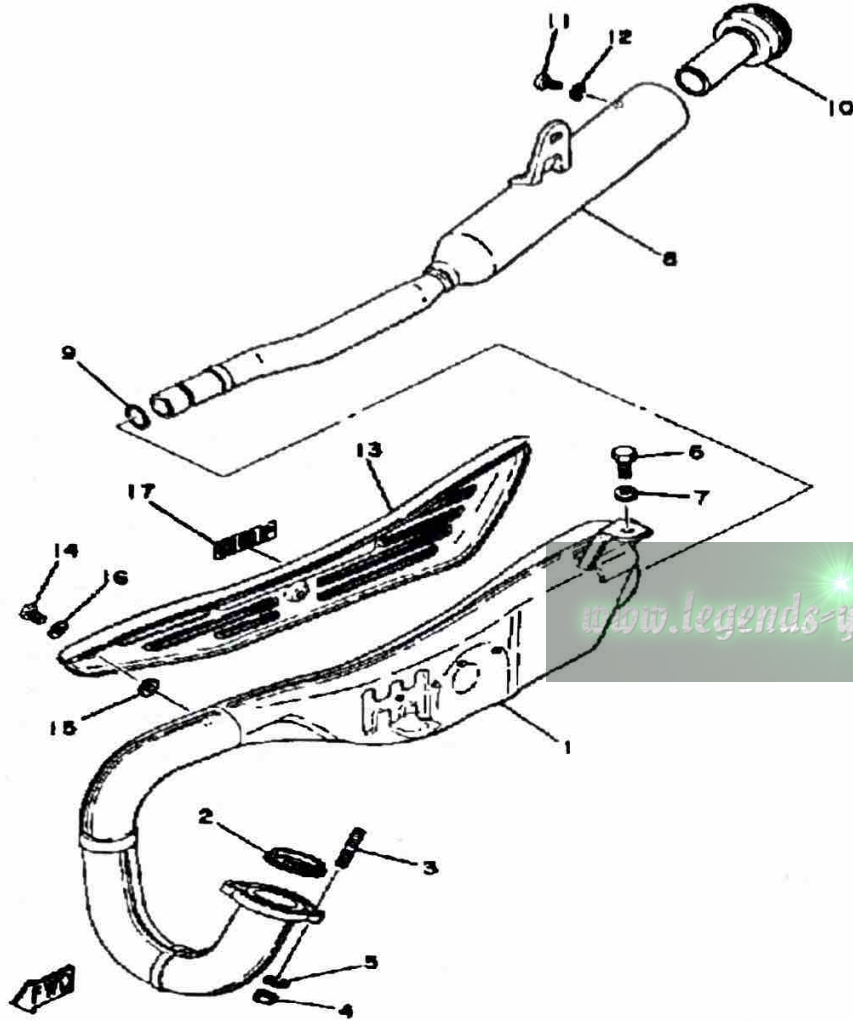
# CARBURETOR MX100H - J - K



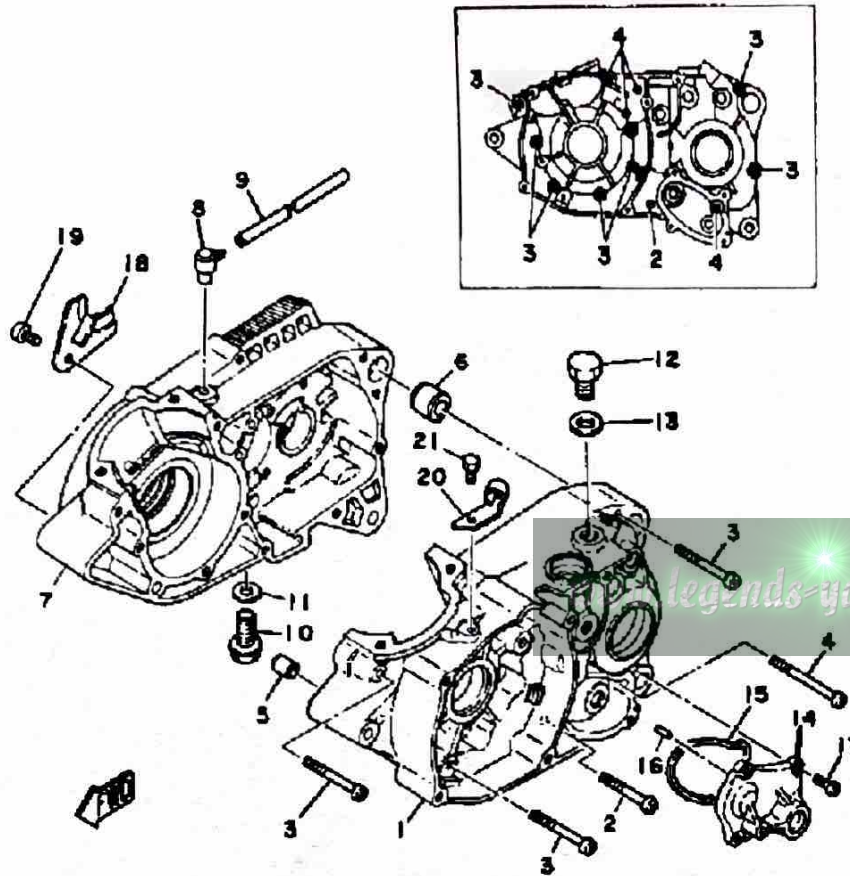
Ref. No.	Part Number	Description	Qty	Remarks
27	509-14198-00-00	. GASKET .....	1	
28	10X-14106-00-00	. CABLE ADJUST SCREW SET	1	
29	127-14161-00-00	. NUT, CABLE ADJUSTING ...	1	
30	1M1-14169-00-00	. CAP .....	1	
31	156-14135-00-00	. SPRING, PLUNGER .....	1	
32	304-14171-00-00	. PLUNGER, STARTER .....	1	
33	152-14174-00-00	. CAP, PLUNGER .....	1	
34	152-14138-00-00	. CLIP, PLUNGER .....	1	
35	132-14173-00-00	. COVER, PLUNGER CAP ....	1	
36	304-14261-00-00	. HOLDER .....	1	
37	91490-16020-00	. PIN, COTTER .....	1	
38	23F-14197-00-00	. PIPE, AIRVENT .....	2	
39	2F5-14115-00-00	. PLUG, SCREW .....	1	
40	584-14956-00-00	. WASHER .....	1	
41	2F5-14145-00-00	. SETTER, NEEDLE JET .....	1	

# EXHAUST MX100H - J - K

Ref. No.	Part Number	Description	Qty	Remarks
1	3UL-14610-00-00	EXHAUST PIPE ASSEMBLY ..	1	
2	152-14613-00-00	GASKET, EXST PIPE .....	1	
3	90116-06016-00	BOLT, STUD .....	2	
4	95380-06600-00	NUT .....	2	
5	92995-06100-00	WASHER, SPRING .....	2	
6	97313-08018-00	BOLT, HEXAGON (97301-08016)	1	
7	92990-08200-00	WASHER, PLAIN .....	1	
8	1T9-14753-00-00	SILENCER, EXHAUST .....	1	
9	93210-16290-00	O-RING .....	1	
10	438-14752-00-00	PIPE, OUTLET .....	1	
11	98580-06010-00	SCREW, PAN HEAD (92503-06010)	1	
12	92995-06100-00	WASHER, SPRING .....	1	
13	(1T9-14718-00-E1)	PROTECTOR, MUFF 1 .....	1	CHAPPY RED
	1T9-14718-00-36	PROTECTOR, MUFF 1 .....	1	CLEAN WHITE
14	90202-05187-00	WASHER, PLATE .....	3	
15	90202-05187-00	WASHER, PLATE .....	3	
16	90202-05005-00	WASHER, PLATE (218-14766-10)	3	
17	3T0-14729-00-00	EMBLEM, PROTECTOR .....	1	

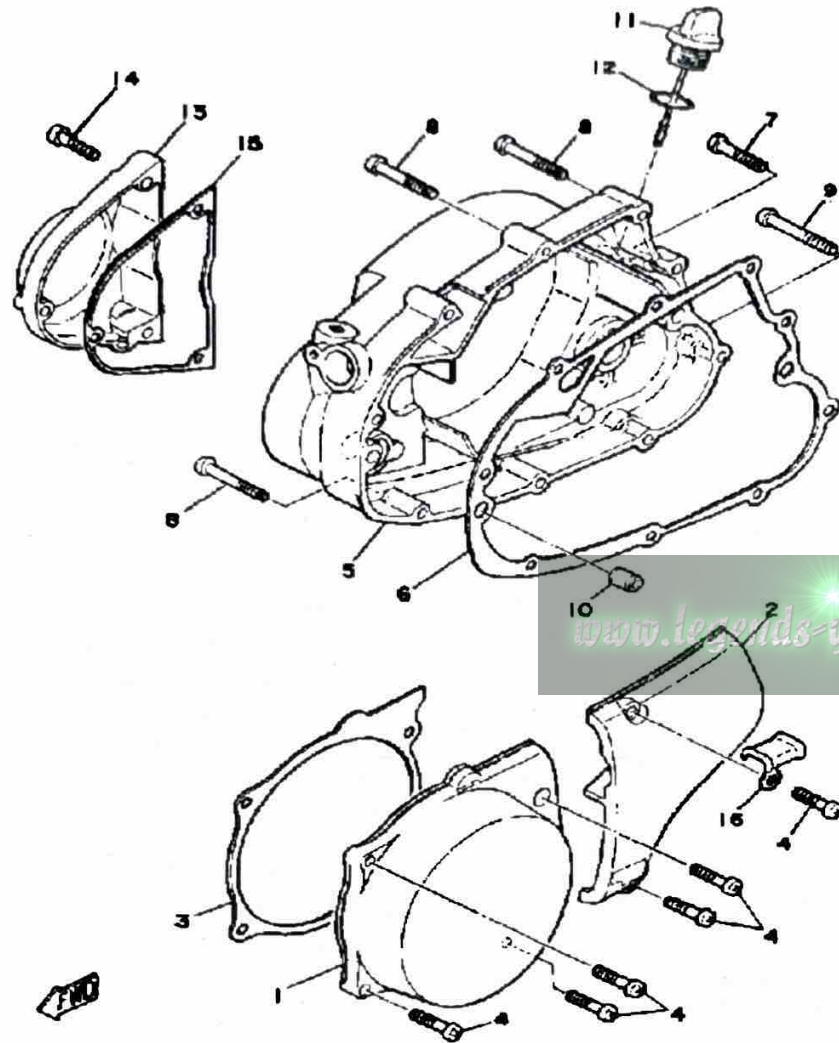


# CRANKCASE MX100H - J - K



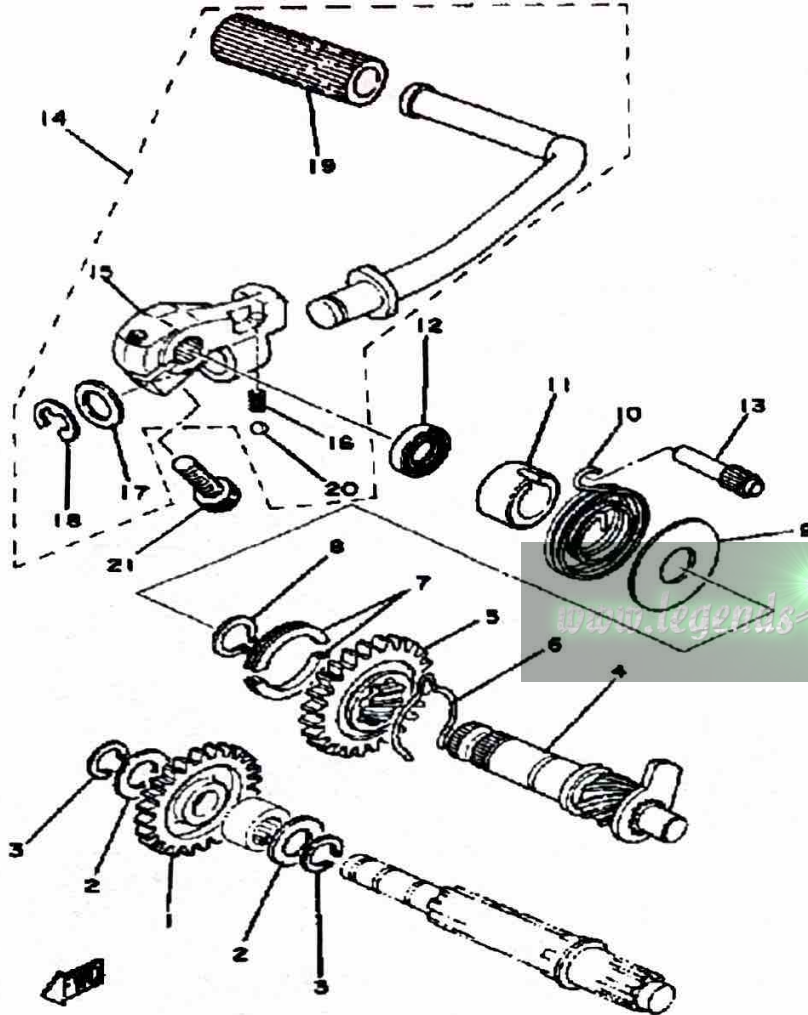
Ref. No.	Part Number	Description	Qty	Remarks
1	1T9-15111-00-00	CRANKCASE 1 .....	1	
2	98580-06040-00	SCREW, pan head (92501-06040-00) .....	1	
3	98580-06550-00	SCREW PAN HEAD (92503-06050) .....	7	
4	92580-06560-00	SCREW PAN HEAD .....	4	
5	99530-10014-00	PIN, DOWEL .....	1	
6	99530-14016-00	PIN, DOWEL .....	1	
7	1T9-15121-01-00	CRANKCASE 2 .....	1	
8	583-15371-00-00	BREATHER .....	1	
9	90445-07176-00	HOSE .....	1	
10	90340-12005-00	PLUG, DRAIN .....	1	
11	90430-12207-00	GASKET .....	1	
12	90340-12004-00	PLUG, STRAIGHT SCREW ....	1	
13	37R-82543-00-00	GASKET .....	1	
14	437-15419-01-00	COVER, SHIFTER 1 .....	1	
15	401-15449-00-00	RING, RUBBER .....	1	
16	93603-12007-00	PIN, DOWEL .....	2	
17	98503-06014-00	SCREW, PAN HEAD (92502-06016) .....	4	
18	304-15128-00-00	HOLDER .....	1	
19	92501-08010-00	SCREW, PAN HEAD .....	1	
20	401-15441-02-00	HOLDER, CLUTCH CABLE ...	1	
21	97013-06012-00	BOLT .....	1	

# CRANKCASE COVER MX100H - J - K



Ref. No.	Part Number	Description	Qty	Remarks
1	1X0-15411-00-00	COVER, CRANKCASE L	1	
2	401-15421-00-00	COVER, CRANKCASE R	1	
	401-15421-00-00	COVER, CRANKCASE R	2	
3	1X0-15455-00-00	GASKET 1	1	
4	98580-06020-00	SCREW	6	
5	401-15431-00-00	COVER, CRANKCASE 3	1	
6	401-15451-00-00	GASKET, CRCS COVERCRANKCASE COVER 1	1	
7	98580-06030-00	SCREW PAN HEAD	3	
8	98580-06040-00	SCREW, pan head (92501-06040-00)	5	
9	98580-06545-00	SCREW PAN HEAD (92503-06045)	1	
10	99530-10014-00	PIN, DOWEL	2	
11	401-15362-00-00	PLUG, OIL LEVEL	1	
12	93210-19123-00	O-RING	1	
13	1X0-15416-00-00	COVER, OIL PUMP	1	
14	98511-06025-00	SCREW PAN HEAD (92501-06025)	3	
15	3UL-15456-00-00	GASKET, OIL PUMP COVER 1	1	
16	90461-10016-00	CLAMP	1	

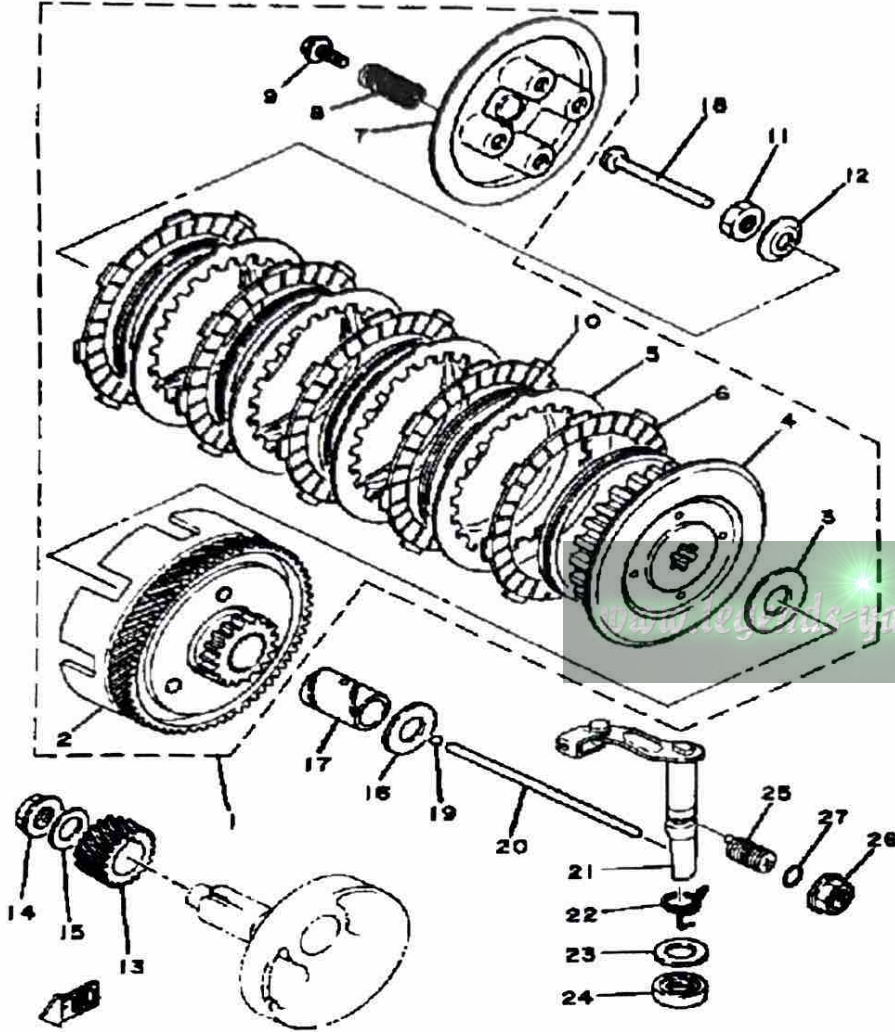
# KICK STARTER MX100H - J - K



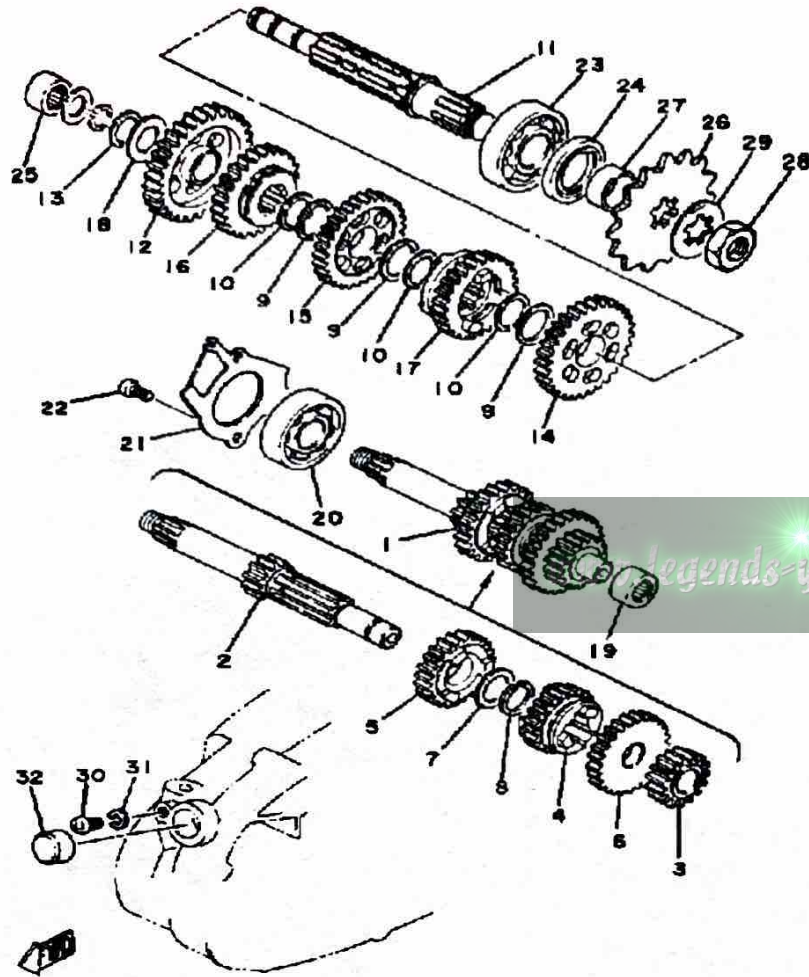
Ref. No.	Part Number	Description	Qty	Remarks
1	525-15651-00-00	GEAR, KICK IDLE (25T) .....	1	
2	137-17417-00-05	SHIM 1 (0.5T) .....	2	
3	93440-15012-00	CIRCLIP .....	2	
4	403-15660-01-00	KICK AXLE ASSEMBLY (403-15660-02-00) .....	1	
5	315-15641-00-00	GEAR, KICK (27T) .....	1	
6	90468-26048-00	CLIP .....	1	
7	248-15654-00-00	HOLDER, KICK GEAR .....	2	
8	99009-30400-00	CIRCLIP .....	1	
9	401-15676-00-00	COVER, SPRING .....	1	
10	90508-26041-00	SPRING, TORSION .....	1	
11	1W1-15666-00-00	SPACER .....	1	
12	93101-17062-00	OIL SEAL .....	1	
13	257-15668-00-00	STOPPER .....	1	
14	3UL-15620-00-00	KICK CRANK ASSEMBLY .....	1	
15	1T9-15621-00-00	BOSS, KICK CRANK .....	1	
16	90501-12081-00	SPRING, COMPRESSION .....	1	
17	90201-15234-00	WASHER, PLATE .....	1	
18	99006-10600-00	CIRCLIP .....	1	
19	156-15618-01-00	COVER, KICK LEVER .....	1	
20	93507-32031-00	BALL .....	1	
21	91316-08025-00	BOLT, SOCKET HEAD .....	1	

# CLUTCH MX100H - J - K

Ref. No.	Part Number	Description	Qty	Remarks
1	(1V1-16301-10-00)	CLUTCH ASSEMBLY	1	
2	1V1-16150-10-00	. PRIMARY DRIVEN GEAR COMP. (74T)	1	
3	131-16154-00-00	. PLATE, THRUST 1	1	
4	1V1-16371-02-00	. BOSS, CLUTCH	1	
5	1V1-16324-00-00	. PLATE, CLUTCH 1	4	
6	598-16321-01-00	. PLATE, FRICTION	5	
7	598-16351-00-00	. PLATE, PRESSURE 1	1	
8	90501-20125-00	. SPRING, COMPRESSION	4	
9	90119-05001-00	BOLT, WITH WASHER	4	
10	1V1-16367-00-00	. RING, CUSHION	5	
11	90170-12060-00	NUT	1	
12	90208-12015-00	WASHER, CONICAL SPRING	1	
13	336-16111-00-00	GEAR, PRIMARY DRIVE (19T)	1	
14	90179-12244-00	NUT, SPEC'L SHAPE	1	
15	90208-12015-00	WASHER, CONICAL SPRING	1	
16	90201-17558-00	WASHER, PLATE	1	
17	90560-17147-00	SPACER	1	
18	137-16356-00-00	ROD, PUSH 1	1	
19	93503-16010-00	BALL	1	
20	1X0-16357-00-00	ROD, PUSH 2	1	
21	525-16380-00-00	PUSH LEVER ASSEMBLY	1	
22	90508-14132-00	SPRING, TORSION	1	
23	90201-14217-00	WASHER, PLATE	1	
24	93104-14059-00	OIL SEAL, SO-TYPE	1	
25	90149-12097-00	SCREW	1	
26	90179-12197-00	NUT	1	
27	93210-10096-00	O-RING	1	



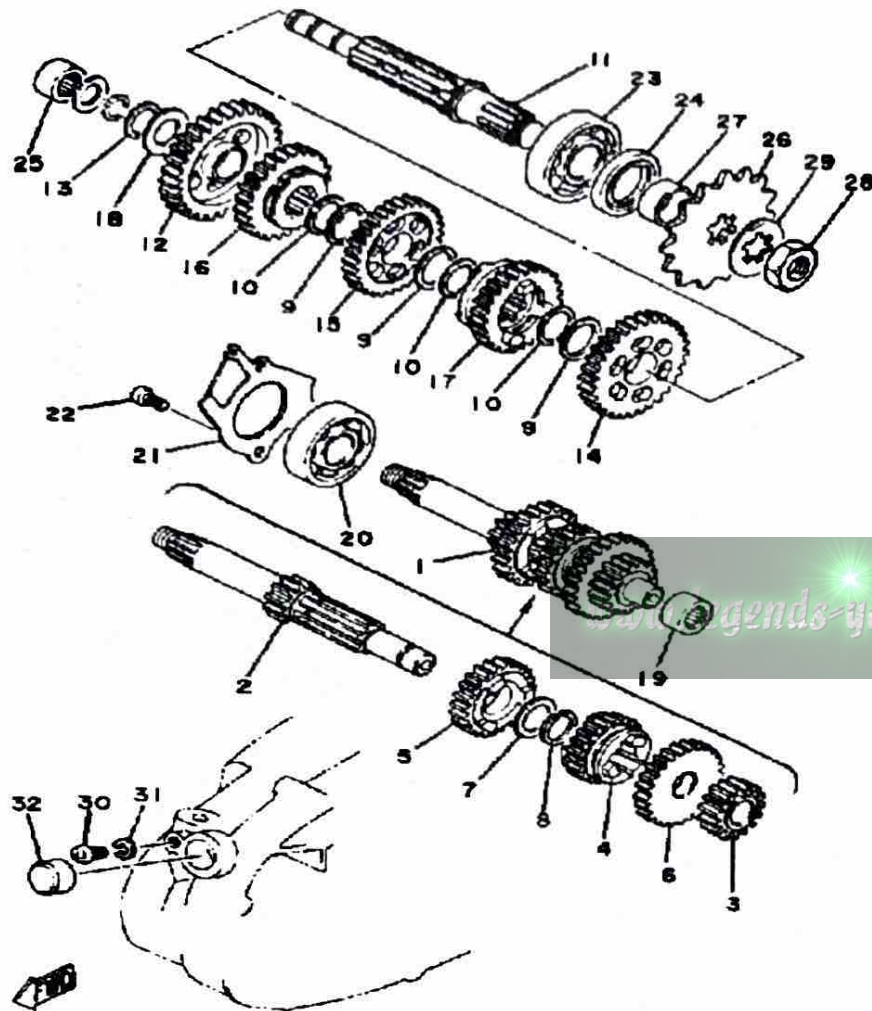
# TRANSMISSION MX100H - J - K



Ref. No.	Part Number	Description	Qty	Remarks
1	(558-17410-00-00)	MAIN AXLE .....	1	
2	558-17411-00-00	. AXLE, MAIN (11T) .....	1	
3	437-17121-02-00	. GEAR, 2ND PINION .....	1	
4	427-17131-00-00	. GEAR, 3RD PINION (19T) ....	1	
5	(437-17141-00-00)	GEAR, 4TH PINION .....	1	
6	437-17151-00-00	. GEAR, 5TH PINION (25T) ....	1	
7	90201-20266-00	. WASHER, PLATE (1.0T) .....	1	
8	93410-20038-00	. CIRCLIP .....	1	
9	90201-20266-00	WASHER, PLATE (1.0T) .....	3	
10	93410-20038-00	CIRCLIP .....	3	
11	558-17421-00-00	AXLE, DRIVE .....	1	
12	248-17211-00-00	GEAR, 1ST WHEEL (35T) .....	1	
13	93440-15012-00	CIRCLIP .....	1	
14	427-17221-00-00	GEAR, 2ND WHEEL (30T) ....	1	
15	427-17231-00-00	GEAR, 3RD WHEEL (26T) ....	1	
16	248-17241-00-00	GEAR, 4TH WHEEL (23T) ....	1	
17	437-17251-00-00	GEAR, 5TH WHEEL (20T) ....	1	
18	164-17427-00-06	SHIM 1 (0.6T) .....	1	
19	93315-31502-00	BEARING .....	1	
20	93306-30309-00	BEARING .....	1	
21	1G8-17471-00-00	PLATE, COVER .....	1	
22	98580-06012-00	SCREW, PAN HEAD .....	2	
23	93306-30421-00	BEARING (B6304C3) .....	1	
24	93102-26042-00	OIL SEAL .....	1	
25	93311-31567-00	BEARING, CYLINDRICAL ....	1	
26	93812-13022-00	SPROCKET, DRIVE 13T .....	1	U.R. ALT. PART
	93812-14035-00	SPROCKET, DRIVE 14T (5171746142) .....	1	U.R. STD
	93812-15063-00	SPROCKET, DRIVE 15T (5171746152) .....	1	U.R. ALT. PART

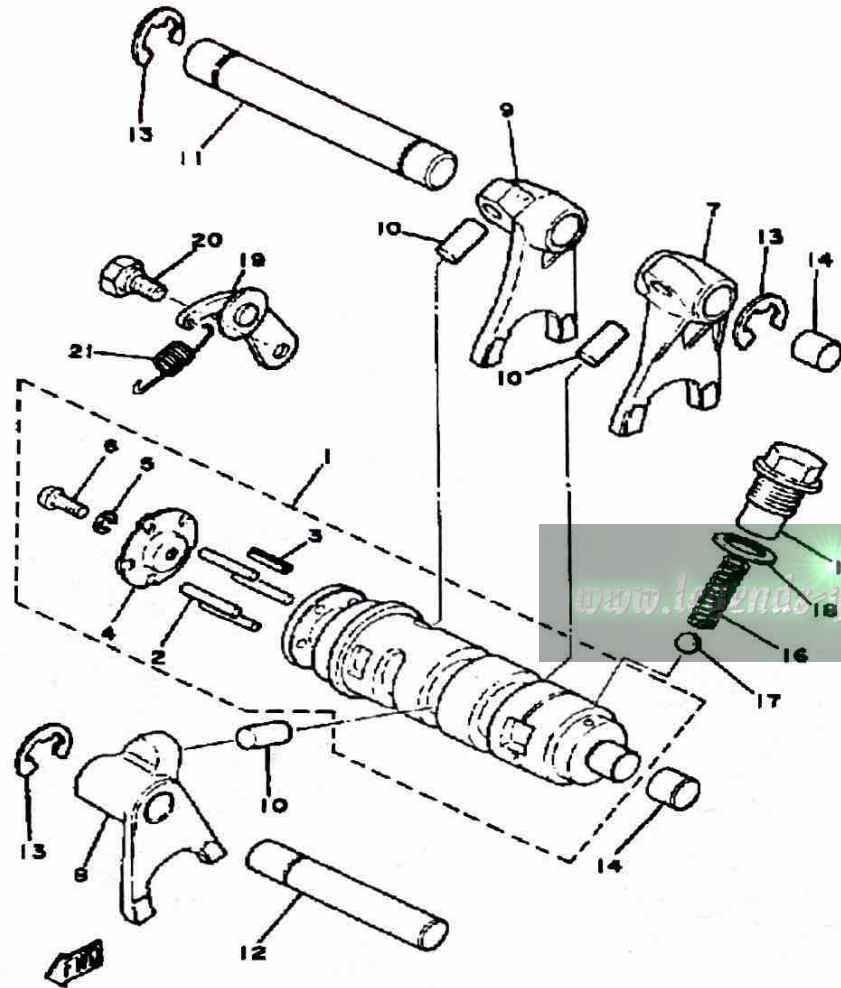
CONTINUED ON NEXT FRAME ►

# TRANSMISSION MX100H - J - K



Ref. No.	Part Number	Description	Qty	Remarks
27	90387-20491-00	COLLAR	1	
28	90179-16018-00	NUT	1	
29	90215-16020-00	WASHER, LOCK	1	
30	98580-06010-00	SCREW, PAN HEAD (92503-06010)	1	
31	92995-06100-00	WASHER, SPRING	1	
32	90338-20023-00	PLUG	1	

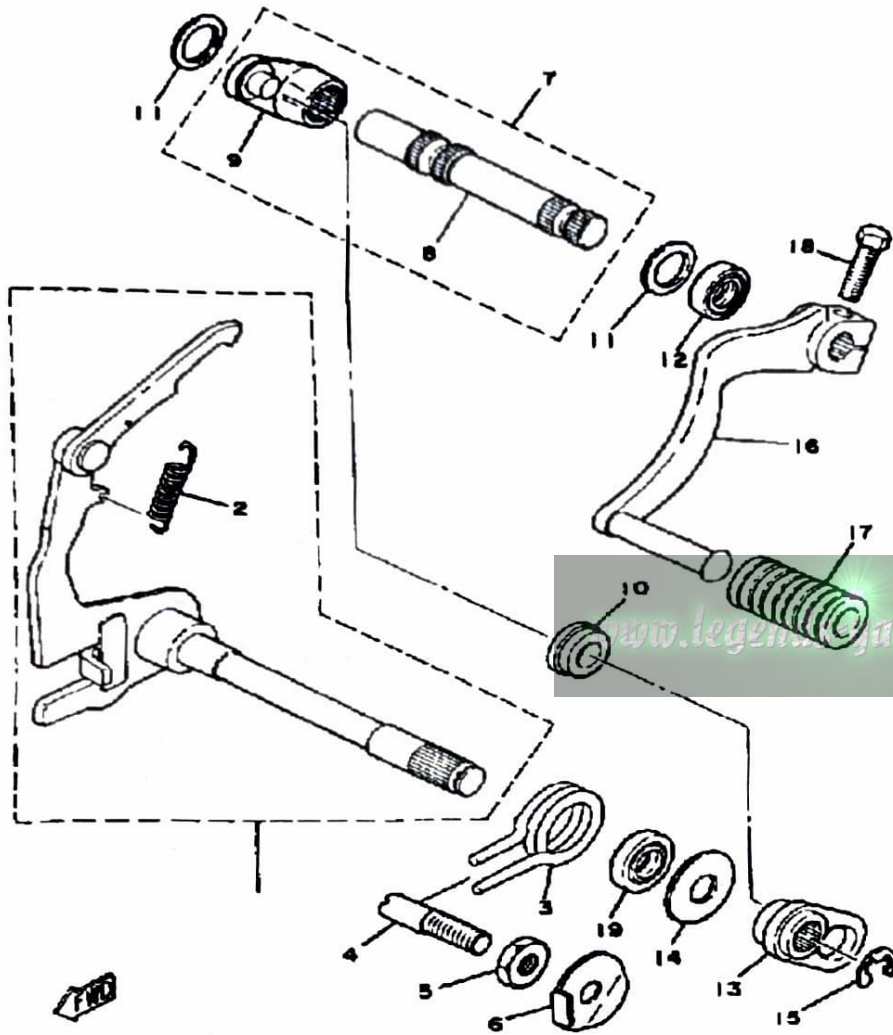
# SHIFT CAM FORK MX100H - J - K



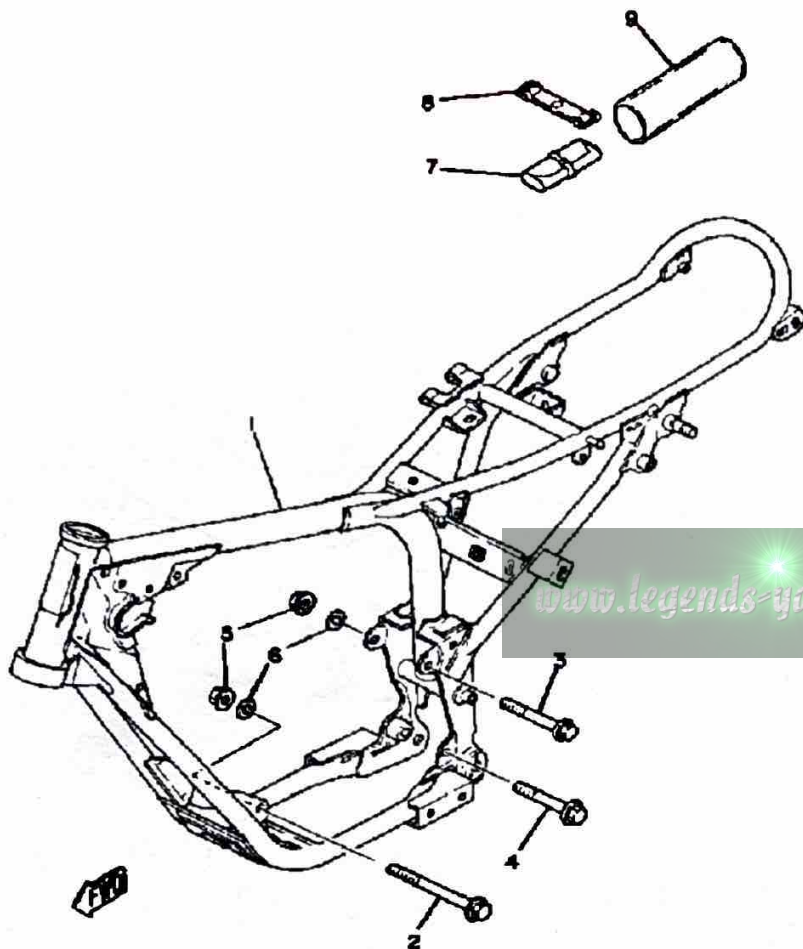
Ref. No.	Part Number	Description	Qty	Remarks
1	401-18540-00-00	SHIFT CAM ASSEMBLY	1	
2	93604-22050-00	. PIN, DOWEL	4	
3	91609-40016-00	. PIN, SPRING	1	
4	164-18561-00-00	. PLATE, SIDE 1	1	
5	92990-05100-00	. WASHER, SPRING	1	
6	98580-05012-00	. SCREW, PAN HEAD	1	
7	463-18511-00-00	FORK, SHIFT 1	1	
8	463-18512-00-00	FORK, SHIFT 2	1	
9	463-18513-00-00	FORK, SHIFT 3	1	
10	90250-08017-00	PIN, STRAIGHT	3	
11	214-18531-00-00	BAR, SHIFT FORK GUIDE 1	1	
12	(248-18531-00-00)	BAR, SHIF FRK GDE 1	1	
13	93430-10017-00	CIRCLIP	3	
14	214-15385-00-00	PLUG, BLIND	2	
15	90109-14385-00	BOLT	1	
16	90501-12083-00	SPRING, COMPRESSION (174-18558-00)	1	
17	93505-16006-00	BALL	1	
18	137-15353-00-00	GASKET, DRAIN	1	
19	132-18140-01-00	STOPPER LEVER ASSEMBLY	1	
20	90109-06001-00	BOLT	1	
21	90506-09112-00	SPRING, TENSION	1	

# SHIFT SHAFT - PEDAL MX100H - J - K

Ref. No.	Part Number	Description	Qty	Remarks
1	558-18101-00-00	SHIFT SHAFT ASSEMBLY	1	
2	90506-09009-00	. SPRING, TENSION	1	
3	90508-32207-00	SPRING, TORSION (132-18124-00)	1	
4	90149-08094-00	SCREW	1	
5	90170-08029-00	NUT	1	
6	90215-08014-00	WASHER, LOCK	1	
7	401-18102-01-00	SHIFT SHAFT ASSEMBLY 2	1	
8	401-18155-02-00	. SHAFT, SHIFT 2	1	
9	401-18151-00-00	. LEVER, SHIFT 3	1	
10	401-18178-00-00	ROLLER, SHIFT LEVER	1	
11	401-18334-00-00	SHIM	2	
12	93109-12012-00	OIL SEAL	1	
13	401-18152-01-00	LEVER, SHIFT 4	1	
14	90201-12575-00	WASHER, PLATE	1	
15	99001-08600-00	CIRCLIP	1	
16	1T9-18111-00-00	PEDAL, SHIFT	1	
17	132-18113-01-00	COVER, SHIFT PEDAL	1	
18	97011-06020-00	BOLT	1	
19	93101-12060-00	OIL SEAL	1	

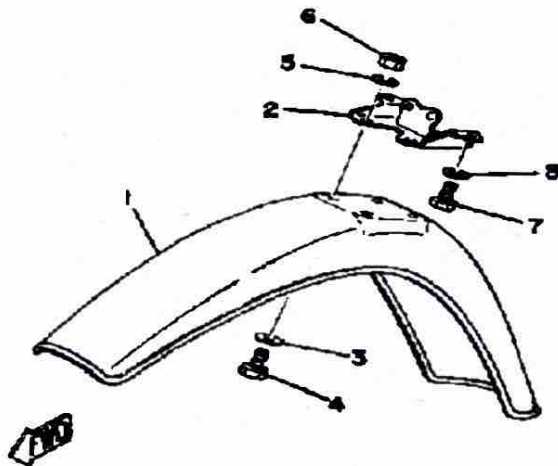
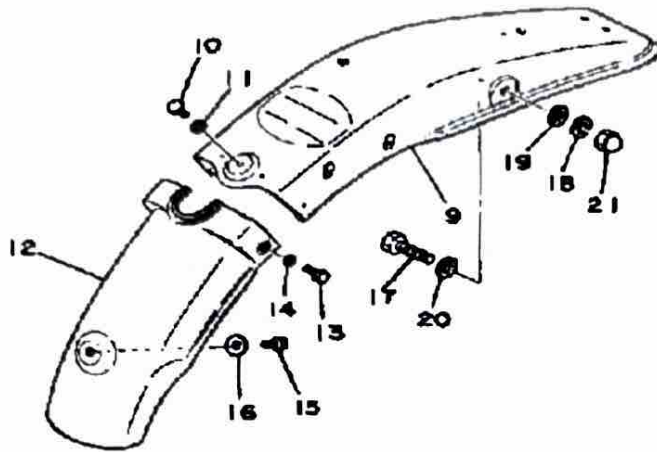


# FRAME - TOOL MX100H - J - K



Ref. No.	Part Number	Description	Qty	Remarks
1	(3T0-21110-00-33)	FRAME .....	1	YAMAHA BLK
2	90105-08094-00	BOLT, WASHER BASED .....	1	
3	90105-08095-00	BOLT, WASHER BASED .....	1	
4	95811-10075-00	BOLT, FLANGE .....	1	
5	95701-08500-00	NUT, FLANGE .....	2	
6	92990-08100-00	WASHER .....	2	
7	353-W2810-00-00	TOOL KIT .....	1	
8	21V-21376-00-00	BAND, TOOL .....	1	
9	(1T9-28171-00-00)	COVER, TOOL BOX .....	1	

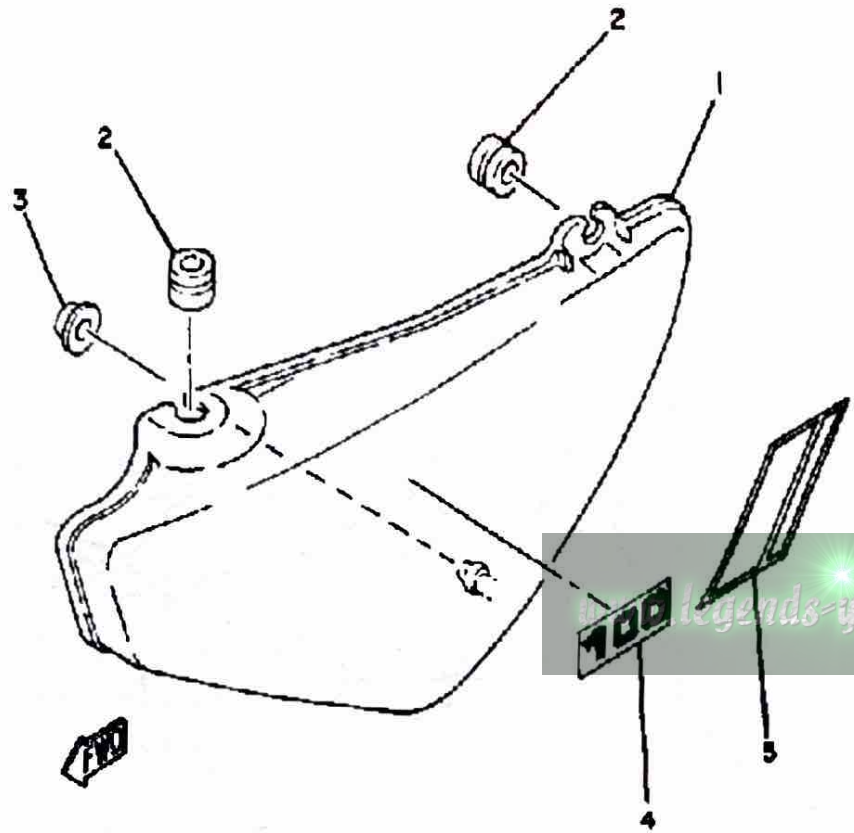
# FRONT FENDER - REAR FENDER MX100F



Ref. No.	Part Number	Description	Qty	Remarks
1	2E7-21511-00-00	FENDER, FRONT .....	1	CLEAN WHITE
	2M5-21511-10-00	FENDER, FRONT .....	1	
2	1T9-21513-00-00	STAY, FENDER 1 .....	1	
3	90201-06067-00	WASHER, PLATE .....	4	
4	97301-06014-00	BOLT, HEXAGON .....	4	
5	92995-06100-00	WASHER, SPRING .....	4	
6	95380-06600-00	NUT .....	4	
7	97011-06010-00	BOLT .....	2	
8	92995-06100-00	WASHER, SPRING .....	2	
9	3M1-21611-00-36	FENDER, REAR .....	1	CLEAN WHITE*SEE NOTE
	3M1-21611-00-E1	FENDER, REAR .....	1	CHAPPY RED
	3M1-21611-10-E1	UNAVAILABLE IN PRICE BOOK	1	CHAPPY REDALT.PRT
10	97301-06014-00	BOLT, HEXAGON .....	1	
11	90201-06067-00	WASHER, PLATE .....	1	
12	1T9-21621-00-00	FLAP .....	1	
13	97013-06012-00	BOLT .....	1	
	97013-06012-00	BOLT .....	2	
14	92901-06600-00	WASHER .....	1	
	92901-06600-00	WASHER .....	2	
15	97013-06012-00	BOLT .....	1	
16	90201-06067-00	WASHER, PLATE .....	1	
17	97313-08040-00	BOLT, HEXAGON (97322-08040)	2	
18	92990-08100-00	WASHER .....	2	
19	92901-08600-00	WASHER .....	2	
20	92901-08600-00	WASHER .....	2	
21	95303-08800-00	NUT (CROWN) (95301-08800)	2	

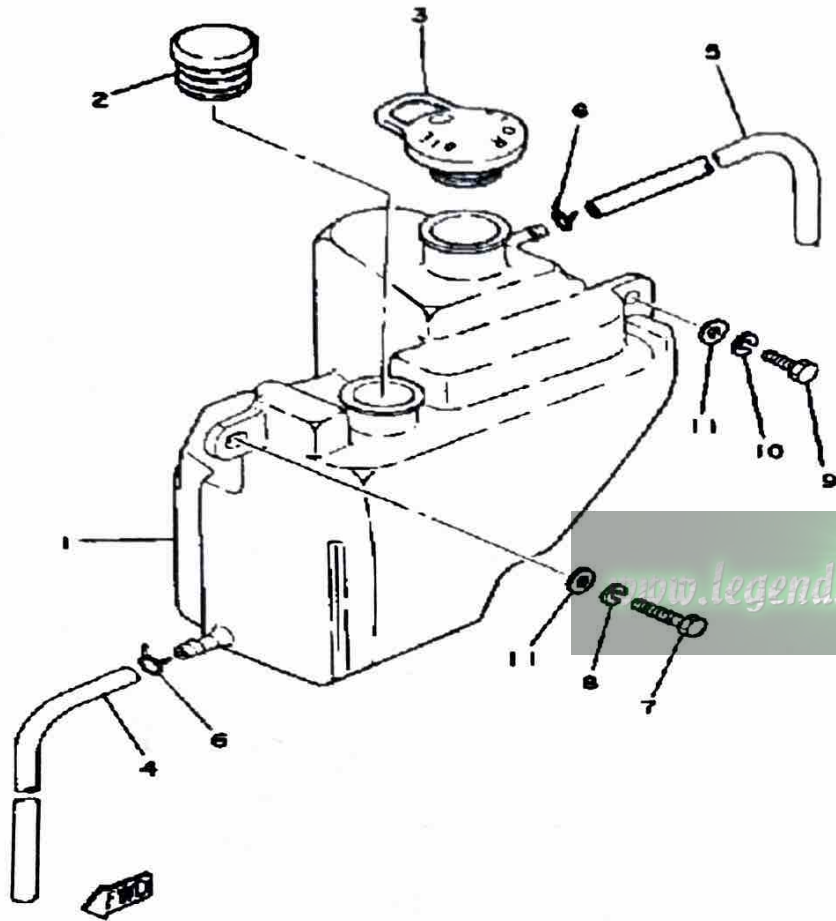
www.legends-yamaha.com

# SIDE COVER MX100H - J - K



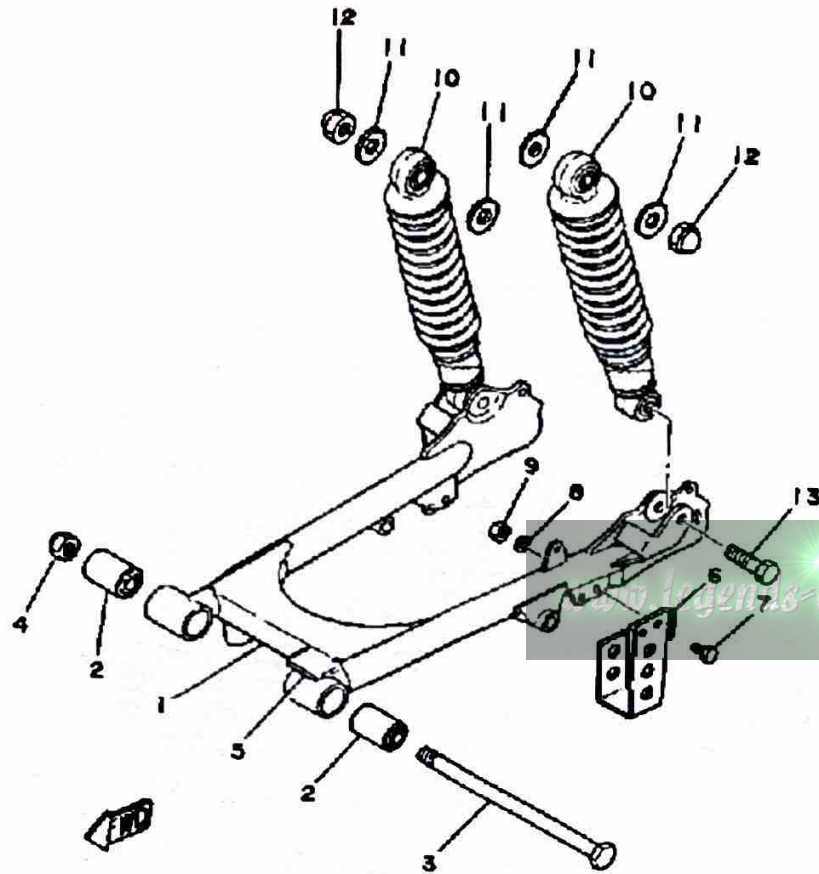
Ref. No.	Part Number	Description	Qty	Remarks
1	2F5-21711-01-00	COVER, SIDE 1 .....	1	CLEAN WHITE
	3T0-21711-00-00	COVER, SIDE 1 .....	1	
2	90480-12053-00	GROMMET .....	2	
3	90480-01401-00	GROMMET .....	1	
4	3T0-21737-00-00	EMBLEM .....	1	
5	3T0-21784-00-00	EMBLEM 4 .....	1	

# OIL TANK MX100H - J - K



Ref. No.	Part Number	Description	Qty	Remarks
1	1T9-21751-00-00	TANK, OIL	1	
2	3M2-21771-00-00	BODY, CAP	1	
3	1T9-21771-00-00	BODY, CAP	1	
4	90445-09252-00	HOSE	1	
5	90445-09111-00	HOSE	1	
6	90467-08003-00	CLIP	2	
7	97011-06025-00	BOLT (97001-06025)	1	
8	92995-06100-00	WASHER, SPRING	1	
9	97313-06016-00	BOLT, HEXAGON	1	
10	92995-06100-00	WASHER, SPRING	1	
11	90201-06067-00	WASHER, PLATE	2	

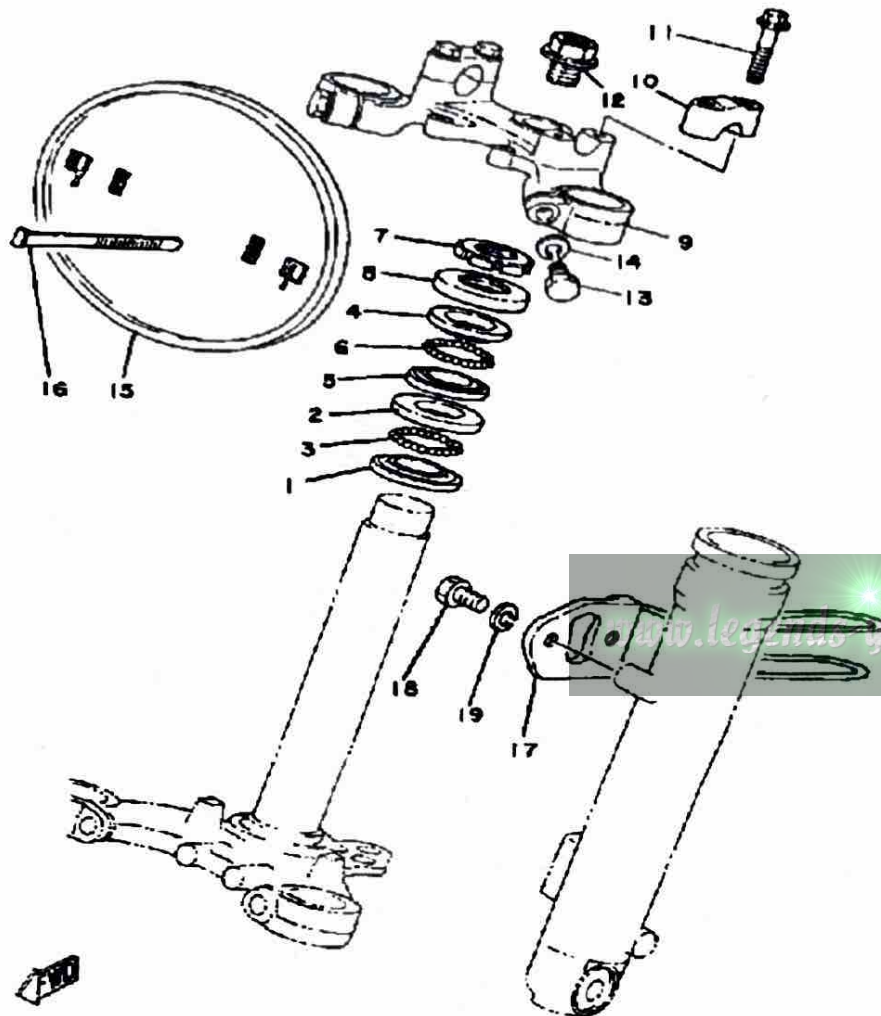
# REAR ARM - SUSPENSION MX100H - J



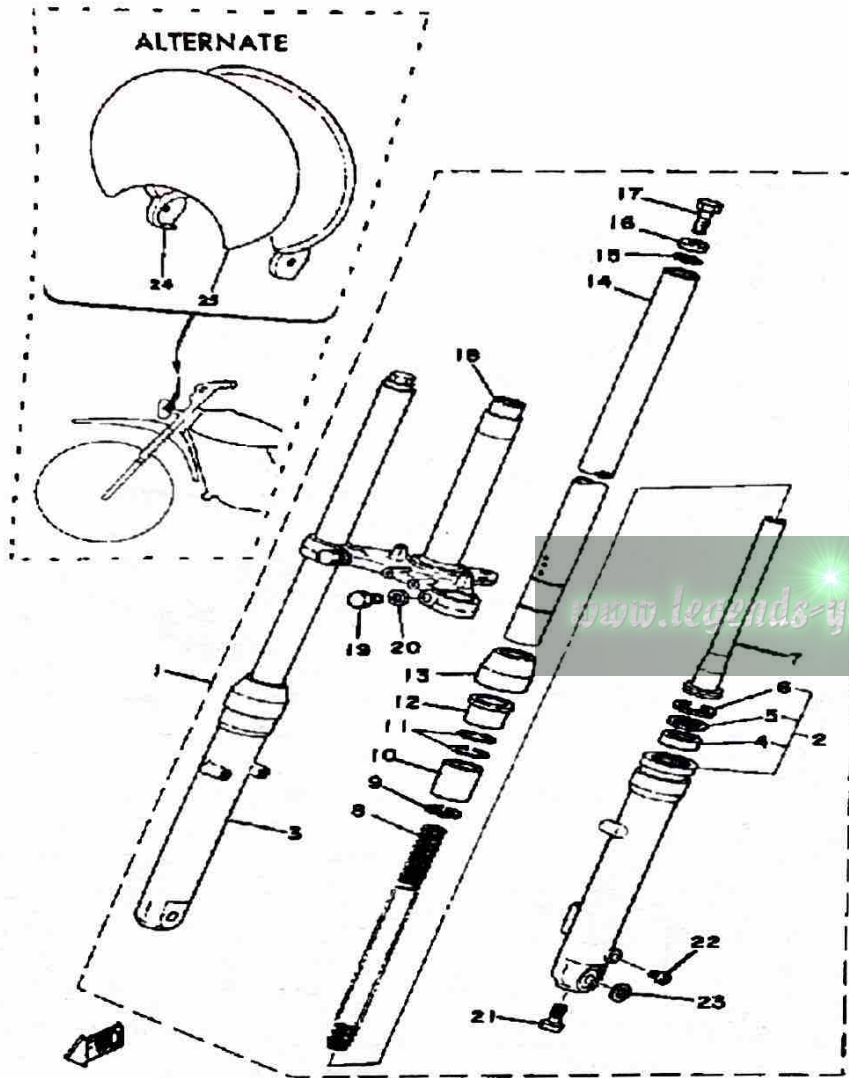
Ref. No.	Part Number	Description	Qty	Remarks
1	1T9-22110-01-33	REAR ARM .....	1	YAMAHA BLK
2	276-22123-00-00	BUSH 1 .....	2	
3	401-22141-00-00	SHAFT, PIVOT .....	1	
4	95712-12300-00	2 .....	1	
5	183-22151-00-00	SEAL, GUARD .....	1	
6	492-22153-00-33	GUARD, CHAIN .....	1	YAMAHA BLK
7	97301-06014-00	BOLT, HEXAGON .....	2	
8	92995-06100-00	WASHER, SPRING .....	2	
9	95380-06600-00	NUT .....	2	
10	1T9-22210-00-33	SHK/ABS ASSEMBLY, REAR .	2	YAMAHA BLK
11	90201-12190-00	WASHER, PLATE .....	4	
12	95303-12800-00	NUT (CROWN) .....	2	
13	90101-10633-00	BOLT, HEXAGON .....	2	

# STEERING MX100H - J - K

Ref. No.	Part Number	Description	Qty	Remarks
1	156-23411-00-00	RACE, BALL 1 .....	1	
2	156-23412-00-00	RACE, BALL 2 .....	1	
3	93501-04011-00	BALL .....	19	
4	22F-23411-01-00	RACE, BALL 1 .....	1	
5	22F-23412-01-00	RACE, BALL 2 .....	1	
6	93503-16010-00	BALL .....	22	
7	90179-25033-00	NUT .....	1	
8	122-23416-00-00	COVER, BALL RACE 2 .....	1	
9	354-23435-00-33	CROWN, HANDLE .....	1	YAMAHA BLK LOW GLOS BLK
10	1E6-23441-00-00	HOLDER, HANDLE UPR .....	2	
11	95811-08035-00	BOLT, FLANGE (95821-08035) .	4	
12	90105-14136-00	BOLT, WASHER BASED .....	1	
13	97313-08030-00	BOLT, HEXAGON .....	2	
14	92903-08100-00	WASHER, SPRING .....	2	
15	3R0-23485-00-00	PLATE, NUMBER .....	1	
16	2X4-23489-00-00	BAND .....	2	
17	1T9-23318-00-00	HOLDER, CABLE 1 .....	1	
18	97013-06012-00	BOLT .....	2	
19	92995-06100-00	WASHER, SPRING .....	2	



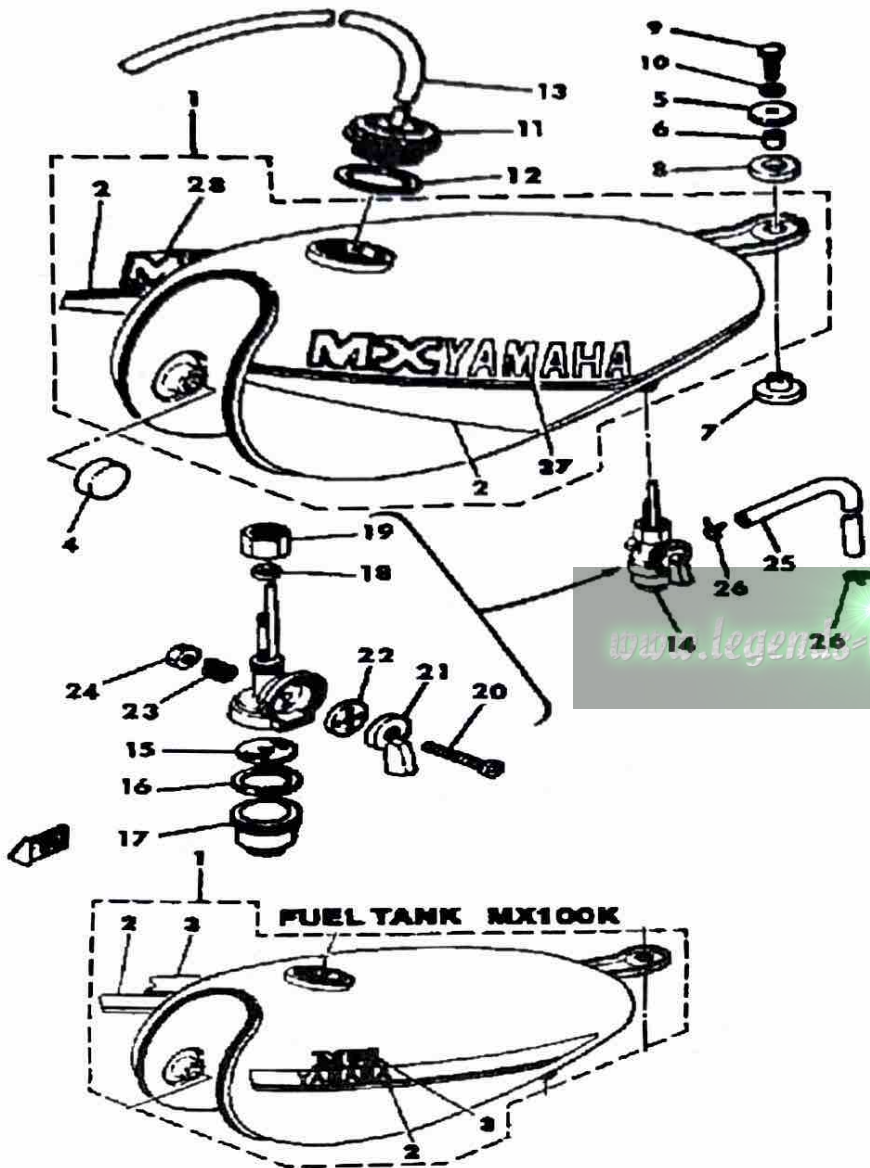
# FRONT FORK MX100H - J - K



Ref. No.	Part Number	Description	Qty	Remarks
1	(1T9-23101-00-00)	FRONT FORK ASSEMBLY	1	
2	1T9-23126-00-35	. TUBE, OUTER (LEFT)	1	SILVER
3	(462-23136-02-35)	TUBE, OUTER 2	1	SILVER
4	462-23145-02-00	.. OIL SEAL	2	
5	462-23146-02-00	.. WASHER, OIL SEAL	2	
6	462-23156-02-00	.. CLIP, OIL SEAL	2	
7	462-23170-02-00	. CYLINDER COMP., FRONT FORK	2	
8	1T9-23141-00-00	. SPRING, FRONT FORK	2	
9	462-23183-02-00	. CIRCLIP	2	
10	462-23171-02-00	. PISTON, FRONT FORK	2	
11	462-23157-02-00	. RING, PISTON	4	
12	462-23125-02-00	. METAL, SLIDE 1	2	
13	462-23144-02-00	. SEAL, DUST	2	
14	1T9-23124-00-00	. TUBE, INNER 1	2	
15	462-23114-02-00	. GASKET	2	
16	276-23112-50-00	. WASHER, CAP	2	
17	205-23111-40-00	. BOLT, CAP	2	
18	1T9-23340-00-90	. UNDER BRACKET COMP.	1	UNI CHROME (BLACK)
19	97013-10030-00	. BOLT (8J7) (97303-10030)	2	
20	92990-10100-00	. WASHER, SPRING	2	
21	98580-06025-00	. SCREW, PAN HEAD	2	
22	451-23119-01-00	. PLUG, DRAIN	2	
23	462-23392-02-00	. WASHER, SPECIAL	2	
24	1W2-23485-00-00	PLATE, NUMBER	1	ALT. PRT
25	1W2-23395-00-00	EMBLEM	1	ALT. PRT

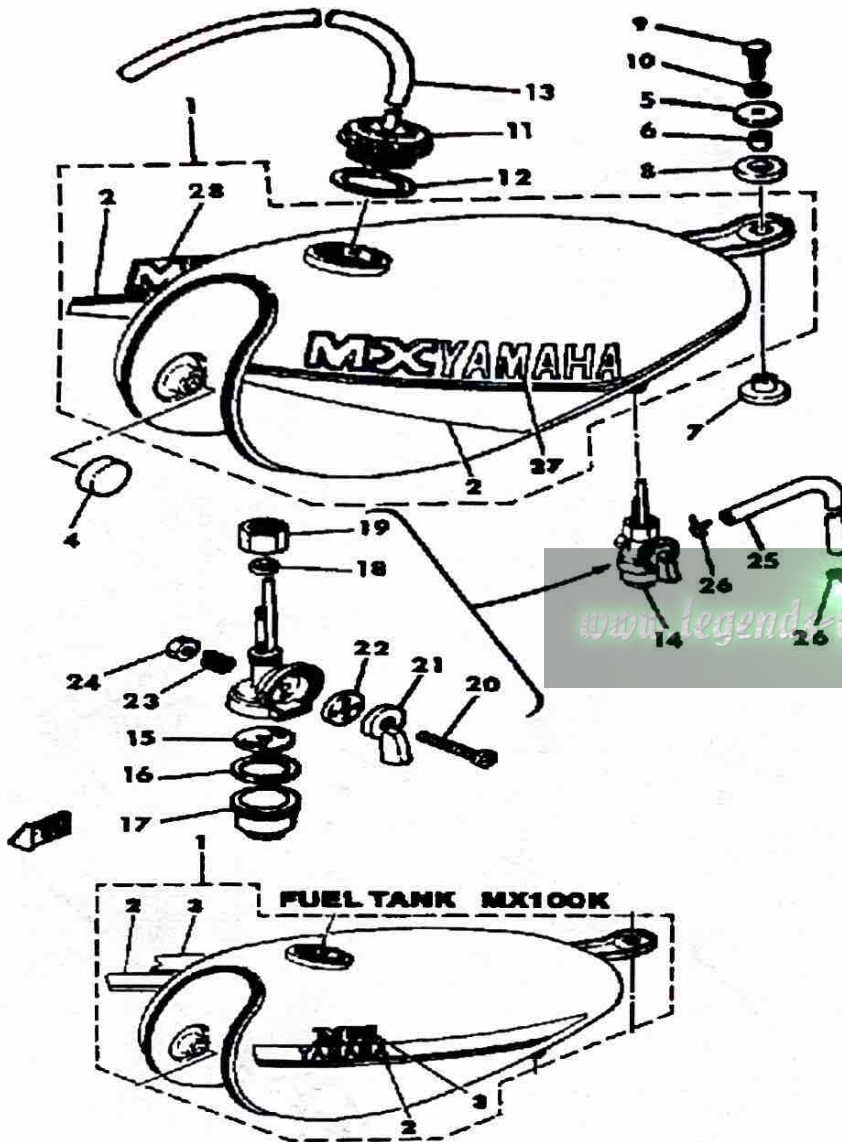
# FUEL TANK MX100H - J - K

Ref. No.	Part Number	Description	Qty	Remarks
1	538-24110-Y0-02	FUEL TANK	1	CLEAN WHITE
	538-24110-Y0-05	FUEL TANK	1	CHAPPY RED
2	3T0-24240-00-00	. GRAPHIC SET	1	
	3T0-24240-10-00	. GRAPHIC SET	1	
3	3T0-24240-00-00	. GRAPHIC SET	2	
4	122-24181-00-00	DAMPER, LOCATING 1	2	
5	90201-06074-00	WASHER, PLATE	1	
6	90387-07390-00	COLLAR	1	
7	90480-14088-00	GROMMET	1	
8	90202-14077-00	WASHER, PLATE	1	
9	97011-06025-00	BOLT (97001-06025)	1	
10	92995-06100-00	WASHER, SPRING	1	
11	322-24611-02-00	BODY, CAP	1	
12	90430-35122-00	GASKET	1	
13	90445-09282-00	HOSE	1	
14	367-24500-04-00	FUEL COCK ASSEMBLY 1 (5U7-24500-00)	1	
15	355-24515-00-00	. NET, FILTER 2	1	
16	102-24522-01-00	. GASKET	1	
17	122-24521-00-00	. CUP, FILTER	1	
18	122-24532-00-00	. GASKET	1	
19	603-24531-01-00	. NUT	1	
20	98501-05030-00	. SCREW, PAN HEAD	1	
21	(355-24524-01-00)	LEVER, COCK	1	
22	355-24523-00-00	. VALVE	1	
23	(355-24518-00-00)	WASHER, WAVE	1	
24	95380-05600-00	. NUT	1	
25	90445-09066-00	HOSE	1	
26	90467-08003-00	CLIP	2	



CONTINUED ON NEXT FRAME ►

# FUEL TANK MX100H - J - K

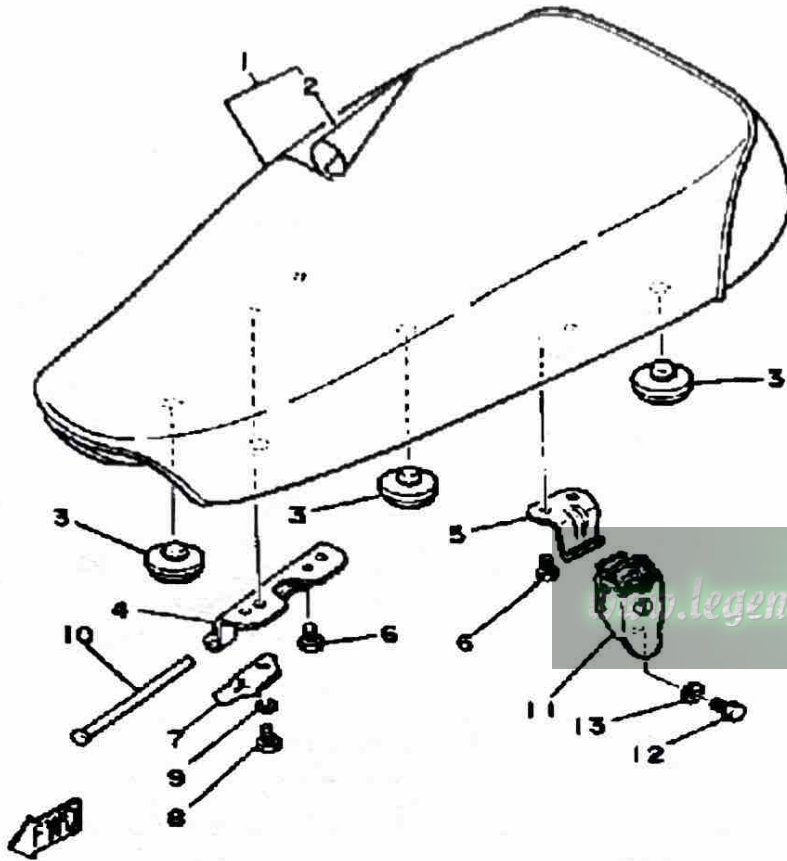


Ref. No.	Part Number	Description	Qty	Remarks
27	3M2-24240-10-00	GRAPHIC SET .....	1	
28	3M2-24240-10-00	GRAPHIC SET .....	1	

[www.legend-yamaha-enduros.com](http://www.legend-yamaha-enduros.com)

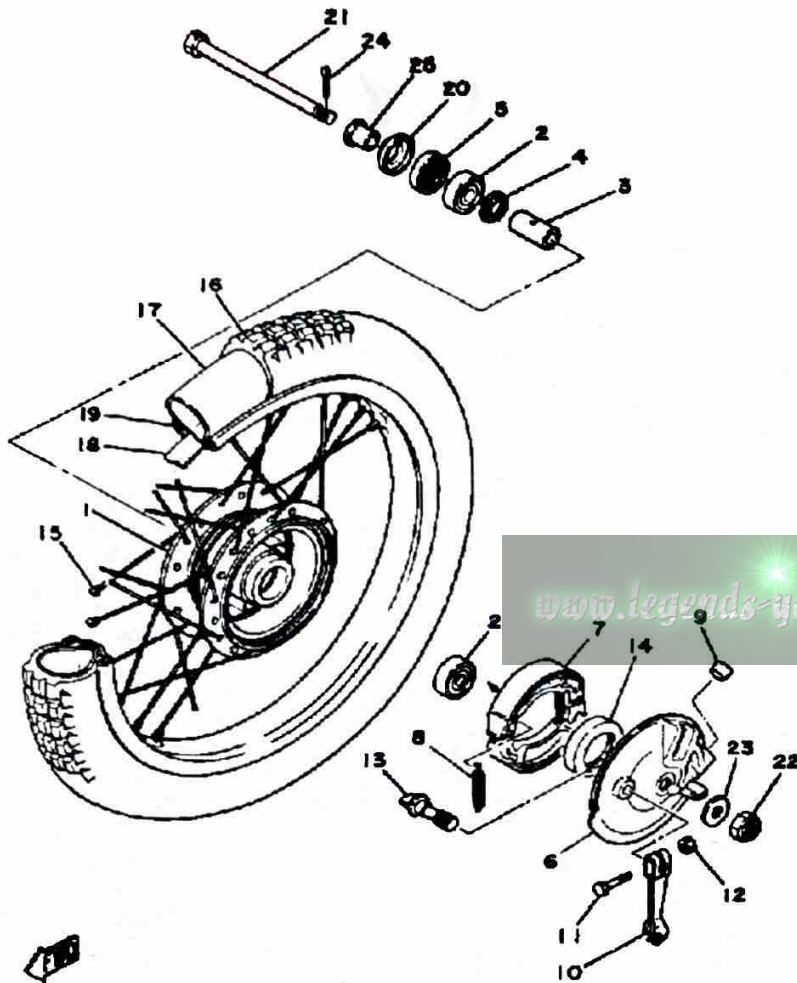
# SEAT MX100H - J - K

Ref. No.	Part Number	Description	Qty	Remarks
1	1T9-W2471-01-00	SINGLE SEAT ASSEMBLY	1	
2	1T9-24711-00-00	. COVER, SINGLE SEAT	1	
3	1L9-24741-00-00	PAD, SEAT	5	
4	538-24726-00-00	HINGE, SEAT	1	
5	278-24728-00-00	BRACKET, SEAT	1	
6	90101-06304-00	BOLT	3	
7	1T9-24768-00-00	STOPPER	1	
8	97013-06012-00	BOLT	1	
9	92995-06100-00	WASHER, SPRING	1	
10	1K8-24774-00-00	PIN	1	
11	214-24708-00-00	SEAT LEVER ASSEMBLY	1	
12	97013-06012-00	BOLT	1	
13	92901-06600-00	WASHER	1	



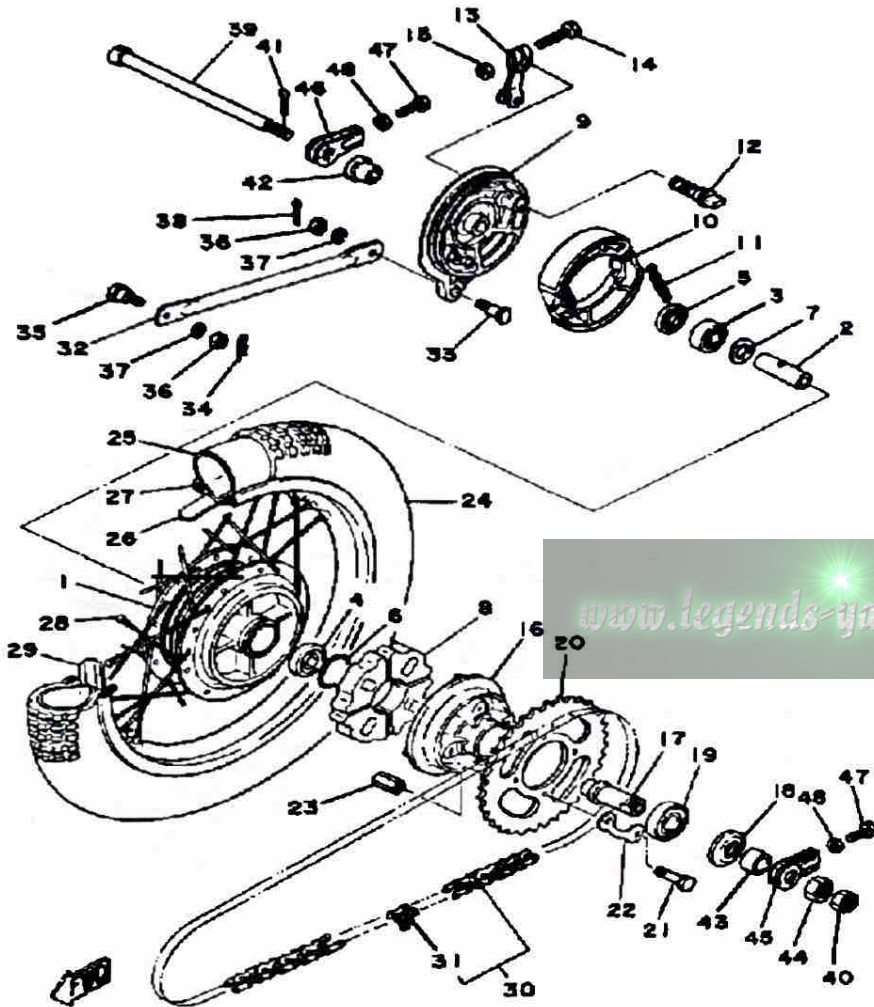
[www.legends-yamaha-enduros.com](http://www.legends-yamaha-enduros.com)

# FRONT WHEEL MX100H - J - K



Ref. No.	Part Number	Description	Qty	Remarks
1	248-25111-00-98	HUB, FRONT	1	LOW GLOS BLK
2	93306-30103-00	BEARING (B6301Z)	2	
3	90560-12261-00	SPACER	1	
4	109-25315-00-00	FLANGE, SPACER	1	
5	93102-18008-00	OIL SEAL	1	
6	3M1-25121-00-98	PLATE, BRAKE SHOE	1	LOW GLOS BLK
7	10X-W2536-00-00	BRAKESHOE SET-2PCS	2	
	5H0-W2536-00-00	BRAKESHOE SET-2PCS	2	
8	90506-15260-00	SPRING, TENSION	2	
	90506-16150-00	SPRING, TENSION (102-25333-00)	2	
9	90338-18014-00	PLUG	1	
10	5H0-25155-00-00	LEVER, CAMSHAFT 1	1	
11	90101-06278-00	BOLT	1	
12	95380-06600-00	NUT	1	
13	3Y6-25351-00-00	CAMSHAFT	1	
14	93105-47007-00	OIL SEAL	1	
15	276-25104-40-00	SPOKE SET, FRONT	1	
16	(94125-18570-00)	CS 250X18 C-755 1	1	
17	94225-18194-00	TUBE (2.50-18)	1	
18	94325-18059-00	BAND, RIM	1	
19	94414-18007-00	RIM (1.40X18)	1	
20	481-25118-01-00	COVER, HUB DUST	1	
21	90102-12015-00	BOLT, WITH HOLE	1	
22	95301-12900-00	NUT, SLOTTED	1	
23	90201-122A7-00	WASHER, PLATE	1	
24	91401-30030-00	PIN, COTTER	1	
25	90387-12616-00	COLLAR	1	

# REAR WHEEL MX100H - J - K

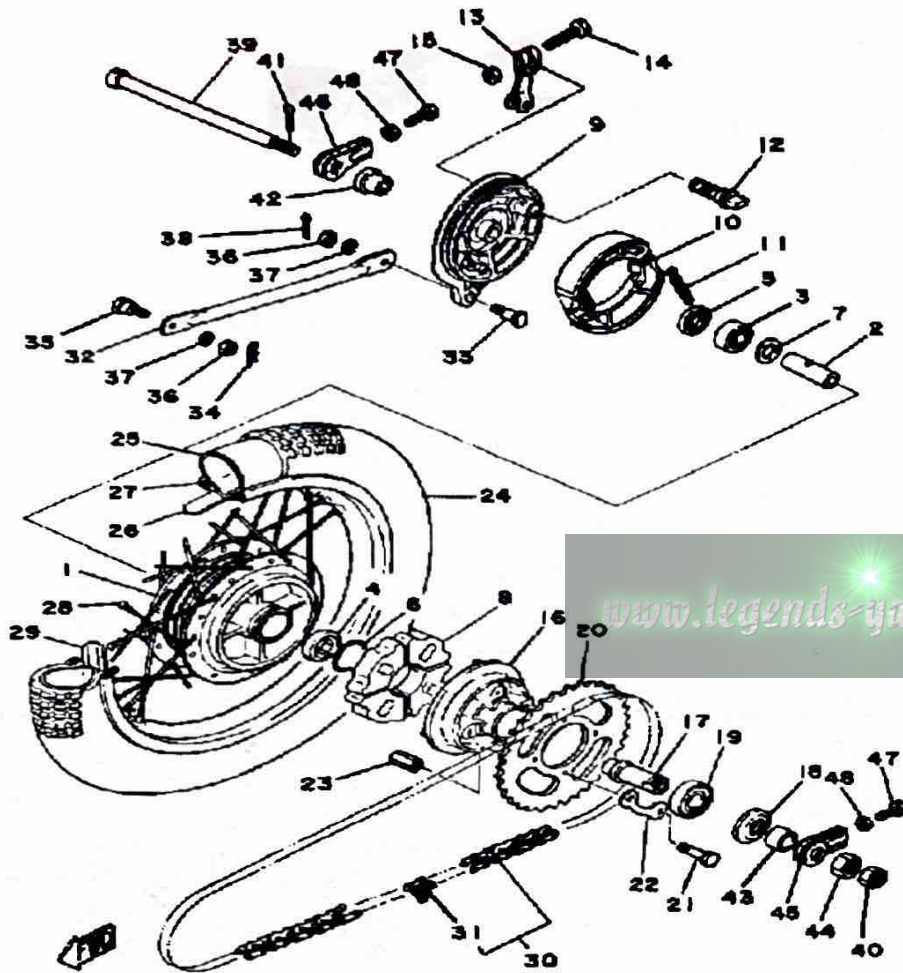


Ref. No.	Part Number	Description	Qty	Remarks
1	99999-02213-00	HUB, REAR	1	LOW GLOS BLK
2	90560-12145-00	SPACER	1	
3	93306-30103-00	BEARING (B6301Z)	1	
4	93306-30101-00	BEARING (B6301)	1	
5	93104-21016-00	OIL SEAL, SO-TYPE	1	
6	93210-41041-00	O-RING	1	
7	109-25315-00-00	FLANGE, SPACER	1	
8	304-25364-01-00	DAMPER	4	
9	1M3-25321-02-98	PLATE, BRAKE SHOE	1	LOW GLOS BLK
	1M3-25321-02-98	PLATE, BRAKE SHOE	1	
10	10X-W2536-00-00	BRAKESHOE SET-2PCS	2	
	5H0-W2536-00-00	BRAKESHOE SET-2PCS	2	
11	90506-15260-00	SPRING, TENSION	2	
	90506-16150-00	SPRING, TENSION (102-25333-00)	2	
12	3Y6-25351-00-00	CAMSHAFT	1	
13	1T9-25355-00-00	LEVER, CAMSHAFT	1	
14	90101-06278-00	BOLT	1	
15	95380-06600-00	NUT	1	
16	296-25366-01-98	CLUTCH, HUB	1	LOW GLOS BLK
17	167-25387-00-00	AXLE, SPROCKET	1	
18	93106-30004-00	OIL SEAL	1	
19	93306-00406-00	BEARING (B6004Z)	1	
20	13M-25449-20-00	SPROCKET, DRVN 49T	1	U.R. ALT. PRTYAMAHA BLK
	2U2-25448-10-00	SPROCKET, DRIVEN (48T)	1	U.R. STDYAMAHA BLK
	4U5-25447-10-00	SPROCKET, DRVN47T (1T9-25446-10-33)	1	U.R. ALT. PRTYAMAHA BLK

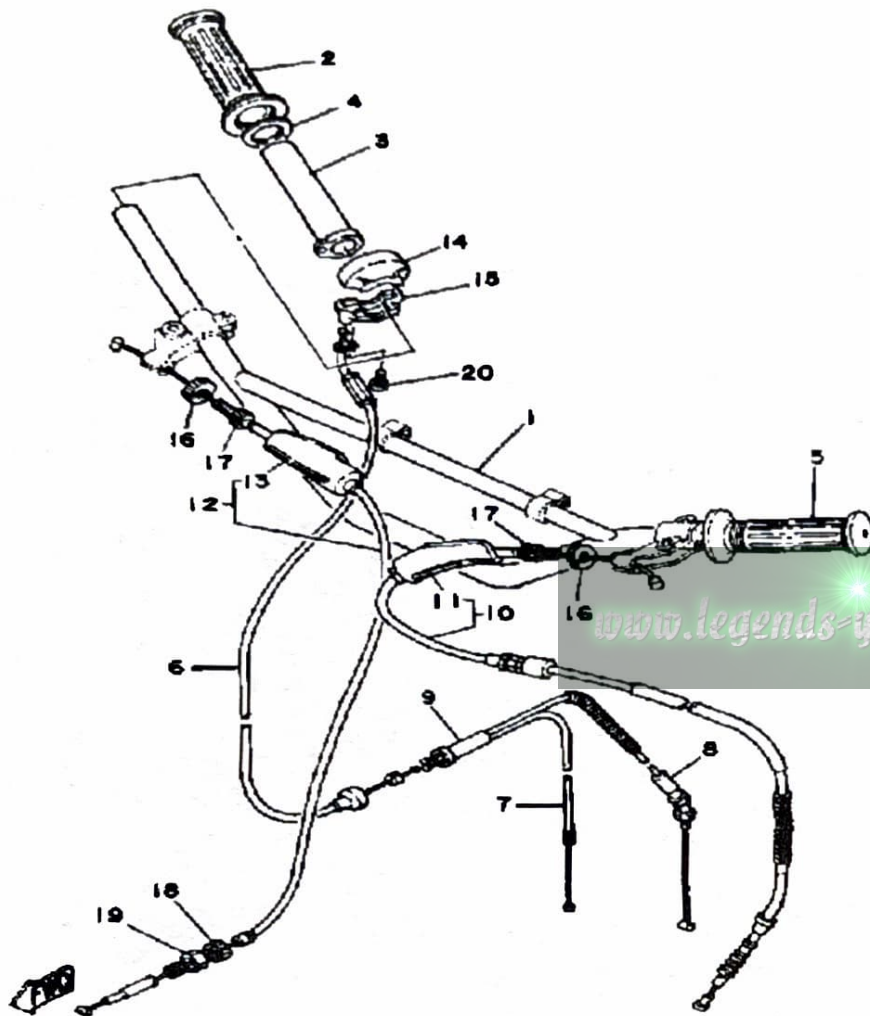
CONTINUED ON NEXT FRAME ►

# REAR WHEEL MX100H - J - K

Ref. No.	Part Number	Description	Qty	Remarks
21	90101-08672-00	BOLT	4	
22	102-25412-00-00	WASHER	2	
23	90179-08639-00	NUT, SPEC"L SHAPE (30)	4	
24	94130-16368-00	TIRE (3.00-16)	1	
25	94230-16075-00	TUBE (3.00-16)	1	
26	94330-16058-00	BAND, RIM (3.00-16)	1	
27	94416-16224-00	RIM (1.60-16)	1	
28	538-25304-10-00	SPOKE SET, REAR	1	
29	5X2-25394-00-00	SPACER, BEAD	1	
30	94500-03104-00	CHAIN DRIVE (RS420-104L)	1	
31	94600-03001-00	JOINT, CHAIN	1	
32	1T9-25371-00-00	BAR, TENSION	1	
33	90109-08183-00	BOLT	1	
34	90468-10050-00	CLIP	1	
35	90109-08368-00	BOLT	1	
36	95303-08700-00	NUT	2	
37	92990-08100-00	WASHER	2	
38	91490-20020-00	PIN, COTTER	1	
39	390-25381-01-00	AXLE, WHEEL	1	
40	90171-10004-00	NUT, CASTLE	1	
41	91490-20020-00	PIN, COTTER	1	
42	90387-12102-00	COLLAR	1	
43	90387-18144-00	COLLAR	1	
44	90170-18165-00	NUT	1	
45	241-25388-00-00	PULLER, CHAIN 1	1	
46	241-25389-10-00	PULLER, CHAIN 2	1	
47	90101-06016-00	BOLT	2	
48	95380-06600-00	NUT	2	

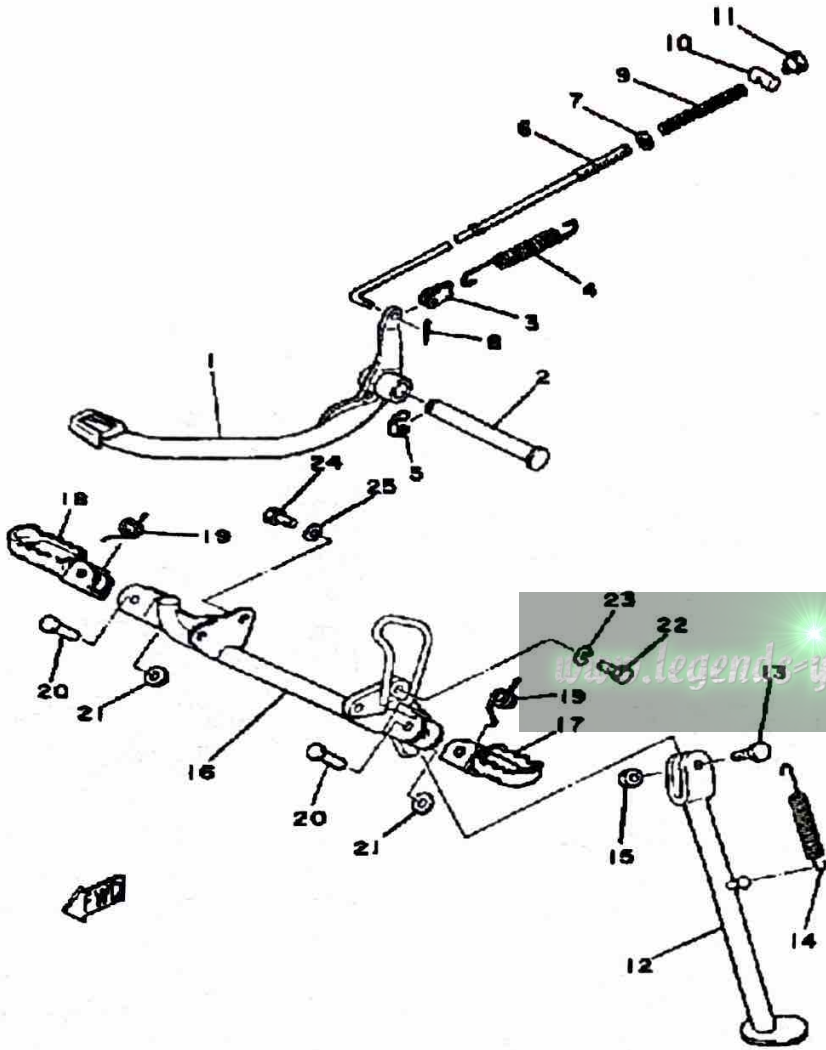


# HANDLEBAR - CABLE MX100H - J - K



Ref. No.	Part Number	Description	Qty	Remarks
1	3M1-26111-01-00	HANDLEBAR .....	1	
2	2N3-26242-00-00	GRIP RH (R.H) .....	1	
3	1V1-26243-00-00	TUBE, THRTL GUIDE .....	1	
4	90201-261L1-00	WASHER, PLATE (1V1-26249-00) .....	1	
5	2N3-26241-00-00	GRIP (LEFT) .....	1	
6	3M1-26311-00-00	CABLE, THROTTLE 1 .....	1	
7	1T9-26312-10-00	CABLE, THROTTLE 2 .....	1	
8	1T9-26321-10-00	CABLE, PUMP .....	1	
9	214-26261-00-00	CONNECTOR, CABLE .....	1	
10	3M1-26335-00-00	CABLE, CLUTCH .....	1	
11	382-26372-01-00	. COVER, HANDLE LEVER ...	1	
12	3M1-26341-00-00	CABLE, BRAKE .....	1	
13	498-26372-00-00	. COVER, HANDLE LEVER 1 ..	1	
14	1V1-26281-00-00	CAP, GRIP UPPER .....	1	
15	1V1-26282-00-00	CAP, GRIP LOWER .....	1	
16	90179-08316-00-00	NUT .....	2	
17	90123-06010-00	BOLT .....	2	
18	90123-06010-00	BOLT .....	1	
19	90179-06143-00	NUT, SPEC"L SHAPE .....	1	
20	98580-05016-00	SCREW, PAN HEAD .....	2	

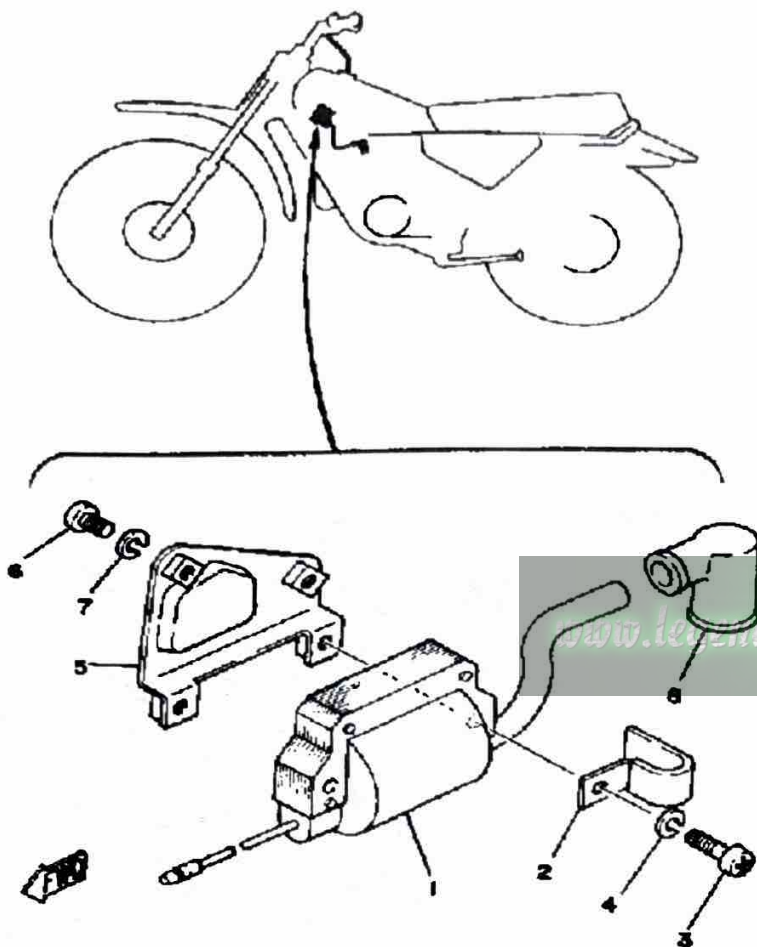
# STAND - FOOTREST MX100H - J - K



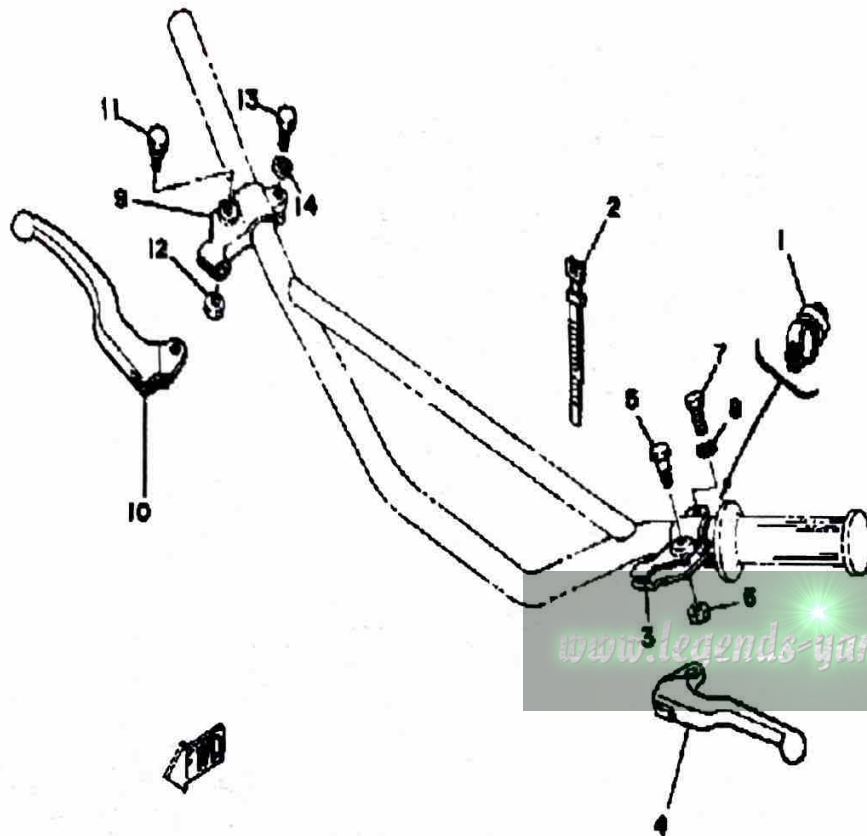
Ref. No.	Part Number	Description	Qty	Remarks
1	538-27211-00-R4	PEDAL, BRAKE	1	BLACK
2	2A3-27212-00-00	SHAFT, BRAKE PEDAL	1	
3	1T9-27254-00-00	HOOK	1	
4	90506-20157-00	SPRING, TENSION	1	
5	93430-12008-00	CIRCLIP	1	
6	1T9-27231-00-00	ROD, BRAKE	1	
7	92990-06200-00	WASHER	1	
8	91490-20020-00	PIN, COTTER	1	
9	90501-10245-00	SPRING, COMPRESSION	1	
10	90249-12008-00	PIN	1	
11	90179-06411-00	NUT	1	
12	367-27311-02-R4	STAND, SIDE	1	BLACK
13	90109-08031-00	BOLT	1	
14	90506-29052-00	SPRING, TENSION	1	
15	95303-08700-00	NUT	1	
16	1T9-27451-02-R4	FOOTREST	1	BLACK
17	22W-27411-01-90	FOOTREST 1	1	UNI CHROME (BLACK)
18	22W-27421-01-90	FOOTREST 2	1	
	22W-27421-01-90	FOOTREST 2	1	UNI CHROME (BLACK)
19	90508-20023-00	SPRING, TORSION	2	
20	90243-08006-00	PIN	2	
21	90201-06042-00	WASHER, PLATE	2	
22	97313-08020-00	BOLT, HEXAGON	2	
23	92990-08100-00	WASHER	2	
24	97313-08016-00	BOLT, HEXAGON	2	
25	92990-08100-00	WASHER	2	

# ELECTRICAL - 1 MX100H - J - K

Ref. No.	Part Number	Description	Qty	Remarks
1	5G4-82310-40-00	IGNITION COIL ASSEMBLY (J17-82310-21)	1	
2	90462-05005-00	CLAMP	1	
3	98511-06025-00	SCREW PAN HEAD (92501-06025)	2	
4	92995-06100-00	WASHER, SPRING	2	
5	336-82316-01-00	BRACKET, IGNITION COIL	1	
6	98580-06012-00	SCREW, PAN HEAD	2	
7	92995-06100-00	WASHER, SPRING	2	
8	81E-82370-20-00	PLUG CAP ASSEMBLY	1	



# HANDLE SWITCH - LEVER MX100H - J -

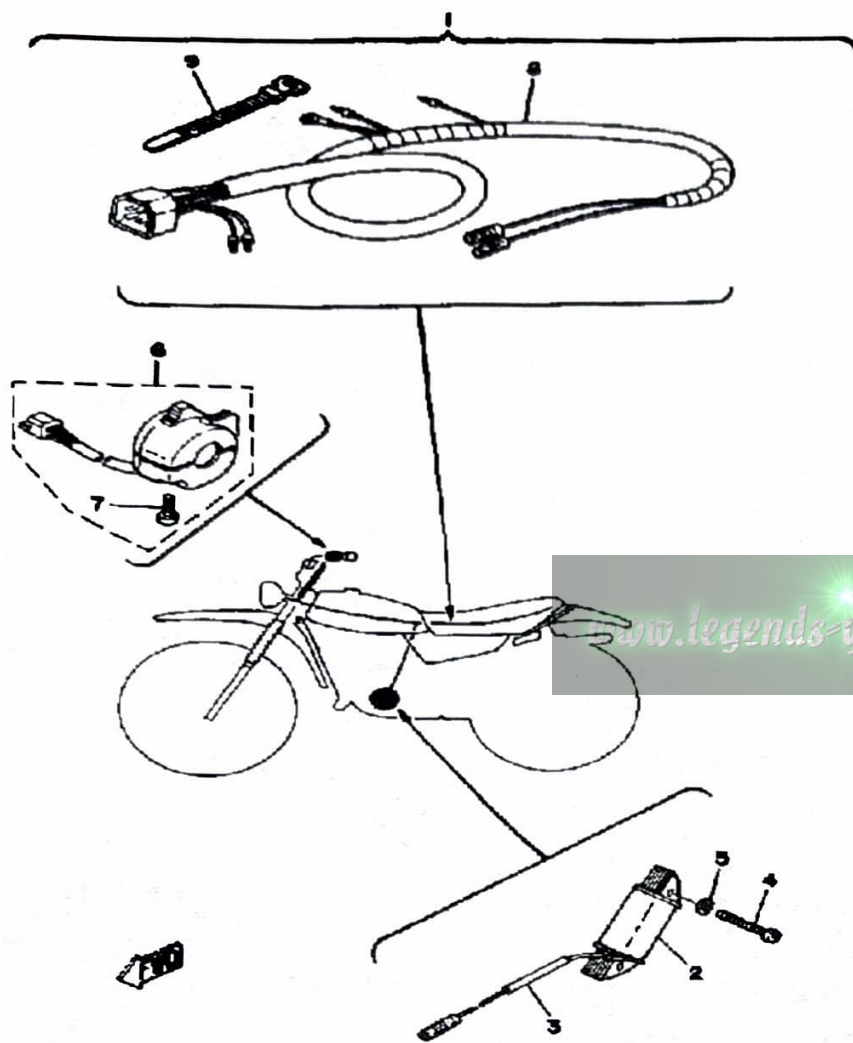


Ref. No.	Part Number	Description	Qty	Remarks
1	3M1-83976-00-00	SWITCH, HANDLE 1 .....	1	
2	437-83936-01-00	BAND, SWITCH CORD .....	2	
3	214-82911-01-00	HOLDER, LEVER 1 .....	1	
4	23X-83912-00-00	LEVER 1 .....	1	
5	90109-06797-00	BOLT .....	1	
6	95601-06100-00	NUT, U .....	1	
7	97003-06022-00	BOLT, HEXAGON (97301-06022) .....	1	
8	92995-06100-00	WASHER, SPRING .....	1	
9	233-82921-31-00	HOLDER, LEVER 2 .....	1	
10	23X-83922-00-00	LEVER 2 .....	1	
11	90109-06797-00	BOLT .....	1	
12	95601-06100-00	NUT, U .....	1	
13	97003-06022-00	BOLT, HEXAGON (97301-06022) .....	1	
14	92995-06100-00	WASHER, SPRING .....	1	

[www.legends-yamaha-enduros.com](http://www.legends-yamaha-enduros.com)

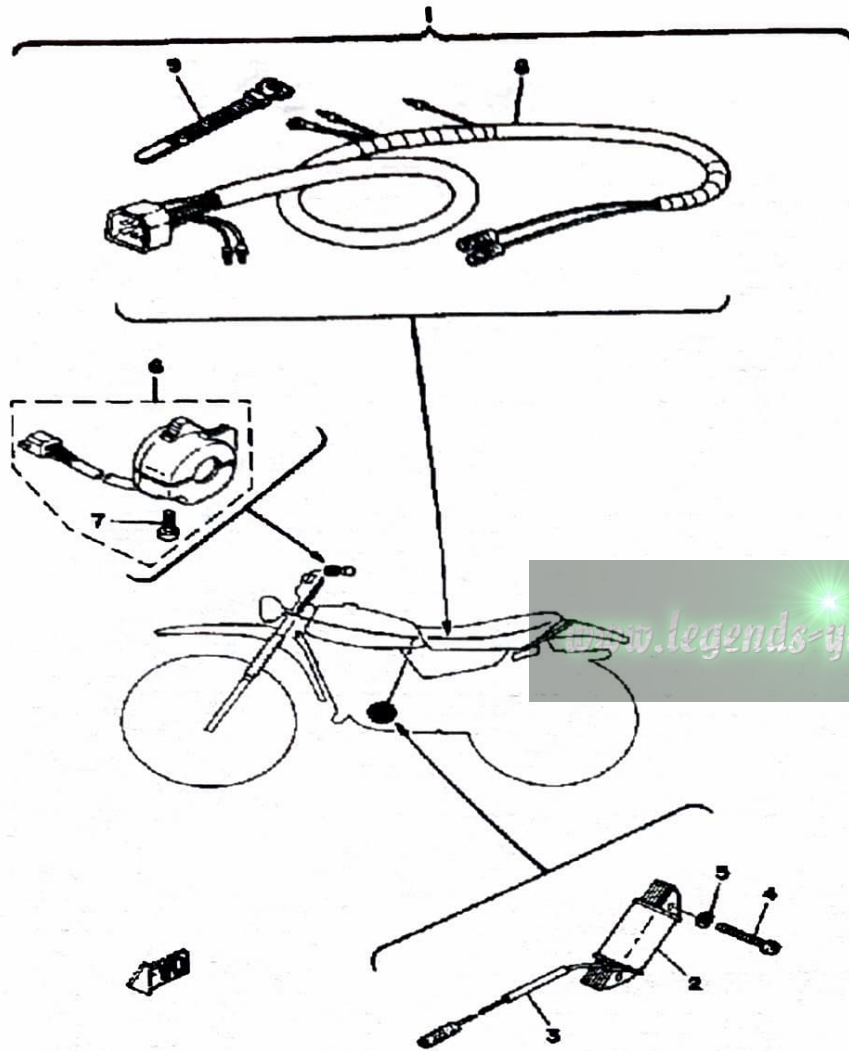
# LIGHTING KIT (TAILLIGHT) MX100H - J .

Ref. No.	Part Number	Description	Qty	Remarks
1	(ACC-01100-60-00)	MX100 LIGHTING KIT	1	
2	(3M2-85513-20-00)	COIL, LIGHTING 1	1	
3	(3M2-85515-21-00)	LEAD WIRE ASSEMBLY	1	
4	98511-04030-00	.. SCREW, PAN HEAD	2	
5	92901-04100-00	.. WASHER, SPRING	2	
6	1W2-83973-00-98	. SWITCH, HANDLE 3	1	
7	90157-05027-00	.. SCREW, PAN HEAD	2	
	98580-05020-00	.. SCREW, PAN HEAD	2	
8	(3T0-82590-90-00)	WIRE HARNESS ASSEMBLY	1	
9	437-83936-01-00	. BAND, SWITCH CORD	2	
10	(1W2-84110-60-00)	UNAVAILABLE IN PRICE BOOK	1	N/A
11	(1W2-84115-60-00)	RIM, HEADLIGHT	1	
12	1W2-84144-60-00	. COVER, HEADLIGHT	1	
13	3R8-84120-60-00	. LENS ASSEMBLY	1	
14	527-84114-09-XX	. BULB, HL 6V25/25W	1	
15	1W2-84112-60-00	. SOCKET	1	
16	1W2-84324-60-00	. SPRING, REFLECTOR	4	
17	1W2-84130-60-00	BODY ASSEMBLY, HEADLIGHT	1	LOW GLOS BLK
18	(1W2-84145-60-00)	COLLAR, BODY FTNG	2	
19	1L9-84338-60-00	. COLLAR, BODY FTNG	2	
20	98580-05016-00	SCREW, PAN HEAD	1	
21	92990-05100-00	WASHER, SPRING	1	
22	1W2-84143-00-00	DAMPER, HDLT STAY	2	
23	92990-08100-00	WASHER	2	
24	95333-08600-00	NUT	2	
25	(3M1-84118-00-00)	STAY, HEADLIGHT 1	1	
26	(3M1-84119-00-00)	STAY, HEADLIGHT 2	1	
27	98580-06020-00	SCREW	2	
28	92995-06100-00	WASHER, SPRING	2	



CONTINUED ON NEXT FRAME ►

# LIGHTING KIT (TAILLIGHT) MX100H - J .



Ref. No.	Part Number	Description	Qty	Remarks
29	92901-06600-00	WASHER .....	2	
30	92901-08600-00	WASHER .....	2	
31	92990-08100-00	WASHER .....	2	
32	95303-08800-00	NUT (CROWN) (95301-08800) .	2	
33	434-84500-64-00	TAILLIGHT ASSEMBLY .....	1	
34	434-84521-69-00	. LENS, TAILLIGHT .....	1	
35	434-84515-61-00	. RIM, TAILLIGHT .....	1	
36	122-84514-30-00	. BULB .....	1	
37	434-84517-61-00	. CORD, TAILLIGHT .....	1	
38	434-84522-62-00	. WASHER .....	2	
39	(434-84524-62-00)	SCREW, LENS FITTING .....	2	
40	434-84519-64-00	. BRACKET, TAILLIGHT .....	1	
41	434-84500-64-00	. TAILLIGHT ASSEMBLY .....	1	
42	(434-84557-60-00)	COLLAR .....	2	
43	90201-05031-00	WASHER, PLATE .....	2	
44	92990-05100-00	WASHER, SPRING .....	2	
45	95380-05600-00	NUT .....	2	
46	(90462-08003-00)	CLAMP .....	1	
47	90480-15058-00	GROMMET .....		
	90480-15058-00	GROMMET .....	1	

## MX100H 1981 SERVICE DATA

<b>MODEL - IBM I.D. NUMBER</b>	MX100H	310
Initial Engine Number / Frame Number	310-060101 / 310-060101	
Basic Color(s)	Clean White	
Fuel Type / Fuel Tank Capacity / Reserve Capacity	Regular / 4.5 Lit. (1.2 Gal.) / 0.3 Lit. (0.08 Gal.)	
Dry Vehicle Weight	77 kg (170 lbs.)	
<b>ENGINE TYPE</b>	2-Stroke, Air-Cooled, Reed Valve	
Bore/Stroke/Number Cylinders/Displacement (cc)	52mm / 45.6mm / 1 / 97cc	
Compression Ratio/Compression Pressure Min~Max	6.7:1 / NA	
Piston Skirt Clearance New / Max	0.035 ~ 0.040mm / 0.1mm	
Ring End Gap Top / 2nd / 3rd	0.3 ~ 0.5mm / 0.3 ~ 0.5mm / Ø	
Valve Clearance (Cold) Intake / Exhaust	Ø	
Oil Pressure Hot / rpm	Ø	
Oiling System	Autolube	
Capacity: Dry	1.0 Lit. (1.0 Qt.)	
Oil and Filter Change	Ø	
Oil Change	Ø	
Lubricant: Temp. Above 5°C (40°F)	Yamalube 2* or Equivalent	
Temp. Below 15°C (60°F)	Yamalube 2* or Equivalent	
<b>AUTOLUBE - Min Stroke / Color Code</b>	0.20 ~ 0.25mm / Green	
Minimum Output @ 200 Cycles	0.50cc ~ 0.62cc	
Maximum Output @ 200 Cycles	4.66cc ~ 5.15cc	
<b>CARBURETOR - Mfr. / Type / I.D. Number</b>	Mikuni / VM22SS / 3M1-00	
Main Jet / Pilot Jet	130 / 17.5	
Needle Jet / Jet Needle-Clip Position	0-6 / 4L6-3	
Slide Cutaway or Throttle Valve	2.0	
Float Level / Fuel Level	21mm ± 1mm / NA	
Idle rpm	Ø	
Max CO* / Max HC* / Set CO	Ø	
<b>SUSPENSION</b>		
Front Forks: Oil Type / Level / Qty	20 Wt. Fork Oil* / Ø / 116cc	
Gas Pressure	Ø	
Spring Length Std	418.5mm	
Monoshock: Oil Type / Qty	Ø	
Gas Pressure	Ø	
Minimum Brake Lining Thickness	Front: 2mm Rear: 2mm	
Tire Size (Nominal Pressure)	F:2.50 18 (1.8 kg/cm <sup>2</sup> /14 psi) R:2.50 18 (1.2 kg/cm <sup>2</sup> /17 psi)	
<b>TRANSMISSION - Oil Type/Qty Chg/Qty Reassemble</b>	SAE 10W/30 SE / 650cc / 600cc	
Primary Drive Type / Teeth / Ratio	Helical Gear / 74-19 / 3.895	
Secondary Drive Type / Teeth / Chain	Chain / 48-14 / RS420-104L	
Clutch Friction Plate Thickness Std ~ Min	3.0 ~ 2.7mm	
Clutch Spring Length Std ~ Min	31.5 ~ 30.5mm	
Middle Gear Case Capacity	Ø	
Final Gear Case Capacity	Ø	
Gear Case Lubricant: Temp. Above 5°C (40°F)	Ø	
Temp. Below 15°C (60°F)	Ø	
All Weather Conditions	Ø	

SERVICE COPY	SER MGR	MECH	MECH	MECH	BINDER
OFFICE COPY	GEN MGR	SALES	PARTS	BINDER	PAGE 1 OF 2

<b>CHARGING SYSTEM</b>	Flywheel Magneto
Battery: Model / Specific Gravity / Charge Rate	Ø
Maximum Output	Ø
<b>TROUBLESHOOTING</b>	
Field Coil Color Code / Ω	Ø
Charge Coil Color Code / Ω	Ø
<b>IGNITION SYSTEM</b>	Capacitor-Discharge Ignition
Ignition Timing	1.8mm BTDC
Spark Plug Type	NGK B7ES
Spark Plug Gap / Torque / Cap Ω	0.6 ~ 0.8mm / 2.3 m·kg / 5K Ω ± 20%
Point Gap / Condenser Capacitance	Ø
<b>TROUBLESHOOTING</b>	
Ignition Coil Test Gap / Primary Ω / Secondary Ω	6mm / 1.0 Ω ± 10% / 5.9K Ω ± 20%
Pulser Coil or Pickup Coil Color Code / Ω	Wht-Red ~ Gnd / 10 Ω ± 10%
Source Coil Color Code / Ω	8m ~ Gnd / 300 Ω ± 10%
<b>LIGHTING SYSTEM</b>	
Headlight / Taillight / Signal Rating	Ø
<b>TROUBLESHOOTING</b>	
Lighting Coil Color Code / Ω	Ø
<b>TORQUE VALUES</b>	
Front Axle Nut	12 x 1.25: 4.3 m·kg
Front Axle Holder Nut	Ø
Rear Axle Nut	10 x 1.25: 3.9 m·kg
Rear Axle Pinch Bolt	Ø
Clutch Nut	12 x 1.0: 4.5 m·kg
Drain Plug	12 x 1.5: 2.5 m·kg
Cylinder Head Cover	Ø
Cylinder Head:	8 x 1.25: 2.5 m·kg
Engine Mounting Bolts: Front, Upper	8 x 1.25: 2.6 m·kg
Rear, Upper	8 x 1.25: 2.6 m·kg
Rear, Lower	10 x 1.25: 3.9 m·kg

Ø = Does Not Apply To This Model  
NA = Information Not Available

\* Available From Yamaha Parts Distributors Inc.  
\* For Diagnostic Use Only

## MX100J

### 1982 SERVICE DATA

<b>MODEL - BUK I.D. NUMBER</b>	MX100J	310			
Initial Engine Number / Frame Number	310-064857 / 310-064857				
Basic Color(s)	Clean White				
Fuel Type / Fuel Tank Capacity / Reserve Capacity	Regular / 4.5 Lit. / 0.3 Lit.				
Dry Vehicle Weight	77 kg				
<b>ENGINE TYPE</b>	2-Stroke, Air-Cooled, Reed Valve				
Bore/Stroke/Number Cylinders/Displacement (cc)	52mm / 45.6mm / 1 / 97cc				
Compression Ratio/Compression Pressure Min~Max	6.7:1 / NA				
Piston Skirt Clearance New ~ Max	0.035 ~ 0.040mm / 0.1mm				
Ring End Gap Top / 2nd / 3rd	0.3 ~ 0.5mm / 0.3 ~ 0.5mm / Ø				
Valve Clearance (Cold) Intake / Exhaust	Ø				
Oil Pressure Hot / rpm	Ø				
Oiling System	Autolube				
Capacity: Dry	1.0 Lit.				
Oil and Filter Change	Ø				
Oil Change	Ø				
Lubricant: Temp. Above 5°C (40°F)	Yamalube 2* or Equivalent				
Temp. Below 15°C (60°F)	Yamalube 2* or Equivalent				
<b>AUXILIARY - Min. Stroke / Color Code</b>	0.20 ~ 0.25mm / Green				
Minimum Output @ 200 Cycles	0.90cc ~ 0.62cc				
Maximum Output @ 200 Cycles	4.65cc ~ 6.15cc				
<b>CARBURETOR - Mfr. / Type / I.D. Number</b>	Mikuni / VM22SS / 3M1-00				
Main Jet / Pilot Jet	130 / 17.5				
Needle Jet / Jet Needle-Clip Position	0-6 / 4L6-3				
Slide Cutaway or Throttle Valve	2.0				
Float Level / Fuel Level	21mm ± 1mm / NA				
Idle rpm	Ø				
Max CO* / Max HC* / Set CO	Ø				
<b>SUSPENSION</b>					
Front Forks: Oil Type / Level / Qty	20 Wt. Fork Oil* / Ø / 116cc				
Gas Pressure	Ø				
Spring Length Std	416.5mm				
Monoshock: Oil Type / Qty	Ø				
Gas Pressure	Ø				
Minimum Brake Lining Thickness	Front: 2mm Rear: 2mm				
Tire Size (Nominal Pressure)	F: 2.50-18 (1.0 kg/cm <sup>2</sup> ) R: 3.00-16 (1.2 kg/cm <sup>2</sup> )				
<b>TRANSMISSION - Oil Type / Qty / Cha./Cay Reassembly</b>	SAE 10W30 SE / 650cc / 600cc				
Primary Drive Type / Teeth / Ratio	Helical Gear / 74-19 / 3.895				
Secondary Drive Type / Teeth / Chain	Chain / 48-14 / RS420-104L				
Clutch Friction Plate Thickness Std ~ Min	3.0 ~ 2.7mm				
Clutch Spring Length Std ~ Min	31.5 ~ 30.5mm				
Middle Gear Case Capacity	Ø				
Final Gear Case Capacity	Ø				
Gear Case Lubricant: Temp. Above 5°C (40°F)	Ø				
Temp. Below 15°C (60°F)	Ø				
All Weather Conditions	Ø				
<b>SERVICE COPY</b>	SER MGR	MECH	MECH	MECH	BINDER
<b>OFFICE COPY</b>	GEN MGR	SALES	PARTS	BINDER	

www.legends-yamaha.com

<b>CHARGING SYSTEM</b>	Flywheel Magneto
Battery: Model / Specific Gravity / Charge Rate	Ø
Maximum Output	Ø
<b>TROUBLESHOOTING</b>	
Field Coil Color Code / Ø	Ø
Charge Coil Color Code / Ø	Ø
<b>IGNITION SYSTEM</b>	Capacitor-Discharge Ignition
Ignition Timing	1.8mm BTDC
<b>SPARK PLUGS</b>	
Spark Plug Type	NGK B7ES
Spark Plug Gap / Torque / Cap Ø	0.6 ~ 0.8mm / 2.3 m·kg / 5K Ø ± 20%
Point Gap / Condenser Capacitance	Ø
<b>TROUBLESHOOTING</b>	
Ignition Coil Test Gap / Primary Ø / Secondary Ø	6mm / 1.0 Ø ± 10% / 5.9K Ø ± 20%
Pulser Coil or Pickup Coil Color Code / Ø	Whi-Red ~ Gnd / 10 Ø ± 10%
Sensor Coil Color Code / Ø	Brn ~ Gnd / 300 Ø ± 10%
<b>LIGHTING SYSTEM</b>	
Headlight / Taillight / Signal Rating	Ø
<b>TROUBLESHOOTING</b>	
Lighting Coil Color Code / Ø	Ø
<b>TORQUE VALUES</b>	
Front Axle Nut	12 x 1.25: 4.3 m·kg
Front Axle Holder Nut	Ø
Rear Axle Nut	10 x 1.25: 3.9 m·kg
Rear Axle Pinch Bolt	Ø
Clutch Nut	12 x 1.0: 4.5 m·kg
Drain Plug	12 x 1.6: 2.5 m·kg
Cylinder Head Cover	Ø
Cylinder Head:	8 x 1.25: 2.5 m·kg
<b>ENGINE MOUNTING BOLTS</b>	
Front, Upper	8 x 1.25: 2.6 m·kg
Rear, Upper	8 x 1.25: 2.6 m·kg
Rear, Lower	10 x 1.25: 3.9 m·kg

Ø = Does Not Apply To This Model  
NA = Information Not Available

\* Available From Yamaha Parts Distributors Inc.  
\* For Diagnostic Use Only

**SERVICE LITERATURE**

PUBLICATION	PART NUMBER	REMARKS
Owner's/Service Manual Assembly Manual	LIT-11626-03-08 LIT-11666-01-70	Same as MX100G, Supp. to MX100F (01-63) and DT100F (00-36)