



The swinging world of
YAMAHA



www.legends-yamaha-enduro.com

HERE'S WHY PEOPLE ARE SWINGING TO YAMAHA

Of all lightweight bikes made today, Yamaha is the one making the big reputation for itself *as a machine*.

Item: Yamaha was the first bike in history to take 8 out of 10 top places at Daytona two years running.

Item: Auto & Motor Sport magazine's Safety and Engineering Award has gone to Yamaha.

Item: Yamaha components, from lights to exhaust spark arresters, have won recognition and approval from such strict authorities as California Highway Patrol and the U.S. Forestry Service.

Those Amazing Yamaha Engines

Our engines have fewer moving parts, yet deliver power impulses at *twice* the rate of four-cycle engines, giving you a smoother ride.

All Yamaha engines are two-cycle design — high-performance, trouble-free, fast-responding, and long-lived.

Two-cycle is the most efficient light engine configuration and Yamaha has developed it to its highest degree of perfection.

Gas Here, Oil There

You don't need to pre-mix gas and oil in your new Yamaha.

Just pour the gas in the gas tank, and the oil in the oil tank, and let the engine do the work. Yamaha's exclusive Oil Injection System meters oil into the engine automatically.

At low speeds, oil is used sparingly; at higher speeds and loads, it's applied more abundantly. Exhaust smoke is drastically reduced by this method, and carbon build-up is also cut. It's a time-proved system, based on a simple idea. We're glad we thought of it first.

Big, Powerful Brakes

We outfit all our machines with brakes that more than match their going potential. Hit the brakes or feather them, and any new Yamaha you ride can be pulled down in seconds, without fade, time and time again. Knowledge of your machine and confidence in it are two things a rider needs. We try to give them both to you at no added cost.

Safety: You and Yamaha

We believe we research, develop and build the quickest, most agile, neatest-stopping machines made. They really handle. If we could, we'd give them intelligence. But we can't. You are the crucial part of the bike-and-rider equation. Know your bike, know your road, know what's happening *now*. That's the best way there is to avert and to avoid trouble.

Add a Yamaha to your household, but you'll still be the brains in the family. (*Special note: we've accumulated a wealth of detail about riding well without being timid, and we've made a book out of it. Ask your dealer for a free copy.*)

CROSS COUNTRY 305 (YM-1)

Cycle World says this bike is the "305cc machine that gives 500cc performance." The YM-1 combines excellent handling and roadholding with comfort plus for the long-distance run. 5-speed gearbox and smooth twin-cylinder power put it through a quarter mile in 14.9 sec.



Cylinder..... Twin
 Displacement 305 cc.
 Lubrication system ... Separate lubrication
 by Yamaha Autolube
 Maximum Horsepower 29.5 BHP
 @ 7,000 rpm
 Speed range 95-100 mph
 Climbing ability 23°
 Gearbox Constant mesh 5 speed
 Net Weight 277 lbs. (126 kgs)
 Wheelbase..... 51" (1,290 mm)
 Electrical system 6V
 Fuel Tank Capacity..... 3.7 gal. (14 lit.)

BIG BEAR SCRAMBLER 305 (YM-2C)

Here's a newer, better dual purpose scrambler for the rider who mixes street riding with dirt riding. Sports styling, upswept pipes, twin carburetors, telescopic front forks, and 3 position rear shocks make this your top road and dirt machine.



Cylinders Twin
 Displacement 305 cc.
 Lubrication system .. Separate lubrication
 by Yamaha Autolube
 Maximum Horsepower 30.5 BHP
 @ 7,000 rpm
 Speed range 90-100 mph
 Climbing ability 28°
 Gearbox Constant mesh 5 speed
 Net Weight 326 lbs. (148 kg)
 Wheelbase 51" (1,290 mm)
 Electrical system 6 V
 Fuel Tank Capacity 4.0 gal. (15.0 lit.)

CATALINA 250 (YDS-3)

The five-speed sport twin 250 sired by the world famous racing Yamahas, combines power and acceleration with smart styling and rugged dependability. Proven oil injection system, powerful waterproof and dustproof safety brakes, 3-way adjustable rear suspension. Tops in competition. A truly spirited machine that responds to your every command.



Cylinders	Twin
Displacement	246 cc.
Lubrication system	Separate oil supplying system
Maximum Horsepower	28 BHP @ 8,000 rpm
Speed range	85-90 mph
Climbing ability	27°
Gearbox	Constant mesh 5 speed
Net Weight!	349 lbs. (158 kgs)
Wheelbase	51" (1,290 mm)
Electrical system	6 V
Fuel Tank Capacity	3.7 gal. (14 lit.)

BIG BEAR SCRAMBLER 250 (YDS-3C)

Here's the potent YDS-3 in scrambler get-up. Twin carbs, automatic Oil Injection System. Oversize double leading shoe Daytona Racor brakes give you high performance stopping power. Lights are detachable and knobby tires are fitted at the factory as original equipment.

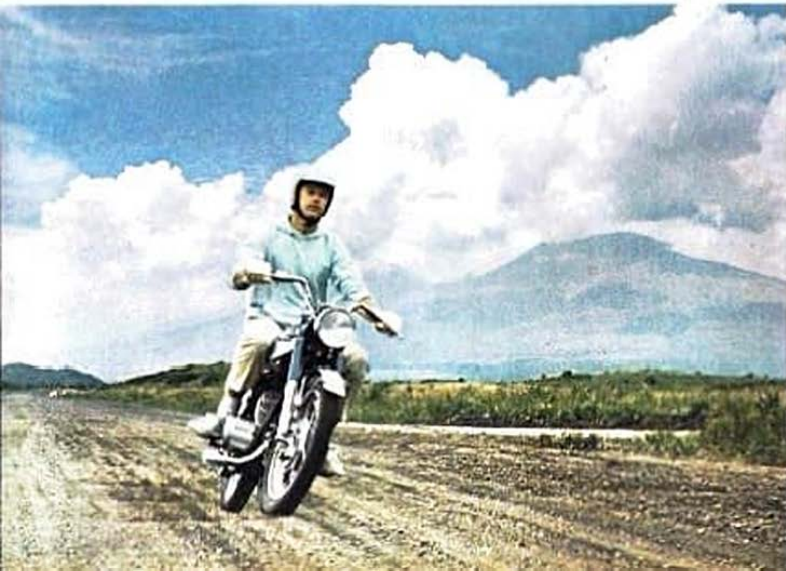


Cylinders Twin
 Displacement 246 cc.
 Lubrication system Separate oil
 supplying system
 Maximum Horsepower 28 BHP
 (at 8,000 rpm)
 Speed range 85-90 mph
 Climbing ability 27"
 Gearbox Constant mesh 5 speed
 Net Weight 349 lbs. (158 kgs)
 Wheelbase 51" (1,290 mm)
 Electrical system 6 V
 Fuel Tank Capacity 3.7 gal. (14 lit.)

CATALINA ELECTRA 250 (YDS-5) ELECTRIC STARTER

A new refined touring model combining all the advanced features of the famous YDS series. Daytona-type full-width brakes and tough 5-speed gear box, plus Yamaha's proven Oil Injection System.

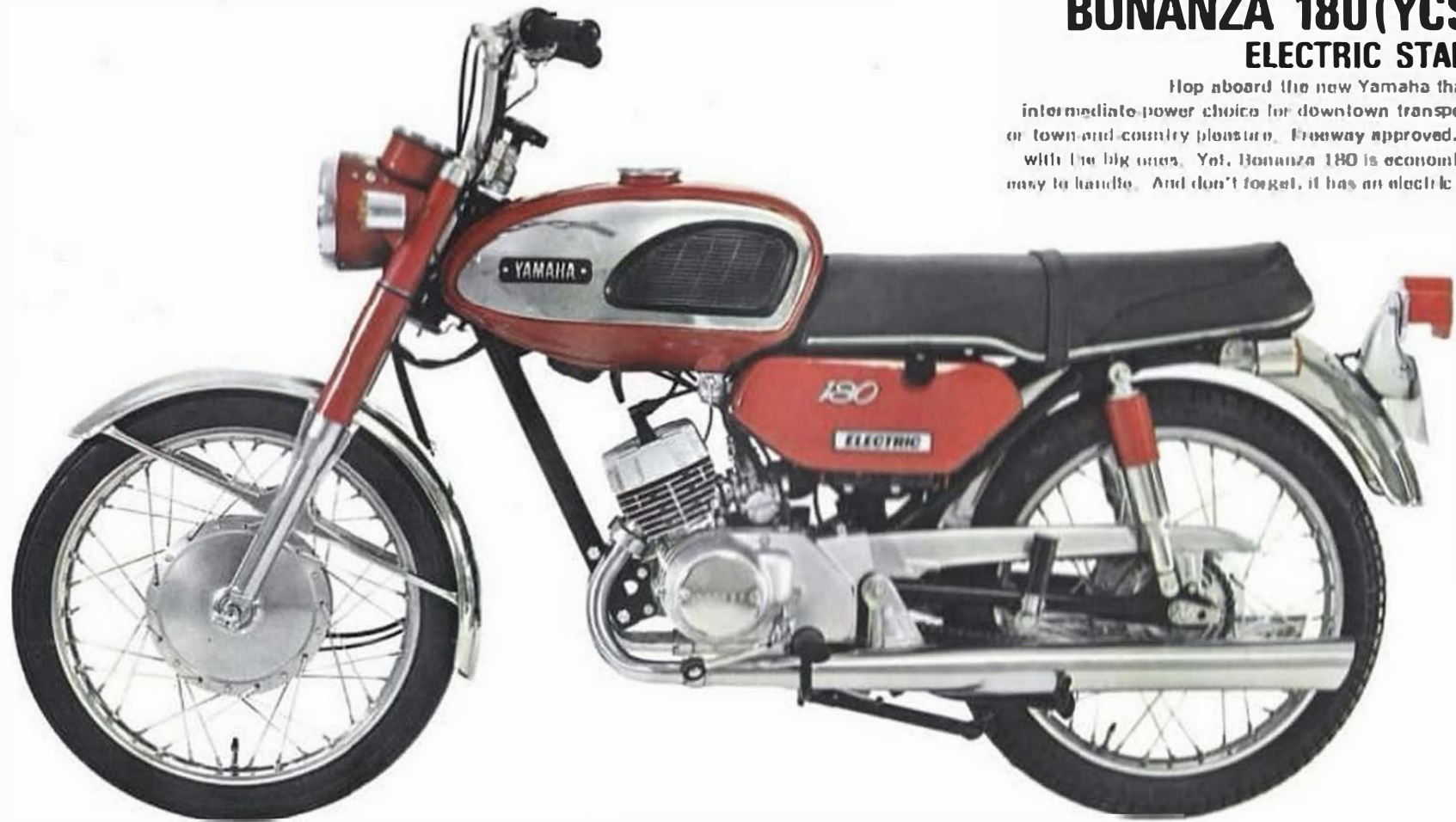
Gives outstanding performance and dependability with the added convenience of push button electric starting.



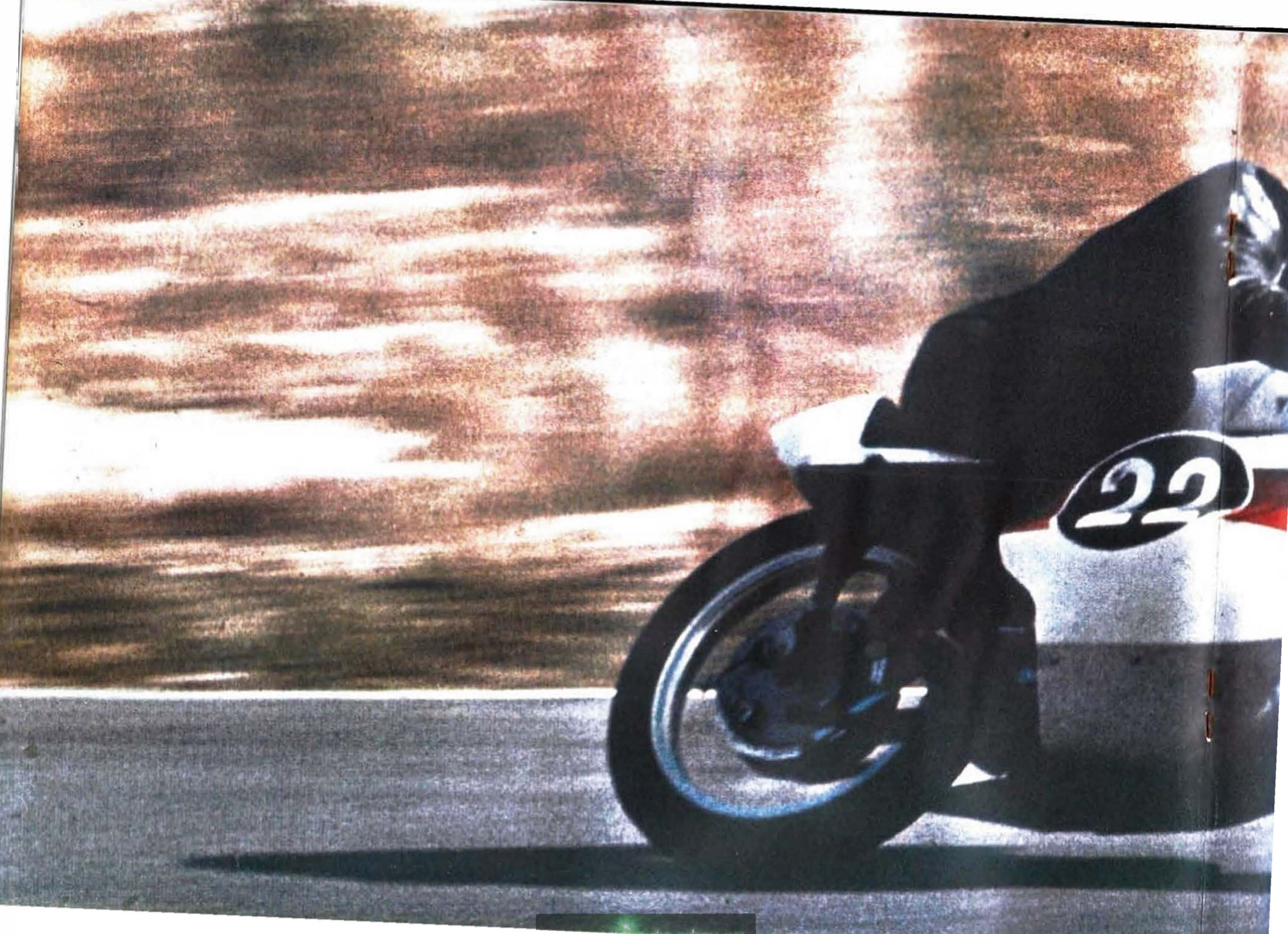
Cylinders	Twin
Displacement	246 cc.
Lubrication system	Separate oil supplying system
Maximum Horsepower	29.5 BHP @ 8,000 rpm
Speed range	95-105 mph
Climbing ability	23.5°
Gearbox	Constant mesh 5 speed
Net Weight	324 lbs. (147 kgs)
Wheelbase	51" (1,290 mm)
Electrical system	12 V
Fuel Tank Capacity	4.0 gal. (15.0 lit.)

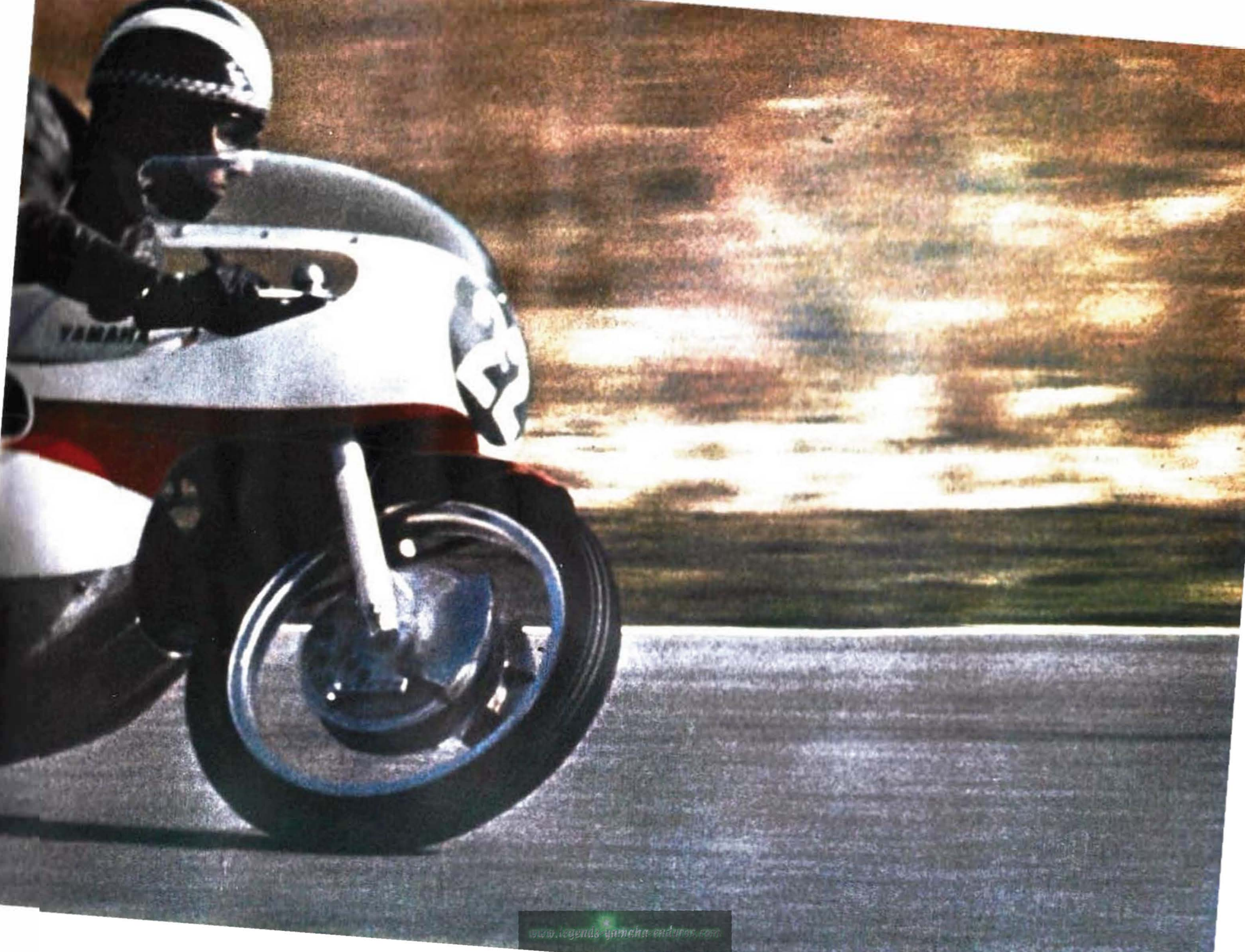
BONANZA 180 (YCS-1) ELECTRIC STARTER

Hop aboard the new Yamaha that's the intermediate power choice for downtown transportation or town and country pleasure. Freeway approved, it runs with the big ones. Yet, Bonanza 180 is economical and easy to handle. And don't forget, it has an electric starter.



Cylinders	Twin
Displacement	180 cc.
Lubrication system	Separate oil supplying system
Maximum Horsepower	21 BHP @ 8,000 rpm
Speed range	85-90 mph
Climbing ability	23°
Gearbox	Constant mesh 5 speed
Net Weight	262 lbs. (119 kgs)
Wheelbase	49" (1,240 mm)
Electrical system	12 V
Fuel Tank Capacity	3.3 gal. (11.4 lit.)





SANTA BARBARA 125 (YA-6) ELECTRIC STARTER

Perfect sportcycle for weekday transportation or weekend touring. A truly beautiful sportcycle. Up to 160 mpg. Convenient electric starter, famous rotary valve engine oil injection and easy-shifting 4-speed gearbox. Try to find another machine with all these features. Just try!



Cylinders	Single
Displacement	125 cc.
Lubrication system	Separate oil supplying system
Maximum Horsepower	13.5 BHP @ 6,700 rpm
Speed range	65-70 mph
Climbing ability	20"
Gearbox	Constant mesh 4 speed
Net Weight	264 lbs. (120 kgs)
Wheelbase.....	50" (1,265 mm)
Electrical system	12 V
Fuel Tank Capacity	2.4 gal. (9.0 lit.)

TWIN JET 100 (YL-1)

First twin cylinder, twin carb engine in its class!
This beauty handles like a racing machine.
Streamlined styling, Twin exhaust pipes,
Smooth 4 speed gearbox, dustproof
and waterproof brakes, and Yamaha's
powerful Injection System.

TWIN JET ELECTRA (YL-1E) ELECTRIC STARTER

Same as YL-1 but with convenient
electric starter.



Cylinders	Twin
Displacement	97 cc.
Lubrication system	Separate oil supplying system
Maximum Horsepower	9.5 BHP @ 8,500 rpm
Speed range	60-65 mph
Climbing ability	20°
Gearbox	Constant mesh 4 speed
Net Weight	180 lbs. (82 kgs)
Wheelbase	45" (1,139 mm)
Electrical system	6 V (12 V)
Fuel Tank Capacity	2.0 gal. (5.2 lit.)

ROTARY JET 100 (YL-2)

Here's a brand new 100 single with performance that will surprise you! It outperforms anything in its class (plus a few bigger machines, too). Single cylinder simplicity with power of a twin. Proved Autolube, Oil Injection system and famous Yamaha rotary valve. Easy shifting 4-speed gearbox.



Cylinders..... Rotary Valve Single
Displacement 97 cc.
Lubrication system Separate oil
supplying system
Maximum Horsepower 9.5 BHP
@ 7,500 rpm
Speed range 60-65 mph
Climbing ability 22°
Gearbox Constant mesh 4 speed
Net Weight 200 lbs. (91 kgs)
Wheelbase..... 47" (1,189 mm)
Electrical system..... 6 V
Fuel Tank Capacity 2.2 gal. (8.4 lit.)

YAMAHA TRAILMASTER 100 (YL-2C) ELECTRIC STARTER

A new, rugged 100 single with the power of larger sportcycles. Great for sportsmen, in town or out. Ride the back country with it, take it hunting, fishing or what have you. Smooth 4-speed gearbox, powerful 2-cycle engine. Proven oil injection system. Rotary valve, and waterproof, dustproof safety brakes.



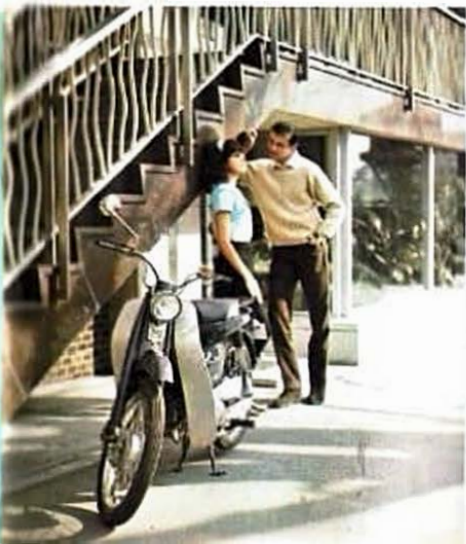
Cylinders Rotary Value Single
 Displacement 97 cc.
 Lubrication system Separate oil
 supplying system
 Maximum Horsepower 9.5 BHP
 (@ 7,500 rpm)
 Speed range 40-45 mph
 (Std. Spr. 60-65 mph)
 Climbing ability 35"
 Gearbox Constant mesh 4 speed
 Net Weight 205 lbs. (93 kgs)
 Wheelbase 47" (1,189 mm)
 Electrical system 12 V
 Fuel Tank Capacity 2.2 gal. (8.4 lit.)

NEWPORT 50 (U-5)

Easiest Yamaha to buy, easiest to operate, most economical, too. Sturdy steel frame with step-through style. Automatic clutch with 3 speed gearbox. Rotary valve engine; just turn the throttle and go! Dependable all weather brakes. Up to 200 miles per gallon, the perfect introduction to cycle ownership.

NEWPORT ELECTRA 50 (U-5E) ELECTRIC STARTER

Same as U-5, but with convenient electric starter.

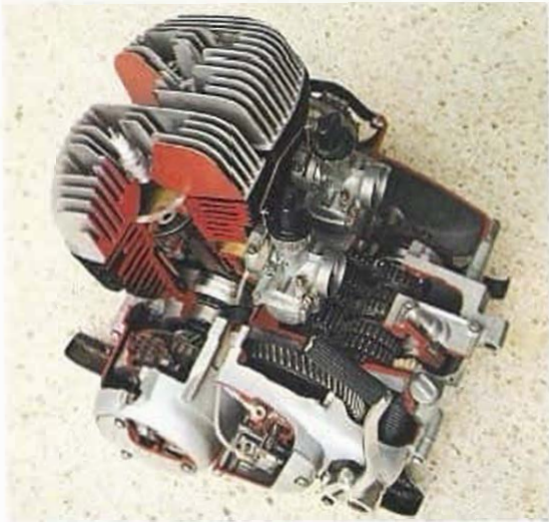


Cylinders	Rotary Valve Single
Displacement	50 cc.
Lubrication system	Separate oil supplying system
Maximum Horsepower	4.5 BHP @ 6,500 rpm
Speed range	40-45 mph
Climbing ability	20°
Gearbox	Constant mesh 3 speed
Net Weight	158 lbs. (71 kgs)
Wheelbase	45" (1,139 mm)
Electrical system	6 V (12 V)
Fuel Tank Capacity	0.9 gal. (3.4 lit.)

YAMAHA'S ADVANCED ENGINEERING FEATURES

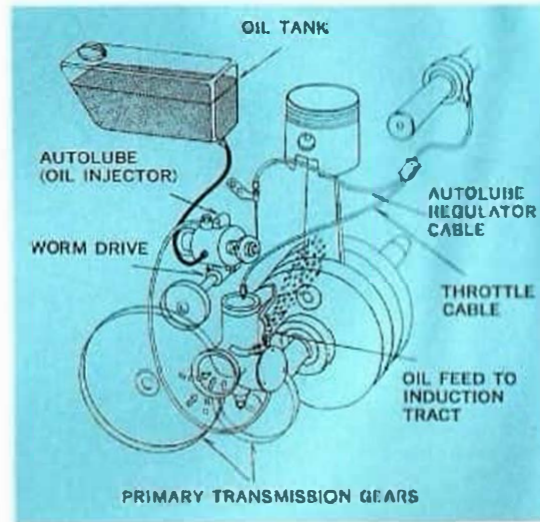
Two-Cycle Engines

This is the generally-accepted ideal design for lightweight engines. Two-cycle engines, with fewer moving parts than four-cycle engines, develop power impulses at twice the rate of their counterparts, and are extremely flexible and reliable. Notice, too, how remarkably smooth your Yamaha engine runs. The high state-of-the-art of Yamaha engineering is something you can *feel*.



Oil Injection System

We call it our "Autolube oil" system. It's the first pressure-lubrication system ever to be made standard equipment on a production two-cycle bike. Oil goes in one tank, gas in another. There's no pre-mixing. Then, oil is metered automatically to the engine on demand, depending on speed and load. Lubrication is extremely thorough, exhaust smoke is markedly reduced, and carbon build-up and spark plug fouling are brought down to negligible levels.



Easy Shifting Gears

Depending on the model you select, you can get either a three, four or five-speed gearbox on your Yamaha. Each of them shifts, up or down, with a touch of your toe. None of them needs a special break-in period, and all of them are constant-mesh design. Embarrassing crunches and missed shifts are things of the past when you ride a Yamaha.



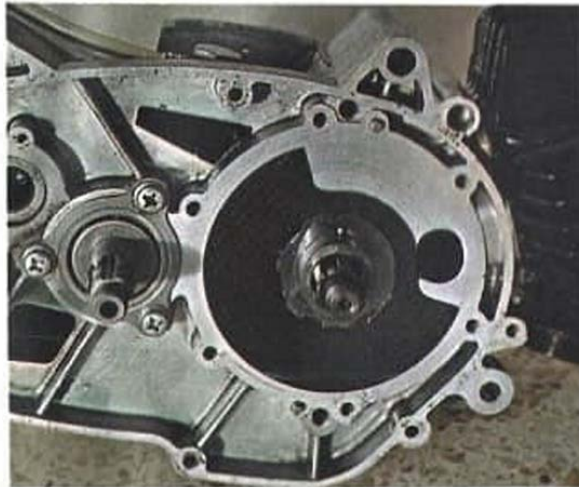
Waterproof-Dustproof Brakes

Our brake designs are exclusive to Yamaha. On street and sport bikes, brake housings are sealed tight as a drum. Despite dust, water and bad weather, braking response is as uniform as it is positive. On the other hand, our racing machines have hard-lined air-cooled brakes. And our larger models have double-leading-shoe front brakes to match their high-performance characteristics. Yamaha fits brakes to fit the machines. That's all there is to it.



Rotary Jet Valve

Clattering valves, such as you find in four-cycle engines, have no place in a Yamaha. A special disc, rotating in front of the fuel inlet port, regulates fuel flow. It's a positive, simple device that's as trouble-free as a valve can be, and is standard on our single cylinder engines.



Six Month Warranty

Your Yamaha is *totally* warranted for six months or 4,000 miles, whichever is first. Repairs or replacements are absolutely free if *anything* not your fault goes wrong with your new Yamaha within six months or 4,000 miles. All you do is mail the warranty form within 10 days after purchase . . . and get your free 500- and 1500-mile service checks. *That's* a warranty that shows confidence—in the superiority of engineering and craftsmanship that make Yamaha the top-selling 2-cycle sportcycle in the U.S.

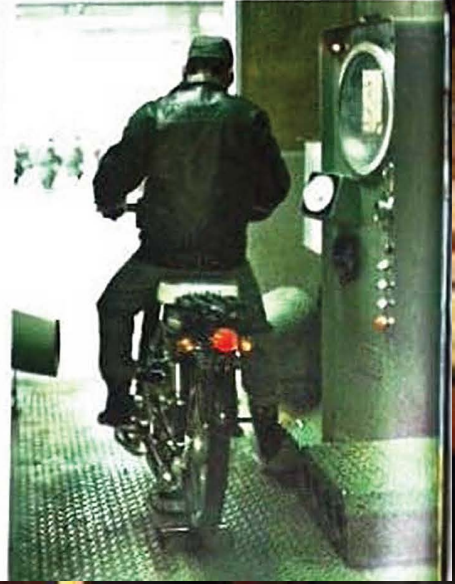
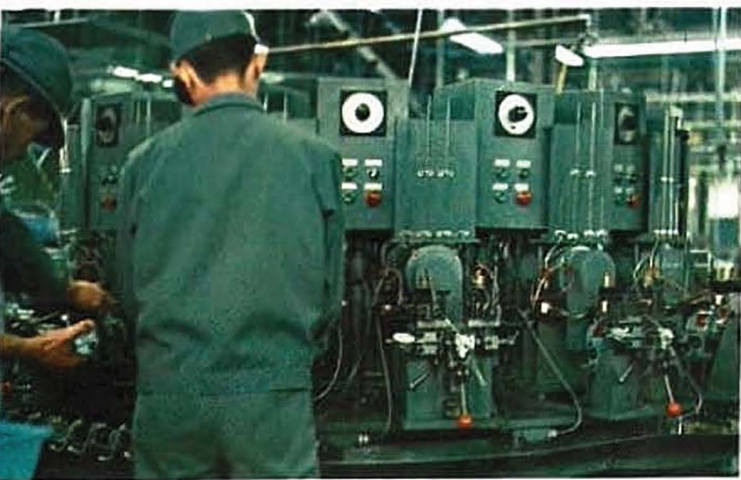
HOW YAMAHA EARNS ITS REPUTATION FOR QUALITY

The story begins a long time ago. In 1887, to be exact, when a man named Torakusu Yamaha began making reed organs. They were good ones, painstakingly created with a perfectionist's attitude toward quality. Soon the fame of the organs spread and so did sales.

About the turn of the century, Yamaha began manufacturing pianos and adopted the symbol of three crossed tuning forks for his young company, for the tuning fork is the testing instrument to make certain a musical instrument has a perfect tone. That tuning fork symbol now marks all the quality products produced by Yamaha . . . including motorcycles. It also serves as a constant reminder to all the people who design and craft these products that Yamaha's exceptionally high standards for quality must be maintained always . . .

In Yamaha's huge modern motorcycle plants, an extra touch of care in making a product is still a tradition. Here, precisely machined parts are made to Yamaha's very exacting specifications. And each one is thoroughly inspected before being permitted to go on the line. And, as the assembly moves to a finished bike, there are quality control inspections at specially placed stations all along the way. Then, when each bike is finished, it is subject to a track test — then inspected thoroughly again. And finally, to seek out any defects that might be hidden otherwise, the Yamaha sportcycle is severely tested on a dynamometer.

When a Yamaha has passed *this* kind of quality testing, you can be sure of one thing: It's good. So good Yamaha puts an exceptional guarantee on it. So good it's earned a world-wide reputation for safety, exacting engineering standards, and quality. So good it's the top-selling 2-cycle sportcycle in America. That's the reward of earning a reputation for quality.



YAMAHA

INTERNATIONAL CORPORATION

Los Angeles 90054

The world's most diversified manufacturers
of quality leisure time products:

- Lightweight sportcycles
- Epoxi skis
- Pianos
- Guitars
- Drums
- Transistorized organs

QUALITY



SINCE 1887



www.legends-yamaha-enduros.com