



YAMAHA

www.legends-yamaha-enduros.com

GT80G

ASSEMBLY MANUAL



Particularly important information is distinguished in this manual by the following notations:

NOTE: A NOTE provides key information to make procedures easier or clearer.

CAUTION: . . . A CAUTION indicates special procedures that must be followed to avoid damage to the motorcycle.

WARNING: . . A WARNING indicates special procedures that must be followed to avoid injury to a motorcycle operator or person inspecting or repairing the motorcycle.

www.legends-yamaha-enduros.com

GT80G
ASSEMBLY MANUAL
1st EDITION, APRIL 1979
OVERSEAS SERVICE DEPARTMENT
YAMAHA MOTOR CO., LTD.
IWATA, JAPAN
LIT-11666-01-68

FOREWORD

This Supplementary Assembly Manual for GT80G has been published to supplement the Assembly Manual for GT80E. For complete information on assembly procedure, it is necessary to use this Supplementary Assembly Manual together with the Assembly Manual for GT80E, Dealer Set-up and Pre-delivery Check List, Service Manual, and Parts List for this model.

Proper set-up, assembly and pre-delivery service is necessary for the following reason:

To assure the long life and performance the customer expects from his new Yamaha motorcycle.

To minimize service problems during the break-in period.

To conform with federal new vehicle regulations.

NOTICE

The service specifications given in this manual are based on the model as manufactured. Modifications and significant changes in specifications and/or procedures will be forwarded to all Authorized Yamaha dealers.

The procedures below are described in the order that the mechanic should follow. Special care should be taken to ensure that the procedures are carried out correctly and completely. Failure to do so can result in poor performance, excessive emissions, and possible harm to the machine and/or rider.

The DEALER SET-UP AND PRE-DELIVERY CHECK LIST has been designed to be used with this Assembly Manual. As each procedure is satisfactorily completed, the mechanic should mark the appropriate space on the sheet. After it has been signed by the assembling mechanic, the servicing mechanic, and the customer, a copy of the Check List should be given to the customer and another copy retained in the dealership files. If the Service Manager test rides the motorcycle before delivery, he should also sign the Check List.

IMPORTANT:

This Assembly Manual contains important information regarding procedures designed to ensure proper emissions control function and service. Please read this material carefully and carry out the prescribed procedures properly.

CONCERNING CRATE DAMAGE:

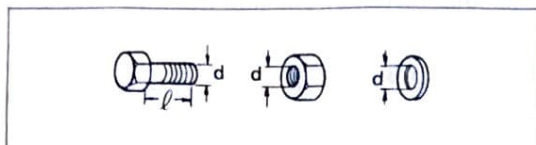
Follow the instructions in the Dealer Warranty Handbook, Procedure Section.

Details of changes

The procedure for handlebar disassembly has been changed and as a result, the place where the disassembled parts are carried has been partly changed.

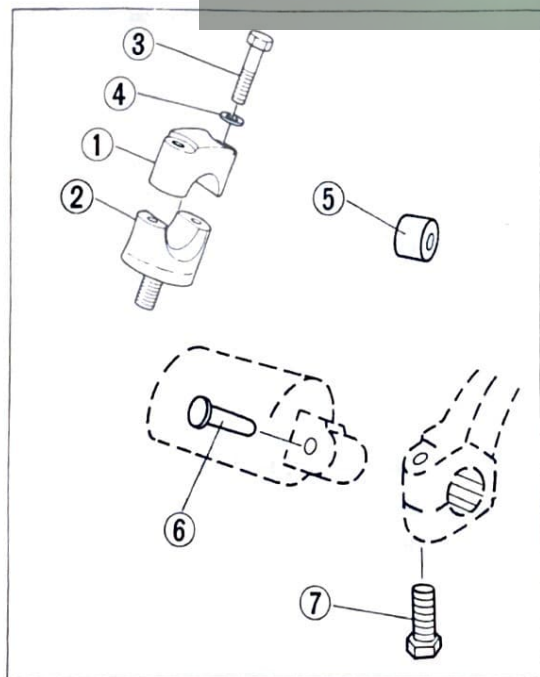
NOTE:

The sizes of bolts, nuts, washers and collars are shown below. The sizes of special parts are indicated in the respective tables.



Parts List: Vinyl bag "A"

No.	Part name	Q'ty	Remarks
1	Upper holder	2	Handlebar
2	Lower holder	2	
3	Bolt (d=6mm, l=35mm)	4	
4	Plate washer	4	
5	Collar	1	F. axle
6	Clevis pin	1	Footrest (R)
7	Bolt (d=6mm, l=25mm)	1	Kick crank

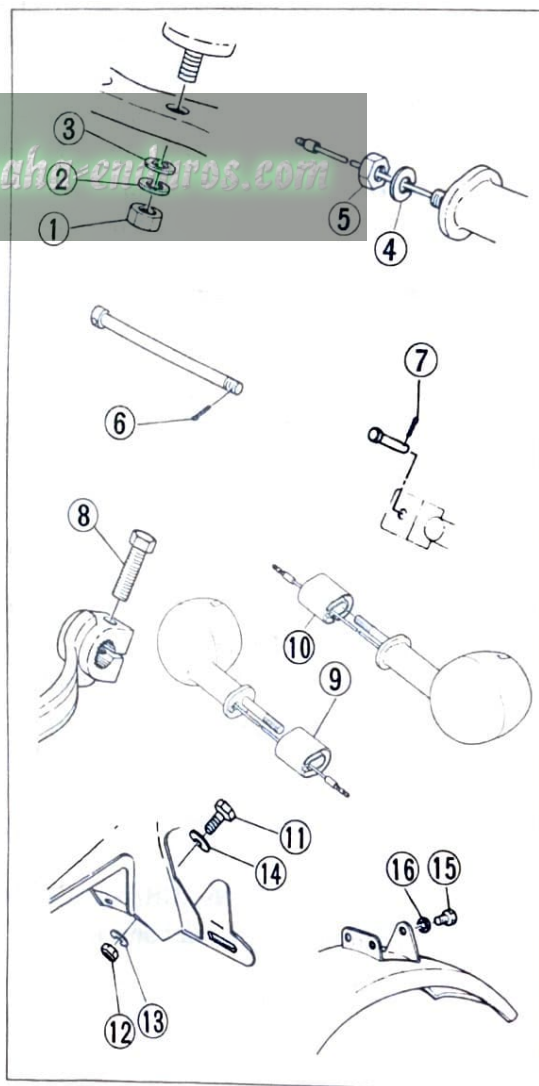


Parts List: Foam tray

* The footrest (right) is placed on foam styrol tray in place of the vinyl bag.

Parts List: Vinyl bag "B"

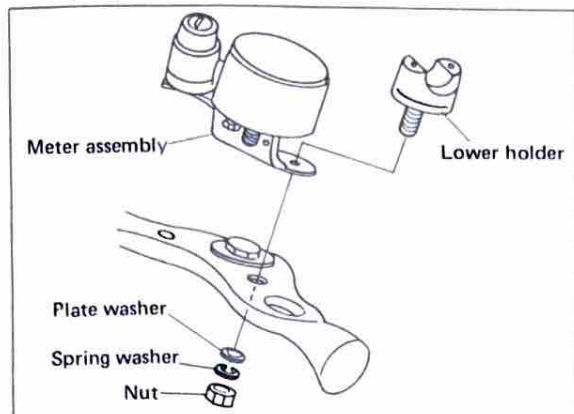
No.	Part name	Q'ty	Remarks
1	Nut (d=6mm)	2	Handle under holder
2	Spring washer (d=6mm)	2	
3	Plate washer (d=6mm)	2	
4	Spring washer (d=8mm)	3	Front, Rear flasher
5	Nut (d=8mm)	3	
6	Split pin	1	F. axle
7	Split pin	1	Footrest (R)
8	Bolt (d=6mm, l=20mm)	1	Change pedal
9	Flasher collar (R)	1	Rear flasher
10	Flasher collar (L)	1	
11	Bolt (d=6mm, l=12mm)	2	Tail light
12	Nut (d=6mm)	2	
13	Spring washer (d=6mm)	2	
14	Plate washer (d=6mm)	2	Front fender
15	Hexagon bolt (d=6mm, l=10mm)	1	
16	Plate washer (d=6mm)	1	



SET-UP PROCEDURES

Handlebar and speedometer installation

1. Install the speedometer and lower handle holder to handle crown using spring washer, plate washer and hexagon nut (M6).



Tightening torque: 3.0 m·kg (22 ft·lb)

2. Grease the right end of the handlebar and the throttle grip housing and temporarily fit the throttle grip.

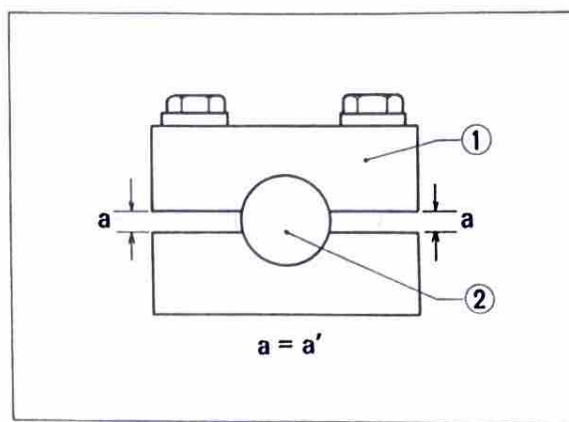


3. Install the handlebar using two upper holders, four spring washers, and hexagon bolts.

Tightening torque: 1.0 m·kg (7 ft·lb)

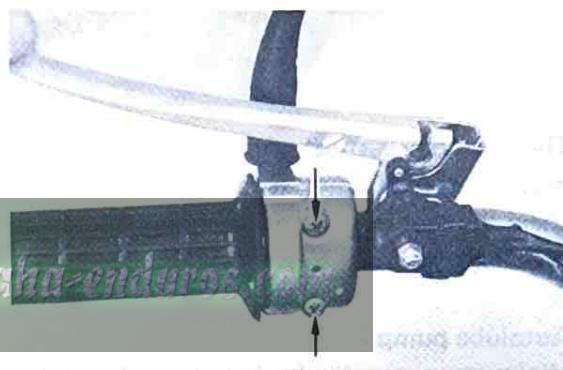
CAUTION:

Tighten bolts in stages and maintain an equal gap on each side of both holders.



1. Holder 2. Handlebar

4. Slip the throttle grip over the handlebar to the limit and slide it back about 5 mm (0.2 in). Assemble the throttle housing using the screws provided.



WARNING:

Make certain throttle grip rotates on the handlebar freely without binding. If not, normal throttle return will be impaired.

Part of the description of "Pre-delivery Service" has been changed as follows:

Checking the drive chain tension

To check the chain play, the motorcycle must stand vertically with both wheels on the ground and without a passenger on it. Then measure the play at the bottom of the chain at a point midway between the drive and driven sprockets.



The normal vertical deflection is approximately 20 ~ 30 mm (0.8 ~ 1.2 in). If the chain deflection is not as specified, adjust the chain tension.

www.legends-yamaha-enduros.com

Autolube pump

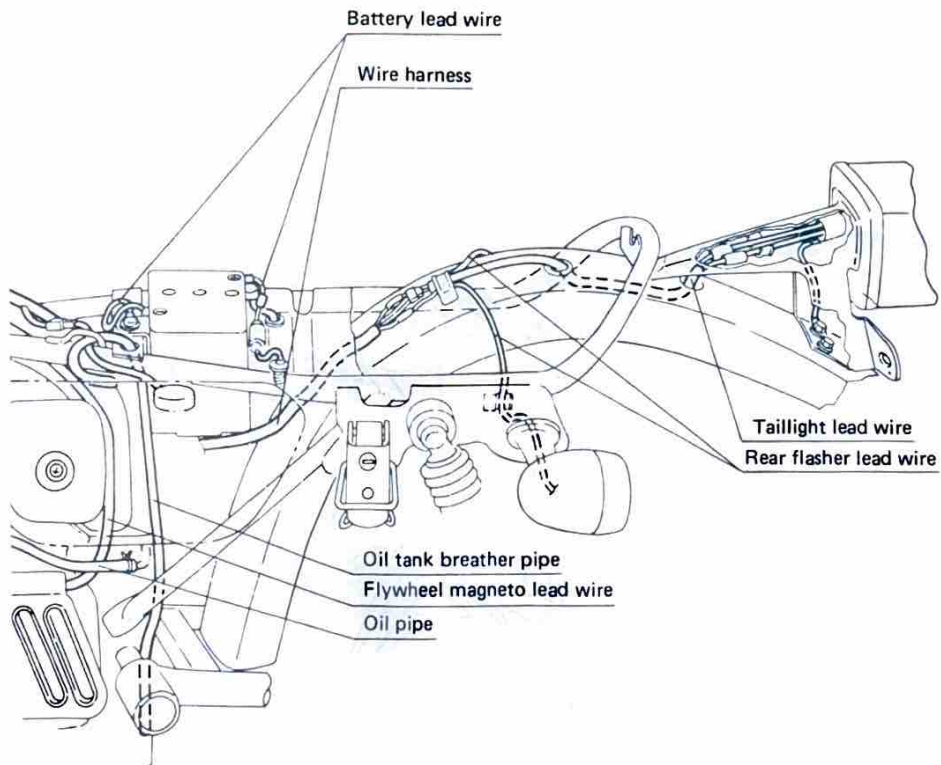
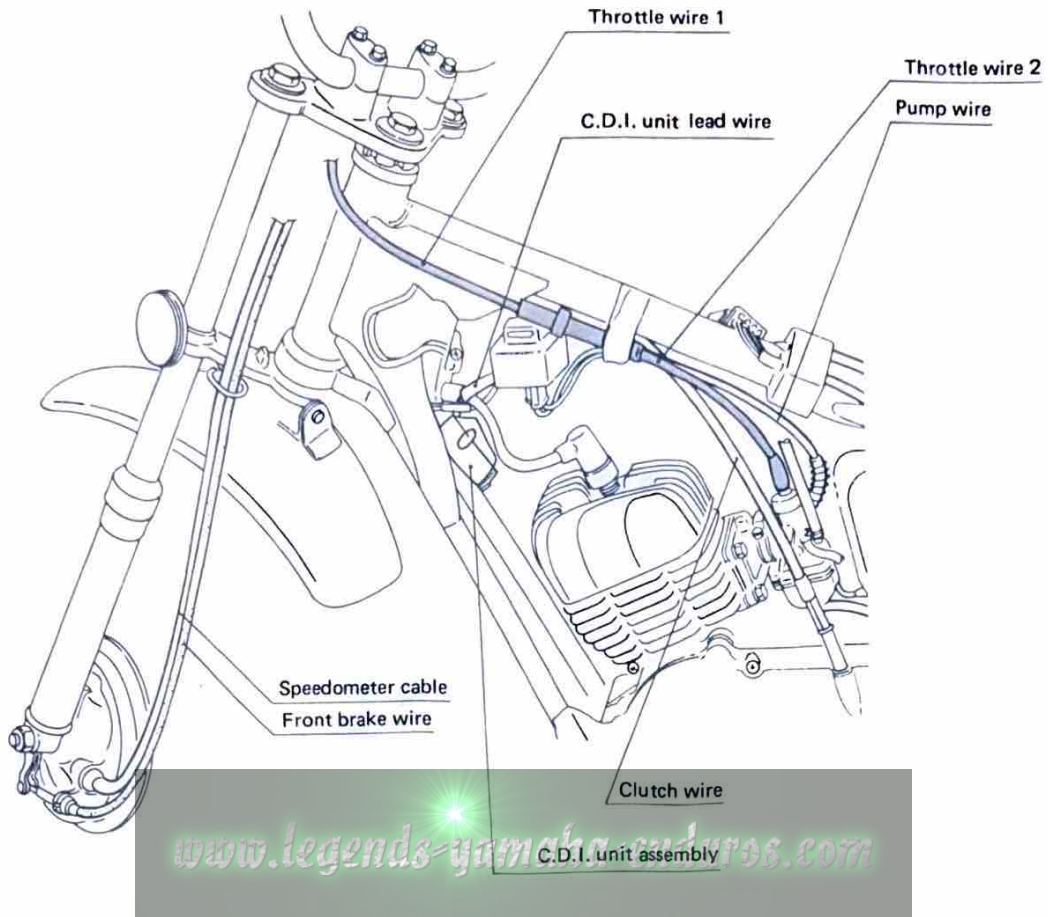
Minimum pump stroke has been changed as follows:

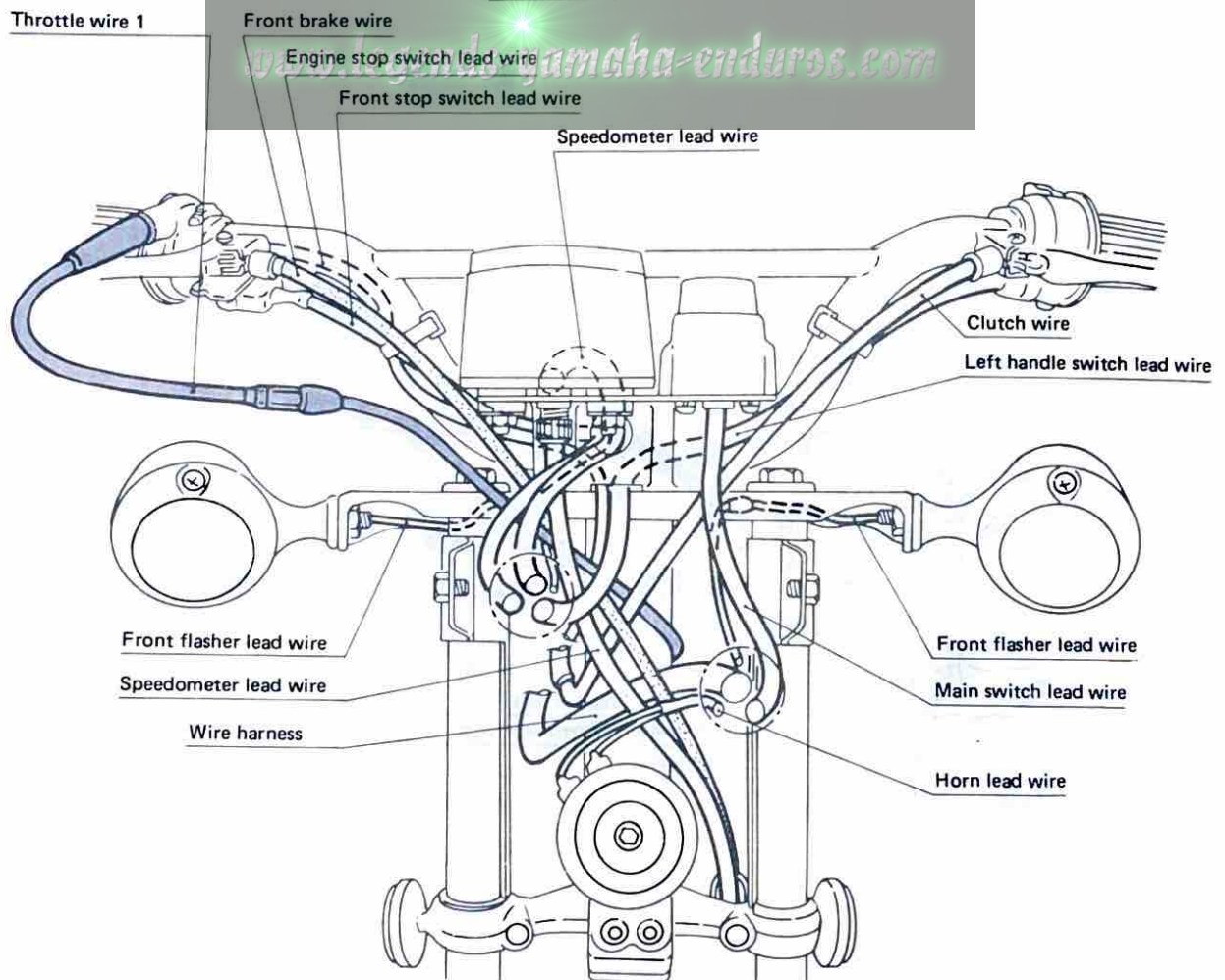
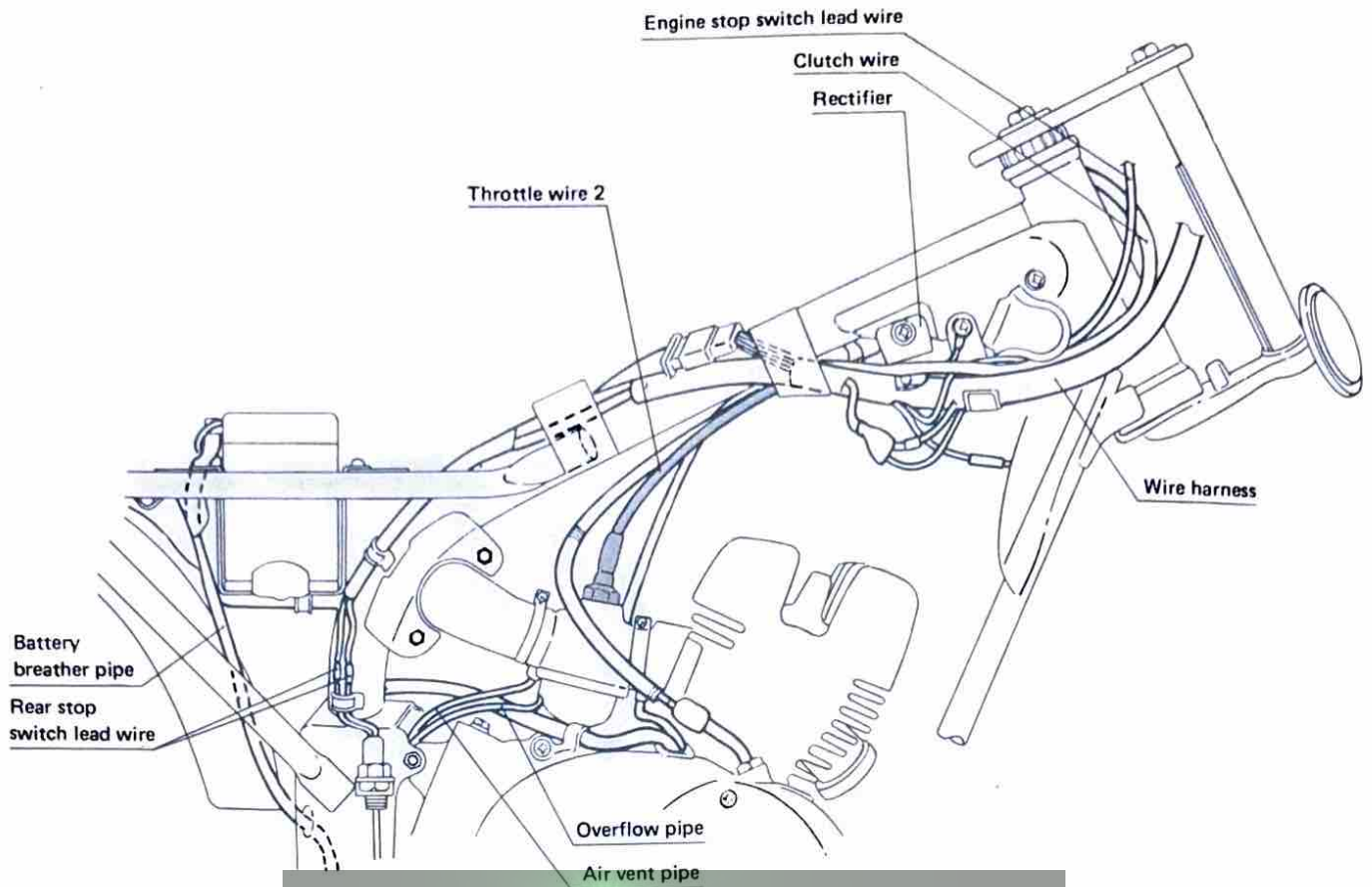
Minimum pump stroke: 0.20 ~ 0.25 mm (0.008 ~ 0.01 in)
--

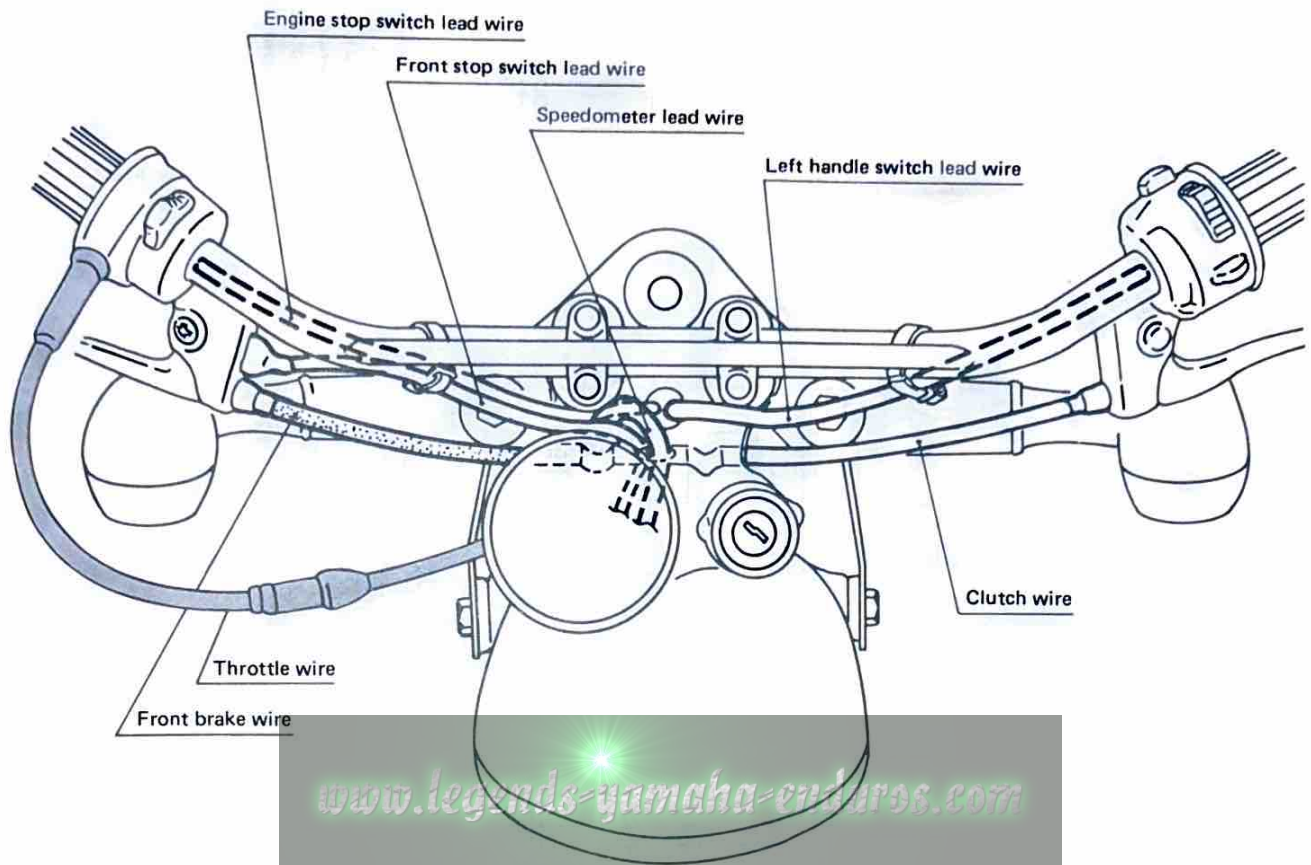
Electrical

On the G model (3J8), the Capacitor discharge Ignition (CDI) system has been employed in place of the conventional contact breaker ignition system and as a result, no ignition timing adjustment is necessary.

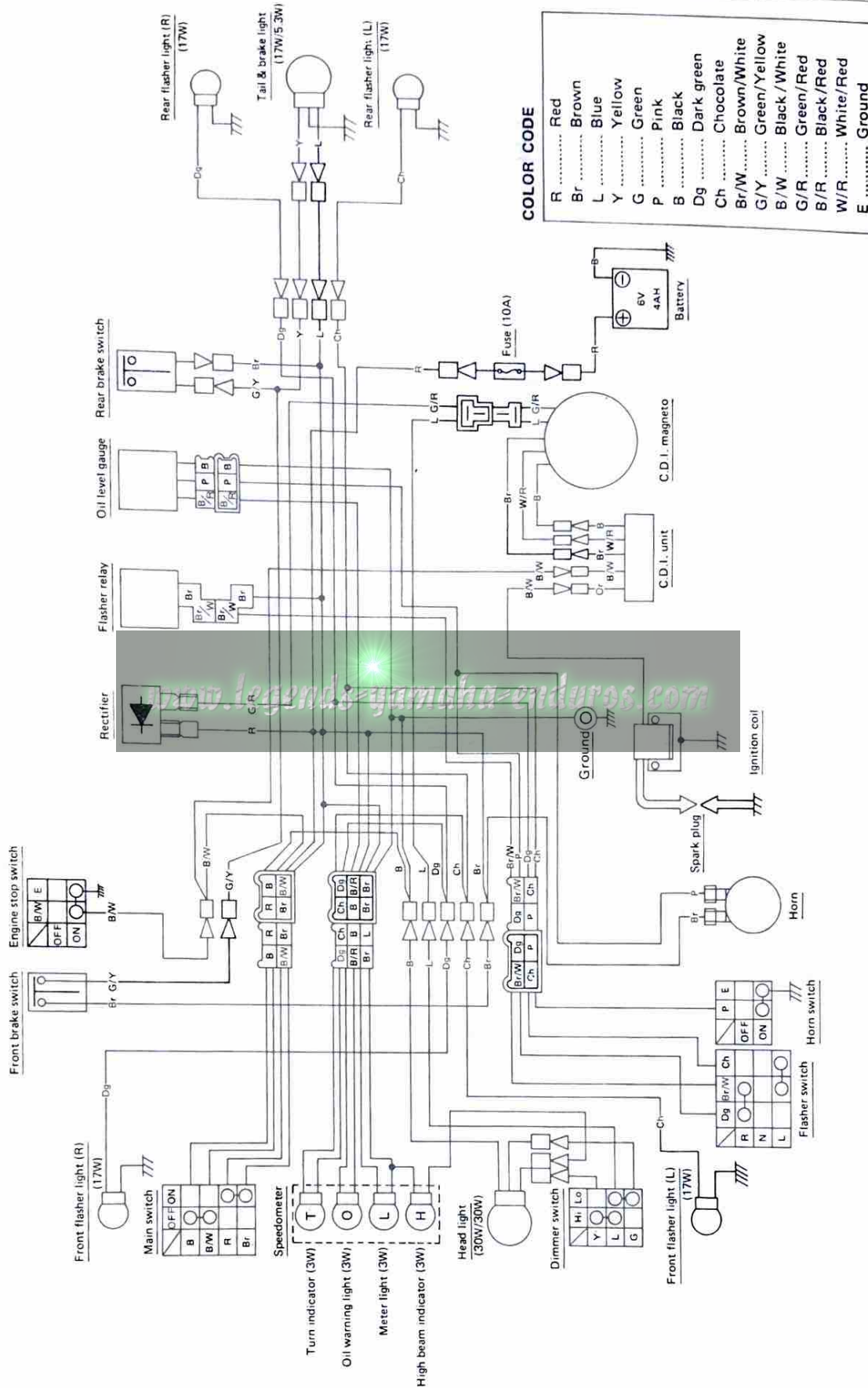
CABLE ROUTING DIAGRAM







CIRCUIT DIAGRAM



www.legends-yamaha-enduros.com



YAMAHA MOTOR CO., LTD.

IWATA, JAPAN

PRINTED IN JAPAN

79.5 - 2.02 x 1

(英)