

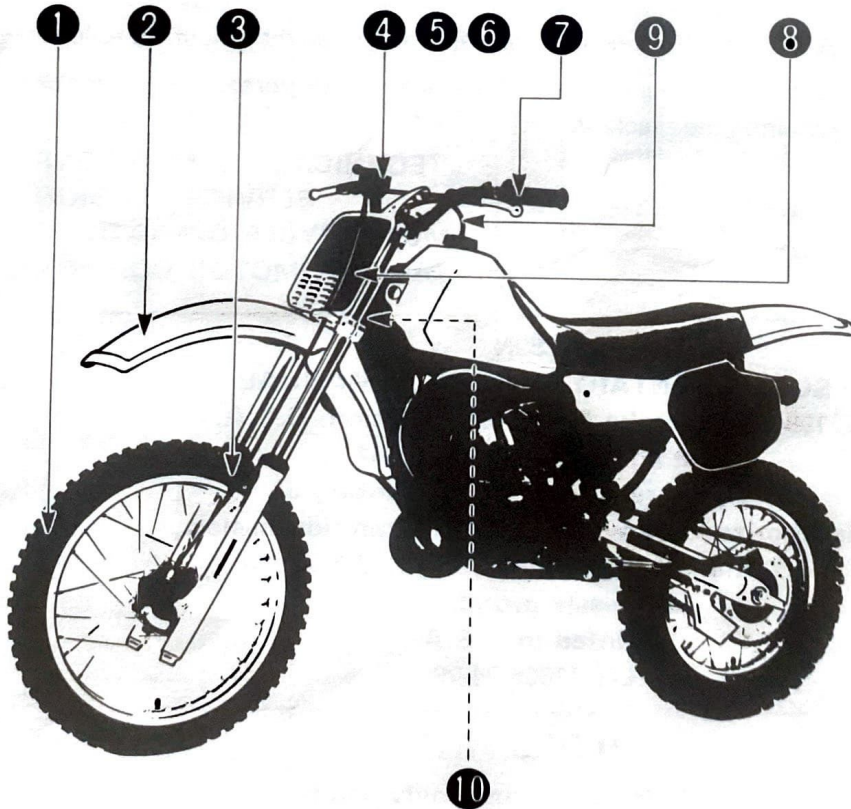


YAMAHA

www.legends-yamaha-enduros.com

YZ80N

SUPPLEMENTARY ASSEMBLY MANUAL



FOREWORD

This Supplementary assembly manual has been prepared to introduce the setup procedures and predelivery service for the YZ80N.

For complete information, it is necessary to use the YZ/IT series Basic assembly manual (LIT-11666-03-31) together with this Supplementary assembly manual.

NOTICE

The service specifications given in this Supplementary assembly manual are based on the model as manufactured. Modifications and significant changes in specifications and/or procedures will be forwarded to Authorized Yamaha Dealers. The procedures below are described in the order that the procedures are carried out correctly and completely. Failure to do so can result in poor performance and possible harm to the machine and/or rider.

CONCERNING CRATE DAMAGE:

Follow the instructions in the Dealer warranty handbook, Procedure section.

Particularly important information is distinguished in this manual by the following notations:

NOTE: A NOTE provides key information to make procedure easier or clearer.

CAUTION:

A CAUTION indicates special procedures that must be followed to avoid damage to the machine.

WARNING:

A WARNING indicates special procedures that must be followed to avoid injury to a machine operator or person inspecting or repairing the machine.

TECHNICAL PUBLICATIONS
SERVICE DIVISION
MOTORCYCLE OPERATIONS
YAMAHA MOTOR CO., LTD.

YZ80N

SUPPLEMENTARY ASSEMBLY MANUAL
©1984 by Yamaha Motor Corporation, U.S.A.
1st Edition, AUGUST 1984

All rights reserved. Any reprinting or
unauthorized use without the written permission
of Yamaha Motor Corporation, U.S.A., is
expressly prohibited.

Printed in U.S.A.

LIT-11666-04-79

www.legendaryyamaha.com

GLOSSARY

(Symbols most commonly used)

- C: The "C" marked parts are contained in the carton box.
- S: The "S" marked parts are fixed inside the crate.
- V: The "V" marked parts are contained in the vinyl bag.
- *: The asterisk (*) parts are temporarily fitted on the motorcycle.

SETUP PROCEDURES

NOTE:

Please read the following chapters in the Basic assembly manual before proceeding to the setup.

CHAPTER 1: INTRODUCTION

CHAPTER 2: SETUP AND PREDELIVERY CHECK

CHAPTER 3: TOOLS AND TORQUE SPECIFICATIONS

CHAPTER 4: CRATES

CHAPTER 5: INSTALLATION PROCEDURES

Parts list

No.	Part name	Q'ty	Locating mark	Remarks
1. Front wheel F.W-G				
1	Front wheel	1	S	
2	Front wheel axle	1	*	d = 12 mm (0.47 in)
3	Plain washer	1	*	d = 12 mm (0.47 in), ℓ = 22 mm (0.87 in)
4	Wheel axle collar	1	V	d = 12 mm (0.47 in)
5	Brake shoe plate assembly	1	S	
6	Plain washer	1	*	d = 12 mm (0.47 in), D = 22 mm (0.87 in)
7	Unit	1	*	d = 12 mm (0.47 in)
2. Front fender F.F-E				
1	Front fender	1	S	
2	Hexagon bolt with spring washer and plain washer	4	V	d = 6 mm (0.24 in), ℓ = 20 mm (0.78 in)
3	Special washer	1	V	
4	Collar	2	V	d = 6 mm (0.24 in)
3. Cable holder C.H-D				
1	Cable holder	2	V	
2	Panhead screw with spring washer	1	V	d = 6 mm (0.24 in), ℓ = 12 mm (0.47 in)
4. Throttle cable T.G-B				
1	Throttle grip	1	*	
2	Panhead screw	2	*	d = 5 mm (0.20 in), ℓ = 10 mm (0.39 in)
5. Handlebar H.B-B				
1	Handlebar	1	S	
2	Flange bolt	2	V	d = 8 mm (0.32 in), ℓ = 30 mm (1.19 in)
3	Handlebar holder	4	V	

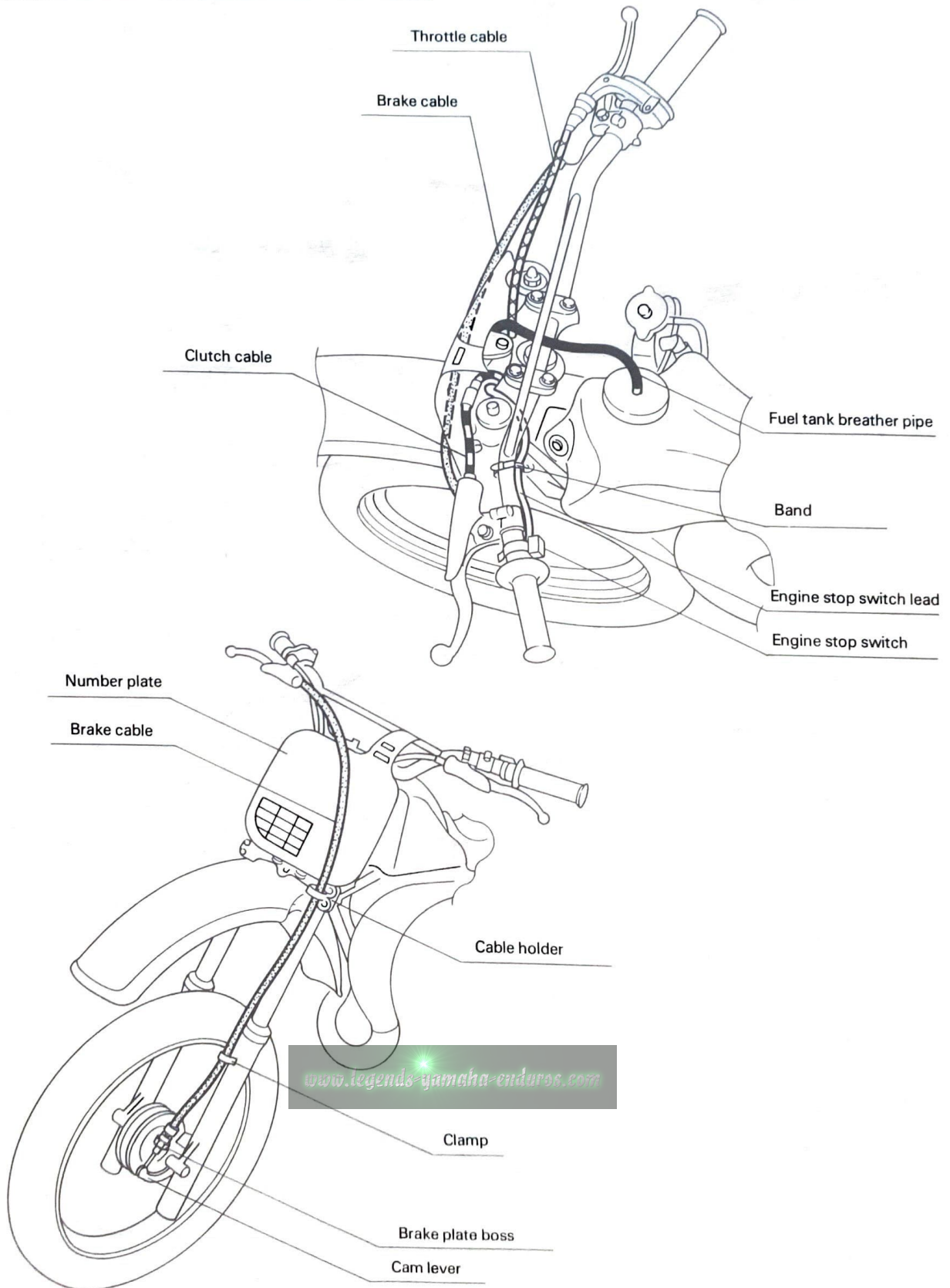
Parts list

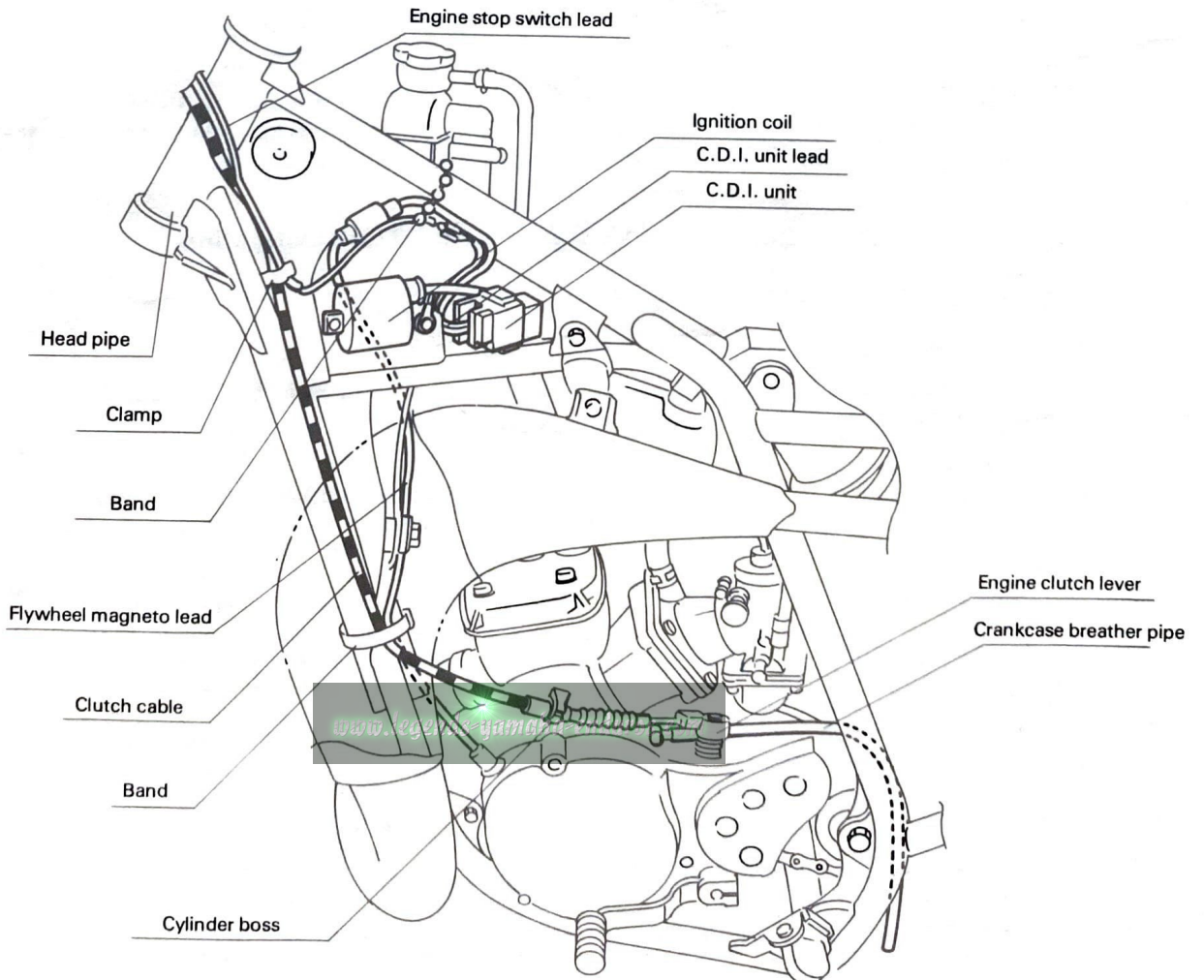
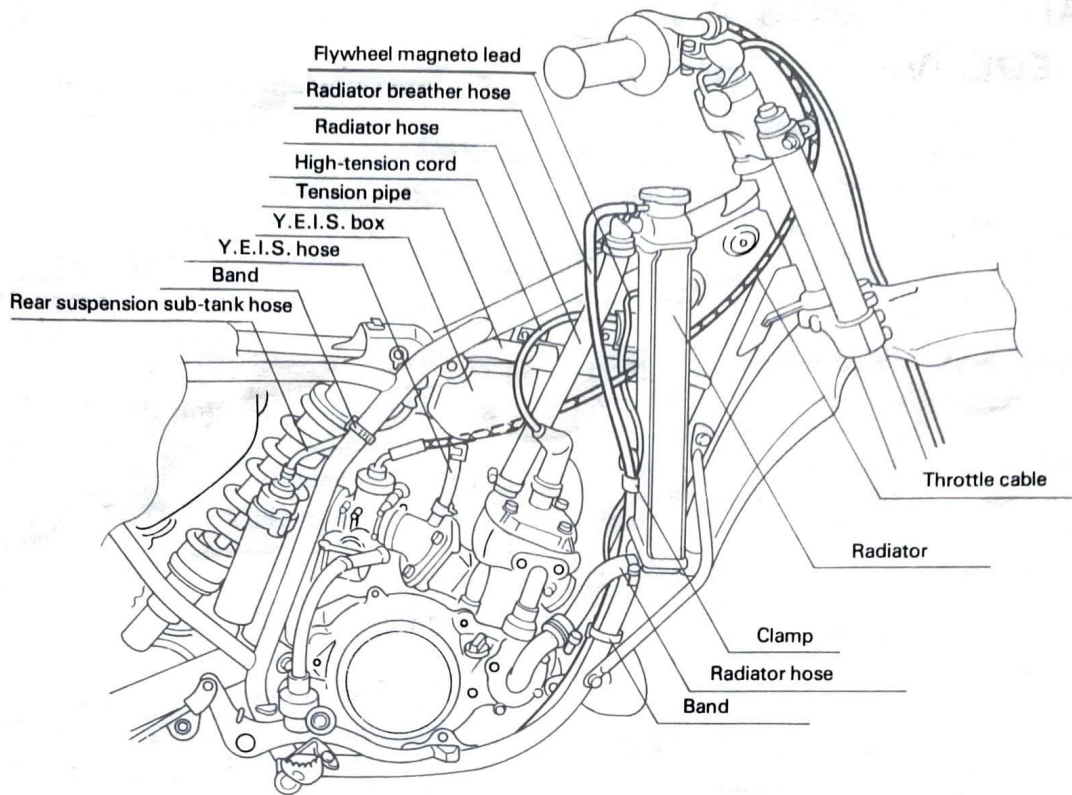
No.	Part name	Q'ty	Locating mark	Remarks
6. Brake and clutch cable B.C-A				
7. Engine stop switch E.S-C				
1	Engine stop switch	1	*	
2	Panhead screw	1	V	d = 3 mm (0.12 in), ℓ = 14 mm (0.55 in)
3	Spring washer	1	V	d = 3 mm (0.12 in)
4	Engine stop switch holder (Upper and lower)	2	V	
5	Handlebar band	1	V	Plastic
8. Number plate N.P-F				
1	Number plate	1	S	
2	Panhead screw with spring washer and plain washer	1	V	d = 6 mm (0.24 in), ℓ = 16 mm (0.62 in)
9. Fuel tank breather pipe F.B-A				
1	Fuel tank breather pipe	1	C	Rubber
10. Radiator cover S.C-K				
1	Spring nut	3	V	d = 5 mm (0.20 in)
2	Plate	1	C	
3	Radiator cover	1	C	
4	Panhead screw with spring washer and plain washer	2	V	d = 5 mm (0.20 in), ℓ = 20 mm (0.98 in)
5	Panhead screw with spring washer and plain washer	1	V	d = 5 mm (0.20 in), ℓ = 15 mm (0.59 in)

CABLE ROUTING

CAUTION:

Proper cable and lead routing is essential to insure safe vehicle operation.





ADJUSTMENTS AND PREDELIVERY SERVICE

NOTE:

Please read the following chapter in the Basic assembly manual before proceeding to the adjustments and predelivery service.

CHAPTER 6: APPENDICES

1. Front brake adjustment F.B-A

Free play: 5~8 mm (0.20~0.31 in)

2. Rear brake pedal position adjustment R.P-A

Brake pedal position:
10 mm (0.39 in)

3. Rear brake adjustment R.B-A

Free play: 20~30 mm (0.8~1.2 in)

4. Clutch adjustment C.A-A

Free play: 2~3 mm (0.08~0.12 in)

5. Throttle cable adjustment T.C-A

Free play: 3~5 mm (0.12~0.20 in)

6. Fuel draining F.D-A

7. Transmission oil level check T.L-A

Recommended oil:

Yamalube 4-cycle oil or
SAE 10W30 type SE motor oil
Oil capacity (Periodic oil change)
0.65 L (0.57 Imp qt, 0.68 US qt)

8. Drive chain tension check D.C-A

Chain deflection:
30~35 mm (1.17~1.37 in)

9. Coolant level check C.L-A

Recommended coolant:

High quality ethylene glycol antifreeze containing corrosion inhibitors for aluminum engine
Coolant capacity:
0.38 L (0.33 Imp qt, 0.40 US qt)
Coolant and water mixed ratio:
1 : 1 (50% water, 50% coolant)

10. Troubleshooting T.S-A

SERVICE DATA

Idling engine speed:	As desired
Spark plug: Type Gap	N-84 (CHAMPION) 0.6~0.7 mm (0.024~0.028 in)
Fuel: Recommended fuel Fuel tank capacity	Premium fuel with an octane rating of at least 90 (Mixing ratio; 24 : 1) 5.0 L (1.1 Imp gal, 1.3 US gal)
Engine oil: Recommended oil, Mixing ratio	Yamalube Racing 2-cycle oil (24 : 1) Castrol R30 (20 : 1) A545 (20 : 1) A747 (20 : 1)
Tire pressure (Cold tire pressure): Front Rear	98 kPa (1.0 kg/cm ² , 14 psi) 98 kPa (1.0 kg/cm ² , 14 psi)

TORQUE SPECIFICATION CHART

Parts to be tightened	Bolt/ Nut size	Tightening torque		
		Nm	m · kg	ft · lb
Engine:				
Spark plug	M14 × 1.25	25	2.5	18.0
Oil drain bolt	M12 × 1.5	20	2.0	14.0
Chassis:				
Engine mounting bolt	M8	40	4.0	29
Handle crown:				
Inner tube	M8	23	2.3	17
Steering shaft	M14	60	6.0	43
Handlebar holder (H.B.-B #1)	M8	27	2.7	19
Front wheel axle (F.W-G #1)	M12	74	7.4	53
Front fender (F.F-E #1)	M6	6	0.6	4.3
Rear wheel axle	M14	85	8.5	61
Rear hub	M8	30	3.0	22
Fuel tank stay	M6	7	0.7	5.1
Fuel tank	M6	7	0.7	5.1
Fuel cock	M6	7	0.7	5.1
Sidestand	M8	20	2.0	14
Sidestand bracket	M10	48	4.8	35
Rear fender	M8	17	1.7	12
Pivot shaft	M12	53	5.3	38
Rear hub stud bolt	M8	25	2.5	18
Rear shock – L arm	M10	32	3.2	23
L arm – Rear arm	M10	32	3.2	23
– Conrod	M10	32	3.2	23
Frame – Conrod	M10	32	3.2	23
Brake cam lever	M6	10	1.0	7.2

OWNER'S TOOL KIT

No.	Part name	Q'ty
1	Owner's tool bag	1
2	Spark plug wrench (19 – 21)	1
3	Spark plug wrench handle	1
4	Special spanner	1
5	Rotot puller	1

www.legends-yamaha-enduros.com

www.legends-yamaha-enduros.com



YAMAHA MOTOR CO., LTD.

IWATA, JAPAN

PRINTED IN U.S.A.