



**YAMAHA**

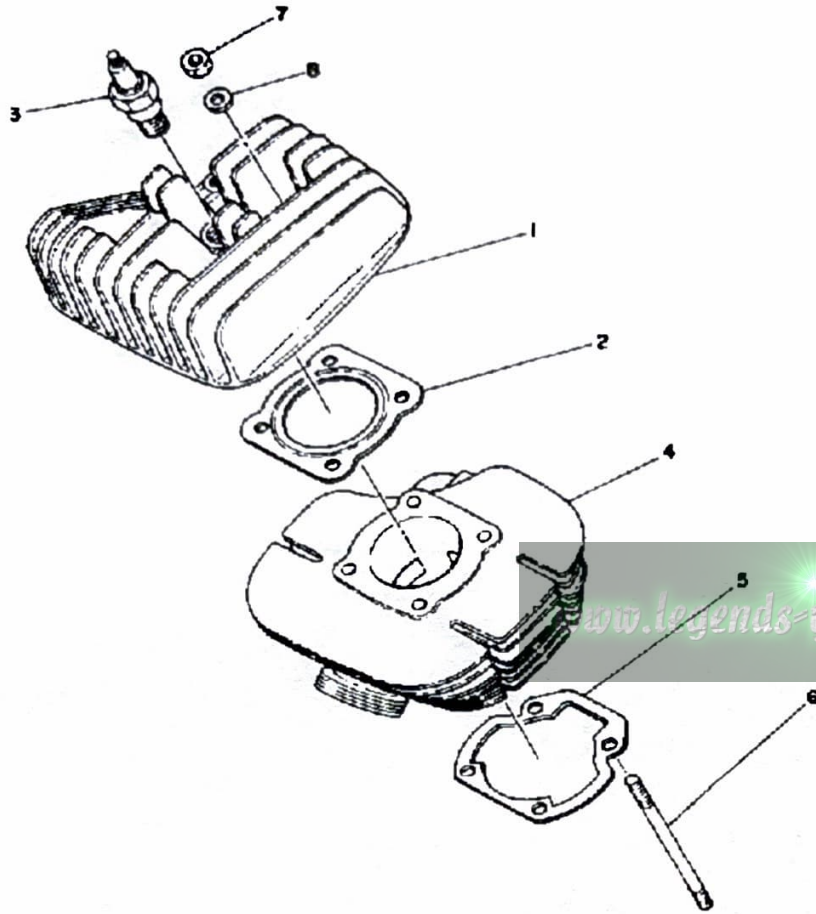
**GENUINE**

**PARTS CATALOGUE**

**MOTORCYCLE**

[www.legends-yamaha-enduros.com](http://www.legends-yamaha-enduros.com)

# CYLINDER HEAD - CYLINDER DT80H -

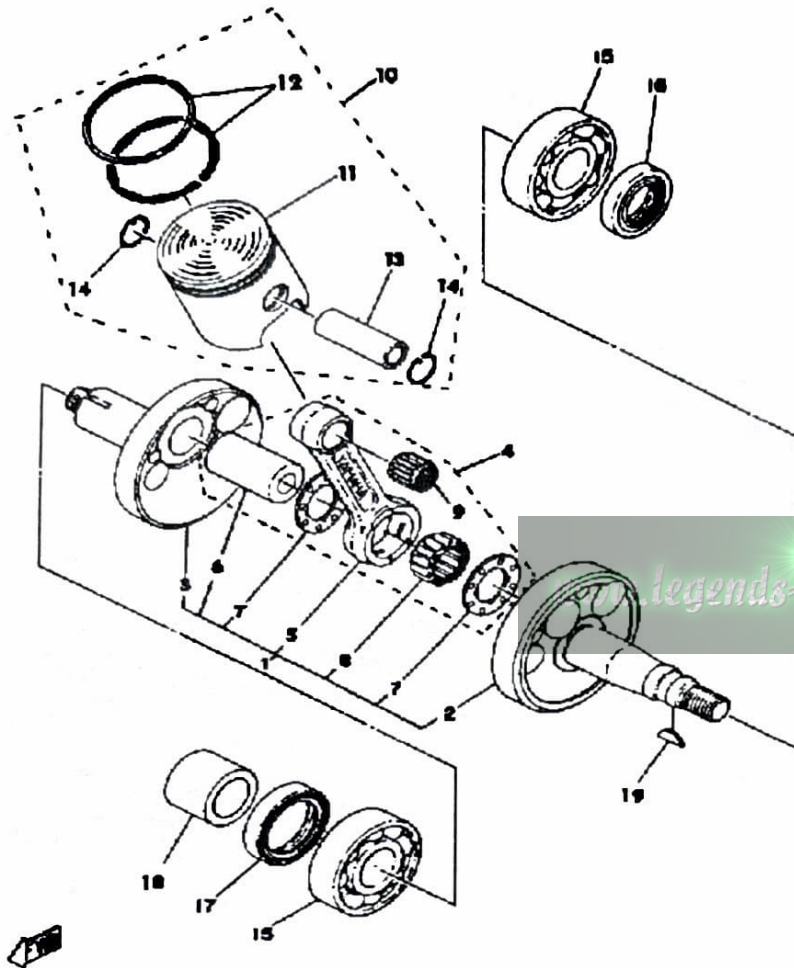


Ref. No.	Part Number	Description	Qty	Remarks
1	3J8-11111-00-00	HEAD, CYLINDER 1 .....	1	
2	1F5-11181-00-00	GASKET, CYLINDER HEAD 1 .	1	
3	NGK-B7HS0-00-00	PLUG, SPARK (NGK B7HS) ...	1	
4	(3J8-11311-00-00)	CYLINDER 1 .....	1	
5	367-11351-00-00	GASKET, CYLINDER .....	1	
6	90116-06026-00	BOLT, STUD .....	4	
7	95380-06600-00	NUT .....	4	
8	92990-06200-00	WASHER .....	4	



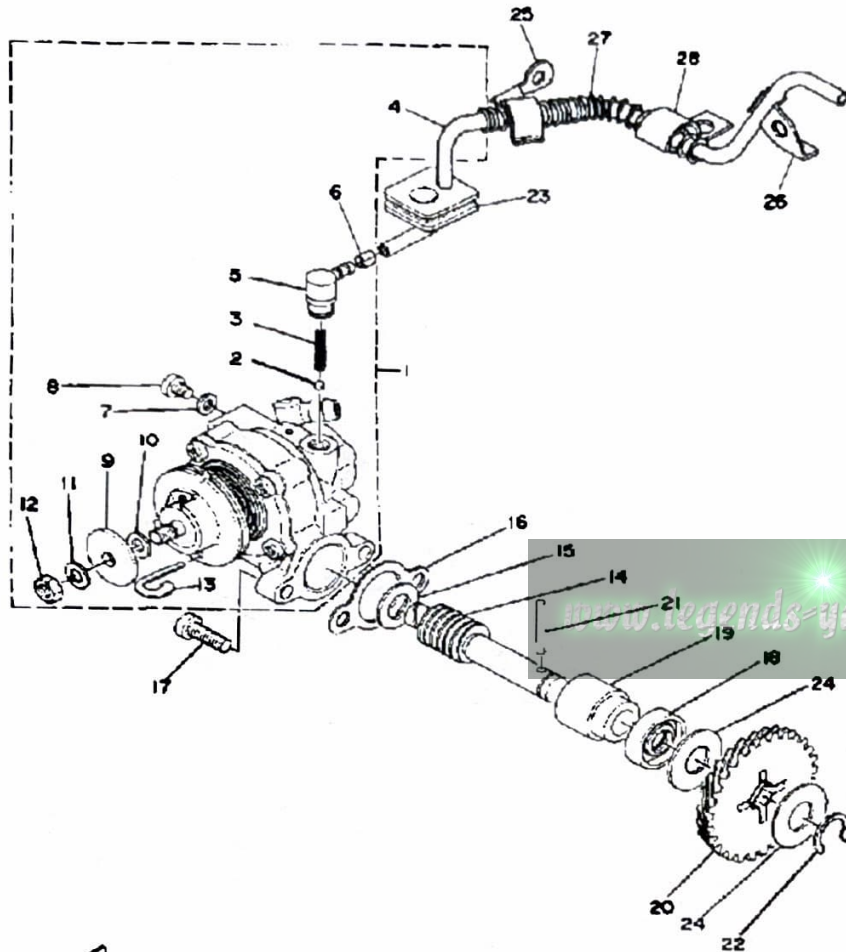
3J8110-2010

# CRANKSHAFT - PISTON DT80H - J - K



Ref. No.	Part Number	Description	Qty	Remarks
1	1K9-11400-00-00	CRANKSHAFT ASSEMBLY ...	1	
2	598-11412-00-00	. CRANK 1 .....	1	
3	(598-11422-00-00)	CRANK 2 .....	1	
4	538-11650-01-00	. CONNECTING ROD ASSEMBLY .....	1	ASSEMBLY
5	3R1-11651-01-00	.. ROD, CONNECTING .....	1	
6	257-11681-00-00	.. PIN, CRANK 1 .....	1	
7	90209-18112-00	.. WASHER, SPEC"L SHAP ..	2	
8	93310-418T0-00	.. BERING, CYLINDRICAL .....	1	
9	93310-11268-00	.. BEARING .....	1	
10	(3J8-11630-00-00)	PISTON KIT STD .....	1	ASSEMBLY
	(3J8-11630-20-00)	PISTON KIT 2ND .....	1	ALT. PRT
	3J8-11635-00-00	PISTON 1 O/S 0.5 .....	1	ALT. PRT
11	3J8-11631-00-96	. PISTON STD .....	1	
	3J8-11635-00-00	. PISTON 1 O/S 0.5 .....	1	ALT. PRT
	3J8-11636-00-00	. PISTON 2 O/S 0.0 .....	1	ALT. PRT
12	2A4-11610-00-00	. PISTON RINGSET STD .....	1	
	2A4-11610-10-00	. PISTON RINGSET 1ST .....	1	ALT. PRT
	2A4-11610-20-00	. PISTON RINGSET 2ND .....	1	
13	527-11633-00-00	. PIN, PISTON .....	1	
14	93450-13022-00	. CIRCLIP .....	2	
15	93306-20458-00	BEARING .....	2	
16	93102-20009-00	OIL SEAL .....	1	
17	93103-28011-00	OIL SEAL .....	1	
	93103-28126-00	OIL SEAL .....	1	
18	90387-205E9-00	COLLAR .....	1	
19	90280-03017-00	KEY, WOODRUFF .....	1	

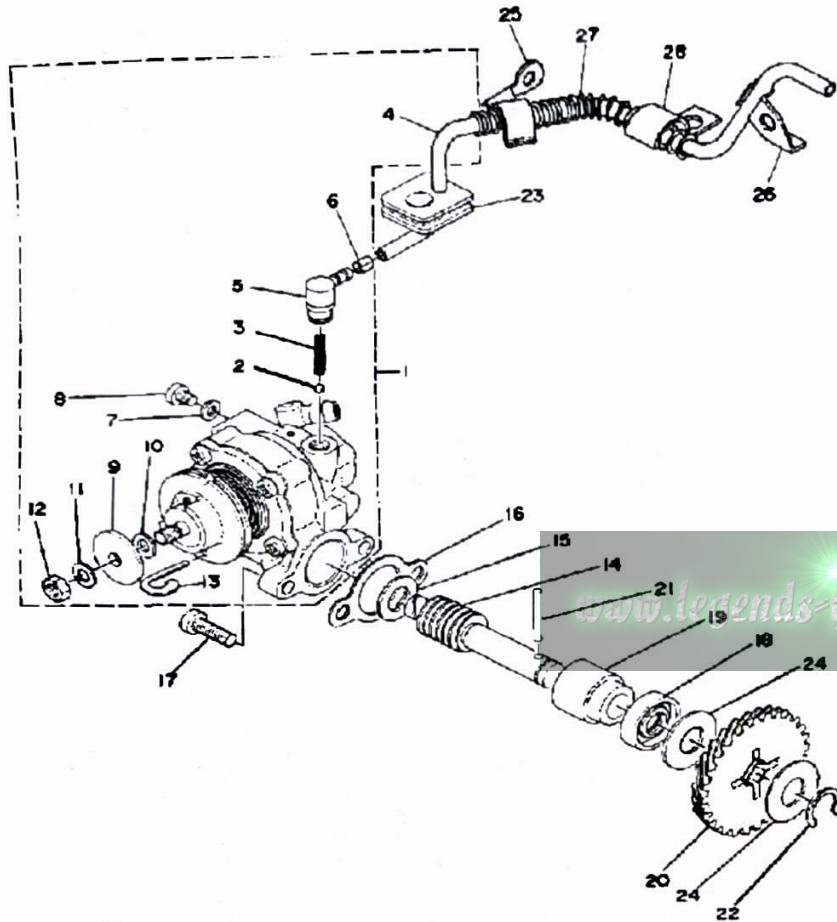
# OIL PUMP DT80H - J - K



Ref. No.	Part Number	Description	Qty	Remarks
1	(1K8-13101-01-00)	OIL PUMP ASSEMBLY	1	
2	93505-32002-00	. BALL	1	
3	90501-02217-00	. SPRING, COMPRESSION	1	
4	90445-05278-00	. HOSE	1	
5	353-13552-01-00	. NOZZLE	1	
6	90468-02033-00	. CLIP	1	
7	90430-04004-00	. GASKET	1	
8	98901-04008-00	. SCREW, BIND	1	
9	137-13138-01-00	. PLATE, ADJUSTING	1	
10	137-13137-00-03	. SHIM (0.3T)	1	U.R.
	137-13137-00-05	. SHIM (0.5T)	1	U.R. (H)
	137-13137-00-10	. SHIM (1.0T)	1	U.R. (H)
11	92990-05100-00	. WASHER, SPRING	1	
12	95380-05600-00	. NUT	1	
13	367-13146-01-00	. CLIP	1	
14	257-13175-00-00	SHAFT, WORM	1	
15	90201-08624-00	WASHER, PLATE	1	
16	3MT-13116-00-00	GASKET, PUMP CASE (8Y0-13116-00)	1	
17	98580-05016-00	SCREW, PAN HEAD	2	
18	93101-10090-00	OIL SEAL	1	
19	1E7-13176-00-00	METAL, WRM SHAF OTR	1	
20	353-13178-00-00	GEAR, PUMP DRIVE	1	
21	93603-22028-00	PIN, DOWEL	1	
22	99001-08600-00	CIRCLIP	1	
23	248-13174-00-00	HOLDER, OIL PIPE	1	
24	90201-105J4-00	WASHER, PLATE (90201-106H1)	2	
25	367-13174-00-00	HOLDER, OIL PIPE	1	

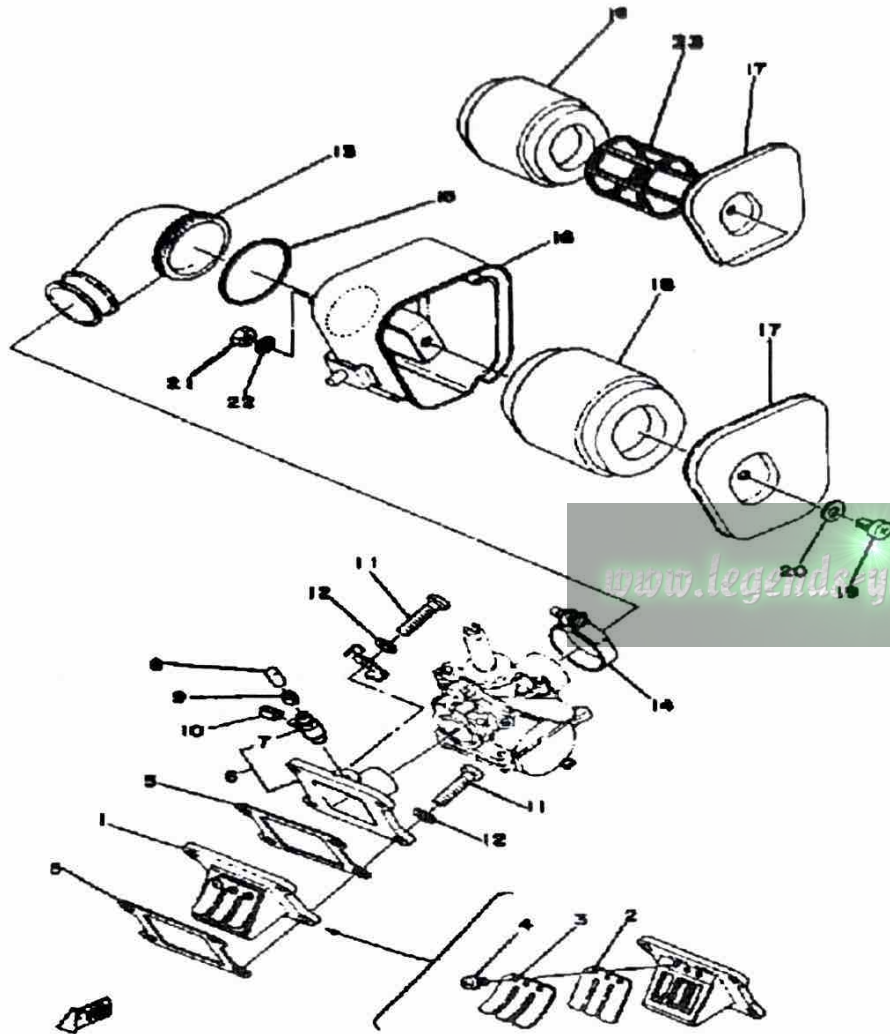
CONTINUED ON NEXT FRAME ►

# OIL PUMP DT80H - J - K



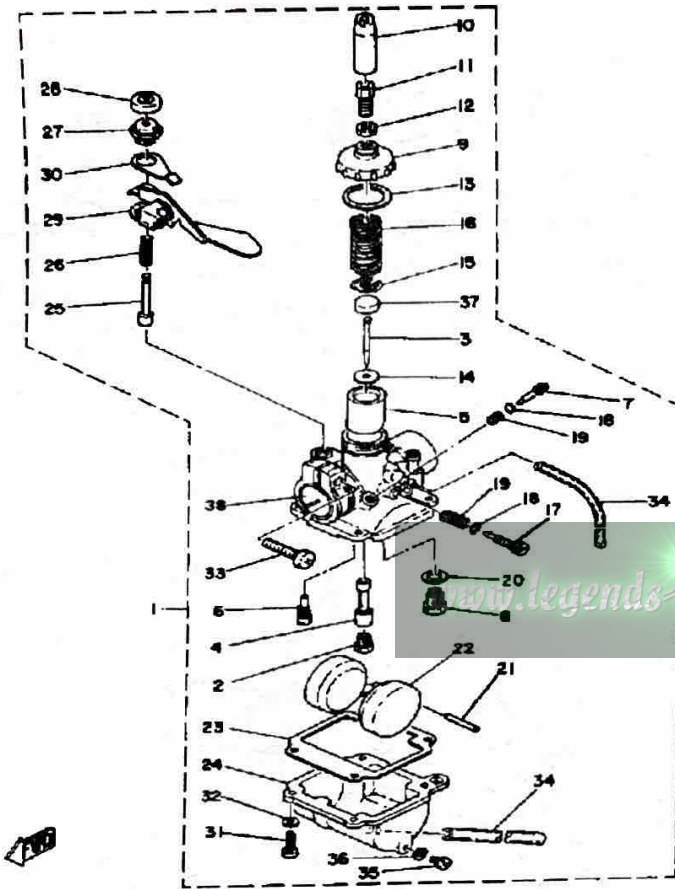
Ref. No.	Part Number	Description	Qty	Remarks
26	(367-15378-00-00)	HOLDER .....	1	
27	90501-06025-00	SPRING, COMPRESSION .....	1	
28	90462-06009-00	CLAMP .....	1	

# INTAKE DT80H - J - K



Ref. No.	Part Number	Description	Qty	Remarks
1	5G1-13610-00-00	REED VALVE ASSEMBLY	1	
2	2A3-13613-00-00	. REED, VALVE	1	
3	5G1-13616-00-00	. STOPPER, REED VALVE	1	
4	98580-03008-00	. SCREW, PAN HEAD	3	
5	3MT-13621-00-00	GASKET, VALVE SEAT	2	
6	(2F4-13565-00-00)	JOINT, CARBURETOR	1	
7	8E7-13552-00-00	. NOZZLE	1	
8	2F4-13587-00-00	CAP, JOINT	1	
9	90468-02033-00	CLIP	1	
10	90468-02033-00	CLIP	1	
11	98511-06025-00	SCREW PAN HEAD (92501-06025)	4	
12	92995-06100-00	WASHER, SPRING	4	
13	367-14453-02-00	JOINT, AIR CLNR 1	1	
14	90460-33087-00	CLAMP, HOSE	1	
15	90506-06075-00	SPRING, TENSION	1	
16	3J8-14411-00-00	CASE, AIR CLEANER 1	1	
17	2A3-14412-00-00	CAP, CLEANER CASE 1	1	
18	367-14451-09-00	ELEMENT, AIR CLNR	1	
19	98580-06010-00	SCREW, PAN HEAD (92503-06010)	1	
20	92990-06200-00	WASHER	1	
21	95380-06600-00	NUT	2	
22	92995-06100-00	WASHER, SPRING	2	
23	(367-14458-01-00)	GUIDE, ELEMENT	1	

# CARBURETOR DT80H - J



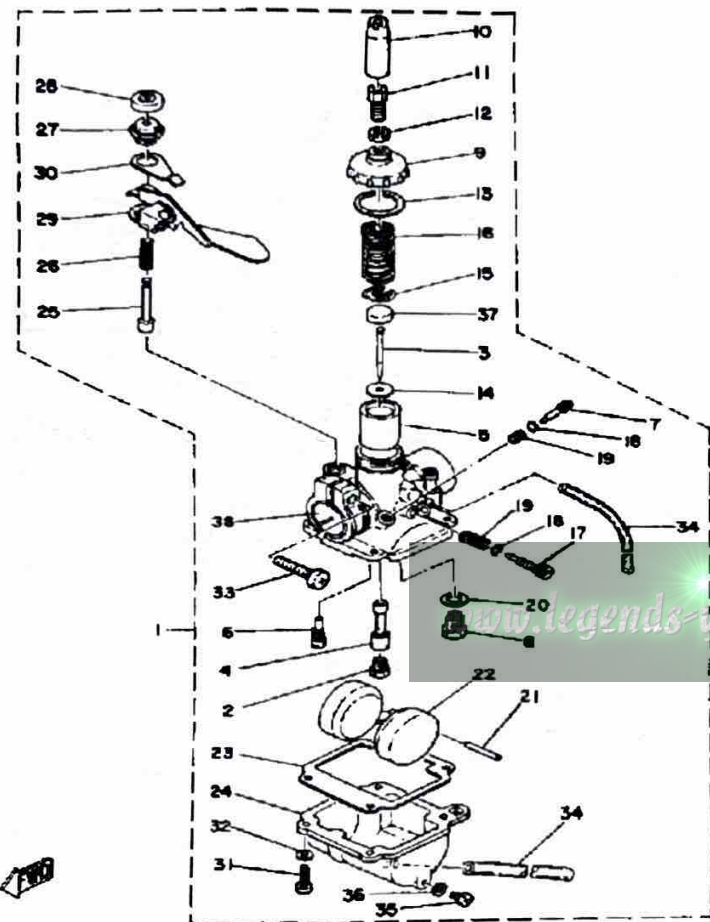
DT80H

CARBURETOR - Mfr. / Type / I.D. Number	Teikei / Y18P-3A / 3J8-60
Main Jet / Pilot Jet	88 / 22
Needle Jet / Jet Needle-Clip Position	2.005 / 3N21 Fixed
Slide Cutaway or Throttle Valve	2.0
Float Level / Fuel Level	22.0mm ± 0.5mm / NA
Idle rpm	1250 ~ 1400 rpm

Ref. No.	Part Number	Description	Qty	Remarks
1	3J8-14301-60-00	CARBURETOR ASSEMBLY 1	1	
2	288-14343-43-00	. JET, MAIN # 6	1	
3	(3J8-14336-00-00)	NEEDLE	1	
4	(3J8-14341-00-00)	NOZZLE, MAIN	1	
5	(3J8-14312-20-00)	VALVE, THROTTLE 1	1	
6	(3J8-14342-16-00)	JET, PILOT # 2	1	
7	(3J8-14323-00-00)	SCREW, AIR ADJUSTING	1	
8	367-14390-20-00	. NEEDLE VALVE ASSEMBLY	1	
9	367-14168-00-00	. CAP, MIXING CHAMBER	1	
10	367-14169-00-00	. CAP	1	
11	288-14124-00-00	. SCREW, CABLE ADJUSTING	1	
12	288-14161-00-00	. NUT, CABLE ADJUSTING	1	
13	367-14126-00-00	. GASKET	1	
14	3J8-14339-00-00	. SUPPORTER, NEEDLE	1	
15	(3J8-14136-00-00)	SEAT, SPRING	1	
16	367-14331-00-00	. SPRING, THRTL VALVE	1	
17	3J8-14321-00-00	. SCREW, THROTTLE	1	
18	1E7-14147-00-00	. O-RING	2	
19	288-14334-00-00	. SPRING, AIR ADJUSTING	2	
20	367-14195-00-00	. GASKET	1	
21	367-14386-00-00	. PIN, FLOAT	1	
22	367-14385-00-00	. FLOAT	1	
23	4U1-14384-00-00	. GSKT, FLOAT CHAMBER	1	
24	(3J8-14381-28-00)	BODY, FLOAT CHAMBER	1	
25	367-14371-00-00	. PLUNGER, STARTER	1	
26	367-14335-00-00	. SPRING, PLUNGER	1	
27	367-14374-00-00	. CAP, PLUNGER	1	
28	(367-14373-00-00)	COVER, PLUNGER CAP	1	
29	367-14375-01-00	. LEVER, STARTER	1	

CONTINUED ON NEXT FRAME ►

# CARBURETOR DT80H - J



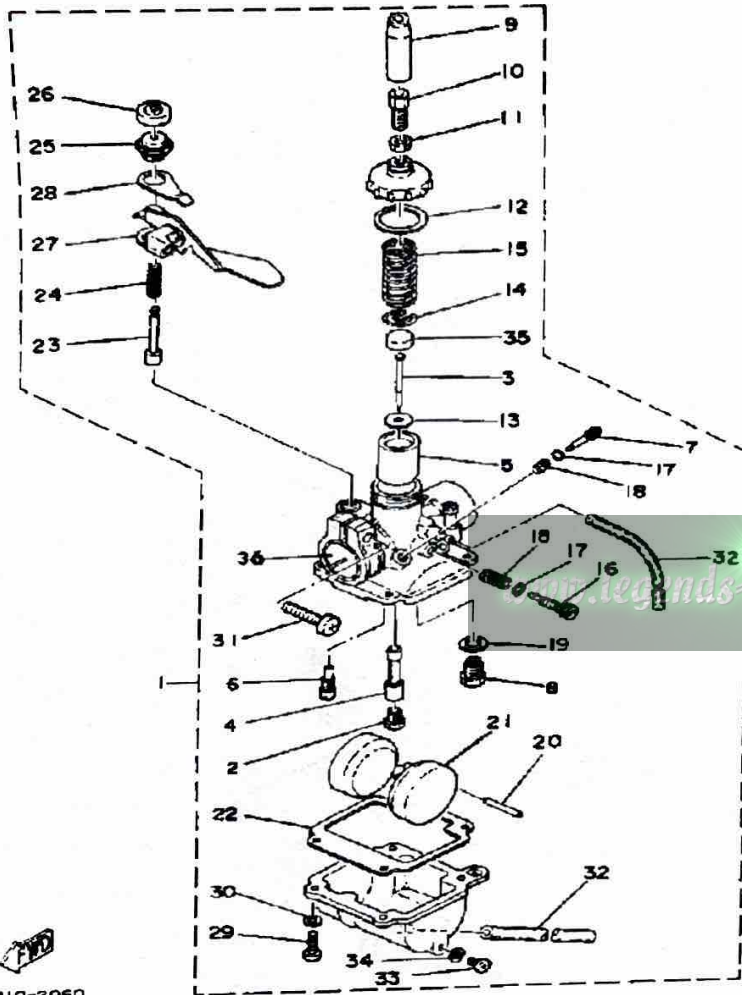
Ref. No.	Part Number	Description	Qty	Remarks
30	367-14377-00-00	. STOPPER .....	1	
31	98511-04012-00	. SCREW, PAN HEAD .....	4	
32	92901-04100-00	. WASHER, SPRING .....	4	
33	98511-06025-00	. SCREW PAN HEAD (92501-06025) .....	1	
34	367-14396-00-00	. PIPE .....	2	
35	3J8-14324-00-00	. SCREW, FLAT HEAD .....	1	
36	6A1-14398-00-00	. GASKET .....	1	
37	(3J8-14372-00-00)	COVER, RECEVE .....	1	
38	2A3-14359-00-00	GASKET .....	1	

[www.legends-yamaha-enduros.com](http://www.legends-yamaha-enduros.com)

## DT80H

CARBURETOR - Mfr. / Type / I.D. Number	Teikei / Y18P-3A / 3J8-60
Main Jet / Pilot Jet	88 / 32
Needle Jet / Jet Needle-Clip Position	2.095 / 3N21 Fixed
Slide Cutaway or Throttle Valve	2.0
Float Level / Fuel Level	22.0mm ± 0.5mm / NA
Idle rpm	1250 ~ 1400 rpm

# CARBURETOR DT80K

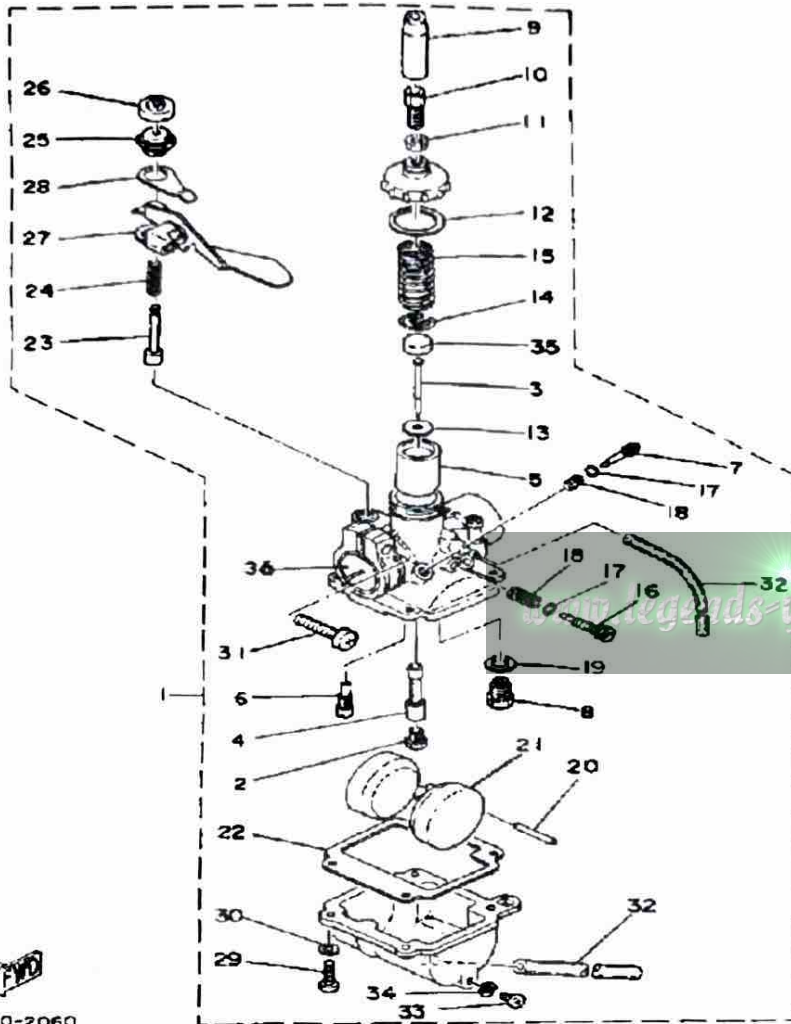


3J8110-2060

Ref. No.	Part Number	Description	Qty	Remarks
1	3J8-14301-60-00	CARBURETOR ASSEMBLY 1	1	
2	288-14343-43-00	. JET, MAIN # 6	1	
3	(3J8-14336-00-00)	NEEDLE	1	
4	(3J8-14341-00-00)	NOZZLE, MAIN	1	
5	(3J8-14312-20-00)	VALVE, THROTTLE 1	1	
6	(3J8-14342-16-00)	JET, PILOT # 2	1	
7	(3J8-14323-00-00)	SCREW, AIR ADJUSTING	1	
8	367-14390-20-00	. NEEDLE VALVE ASSEMBLY	1	
9	367-14169-00-00	. CAP	1	
10	288-14124-00-00	. SCREW, CABLE ADJUSTING	1	
11	288-14161-00-00	. NUT, CABLE ADJUSTING	1	
12	367-14126-00-00	. GASKET	1	
13	3J8-14339-00-00	. SUPPORTER, NEEDLE	1	
14	(3J8-14136-00-00)	SEAT, SPRING	1	
15	367-14331-00-00	. SPRING, THRTL VALVE	1	
16	3J8-14321-00-00	SCREW, THROTTLE	1	
17	1E7-14147-00-00	. O-RING	2	
18	288-14334-00-00	. SPRING, AIR ADJUSTING	2	
19	367-14195-00-00	. GASKET	1	
20	367-14386-00-00	. PIN, FLOAT	1	
21	367-14385-00-00	. FLOAT	1	
22	4U1-14384-00-00	. GSKT, FLOAT CHAMBER	1	
23	367-14371-00-00	. PLUNGER, STARTER	1	
24	367-14335-00-00	. SPRING, PLUNGER	1	
25	367-14374-00-00	. CAP, PLUNGER	1	
26	(367-14373-00-00)	COVER, PLUNGER CAP	1	
27	367-14375-01-00	. LEVER, STARTER	1	
28	367-14377-00-00	. STOPPER	1	
29	98511-04012-00	. SCREW, PAN HEAD	4	

CONTINUED ON NEXT FRAME ►

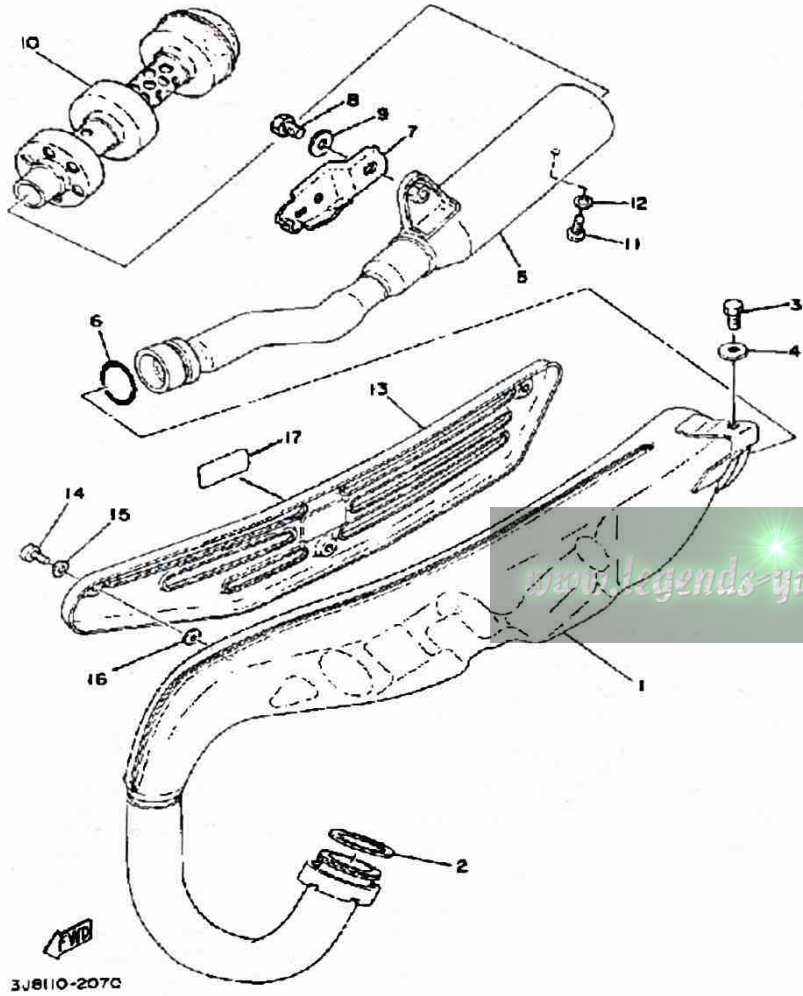
# CARBURETOR DT80K



Ref. No.	Part Number	Description	Qty	Remarks
30	92901-04100-00	WASHER, SPRING	4	
31	98511-06025-00	SCREW PAN HEAD (92501-06025)	1	
32	367-14396-00-00	PIPE	2	
33	3J8-14324-00-00	SCREW, FLAT HEAD	1	
34	6A1-14398-00-00	GASKET	1	
35	(3J8-14372-00-00)	COVER, RECEIVE	1	
36	2A3-14359-00-00	GASKET	1	

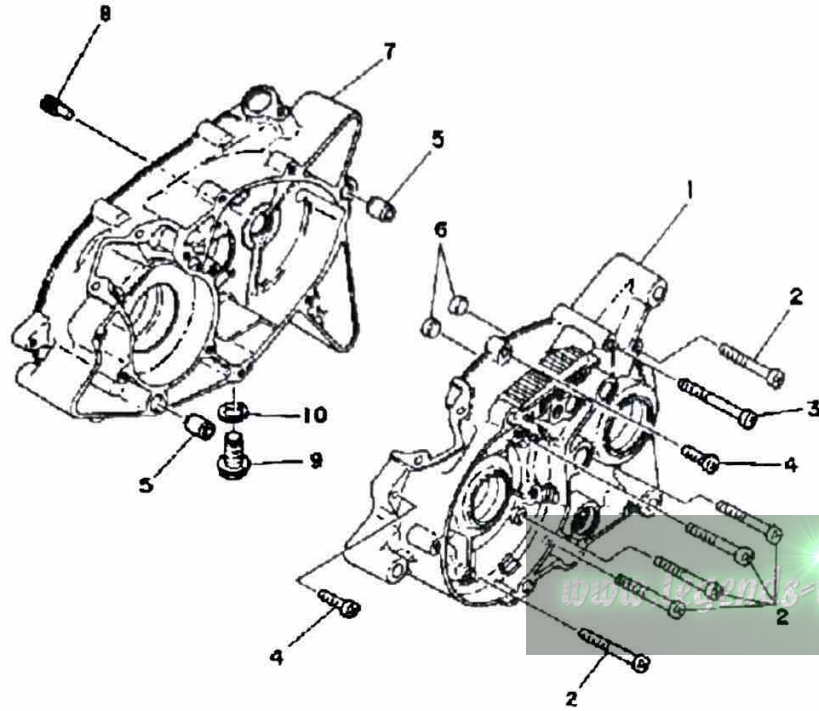
3J8110-2060

# EXHAUST DT80H - J - K



Ref. No.	Part Number	Description	Qty	Remarks
1	(3J8-14610-00-00)	EXHAUST PIPE ASSEMBLY L	1	
2	132-14613-00-00	GASKET, EXST PIPE	1	
3	97313-08018-00	BOLT, HEXAGON (97301-08016)	1	
4	92901-08600-00	WASHER	1	
5	3J8-14753-00-00	SILENCER, EXHAUST	1	
6	93210-27250-00	O-RING	1	
7	2A4-14771-00-00	STAY, MUFFLER 1	1	
8	97313-08018-00	BOLT, HEXAGON (97301-08016)	1	
9	92901-08600-00	WASHER	1	
10	2F4-14752-00-00	PIPE, OUTLET	1	
11	98580-06010-00	SCREW, PAN HEAD (92503-06010)	1	
12	92995-06100-00	WASHER, SPRING	1	
13	(2A4-14718-00-26)	PROTECTOR, MUFF 1	1	COMP. YEL
	(2A4-14718-00-E1)	PROTECTOR, MUFF 1	1	CHAPPY RED
	(2A4-14718-00-G8)	PROTECTOR, MUFF 1	1	SKY BLUE
14	98903-06010-00	SCREW, BIND	3	
15	90202-05187-00	WASHER, PLATE	3	
16	90202-05005-00	WASHER, PLATE (218-14766-10)	3	
17	3J8-21781-10-00	EMBLEM 1	1	

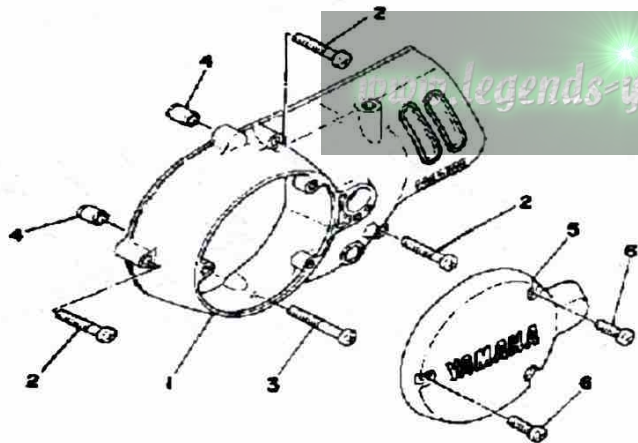
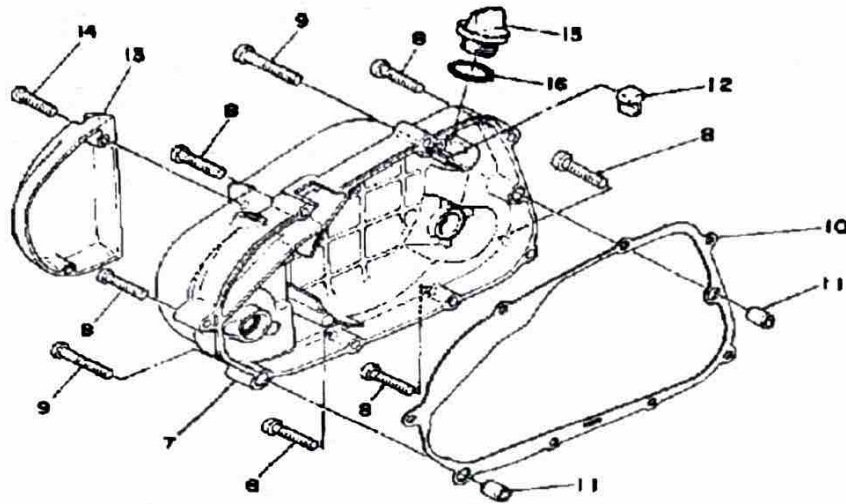
# CRANKCASE DT80H - J - K



Ref. No.	Part Number	Description	Qty	Remarks
1	(374-15111-00-00)	CRANKCASE 1 .....	1	
2	98580-06550-00	SCREW PAN HEAD (92503-06050) .....	8	
3	98580-06055-00	SCREW, pan head (92501-06065-00) .....	1	
4	98511-06025-00	SCREW PAN HEAD (92501-06025) .....	2	
5	99510-12016-00	PIN, DOWEL .....	2	
6	90334-12009-00	PLUG, STRAIGHT .....	2	
7	374-15121-02-00	CRANKCASE 2 .....	1	
8	492-15387-00-00	STOPPER .....	1	
9	90340-12005-00	PLUG, DRAIN .....	1	
10	90430-12207-00	GASKET .....	1	

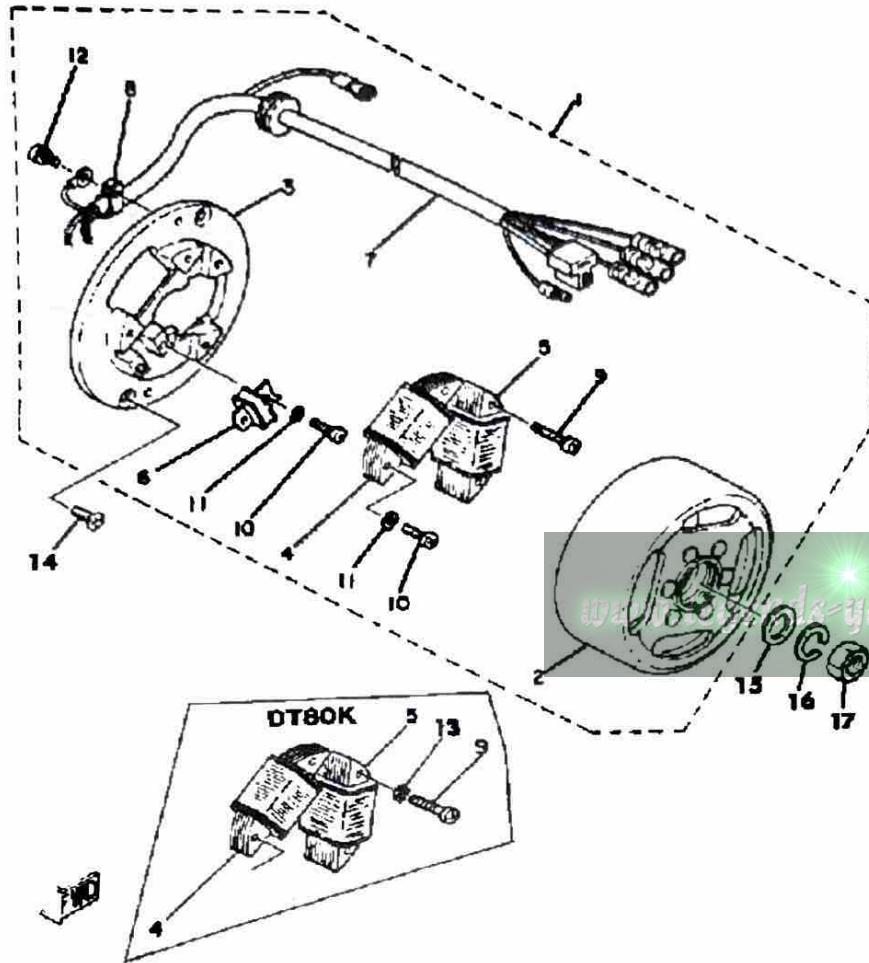


# CRANKCASE COVER DT80H - J - K



Ref. No.	Part Number	Description	Qty	Remarks
1	353-15411-00-Y4	COVER, CRANKCASE L (353-15411-00-Y4)	1	METALLIC SILVR
2	98580-06030-00	SCREW PAN HEAD	3	
3	98580-06545-00	SCREW PAN HEAD (92503-06045)	1	
4	99530-10014-00	PIN, DOWEL	2	
5	353-15415-00-Y4	COVER, GENERATOR	1	METALLIC SILVR
6	98580-06020-00	SCREW	3	
7	353-15421-00-00	COVER, CRANKCASE R	1	METALLIC SILVR
8	98580-06030-00	SCREW PAN HEAD	7	
9	98580-06040-00	SCREW, pan head (92501-06040-00)	2	
10	3MT-15451-00-00	GASKET, CRCS COVER (353-15451-00)	1	
11	99530-10014-00	PIN, DOWEL	2	
12	353-15437-02-00	SCRAPER, OIL	1	
13	353-15416-00-00	COVER, OIL PUMP	1	METALLIC SILVR
14	98511-06025-00	SCREW PAN HEAD (92501-06025)	2	
15	1RG-15363-00-00	PLUG, OIL	1	
16	93210-21190-00	O-RING	1	

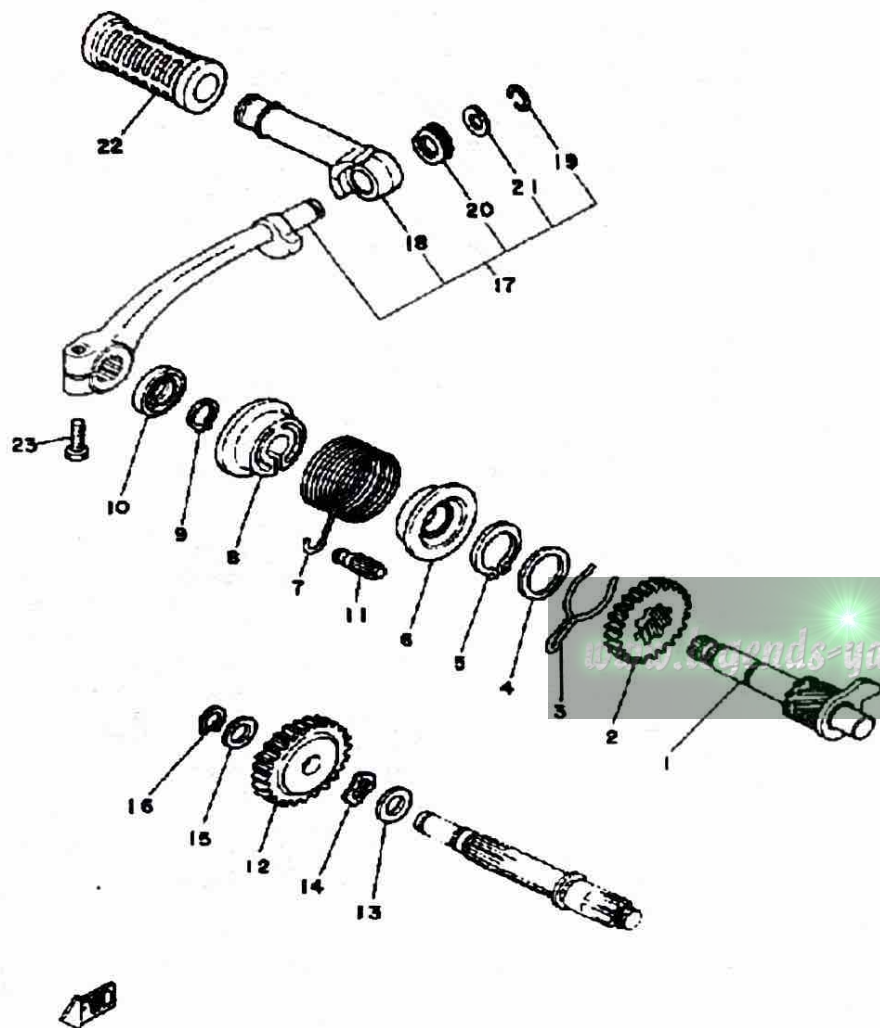
# C - D - I MAGNETO



Ref. No.	Part Number	Description	Qty	Remarks
1	3J8-85500-21-00	CDI MAGNETO ASSEMBLY	1	
2	(3J8-85550-20-00)	ROTOR ASSEMBLY	1	
3	(3J8-85509-20-00)	BASE, MAGNETO	1	
4	3J8-85512-20-00	. COIL SOURCE 2	1	
5	3A3-85513-20-00	. COIL, LIGHTING 1	1	
6	3A3-85580-20-00	. COIL, PULSER	1	
7	(3J8-85515-20-00)	LEAD WIRE ASSEMBLY	1	
	(3J8-85515-21-00)	LEAD WIRE ASSEMBLY	1	
8	104-81328-20-00	. CLAMP	1	
9	97602-04125-00	. SCREW, PN/HD.W/WSHR (4-25)	2	
	98511-04025-00	. SCREW, PAN HEAD	2	
10	98503-04014-00	. SCREW, PAN HEAD	3	
11	92901-04100-00	. WASHER, SPRING	3	
12	97601-04106-00	. SCREW, PN/HD.W/WSHR	1	
13	92901-04100-00	WASHER, SPRING	1	
14	98701-05016-00	SCREW, FLAT HEAD	2	
	98701-05016-00	SCREW, FLAT HEAD	2	
15	90201-12535-00	WASHER, PLATE	1	
16	92901-12100-00	WASHER, SPRING	1	
17	90170-12175-00	NUT	1	

2

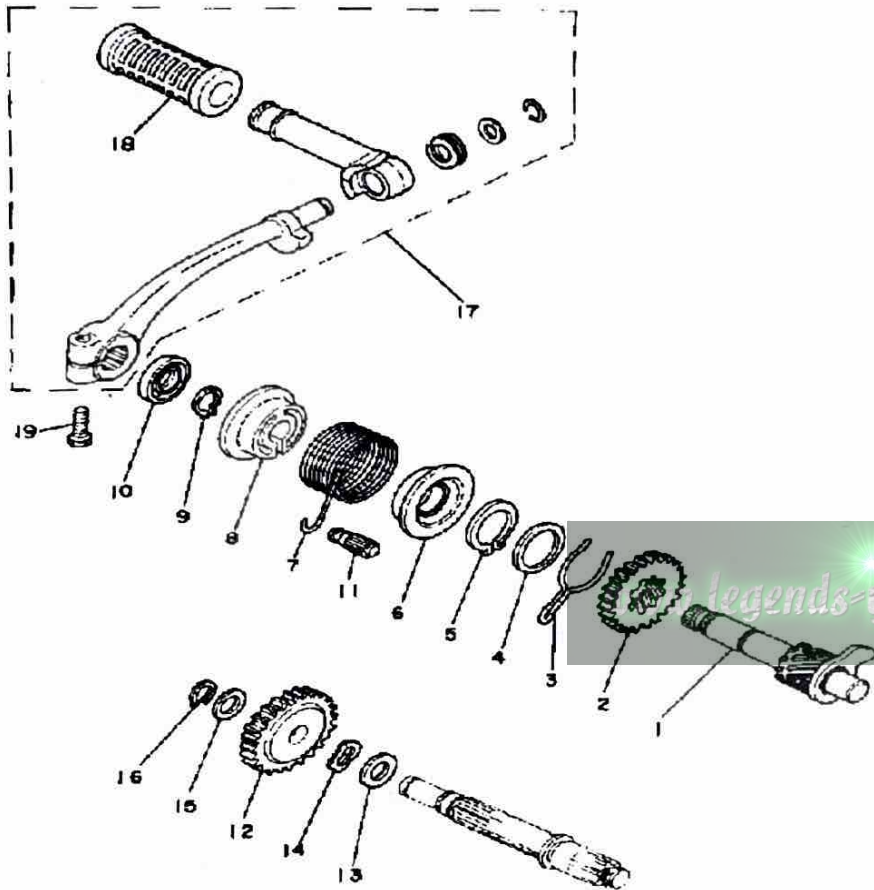
# STARTER DT80H - J



Ref. No.	Part Number	Description	Qty	Remarks
1	353-15660-01-00	KICK AXLE ASSEMBLY	1	
2	353-15641-00-00	GEAR, KICK	1	
3	90468-26038-00	CLIP	1	
4	90201-253K0-00	WASHER, PLATE (T=1.0)	1	
5	93410-25017-00	CIRCLIP	1	
6	132-15664-01-00	GUIDE, SPRING	1	
7	90508-26136-00	SPRING, TORSION	1	
8	132-15676-01-00	COVER, SPRING	1	
9	99009-15400-00	CIRCLIP	1	
10	93109-15001-00	OIL SEAL	1	
11	248-15668-00-00	STOPPER	1	
12	353-15651-00-00	GEAR, KICK IDLE	1	
13	90201-13202-00	WASHER, PLATE	1	
14	90206-15021-00	WASHER, WAVE	1	
15	90201-12M34-00	WASHER, PLATE	1	
16	99009-12400-00	CIRCLIP	1	
17	3AY-15620-00-00	KICK CRANK ASSEMBLY	1	UNI CHROME
18	(214-15612-09-00)	LEVER, KICK	1	
19	93440-10028-00	CIRCLIP, OUTER (132-15617-00)	1	
20	90504-18031-00	SPRING, COMPRESSION (132-15625-01)	1	
21	90209-10108-00	WASHER, SPEC'L SHAP	1	
22	156-15618-01-00	COVER, KICK LEVER	1	
23	97011-06025-00	BOLT (97001-06025)	1	

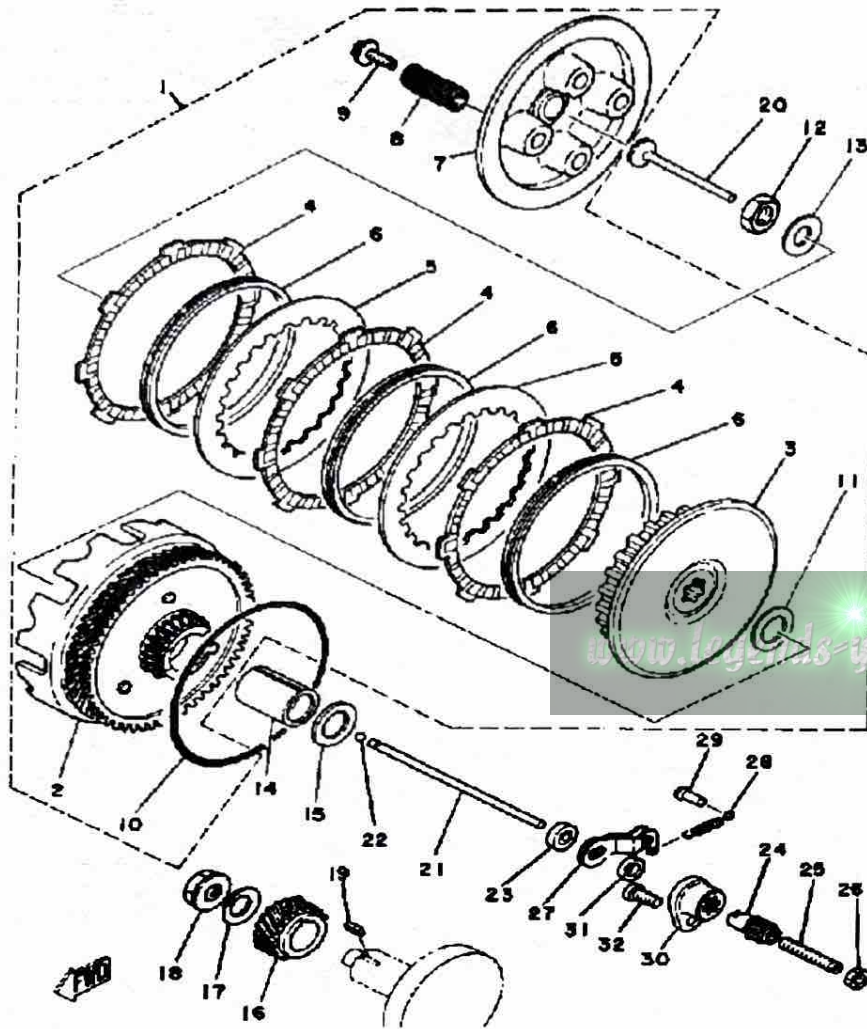
# STARTER DT80K

Ref. No.	Part Number	Description	Qty	Remarks
1	353-15660-01-00	KICK AXLE ASSEMBLY	1	
2	353-15641-00-00	GEAR, KICK	1	
3	90468-26038-00	CLIP	1	
4	90201-253K0-00	WASHER, PLATE (T=1.0)	1	
5	93410-25017-00	CIRCLIP	1	
6	132-15664-01-00	GUIDE, SPRING	1	
7	90508-26136-00	SPRING, TORSION	1	
8	132-15676-01-00	COVER, SPRING	1	
9	99009-15400-00	CIRCLIP	1	
10	93109-15001-00	OIL SEAL	1	
11	248-15668-00-00	STOPPER	1	
12	353-15651-00-00	GEAR, KICK IDLE	1	
13	90201-13202-00	WASHER, PLATE	1	
14	90206-15021-00	WASHER, WAVE	1	
15	90201-12M34-00	WASHER, PLATE	1	
16	99009-12400-00	CIRCLIP	1	
17	3AY-15620-00-00	KICK CRANK ASSEMBLY	1	
18	156-15618-01-00	COVER, KICK LEVER	1	
19	97011-06025-00	BOLT (97001-06025)	1	



SJ6110-2100

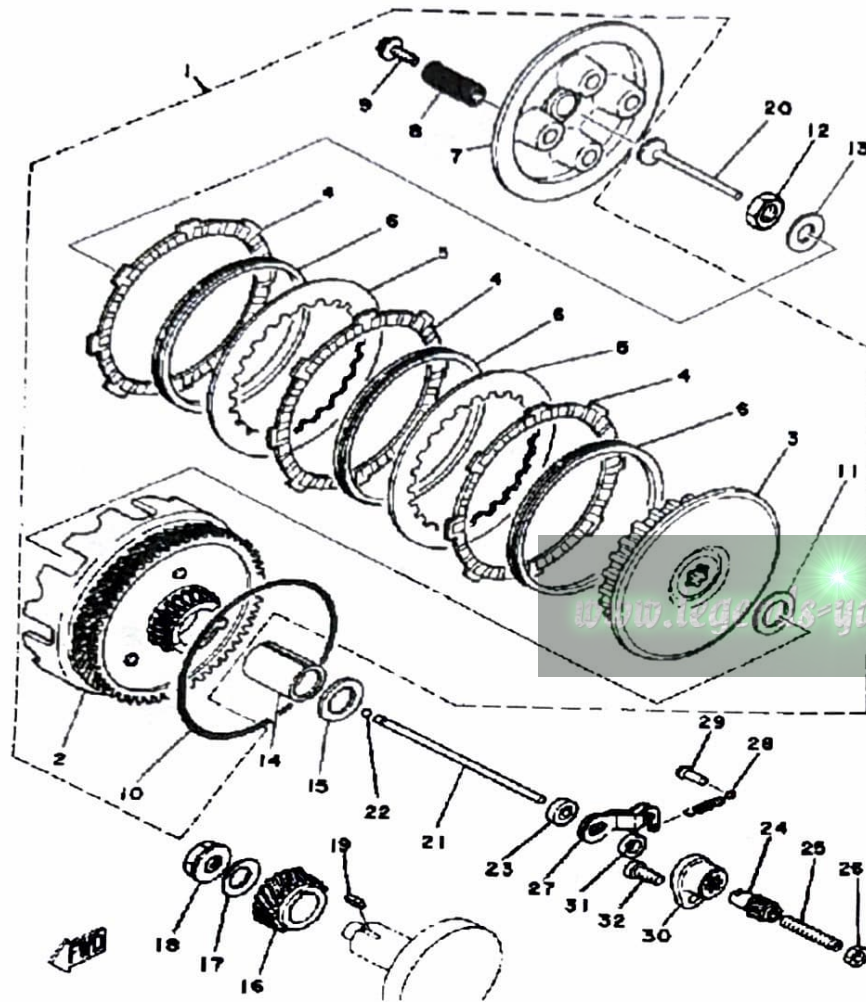
# CLUTCH DT80H - J - K



Ref. No.	Part Number	Description	Qty	Remarks
1	(2A3-16301-00-00)	CLUTCH ASSEMBLY .....	1	
2	1T0-16150-01-00	. PRI.DRVN.GEAR COMP. (68T) (2A3-16150-00) .....	1	
3	353-16371-00-00	. BOSS, CLUTCH .....	1	
4	131-16321-00-00	. PLATE, FRICTION .....	3	
5	257-16324-00-00	. PLATE, CLUTCH 1 .....	2	
6	131-16367-00-00	. RING, CUSHION .....	3	
7	353-16351-00-00	. PLATE, PRESSURE 1 .....	1	
8	90501-20125-00	. SPRING, COMPRESSION .....	4	
9	90119-05001-00	. BOLT, WITH WASHER .....	4	
10	93210-98202-00	. O-RING .....	1	
11	122-16164-00-00	. PLATE, THRUST 2 .....	1	
12	90170-12060-00	NUT .....	1	
13	90208-12015-00	WASHER, CONICAL SPRING ..	1	
14	90560-17123-00	SPACER .....	1	
15	122-16164-00-00	PLATE, THRUST 2 .....	1	
16	353-16111-01-00	GEAR, PRI DRIVE .....	1	
17	90208-12015-00	WASHER, CONICAL SPRING ..	1	
18	90179-12244-00	NUT, SPEC'L SHAPE .....	1	
19	90282-05005-00	KEY, STRAIGHT .....	1	
20	137-16356-00-00	ROD, PUSH 1 .....	1	
21	353-16357-00-00	ROD, PUSH 2 .....	1	
22	93503-16010-00	BALL .....	1	
23	93102-04382-00	OIL SEAL, SD-TYPE (257-153879-00) .....	1	
24	241-16341-01-00	SCREW, PUSH .....	1	
25	90113-06013-00	BOLT, SET .....	1	
26	95380-06700-00	NUT .....	1	
27	451-16342-00-00	LEVER, PUSH .....	1	

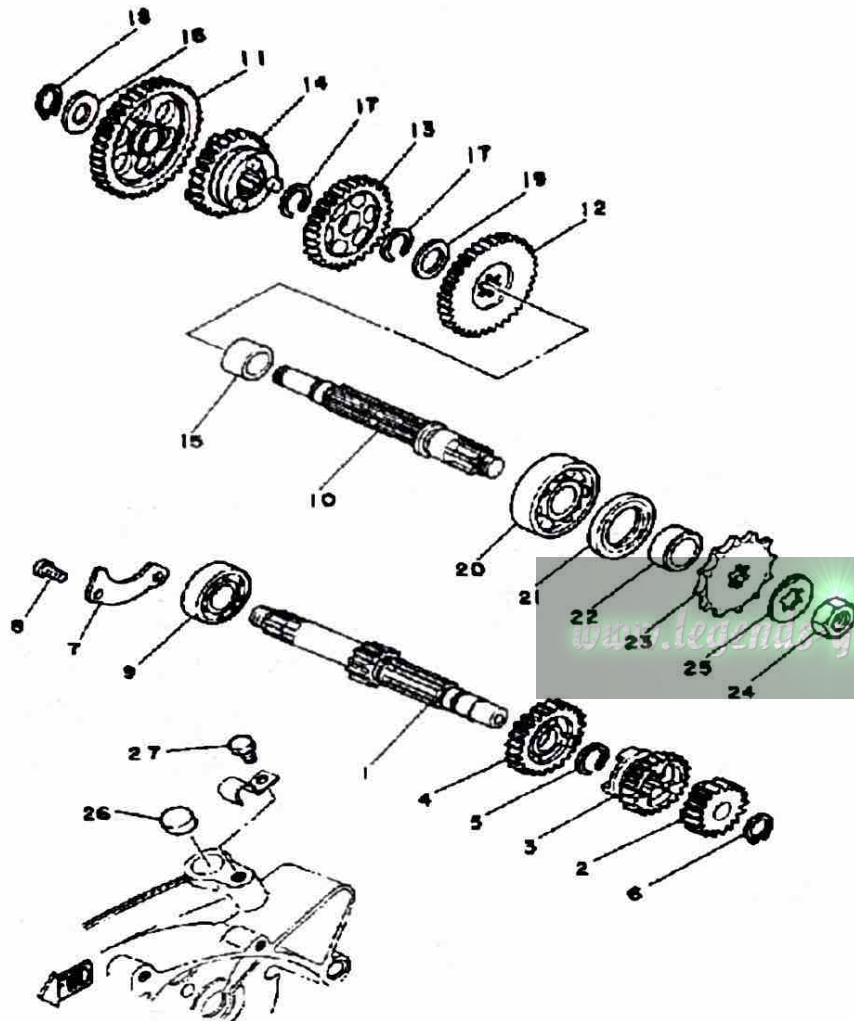
CONTINUED ON NEXT FRAME ►

# CLUTCH DT80H - J - K



Ref. No.	Part Number	Description	Qty	Remarks
28	90506-07066-00	SPRING, TENSION .....	1	
29	132-16346-00-00	HOOK, SPRING .....	1	
30	353-16396-00-00	HOUSING, PUSH SCREW ....	1	
31	93104-10085-00	OIL SEAL, SO-TYPE .....	1	
32	98503-06014-00	SCREW, PAN HEAD (92502-06016) .....	1	

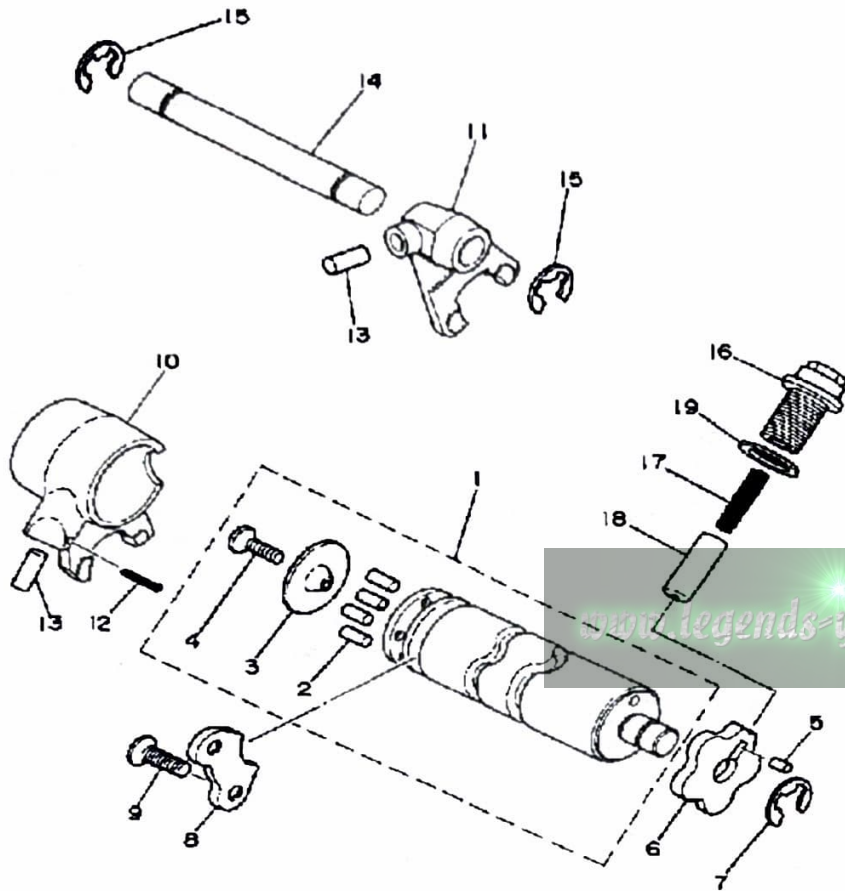
# TRANSMISSION DT80H - J - K



Ref. No.	Part Number	Description	Qty	Remarks
1	353-17411-10-00	AXLE, MAIN .....	1	
2	353-17121-11-00	GEAR, 2ND PINION .....	1	
3	353-17131-10-00	GEAR, 3RD PINION .....	1	
4	353-17141-12-00	GEAR, 4TH PINION .....	1	
5	93440-16089-00	CIRCLIP .....	1	
6	99009-13400-00	CIRCLIP (55X) .....	1	
7	353-17471-00-00	PLATE, COVER .....	1	
8	98580-06012-00	SCREW, PAN HEAD .....	2	
9	93306-20333-00	BEARING .....	1	
10	598-17421-00-00	AXLE, DRIVE .....	1	
11	353-17211-01-00	GEAR, 1ST WHEEL .....	1	
12	367-17221-00-00	GEAR, 2ND WHEEL .....	1	
13	353-17231-00-00	GEAR, 3RD WHEEL .....	1	
14	353-17241-00-00	GEAR, 4TH WHEEL .....	1	
15	90387-16126-00	COLLAR .....	1	
16	257-17219-00-00	SHIM .....	1	
17	93440-16089-00	CIRCLIP .....	2	
18	99009-13400-00	CIRCLIP (55X) .....	1	
19	52G-17968-00-10	SHIM, (1.0T) .....	1	
20	93306-30302-00	BEARING .....	1	
21	93102-25017-00	OIL SEAL .....	1	
22	90387-17137-00	COLLAR .....	1	
23	93811-14033-00	SPROCKET, DRIVE .....	1	
24	90179-12181-00	NUT, SPEC'L SHAPE .....	1	
25	90215-13019-00	WASHER, LOCK .....	1	
26	90338-16015-00	PLUG, BLIND (168-17481-00) ..	1	
27	97011-06010-00	BOLT .....	1	

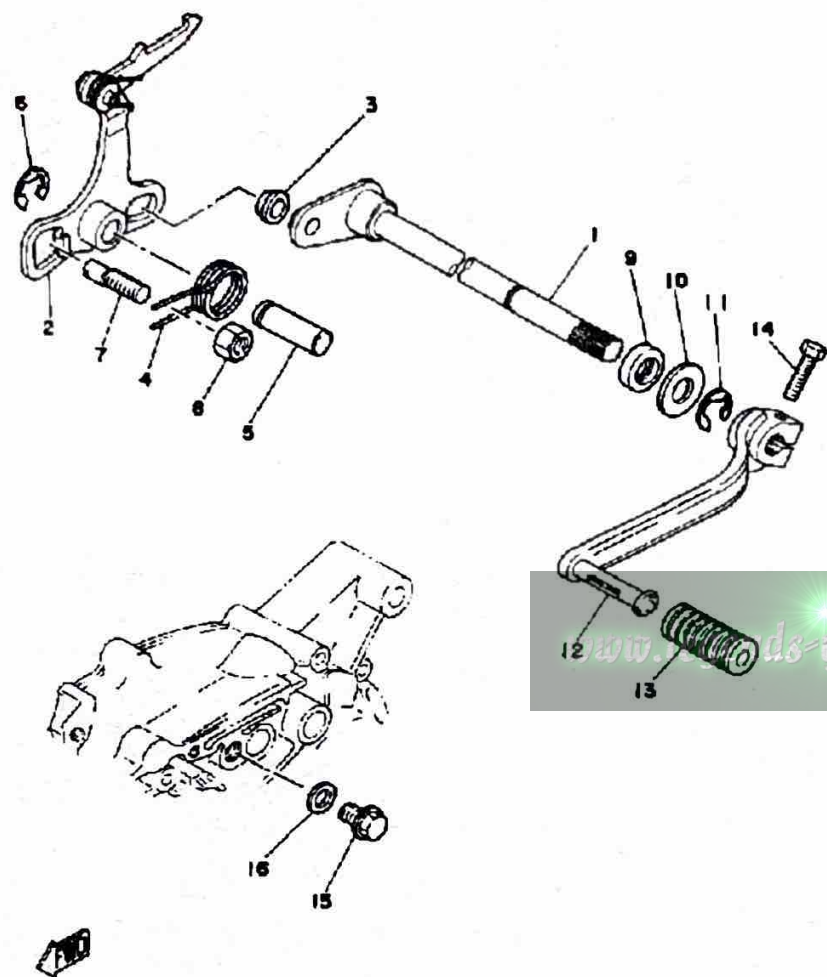
# SHIFT CAM FORK DT80H - J - K

Ref. No.	Part Number	Description	Qty	Remarks
1	367-18540-01-00	SHIFT CAM ASSEMBLY .....	1	
2	93604-10011-00	. PIN, DOWEL .....	4	
3	214-18561-00-00	. PLATE, SIDE 1 .....	1	
4	98701-05012-00	. SCREW, FLAT HEAD .....	1	
5	93604-08071-00	PIN, DOWEL .....	1	
6	(374-18141-00-00)	PLATE, STOPPER .....	1	
7	93440-12026-00	CIRCLIP, OUTER .....	1	
8	353-18562-00-00	PLATE, STOPPER 2 .....	1	
9	98603-06012-00	SCREW, OVAL HEAD (92701-06012) .....	2	
10	353-18511-01-00	FORK, SHIFT 1 .....	1	
11	353-18512-01-00	FORK, SHIFT 2 .....	1	
12	91401-25020-00	PIN, COTTER .....	1	
13	93606-14081-00	PIN, DOWEL .....	2	
14	214-18531-00-00	BAR, SHIFT FORK GUIDE 1 ...	1	
15	99006-10600-00	CIRCLIP .....	2	
16	90109-14485-00	BOLT .....	1	
17	90501-09292-00	SPRING, COMPRESSION .....	1	
18	353-18547-00-00	STOPPER, CAM .....	1	
19	137-15353-00-00	GASKET, DRAIN .....	1	



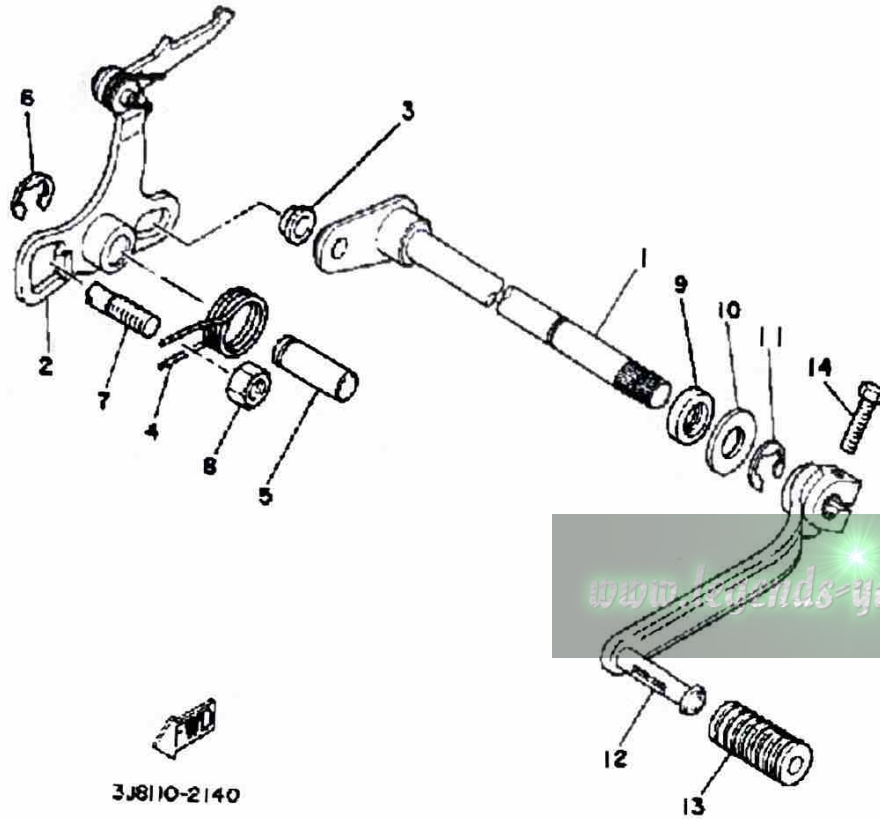
3J811C-2/30

# SHIFT SHAFT



Ref. No.	Part Number	Description	Qty	Remarks
1	353-18101-03-00	SHIFT SHAFT ASSEMBLY	1	
2	353-18120-00-00	SHIFT LEVER ASSEMBLY	1	
3	214-18178-00-00	ROLLER, SHIFT LEVER	1	
4	90508-32054-00	SPRING, TORSION	1	
5	367-18197-00-00	SHAFT	1	
6	99006-10600-00	CIRCLIP	1	
7	90149-08094-00	SCREW	1	
8	95333-08600-00	NUT	1	
9	93101-12004-00	OIL SEAL	1	
10	90201-12575-00	WASHER, PLATE	1	
11	99006-10600-00	CIRCLIP	1	
12	367-18111-00-00	PEDAL SHIFT	1	UNI CHROME
13	132-18113-01-00	COVER, SHIFT PEDAL	1	
14	97011-06020-00	BOLT	1	
15	90340-10003-00	PLUG, STRAIGHT SCRW	1	
16	90430-10031-00	GASKET	1	

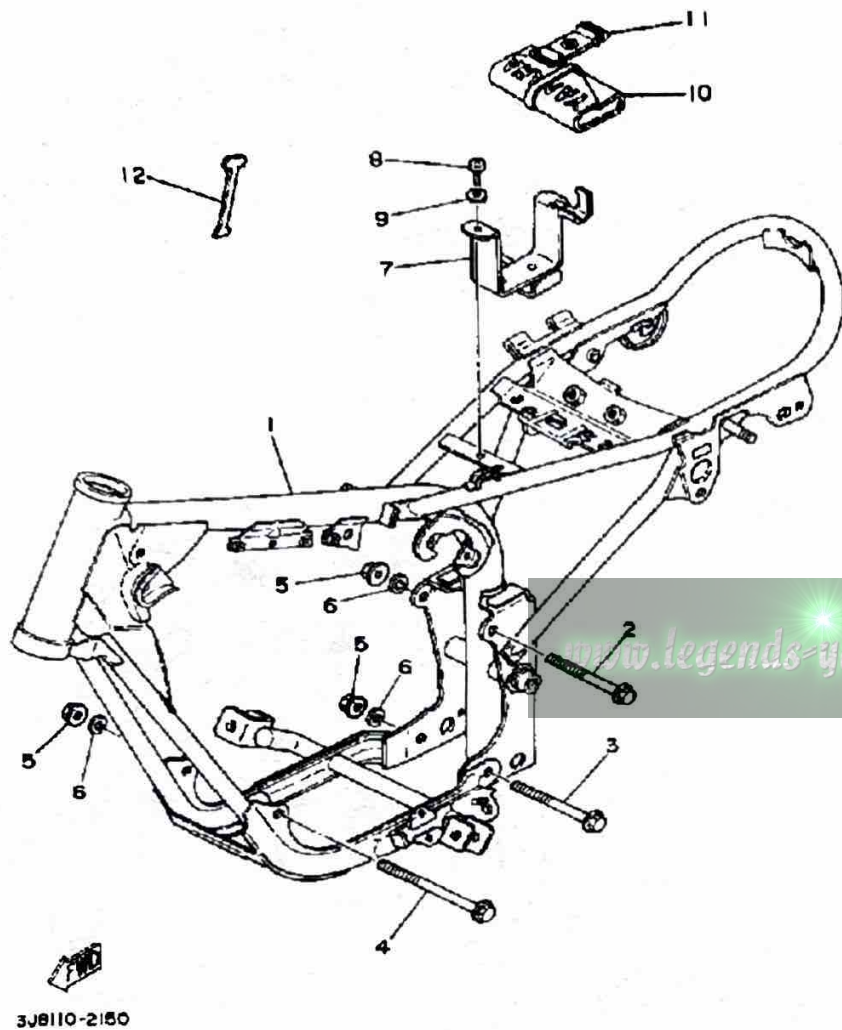
# SHIFT SHAFT DT80J - K



3J8110-2140

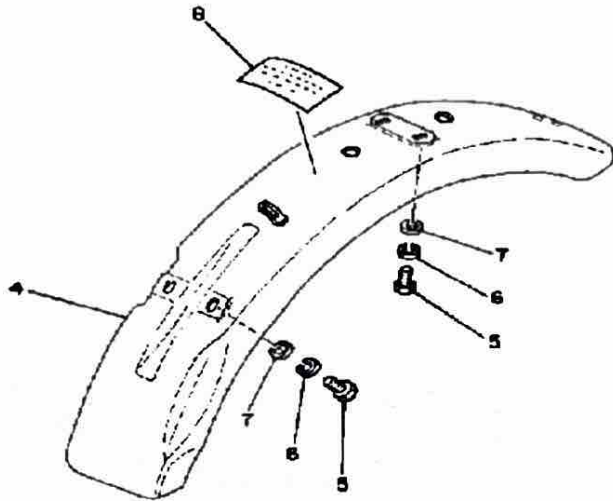
Ref. No.	Part Number	Description	Qty	Remarks
1	353-18101-03-00	SHIFT SHAFT ASSEMBLY	1	
2	353-18120-00-00	SHIFT LEVER ASSEMBLY	1	
3	214-18178-00-00	ROLLER, SHIFT LEVER	1	
4	90508-32054-00	SPRING, TORSION	1	
5	367-18197-00-00	SHAFT	1	
6	99006-10600-00	CIRCLIP	1	
7	90149-08094-00	SCREW	1	
8	95333-08600-00	NUT	1	
9	93102-12321-00	OIL SEAL, SD-TYPE	1	
10	90201-12575-00	WASHER, PLATE	1	
11	99006-10600-00	CIRCLIP	1	
12	367-18111-00-00	PEDAL SHIFT	1	UNI CHROME
13	132-18112-01-00	UNAVAILABLE IN PRICE BOOK	1	
14	97011-06020-00	BOLT	1	

# FRAME - TOOL DT80H - J - K



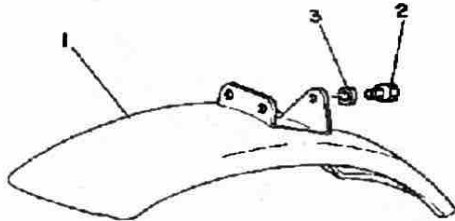
Ref. No.	Part Number	Description	Qty	Remarks
1	(3J8-21110-00-33)	FRAME .....	1	YAMAHA BLK
	(3J8-21110-01-33)	FRAME .....	1	
2	95811-08090-00	BOLT, FLANGE (95822-08090) .	1	
3	95811-08095-00	BOLT, FLANGE .....	1	
4	95811-08120-00	BOLT, FLANGE (95812-08120) .	1	
5	95701-08500-00	NUT, FLANGE .....	3	
6	92990-08100-00	WASHER .....	3	
7	368-21240-00-00	BOX, BATT. ....	1	
8	98580-06012-00	SCREW, PAN HEAD .....	1	
9	92995-06100-00	WASHER, SPRING .....	1	
10	2U2-W2810-00-00	TOOL KIT .....	1	
11	21V-21376-00-00	BAND, TOOL .....	1	
12	353-15361-00-00	GAUGE, LEVEL .....	1	

# FRONT FENDER - REAR FENDER DT80H



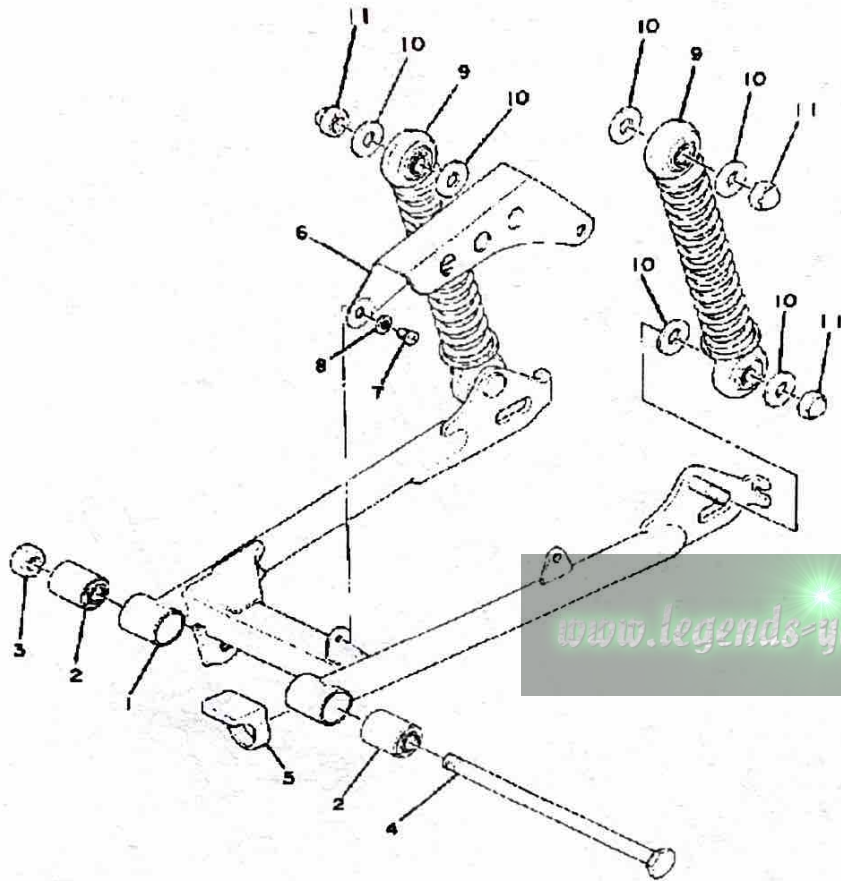
Ref. No.	Part Number	Description	Qty	Remarks
1	288-21510-01-36	FENDER, FRONT .....	1	CLEAN WHT
2	97011-06010-00	BOLT .....	1	
3	90201-061A5-00	WASHER, PLATE .....	1	
4	(2A3-21610-00-36)	FENDER, REAR .....	1	CLEAN WHT
5	97301-06014-00	BOLT, HEXAGON .....	4	
6	92995-06100-00	WASHER, SPRING .....	4	
7	90201-061A5-00	WASHER, PLATE .....	4	
8	(3J8-21683-10-00)	PLATE, SPEC .....	1	
	(3J8-21683-20-00)	PLATE, SPEC .....	1	
	(3J8-21683-30-00)	PLATE, SPEC .....	1	

[www.legends-yamaha-enduros.com](http://www.legends-yamaha-enduros.com)



  
3J8110-2160

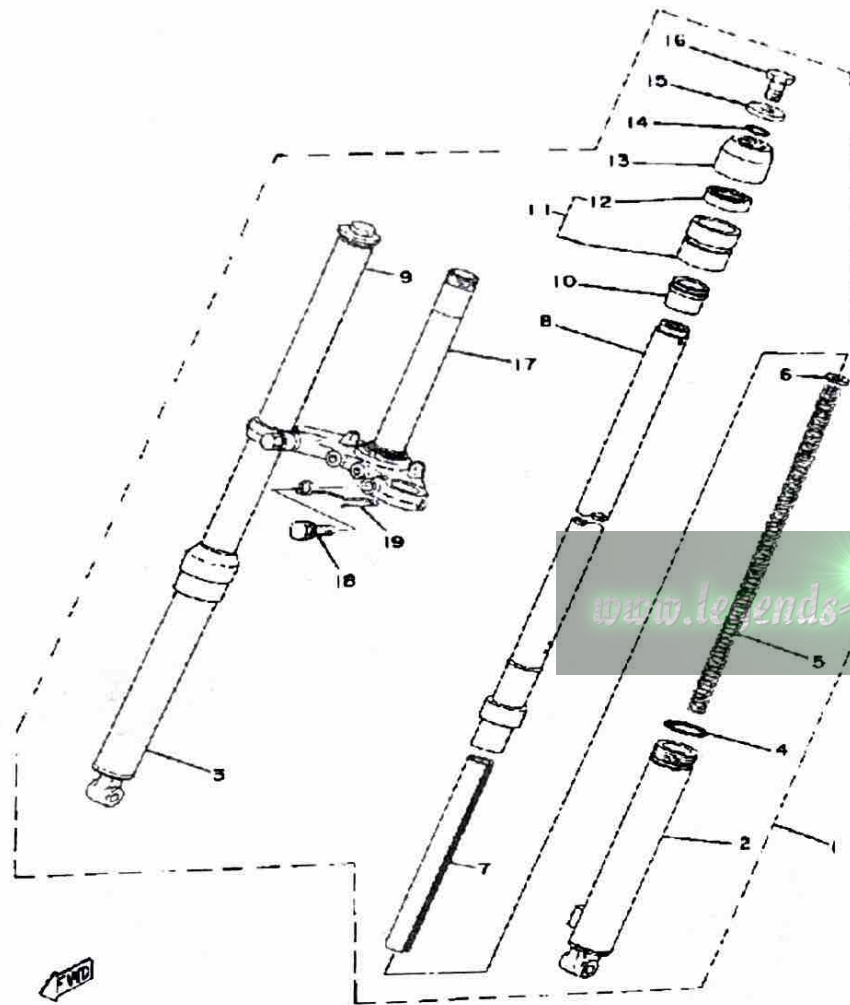
# REAR ARM - SUSPENSION DT80H - J -



Ref. No.	Part Number	Description	Qty	Remarks
1	(367-22110-00-33)	REAR ARM .....	1	YAMAHA BLK
2	102-22123-00-00	BUSH 1 .....	2	
3	95303-10600-00	NUT (95301-10600) .....	1	
4	288-22141-00-00	SHAFT, PIVOT .....	1	
5	183-22151-00-00	SEAL, GUARD .....	1	
6	288-22311-00-33	CASE, CHAIN .....	1	YAMAHA BLK
7	98501-05008-00	SCREW, PAN HEAD .....	2	
8	92990-05100-00	WASHER, SPRING .....	2	
9	367-22210-21-00	SHK/ABS ASSEMBLY, REAR .	2	
10	90201-10437-00	WASHER, PLATE .....	8	
11	90176-10013-00	NUT, CROWN .....	4	

3J8110-2160

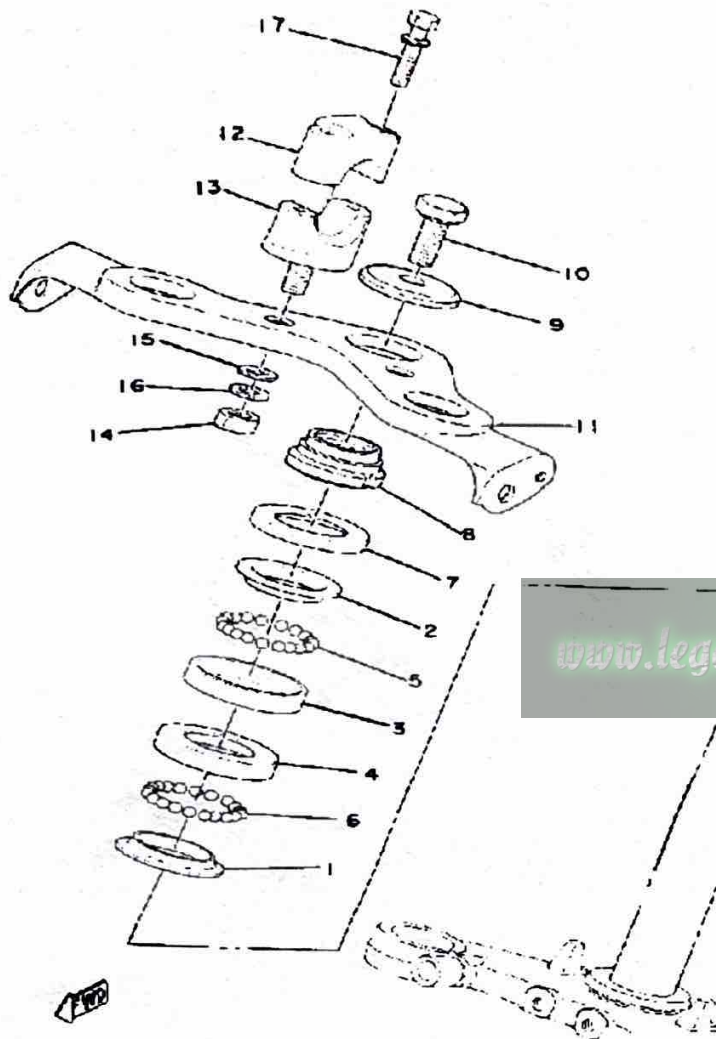
# FRONT FORK DT80H - J - K



Ref. No.	Part Number	Description	Qty	Remarks
1	(2F4-23101-60-35)	FRONT FORK ASSEMBLY	1	SILVER
2	(374-23126-00-35)	TUBE, OUTER 1	1	SILVER
3	(2F4-23136-60-35)	TUBE, OUTER 2	1	SILVER
4	207-23147-00-00	. O-RING	2	
5	(367-23141-61-00)	SPRING, FRONT FORK	2	
6	(290-23149-00-00)	WASHER, SPRING UPR	2	
7	(367-23166-61-00)	SPACER, OIL LOCK	2	
8	439-23124-00-00	. TUBE, INNER 1	1	
9	(367-23134-61-00)	TUBE, INNER 2	1	
10	109-23125-00-00	. METAL, SLIDE 1	2	
11	290-23150-01-00	. OUTER NUT	2	
12	109-23145-01-00	. OIL SEAL	2	
13	290-23144-00-00	. SEAL, DUST	2	
14	307-23114-00-00	. O-RING	2	
15	207-23112-00-00	. WASHER, CAP	2	
16	395-23111-00-00	. BOLT, CAP	2	
17	367-23340-60-33	. UNDER BRACKET	1	YAMAHA BLK
18	5J0-23346-00-00	. BOLT 1	2	
19	(2A3-23319-00-00)	HOLDER, CABLE 2	1	

FWD  
3J8110-2200

# STEERING DT80H - J - K

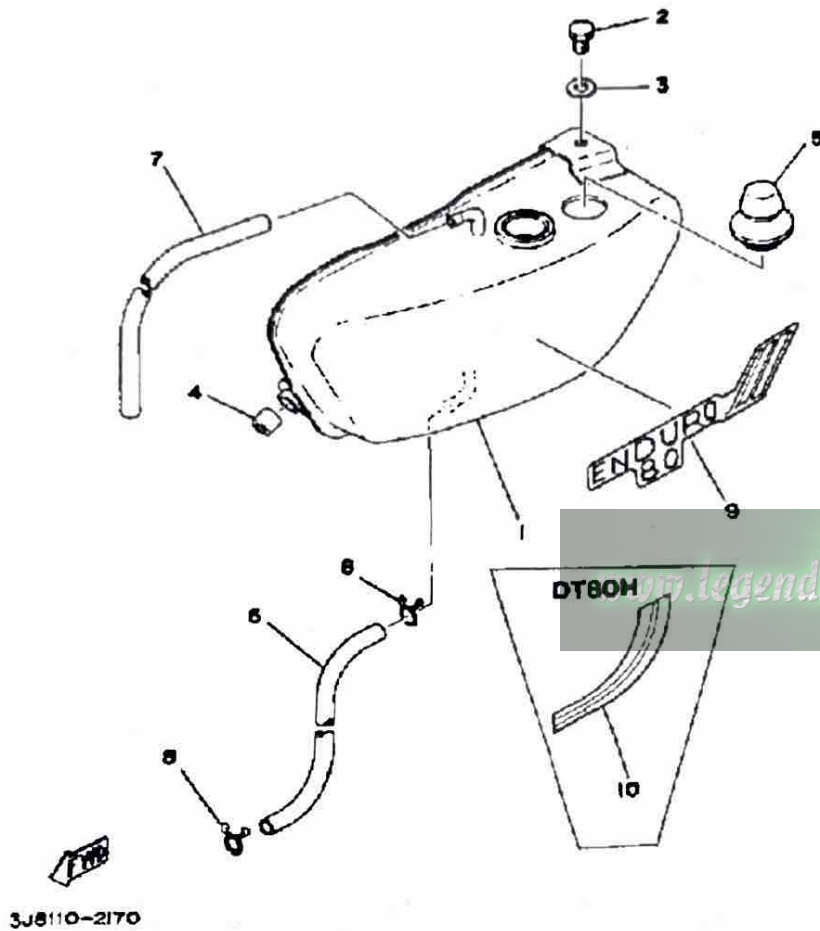


Ref. No.	Part Number	Description	Qty	Remarks
1	156-23411-00-00	RACE, BALL 1 .....	1	
2	22F-23411-01-00	RACE, BALL 1 .....	1	
3	22F-23412-01-00	RACE, BALL 2 .....	1	
4	156-23412-00-00	RACE, BALL 2 .....	1	
5	93503-16010-00	BALL .....	22	
6	93501-04011-00	BALL .....	19	
7	122-23416-00-00	COVER, BALL RACE 2 .....	1	
8	90179-25051-00	NUT .....	1	
9	90209-10021-00	WASHER, SPEC"L SHAP .....	1	
10	90105-10006-00	BOLT, WASHER BASED .....	1	
11	(368-23435-00-35)	CROWN, HANDLE .....	1	SILVER
12	462-23441-00-00	HOLDER, HANDLE UPR (122-23441-00-00) .....	2	
13	462-23442-00-98	HOLDER, HANDLE LWR (122-23442-02-00) .....	2	
14	95303-10600-00	NUT (95301-10600) .....	2	
15	92990-10600-00	WASHER, PLATE .....	2	
16	92990-10100-00	WASHER, SPRING .....	2	
17	90119-06017-00	BOLT, WITH WASHER .....	4	

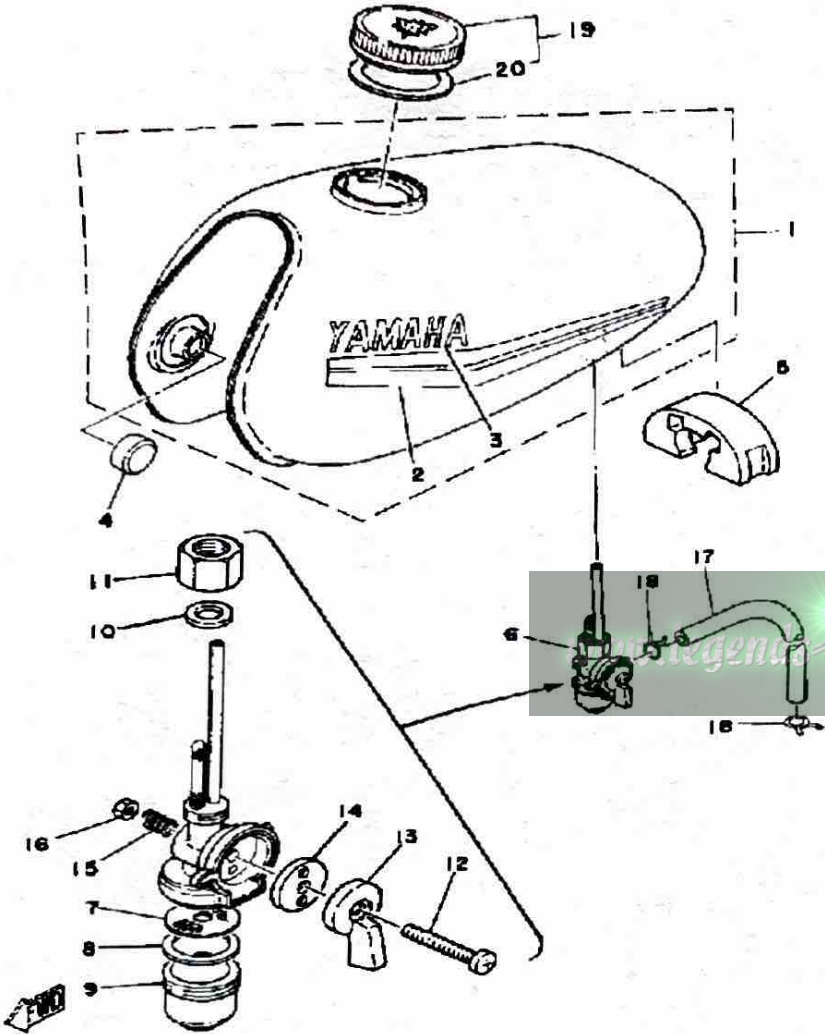
3J6110-2190

# OIL TANK DT80H - J - K

Ref. No.	Part Number	Description	Qty	Remarks
1	(2A3-21751-00-26)	TANK, OIL .....	1	COMP. YEL CHAPPY RED
	(2A3-21751-00-E1)	TANK, OIL .....	1	
	(2A3-21751-00-G8)	TANK, OIL .....	1	
2	97013-06012-00	BOLT .....	1	
3	90201-061A5-00	WASHER, PLATE .....	1	
4	353-21778-00-00	DAMPER, LOCATING 1 .....	1	
5	2A3-21771-00-00	BODY, CAP .....	1	
6	90445-09226-00	HOSE .....	1	
7	90445-09226-00	HOSE .....	1	
8	90467-08003-00	CLIP .....	2	
9	(3J8-21781-20-00)	EMBLEM 1 .....	1	
	3J8-21781-10-00	EMBLEM 1 .....	1	
	3J8-21781-30-00	EMBLEM 1 .....	1	
10	(3J8-21782-00-00)	EMBLEM 2 .....	1	

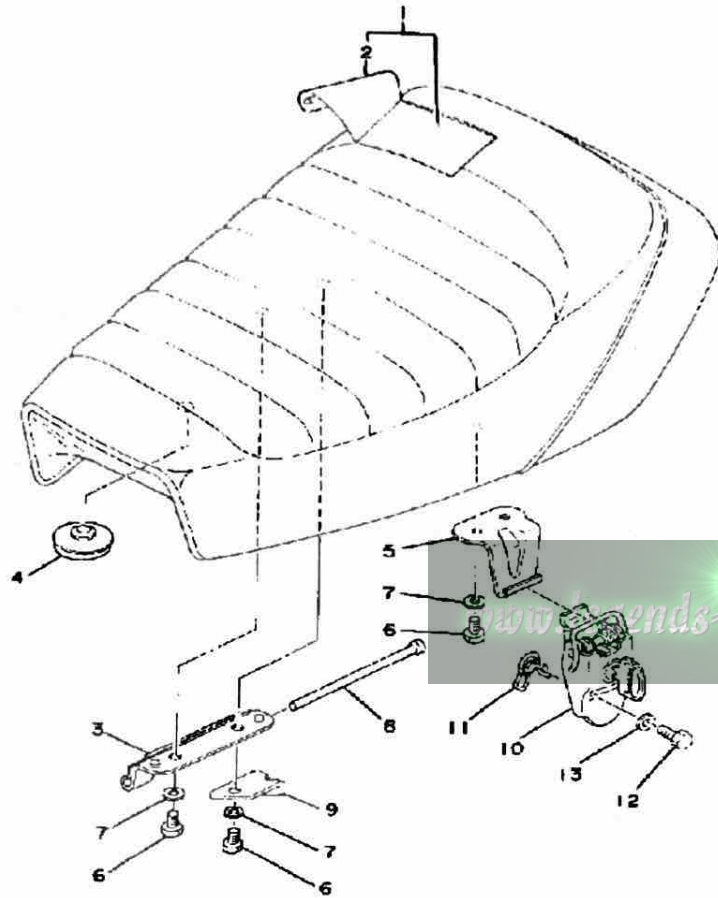


# FUEL TANK DT80H - J - K



Ref. No.	Part Number	Description	Qty	Remarks
1	(367-24110-Y0-09)	FUEL TANK .....	1	COMP. YEL
	367-24110-T0-01	FUEL TANK .....	1	
	367-24110-Y0-W5	FUEL TANK .....	1	CHAPPY RED
2	(3J8-24240-10-00)	GRAPHIC SET .....	1	
	(3J8-24240-30-00)	GRAPHIC SET .....	1	
	3J8-24240-20-00	. GRAPHIC SET .....	1	
3	388-24161-00-00	. EMBLEM 1 .....	1	
	388-24161-00-00	. EMBLEM 1 .....	2	
4	122-24181-00-00	DAMPER, LOCATING 1 .....	2	
5	353-24182-00-00	DAMPER, LOCATING 2 .....	1	
6	367-24500-04-00	FUEL COCK ASSEMBLY 1 (5U7-24500-00) .....	1	
7	355-24515-00-00	. NET, FILTER 2 .....	1	
8	102-24522-01-00	. GASKET .....	1	
9	122-24521-00-00	. CUP, FILTER .....	1	
10	122-24532-00-00	. GASKET .....	1	
11	603-24531-01-00	. NUT .....	1	
12	98501-05030-00	. SCREW, PAN HEAD .....	1	
13	(355-24524-01-00)	LEVER, COCK .....	1	
14	355-24523-00-00	. VALVE .....	1	
15	(355-24518-00-00)	WASHER, WAVE .....	1	
16	95380-05600-00	. NUT .....	1	
17	90445-09066-00	HOSE .....	1	
18	90467-08003-00	CLIP .....	2	
19	122-24610-01-00	CAP ASSEMBLY .....	1	
	127-24650-02-00	CAP ASSEMBLY .....	1	ALT. PRT
20	122-24612-01-00	. GASKET, CAP .....	1	

# SEAT - DT80H - J - K

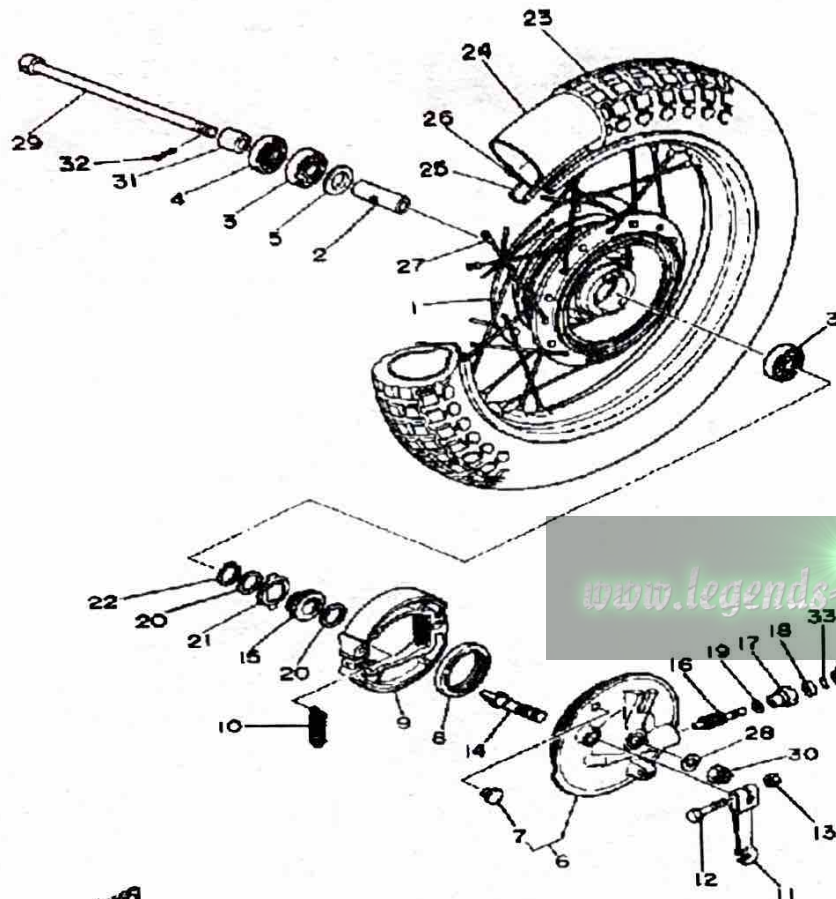


Ref. No.	Part Number	Description	Qty	Remarks
1	2A3-W2473-00-00	SEMI-DBL-SEAT ASSEMBLY ..	1	
2	2A3-24771-00-00	. COVER, SM-DBL SEAT .....	1	
3	353-24726-00-00	HINGE, SEAT .....	1	
4	1L9-24741-00-00	PAD, SEAT .....	3	
5	278-24728-00-00	BRACKET, SEAT .....	1	
6	97013-06012-00	BOLT .....	4	
	WAS-HER-	0 1 .....	1	
8	1K8-24774-00-00	PIN .....	1	
9	374-24768-00-00	STOPPER .....	1	
10	1K8-24705-00-00	SEAT LOCK ASSEMBLY (2A3-24705-00) .....	1	
11	341-24818-02-00	HOOK, HELMET .....	1	
12	97011-06025-00	BOLT (97001-06025) .....	1	
13	90201-061A5-00	WASHER, PLATE .....	1	



3J8110-2220

# FRONT WHEEL DT80H - J - K



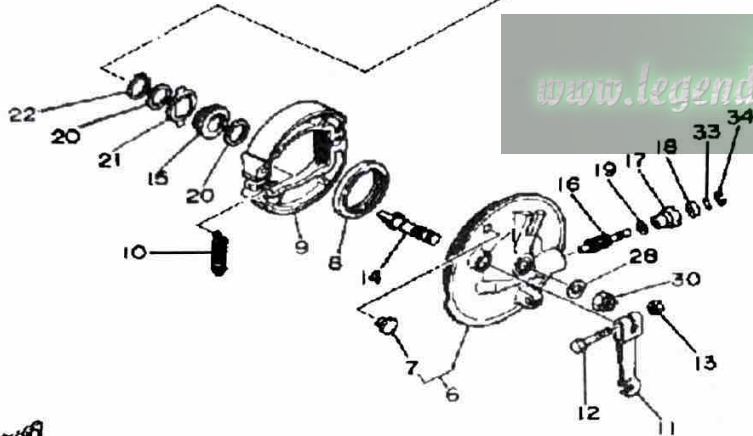
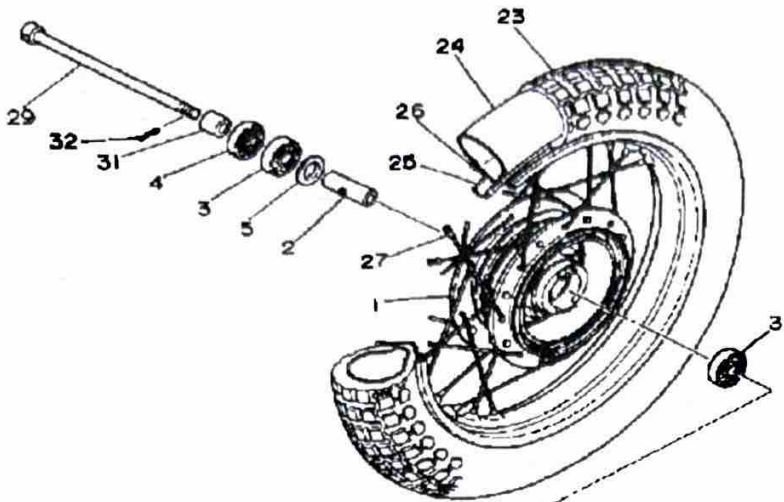
3J8110-2230

Ref. No.	Part Number	Description	Qty	Remarks
1	(367-25111-00-Y8)	HUB, FRONT	1	SILVER DUST
2	90560-10303-00	SPACER, BEARING	1	
3	93306-30003-00	BEARING (B6300Z)	2	
4	93102-20009-00	OIL SEAL	1	
5	2E9-25116-00-00	FLANGE, SPACER 2	1	
6	1K8-25016-00-Y8	BRAKE SHOE PLT ASSEMBLY	1	SILVER DUST
7	90480-10068-00	GROMMET	1	
8	93105-47007-00	OIL SEAL	1	
9	10X-W2536-00-00	BRAKESHOE SET-2PCS	2	
	5H0-W2536-00-00	BRAKESHOE SET-2PCS	2	
10	90506-15260-00	SPRING, TENSION	2	
	90506-16150-00	SPRING, TENSION (102-25333-00)	2	
11	538-25155-00-00	LEVER, CAMSHAFT 1	1	
12	90101-06278-00	BOLT	1	
13	95380-06600-00	NUT	1	
14	3Y6-25351-00-00	CAMSHAFT	1	
15	(2F4-25135-00-00)	GEAR, DRIVE	1	
16	2F4-25138-00-00	GEAR, METER	1	
17	109-25136-00-00	BUSH	1	
18	93104-07003-00	OIL SEAL	1	
19	90201-07076-00	WASHER, PLATE	1	
20	90201-20269-00	WASHER, PLATE	2	
21	183-25149-00-00	CLUTCH, METER	1	
22	94125-15478-00	250-15 IRC TRIALS	1	
	99009-20400-00	CIRCLIP	1	
24	94225-15103-00	TUBE 250X 5	1	
26	94414-15058-00	RIM 1.40X 5	1	
27	288-25104-01-00	SPOKE SET, FRONT	1	

CONTINUED ON NEXT FRAME ►

# FRONT WHEEL DT80H - J - K

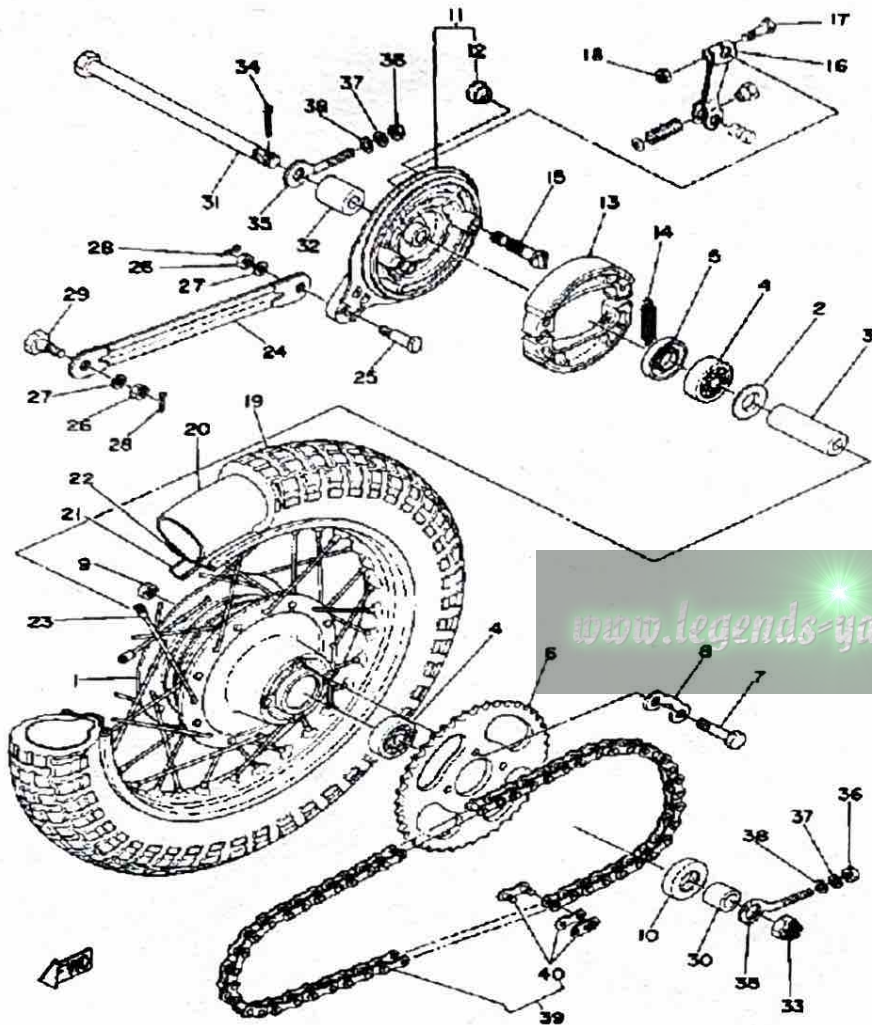
Ref. No.	Part Number	Description	Qty	Remarks
27	94313-15154-00	BAND, RIM .....	1	
28	92990-10600-00	WASHER, PLATE .....	1	
29	99999-02188-00	AXLE, WHEEL (353-25181-03-00) .....	1	
30	90171-10004-00	NUT, CASTLE .....	1	
31	90387-10077-00	COLLAR .....	1	
32	91490-20020-00	PIN, COTTER .....	1	
33	93210-14104-00	O-RING .....	1	
34	102-25137-00-00	RING, STOP .....	1	



[www.legends-yamaha-enduros.com](http://www.legends-yamaha-enduros.com)

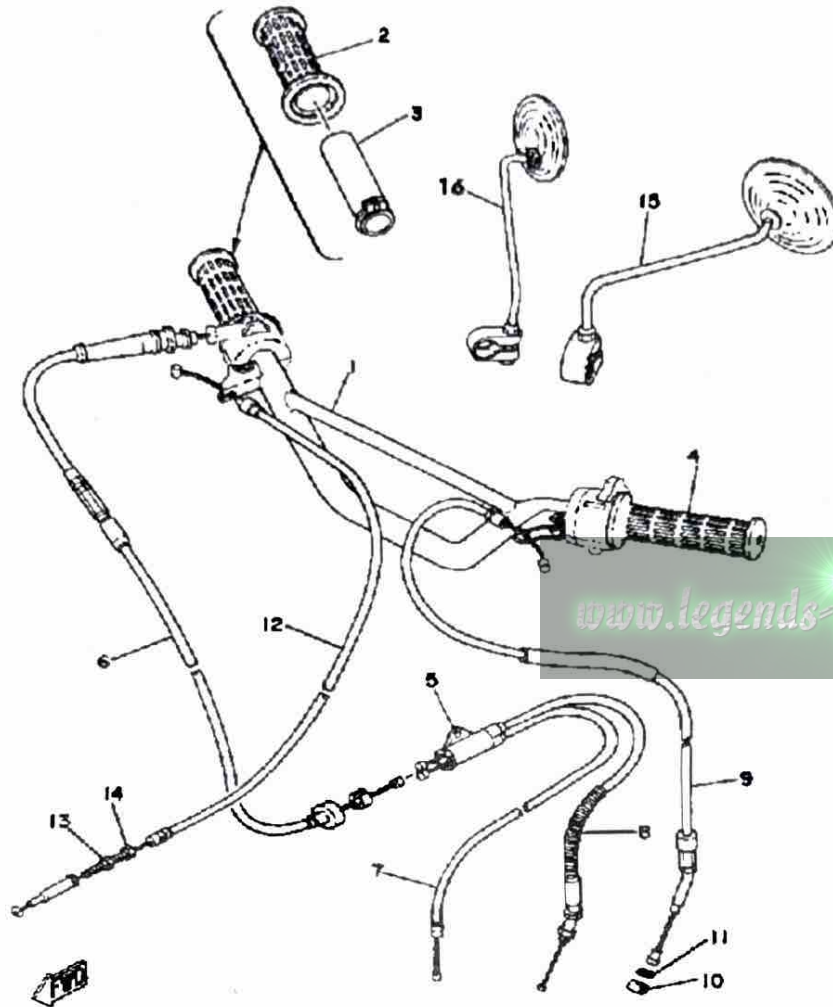
3J8110-2230

# REAR WHEEL DT80H - J - K



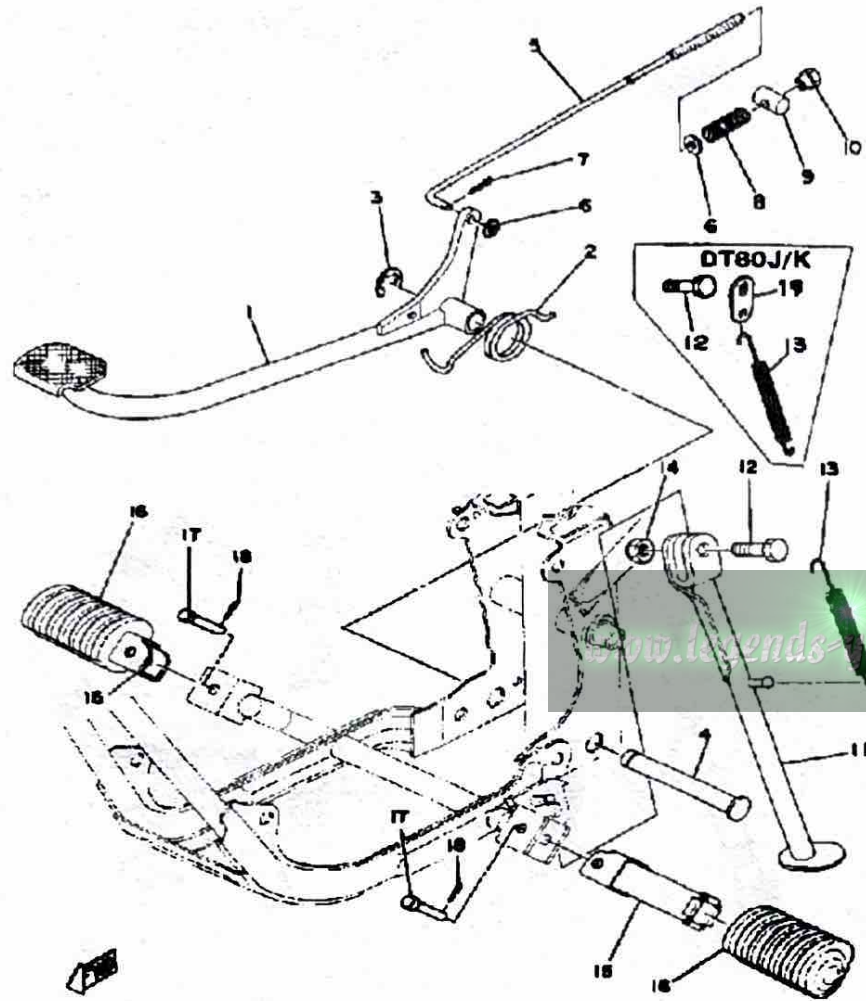
Ref. No.	Part Number	Description	Qty	Remarks
1	(288-25311-01-Y8)	HUB, REAR	1	SILVER DUST
2	109-25315-00-00	FLANGE, SPACER	1	
3	90560-12170-00	SPACER	1	
4	93306-30101-00	BEARING (B6301)	2	
5	93106-20033-00	OIL SEAL (3TU)	1	
6	5J1-25441-20-00	SPROCKET, DRVN 41T (288-25441-10-33)	1	YAMAHA BLK
7	90109-08319-00	BOLT	4	
8	2A3-25412-00-00	WASHER	2	
9	90170-08158-00	NUT	4	
10	93104-21016-00	OIL SEAL, SO-TYPE	1	
11	355-25026-00-Y8	BRAKE SHOE PLT ASSEMBLY	1	SILVER DUST
12	90480-10068-00	GROMMET	1	
13	10X-W2536-00-00	BRAKESHOE SET-2PCS	2	
	5H0-W2536-00-00	BRAKESHOE SET-2PCS	2	
14	90506-15260-00	SPRING, TENSION	2	
	90506-16150-00	SPRING, TENSION (102-25333-00)	2	
15	3Y6-25351-00-00	CAMSHAFT	1	
16	538-25355-00-00	LEVER, CAMSHAFT	1	
17	90101-06278-00	BOLT	1	
18	95380-06600-00	NUT	1	
19	94127-14477-00	275-14 IRC TRIALS	1	
20	94227-14196-00	TUBE	1	
21	94327-14076-00	BAND, RIM (2.50-14) (94325-14099-00)	1	

# STEERING HANDLE - CABLE DT80H - J



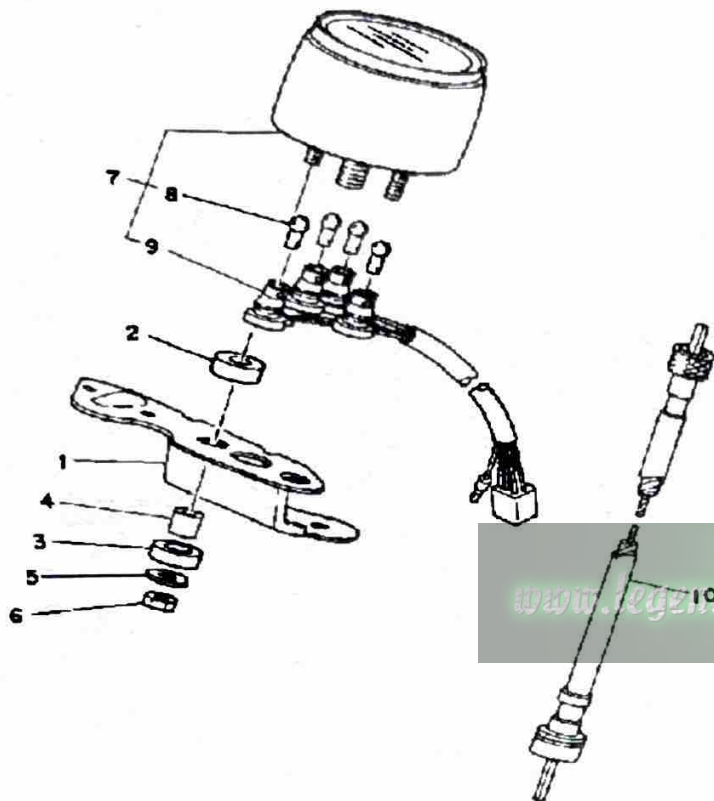
Ref. No.	Part Number	Description	Qty	Remarks
1	367-26111-03-00	HANDLEBAR .....	1	
2	462-26242-00-00	GRIP (R.H.) .....	1	
3	434-26243-12-00	TUBE, THROTTLE GUIDE ....	1	
4	462-26241-00-00	GRIP (L.H.) .....	1	
5	4U1-26261-00-00	CONNECTOR, CABLE .....	1	
6	367-26311-02-00	CABLE, THROTTLE 1 .....	1	
7	367-26312-01-00	CABLE, THROTTLE 2 .....	1	
8	367-26322-10-20	CABLE, PUMP .....	1	
9	367-26335-02-00	CABLE, CLUTCH .....	1	
10	164-26363-00-00	END, CABLE .....	1	
11	90201-061A5-00	WASHER, PLATE .....	1	
12	367-26341-01-00	CABLE, BRAKE .....	1	
13	90179-06143-00	NUT, SPEC'L SHAPE .....	1	
14	90123-06011-00	BOLT .....	1	
15	374-26290-00-00	MIRROR ASS'Y (LEFT) .....	1	
16	374-26280-00-00	MIRROR ASS'Y (RIGHT) .....	1	

# STAND - FOOTREST DT80H - J - K



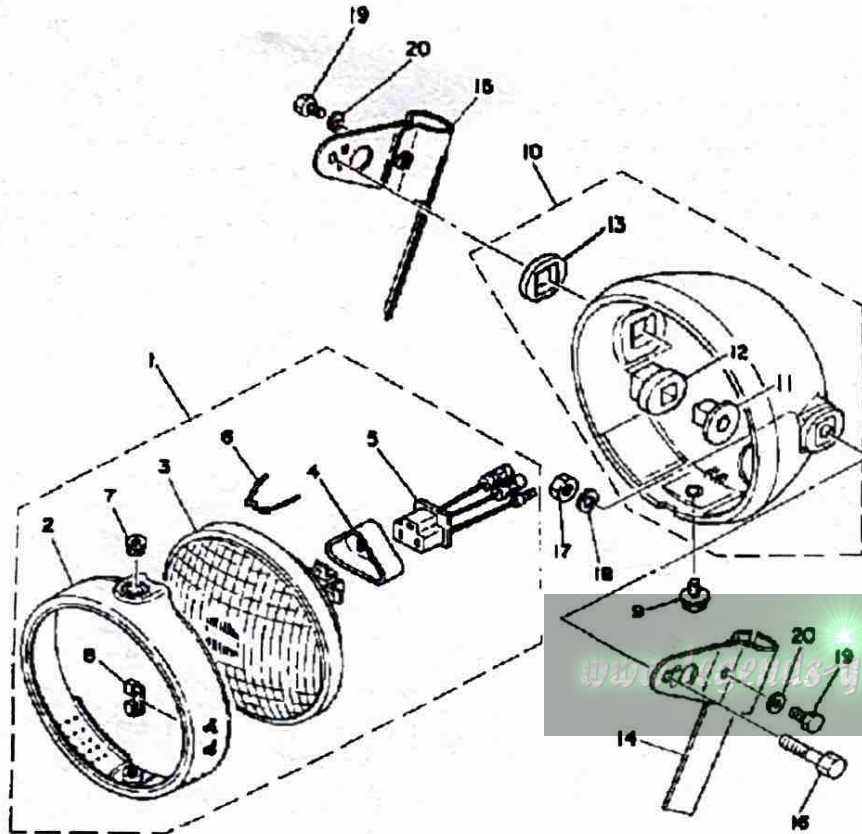
Ref. No.	Part Number	Description	Qty	Remarks
1	2F4-27211-00-R4	PEDAL, BRAKE .....	1	
	2F4-27211-00-R4	PEDAL, BRAKE .....	1	BLACK
2	90508-32056-00	SPRING, TORSION .....	1	
3	93430-12008-00	CIRCLIP .....	1	
4	2A3-27212-00-00	SHAFT, BRAKE PEDAL .....	1	
5	288-27231-00-00	ROD, BRAKE .....	1	
6	(90201-06600-00)	WASHER, PLATE .....	2	
	91490-20020-00	PIN, COTTER .....	1	
8	90501-10245-00	SPRING, COMPRESSION .....	1	
9	90249-12008-00	PIN .....	1	
10	90179-06411-00	NUT .....	1	
11	(3J8-27311-00-R4)	STAND, SIDE .....	1	
	367-27311-02-R4	STAND, SIDE .....	1	BLACK
12	90109-08031-00	BOLT .....	1	
13	90506-29052-00	SPRING, TENSION .....	1	
	90506-29266-00	SPRING, TENSION .....	1	
14	90185-08055-00	NUT, SELF-LOCKING .....	1	
15	214-27421-00-00	FOOTREST 2 .....	2	
16	214-27413-00-00	COVER, FOOTREST .....	2	
17	91701-08038-00	PIN, CLEVIS .....	2	
18	91490-20020-00	PIN, COTTER .....	2	
19	3J8-27315-01-00	LINK, SIDE STAND (3J8-27315-00) .....	1	

# METER DT80H - J - K



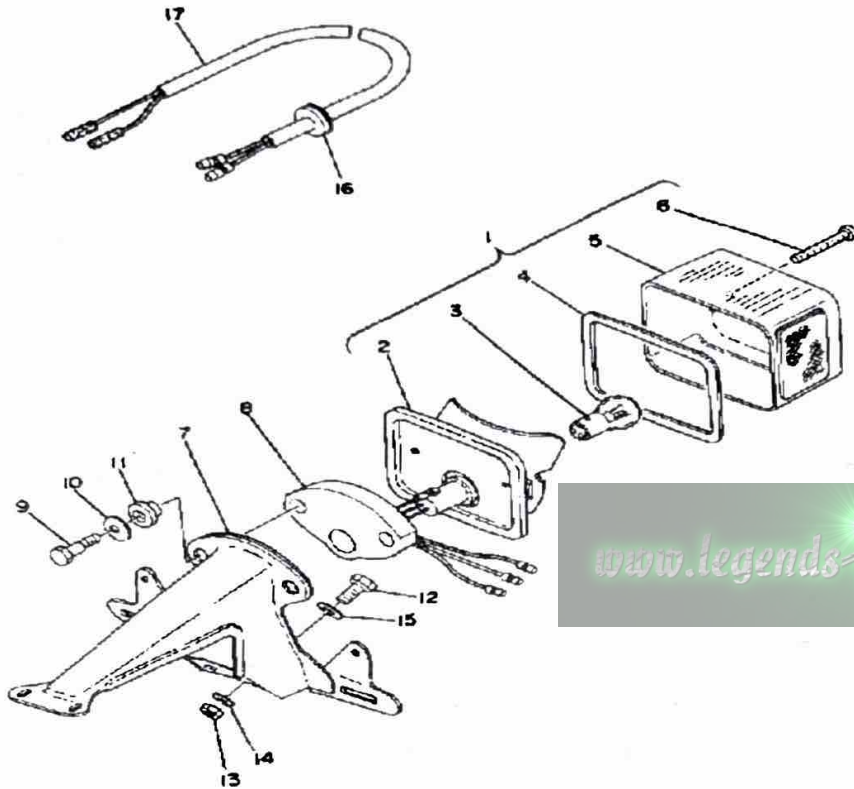
Ref. No.	Part Number	Description	Qty	Remarks
1	(2F4-83519-00-98)	BRACKET, METER .....	1	LW GLOSS BK
2	(1M3-83513-00-00)	DAMPER .....	2	
3	355-83526-00-00	DAMPER 2 .....	2	
4	355-83522-00-00	COLLAR .....	2	
5	90201-06412-00	WASHER, PLATE .....	2	
6	95380-06600-00	NUT .....	2	
7	3J8-83510-A0-00	SPEEDOMETER ASSEMBLY ..	1	
8	122-83515-11-00	. UNAVAILABLE IN PRICE BOOK .....	4	
9	(2F4-83520-00-00)	SOCKET CORD ASSEMBLY ..	1	
10	2A1-83550-10-00	SPEEDOMETER CABLE .....	1	

# HEADLIGHT DT80H - J - K



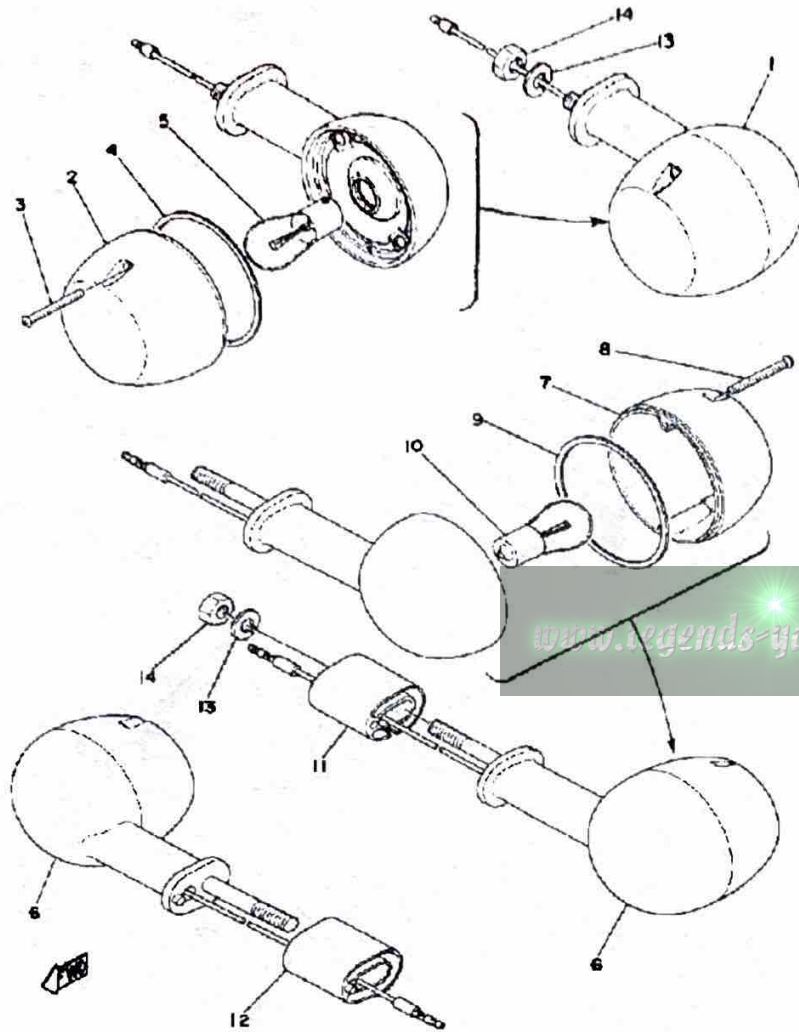
Ref. No.	Part Number	Description	Qty	Remarks
1	(1M1-84110-61-00)	HEADLIGHT UNIT ASSEMBLY	1	
2	1M1-84195-61-00	. RING, RETAINING	1	
3	498-84120-61-00	. LENS ASSEMBLY	1	
4	341-84397-61-00	. COVER, SOCKET	1	
5	371-84312-60-00	. SOCKET	1	
6	1M1-84124-60-00	. SPRING, SET	3	
7	1M1-84133-60-00	. COLLAR, SCREW	1	
8	498-84128-60-00	. SPACER	1	
9	1M1-84137-60-00	BOLT, SPECIAL	1	
10	1M1-84130-60-00	BODY ASSEMBLY, HEADLIGHT (1M1-84130-60-98)	1	YAMAHA BLK
11	498-84145-60-00	. COLLAR, BODY FITTING	2	
12	498-84163-60-00	. DAMPER	2	
13	1M1-84164-60-00	. DAMPER	2	
14	2F4-84118-00-00	STAY, HEADLIGHT 1	1	
15	2F4-84119-00-00	STAY, HEADLIGHT 2	1	
16	97303-08035-00	BOLT, HEXAGON	2	
17	95333-08600-00	NUT	2	
18	92990-08100-00	WASHER	2	
19	97013-06012-00	BOLT	2	
20	90201-061A5-00	WASHER, PLATE	2	

# TAILLIGHT DT80H - J - K



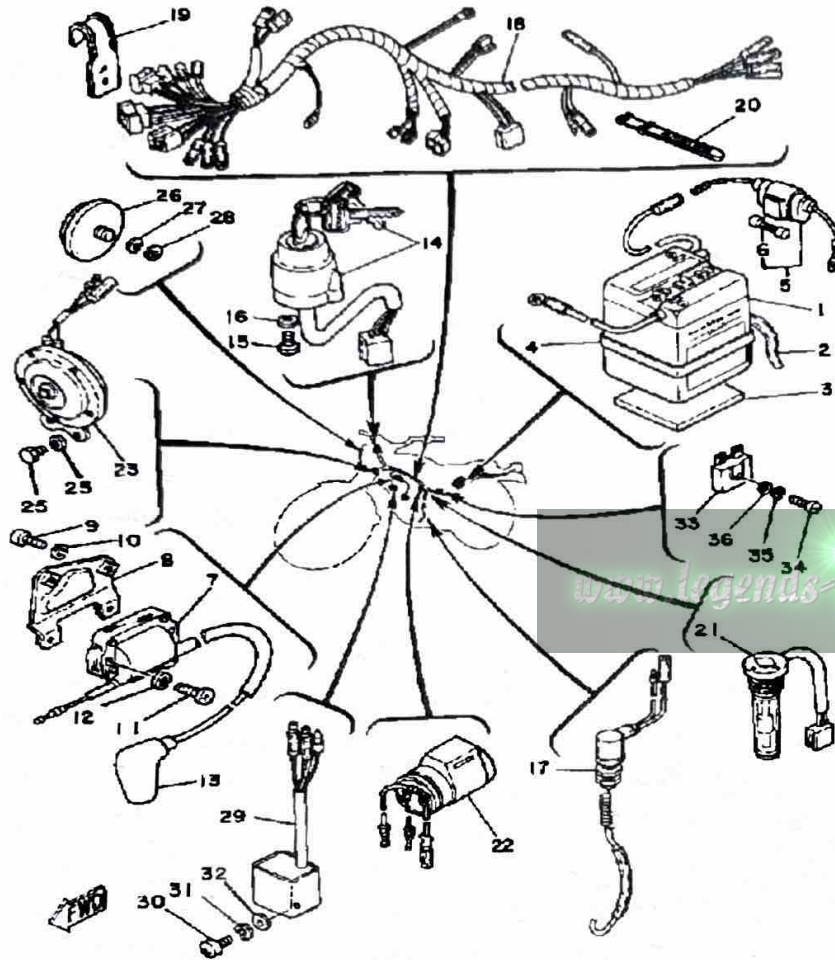
Ref. No.	Part Number	Description	Qty	Remarks
1	2F4-84510-60-00	TAILLIGHT UNIT ASSEMBLY ..	1	
2	2F4-84510-60-00	. TAILLIGHT UNIT ASSEMBLY .	1	
3	1M1-84514-60-00	. BULB .....	1	
4	1M1-84523-60-00	. GASKET, LENS .....	1	
5	1M1-84521-60-00	. LENS, TAILLIGHT .....	1	
6	1M1-84524-60-00	. SCREW, LENS FITTING .....	2	
7	(2F4-84551-60-33)	BRACKET, LICENCE .....	1	YAMAHA BLK
8	1T2-84512-60-00	SEAT, BASE .....	1	
9	1T2-84526-60-00	SCREW .....	2	
10	2H7-84754-00-00	WASHER, SPECIAL .....	2	
11	1M1-84527-60-00	DAMPER .....	2	
12	97013-06012-00	BOLT .....	2	
13	95380-06600-00	NUT .....	2	
14	92995-06100-00	WASHER, SPRING .....	2	
15	92990-06200-00	WASHER .....	2	
16	90480-12013-00	GROMMET .....	2	
17	(2F4-84517-00-00)	CORD, TAILLIGHT .....	1	

# FLASHER LIGHT DT80H - J - K



Ref. No.	Part Number	Description	Qty	Remarks
1	232-83320-62-93	FRT FLSHR LITE ASSEMBLY	2	CHROM PLATED
2	183-83312-70-00	. LENS, FLASHER	1	
3	183-83333-71-00	. SCREW, LENS FITTING	2	
4	183-83313-70-00	. GASKET, FLSHR LENS	1	
5	115-83311-60-00	. BULB, FLASHER	1	
6	260-83310-30-93	R FLSHR LITE ASSEMBLY	2	CHROM PLATED
7	183-83312-70-00	. LENS, FLASHER	1	
8	183-83333-71-00	. SCREW, LENS FITTING	2	
9	183-83313-70-00	. GASKET, FLSHR LENS	1	
10	115-83311-60-00	. BULB, FLASHER	1	
11	260-83316-30-00	COLLAR, FLASHER 1	1	
12	260-83326-30-00	COLLAR, FLASHER 2	1	
13	92990-08100-00	WASHER	4	
14	95333-08600-00	NUT	4	

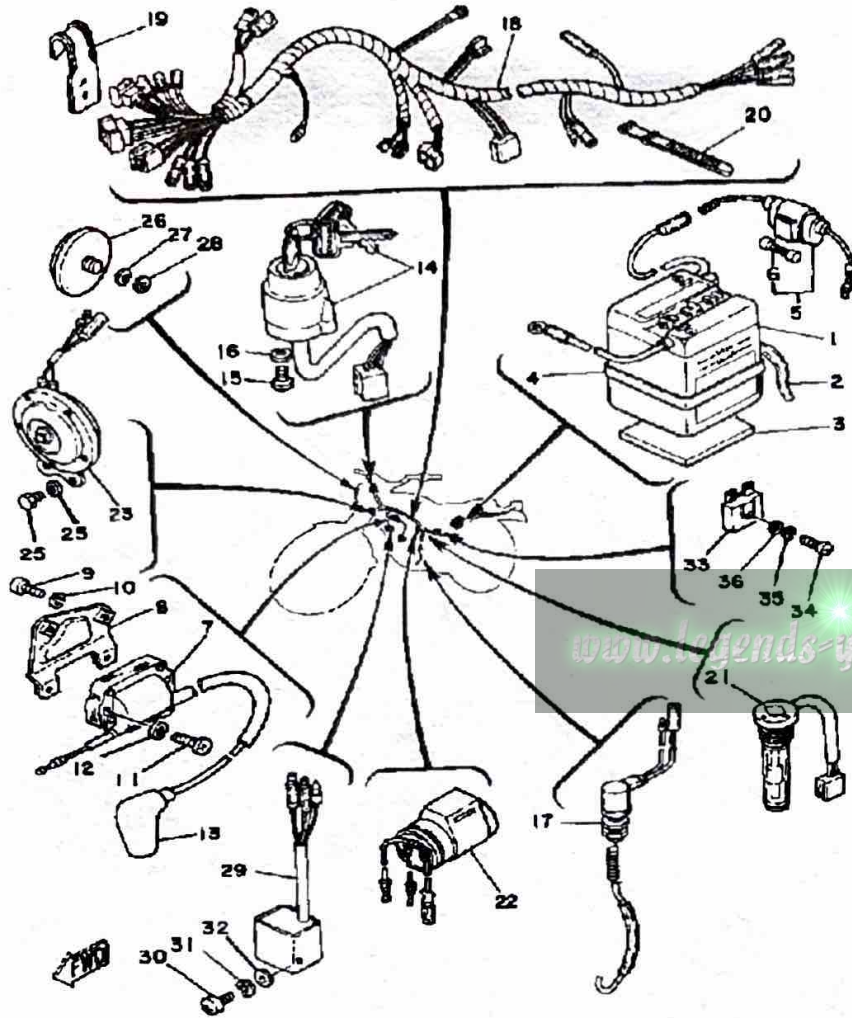
# ELECTRICAL -1 DT80H



Ref. No.	Part Number	Description	Qty	Remarks
1	BTG-6N42A-20-00	GS 6N4-2A-2 (6N4-2A-2) (308-82110-10)	1	
2	90445-08172-00	HOSE	1	
3	583-24182-00-00	DAMPER, LOCATING 2	1	
4	(308-82124-00-00)	BAND, BATTERY	1	
5	55K-82150-01-00	FUSE HOLDER ASS'Y (55K-82150-00-00)	1	
6	116-82151-00-00	FUSE (10A)	1	
7	5G4-82310-40-00	IGNITION COIL ASSEMBLY (J17-82310-21)	1	
8	375-82316-01-00	BRACKET, IGN COIL	1	
9	98580-06012-00	SCREW, PAN HEAD	2	
10	92995-06100-00	WASHER, SPRING	2	
11	98511-06025-00	SCREW PAN HEAD (92501-06025)	2	
12	92995-06100-00	WASHER, SPRING	2	
13	56J-82370-00-00	PLUG CAP ASSEMBLY	1	
14	1FE-82510-00-00	MAIN SWITCH ASSEMBLY	1	
15	98580-05012-00	SCREW, PAN HEAD	2	
16	92990-05100-00	WASHER, SPRING	2	
17	353-82530-03-00	STOP SWITCH ASSEMBLY	1	
18	(3J8-82590-50-00)	WIRE HARNESS ASSEMBLY	1	
19	(2A3-82594-00-00)	CLAMP	1	
20	437-83936-11-00	BAND, SWITCH CORD	2	
21	2E7-84720-02-00	UNAVAILABLE IN PRICE BOOK	1	
22	2F7-83350-60-00	FLASHER RELAY ASSEMBLY	1	
23	2A7-83371-10-00	HORN	1	
24	97013-06012-00	BOLT	2	
25	92995-06100-00	WASHER, SPRING	2	
26	355-85111-01-00	REFLECTOR, FRONT 1	2	

CONTINUED ON NEXT FRAME ►

# ELECTRICAL -1 DT80H

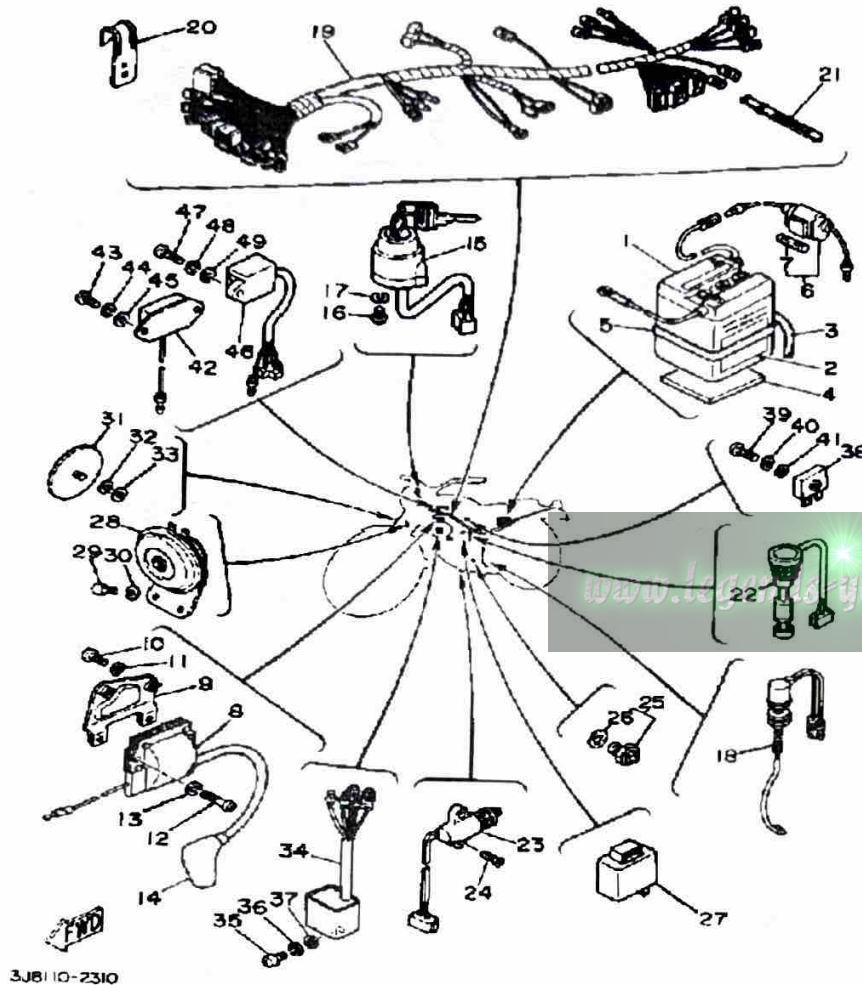


Ref. No.	Part Number	Description	Qty	Remarks
27	92990-05100-00	WASHER, SPRING .....	2	
28	92990-05200-00	WASHER, PLAIN .....	2	
29	3A3-85540-20-00	CDI UNIT ASSEMBLY .....	1	
30	98503-06014-00	SCREW, PAN HEAD (92502-06016) .....	1	
31	92995-06100-00	WASHER, SPRING .....	1	
32	(90201-06600-00)	WASHER, PLATE .....	1	
33	353-81970-63-00	RECTIFIER ASSEMBLY .....	1	U.R.
34	98580-05020-00	SCREW, PAN HEAD .....	1	
35	92990-05100-00	WASHER, SPRING .....	1	
36	92901-05600-00	WASHER, PLATE .....	1	

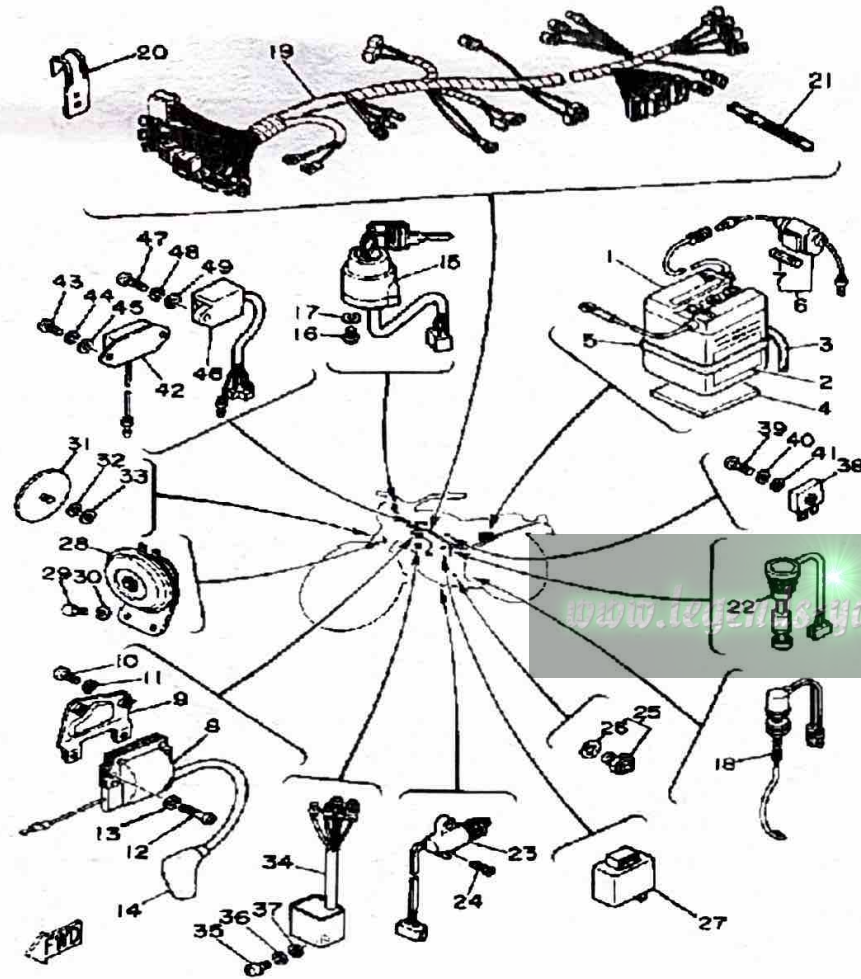
# ELECTRICAL 1 DT80J - K

Ref. No.	Part Number	Description	Qty	Remarks
1	BTG-6N42A-20-00	GS 6N4-2A-2 (6N4-2A-2) (308-82110-10)	1	
2	118-82141-09-00	LABEL, BATTERY	1	
3	90445-08172-00	HOSE	1	
4	583-24182-00-00	DAMPER, LOCATING 2	1	
5	(308-82124-00-00)	BAND, BATTERY	1	
6	55K-82150-01-00	FUSE HOLDER ASS'Y (55K-82150-00-00)	1	
7	116-82151-00-00	. FUSE (10A)	1	
8	5G4-82310-40-00	IGNITION COIL ASSEMBLY (J17-82310-21)	1	
9	375-82316-01-00	BRACKET, IGN COIL	1	
10	98580-06012-00	SCREW, PAN HEAD	2	
11	92995-06100-00	WASHER, SPRING	2	
12	98511-06025-00	SCREW PAN HEAD (92501-06025)	2	
13	92995-06100-00	WASHER, SPRING	2	
14	56J-82370-00-00	PLUG CAP ASSEMBLY	1	
15	1FE-82510-00-00	MAIN SWITCH ASSEMBLY	1	
16	98580-05012-00	SCREW, PAN HEAD	2	
17	92990-05100-00	WASHER, SPRING	2	
18	353-82530-03-00	STOP SWITCH ASSEMBLY	1	
19	(3J8-82590-51-00)	WIRE HARNESS ASSEMBLY	1	
20	(2A3-82594-00-00)	CLAMP	1	
21	437-83936-11-00	BAND, SWITCH CORD	2	
22	2E7-85720-02-00	OIL LVL GAUGE ASSEMBLY	1	
23	3J8-82566-01-00	SWITCH, SIDE STAND	1	
24	98706-05016-00	SCREW, FLAT HEAD	2	
25	2H7-82540-00-00	NEUTRAL SWITCH ASSEMBLY	1	
26	341-82543-00-00	. GASKET	1	

CONTINUED ON NEXT FRAME ►



# ELECTRICAL 1 DT80J - K

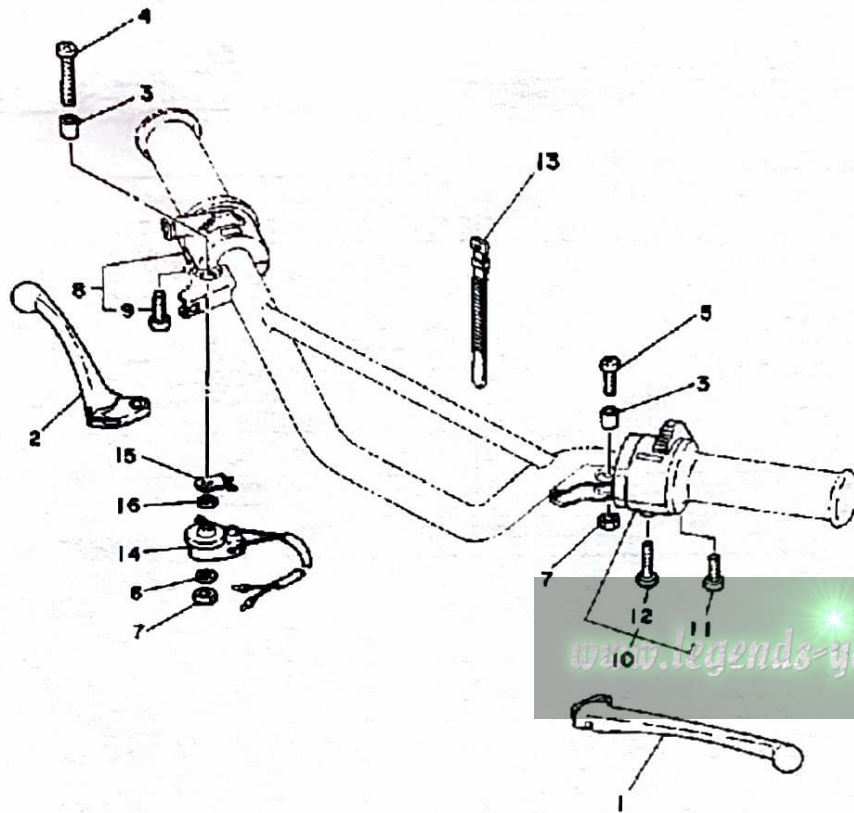


3J8110-2310

Ref. No.	Part Number	Description	Qty	Remarks
27	2F7-83350-60-00	FLASHER RELAY ASSEMBLY	1	
28	2A7-83371-10-00	HORN	1	
29	97013-06012-00	BOLT	2	
30	92995-06100-00	WASHER, SPRING	2	
31	355-85111-01-00	REFLECTOR, FRONT 1	2	
32	92990-05100-00	WASHER, SPRING	2	
33	92990-05200-00	WASHER, PLAIN	2	
34	3A3-85540-20-00	CDI UNIT ASSEMBLY	1	
35	98503-06014-00	SCREW, PAN HEAD (92502-06016)	1	
36	92995-06100-00	WASHER, SPRING	1	
37	90201-061A5-00	WASHER, PLATE	1	
38	353-81970-63-00	RECTIFIER ASSEMBLY	1	UR
39	98580-05020-00	SCREW, PAN HEAD	1	
40	92990-05100-00	WASHER, SPRING	1	
41	92901-05600-00	WASHER, PLATE	1	
42	443-81910-62-00	VOLTAGE REG ASSEMBLY (498-81910-23)	1	
43	98580-06012-00	SCREW, PAN HEAD	2	
44	92995-06100-00	WASHER, SPRING	2	
45	90201-061A5-00	WASHER, PLATE	2	
46	3Y1-85590-M0-00	CONTROL UNIT ASSEMBLY	1	
	4Y3-85590-M0-00	CONTROL UNIT ASSEMBLY	1	
47	98580-06020-00	SCREW	1	
48	92995-06100-00	WASHER, SPRING	1	
49	90201-061A5-00	WASHER, PLATE	1	



# HANDLE SWITCH - LEVER DT80J - K



Ref. No.	Part Number	Description	Qty	Remarks
1	137-83912-02-38	LEVER L .....	1	CLEAR BUFF
2	2N3-83922-00-00	LEVER R .....	1	CLEAR BUFF
3	90387-05383-00	COLLAR .....	2	
4	90157-05006-00	SCREW, PAN HEAD (803-83915-00) .....	1	
5	98501-05018-00	SCREW, PAN HEAD .....	1	
6	92990-05200-00	WASHER, PLAIN .....	1	
7	95601-05100-00	NUT, U .....	2	
8	462-83976-01-00	SWITCH, HANDLE 1 .....	1	
9	90157-05027-00	SCREW, PAN HEAD .....	2	
	98580-05020-00	SCREW, PAN HEAD .....	2	
10	3J8-83973-00-00	SWITCH, HANDLE 3 .....	1	
11	90157-05027-00	SCREW, PAN HEAD .....	1	
	98580-05020-00	SCREW, PAN HEAD .....	1	
12	98501-05030-00	SCREW, PAN HEAD .....	1	
13	437-83936-01-00	BAND, SWITCH CORD .....	2	
14	232-83980-30-00	STOP SWITCH ASSEMBLY ...	1	
15	(338-83983-00-00)	BRKT, FRT STOP SWCH .....	1	
16	90201-05027-00	WASHER, PLATE .....	1	

3.8110-2320

## DT80H 1981 SERVICE DATA

<b>MODEL - IBM I.D. NUMBER</b>	DT80H	3JB
Initial Engine Number / Frame Number	3JB-100101 / 3JB-100101	
Basic Color(s)	Chappy Red	
Fuel Type / Fuel Tank Capacity / Reserve Capacity	Regular / 4.8 Lit. (1.3 Gal.) / 0.5 Lit. (0.1 Gal.)	
Dry Vehicle Weight	84 kg (141 lbs.)	
<b>ENGINE TYPE</b>	2-Stroke, Air-Cooled, Reed Valve	
Bore/Stroke/Number Cylinders/Displacement (cc)	47mm / 42mm / 1 / 72cc	
Compression Ratio/Compression Pressure Min~Max	9.5:1 / (6.9:1 Corrected) / NA	
Piston Skirt Clearance New / Max	0.035 ~ 0.040mm / 0.1mm	
Ring End Gap Top / 2nd / 3rd	0.15 ~ 0.35mm / 0.15 ~ 0.35mm / $\emptyset$	
Valve Clearance (Cold) Intake / Exhaust	$\emptyset$	
Oil Pressure Hot / rpm	$\emptyset$	
Oiling System	Autokube	
Capacity: Dry	0.7 Lit. (0.74 Qt.)	
Oil and Filter Change	$\emptyset$	
Oil Change	$\emptyset$	
Lubricant: Temp. Above 5°C (40°F)	Yamalube 2* or Equivalent	
Temp. Below 15°C (60°F)	Yamalube 2* or Equivalent	
<b>AUTOLUBE - Min Stroke / Color Code</b>	0.20 ~ 0.25mm / Yellow	
Minimum Output @ 200 Cycles	0.50cc	
Maximum Output @ 200 Cycles	4.28cc	
<b>CARBURETOR - Mfr. / Type / I.D. Number</b>	Teiksei / Y16P-3A / 3JB-60	
Main Jet / Pilot Jet	85 / 32	
Needle Jet / Jet Needle-Clip Position	2.095 / 3N21 Fixed	
Slide Cutaway or Throttle Valve	2.0	
Float Level / Fuel Level	22.0mm $\pm$ 0.5mm / NA	
Idle rpm	1250 ~ 1400 rpm	
Max CO* / Max HC* / Set CO	$\emptyset$	
<b>SUSPENSION</b>		
Front Forks: Oil Type / Level / Qty	10 Wt. Fork Oil* / $\emptyset$ / 112 $\pm$ 4cc	
Gas Pressure	$\emptyset$	
Spring Length Std	386mm	
Monoshock: Oil Type / Qty	$\emptyset$	
Gas Pressure	$\emptyset$	
Minimum Brake Lining Thickness	Front: 2.0mm Rear: 2.0mm	
Tire Size (Nominal Pressure)	F250-15 (1.5 kg/cm <sup>2</sup> /21 psi) R275-14 (2.3 kg/cm <sup>2</sup> /32 psi)	
<b>TRANSMISSION - Oil Type/Qty Chg/Qty Reassemble</b>	Yamalube 4* or SAE 10W30 SE / 550cc / 600cc	
Primary Drive Type / Teeth / Ratio	Helical Gear / 68-19 / 3.578	
Secondary Drive Type / Teeth / Chain	Chain / 41-14 / DK420-92L	
Clutch Friction Plate Thickness Std ~ Min	3.5 ~ 3.2mm	
Clutch Spring Length Std ~ Min	31.5 ~ 30.5mm	
Middle Gear Case Capacity	$\emptyset$	
Final Gear Case Capacity	$\emptyset$	
Gear Case Lubricant: Temp. Above 5°C (40°F)	$\emptyset$	
Temp. Below 15°C (60°F)	$\emptyset$	
All Weather Conditions	$\emptyset$	

<b>CHARGING SYSTEM</b>	Flywheel Magneto / Single Phase / Half Wave
Battery: Model / Specific Gravity / Charge Rate	GS 6N4-2A-2 (8V 4A) / 1.28 / 0.4A
Maximum Output	7.5V 3.5A @ 8000 rpm
<b>TROUBLESHOOTING</b>	
Field Coil Color Code / $\Omega$	$\emptyset$
Charge Coil Color Code / $\Omega$	Grn-Red ~ Gnd / 0.32 $\Omega$ $\pm$ 10%
<b>IGNITION SYSTEM</b>	Capacitor-Discharge Ignition
Ignition Timing	21° BTDC @ 2000 rpm (1.8mm BTDC)
Spark Plug Type	NGK B7HS
Spark Plug Gap / Torque / Cap $\Omega$	0.5 ~ 0.7mm / 2.5 m·kg / 5K $\Omega$ $\pm$ 10%
Point Gap / Condenser Capacitance	$\emptyset$ / $\emptyset$
<b>TROUBLESHOOTING</b>	
Ignition Coil Test Gap / Primary $\Omega$ / Secondary $\Omega$	8mm / 1.0 $\Omega$ $\pm$ 10% / 5.9K $\Omega$ $\pm$ 20%
Pulser Coil or Pickup Coil Color Code / $\Omega$	Wht-Red ~ Gnd / 10 $\Omega$ $\pm$ 10%
Source Coil Color Code / $\Omega$	Brn ~ Gnd / 300 $\Omega$ $\pm$ 10%
<b>LIGHTING SYSTEM</b>	
Headlight / Taillight / Signal Rating	6V30 30W / 5V25-5.3W / 6V17W
<b>TROUBLESHOOTING</b>	
Lighting Coil Color Code / $\Omega$	Yel ~ Gnd / 0.22 $\Omega$ $\pm$ 10%
<b>TORQUE VALUES</b>	
Front Axle Nut	10 x 1.25: 4.0 m·kg
Front Axle Holder Nut	$\emptyset$
Rear Axle Nut	12 x 1.25: 6.0 m·kg
Rear Axle Pinch Bolt	$\emptyset$
Clutch Nut	12 x 1.0: 4.5 m·kg
Drain Plug	12 x 1.5: 2.0 m·kg
Cylinder Head Cover	$\emptyset$
Cylinder Head:	8 x 1.0: 1.0 m·kg
Engine Mounting Bolts: Front, Upper	8 x 1.25: 2.5 m·kg
Rear, Upper	8 x 1.25: 2.5 m·kg
Rear, Lower	8 x 1.25: 2.5 m·kg

SERVICE COPY	SER MGR	MECH	MECH	MECH	BINDER
OFFICE COPY	GEN MGR	SALES	PARTS	BINDER	PAGE 1 OF 2

$\emptyset$  = Does Not Apply To This Model  
NA = Information Not Available

\*Available From Yamaha Parts Distributors Inc.  
\*For Diagnostic Use Only

## DT80J

### 1982 SERVICE DATA

<b>Model / S.M. I.D. NUMBER</b>	DT80J	3J8
Initial Engine Number / Frame Number	3J8-150101 / 3J8-150101	
Basic Color(s)	Chappy Red	
Fuel Type / Fuel Tank Capacity / Reserve Capacity	Regular / 4.8 Lit. / 0.5 Lit.	
Dry Vehicle Weight	64 kg	
<b>ENGINE TYPE</b>	2-Stroke, Air-Cooled, Reed Valve	
Bore/Stroke/Number Cylinders/Displacement (cc)	47mm / 42mm / 1 / 72cc	
Compression Ratio/Compression Pressure Min~Max	6.9:1 / NA	
Piston Skirt Clearance New ~ Max	0.035 ~ 0.040mm / 0.1mm	
Ring End Gap Top / 2nd / 3rd	0.15 ~ 0.35mm / 0.16 ~ 0.35mm / $\emptyset$	
Valve Clearance (Cold) Intake / Exhaust	$\emptyset$	
Oil Pressure Hot / rpm	$\emptyset$	
Oiling System	Autolube	
Capacity: Dry	0.7 Lit.	
Oil and Filter Change	$\emptyset$	
Oil Change	$\emptyset$	
Lubricant: Temp. Above 5°C (40°F)	Yamalube 2" or Equivalent	
Temp. Below 15°C (60°F)	Yamalube 2" or Equivalent	
Oil Life - Min Stroke / Color Code	0.18 ~ 0.27mm / Yellow	
Minimum Output @ 200 Cycles	0.50cc	
Maximum Output @ 200 Cycles	4.28cc	
<b>VALVE ADJUSTER - Mt. / Type / I.D. Number</b>	Teitel / Y16P-3A / 3J8-60	
Main Jet / Pilot Jet	86 / 32	
Needle Jet / Jet Needle-Clip Position	2.095 / 3N21 Fixed	
Slide Cutaway or Throttle Valve	2.0	
Floot Level / Fuel Level	22.0mm $\pm$ 1.0mm / NA	
Idle rpm	1250 ~ 1400 rpm	
Max CO* / Max HC* / Set CO	$\emptyset$	
<b>CHASSIS</b>		
Front Forks: Oil Type / Level / Qty	10 Wt. Fork Oil* / $\emptyset$ / 112cc $\pm$ 4cc	
Gas Pressure	$\emptyset$	
Spring Length Std	386mm	
Monoshock: Oil Type / Qty	$\emptyset$	
Gas Pressure	$\emptyset$	
Minimum Brake Lining Thickness	Front: 2.0mm Rear: 2.0mm	
Tire Size (Nominal Pressure)	F: 2.50-15 (1.5 kg/cm <sup>2</sup> ) R: 2.75-14 (2.3 kg/cm <sup>2</sup> )	
<b>LUBRICANTS - Oil Type/Qty Chg/Qty Reassemble</b>	Yamalube 4" or SAE 10W30 SE / 550cc / 600cc	
Primary Drive Type / Teeth / Ratio	Helical Gear / 68-19 / 3.578	
Secondary Drive Type / Teeth / Chain	Chain / 41-14 / DK420-92L	
Clutch Friction Plate Thickness Std ~ Min	3.5 ~ 3.2mm	
Clutch Spring Length Std ~ Min	31.5 ~ 30.5mm	
Middle Gear Case Capacity	$\emptyset$	
Final Gear Case Capacity	$\emptyset$	
Gear Case Lubricant: Temp. Above 5°C (40°F)	$\emptyset$	
Temp. Below 15°C (60°F)	$\emptyset$	
All Weather Conditions	$\emptyset$	

SERVICE COPY	SER MGR	MECH	MECH	MECH	BINDER
OFFICE COPY	GEN MGR	SALES	PARTS	BINDER	PAGE 1 OF 2

<b>CHARGING SYSTEM</b>	Flywheel Magneto / Single Phase / Half Wave
Battery: Model / Specific Gravity / Charge Rate	GS 6N4-2A-2 (6V 4A) / 1.26 / 0.4A
Maximum Output	7.5V 3.5A @ 8000 rpm
<b>TROUBLESHOOTING</b>	
Field Coil Color Code / $\Omega$	$\emptyset$
Charge Coil Color Code / $\Omega$	Grn-Red ~ Gnd / 0.32 $\Omega$ $\pm$ 10%
<b>IGNITION SYSTEM</b>	Capacitor-Discharge Ignition
Ignition Timing	21° BTDC @ 2000 rpm
	1.8mm BTDC
Spark Plug Type	NGK B7HS
Spark Plug Gap / Torque / Cap $\Omega$	0.5 ~ 0.7mm / 2.5 m-kg / 5K $\Omega$ $\pm$ 10%
Point Gap / Condenser Capacitance	$\emptyset$ / $\emptyset$
<b>TROUBLESHOOTING</b>	
Ignition Coil Test Gap / Primary $\Omega$ / Secondary $\Omega$	6mm / 1.0 $\Omega$ $\pm$ 10% / 5.9K $\Omega$ $\pm$ 20%
Pulser Coil or Pickup Coil Color Code / $\Omega$	Whi-Red ~ Blk / 10 $\Omega$ $\pm$ 10%
Source Coil Color Code / $\Omega$	Brn ~ Gnd / 300 $\Omega$ $\pm$ 10%
<b>LIGHTING SYSTEM</b>	
Headlight / Taillight / Signal Rating	6V30 30W / 6V25-5.3W / 6V17W
<b>TROUBLESHOOTING</b>	
Lighting Coil Color Code / $\Omega$	Yel ~ Gnd / 0.22 $\Omega$ $\pm$ 10%
<b>TORQUE VALUES</b>	
Front Axle Nut	10 x 1.25: 4.0 m-kg
Front Axle Holder Nut	$\emptyset$
Rear Axle Nut	12 x 1.25: 6.0 m-kg
Rear Axle Pinch Bolt	$\emptyset$
Clutch Nut	12 x 1.0: 4.5 m-kg
Drain Plug	12 x 1.5: 2.0 m-kg
Cylinder Head Cover	$\emptyset$
Cylinder Head:	6 x 1.0: 1.0 m-kg
Engine Mounting Bolts: Front, Upper	8 x 1.25: 2.5 m-kg
Rear, Upper	8 x 1.25: 2.5 m-kg
Rear, Lower	8 x 1.25: 2.5 m-kg

$\emptyset$  = Does Not Apply to This Model  
NA = Information Not Available

\*Available From Yamaha Parts Distributors Inc.  
\*For Diagnostic Use Only

**SERVICE LITERATURE**

PUBLICATION	PART NUMBER	REMARKS
Owner's Manual	LIT-11626-03-05	
Service Manual	LIT-11616-GT-81	Same as GT80G
Assembly Manual	LIT-11666-01-68	Same as GT80G, Supp. to GT80E (01-06)
Consumer Information	LIT-11666-03-05	

