



YAMAHA

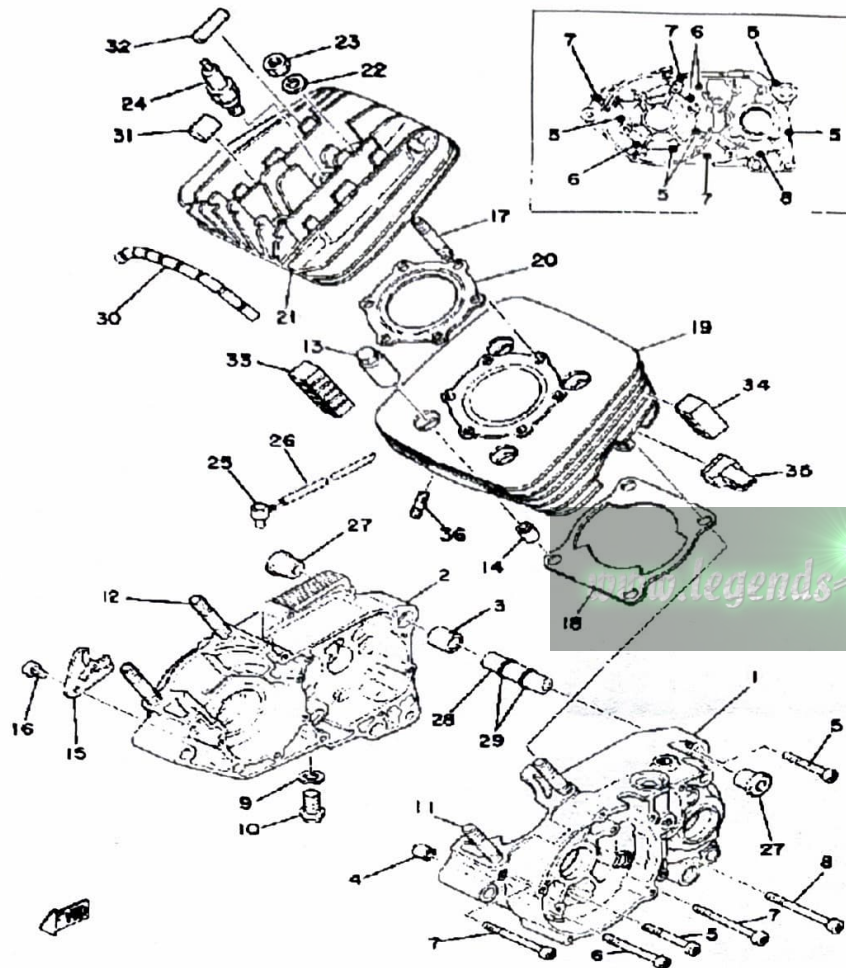
GENUINE

PARTS CATALOGUE

MOTORCYCLE

www.legends-yamaha-enduros.com

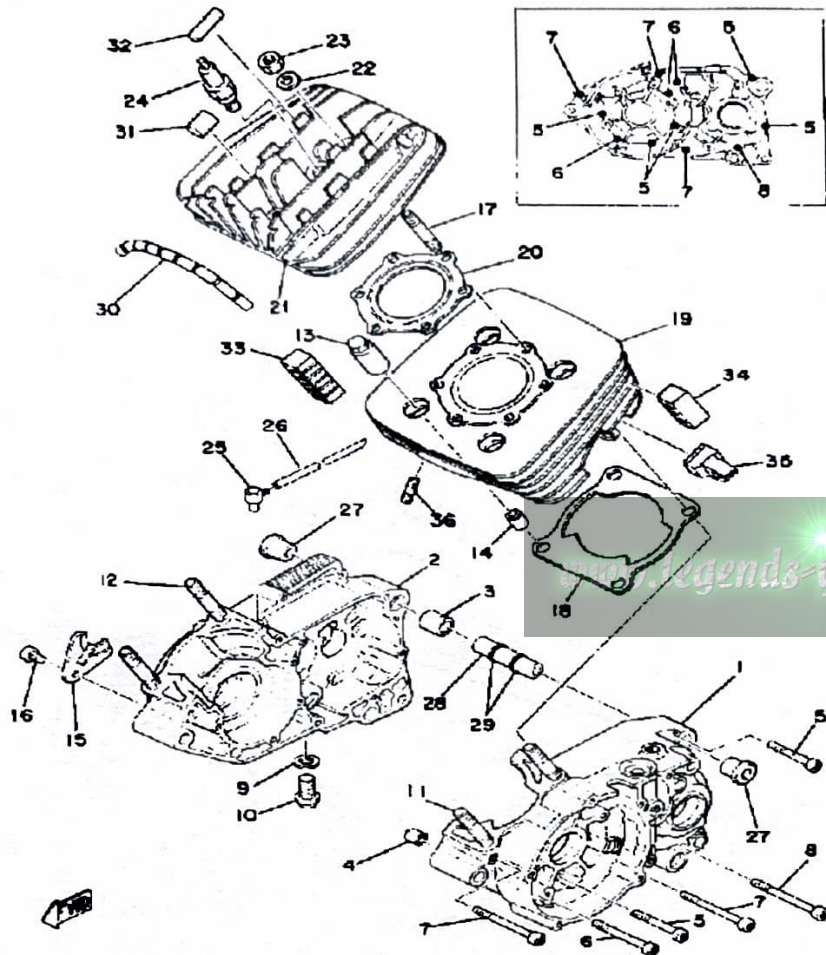
CRANKCASE - CYLINDER



Ref. No.	Part Number	Description	Qty	Remarks
1	(2A6-15111-02-00)	CRANKCASE 1	1	
2	2A6-15121-01-00	CRANKCASE 2	1	
3	99510-20020-00	PIN, DOWEL	1	
4	99530-10014-00	PIN, DOWEL	1	
5	98580-06550-00	SCREW PAN HEAD (92503-06050)	5	
6	92580-06560-00	SCREW PAN HEAD	3	
7	98501-06070-00	SCREW, PAN HEAD	3	
8	98501-06075-00	SCREW, PAN HEAD	1	
9	90430-12207-00	GASKET	1	
10	90340-12005-00	PLUG, DRAIN	1	
11	95611-10630-00	BOLT, STUD	2	
12	95611-10640-00	BOLT, STUD	2	
13	90179-10201-00	NUT	4	
14	99530-14016-00	PIN, DOWEL	2	
15	304-15128-00-00	HOLDER	1	
16	92501-08010-00	SCREW, PAN HEAD	1	
17	90116-08104-00	BOLT, STUD	6	
18	18G-11351-01-00	GASKET, CYLINDER	1	
19	2A7-11311-00-00	CYLINDER 1	1	
20	1W2-11181-00-00	GASKET, CYLINDER HEAD 1	1	
21	2A7-11111-00-00	HEAD, CYLINDER 1	1	
22	90201-08100-00	WASHER, PLATE	6	
23	95333-08600-00	NUT	6	
24	NGK-B8ES0-00-00	PLUG, SPARK (NGK B8ES)	1	SEE M7-068
25	583-15371-00-00	BREATHER	1	
26	90445-07340-00	HOSE	1	
27	328-15316-00-00	DAMPER, ENG MOUNT 1 (328-15316-00)	2	

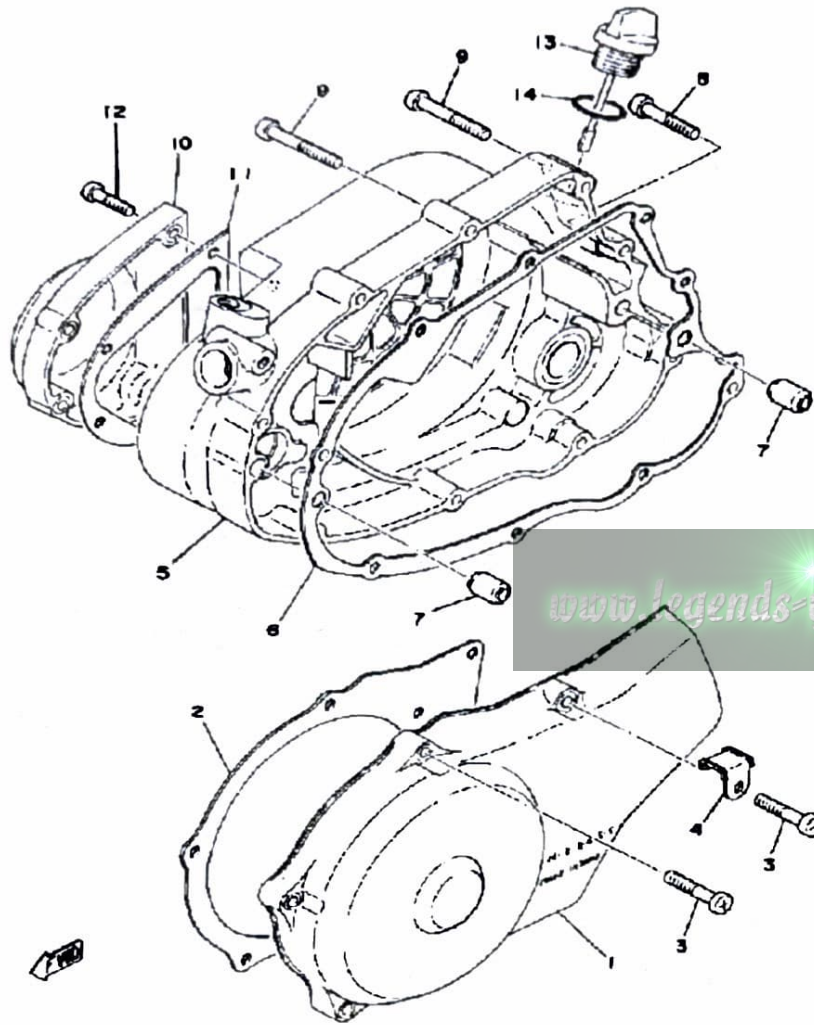
CONTINUED ON NEXT FRAME ►

CRANKCASE - CYLINDER



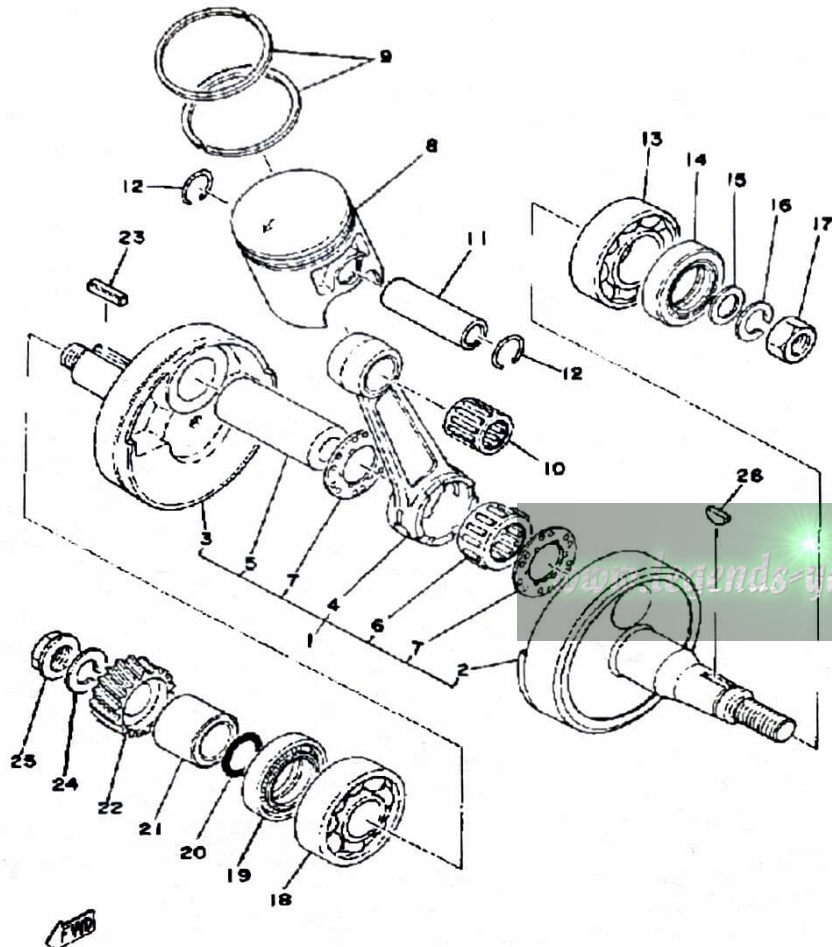
Ref. No.	Part Number	Description	Qty	Remarks
28	401-15317-00-00	SPACER, ENG MOUNT	1	
29	93210-11073-00	O-RING	2	
30	2A6-11161-00-00	ABSORBER 1	1	
31	2A6-11162-00-00	ABSORBER 2	1	
32	3LN-2139U-00-00	ABSORBER 2	2	
33	2A6-11127-00-00	ABSORBER 3	2	
34	2A6-11127-00-00	ABSORBER 3	2	
35	2A6-11129-00-00	ABSORBER 5	1	
36	90116-06016-00	BOLT, STUD	2	
	NGK-B8ES0-00-00	PLUG, SPARK (NGK B8ES)	1	
	NGK-B9ES0-00-00	NGK B9ES 10PK	1	

CRANKCASE COVER



Ref. No.	Part Number	Description	Qty	Remarks
1	2A7-15411-01-00	COVER, CRANKCASE L	1	
2	2A6-15455-01-00	GASKET 1	1	
3	98511-06025-00	SCREW PAN HEAD (92501-06025)	6	
4	2A6-15484-01-00	CLAMP 2	1	
5	2A6-15431-00-00	COVER, CRANKCASE 3	1	
6	18G-15451-01-00	GASKET, CRCS. COVER	1	
7	99530-10014-00	PIN, DOWEL	2	
8	98580-06030-00	SCREW PAN HEAD	3	
9	98580-06040-00	SCREW, pan head (92501-06040-00)	6	
10	2A6-15416-00-00	COVER, OIL PUMP	1	
11	2A6-15456-00-00	GASKET, O/PMP CVR 1	1	
12	98511-06025-00	SCREW PAN HEAD (92501-06025)	4	
13	401-15362-00-00	PLUG, OIL LEVEL	1	
14	93210-19123-00	O-RING	1	

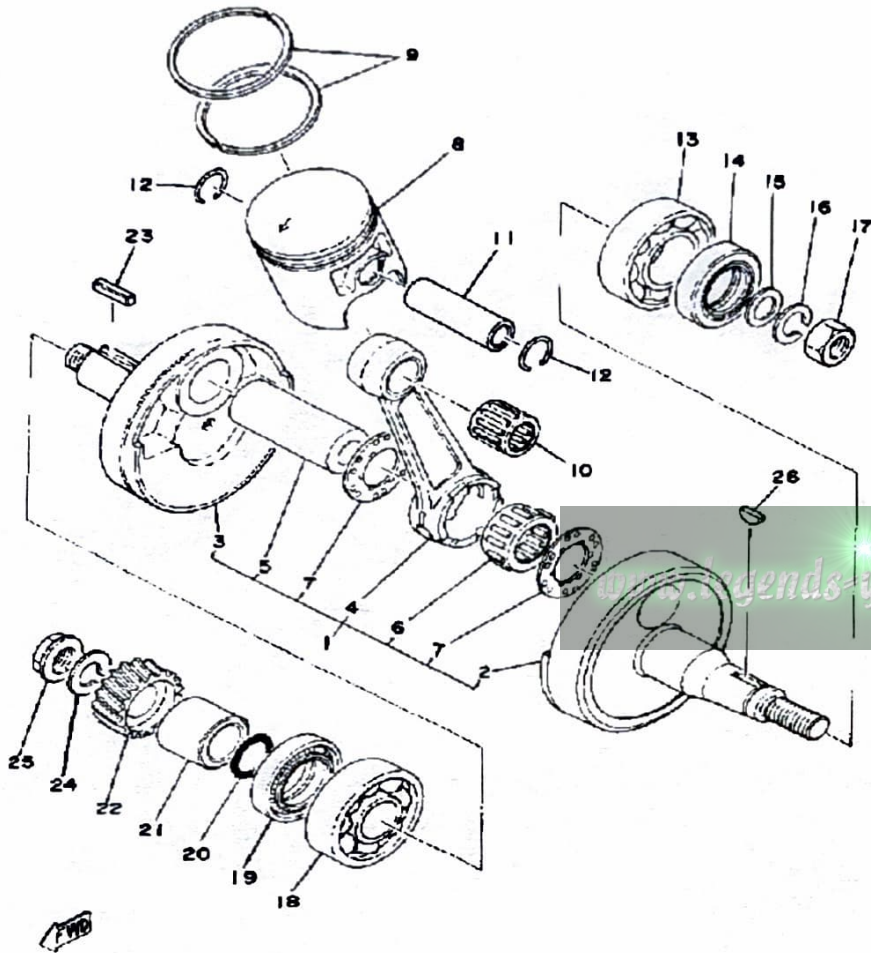
CRANK - PISTON



Ref. No.	Part Number	Description	Qty	Remarks
1	2N4-11400-00-00	CRANKSHAFT ASSEMBLY ...	1	
2	1W1-11412-01-00	. CRANK 1	1	
3	1W1-11422-01-00	. CRANK 2	1	
4	25V-11651-00-00	. ROD, CONNECTING 1	1	
5	3M5-11681-00-00	. PIN, CRANK 1	1	
6	93310-42277-00	. BEARING, CYLINDER.#10 (93310-42231)	1	
7	90209-22248-00	. WASHER	2	
8	2N5-11631-00-96	PISTON STD (2A7-11631-00-96)	1	
	2N5-11635-00-00	PISTON 1 O/S 0.25 (2A7-11635-00)	1	ALTERNATE PART
	2N5-11636-00-00	PISTON 2 O/S 0.50 (2A7-11636-00)	1	ALTERNATE PART
	2N5-11637-00-00	PISTON 3 O/S 0.75 (2A7-11637-00)	1	ALTERNATE PART
	2N5-11638-00-00	PISTON 4 O/S 1.00 (2A7-11638-00)	1	ALTERNATE PART
9	2N5-11610-00-00	PISTON RINGSET STD	1	
	2N5-11610-10-00	PISTON RINGSET 1ST	1	ALTERNATE PART
	2N5-11610-20-00	PISTON RINGSET 2ND	1	ALTERNATE PART
	2N5-11610-30-00	PISTON RINGSET 3RD	1	ALTERNATE PART
	2N5-11610-40-00	PISTON RINGSET 4TH	1	ALTERNATE PART
10	93310-216E1-00	BEARING	1	
11	251-11633-00-00	PIN, PISTON	1	
12	93450-17044-00	CIRCLIP	2	
13	93306-20529-00	BEARING (B6205C4)	1	
14	93102-25061-00	OIL SEAL, SD-TYPE	1	
15	90201-12593-00	WASHER, PLATE	1	
16	92901-12100-00	WASHER, SPRING	1	
17	90170-12347-00	NUT, HEXAGON	1	

CONTINUED ON NEXT FRAME ►

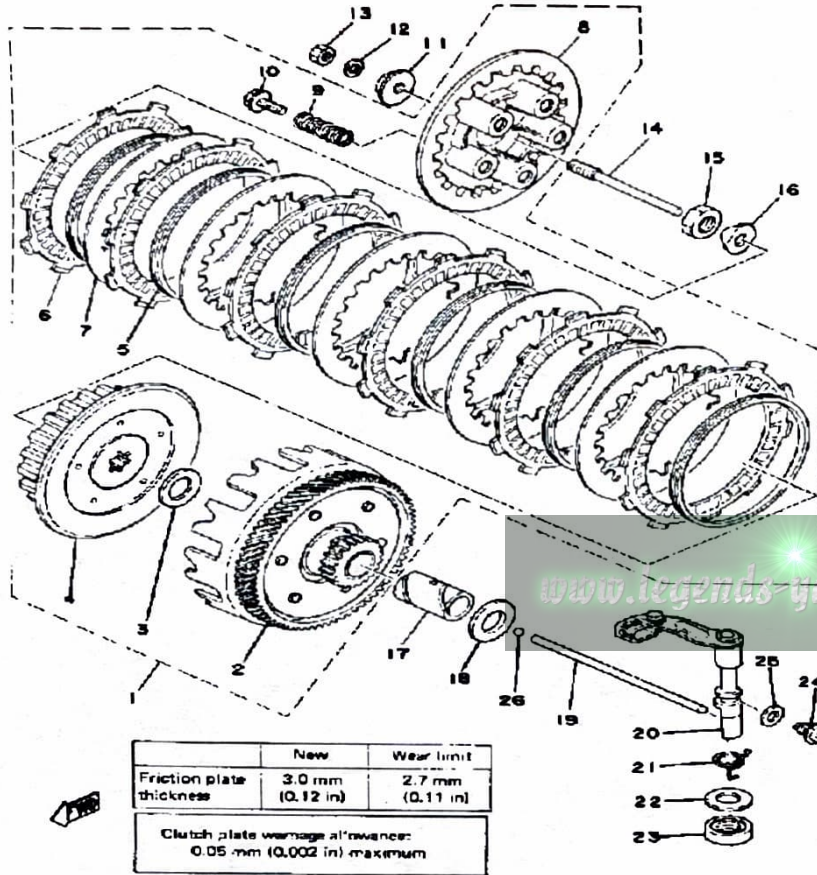
CRANK - PISTON



Ref. No.	Part Number	Description	Qty	Remarks
18	93306-30421-00	BEARING (B6304C3)	1	
19	93103-28011-00	OIL SEAL	1	
20	93210-180A6-00	O-RING	1	
21	90387-20488-00	COLLAR	1	
22	2A6-16111-00-00	GEAR, PRI DRIVE	1	
23	90282-05005-00	KEY, STRAIGHT	1	
24	90204-12007-00	WASHER, SPRING	1	
25	90179-12244-00	NUT, SPEC"L SHAPE	1	
26	90280-03017-00	KEY, WOODRUFF	1	

www.legend-yamaha-enduros.com

CLUTCH

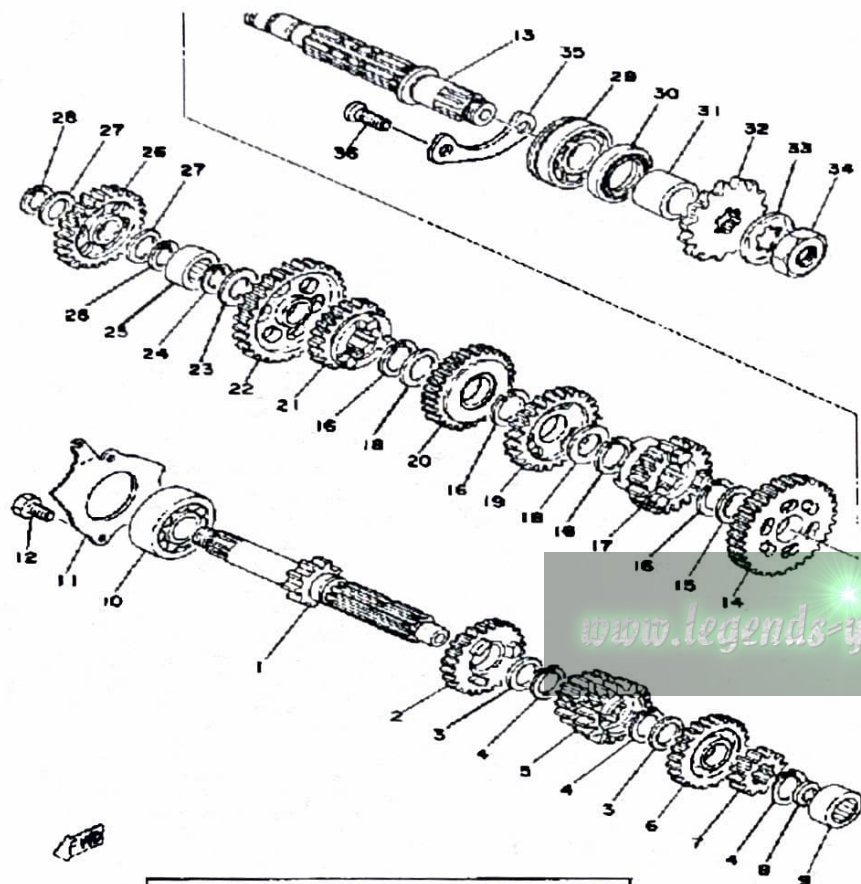


	New	Wear limit
Friction plate thickness	3.0 mm (0.12 in)	2.7 mm (0.11 in)

Clutch plate warpage allowance:
0.05 mm (0.002 in) maximum

Ref. No.	Part Number	Description	Qty	Remarks
1	3J1-16300-00-00	CLUTCH ASSEMBLY CLUTCH ASSEMBLY (2A7-16301-00) . . .	1	
2	2A7-16150-00-00	. PRI DRVN GEAR COMP. (71T)	1	
3	90201-17543-00	. WASHER, PLATE	1	
4	1G8-16371-00-00	. BOSS, CLUTCH	1	
5	307-16367-00-00	. RING, CUSHION	6	
6	559-16321-01-00	. PLATE, FRICTION	6	
7	2A6-16324-00-00	. PLATE, CLUTCH 1	5	
8	1W1-16351-00-00	. PLATE, PRESSURE 1	1	
9	90501-20474-00	. SPRING, COMPRESSION	5	
10	90159-05011-00	. SCREW, WITH WASHER	5	
11	30X-16358-00-00	PLATE, PUSH	1	
12	92990-06200-00	WASHER	1	
13	95380-06600-00	NUT	1	
14	1W1-16356-02-00	ROD, PUSH 1	1	
15	90170-14171-00	NUT	1	
16	90215-14204-00	WASHER, LOCK	1	
17	90560-17147-00	SPACER	1	
18	90201-174E1-00	WASHER, PLATE	1	
19	1W1-16357-00-00	ROD, PUSH 2	1	
20	(1W1-16380-00-00)	PUSH LEVER ASSEMBLY	1	
21	90508-20345-00	SPRING, TORSION	1	
22	90201-14217-00	WASHER, PLATE	1	
23	93104-14059-00	OIL SEAL, SO-TYPE	1	
24	90149-08108-00	SCREW, SPEC'L SHAPE	1	
25	90430-08069-00	GASKET	1	
26	93503-16010-00	BALL	1	

TRANSMISSION



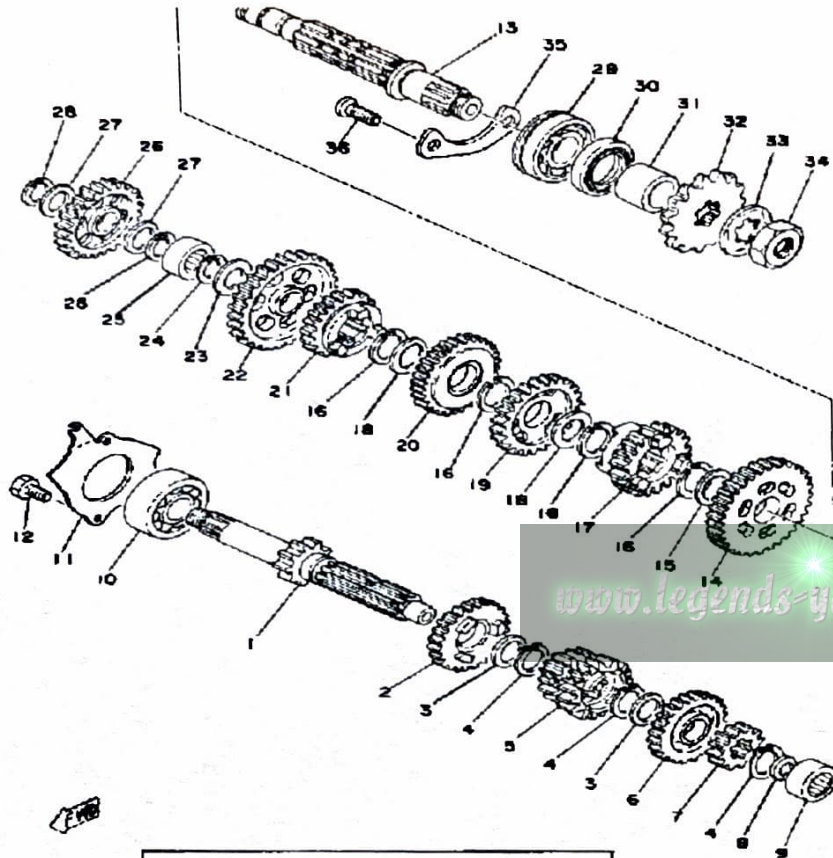
Recommended oil:
Yamalube 4-cycle oil or SAE
10W/30 "SE" motor oil

Transmission oil quantity:
Total (dry): 700 cc (740 US. qt)
Exchange: 650 cc (687.1 US. qt)
Transmission drain plug torque:
2.5 m·kg (18 ft·lb)

Ref. No.	Part Number	Description	Qty	Remarks
1	2A6-17411-00-00	AXLE, MAIN	1	
2	1W2-17151-00-00	GEAR, 5TH PINION	1	
3	90201-20266-00	WASHER, PLATE (1.0T)	2	
4	93410-20038-00	CIRCLIP	3	
5	2A6-17131-00-00	GEAR, 3RD PINION	1	
6	1W2-17161-00-00	GEAR, 6TH PINION	1	
7	2A6-17121-00-00	GEAR, 2ND PINION	1	
8	90201-15701-00	WASHER, PLATE (1.0T)	1	
9	93311-41530-00	BEARING	1	
10	93306-30309-00	BEARING	1	
11	1W1-17471-01-00	PLATE, COVER	1	
12	97013-06012-00	BOLT	2	
13	2A6-17421-00-00	AXLE, DRIVE	1	
14	2A6-17221-01-00	GEAR, 2ND WHEEL (2A6-17221-00)	1	
15	90201-22555-00	WASHER, PLATE	1	
16	93410-22039-00	CIRCLIP	4	
17	2A6-17261-00-00	GEAR, 6TH WHEEL	1	
18	90209-18135-00	WASHER	2	
19	1W2-17241-00-00	GEAR, 4TH WHEEL	1	
20	2A6-17231-00-00	GEAR, 3RD WHEEL	1	
21	2A6-17251-00-00	GEAR, 5TH WHEEL	1	
22	2A6-17211-01-00	GEAR, 1ST WHEEL (2A6-17211-00)	1	
23	90201-15701-00	WASHER, PLATE (1.0T)	1	
24	93440-15012-00	CIRCLIP	1	
25	93311-31567-00	BEARING, CYLINDRICAL	1	
26	525-15651-00-00	GEAR, KICK IDLE (25T)	1	
27	137-17417-00-05	SHIM 1 (0.5T)	2	

CONTINUED ON NEXT FRAME ►

TRANSMISSION



Ref. No.	Part Number	Description	Qty	Remarks
28	93440-15012-00	CIRCLIP	2	
29	93306-30411-00	BEARING (B6304)	1	
30	93102-26042-00	OIL SEAL	1	
31	90387-202A3-00	UNAVAILABLE IN PRICE BOOK (90387-20503)	1	
32	93822-16093-00	SPROCKET, DRIVE	1	
33	90215-16127-00	WASHER, LOCK	1	
34	90179-16226-00	NUT	1	
35	1W1-15381-00-00	PLATE, BRNG COVER	1	
36	98603-06012-00	SCREW, OVAL HEAD (92701-06012)	2	

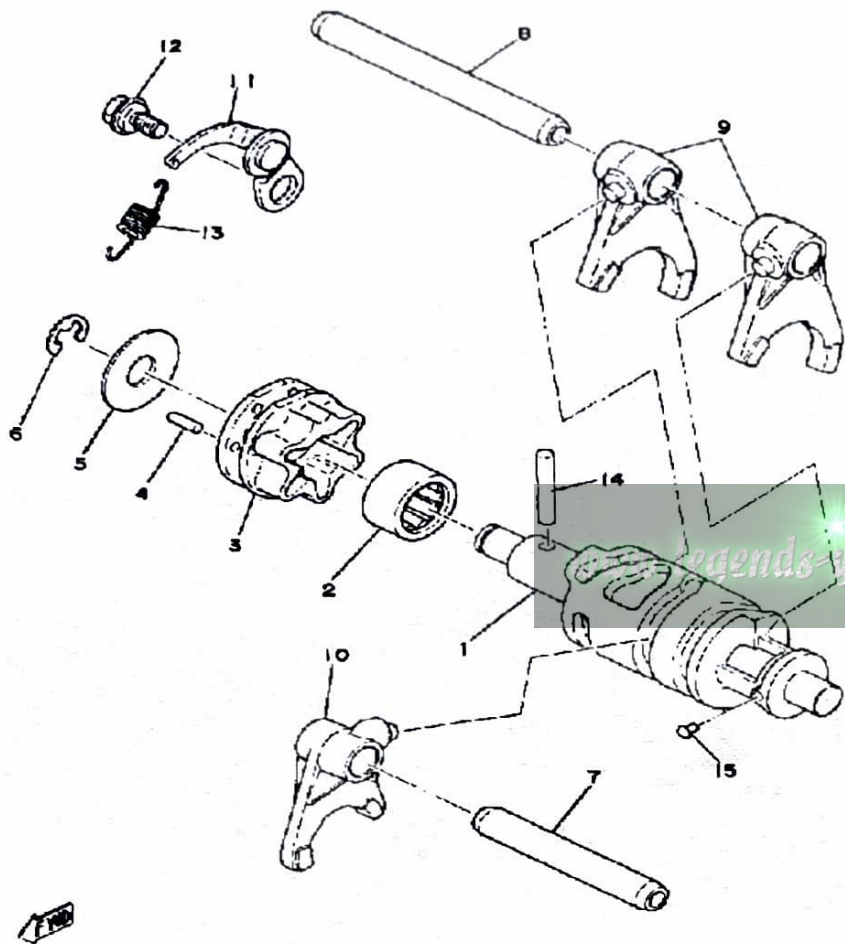
www.legends-yamaha-enduros.com

Recommended oil:
Yamalube 4-cycle oil or SAE 10W/30 "SE" motor oil

Transmission oil quantity:
Total (dry): 700 cc (740 US. qt)
Exchange: 650 cc (687.1 US. qt)

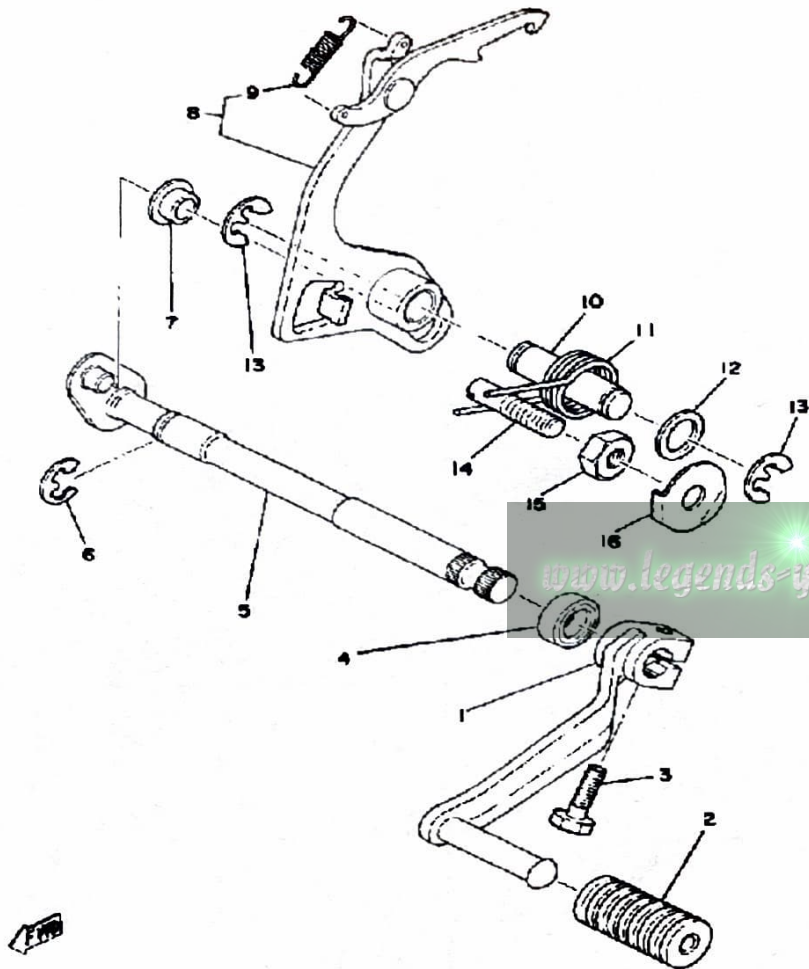
Transmission drain plug torque:
2.5 m·kg (18 ft·lb)

SHIFTER 1



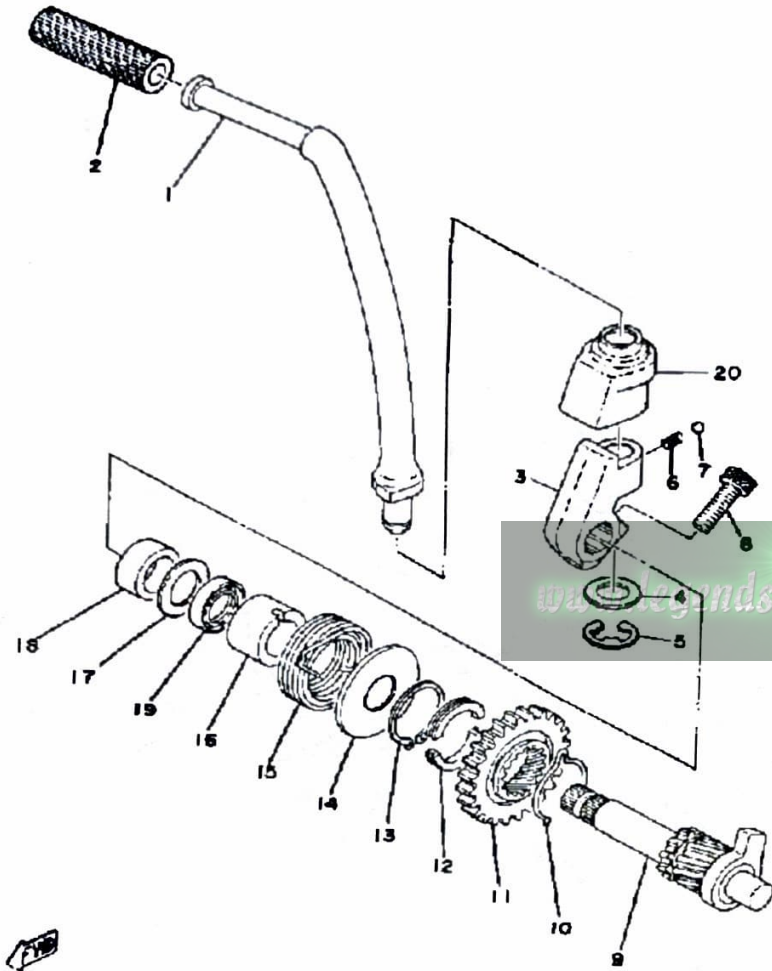
Ref. No.	Part Number	Description	Qty	Remarks
1	1W1-18540-00-00	SHIFT CAM ASSEMBLY	1	
2	93315-21813-00	BEARING	1	
3	1W1-18185-00-00	SEGMENT	1	
4	93604-12037-00	PIN, DOWEL	6	
5	1W1-18561-00-00	PLATE, SIDE 1	1	
6	99001-08600-00	CIRCLIP	1	
7	2A6-18531-00-00	BAR, SHIFT FORK GUIDE 1 ...	1	
8	2A6-18535-00-00	BAR, SHIF FRK GDE 2	1	
9	2A6-18511-00-00	FORK, SHIFT 1	2	
10	2A6-18512-00-00	FORK, SHIFT 2	1	
11	1W1-18140-00-00	STOPPER LEVER ASSEMBLY .	1	
12	50W-21631-00-00	BOLT 1	1	
13	90506-09156-00	SPRING, TENSION	1	
14	93604-30018-00	PIN, DOWEL	1	
15	136-18542-00-00	POINT, NEUTRAL	1	

SHIFTER 2



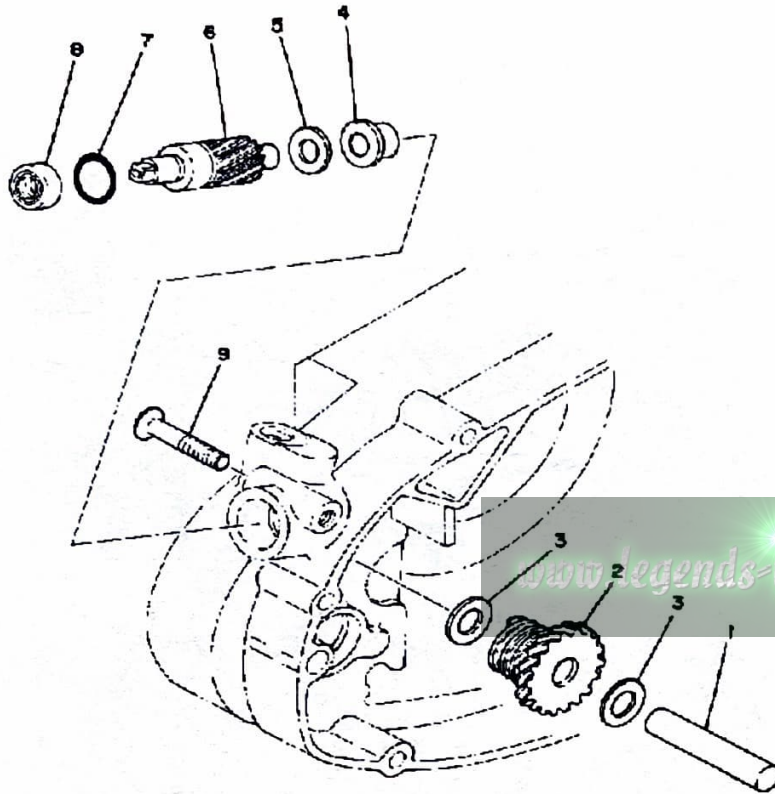
Ref. No.	Part Number	Description	Qty	Remarks
1	2A6-18111-00-00	PEDAL, SHIFT	1	
2	132-18113-01-00	COVER, SHIFT PEDAL	1	
3	97011-06020-00	BOLT	1	
4	93101-12060-00	OIL SEAL	1	
5	1W1-18101-03-00	. SHIFT SHAFT ASSEMBLY 1 .	1	
	99006-10600-00	. CIRCLIP	1	
	99999-01086-00	CHANGE SHAFT1W101 (1W1-18101-01)	1	
6	1W1-18136-00-00	CLIP, SHIFT SHAFT	1	
7	401-18178-00-00	ROLLER, SHIFT LEVER	1	
8	4F2-18120-00-00	SHIFT LEVER ASSEMBLY (2A6-18120-00)	1	
9	90506-08155-00	. SPRING, TENSION	1	
10	1W1-18197-01-00	SHAFT	1	
11	90508-32349-00	SPRING, TORSION	1	
12	90201-12M34-00	WASHER, PLATE	1	
13	99006-10600-00	CIRCLIP	2	
14	90149-08111-00	SCREW, SPEC"L SHAPE	1	
15	90170-08029-00	NUT	1	
16	90215-08014-00	WASHER, LOCK	1	

KICK - STARTER

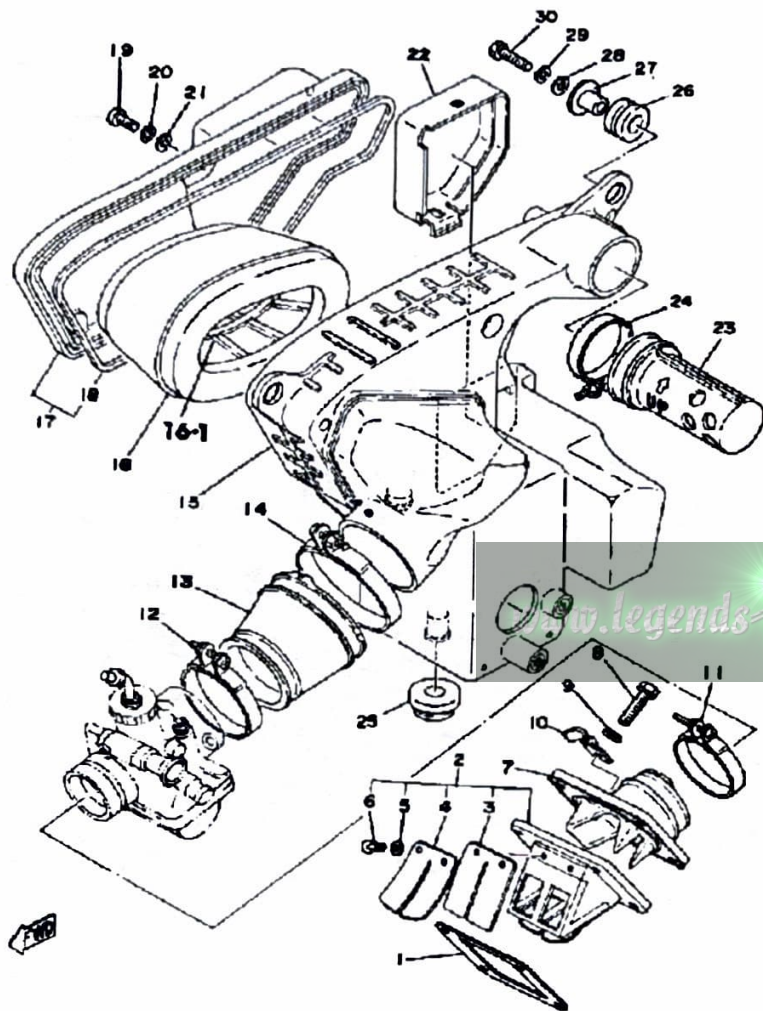


Ref. No.	Part Number	Description	Qty	Remarks
1	2A6-15620-01-00	KICK CRANK ASSEMBLY	1	
2	156-15618-01-00	COVER, KICK LEVER	1	
3	1W1-15621-01-00	BOSS, KICK CRANK	1	
4	90201-12541-00	WASHER, PLATE	1	
5	93430-08007-00	CIRCLIP	1	
6	90501-10459-00	SPRING, COMPRESSION	1	
7	93503-16010-00	BALL	1	
8	91316-08025-00	BOLT, SOCKET HEAD	1	
9	2A6-15660-01-00	KICK AXLE ASSEMBLY	1	
10	90468-26048-00	CLIP	1	
11	1W1-15641-00-00	GEAR, KICK (27T)	1	
12	248-15654-00-00	HOLDER, KICK GEAR	2	
13	99009-30400-00	CIRCLIP	1	
14	401-15676-00-00	COVER, SPRING	1	
15	90508-26346-00	SPRING, TORSION	1	
16	1W1-15666-00-00	SPACER	1	
17	90201-17327-00	WASHER, PLATE	1	
18	90560-17032-00	SPACER	1	
19	93101-17062-00	OIL SEAL	1	
20	1W1-15618-01-00	COVER, KICK LEVER	1	

TACHOMETER



Ref. No.	Part Number	Description	Qty	Remarks
1	(248-17861-00-00)	AXLE, DRIVE GEAR	1	
2	2A6-17831-00-00	GEAR, DRIVE	1	
3	90201-10123-00	WASHER, PLATE (10.5-18-1.6) (256-21715-00) 0 2	2	
4	90381-08002-00	BUSHING (214-17843-00)	1	
5	92990-08200-00	WASHER, PLAIN	1	
6	(2A6-17841-00-00)	GEAR, DRIVEN	1	
7	93210-14104-00	O-RING	1	
8	93102-08307-00	OIL SEAL	1	
9	98780-06030-00	SCREW, FLAT HEAD	1	

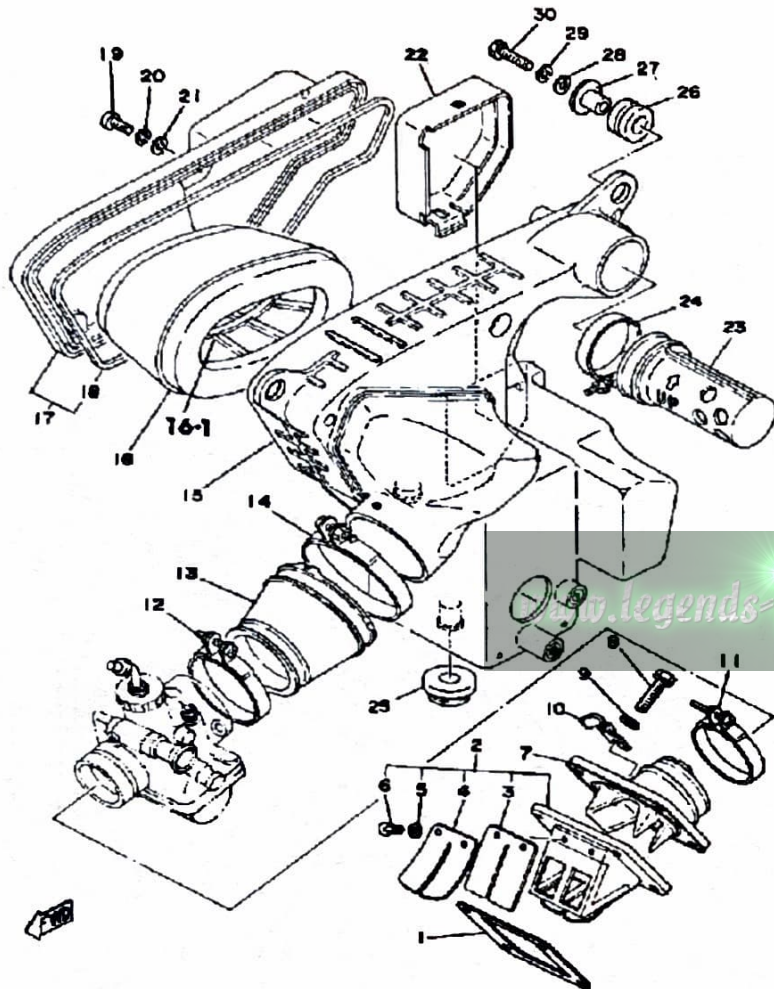


INTAKE

Ref. No.	Part Number	Description	Qty	Remarks
1	87A-13621-00-00	GASKET, VALVE SEAT	1	
2	558-13610-00-00	REED VALVE ASSEMBLY	1	
3	345-13613-70-00	. REED, VALVE	2	
4	345-13616-70-00	. STOPPER, REED VALVE	2	
5	92990-03100-00	. WASHER, SPRING (92901-03100)	4	
6	98580-03008-00	. SCREW, PAN HEAD	4	
7	401-13565-01-00	JOINT, CARBURETOR	1	
8	97011-06025-00	BOLT (97001-06025)	4	
9	92901-06600-00	WASHER	4	
10	90462-05005-00	CLAMP	1	
11	90460-43053-00	CLAMP, HOSE	1	
12	90460-49058-00	CLAMP, HOSE	1	
13	2A7-14453-00-00	JOINT, AIR CLNR 1	1	
14	90460-64065-00	CLAMP, HOSE	1	
15	2A6-14411-01-00	CASE, AIR CLEANER 1	1	
16	2A6-14451-00-00	ELEMENT, AIR CLNR	1	
17	2A6-14412-00-00	CAP, CLEANER CASE 1	1	
18	4L0-14457-01-00	. SEAL	1	
19	98580-05012-00	SCREW, PAN HEAD	5	
20	92990-05100-00	WASHER, SPRING	5	
21	92901-05600-00	WASHER, PLATE	5	
22	2A6-14417-00-00	COVER 1	1	
23	(2A6-14433-00-00)	PIPE, SUCTION 2	1	
24	90460-45040-00	CLAMP, HOSE	1	
25	90480-18171-00	GROMMET	1	
26	90480-14023-00	GROMMET	2	
27	90387-07391-00	COLLAR	2	
28	92901-06600-00	WASHER	2	

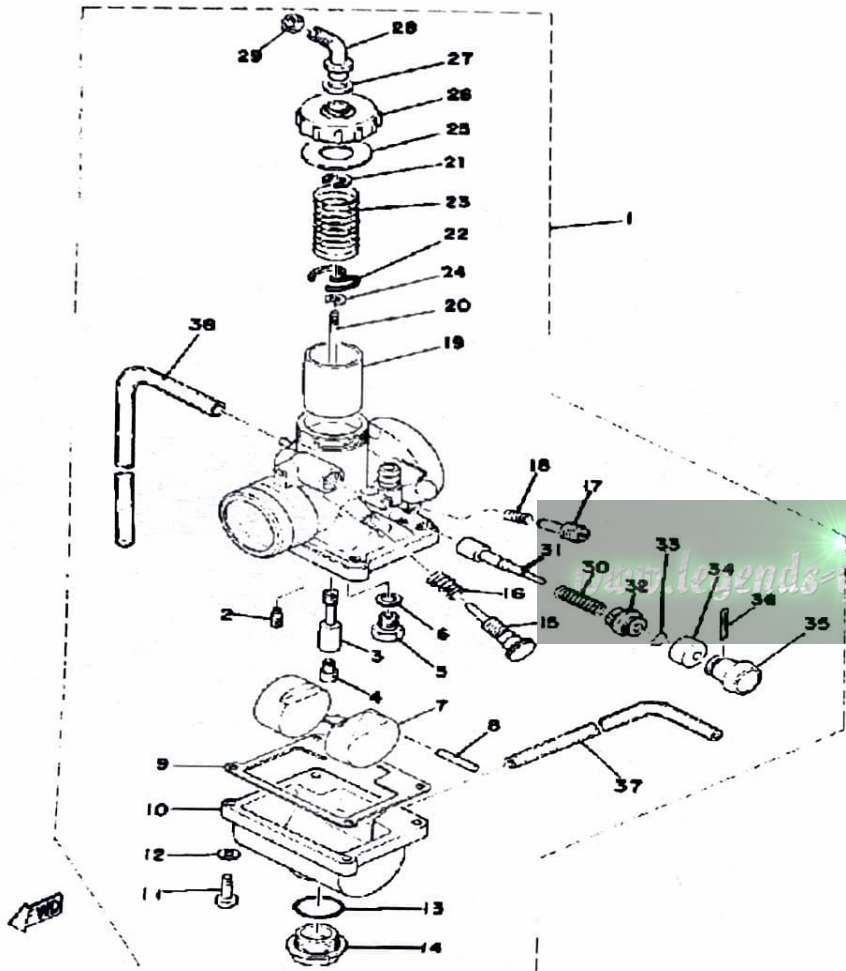
CONTINUED ON NEXT FRAME ►

INTAKE



Ref. No.	Part Number	Description	Qty	Remarks
29	92995-06100-00	WASHER, SPRING	2	
30	97011-06025-00	BOLT (97001-06025)	2	

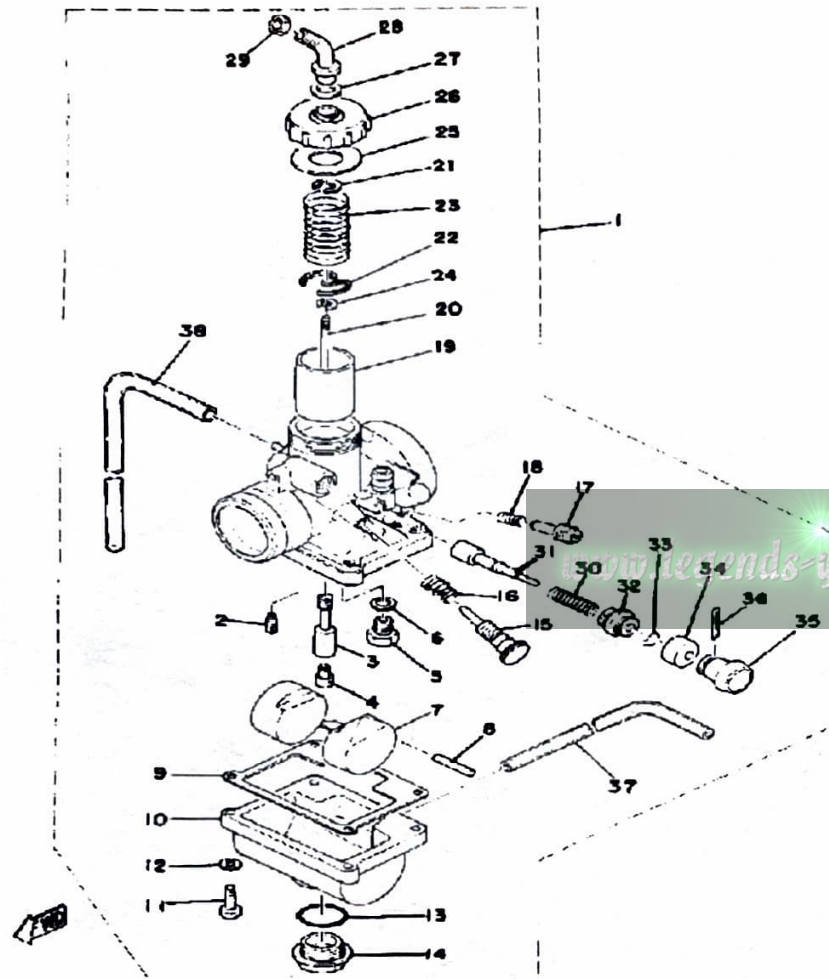
CARBURETOR



Ref. No.	Part Number	Description	Qty	Remarks
1	2A7-14101-10-00	CARBURETOR ASSEMBLY 1	1	
2	260-14142-22-A0	. JET, PILOT #22 5	1	
3	558-14141-32-00	. NOZZLE, MAIN	1	
4	137-14143-27-00	. JET, MAIN (#135)	1	U.R. STD
	137-14143-28-A0	. JET, MAIN (#140)	1	U.R. STD
	137-14143-30-00	. JET, MAIN #1 0	1	U.R. STD
5	23L-14107-25-00	. NEEDLE VALVE SET	1	
6	214-14195-00-00	. WASHER, NEEDLE VALVE	1	
7	314-14185-00-00	. FLOAT	1	
8	127-14186-00-00	. PIN, FLOAT	1	
9	304-14184-00-00	. GASKET, FLOAT CHMBR	1	
10	(539-14181-04-33)	BODY, FLOAT CHMBR 1	1	YAMAHA BLACK
11	98503-04014-00	. SCREW, PAN HEAD	4	
12	92901-04100-00	. WASHER, SPRING	4	
13	558-14147-00-00	. O-RING	1	
14	500-14115-00-00	. PLUG, SCREW	1	
15	493-14122-00-00	. SCREW, THROTTLE (443-14122-00)	1	
16	493-14133-00-00	. SPRING, THRTL STOP	1	
17	22K-14104-00-00	. AIR SCREW SET	1	
18	174-14134-00-00	. SPRING, AIR ADJUSTING	1	
19	314-14112-25-00	. VALVE, THROTTLE 1	1	
20	166-14116-13-00	. NEEDLE	1	
21	164-14137-00-00	. CLIP	1	
22	246-14132-00-00	. STOPPER, CABLE	1	
23	248-14131-00-00	. SPRING, THROTTLE VALVE	1	
24	363-14137-00-00	CLIP	1	
25	246-14126-00-00	. GASKET	1	
26	(578-14158-00-00)	TOP, MIXING CHAMBER	1	YAMAHA BLACK

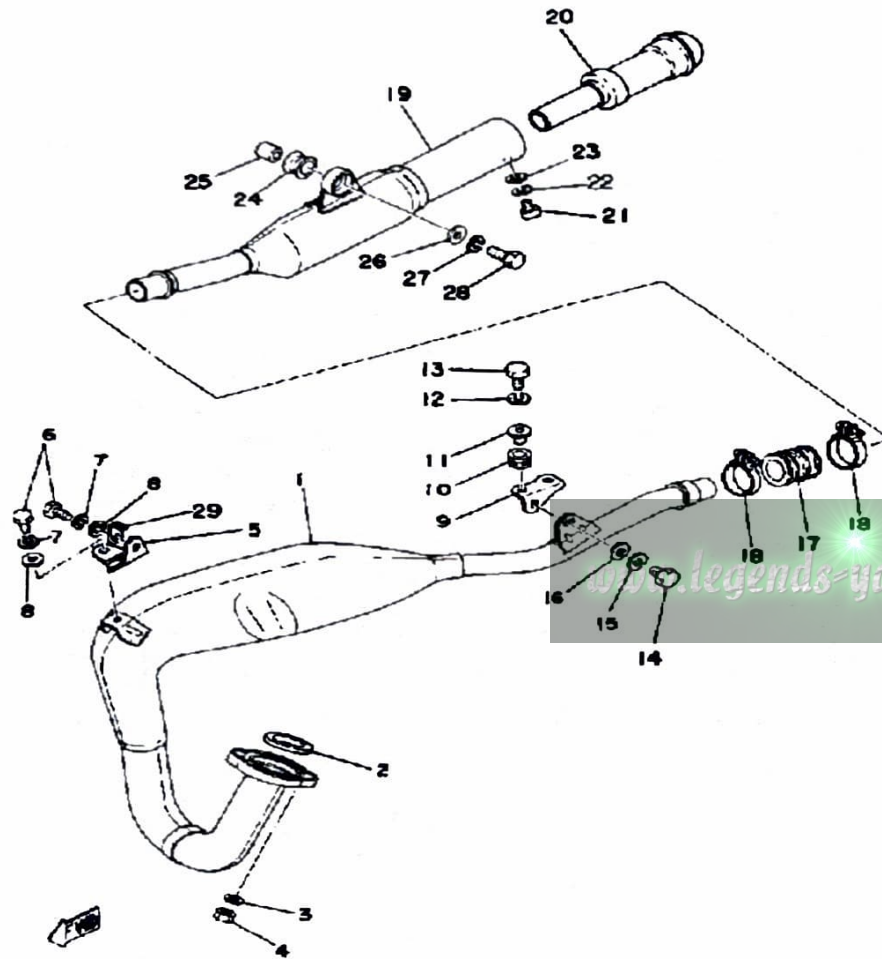
CONTINUED ON NEXT FRAME ►

CARBURETOR



Ref. No.	Part Number	Description	Qty	Remarks
27	363-14198-00-00	. GASKET	1	
28	363-14155-00-00	. GUIDE, CABLE	1	
29	127-14161-00-00	. NUT, CABLE ADJUSTING ...	1	
30	156-14135-00-00	. SPRING, PLUNGER	1	
31	304-14171-00-00	. PLUNGER, STARTER	1	
32	152-14174-00-00	. CAP, PLUNGER	1	
33	353-14138-00-00	. CLIP, PLUNGER	1	
34	132-14173-00-00	. COVER, PLUNGER CAP	1	
35	304-14261-00-00	. HOLDER	1	
36	91490-16020-00	. PIN, COTTER	1	
37	23F-14197-00-00	. PIPE, AIRVENT	1	
38	183-14197-01-00	. PIPE, AIRVENT	1	

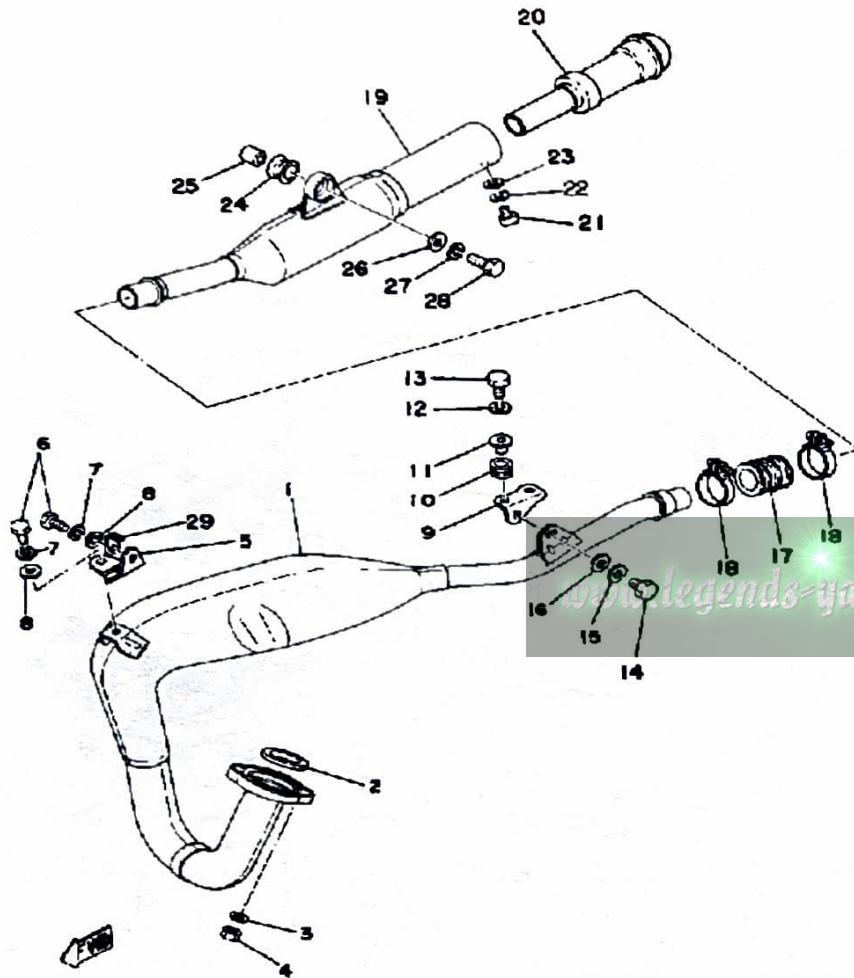
EXHAUST



Ref. No.	Part Number	Description	Qty	Remarks
1	2A8-14610-81-00	EXHAUST PIPE ASSEMBLY L (2A8-14610-00-00)	1	
2	152-14613-00-00	GASKET, EXST PIPE	1	
3	92995-06100-00	WASHER, SPRING	2	
4	95380-06600-00	NUT	2	
5	2A6-14772-00-00	STAY, MUFFLER 2	1	
6	97313-08018-00	BOLT, HEXAGON (97301-08016)	2	
7	92990-08100-00	WASHER	2	
8	92901-08600-00	WASHER	2	
9	5V7-14771-00-00	STAY, MUFFLER 1	1	
10	90480-14023-00	GROMMET	2	
11	90387-06388-00	COLLAR	2	
12	92995-06100-00	WASHER, SPRING	2	
13	97011-06025-00	BOLT (97001-06025)	2	
14	97313-08018-00	BOLT, HEXAGON (97301-08016)	1	
15	92990-08100-00	WASHER	1	
16	92901-08600-00	WASHER	1	
17	1W2-14714-00-00	GASKET, MUFFLER	1	
18	90460-37026-00	CLAMP, HOSE	2	
19	2A6-14753-00-00	SILENCER, EXHAUST	1	
20	1M1-14752-01-00	PIPE, OUTLET	1	
21	98580-06012-00	SCREW, PAN HEAD	1	
22	92995-06100-00	WASHER, SPRING	1	
23	92901-06600-00	WASHER	1	
24	565-14747-00-00	DAMPER, MUFFLER	1	
25	90387-08258-00	COLLAR	1	
26	90201-08753-00	WASHER, PLATE	1	
27	92990-08100-00	WASHER	1	
28	97313-08030-00	BOLT, HEXAGON	1	

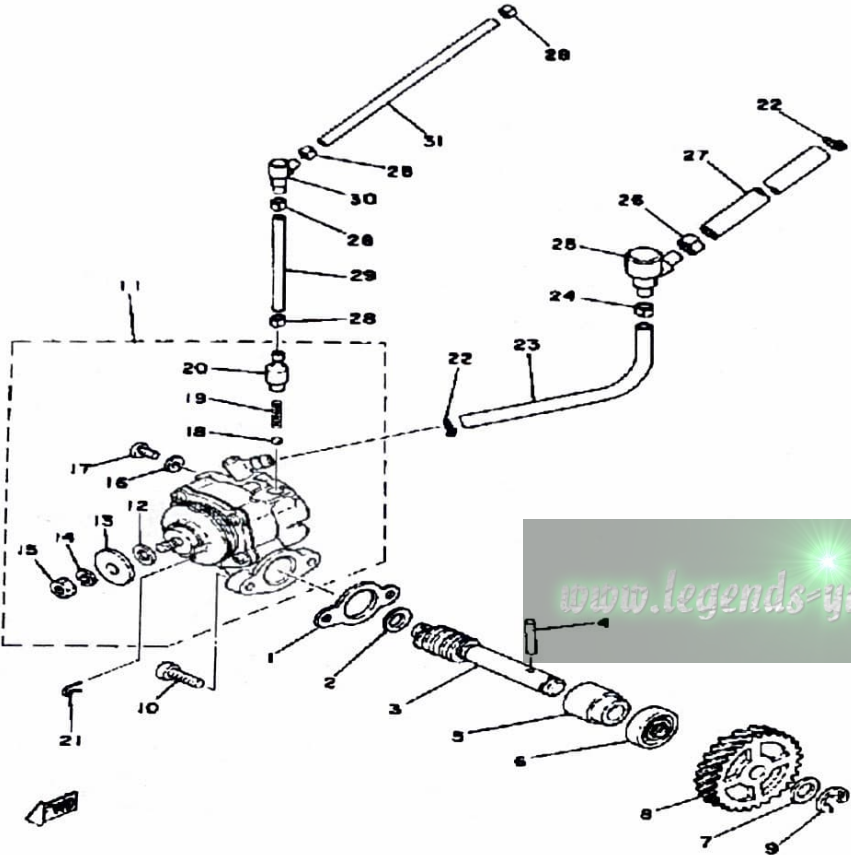
CONTINUED ON NEXT FRAME ►

EXHAUST



Ref. No.	Part Number	Description	Qty	Remarks
29	2A6-83596-00-00	CLAMP	1	

OIL PUMP



Ref. No.	Part Number	Description	Qty	Remarks
1	3MT-13116-00-00	GASKET, PUMP CASE (BY0-13116-00)	1	
2	90201-08624-00	WASHER, PLATE	1	
3	(558-13175-00-00)	SHAFT, WORM	1	
4	93603-22028-00	PIN, DOWEL	1	
5	1E7-13176-00-00	METAL, WRM SHAF OTR	1	
6	93101-10002-00	OIL SEAL	1	
7	90201-105J4-00	WASHER, PLATE (90201-106H1)	1	
8	2A6-13178-00-00	GEAR, PUMP DRIVE	1	
9	99001-08600-00	CIRCLIP	1	
10	98580-05016-00	SCREW, PAN HEAD	2	
11	2A6-13101-00-00	OIL PUMP ASSEMBLY	1	
12	137-13137-00-03	. SHIM (0.3T)	1	U.R.
	137-13137-00-05	. SHIM (0.5T)	1	U.R.
	137-13137-00-10	. SHIM (1.0T)	1	U.R.
13	137-13138-01-00	. PLATE, ADJUSTING	1	
14	92990-05100-00	. WASHER, SPRING	1	
15	95380-05600-00	. NUT	1	
16	90430-04004-00	. GASKET	1	
17	98901-04008-00	. SCREW, BIND	1	
18	93505-32002-00	. BALL	1	
19	90501-02018-00	. SPRING, COMPRESSION	1	
20	402-13552-00-00	. NOZZLE	1	
21	363-13133-01-00	CLIP	1	
22	90467-08003-00	CLIP	2	
23	90445-07219-00	HOSE	1	
24	90468-02025-00	CLIP	1	
25	2A6-13115-01-00	CONNECTOR, SCTN PPE	1	

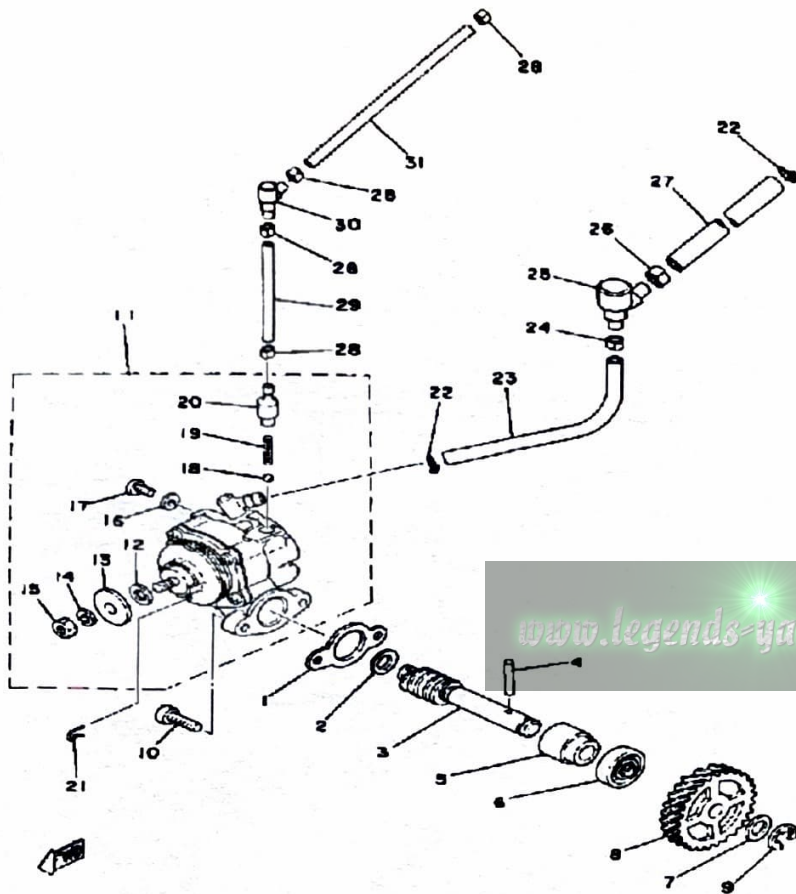
Pump output at 200 strokes	Maximum throttle		Minimum throttle	
	Min.	Max.	Min.	Max.
	4.6 cc	5.15 cc	0.60 cc	0.63 cc

Pump stroke length	Maximum throttle		Minimum throttle	
	Min.	Max.	Min.	Max.
	1.65 mm	2.05 mm	0.20 mm	0.25 mm

CONTINUED ON NEXT FRAME ►

OIL PUMP

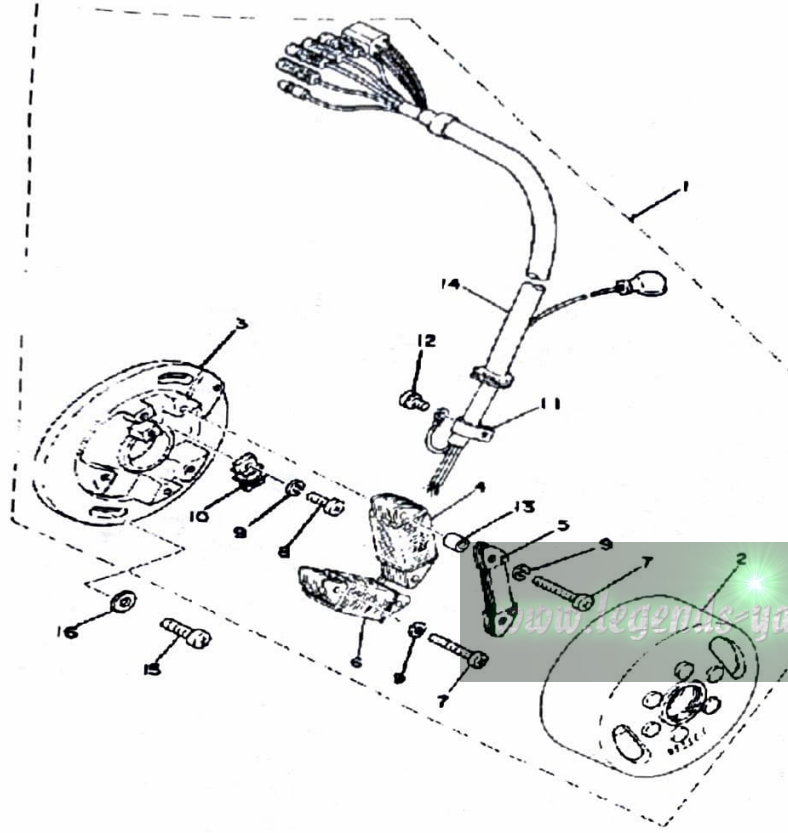
Ref. No.	Part Number	Description	Qty	Remarks
26	90468-02078-00	CLIP	1	
27	90445-09100-00	HOSE	1	
28	90468-02033-00	CLIP	4	
29	90445-05019-00	HOSE	1	
30	2A6-13164-01-00	CONCT, DELIVERY PPE	1	
31	90445-05022-00	HOSE	1	



Pump output at 200 strokes	Maximum throttle		Minimum throttle	
	Min.	Max.	Min.	Max.
	4.6 cc	5.15 cc	0.50 cc	0.63 cc

Pump stroke length	Maximum throttle		Minimum throttle	
	Min.	Max.	Min.	Max.
	1.65 mm	2.05 mm	0.20 mm	0.25 mm

C - D - I - MAGNETO

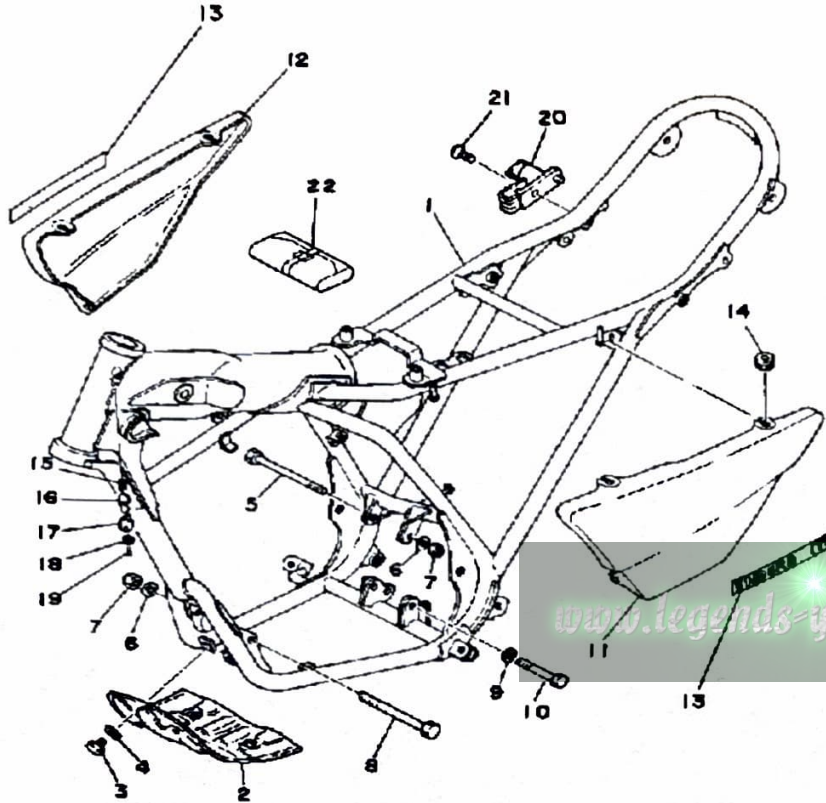


Ref. No.	Part Number	Description	Qty	Remarks
1	(2A7-85500-20-00)	CDI MAGNETO ASSEMBLY	1	
2	(2A7-85550-20-00)	ROTOR ASSEMBLY	1	
3	1W2-85509-20-00	BASE, MAGNETO	1	
4	2A7-85511-20-00	COIL SOURCE 1	1	
5	2A7-85512-20-00	COIL SOURCE 2	1	
6	2A7-85513-20-00	COIL, LIGHTING 1	1	
7	619-81345-20-00	SCREW, PAN HEAD (811-14125-0)	4	
8	98503-04014-00	SCREW, PAN HEAD	2	
9	92901-04100-00	WASHER, SPRING	6	
10	2A7-85580-20-00	COIL, PULSER	1	
11	445-81328-20-00	CLAMP	1	
12	97601-04106-00	SCREW, PN/HD.W/WSHR	1	
13	1W2-85516-20-00	SPACER	2	
14	(2A7-85515-20-00)	LEAD WIRE ASSEMBLY	1	
15	98580-06012-00	SCREW, PAN HEAD	2	
16	92901-06600-00	WASHER	2	

Primary coil resistance Use ($\Omega \times 1$) scale	Secondary coil resistance Use ($\Omega \times 100$) scale)
1.0 $\Omega \pm 15\%$	5.9 K $\Omega \pm 15\%$

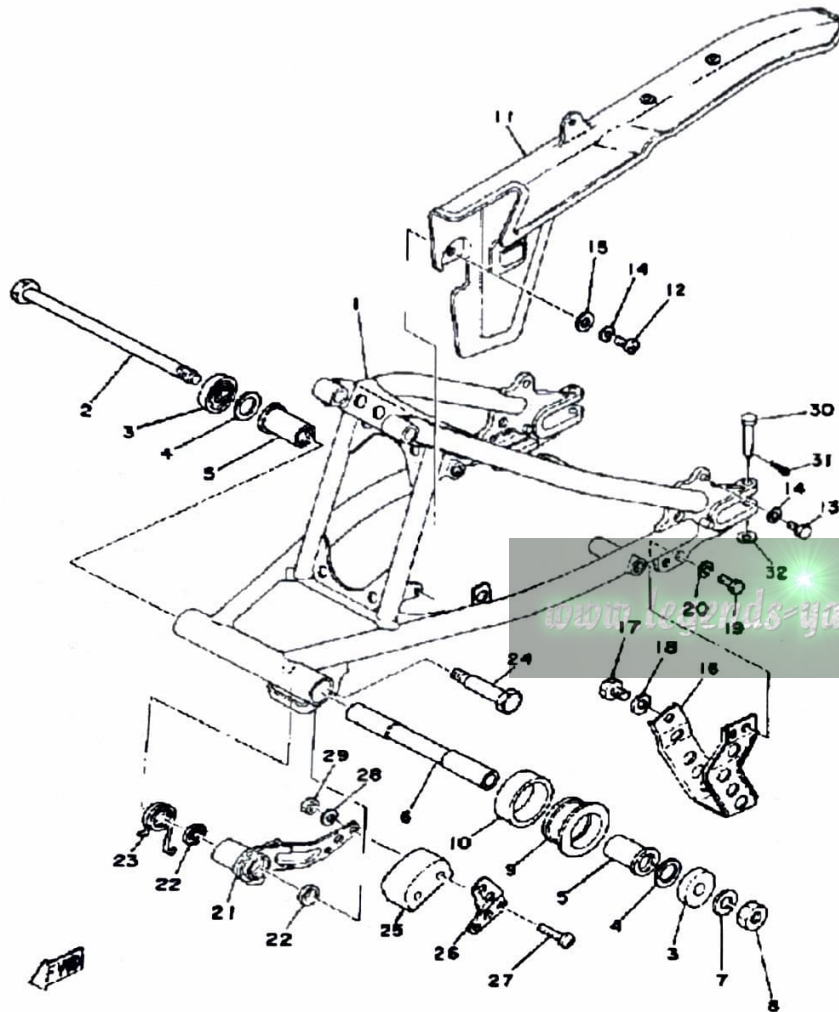
Charging coil resistance:	
DT125E	Ground to green/white leads 0.27 $\Omega \pm 10\%$ /20°C (68°F)
DT175E	Ground to green/white leads 0.30 $\Omega \pm 10\%$ /20°C (68°F)

FRAME - SIDE COVER



Ref. No.	Part Number	Description	Qty	Remarks
1	(2A6-21110-00-33)	FRAME	1	YAMAHA BLACK
2	(2A6-21471-00-90)	PROTECTOR, ENGINE	1	YAMAHA BLACK
3	97013-06012-00	BOLT	4	
4	92901-06600-00	WASHER	4	
5	90105-08120-00	BOLT, WASHER BASED	1	
6	92990-08200-00	WASHER, PLAIN	2	
7	90185-08089-00	NUT, SELF-LOCKING	2	
8	90105-08099-00	BOLT, WASHER BASED	1	
9	92990-10100-00	WASHER, SPRING	1	
10	90105-10037-00	BOLT, WASHER BASED	1	
11	2A7-21711-00-01	COVER, SIDE 1	1	BALBOA BLUE LOW GLOSS BLACK
	2A7-21711-10-01	COVER, SIDE 1	1	SUNSHINE RED
12	2A7-21721-00-01	COVER, SIDE 2	1	BALBOA BLUE LOW GLOSS BLACK
	2A7-21721-10-01	COVER, SIDE 2	1	SUNSHINE RED
13	(2A7-21786-00-00)	EMBLEM 6	2	
	(2A7-21786-10-00)	EMBLEM 6	2	
14	90480-12053-00	GROMMET	6	
15	90502-09024-00	SPRING, CONICAL	1	
16	2A6-23408-00-00	STEERING LOCK ASSEMBLY .	1	
17	3DM-23484-00-00	CAP, HANDLE LOCK	1	
18	90206-04003-00	WASHER, WAVE (214-23488-00)	1	
19	90269-04003-00	RIVET	1	
20	55E-21308-00-00	HELMET HANGER ASSEMBLY	1	
21	98603-06018-00	SCREW, OVAL HEAD	1	
22	2A6-W2810-00-00	TOOL KIT	1	

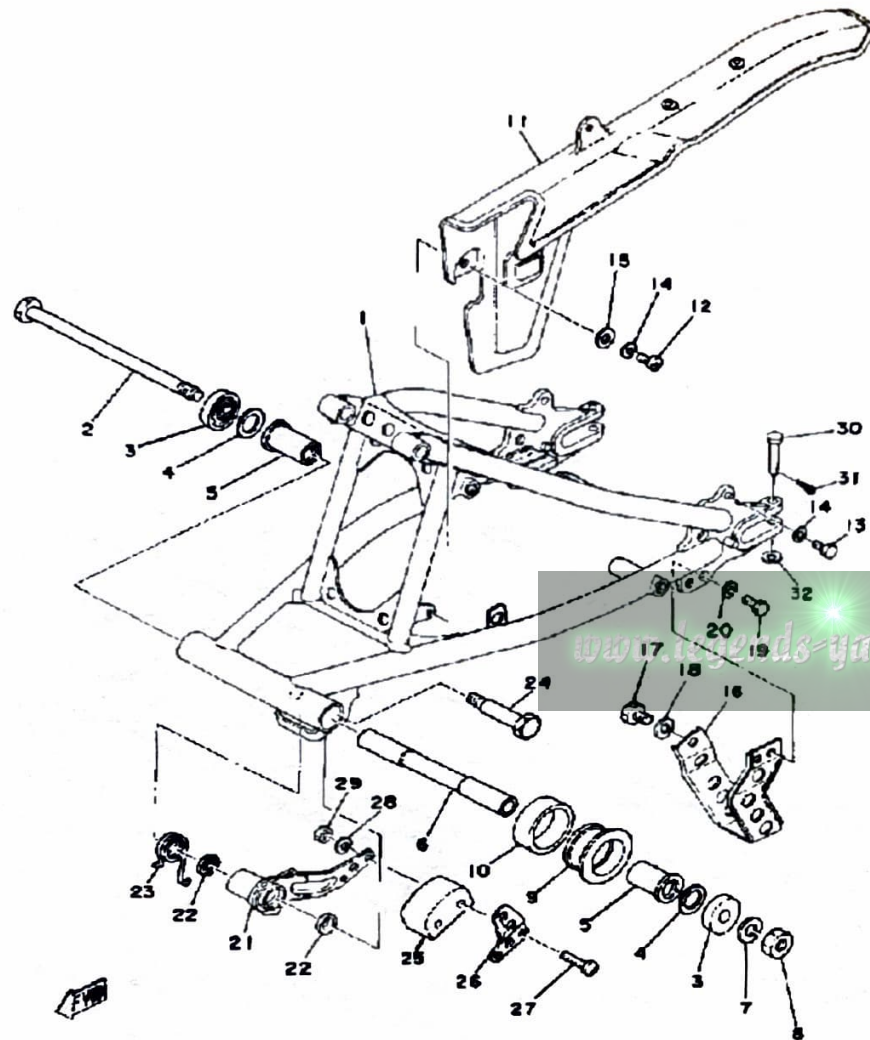
REAR ARM - CHAIN CASE



Ref. No.	Part Number	Description	Qty	Remarks
1	(2A6-22110-01-33)	REAR ARM	1	YAMAHA BLACK
2	537-22141-01-00	SHAFT, PIVOT	1	
3	401-22128-01-00	SEAL, GUARD	2	
4	401-22127-00-00	SHIM	1	
5	90386-18028-00	BUSH	2	
6	18G-22124-00-00	BUSH 2	1	
7	92901-12100-00	WASHER, SPRING	1	
8	90185-12046-00	NUT, SELF-LOCKING	1	
9	2A6-22151-00-00	SEAL, GUARD	1	
10	2A6-22152-00-00	SEAL, GUARD	1	
11	2A6-22311-01-00	. CASE, CHAIN	1	
	3J0-22131-00-00	. STAY, CHAIN CASE 1	1	
	3J0-22147-00-00	. PORTECTOR, CHAIN	1	
	90387-05682-00	. COLLAR	2	
	92901-05600-00	. WASHER, PLATE	2	
	97313-05016-00	. BOLT, HEXAGON	2	
	99999-01094-00	CASE, CHAINCASE, CHAIN (2A6-22311-00-98)	1	LOW GLOSS BLACK
12	98580-05016-00	SCREW, PAN HEAD	2	
13	97313-05012-00	BOLT, HEXAGON	1	
14	92990-05100-00	WASHER, SPRING	3	
15	90201-05036-00	WASHER, PLATE	2	
16	2A6-22318-00-00	GUARD, CHAIN	1	
17	97313-08012-00	BOLT	1	
18	92990-08100-00	WASHER	1	
19	97313-06016-00	BOLT, HEXAGON	2	
20	92995-06100-00	WASHER, SPRING	2	
21	2A6-22179-00-00	ARM, TENSIONER	1	
22	93104-14044-00	OIL SEAL	2	

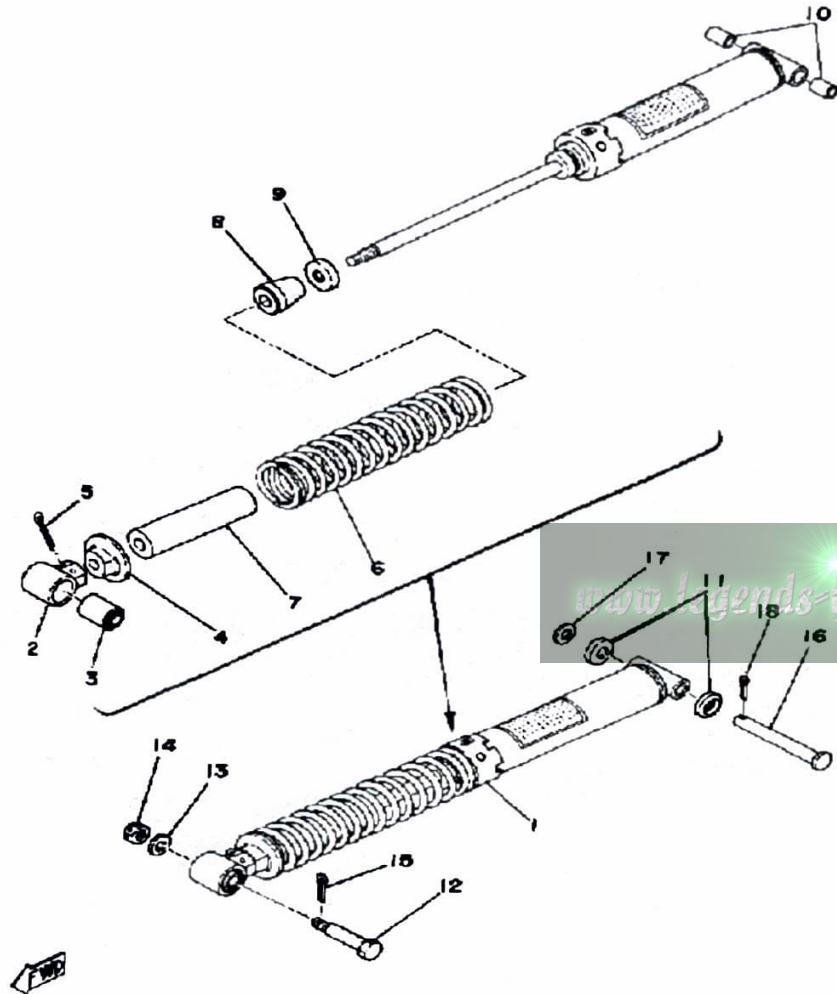
CONTINUED ON NEXT FRAME ►

REAR ARM - CHAIN CASE



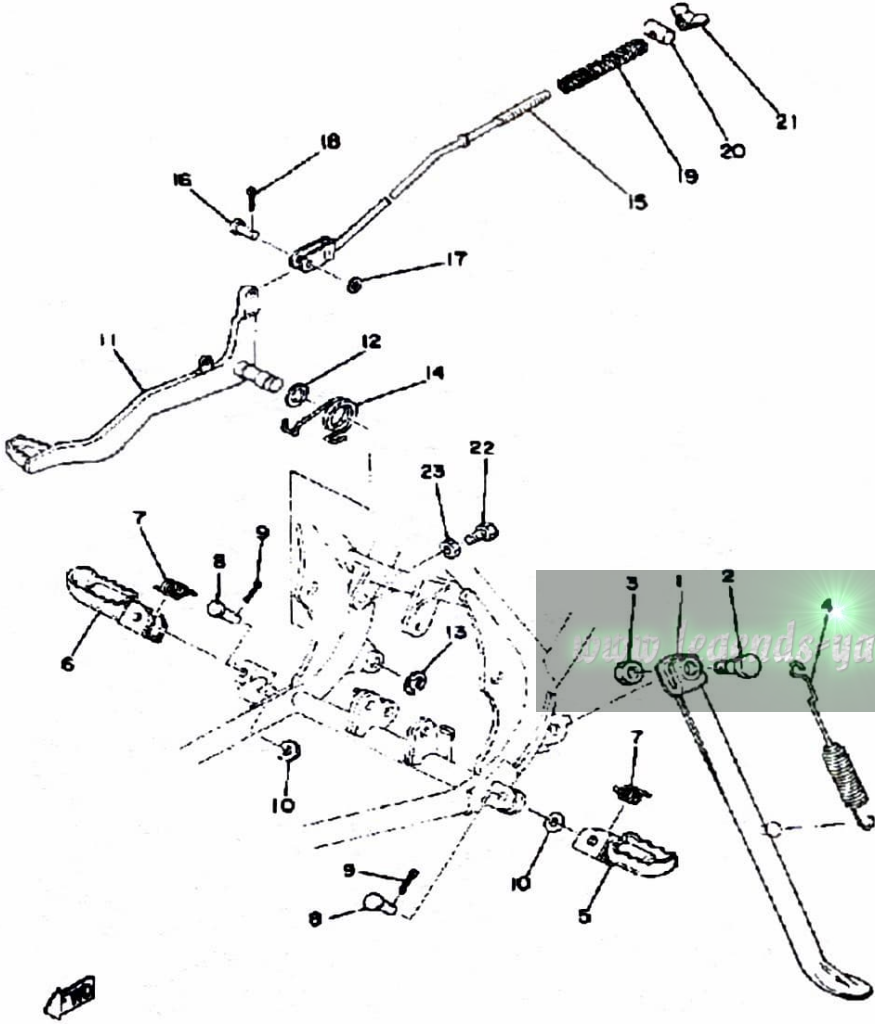
Ref. No.	Part Number	Description	Qty	Remarks
23	90508-35350-00	SPRING, TORSION	1	
24	90109-10483-00	BOLT (90109-10533-00)	1	
25	ACC-11130-00-25	TENSIONER (2N0-22178-00-00)	1	
26	1W1-22187-00-00	GUIDE, CHAIN	1	
27	98501-05040-00	SCREW, PAN HEAD (98502-05040)	2	
28	92990-05100-00	WASHER, SPRING	2	
29	95311-05700-00	NUT	2	
30	91701-06042-00	PIN, CLEVIS	2	
31	91490-20020-00	PIN, COTTER	2	
32	92901-06600-00	WASHER	2	

REAR CUSHION



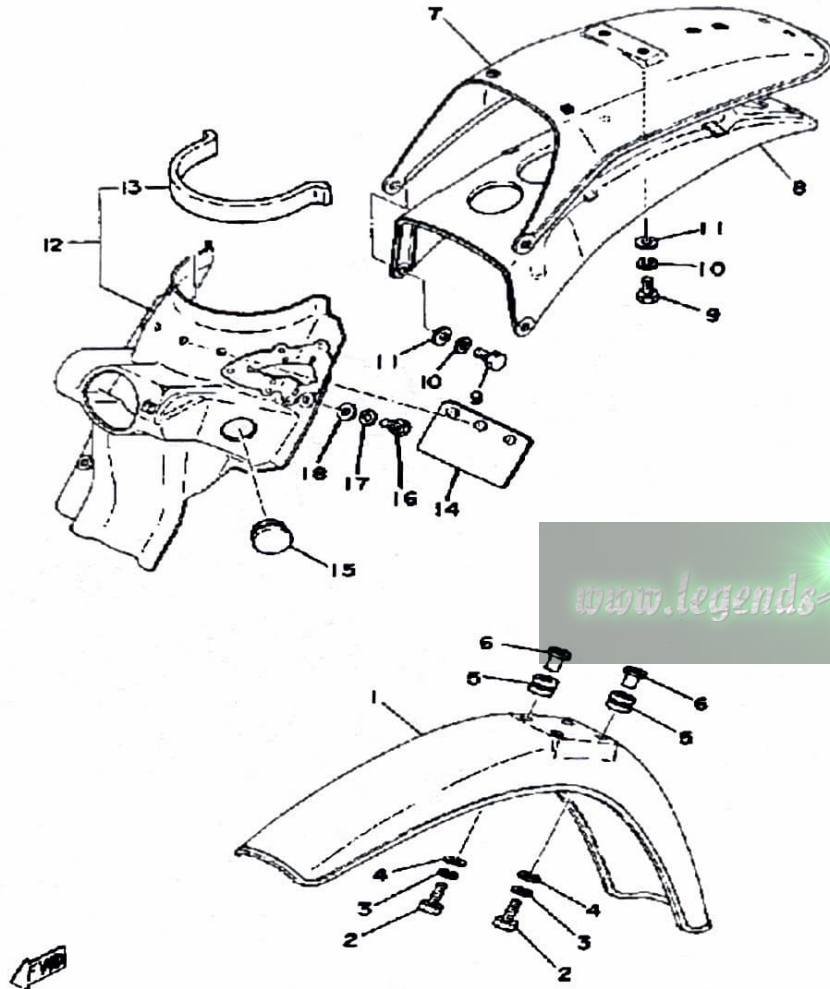
Ref. No.	Part Number	Description	Qty	Remarks
1	(2N4-22210-01-00)	SHK/ABS ASSEMBLY, REAR .	1	
2	(1M1-22219-01-00)	BRACKET, UPPER	1	
3	1M1-22216-00-00	. BUSH, REAR SHOCK ABSORBER	1	
4	(1M1-22213-01-00)	SEAT, SPRING UPPER	1	
5	91401-30040-00	. PIN, COTTER	1	
6	(90501-90484-00)	SPRING, COMPRESSION	1	
7	(1M1-22496-02-00)	SLEEVE, ROD	1	
8	(2A6-22493-00-00)	BUMP, STOP	1	
9	(1M1-22482-00-00)	STOPPER	1	
10	90380-12051-00	. BUSH, SOLID	2	
11	483-22128-00-00	COVER, THRUST 1	2	
12	90109-10550-00	BOLT (90109-10453-00)	1	
13	92990-10200-00	WASHER, PLAIN	1	
14	95303-10900-00	NUT, SLOTTED	1	
15	91490-20025-00	PIN, SPLIT	1	
16	90240-12059-00	PIN, CLEVIS	1	
17	92990-12600-00	WASHER, PLATE	1	
18	91401-30030-00	PIN, COTTER	1	

STAND - FOOTREST - BRAKE PEDAL



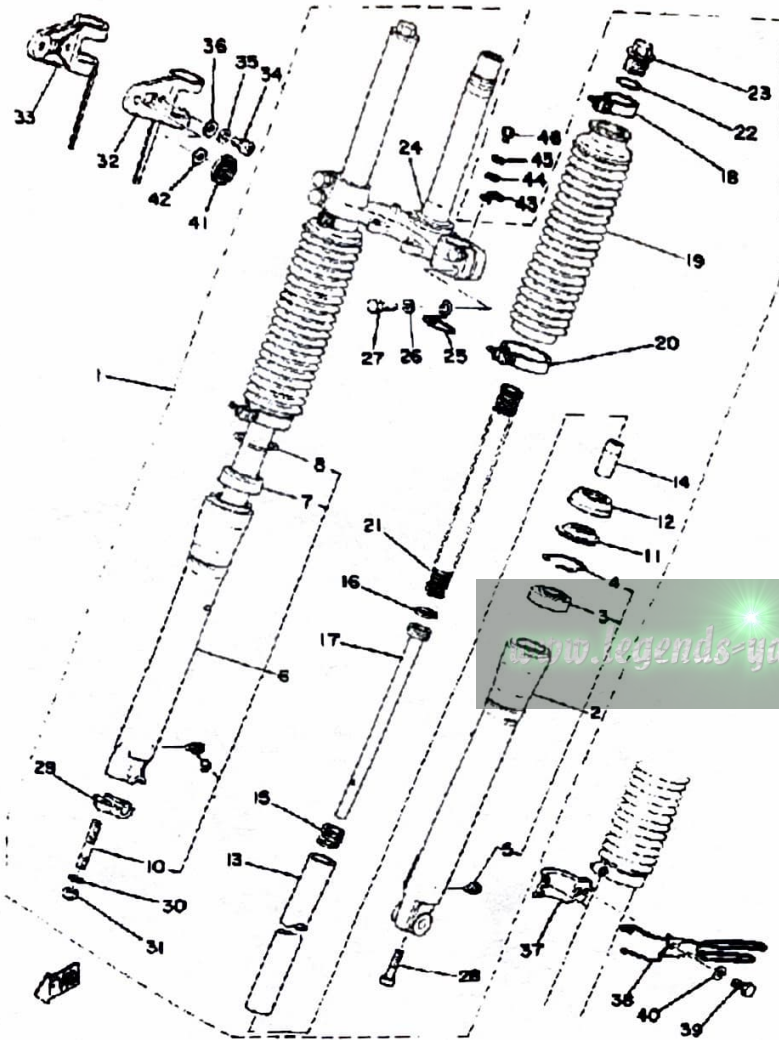
Ref. No.	Part Number	Description	Qty	Remarks
1	1W1-27311-10-00	STAND, SIDE	1	
2	90109-103A1-00	BOLT	1	
3	90185-10037-00	NUT, SELF-LOCKING	1	
4	90507-29008-00	SPRING, TENSION	1	
5	22W-27411-01-90	FOOTREST 1	1	YAMAHA BLACK
6	22W-27421-01-90	FOOTREST 2	1	YAMAHA BLACK YAMAHA BLACK
7	90508-20023-00	SPRING, TORSION	2	
8	91701-08038-00	PIN, CLEVIS	2	
9	91401-25020-00	PIN, COTTER	2	
10	92901-08600-00	WASHER	2	
11	2A6-27211-00-00	PEDAL, BRAKE	1	YAMAHA BLACK
12	90201-14212-00	WASHER, PLATE	1	
13	93430-10015-00	CIRCLIP, E-TYPE	1	
14	90508-32354-00	SPRING, TORSION	1	
15	322-27231-00-00	ROD, BRAKE	1	
16	90240-06006-00	PIN, CLEVIS	1	
17	92990-06200-00	WASHER	1	
18	91401-25020-00	PIN, COTTER	1	
19	90501-10245-00	SPRING, COMPRESSION	1	
20	90249-12008-00	PIN	1	
21	90179-06411-00	NUT	1	
22	97011-06020-00	BOLT	1	
23	95380-06700-00	NUT	1	

FRONT FENDER - REAR FENDER



Ref. No.	Part Number	Description	Qty	Remarks
1	453-21511-01-00	FENDER, FRONT	1	BALBOA BLUE
	453-21511-01-00	FENDER, FRONT	1	SUNSHINE RED
2	97011-06025-00	BOLT (97001-06025)	4	
3	92995-06100-00	WASHER, SPRING	4	
4	90201-06067-00	WASHER, PLATE	4	
5	90480-14198-00	GROMMET	4	
6	90387-06388-00	COLLAR	4	
7	2A7-21611-00-00	FENDER, REAR	1	BALBOA BLUE
	2A8-21611-A0-00	FENDER, REAR	1	
8	2A6-21617-01-00	BRACKET, FENDER (2A6-21617-00)	1	
9	97313-06016-00	BOLT, HEXAGON	4	
10	92995-06100-00	WASHER, SPRING	4	
11	92901-06600-00	WASHER	4	
12	(2A7-21620-00-00)	GUARD, MUD	1	
13	2A6-21639-00-00	DAMPER 2	1	
14	1M1-21621-00-00	FLAP	1	
15	90480-30167-00	GROMMET	2	
16	97313-06016-00	BOLT, HEXAGON	3	
17	92995-06100-00	WASHER, SPRING	3	
18	90201-06067-00	WASHER, PLATE	3	

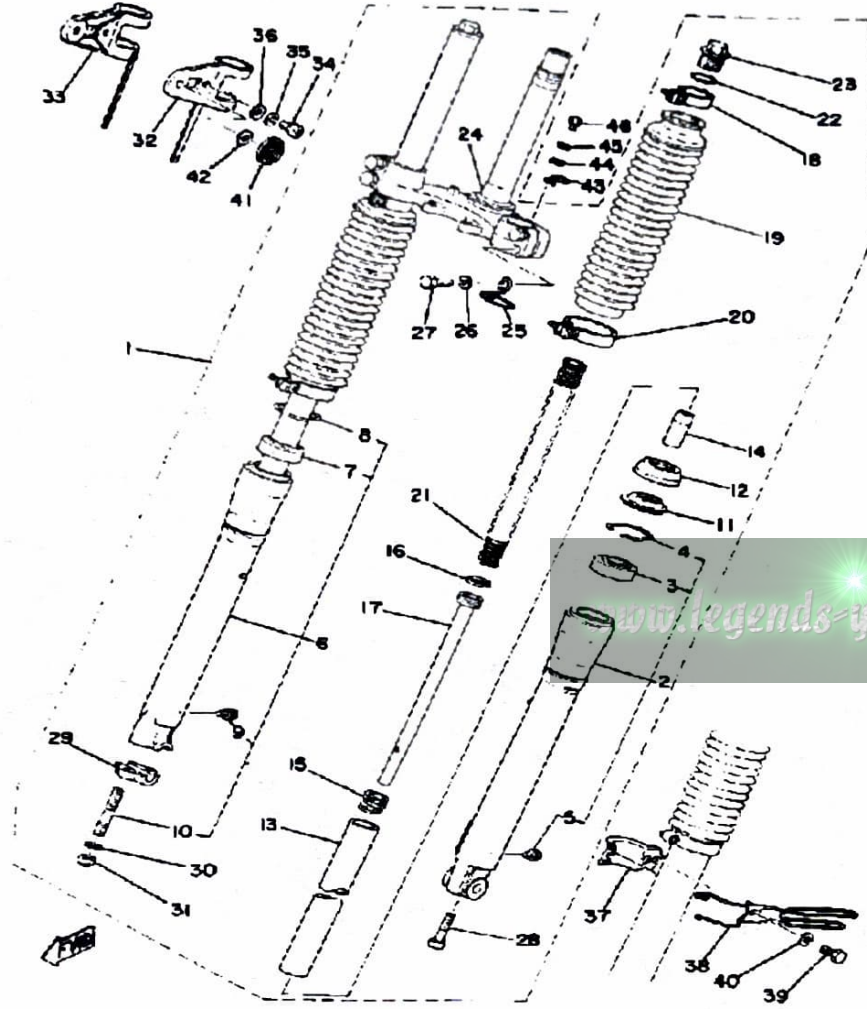
FRONT FORK



Ref. No.	Part Number	Description	Qty	Remarks
1	2A8-23101-40-00	FRONT FORK ASSEMBLY	1	
2	(2A6-23126-00-38)	TUBE, OUTER 1	1	
3	2A6-23145-00-00	.. OIL SEAL	1	
4	2A6-23156-00-00	.. CLIP, OIL SEAL	1	
5	2A6-23119-00-00	.. PLUG, DRAIN	1	
6	(2A6-23136-00-38)	TUBE, OUTER 2	1	
7	2A6-23145-00-00	.. OIL SEAL	1	
8	2A6-23156-00-00	.. CLIP, OIL SEAL	1	
9	2A6-23119-00-00	.. PLUG, DRAIN	1	
10	90116-08260-00	.. BOLT, STUD	2	
11	2A6-23144-00-00	.. SEAL, DUST	2	
12	2A6-23193-00-00	.. GUIDE, BOOT	2	
13	2A6-23124-00-00	.. TUBE, INNER 1	2	
14	1L9-23166-00-00	.. SPACER, OIL LOCK	2	
15	(2A6-23151-00-00)	SPRING, REBOUND	2	
16	2A6-23157-00-00	.. RING, PISTON FRTRFK	2	
17	(2A6-23170-00-00)	CYLINDER, FRTRFK	2	
18	2A6-23192-01-00	.. BAND	2	
19	2A6-23191-00-00	.. BOOT, FRONT FORK	2	
20	2A6-23489-01-00	.. BAND	2	
21	2A6-23141-00-00	.. SPRING, FRONT FORK	2	
22	(2A6-23147-00-00)	O-RING	2	
23	(2A6-23111-00-00)	BOLT, CAP	2	
24	2A6-23340-00-90	.. UNDER BRACKET (2A6-23340-00-33)	1	YAMAHA BLACK
25	2A6-23317-00-00	.. HOLDER, CABLE	1	
26	92990-08100-00	.. WASHER	4	
27	2A6-23346-00-00	.. BOLT 1	4	
28	3M7-23181-00-00	.. BOLT, HEX SCKT HEAD	2	

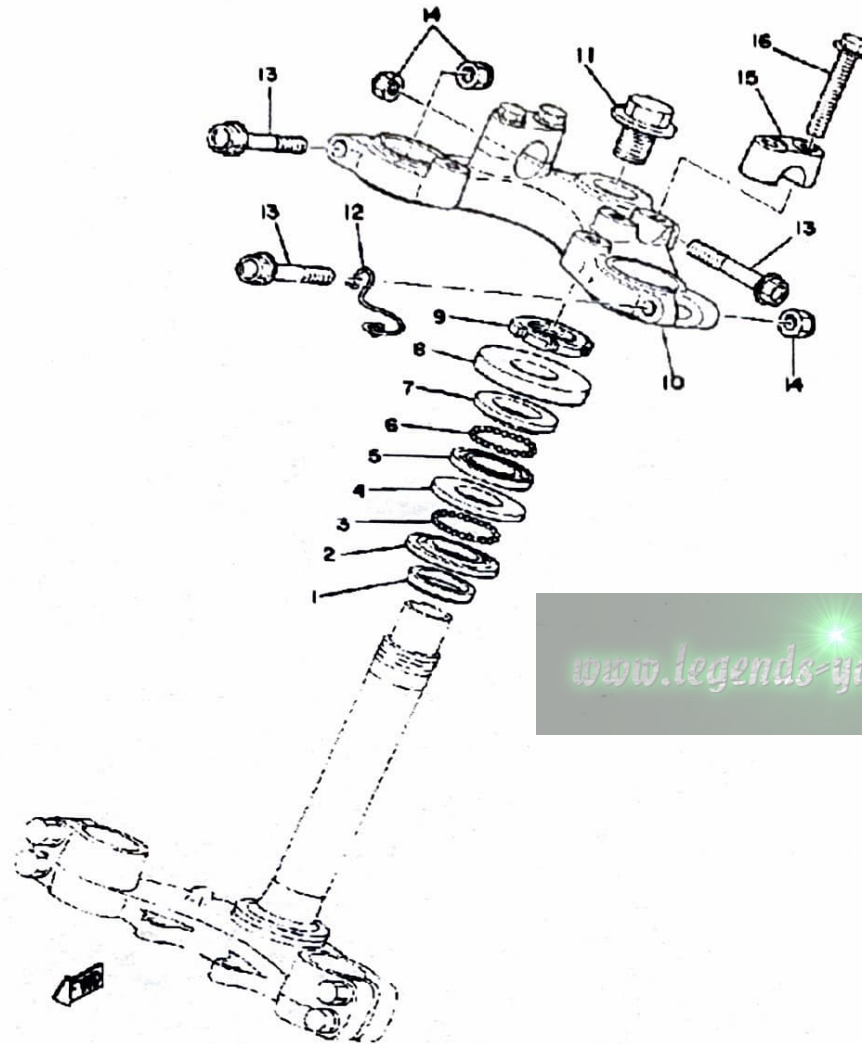
CONTINUED ON NEXT FRAME ►

FRONT FORK



Ref. No.	Part Number	Description	Qty	Remarks
29	(2A6-23167-01-00)	HOLDER, AXLE	1	
30	92901-08600-00	. WASHER	2	
31	90185-08089-00	. NUT, SELF-LOCKING	2	
32	2A6-84118-00-00	STAY, HEADLIGHT 1	1	
33	2A6-84119-00-00	STAY, HEADLIGHT 2	1	
34	98580-06020-00	SCREW	2	
35	92995-06100-00	WASHER, SPRING	2	
36	92990-06200-00	WASHER	2	
37	2A6-23319-00-00	HOLDER, CABLE 2	1	
38	2A6-23318-00-00	HOLDER, CABLE 1	1	
39	97011-06020-00	BOLT	1	
40	92995-06100-00	WASHER, SPRING	1	
41	355-85111-01-00	REFLECTOR, FRONT 1	2	
42	90430-06012-00	GASKET	2	
43	(2A6-83595-00-00)	CLAMP	1	
44	92901-06600-00	WASHER	1	
45	92995-06100-00	WASHER, SPRING	1	
46	97013-06012-00	BOLT	1	

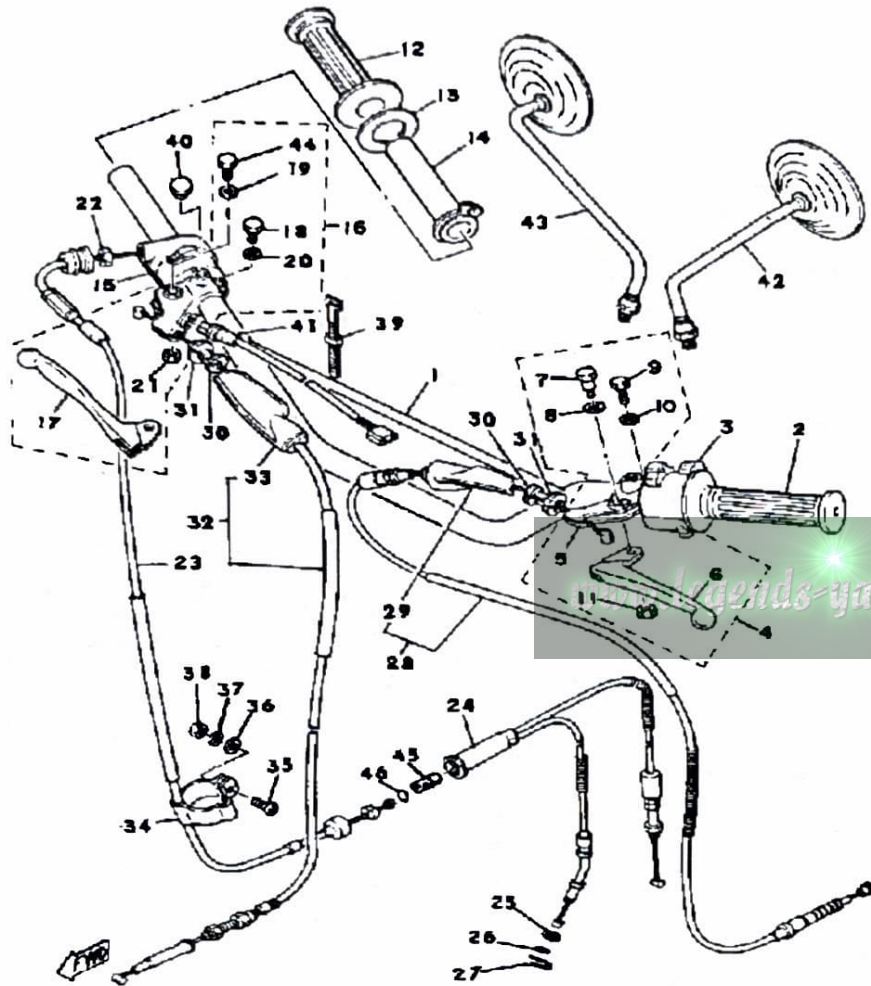
STEERING



Ref. No.	Part Number	Description	Qty	Remarks
1	164-23462-00-00	SEAL, STEERING	1	
2	156-23411-00-00	RACE, BALL 1	1	
3	93501-04011-00	BALL	19	
4	156-23412-00-00	RACE, BALL 2	1	
5	22F-23412-01-00	RACE, BALL 2	2	
6	93503-16010-00	BALL	22	
7	22F-23411-01-00	RACE, BALL 1	1	
8	10V-23416-01-00	COVER, BALL RACE 2	1	
9	90179-25033-00	NUT	1	
10	(2A6-23435-00-98)	CROWN, HANDLE	1	LOW GLOSS BLACK
11	90105-14136-00	BOLT, WASHER BASED	1	
12	90468-20082-00	CLIP	1	
13	95811-08055-00	BOLT, FLANGE	3	
14	90185-08089-00	NUT, SELF-LOCKING	3	
15	1E6-23441-00-00	HOLDER, HANDLE UPR	2	
16	95811-08035-00	BOLT, FLANGE (95821-08035)	4	

www.legends-yamaha-enduros.com

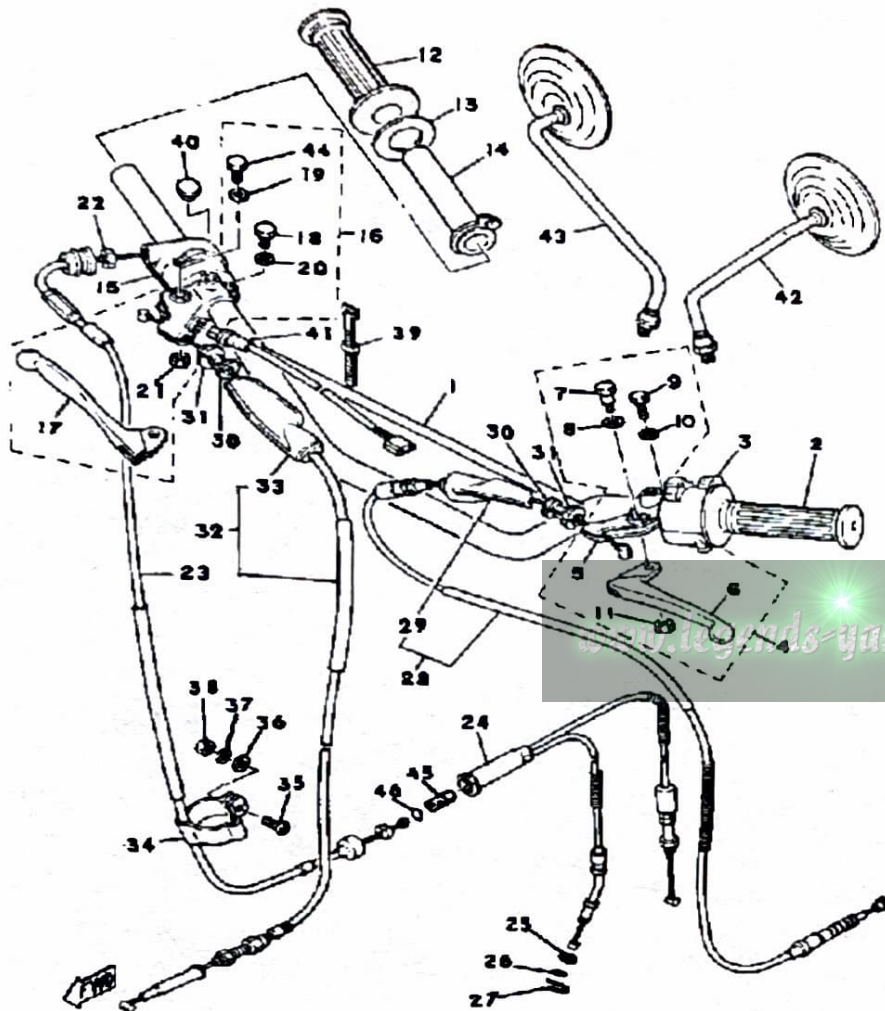
HANDLE - WIRE



Ref. No.	Part Number	Description	Qty	Remarks
1	2A8-26111-00-00	HANDLEBAR	1	
2	1E6-26241-00-00	GRIP LH	1	
3	1M1-83973-50-00	SWITCH, HANDLE 3	1	3005äFOR DAYLIGHT USE
	1R6-83972-00-00	SWITCH, HANDLE 4 0 1	1	1299
4	498-82910-20-00	LEVER HOLDER ASSEMBLY 1	1	
5	3Y6-82911-00-00	HOLDER, LEVER 1	1	
6	1J3-83912-20-00	. LEVER L	1	
7	90109-06797-00	. BOLT	1	
8	90201-08083-00	WASHER, PLATE	1	
9	97003-06022-00	BOLT, HEXAGON (97301-06022)	1	
10	92995-06100-00	WASHER, SPRING	1	
11	95601-06100-00	NUT, U	1	
12	1A0-26242-01-00	GRIP (RIGHT)	1	
13	1M1-26249-01-00	RING, LEAF	1	
14	434-26243-00-00	TUBE, THROTTLE GUIDE	1	
15	1R6-83976-01-00	SWITCH, HANDLE 1	1	
16	2A6-W8292-01-00	LEVER HOLDER ASSEMBLY R (2A6-82920-90)	1	
17	2A6-83922-00-00	. LEVER R	1	
18	97003-06022-00	BOLT, HEXAGON (97301-06022)	1	
19	90201-08083-00	WASHER, PLATE	1	
20	92995-06100-00	WASHER, SPRING	1	
21	95601-06100-00	NUT, U	1	
22	90170-10038-00	NUT, HEXAGON	1	
23	2A6-26311-00-00	CABLE, THROTTLE 1	1	
24	2A6-26312-00-00	CABLE, THROTTLE 2	1	
25	92901-08600-00	WASHER	1	
26	93210-07100-00	O-RING	1	

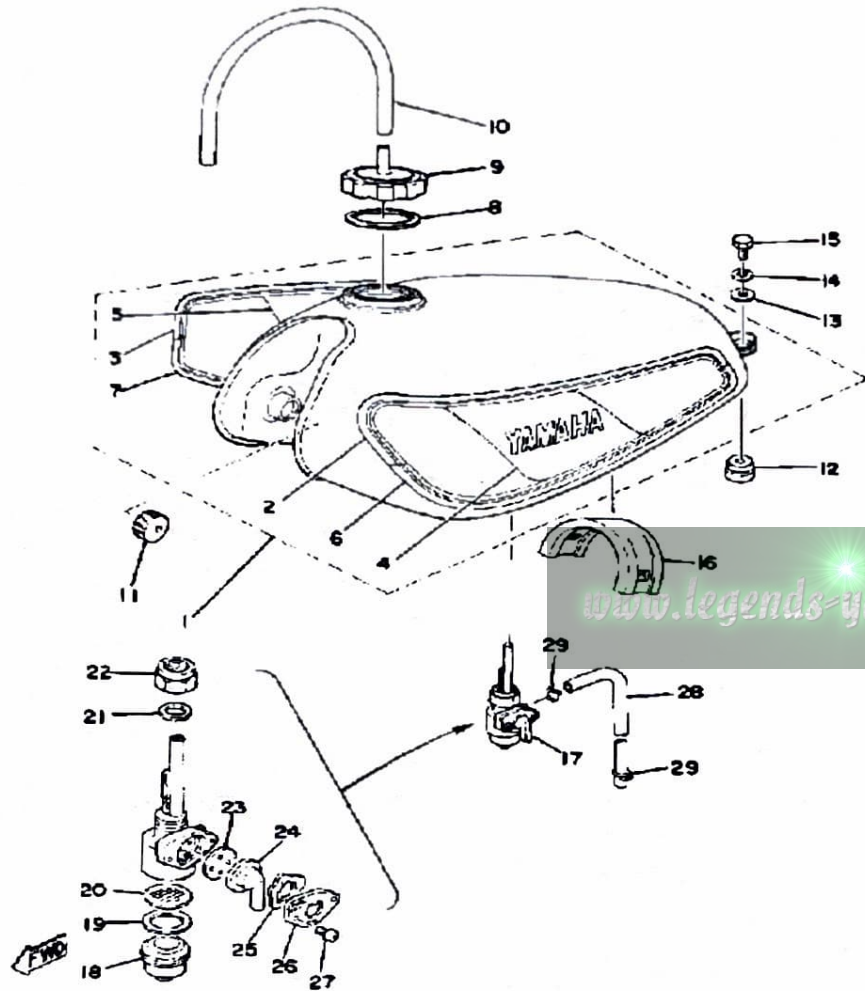
CONTINUED ON NEXT FRAME ►

HANDLE - WIRE



Ref. No.	Part Number	Description	Qty	Remarks
27	90468-08086-00	CLIP	1	
28	2A6-26335-01-00	CABLE, CLUTCH	1	
29	382-26372-01-00	. COVER, HANDLE LEVER ...	1	
30	90123-08046-00	BOLT	2	
31	90179-08148-00	NUT	2	
32	2A6-26341-01-00	CABLE, BRAKE	1	
33	498-26372-00-00	. COVER, HANDLE LEVER 1 ..	1	
34	2A6-26397-00-00	CLAMP	1	
35	98501-05018-00	SCREW, PAN HEAD	1	
36	92901-05600-00	WASHER, PLATE	1	
37	92990-05100-00	WASHER, SPRING	1	
38	95380-05600-00	NUT	1	
39	437-83936-01-00	BAND, SWITCH CORD	4	
40	90338-09012-00	PLUG	1	
41	1M1-83980-30-00	STOP SWITCH ASSEMBLY ...	1	
42	1Y1-26290-10-00	MIRROR ASSEMBLY LH	1	CONVEX MIRROR
43	1Y1-26290-00-00	MIRROR ASSEMBLY RH	1	OPTIONAL PARTS CONVEX MIRROR
44	90109-06797-00	BOLT	1	
45	1M1-26263-00-00	PIECE, CONNECTING	1	
46	93210-10118-00	O-RING	1	

FUEL TANK

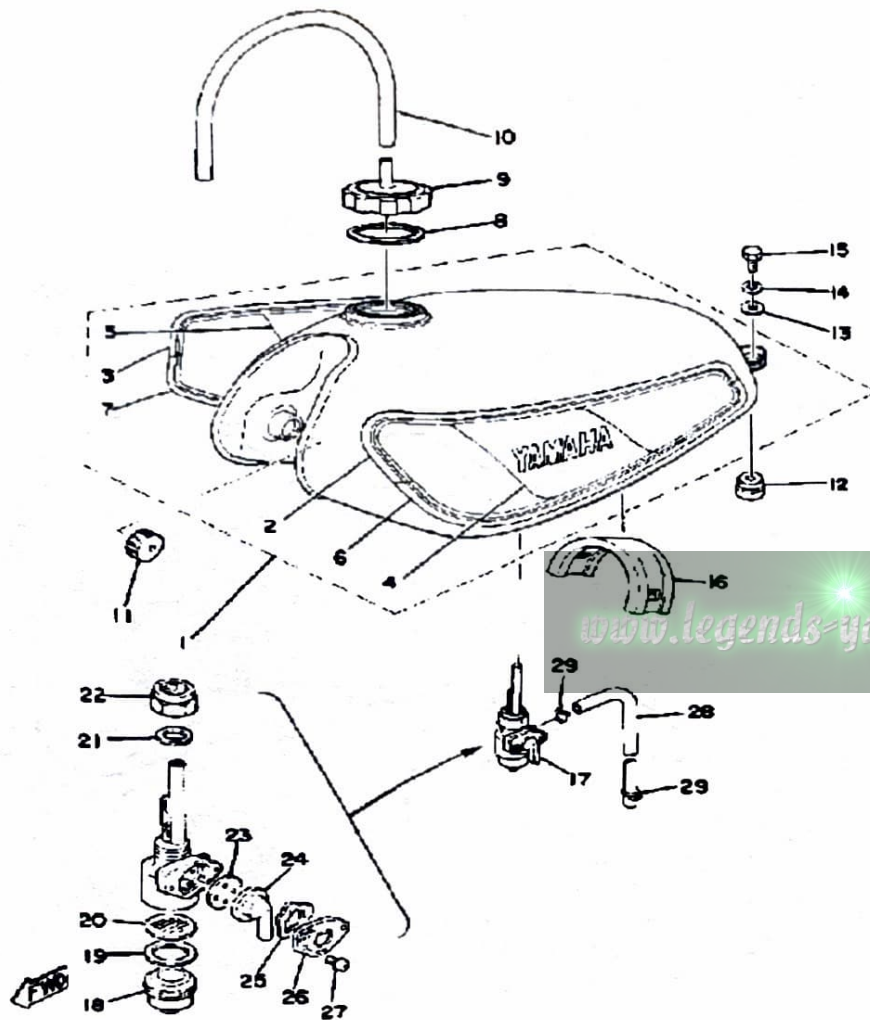


Ref. No.	Part Number	Description	Qty	Remarks
1	(2A6-24110-00-04)	FUEL TANK	1	BALBOA BLUE
	2A6-24110-00-X5	FUEL TANK	1	SUNSHINE RED
2	(2A6-24244-00-00)	GRAPHIC, FUEL TNK 1	1	
3	2A6-24245-00-00	. GRAPHIC, FUEL TNK 2	1	
4	(2A6-24246-10-00)	GRAPHIC, FUEL TNK 3	1	
	2A6-24246-00-00	. GRAPHIC, FUEL TNK 3	1	
5	2A6-24247-00-00	. GRAPHIC, FUEL TNK 4	1	
	2A6-24247-10-00	. GRAPHIC, FUEL TNK 4	1	
6	2A6-24248-00-00	. GRAPHIC, FUEL TNK 5	1	
7	(2A6-24249-00-00)	GRAPHIC, FUEL TNK 6	1	
8	1W1-24612-00-00	GASKET, CAP	1	
9	2A6-24611-00-00	BODY, CAP	1	
10	90445-09115-00	HOSE	1	
11	278-24181-00-00	DAMPER, LOCATING 1	2	
12	2A6-24181-00-00	DAMPER, LOCATING 1	2	
13	90201-06067-00	WASHER, PLATE	2	
14	92995-06100-00	WASHER, SPRING	2	
15	97013-06012-00	BOLT	2	
16	2A6-24182-00-00	DAMPER, LOCATING 2	2	
17	304-24500-12-00	FUEL COCK ASSEMBLY 1 ...	1	
18	1A0-24521-01-00	. CUP, FILTER	1	
19	132-24522-00-00	. GASKET	1	
20	304-24515-00-00	. NET, FILTER 2	1	
21	434-24532-00-00	. GASKET	1	
22	132-24531-00-00	. NUT	1	
23	137-24523-00-00	. GASKET	1	
24	447-24524-00-00	. LEVER, COCK	1	
25	132-24518-00-00	. WASHER, WAVE	1	
26	447-24525-00-00	. PLATE, LEVER FITTING ...	1	

CONTINUED ON NEXT FRAME ►

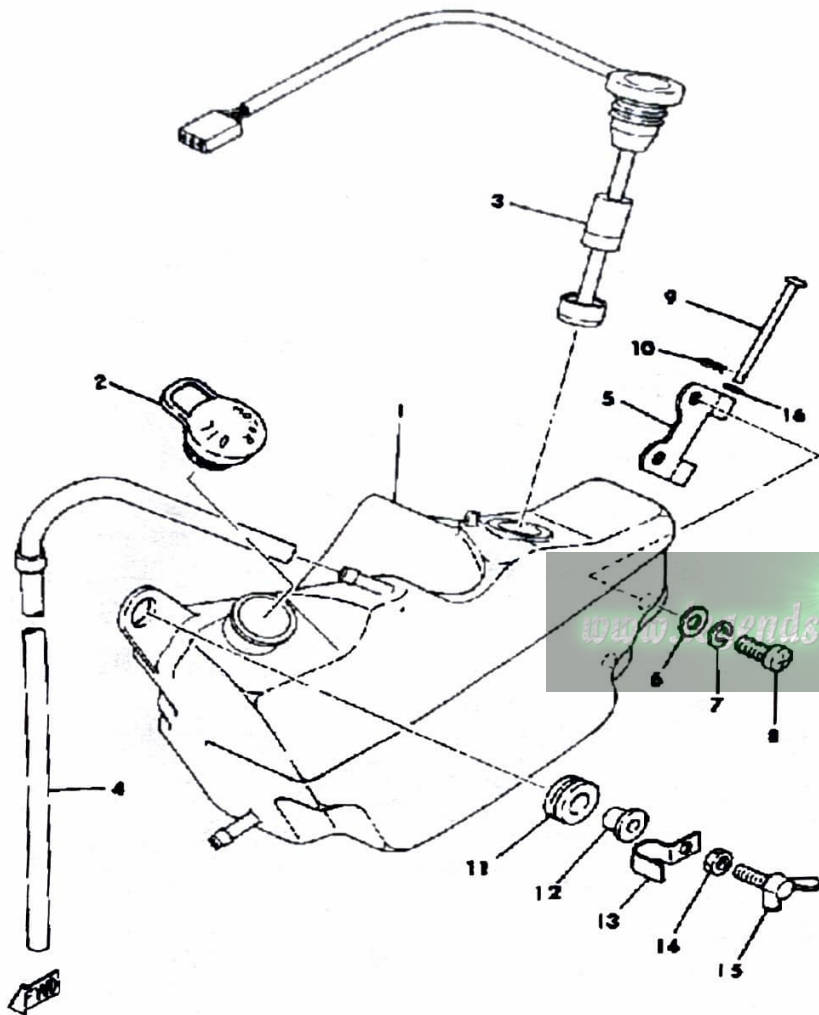
FUEL TANK

Ref. No.	Part Number	Description	Qty	Remarks
27	98580-03008-00	. SCREW, PAN HEAD	2	
28	90445-09089-00	HOSE	1	
29	90467-08003-00	CLIP	2	

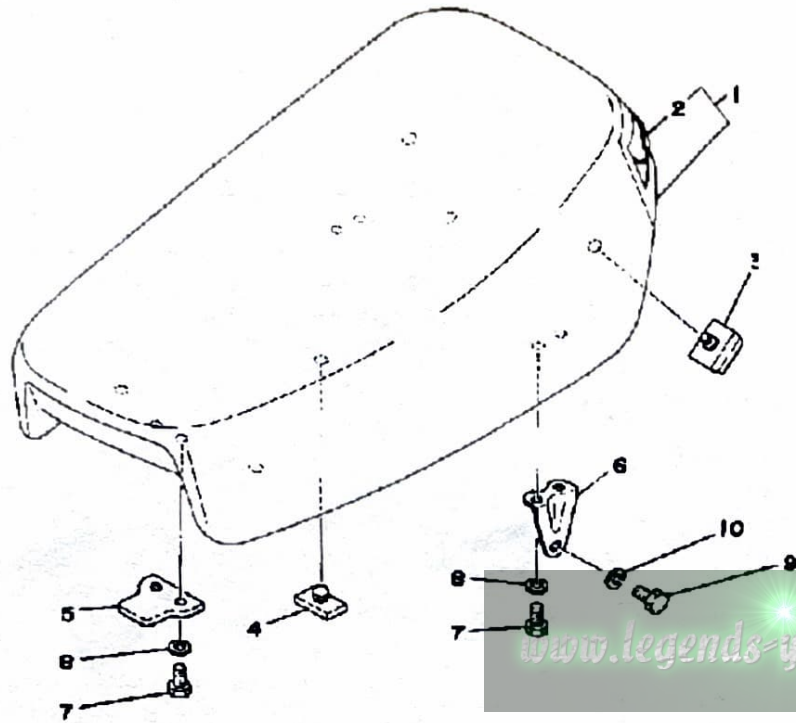


OIL TANK

Ref. No.	Part Number	Description	Qty	Remarks
1	2A6-21751-00-00	TANK, OIL	1	
2	1T9-21771-00-00	BODY, CAP	1	
3	4L0-85720-00-00	OIL LVL GUAGE ASSEMBLY ..	1	
4	90445-09361-00	HOSE	1	
5	2A6-21796-00-00	HINGE	1	
6	90201-06067-00	WASHER, PLATE	2	
7	92995-06100-00	WASHER, SPRING	2	
8	98503-06014-00	SCREW, PAN HEAD (92502-06016)	2	
9	91701-05050-00	PIN, CLEVIS	1	
10	90468-10050-00	CLIP	1	
11	90480-14023-00	GROMMET	1	
12	90387-07391-00	COLLAR	1	
13	90462-05005-00	CLAMP	1	
14	90179-06013-00	NUT, SPEC'L SHAPE	1	
15	90122-06021-00	BOLT, WING (38W)	1	
16	93210-04122-00	O-RING	1	

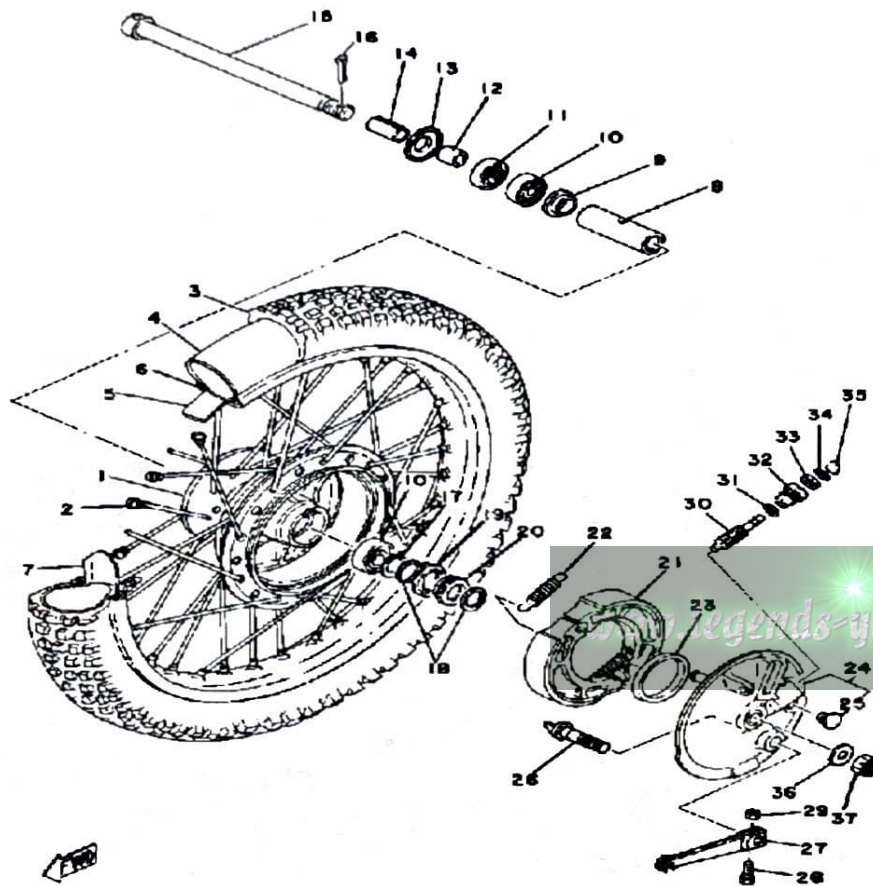


SEAT



Ref. No.	Part Number	Description	Qty	Remarks
1	2A6-W2473-00-00	SEMI-DBL-SEAT ASSEMBLY (2A6-24770-90)	1	
2	2A6-24771-00-00	. COVER, SM-DBL SEAT	1	
3	509-24724-00-00	DAMPER, SEAT	4	
4	214-24724-00-00	DAMPER, SEAT	2	
5	1M1-24748-00-00	BRACKET, SEAT	1	
6	2A6-24738-00-00	BRACKET, SEAT	2	
7	97013-06012-00	BOLT	6	
8	92995-06100-00	WASHER, SPRING	6	
9	97301-08012-00	BOLT, HEXAGON	2	
10	92990-08100-00	WASHER	2	

FRONT WHEEL



BRAKE SHOE THICKNESS

Standard	Minimum
4 mm (0.016 in)	2 mm (0.08 in)

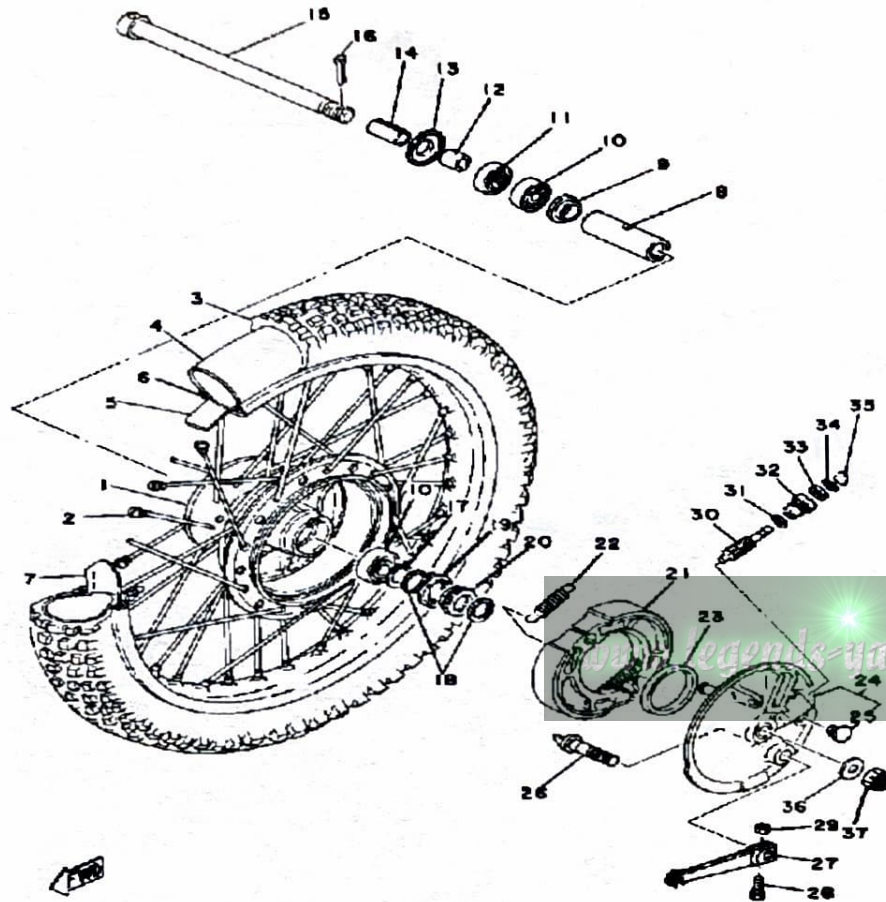
BRAKE SHOE INSTALLED DIAMETER

Standard	Minimum
129.4 mm (5.09 in)	125.4 mm (4.94 in)

Ref. No.	Part Number	Description	Qty	Remarks
1	2A6-25111-00-98	HUB, FRONT	1	LOW GLOSS BLACK
2	2A6-25104-00-00	SPOKE SET, FRONT	1	
3	94127-212X0-00	TIRE (2.75-21)	1	
4	94227-21123-00	TUBE (2.75-21)	1	
5	94330-21084-00	BAND, RIM (3.00-21)	1	
6	94416-21206-00	RIM 1.60X21 (1.60-21) (94416-21312, B, +, F,)	1	
7	1T1-25194-00-00	SPACER, BEAD	1	
8	90560-12261-00	SPACER	1	
9	109-25315-00-00	FLANGE, SPACER	1	
10	93306-30103-00	BEARING (B6301Z)	2	
11	93102-18008-00	OIL SEAL	1	
12	90387-12095-00	COLLAR	1	
13	2K5-25118-00-00	COVER, HUB DUST	1	
14	90287-12100-00	UNAVAILABLE IN PRICE BOOK	1	
15	401-25181-01-00	AXLE, WHEEL	1	
16	91401-30030-00	PIN, COTTER	1	
17	99009-20400-00	CIRCLIP	1	
18	90201-20269-00	WASHER, PLATE	2	
19	183-25149-00-00	CLUTCH, METER	1	
20	37A-25135-00-00	GEAR, DRIVE	1	
21	437-W2536-00-00	BRAKESHOE SET-2PCS	2	
22	90506-17328-00	SPRING, TENSION	2	
23	93105-47007-00	OIL SEAL	1	
24	2A6-25016-00-98	BRAKE SHOE PLT ASSEMBLY (2A6-25120-00-98)	1	LOW GLOSS BLACK
25	90480-10068-00	GROMMET	1	
26	2RH-25351-00-00	CAMSHAFT	1	
27	2N6-25155-00-00	LEVER, CAMSHAFT 1	1	

CONTINUED ON NEXT FRAME ►

FRONT WHEEL



Ref. No.	Part Number	Description	Qty	Remarks
28	90101-06278-00	BOLT	1	
29	95380-06600-00	NUT	1	
30	37A-25138-00-00	GEAR, METER	1	
31	90201-07076-00	WASHER, PLATE	1	
32	109-25136-00-00	BUSH	1	
33	93104-07003-00	OIL SEAL	1	
34	93210-14104-00	O-RING	1	
35	102-25137-00-00	RING, STOP	1	
36	92990-12200-00	WASHER, PLAIN	1	
37	90171-12005-00	NUT, CASTLE	1	

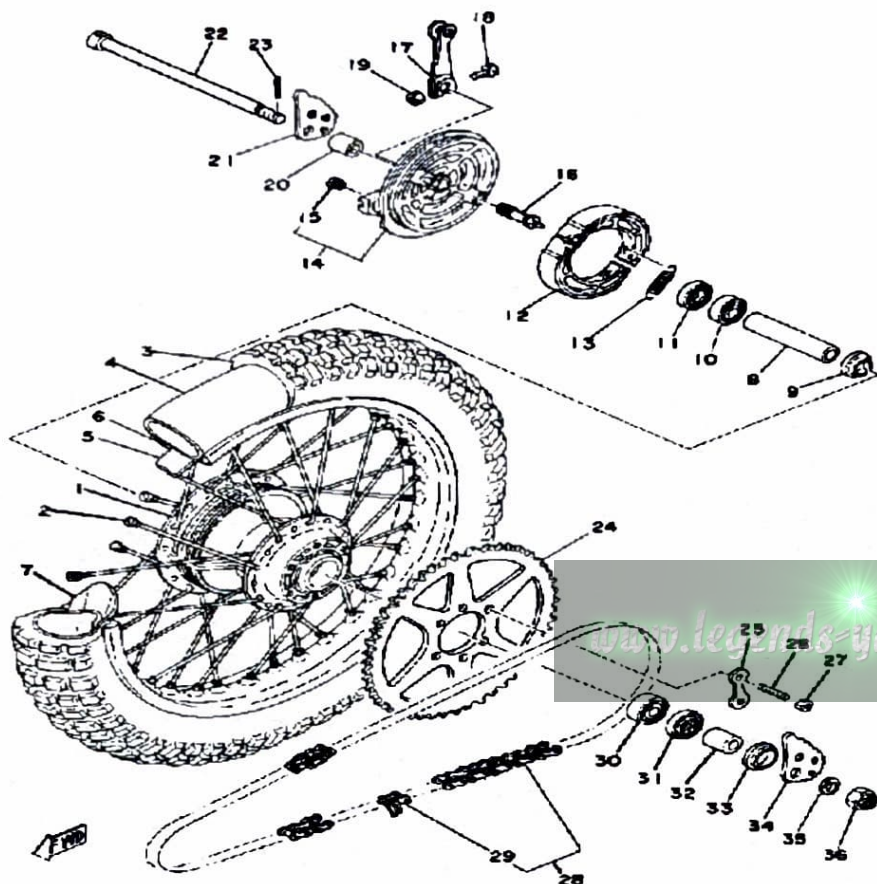
BRAKE SHOE THICKNESS

Standard	Minimum
4 mm (0.016 in)	2 mm (0.08 in)

BRAKE SHOE INSTALLED DIAMETER

Standard	Minimum
129.4 mm (5.09 in)	125.4 mm (4.94 in)

REAR WHEEL



Ref. No.	Part Number	Description	Qty	Remarks
1	1W1-25311-00-98	HUB, REAR	1	LOW GLOSS BLACK
2	401-25304-20-00	COMPLETE REAR WHEEL SPOKE SET	1	
3	(94135-18378-00)	BS 350X18 T 5	1	
4	94230-18084-00	TUBE	1	
5	94345-18081-00	BAND, RIM (4.50-18)	1	
6	94418-18171-00	RIM 1.85X 8	1	
7	1T2-25394-00-00	SPACER, BEAD	1	
8	90560-15313-00	SPACER	1	
9	146-25115-00-00	FLANGE, SPACER 1	1	
10	93306-20226-00	BEARING	1	
11	93104-22018-00	OIL SEAL	1	
12	437-W2536-00-00	BRAKESHOE SET-2PCS	2	
13	90506-17328-00	SPRING, TENSION	2	
14	99999-02024-00	BRAKE SHOE PLT ASSEMBLY (2A6-25026-00-98)BRAKE SHOE PLAT	1	LOW GLOSS BLACK/LOW GLOSS BLACK
15	90480-10068-00	GROMMET	1	
16	2RH-25351-00-00	CAMSHAFT	1	
17	1E2-25155-00-00	LEVER, CAMSHAFT 1	1	
18	90101-06278-00	BOLT	1	
19	95380-06600-00	NUT	1	
20	90387-15524-00	COLLAR	1	
21	1W2-25389-01-00	PULLER, CHAIN 2	1	
22	5X3-25381-00-00	AXLE, WHEEL (2A6-25381-00-00)	1	
23	91401-30030-00	PIN, COTTER	1	
24	18L-25449-20-00	SPROCKET, DRVN 49T	1	
25	1G8-25412-00-00	WASHER	3	

BRAKE SHOE THICKNESS

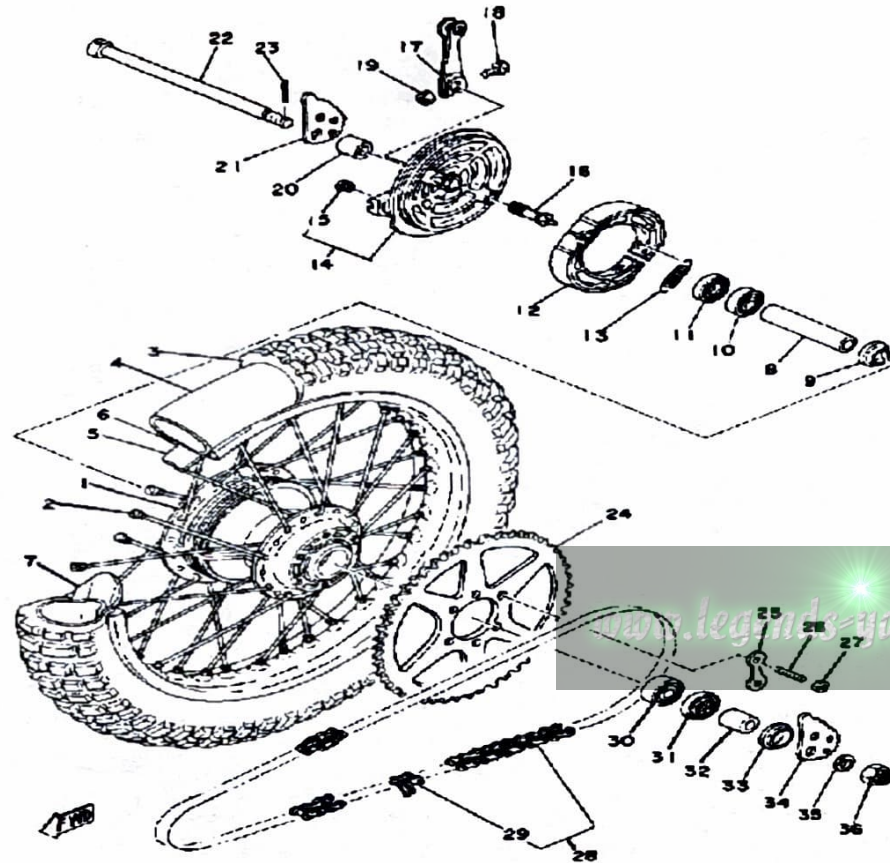
Standard	Minimum
4 mm (0.016 in)	2 mm (0.08 in)

BRAKE SHOE INSTALLED DIAMETER

Standard	Minimum
129.4 mm (5.09 in)	126.4 mm (4.94 in)

CONTINUED ON NEXT FRAME ►

REAR WHEEL



Ref. No.	Part Number	Description	Qty	Remarks
26	90116-10221-00	BOLT, STUD	6	
27	95701-10500-00	NUT, FLANGE (95702-10500) ..	6	
28	94580-33118-00	DID428DS-118L (94580-15118) .	1	
29	94680-15001-00	. JOINT CHAIN	1	
30	93306-30202-00	BEARING	1	
31	93106-26005-00	OIL SEAL	1	
32	90387-15524-00	COLLAR	1	
33	401-25367-00-00	COVER, HUB DUST	1	
34	1W2-25388-01-00	PULLER, CHAIN 1	1	
35	90201-15238-00	WASHER, PLATE	1	
36	90171-14020-00	NUT, CASTLE	1	

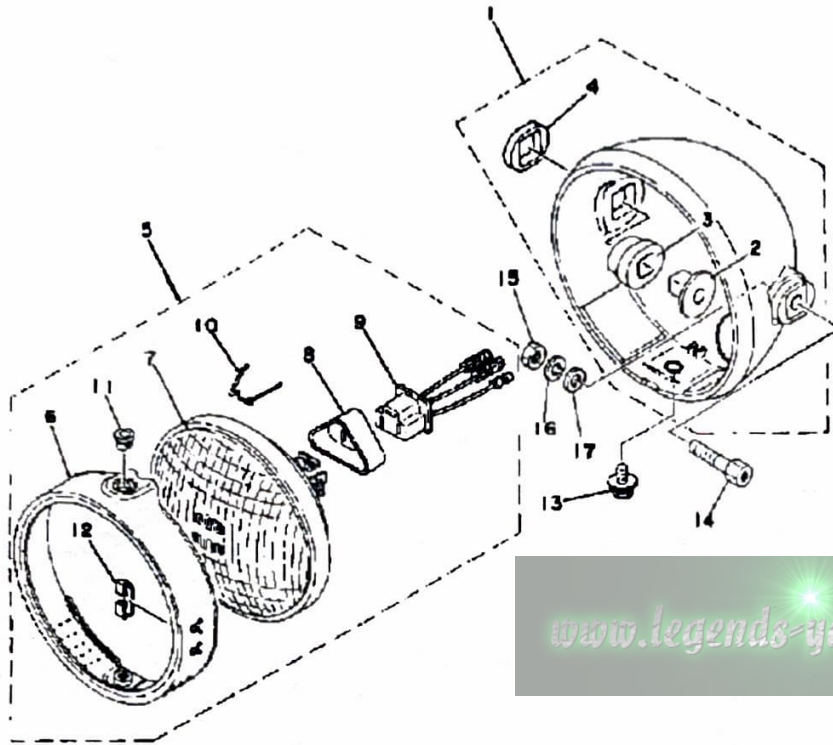
BRAKE SHOE THICKNESS

Standard	Minimum
4 mm (0.016 in)	2 mm (0.08 in)

BRAKE SHOE INSTALLED DIAMETER

Standard	Minimum
129.4 mm (5.09 in)	126.4 mm (4.94 in)

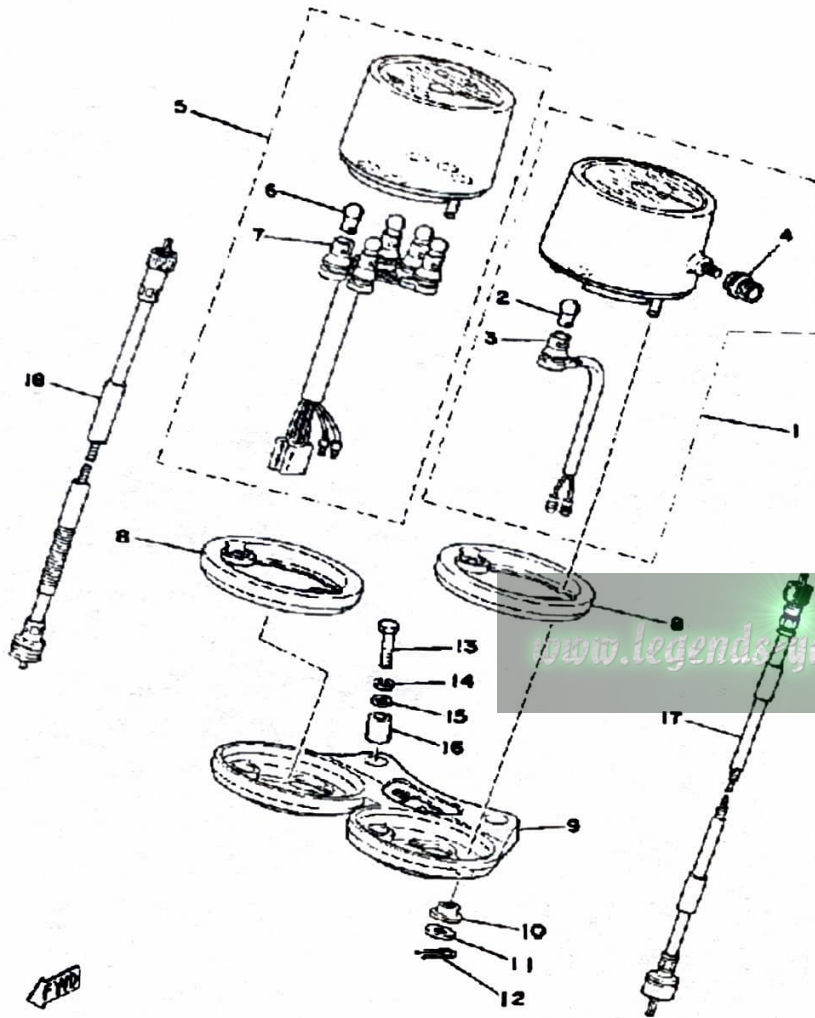
HEAD LAMP



Ref. No.	Part Number	Description	Qty	Remarks
1	1M1-84130-60-00	BODY ASSEMBLY, HEADLIGHT (1M1-84130-60-98)	1	LOW GLOSS BLACK
2	498-84145-60-00	. COLLAR, BODY FITTING	2	
3	498-84163-60-00	. DAMPER	2	
4	1M1-84164-60-00	. DAMPER	2	
5	UNA-VAILA-BL-EI	0 0		
6	1M1-84195-61-00	. RING, RETAINING	1	
7	2A6-84120-60-00	. LENS ASSEMBLY	1	
8	341-84397-61-00	. COVER, SOCKET	1	
9	371-84312-60-00	. SOCKET	1	
10	1M1-84124-60-00	. SPRING, SET	3	
11	1M1-84133-60-00	. COLLAR, SCREW	1	
12	498-84128-60-00	. SPACER	1	
13	1M1-84137-60-00	BOLT, SPECIAL	1	
14	90109-08448-00	BOLT	2	
15	95333-08600-00	NUT	2	
16	92990-08100-00	WASHER	2	
17	92990-08200-00	WASHER, PLAIN	2	

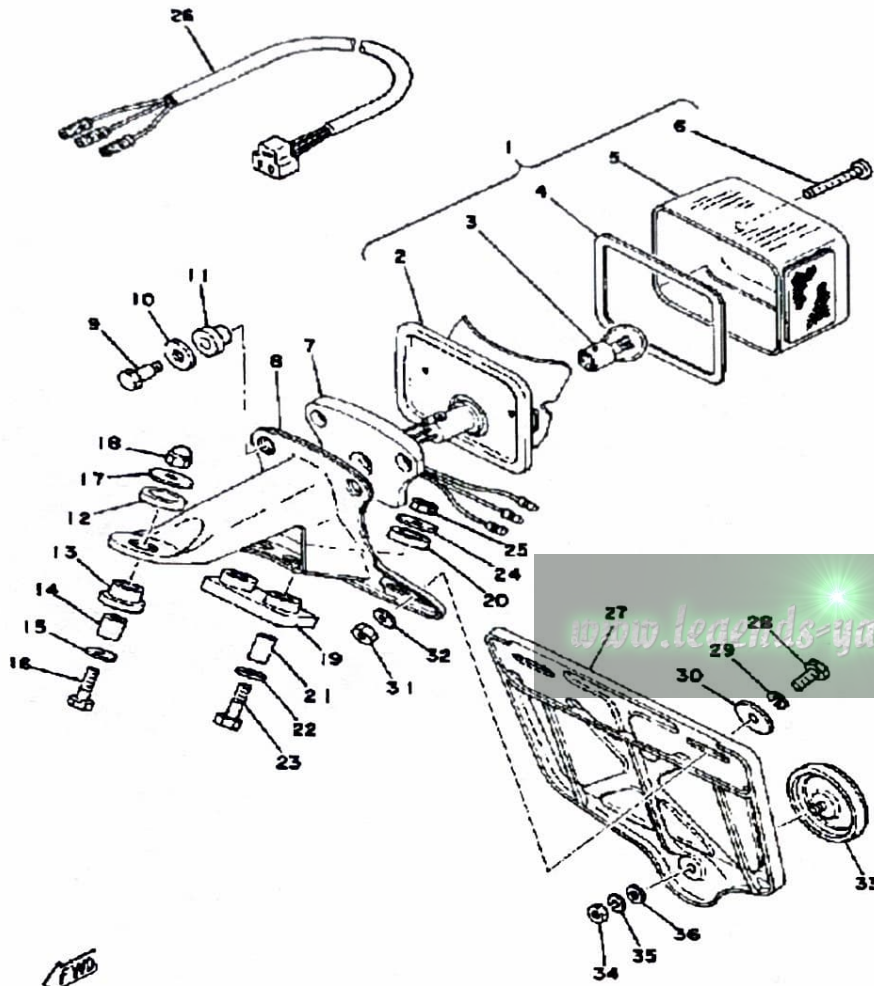
www.legends-yamaha.com

SPEEDOMETER - TACHOMETER



Ref. No.	Part Number	Description	Qty	Remarks
1	3Y3-83570-G0-00	SPEEDOMETER ASSEMBLY ..	1	MILE/H
2	122-83516-10-00	. BULB (122-83516-10)	1	
3	(1M1-83536-00-00)	SOCKET, METER	1	
4	1E6-83578-60-00	. KNOB, TRIP METER	1	
5	2A6-83540-00-00	TACHOMETER ASSEMBLY ...	1	
6	122-83516-10-00	. BULB (122-83516-10)	5	
7	(2A6-83520-00-00)	SOCKET CORD ASSEMBLY ..	1	
8	2A6-83513-00-00	DAMPER	2	
9	2A6-83519-00-00	BRACKET, METER	1	
10	1M1-83526-00-00	DAMPER 2	4	
11	90201-052E2-00	WASHER, PLATE	4	
12	90468-10050-00	CLIP	4	
13	97021-06030-00	BOLT	2	
14	92995-06100-00	WASHER, SPRING	2	
15	92901-06600-00	WASHER	2	
16	90385-06001-00 (214-83528-00)	BUSH, SPEC'L RUBBER	2	
17	2A6-83550-01-00	SPEEDOMETER CABLE (361-83550-00)	1	
18	2A6-83560-00-00	TACHOMETER CABLE	1	

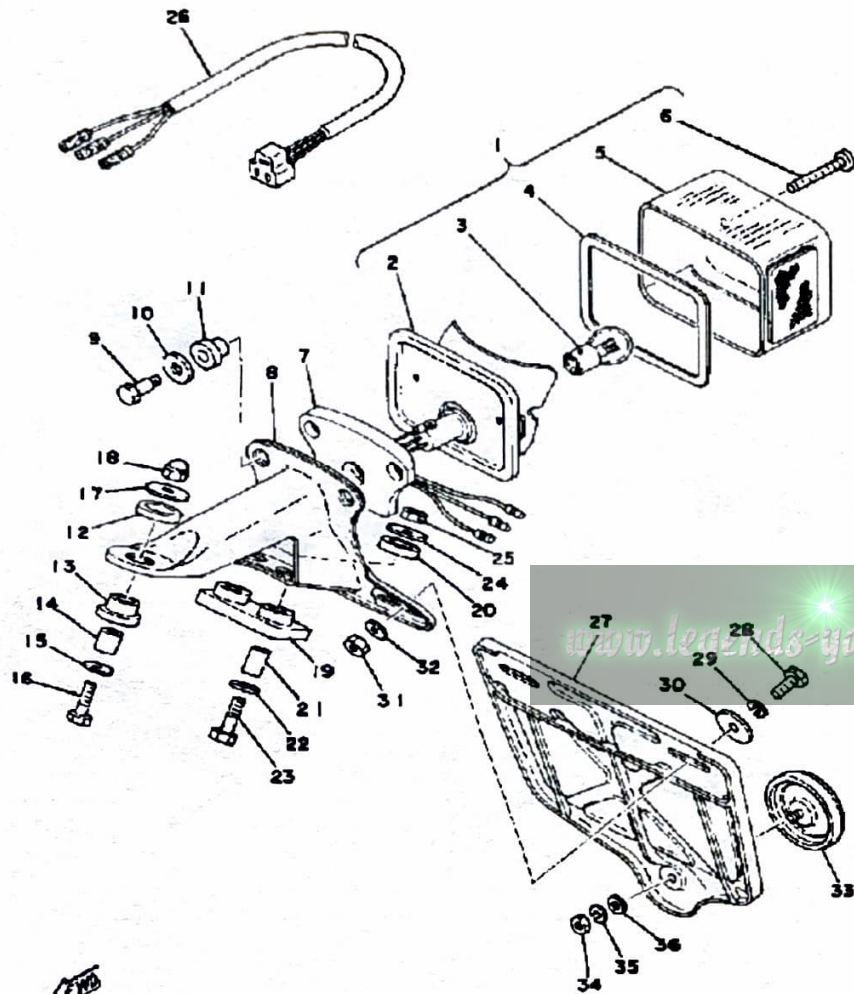
TAIL LAMP



Ref. No.	Part Number	Description	Qty	Remarks
1	1M1-84560-00-	UNAVAILABLE IN PRICE BOOK	1	
2	1M1-84511-60-00	. BASE, TAILLIGHT	1	
3	1M1-84514-60-00	. BULB	1	
4	1M1-84523-60-00	. GASKET, LENS	1	
5	1M1-84521-60-00	. LENS, TAILLIGHT	1	
6	1M1-84524-60-00	. SCREW, LENS FITTING	2	
7	1M1-84512-60-00	SEAT, BASE	1	
8	2A6-84551-60-33	BRACKET, LICENCE	1	
9	1M1-84526-60-00	SCREW	2	
10	2H7-84754-00-00	WASHER, SPECIAL	2	
11	1M1-84527-60-00	DAMPER	2	
12	1M1-84553-10-00	DAMPER	1	
13	1M1-84553-20-00	DAMPER	1	
14	90387-06553-00	COLLAR	1	
15	92901-06600-00	WASHER	1	
16	97011-06025-00	BOLT (97001-06025)	1	
17	90201-06074-00	WASHER, PLATE	1	
18	95303-06800-00	NUT (CROWN)	1	
19	1M1-84553-00-00	DAMPER	1	
20	1M1-84553-10-00	DAMPER	2	
21	90387-06554-00	COLLAR	2	
22	92901-06600-00	WASHER	2	
23	97013-06035-00	BOLT	2	
24	90201-06074-00	WASHER, PLATE	2	
25	95380-06600-00	NUT	2	
26	1M1-84517-00-00	CORD, TAILLIGHT	1	
27	1M1-85132-62-00	BRACKET, REFLECT 1	1	
28	97313-06016-00	BOLT, HEXAGON	2	
29	92995-06100-00	WASHER, SPRING	2	

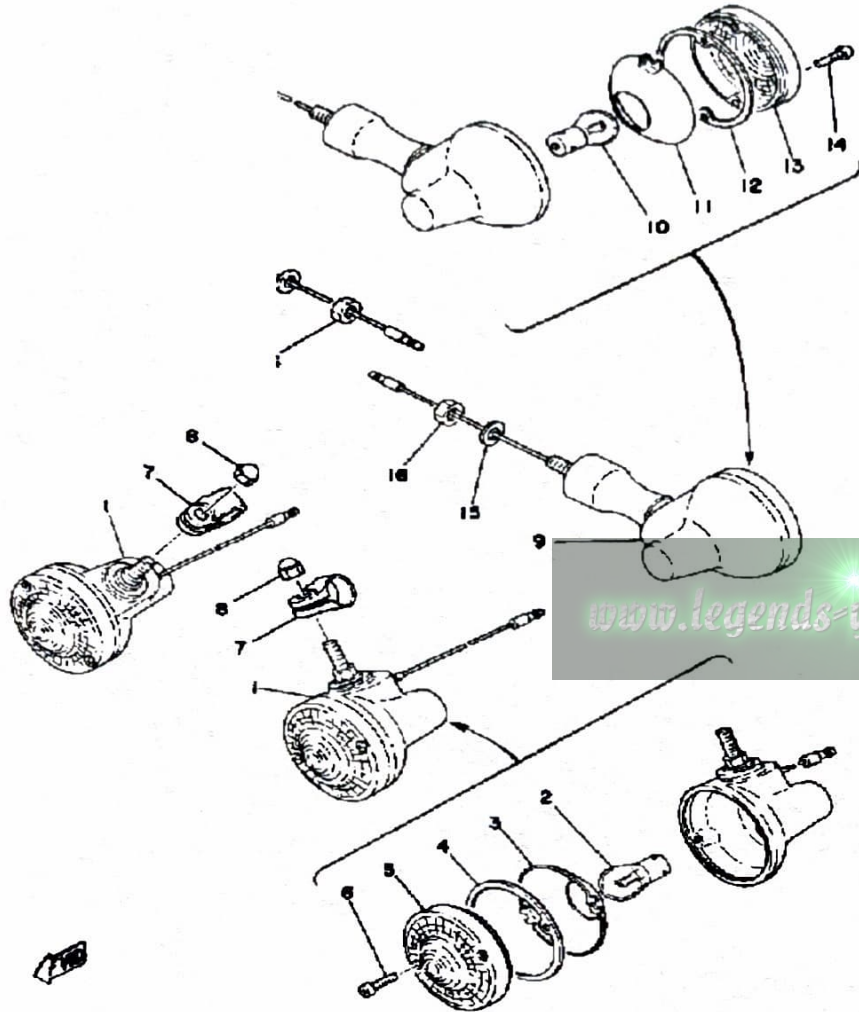
CONTINUED ON NEXT FRAME ►

TAIL LAMP



Ref. No.	Part Number	Description	Qty	Remarks
30	90201-06075-00	WASHER, PLATE	2	
31	95380-06600-00	NUT	2	
32	92901-06600-00	WASHER	2	
33	1M1-85131-10-00	REFLECTOR, REAR 1	1	U.R.
	449-85131-02-00	REFLECTOR, REAR 1	1	U.R.
34	95380-05600-00	NUT	1	
35	92990-05100-00	WASHER, SPRING	1	
36	92990-05200-00	WASHER, PLAIN	1	

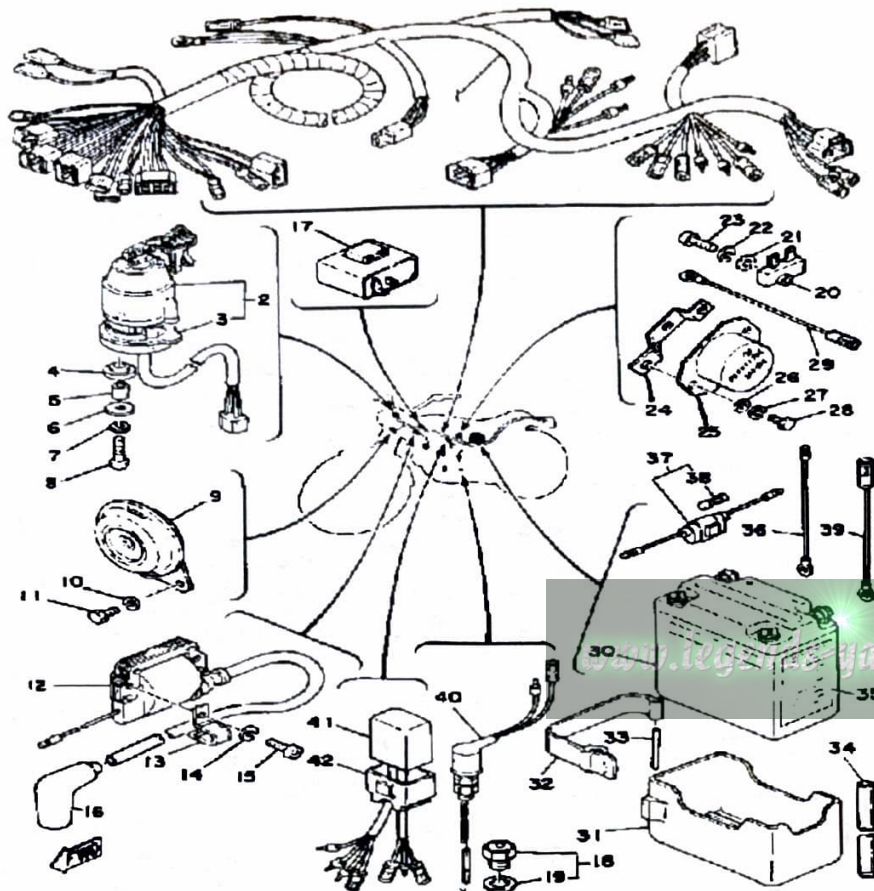
FLASHER LAMP



Ref. No.	Part Number	Description	Qty	Remarks
1	1M1-83310-60-00	FRT FLSHR LITE ASSEMBLY ASSY 1	2	
2	115-83311-60-00	. BULB, FLASHER	2	
3	1M1-83309-60-00	. REFLECTOR	2	
4	1M1-83313-60-00	. GASKET, FLSHR LENS	2	
5	341-83312-70-00	. LENS, FLASHER	2	
6	97780-30120-00	. SCREW, PANHEAD TAP	4	
7	1M1-83318-00-00	STAY, FLASHER 1	2	
8	95303-08800-00	NUT (CROWN) (95301-08800)	2	
9	1T9-83330-60-00	R FLSHR LITE ASSEMBLY	2	
10	115-83311-60-00	. BULB, FLASHER	2	
11	1M1-83309-60-00	. REFLECTOR	2	
12	1M1-83313-60-00	. GASKET, FLSHR LENS	2	
13	341-83312-70-00	. LENS, FLASHER	2	
14	97780-30120-00	. SCREW, PANHEAD TAP	4	
15	92990-10100-00	WASHER, SPRING	2	
16	95303-10600-00	NUT (95301-10600)	2	

ELECTRICAL

Ref. No.	Part Number	Description	Qty	Remarks
1	(2A7-82590-20-00)	WIRE HARNESS ASSEMBLY		
	0 1	1	1299
	(2N5-82590-50-00)	WIRE HARNESS ASSEMBLY		
	0 1	1	3005
2	443-82508-21-00	MAIN SWITCH ASSEMBLY	1	
3	1M1-82555-00-00	. DAMPER, MAIN SWCH 1	1	
4	1M1-82556-00-00	DAMPER, STOPPER	2	
5	437-82516-00-00	COLLAR, MAIN SWITCH	2	
6	90201-05033-00	WASHER, PLATE	2	
7	92990-05100-00	WASHER, SPRING	2	
8	98503-05025-00	SCREW, PAN HEAD (98501-05025)	2	
9	2A7-83371-10-00	HORN	1	
10	92995-06100-00	WASHER, SPRING	2	
11	97013-06012-00	BOLT	2	
12	5G4-82310-40-00	IGNITION COIL ASSEMBLY (J17-82310-21)	1	
13	90462-05005-00	CLAMP	1	
14	92995-06100-00	WASHER, SPRING	2	
15	98580-06020-00	SCREW	2	
16	56J-82370-00-00	PLUG CAP ASSEMBLY	1	
17	3BK-83350-00-00	FLASHER RELAY ASSEMBLY	1	
18	136-82540-00-00	NEUTRAL SWITCH ASSEMBLY	1	
19	37R-82543-00-00	. GASKET	1	
20	1M1-81970-60-00	RECTIFIER ASSEMBLY	1	
21	92901-05600-00	WASHER, PLATE	1	
22	92990-05100-00	WASHER, SPRING	1	
23	98580-05020-00	. SCREW, PAN HEAD	1	
24	2A6-81915-00-00	PLATE, REG FITTING	1	
25	443-81910-62-00	VOLTAGE REG ASSEMBLY (498-81910-23)	1	U.R.

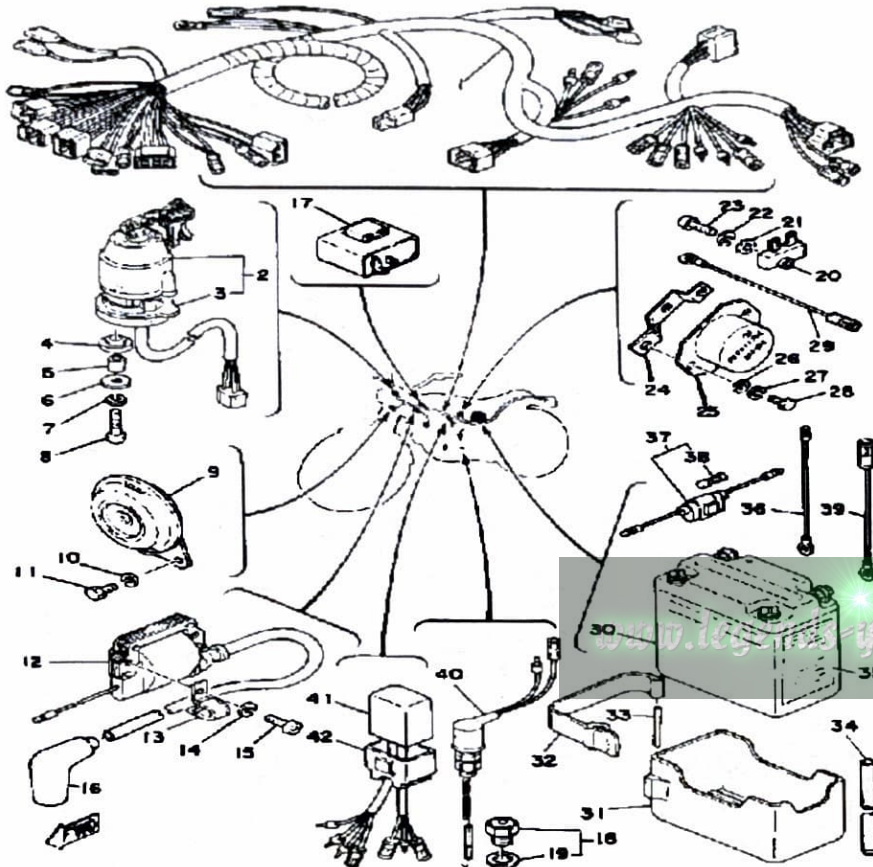


Battery type	6V, 6AH
Electrolyte	Specific gravity: 1.26 Quantity: 250 cc
Initial charging current	0.4 Amperes/15 hours (New battery)
Re-charging current	0.8 Amperes/10 hours (for until specific gravity reaches 1.26)
Re-fill fluid	Distilled water to maximum level line
Re-fill period	Check once per month or more often as required

CONTINUED ON NEXT FRAME ►

ELECTRICAL

Ref. No.	Part Number	Description	Qty	Remarks
25	498-81810-23-00	UNAVAILABLE IN PRICE BOOK (498-81910-22)VOLTAGE REG	1	U.R. U.R.
26	92901-05600-00	WASHER, PLATE	3	
27	92990-05100-00	WASHER, SPRING	3	
28	97313-05012-00	BOLT, HEXAGON	3	
29	1H2-83346-00-00	CORD (1M1-82519-00)	1	
30	BTY-6N63B-10-00	YUASA 6N6-3B-1 (1E6-82110-29)	1	
31	(2A6-82122-00-00)	SEAT, BATTERY	1	
32	2A6-82131-00-00	BAND, BATTERY	1	
33	91401-30040-00	PIN, COTTER	1	
34	(90445-08357-00)	HOSE	1	
35	118-82141-09-00	LABEL, BATTERY	1	
36	J42-82318-00-00	WIRE, SUB-LEAD	1	
37	55K-82150-01-00	FUSE HOLDER ASS'Y (55K-82150-00-00)	1	
38	116-82151-00-00	FUSE (10A)	1	
39	1H2-83346-00-00	CORD (1M1-82519-00)	1	
40	371-82530-03-00	STOP SWITCH ASSEMBLY	1	
41	2A7-85540-20-00	CDI UNIT ASSEMBLY	1	
42	2A7-85546-00-00	BAND	1	



Battery type	6V, 6AH
Electrolyte	Specific gravity: 1.26 Quantity: 250 cc
Initial charging current	0.4 Amperes/15 hours (New battery)
Re-charging current	0.8 Amperes/10 hours (or until specific gravity reaches 1.26)
Re-fill fluid	Distilled water to maximum level line
Re-fill period	Check once per month or more often as required

MOTORCYCLE
M7-025

DT175E
1978 SERVICE DATA

MODEL - IBM I.D. NUMBER	DT175E	2A7
Starting Engine and Frame Number	2A7-000T01	2A7-000T01
Basic Color (fuel tank)	Balboa Blue	
Net Weight	98 kg (218 lbs.)	
ENGINE (type, induction system)	2 stroke, 7-port, single, air-cooled	
Bore x Stroke x Cylinder(s)	66 x 50mm x 1	171cc (10.43 CID)
Compression Ratio (pressure)	6.8:1	
Piston Skirt Clearance (new/max.)	0.035 ~ 0.040mm (.0014 ~ .0015")/0.1mm (.004")	
Ring End Gap (top/2nd/3rd)	0.3 ~ 0.5mm (.012 ~ .020") / Same / ϕ	
Ring Groove Clearance (top/2nd/3rd)	.02 ~ .06mm (.0008 ~ .0024")/0.03 ~ 0.07mm (.0012 ~ .0028) / ϕ	
Valve Clearance (eng. cold) Intake/Exhaust	ϕ	
AUTOLUBE - Minimum Pump Stroke/Color Code	0.20 ~ 0.25mm (.008 ~ .010") Gray	
CARBURETOR (mfr.) (type) (I.D. number)	Mikuni / VM24SS / 55960	
Main Jet	No. 140	(No. 130 - High Altitude)
Needle Jet	0.2	
Jet Needle/Clip Position	4J13-3	
Cutaway	2.5	
Pilot Jet	No. 22.5	
Air Jet	0.5	
Starter Jet	No. 20	
Air Screw (turns out) (idle speed)	1 1/4	(1 1/4 - High Altitude)
Float Level	21.0mm	
Air Filter (type x quantity)	Oiled Foam Rubber x 1	
DRIVE - Primary (type) (teeth) (ratio)	Helical Gear	71/22 3.227
Secondary (type) (teeth) (ratio)	Chain	49/16 3.063
Transmission Ratios 1st (teeth) (ratio) (O.A.)	35/10	3.500 34.592
2nd	31/14	2.214 21.884
3rd	28/18	1.556 15.374
4th	25/21	1.190 11.786
5th	22/23	0.957 9.453
6th	20/25	0.800 7.906
CAPACITIES - Transmission	650 ± 50cc (22.0oz) Yamalube 4-cycle* or SAE 10W/30 Oil	
Oil Tank or Engine Sump	1.0 Lit. (1.1qt.) Yamalube 2-cycle*	
Fuel Tank	7.0 Lit. (1.8 gal.) Low Lead (regular) Unleaded	
Front Forks	148cc (4.9 oz.) SAE 10W/20 wt. Fork Oil*	
Rear Shocks	Monocross	
Tires (size/normal pressure)	Front: 2.75-21/24psi Rear: 3.50-18/28 psi	
ELECTRICAL - Charging System (mfr.) (type)	Mitsubishi / Magneto C.D.I.	
No Load Voltage Adj. (AC & DC generators)	7.0 ± 0.2V	
Max. Generator (Magneto) Output	1.6 ± 0.5A / 8,000 rpm	
Field Coil (and/or) Charging Coil Resistance	ϕ Yellow-Black: 0.18 Ω /Brown-Black: 420 Ω /Red-Black: 13.6 Ω	
Battery (mfr.) (model) (rating) (charge rate)	G.S. 6N6-3B-1 / 0.6A x 10 hours	
Headlight/Tailight/Turn Signal/Ratings	6V36/36W / 6V25/5.3W / 6V17W	
Ign. Coil Min. Spark Gap/Pri. Res./Sec. Res.	6mm / 1.0 Ω ± 10% / 5.9K Ω ± 20%	
Source Coil Res./Pulse Coil Res.	ϕ White/Red-Black: 12.45 Ω / Green/White-Black: 0.30 Ω	
Condenser Capacity/Point Gap	ϕ / ϕ	
Spark Plug (type/gap)/Torque	Champ. N-7Y/0.6 ~ 0.7mm (.024 ~ .028")/2.0m-kg (14.5 ft/lb)	
Timing (advanced) (retarded)	1.8 ± 0.15mm	

N/A = Information Not Available *Available from Yamaha Parts Distributors, Inc.
 ϕ = Does Not Apply To This Model

MOTORCYCLE
M7-025

DT175E
1978 SERVICE DATA

MODEL - IBM I.D. NUMBER	DT175E	2A7
Starting Engine and Frame Number	2A7-000T01	2A7-000T01
Basic Color (fuel tank)	Balboa Blue	
Net Weight	98 kg (218 lbs.)	
ENGINE (type, induction system)	2 stroke, 7-port, single, air-cooled	
Bore x Stroke x Cylinder(s)	66 x 50mm x 1	171cc (10.43 CID)
Compression Ratio (pressure)	6.8:1	
Piston Skirt Clearance (new/max.)	0.035 ~ 0.040mm (.0014 ~ .0015")/0.1mm (.004")	
Ring End Gap (top/2nd/3rd)	0.3 ~ 0.5mm (.012 ~ .020") / Same / ϕ	
Ring Groove Clearance (top/2nd/3rd)	.02 ~ .06mm (.0008 ~ .0024")/0.03 ~ 0.07mm (.0012 ~ .0028) / ϕ	
Valve Clearance (eng. cold) Intake/Exhaust	ϕ	
AUTOLUBE - Minimum Pump Stroke/Color Code	0.20 ~ 0.25mm (.008 ~ .010") Gray	
CARBURETOR (mfr.) (type) (I.D. number)	Mikuni / VM24SS / 55960	
Main Jet	No. 140	(No. 130 - High Altitude)
Needle Jet	0.2	
Jet Needle/Clip Position	4J13-3	
Cutaway	2.5	
Pilot Jet	No. 22.5	
Air Jet	0.5	
Starter Jet	No. 20	
Air Screw (turns out) (idle speed)	1 1/4	(1 1/4 - High Altitude)
Float Level	21.0mm	
Air Filter (type x quantity)	Oiled Foam Rubber x 1	
DRIVE - Primary (type) (teeth) (ratio)	Helical Gear	71/22 3.227
Secondary (type) (teeth) (ratio)	Chain	49/16 3.063
Transmission Ratios 1st (teeth) (ratio) (O.A.)	35/10	3.500 34.592
2nd	31/14	2.214 21.884
3rd	28/18	1.556 15.374
4th	25/21	1.190 11.786
5th	22/23	0.957 9.453
6th	20/25	0.800 7.906
CAPACITIES - Transmission	650 ± 50cc (22.0oz) Yamalube 4-cycle* or SAE 10W/30 Oil	
Oil Tank or Engine Sump	1.0 Lit. (1.1qt.) Yamalube 2-cycle*	
Fuel Tank	7.0 Lit. (1.8 gal.) Low Lead (regular) Unleaded	
Front Forks	148cc (4.9 oz.) SAE 10W/20 wt. Fork Oil*	
Rear Shocks	Monocross	
Tires (size/normal pressure)	Front: 2.75-21/24psi Rear: 3.50-18/28 psi	
ELECTRICAL - Charging System (mfr.) (type)	Mitsubishi / Magneto C.D.I.	
No Load Voltage Adj. (AC & DC generators)	7.0 ± 0.2V	
Max. Generator (Magneto) Output	1.6 ± 0.5A / 8,000 rpm	
Field Coil (and/or) Charging Coil Resistance	ϕ Yellow-Black: 0.18 Ω /Brown-Black: 420 Ω /Red-Black: 13.6 Ω	
Battery (mfr.) (model) (rating) (charge rate)	G.S. 6N6-3B-1 / 0.6A x 10 hours	
Headlight/Tailight/Turn Signal/Ratings	6V36/36W / 6V25/5.3W / 6V17W	
Ign. Coil Min. Spark Gap/Pri. Res./Sec. Res.	6mm / 1.0 Ω ± 10% / 5.9K Ω ± 20%	
Source Coil Res./Pulse Coil Res.	ϕ White/Red-Black: 12.45 Ω / Green/White-Black: 0.30 Ω	
Condenser Capacity/Point Gap	ϕ / ϕ	
Spark Plug (type/gap)/Torque	Champ. N-7Y/0.6 ~ 0.7mm (.024 ~ .028")/2.0m-kg (14.5 ft/lb)	
Timing (advanced) (retarded)	1.8 ± 0.15mm	

N/A = Information Not Available *Available from Yamaha Parts Distributors, Inc.
 ϕ = Does Not Apply To This Model



TECHNICAL BULLETIN