

# YAMAHA

## PARTS CATALOGUE

### IT465H (4V6)

[www.legends-yamaha-enduros.com](http://www.legends-yamaha-enduros.com)

114V6-300E1

[www.legends-yamaha-enduros.com](http://www.legends-yamaha-enduros.com)

# FOREWORD

This Parts Catalogue is related to the parts in use for the Yamaha IT 465H (4V6).  
When you are ordering replacement parts for the IT 465H (4V6), refer to this Parts Catalogue and quote both part numbers and part names correctly.

1. Modifications or additions which have been made after issue of the Parts Catalogue will be announced in the Yamaha Parts News.  
It is advisable that according to the Yamaha Parts News you make necessary corrections to the Parts Catalogue on hand to keep it up-to-date.

## 2. Abbreviations

The following abbreviations are used in this Parts Catalogue.

- U.R. Use size (thickness) and/or number as required.
- U.N. Use as many as you need.
- A.P. Alternate Parts
- L.M. Local Made
- F# Frame No. (Applicable machine No.)

3. The parts marked with (\*) in the parts number column of this Catalogue are not supplied with by Yamaha, those have to be found locally.
4. Parts, which are to be supplied in the form of assemblies, are listed with an indentation of one letter's space, and a dot ( . ) is put against the name of each part.

**EXAMPLE**  
 . CARBURETOR ASS'Y  
 . JET, pilot  
 . NOZZLE, main

## 5. Indication of No. of constituent parts for assembly

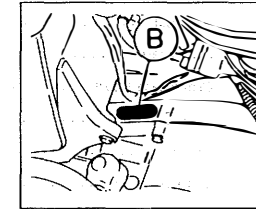
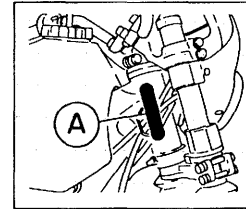
The numeral appearing to the right of each constituent part under the description indicates the quantity of such parts for each individual assembly unit.

**EXAMPLE**

Part No.	Description	Q'ty	Remarks
2F5-83310-60	FRONT FLASHER LIGHT ASS'Y	2	
115-83311-60	. BULB (6V-18W)	1	
1M1-83309-60	. REFLECTOR	1	

## 6. Initial Serial No. and Color Code

(A) Frame Serial No.	4V6-000101 and following
(B) Engine Serial No.	4V6-000101 and following



Color Code	Color Name	Abbreviate
	Sky Blue	
www.legends-yamaha-enduros.com		

7. Applicable colors of graphics are represented in the "Remarks" column by the letter(s) appropriately picked out of the full word(s) showing such colors.

**EXAMPLE**

Part No.	Description	Q'ty	Remarks
2N4-24110-00-X5	FUEL TANK COMP.	1	MAXIM RED
3J1-24240-10	. GRAPHIC, fuel tank set	1	for MXR

# CONTENTS

## ENGINE

Fig. 1	Cylinder .....	1
Fig. 2	Crankshaft · Piston .....	2
Fig. 3	C.D.I. Magneto .....	3
Fig. 4	Intake .....	4
Fig. 5	Carburetor .....	5
Fig. 6	Exhaust .....	7
Fig. 7	Crankcase .....	8
Fig. 8	Crankcase Cover .....	9
Fig. 9	Kick Starter .....	10
Fig. 10	Clutch .....	11
Fig. 11	Transmission .....	13
Fig. 12	Shift Cam · Fork .....	15
Fig. 13	Shift Shaft · Pedal .....	16

## CHASSIS

Fig. 14	Frame .....	17
Fig. 15	Front Fender · Rear Fender .....	18
Fig. 16	Side Cover .....	19
Fig. 17	Rear Arm .....	20
Fig. 18	Rear Suspension .....	22
Fig. 19	Steering .....	24
Fig. 20	Front Fork .....	25
Fig. 21	Fuel Tank .....	27
Fig. 22	Seat .....	29
Fig. 23	Front Wheel .....	30
Fig. 24	Rear Wheel .....	32
Fig. 25	Handlebar · Cable .....	34
Fig. 26	Stand · Footrest .....	36
Fig. 27	Meter .....	38
Fig. 28	Headlight .....	39

Fig. 29	Taillight .....	40
Fig. 30	Electrical 1 .....	41
Fig. 31	Handle Switch · Lever .....	42

## ALTERNATE PARTS

Fig. 32	Alternate (Chassis) .....	43
---------	---------------------------	----

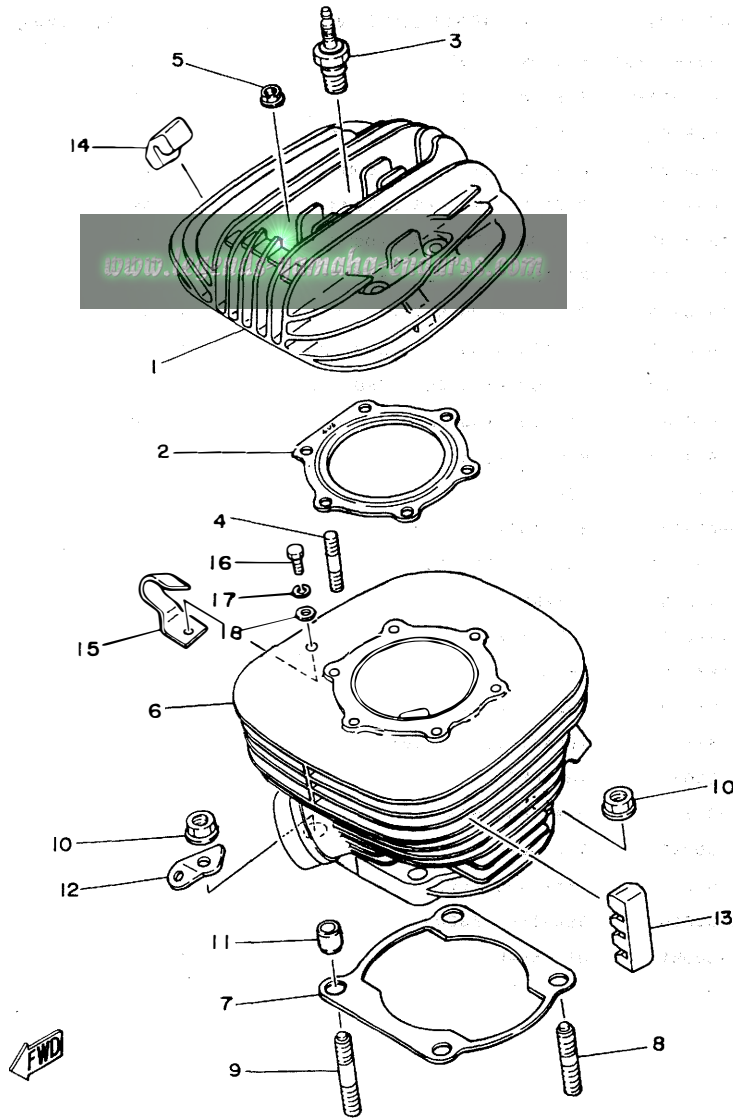
## REPAIR KIT

Fig. 33	Repair Kit .....	44
---------	------------------	----

## INDEX

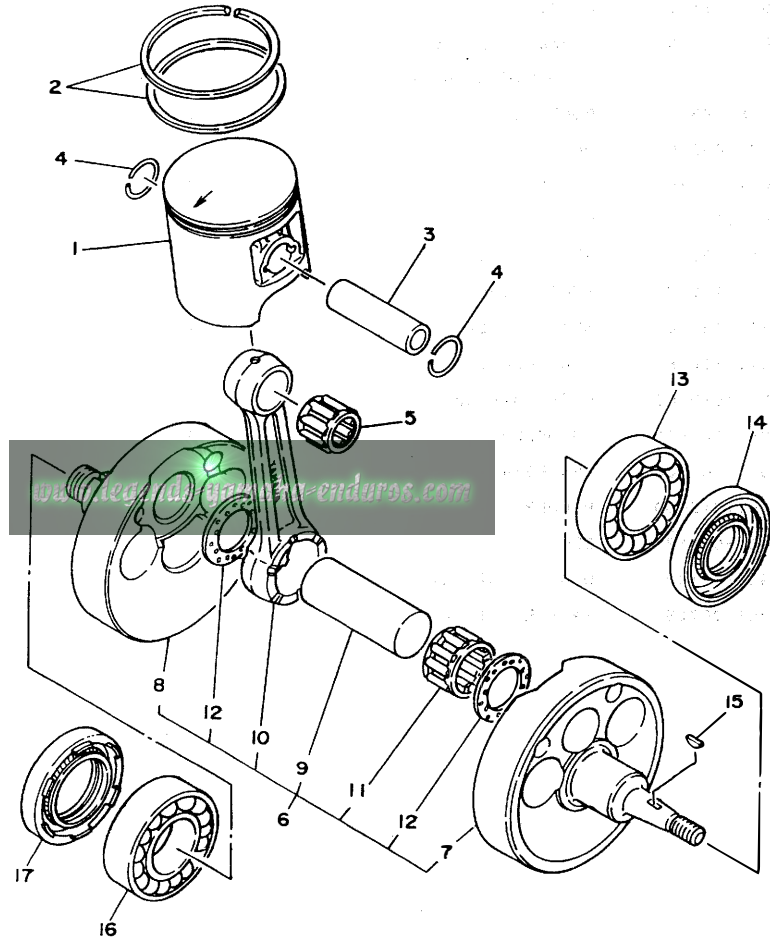
Numerical Index
Parts Name Index

FIG. 1 CYLINDER



REF. NO.	PART NO.	DESCRIPTION	Q'TY	REMARKS
1	3R5-11111-00	HEAD, cylinder 1	1	
2	4V6-11181-00	GASKET, cylinder head 1	1	
3	*	PLUG, spark (CHAMPION N3)	1	LM
4	90116-08321	BOLT, stud	6	
5	90179-08299	NUT	6	
6	4V6-11311-00	CYLINDER 1	1	
7	3R5-11351-00	GASKET, cylinder	1	
8	90116-12315	BOLT, stud	2	
9	90116-12316	BOLT, stud	2	
10	95701-12100	NUT, flange	4	
11	91810-17016	PIN, dowel	2	
12	3R5-14619-00	HOOK, spring	1	
13	2N6-11127-00	ABSORBER 3	2	
14	4V5-11161-00	ABSORBER 1	1	
15	4V5-1131E-00	HOLDER 1	1	
16	97301-06010	BOLT	1	
17	92901-06100	WASHER, spring	1	
18	90201-06709	WASHER, Plate	1	

FIG. 2 CRANKSHAFT.PISTON

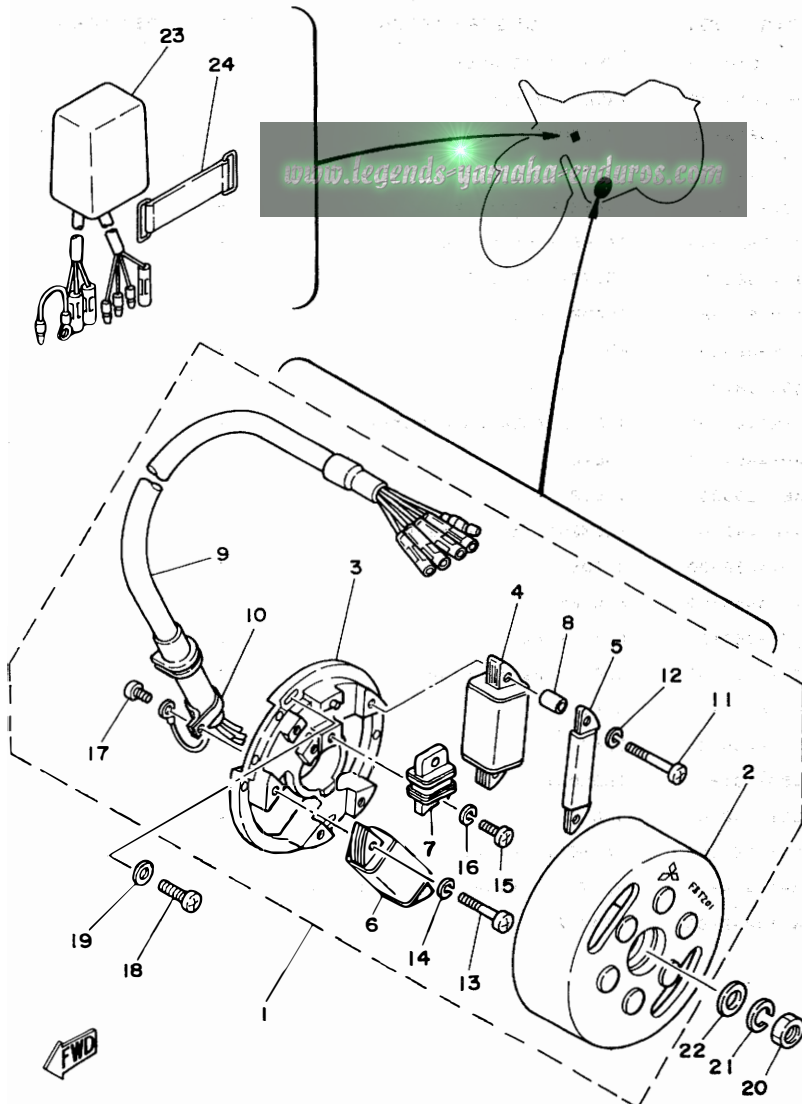


REF. NO.	PART NO.	DESCRIPTION	Q'TY	REMARKS
1	4V6-11631-00-94	PISTON (STD)	1	UR
	4V6-11631-00-96	PISTON (STD)	1	UR
	4V6-11635-00	PISTON (1ST O/S 0.25MM)	1	AP
	4V6-11636-00	PISTON (2ND O/S 0.50MM)	1	AP
	4V6-11637-00	PISTON (3RD O/S 0.75MM)	1	AP
	4V6-11638-00	PISTON (4TH O/S 1.00MM)	1	AP
2	4V6-11610-00	PISTON RING SET (STD)	1	
	4V6-11610-10	PISTON RING SET (1ST O/S)	1	AP
	4V6-11610-20	PISTON RING SET (2ND O/S)	1	AP
	4V6-11610-30	PISTON RING SET (3RD O/S)	1	AP
	4V6-11610-40	PISTON RING SET (4TH O/S)	1	AP
3	275-11633-00	PIN, Piston	1	
4	93450-19052	CIRCLIP	2	
5	93310-418E9	BEARING, cylindrical	1	
6	4V6-11400-00	CRANKSHAFT ASSY	1	
7	4V6-11412-00	•CRANK 1	1	
8	4V6-11422-00	•CRANK 2	1	
9	3R5-11681-00	•PIN, crank 1	1	
10	3R5-11651-00	•ROD, connecting	1	
11	93310-42541	•BEARING, cylindrical	1	
12	90209-25085	•WASHER	2	
13	93306-30615	BEARING (B6306)	1	
14	93103-30092	OIL SEAL	1	
15	90280-03017	KEY, woodruff	1	
16	93306-30615	BEARING (B6306)	1	
17	93103-40091	OIL SEAL	1	



**B3**

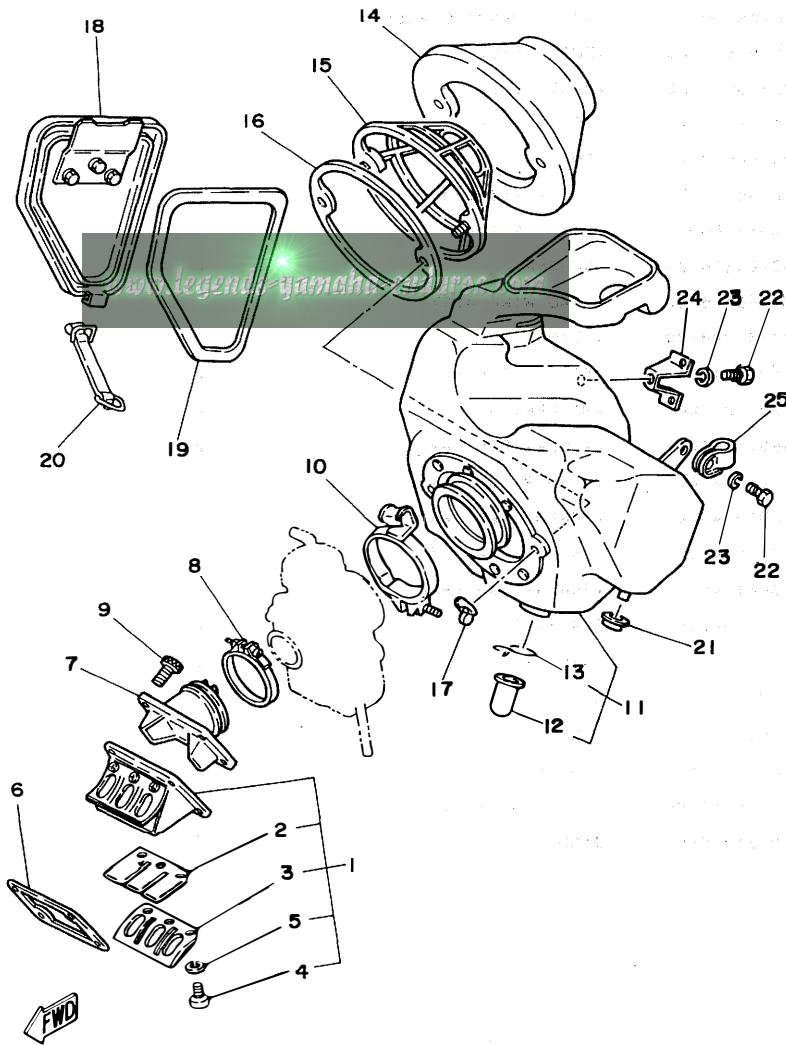
FIG. 3 C.D.I MAGNETO



REF. NO.	PART NO.	DESCRIPTION	Q'TY	REMARKS
1	4V6-85500-20	C.D.I. MAGNETO ASSY	1	
2	3R5-85550-20	•ROTOR ASSY	1	
3	3R5-85509-20	•BASE, magneto	1	
4	3R5-85511-20	•COIL, source	1	
5	3R5-85512-20	•COIL, source	1	
6	4V6-85513-20	•COIL, lighting. 1	1	
7	4V6-85580-20	•COIL, Pulser	1	
8	1W2-85516-20	•SPACER	2	
9	4V6-85515-20	•LEAD WIRE ASSY	1	
10	104-81328-20	•CLAMP	1	
11	98501-04035	•SCREW, Pan head	2	
12	92901-04100	•WASHER, sPring	2	
13	98501-04030	•SCREW, Pan head	2	
14	92901-04100	•WASHER, sPring	2	
15	98501-04014	•SCREW, Pan head	1	
16	92901-04100	•WASHER, sPring	1	
17	110-81345-21	•SCREW, Pan head	1	
18	92501-06020	SCREW, Pan head	2	
19	92901-06600	WASHER, Plate	2	
20	90170-12067	NUT	1	
21	92901-12100	WASHER, sPring	1	
22	90201-12593	WASHER, Plate	1	
23	3R5-85540-20	C.D.I. UNIT ASSY	1	
24	288-21376-00	BAND, tool	1	

B4

FIG. 4 INTAKE



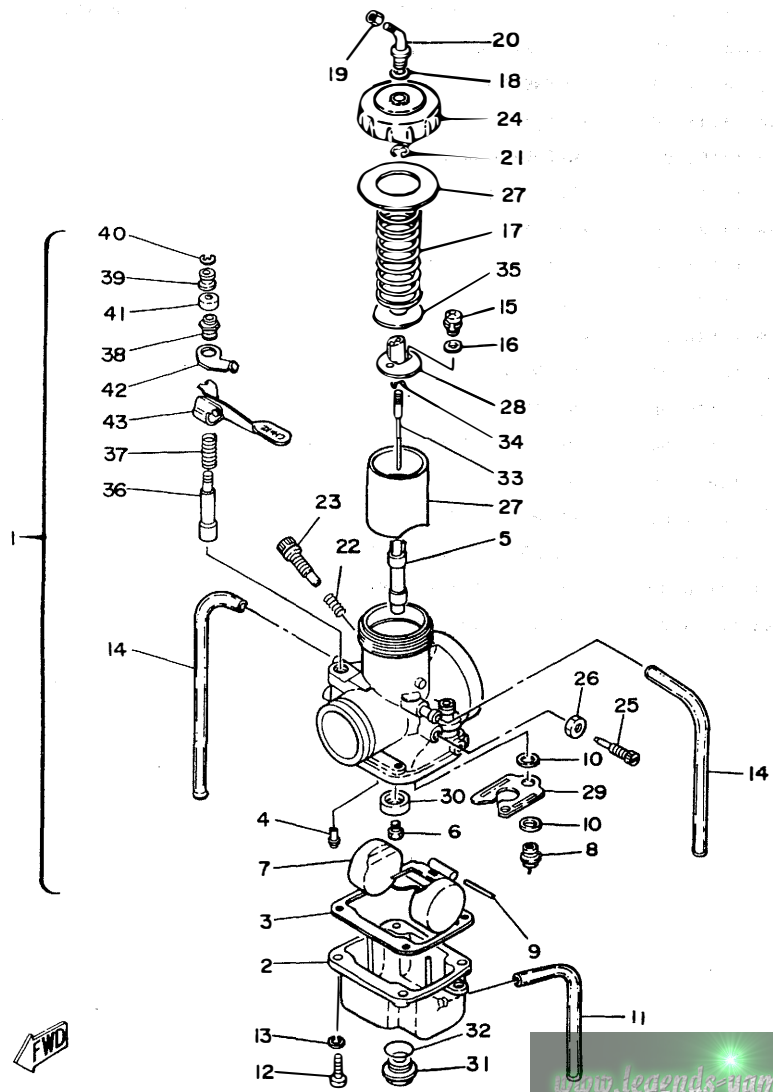
REF. NO.	PART NO.	DESCRIPTION	Q'TY	REMARKS
1	3R5-13610-00	REED VALVE ASSY	1	
2	3R5-13613-00	•REED, valve	1	
3	2X5-13616-00	•STOPPER, reed valve	2	
4	98501-03008	•SCREW, Pan head	6	
5	92901-03100	•WASHER, sPring	6	
6	2K7-13621-00	GASKET, valve seat	1	
7	3R4-13565-00	JOINT, carburetor	1	
8	90460-51109	CLAMP, hose	1	
9	91316-06020	BOLT	4	
10	90460-68120	CLAMP, hose	1	
11	4V5-W1441-00	AIR CLEANER CASE COMP.	1	
12	1W4-14457-00	•SEAL	1	
13	90467-20030	•CLIP	1	
14	3R4-W1442-01	ELEMENT, air cleaner	1	
15	3R4-14458-00	GUIDE	1	
16	4V4-14459-00	HOLDER, guide	1	
17	90175-06012	NUT, wing	2	
18	4V5-14412-00	CAP, cleaner case 1	1	
19	4V5-14452-01	SEAL	1	
20	4V5-14455-00	BAND	1	
21	90480-13197	GROMMET	1	
22	97301-06016	BOLT	4	
23	92901-06100	WASHER, sPring	4	
24	4V4-14484-00	PLATE, cleaner case fitting	1	
25	4V4-14499-00	STAY 2	1	



P.N. 8106

Rev. 11

FIG. 5 CARBURETOR



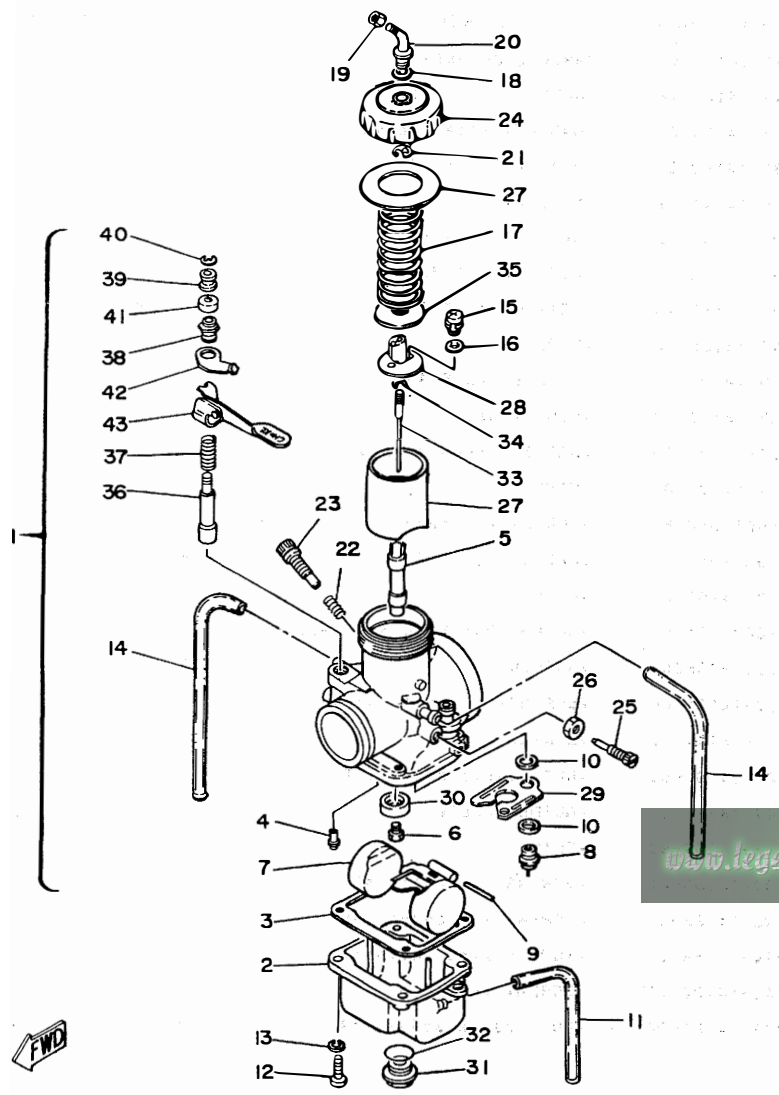
REF. NO.	PART NO.	DESCRIPTION	Q'TY	REMARKS
1	4V6-14101-00	CARBURETOR ASSY 1	1	
2	3R4-14181-16	•BODY, float chamber 1	1	
3	363-14184-00	•GASKET, float chamber	1	
4	193-14142-35	•JET, Pilot (#35.0)	1	
5	510-14141- <del>70</del> <sup>48</sup>	•NOZZLE, main	1	
6	137-14143- <del>70</del> <sup>76</sup>	•JET, main (# <del>350</del> <sup>380</sup> )	1	UR STD
	137-14143- <del>70</del> <sup>74</sup>	•JET, main (# <del>350</del> <sup>370</sup> )	1	UR
	137-14143- <del>70</del> <sup>78</sup>	•JET, main (# <del>350</del> <sup>390</sup> )	1	UR
7	2N7-14185-00	•FLOAT	1	
8	363-14190-35	•NEEDLE VALVE ASSY	1	
9	537-14186-00	•PIN, float	1	
10	239-14195-00	•WASHER, needle valve	2	
11	2K7-14197-00	•PIPE	1	
12	98501-05016	•SCREW, Pan head	4	
13	92902-05100	•WASHER, sPring	4	
14	310-14197-00	•PIPE	2	
15	97602-03108	•SCREW, Pan head with washer	2	
16	92902-03600	•WASHER	2	
17	363-14131-00	•SPRING, throttle valve	1	
18	8F2-14147-00	•O-RING	1	
19	127-14161-00	•NUT, cable adjusting	1	
20	3R4-14155-00	•GUIDE, cable	1	
21	363-14137-00	•CLIP	1	
22	137-14133-00	•SPRING, throttle stop	1	
23	1W3-14123-00	•SCREW, air adjusting	1	
24	3R4-14158-00	•TOP, mixing chamber	1	
25	2A0-14122-00	•SCREW, throttle	1	
26	802-14161-00	•NUT, cable adjusting	1	

www.legends-yamaha-enduros.com

B6

P.N 81006  
 Jan 81

FIG. 5 CARBURETOR



REF. NO.	PART NO.	DESCRIPTION	Q'TY	REMARKS
27	2X8-14112- <del>20</del>	•VALVE, throttle 1	1	
28	509-14274-00	•CONNECTOR	1	
29	3R4-14146-00	•PLATE	1	
30	2X8-14153-00	•WASHER, main Jet	1	
31	510-14115-00	•PLUG, screw	1	
32	558-14147-00	•O-RING	1	
33	239-14116- <del>38</del>	•NEEDLE	1	
34	164-14137-00	•CLIP	1	
35	509-14136-00	•SEAT, sPring	1	
36	1W1-14171-00	•PLUNGER, starter	1	
37	256-14135-00	•SPRING, PlunGer	1	
38	802-14174-00	•CAP, PlunGer	1	
39	737-14241-00	•BUSH	1	
40	737-14137-00	•CLIP	1	
41	2X7-14173-00	•COVER, PlunGer caP	1	
42	1W3-14178-00	•PLATE, starter sPring	1	
43	1W3-14175-00	•LEVER, starter 1	1	



B7

P/N 5106  
Jan '81

FIG. 6 EXHAUST

REF. NO.	PART NO.	DESCRIPTION	Q'TY	REMARKS
1	4V6-14610-00	EXHAUST PIPE ASSY 1	1	
2	3R4-14613-00	GASKET, exhaust Pipe	1	
3	90507-20030	SPRING, tension	3	
4	3R4-14781-02	STAY, muffler 2	1	
5	92901-08200	WASHER, Plain	1	
6	97301-08016	BOLT	2	
7	92901-08100	WASHER, sPrinG	2	
8	92901-08600	WASHER, Plate	2	
9	1M1-14714-00	GASKET, muffler	1	
10	90460-43053	CLAMP, hose	2	
11	4V5-14753-00	SILENCER, exhaust	1	
12	4V5-14752-00	PIPE, outlet	1	
13	92501-06012	SCREW, Pan head	1	
14	92901-06100	WASHER, sPrinG	1	
15	92901-06600	WASHER, Plate	1	
16	565-14747-00	DAMPER, muffler	1	
17	90387-08258	COLLAR	1	
18	90201-08114	WASHER, Plate	2	
19	90109-08512	BOLT	1	
20	565-14771-00	STAY, muffler 1	1	
21	97301-06016	BOLT	1	
22	92901-06100	WASHER, sPrinG	1	
23	92901-06600	WASHER, Plate	1	
24	90109-06551	BOLT	1	
25	92501-06008	SCREW	1	
26	90202-06010	WASHER, plain	1	

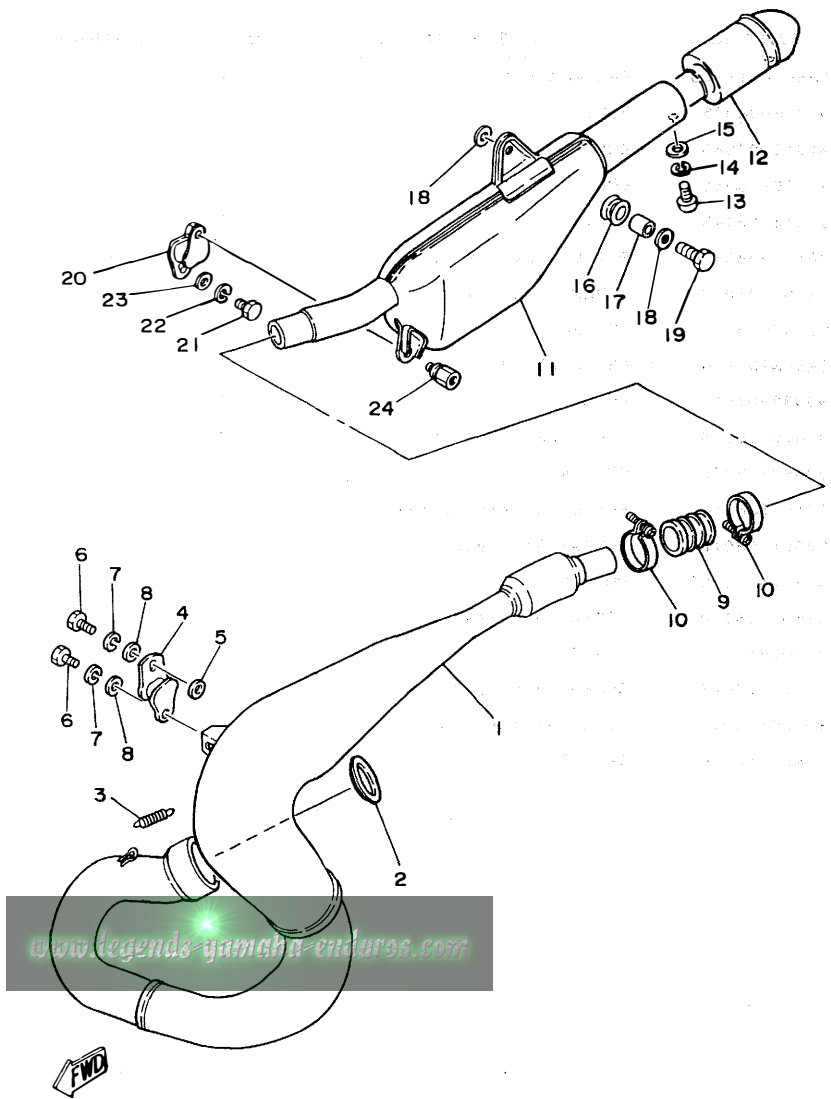
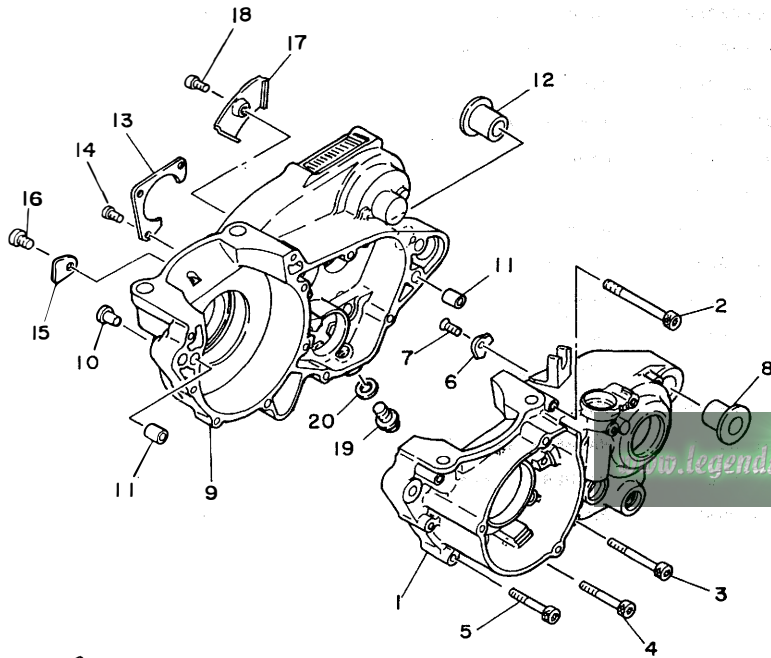
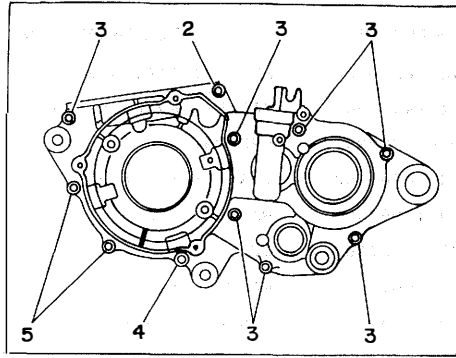


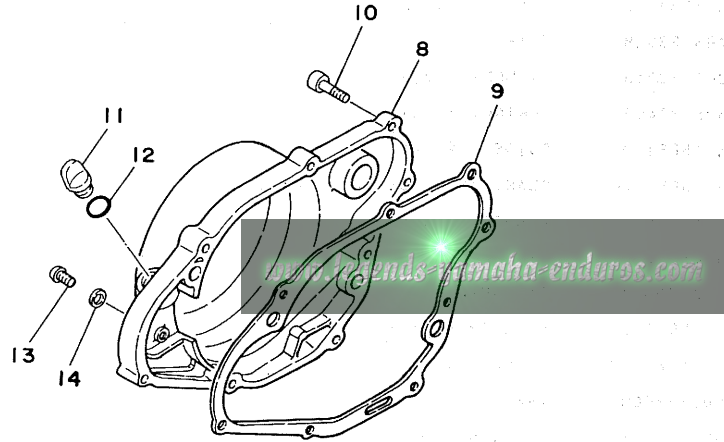
FIG. 7 CRANKCASE



REF. NO.	PART NO.	DESCRIPTION	Q'TY	REMARKS
1	3R5-15111-00	CRANKCASE 1	1	
2	91316-06075	BOLT	1	
3	91316-06060	BOLT	7	
4	91316-06050	BOLT	1	
5	91316-06045	BOLT	2	
6	3R4-15383-00	PLATE, bearing cover	1	
7	92701-06012	SCREW, flat head	1	
8	90387-16776	COLLAR	1	
9	3R5-W1512-00	CRANKCASE 2	1	
10	90338-07011	PLUG	1	
11	91810-05016	PIN, dowel	4	
12	90387-16776	COLLAR	1	
13	3R4-15381-00	PLATE, bearing cover	1	
14	92501-06012	SCREW, Pan head	3	
15	4V4-15118-00	HOLDER	1	
16	92501-06010	SCREW, Pan head	1	
17	3R4-15113-00	PLATE	1	
18	92501-06012	SCREW, Pan head	1	
19	90340-12059	PLUG, straight screw	1	
20	90430-12038	GASKET	1	



FIG. 8 CRANKCASE COVER



REF. NO.	PART NO.	DESCRIPTION	Q'TY	REMARKS
1	3R5-15411-00	COVER, crankcase 1	1	
2	4V4-15451-00	GASKET, crankcase cover	1	
3	92506-06035	SCREW, Pan head	3	
4	3R4-15421-00	COVER, crankcase 2	1	
5	92506-06025	SCREW, Pan head	1	
6	92906-06100	WASHER, sPring	1	
7	92906-06600	WASHER, Plate	1	
8	3R4-15431-01	COVER, crankcase 3	1	
9	3R4-15462-00	GASKET, crankcase cover 3	1	
10	91316-06025	BOLT	8	
11	1G8-15362-00	PLUG, oil level	1	
12	93210-14104	O-RING	1	
13	92506-06008	SCREW, Pan head	1	
14	90430-06016	GASKET	1	

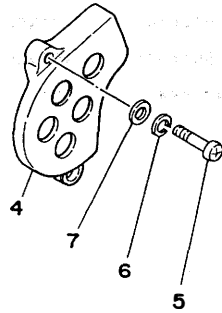
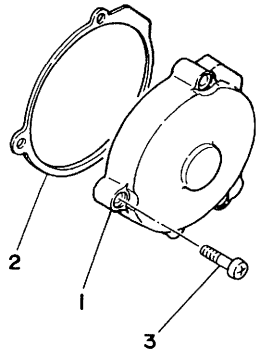
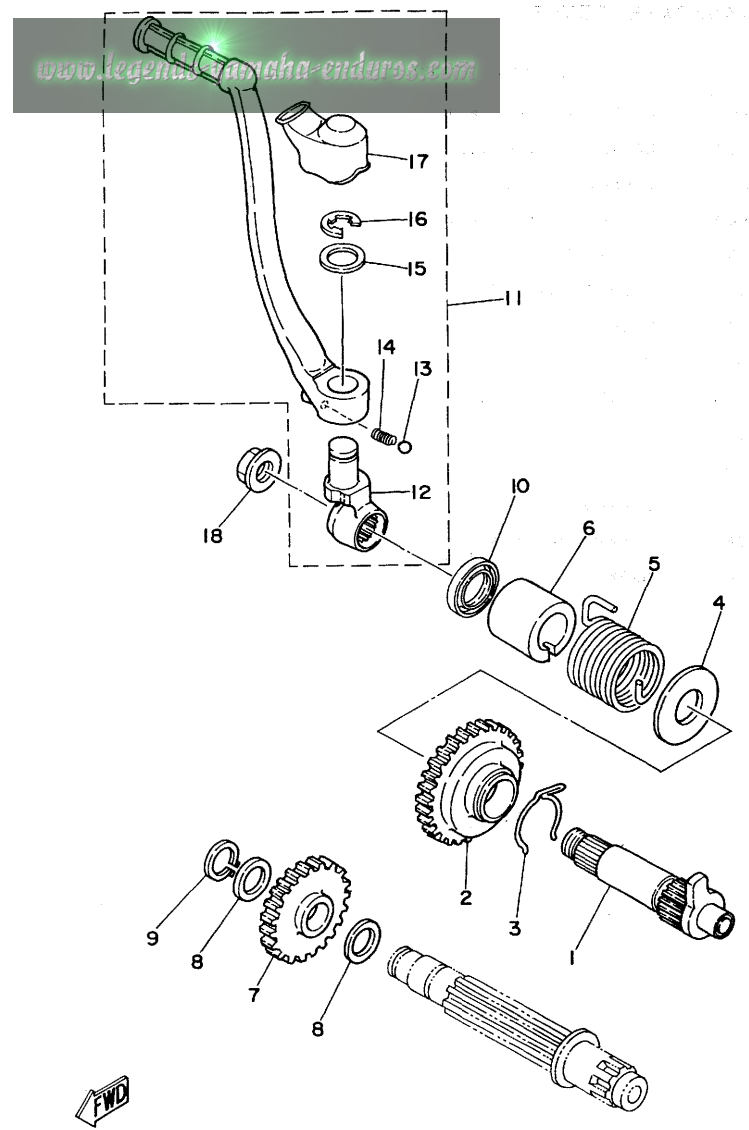


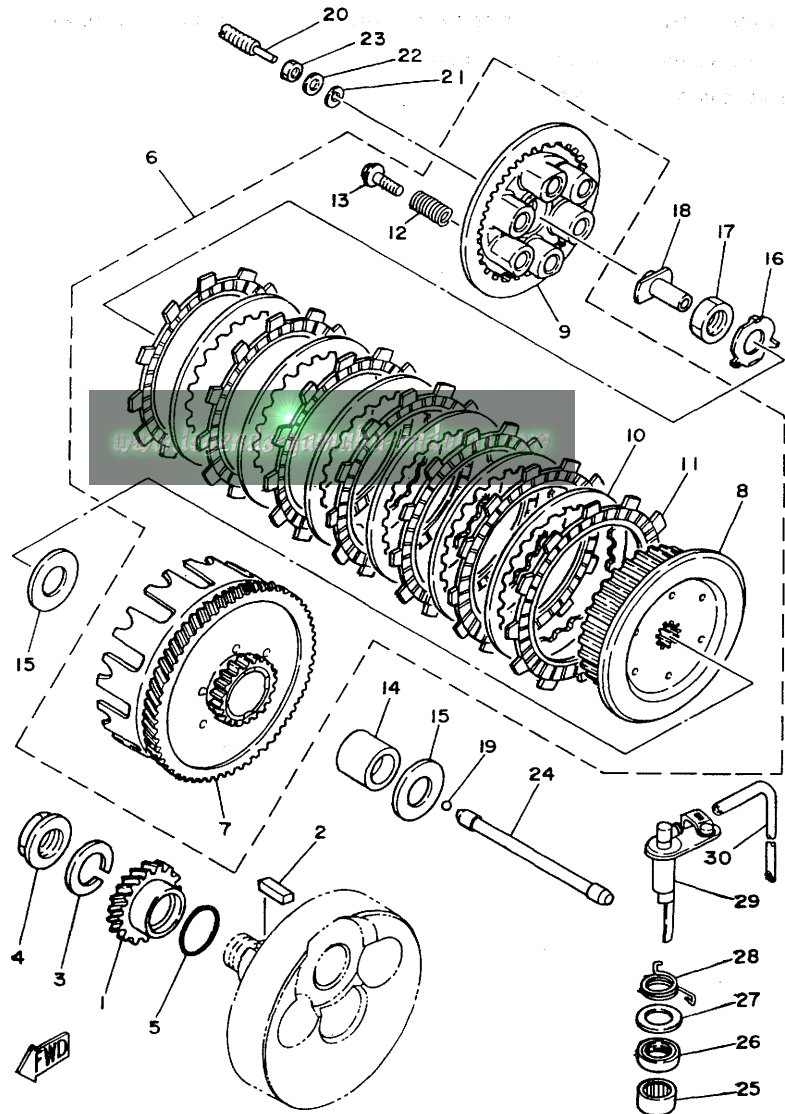
FIG. 9 KICK STARTER

REF. NO.	PART NO.	DESCRIPTION	Q'TY	REMARKS
1	3R4-15660-00	KICK AXLE ASSY	1	
2	3R4-15641-00	GEAR, kick (26T)	1	
3	90468-26048	CLIP	1	
4	90201-20358	WASHER, Plate	1	
5	90508-30422	SPRING, torsion	1	
6	3R4-15664-00	GUIDE, sPring	1	
7	3R4-15651-00	GEAR, sProcket idle (21T)	1	
8	90201-17545	WASHER, Plate	2	
9	93410-17008	CIRCLIP	1	
10	93109-20014	OIL SEAL	1	
11	4V3-15620-00	KICK CRANK ASSY	1	
12	4V3-15621-00	•BOSS, kick crank	1	
13	93507-32009	•BALL	1	
14	90501-12081	•SPRING, comPression	1	
15	90201-15234	•WASHER, Plate	1	
16	93430-10016	•CIRCLIP	1	
17	2K7-15618-00	•COVER, kick lever	1	
18	90179-12244	NUT	1	



**B11**

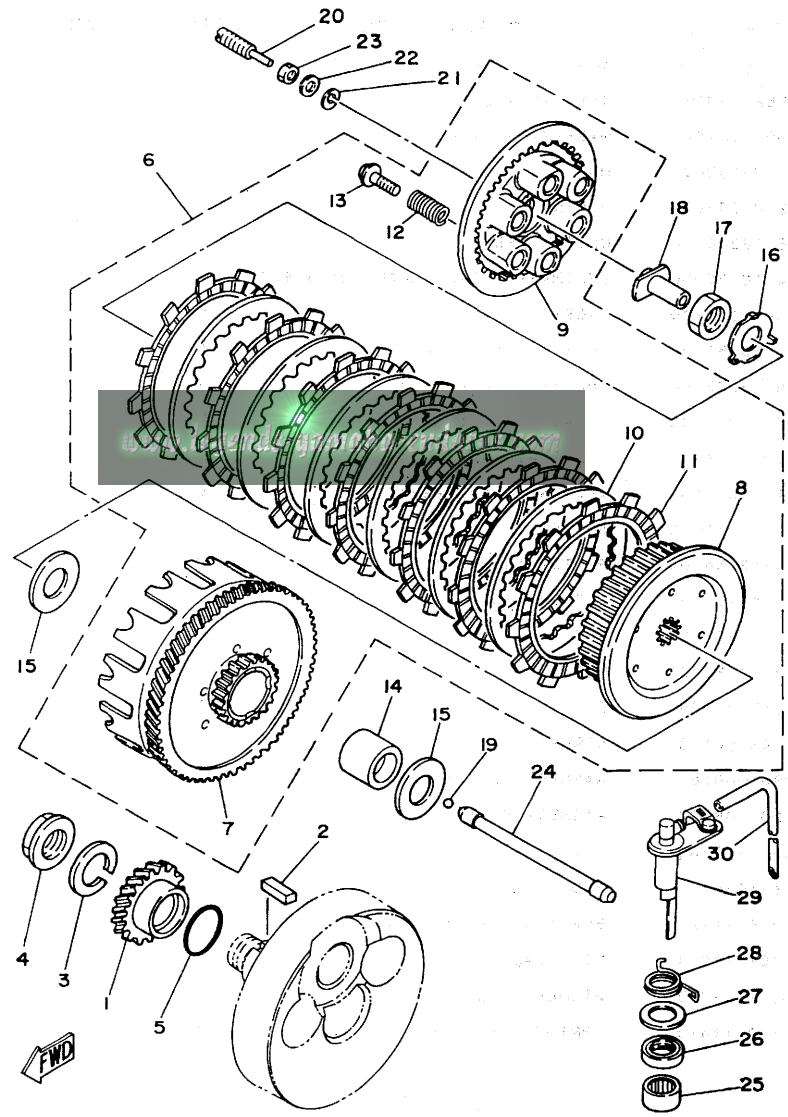
FIG. 10 CLUTCH



REF. NO.	PART NO.	DESCRIPTION	Q'TY	REMARKS
1	3R5-16111-00	GEAR, Primary drive (24T)	1	
2	90282-07019	KEY, straight	1	
3	92901-18100	WASHER, spring	1	
4	90170-18089	NUT	1	
5	93210-29282	O-RING	1	
6	3R5-16300-00	CLUTCH ASSY	1	
7	3R4-16150-00	•PRIMARY DRIVEN GEAR COMP.(63T)	1	
8	3R4-16371-00	•BOSS, clutch	1	
9	1M1-16351-00	•PLATE, Pressure 1	1	
10	168-16325-00	•PLATE, clutch 2	6	
11	383-16321-00	•PLATE, friction	7	
12	90501-24408	•SPRING, compression	6	
13	90159-06016	•SCREW, with washer	6	
14	2K7-16181-00	SPACER 1	1	
15	2K7-16154-00	PLATE, thrust 1	2	
16	90215-20125	WASHER, lock	1	
17	90170-20255	NUT	1	
18	3R4-16356-00	ROD, Push 1	1	
19	93515-32029	BALL	1	
20	90149-08143	SCREW	1	
21	92901-08100	WASHER, spring	1	
22	90201-08092	WASHER, Plate	1	
23	95311-08700	NUT	1	
24	3R5-16357-00	ROD, Push 2	1	
25	93315-21721	BEARING, cylindrical	1	
26	93102-17004	OIL SEAL	1	
27	90201-17327	WASHER, Plate	1	
28	90508-14423	SPRING, torsion	1	
29				
30				

P.N. 21006  
*from 8'*

FIG. 10 CLUTCH



REF. NO.	PART NO.	DESCRIPTION	Q'TY	REMARKS
29	4V4-16380- <del>80</del> <sup>81</sup>	PUSH LEVER ASSY	1	
30	90445- <del>08577</del> <sup>09270</sup>	HOSE	1	

**B13**



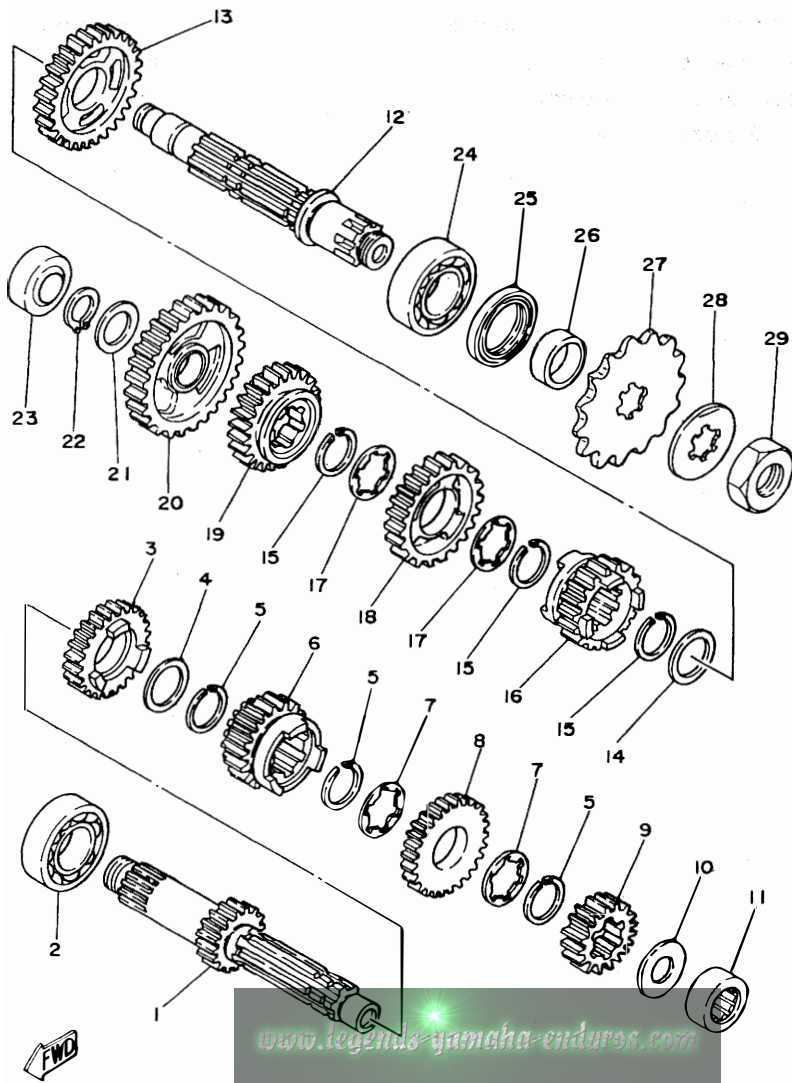
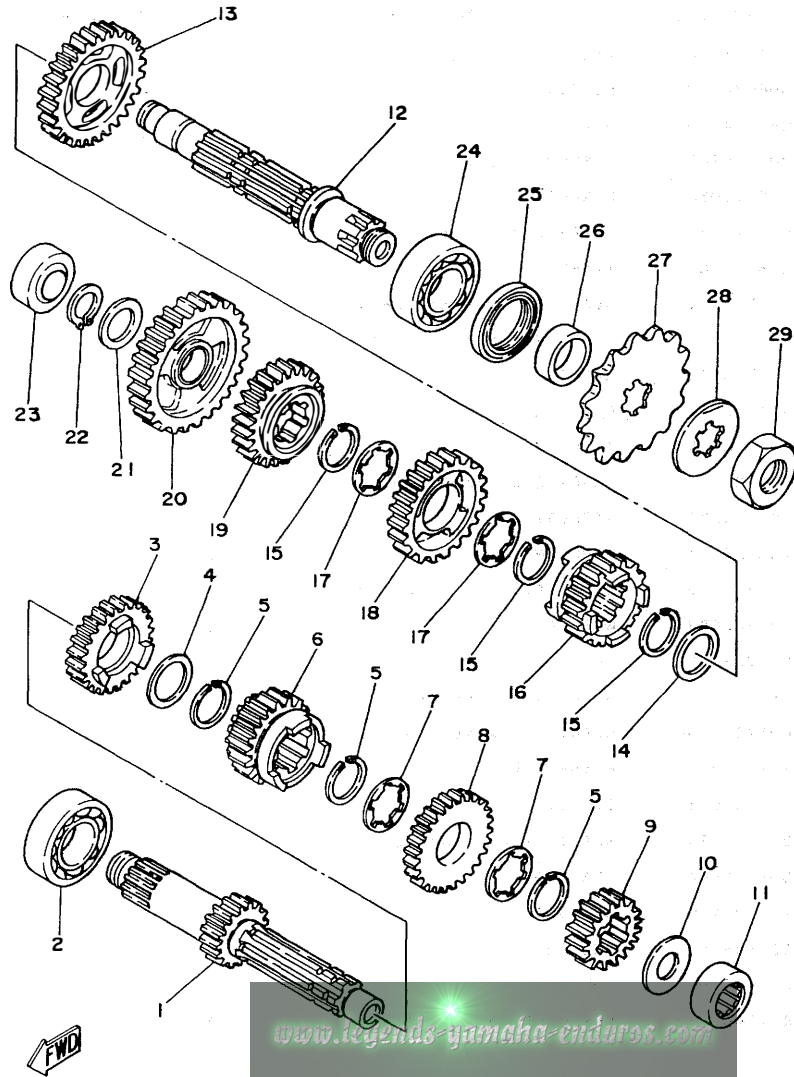


FIG. 11 TRANSMISSION

REF. NO.	PART NO.	DESCRIPTION	Q'TY	REMARKS
1	4V6-17411-00	AXLE, main (12T)	1	
2	93306-20540	BEARING	1	
3	4V6-17141-00	GEAR, 4th Pinion (22T)	1	
4	90201-25287	WASHER, Plate	1	
5	93440-25084	CIRCLIP	3	
6	3R5-17131-01	GEAR, 3rd Pinion (19T)	1	
7	90209-22082	WASHER	2	
8	4V6-17151-00	GEAR, 5th Pinion (28T)	1	
9	3R5-17121-01	GEAR, 2nd Pinion (16T)	1	
10	90209-20213	WASHER	1	
11	93311-62035	BEARING, cylindrical	1	
12	3R5-17421-00	AXLE, drive	1	
13	4V6-17221-00	GEAR, 2nd wheel (28T)	1	
14	90201-25287	WASHER, Plate	1	
15	93440-25084	CIRCLIP	3	
16	4V6-17251-00	GEAR, 5th wheel (22T)	1	
17	90209-22082	WASHER	2	
18	3R5-17231-02	GEAR, 3rd wheel (25T)	1	
19	4V6-17241-00	GEAR, 4th wheel (22T)	1	
20	4V6-17211-00	GEAR, 1st wheel (32T)	1	
21	90201-20278	WASHER, Plate	1	
22	93410-20038	CIRCLIP	1	
23	93311-62035	BEARING, cylindrical	1	
24	93306-20544	BEARING	1	
25	93102-32136	OIL SEAL	1	
26	90387-25663	COLLAR	1	
27	1W4-17461-40	SPROCKET, drive (14T)	1	UR STD
	1W4-17461-30	SPROCKET, drive (13T)	1	AP

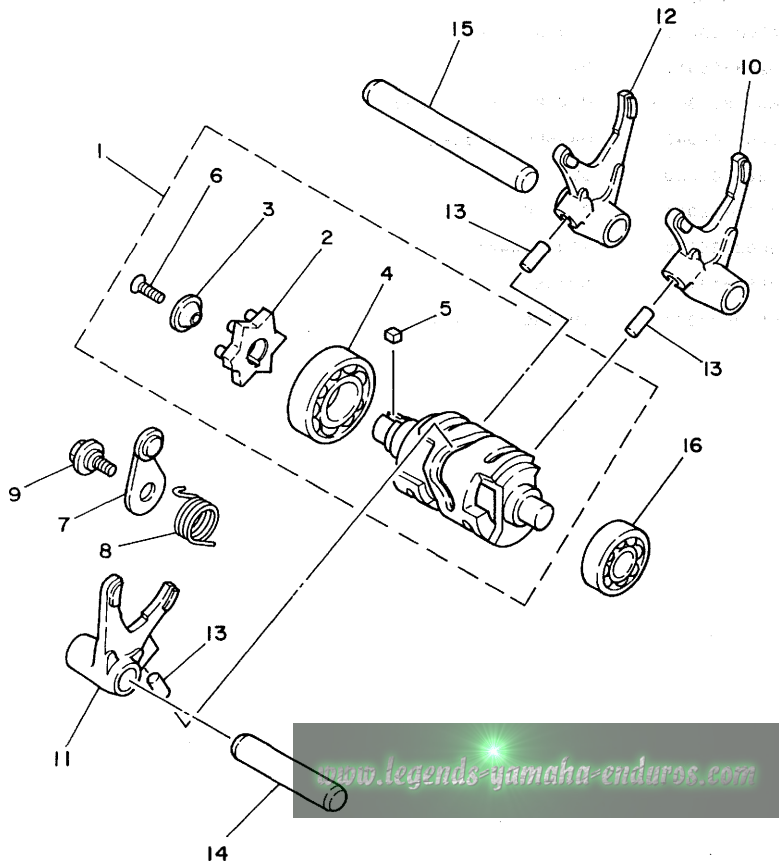
FIG. 11 TRANSMISSION



REF. NO.	PART NO.	DESCRIPTION	Q'TY	REMARKS
27	1W4-17461-50	SPROCKET, drive (15T)	1	AP
28	90215-21121	WASHER, lock	1	
29	90179-20255	NUT	1	

P.N. 2106  
Jan '81

FIG. 12 SHIFT CAM·FORK

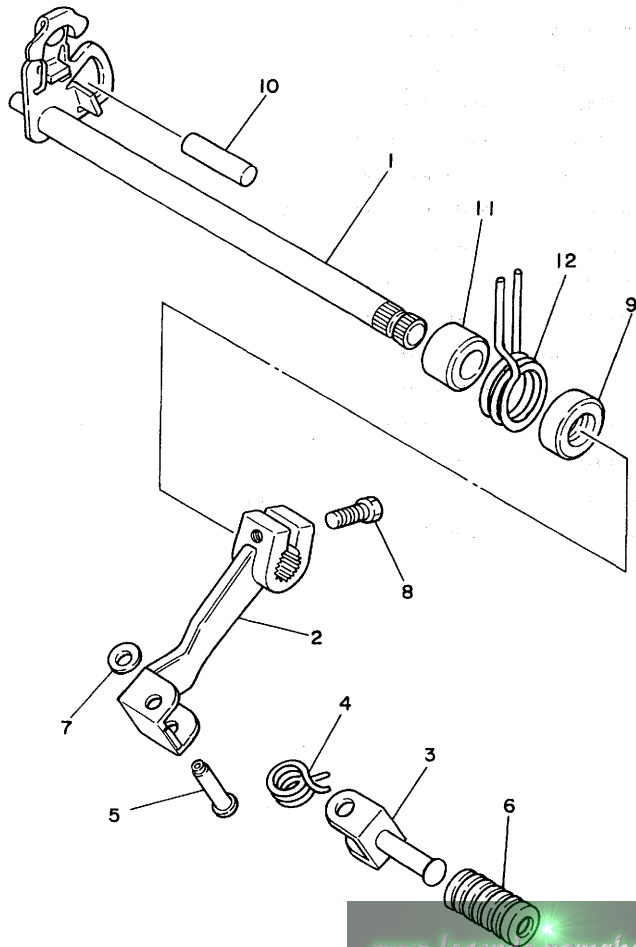


REF. NO.	PART NO.	DESCRIPTION	Q'TY	REMARKS
1	3R5-18540-03	SHIFT CAM ASSY	1	
2	3R4-18185-00	•SEGMENT	1	
3	3R4-18561-00	•PLATE, side 1	1	
4	93306-00422	•BEARING	1	
5	90282-04036	•KEY, straight	1	
6	98701-05016	•SCREW, flat head	1	
7	3R4-18140-00	STOPPER LEVER ASSY	1	
8	90508-26421	SPRING, torsion	1	
9	1W1-18177-00	BOLT, stopPer	1	
10	3R5-18511-00	FORK, shift 1	1	
11	3R5-18512-00	FORK, shift 2	1	
12	3R5-18513-00	FORK, shift 3	1	
13	93606-14154	PIN, dowel	3	
14	4V4-18531-00	BAR, shift fork Guide 1	1	
15	4V4-18535-00	BAR, shift fork Guide 2	1	
16	93306-20107	BEARING (B6201)	1	



P.N. 81506  
Jan '81

FIG. 13 SHIFT SHAFT PEDAL



REF. NO.	PART NO.	DESCRIPTION	Q'TY	REMARKS
1	3R4-18101- <del>02</del>	SHIFT SHAFT ASSY	1	
2	4V4-18111-04	PEDAL, shift	1	
3	3R8-18162-00	PEDAL, shift	1	
4	90508-20415	SPRING, torsion	1	
5	90243-0801 <del>4</del>	PIN	1	
6	1W6-18113-00	COVER, shift Pedal	1	
7	90201-06042	WASHER, Plate	1	
8	97321-06020	BOLT	1	
9	93101-12004	OIL SEAL	1	
10	93608-25150	PIN, dowel	1	
11	90560-12171	SPACER	1	
12	90508-32374	SPRING, torsion	1	

www.legend-yamaha-enduros.com



FIG. 14 FRAME

REF. NO.	PART NO.	DESCRIPTION	Q'TY	REMARKS
1	4V5-21110-00-33	FRAME COMP	1	yamaha black
2	3R4-21415-00	BRACKET, front upper 1	2	
3	95811-08080	BOLT, flange	2	
4	4V4-21425-00	BRACKET, rear upper 1	1	
5	97321-08025	BOLT	2	
6	92901-08100	WASHER, spring	2	
7	92901-08600	WASHER, Plate	2	
8	95811-08075	BOLT, flange	1	
9	95811-10055	BOLT, flange	1	
10	92901-10200	WASHER, Plain	3	
11	95601-10100	NUT, u	1	
12	95811-08170	BOLT, flange	1	
13	92901-08200	WASHER, Plain	4	
14	90185-08054	NUT, self-locking	4	
15	2K7-2148A-00	SHAFT	2	
16	4V4-22178-00	TENSIONER	2	
17	4V4-22184-00	BUSH	2	
18	90201-13202	WASHER, Plate	2	
19	90201-08113	WASHER, Plate	2	
20	97301-08055	BOLT	2	
21	95702-08300	NUT, nylon	2	
22	90201-08638	WASHER, Plate	2	
23	3R4-2139W-00	COVER	1	
24	4V5-2147A-00-33	GUARD, engine 1	1	yamaha black
25	4V5-2147E-00-33	GUARD, engine 2	1	yamaha black
26	2J5-21732-00	SEAL 1	2	
27	431-24181-00	DAMPER, locating 1	2	

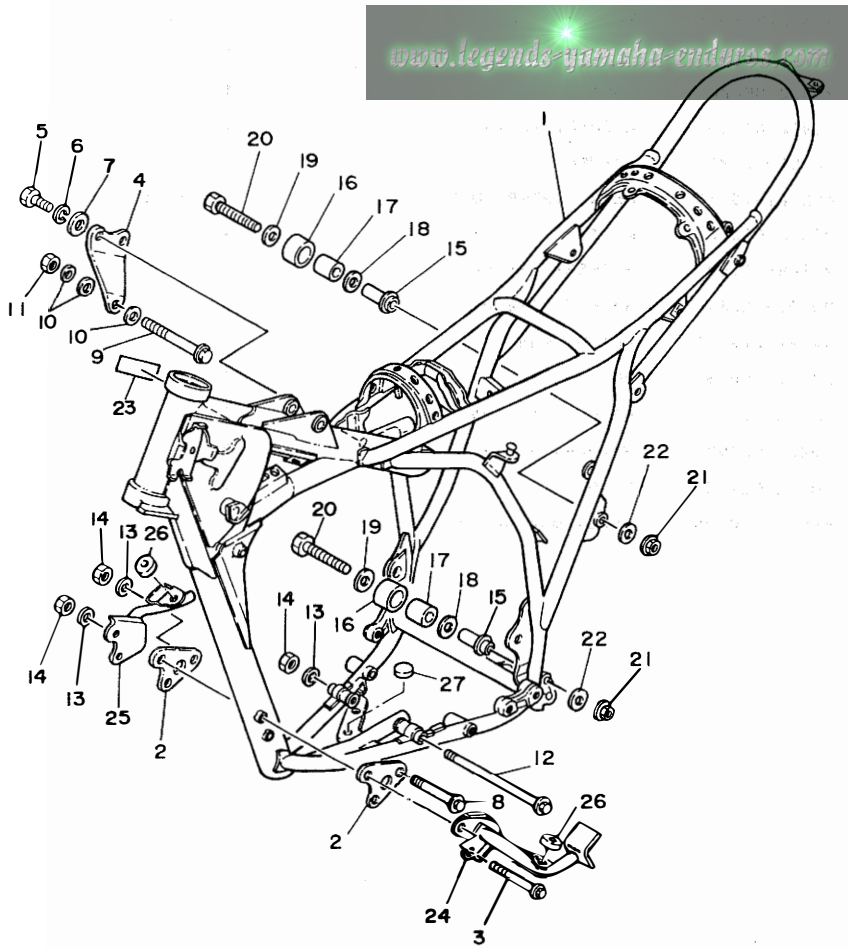
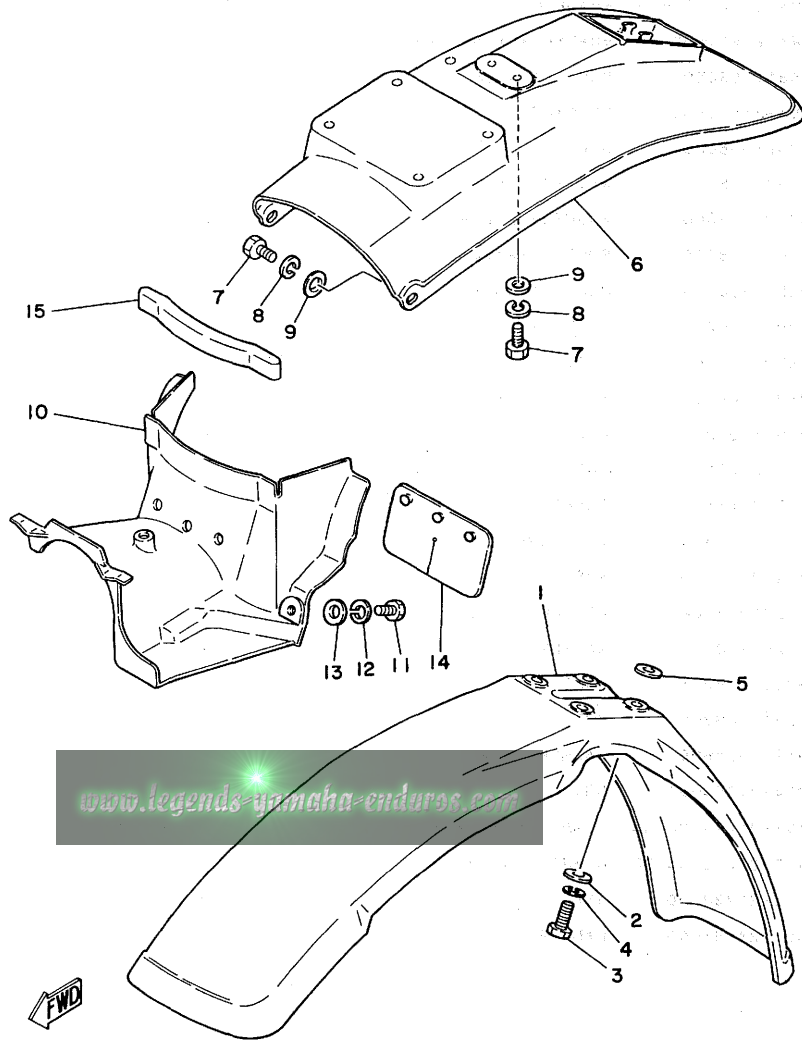


FIG. 15 FRONT FENDER•REAR FENDER

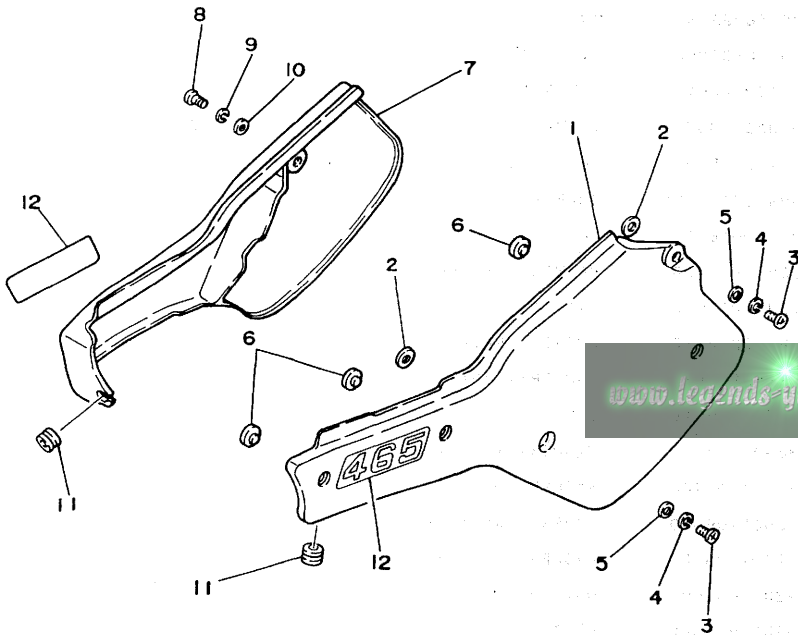


REF. NO.	PART NO.	DESCRIPTION	Q'TY	REMARKS
1	3R8-21511-11	FENDER, front	1	sky blue
2	90201-06067	WASHER, Plate	4	
3	97302-06020	BOLT	4	
4	92902-06100	WASHER, sPring	4	
5	90209-06187	WASHER	4	
6	4V5-21610-10	REAR FENDER COMP.	1	sky blue
7	97306-06016	BOLT	4	
8	92906-06100	WASHER, sPring	4	
9	90201-06067	WASHER, Plate	4	
10	4V5-21629-00	GUARD, mud	1	
11	97301-06015	BOLT	2	
12	92902-06100	WASHER, sPring	2	
13	90201-06067	WASHER, Plate	2	
14	1M1-21621-00	FLAP	1	
15	565-21746-00	SEAL, mud guard	1	

[www.legends-yamaha-enduros.com](http://www.legends-yamaha-enduros.com)

FIG. 16 SIDE COVER

REF. NO.	PART NO.	DESCRIPTION	Q'TY	REMARKS
1	4V5-21711-10-26	COVER, side (L.H)	1	comPetition ye- llow /sky blue
2	92902-08200	WASHER	2	
3	92501-06015	SCREW, Pan head	2	
4	92901-06100	WASHER, sPring	2	
5	90201-06571	WASHER, Plate	2	
6	431-24181-00	DAMPER, locating	3	
7	4V5-21721-10-26	COVER, side (R.H)	1	comPetition ye- llow /sky blue
8	92501-06015	SCREW, Pan head	1	
9	92901-06100	WASHER, sPring	1	
10	90201-06571	WASHER, Plate	1	
11	90480-12053	GROMMET	2	
12	4V6-21737-00	EMBLEM	2	



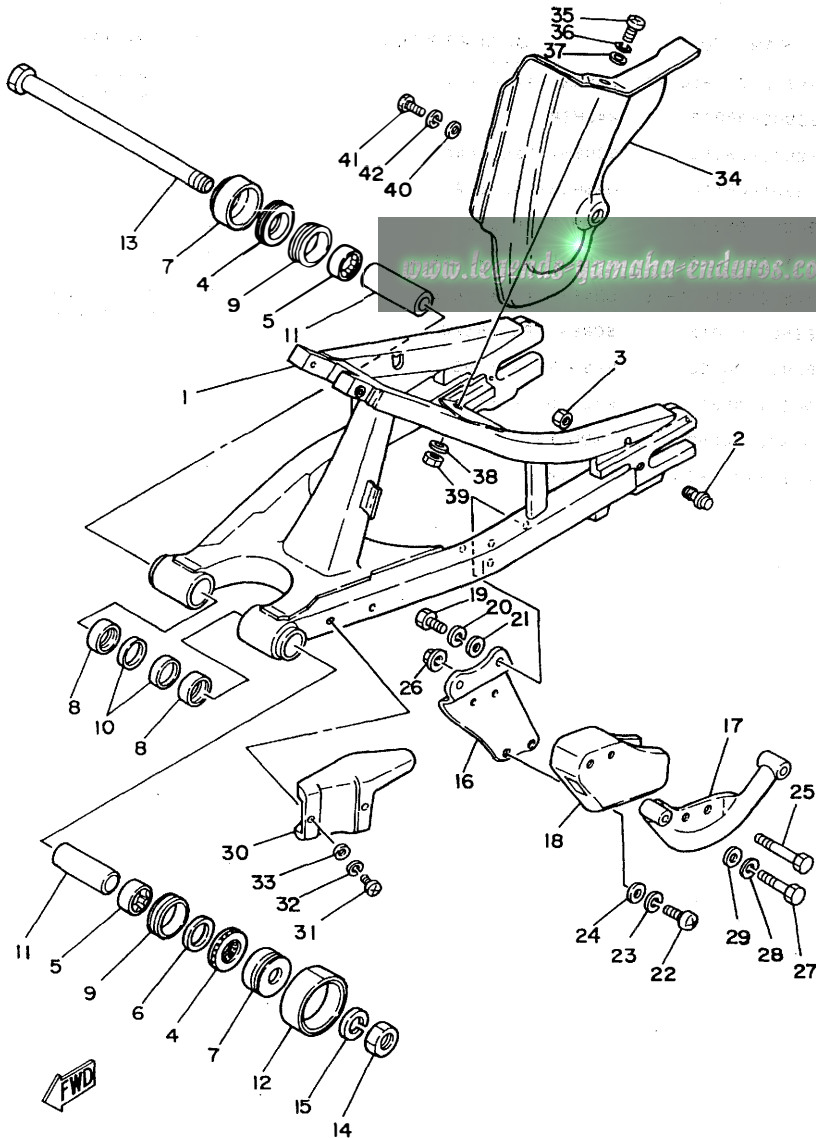
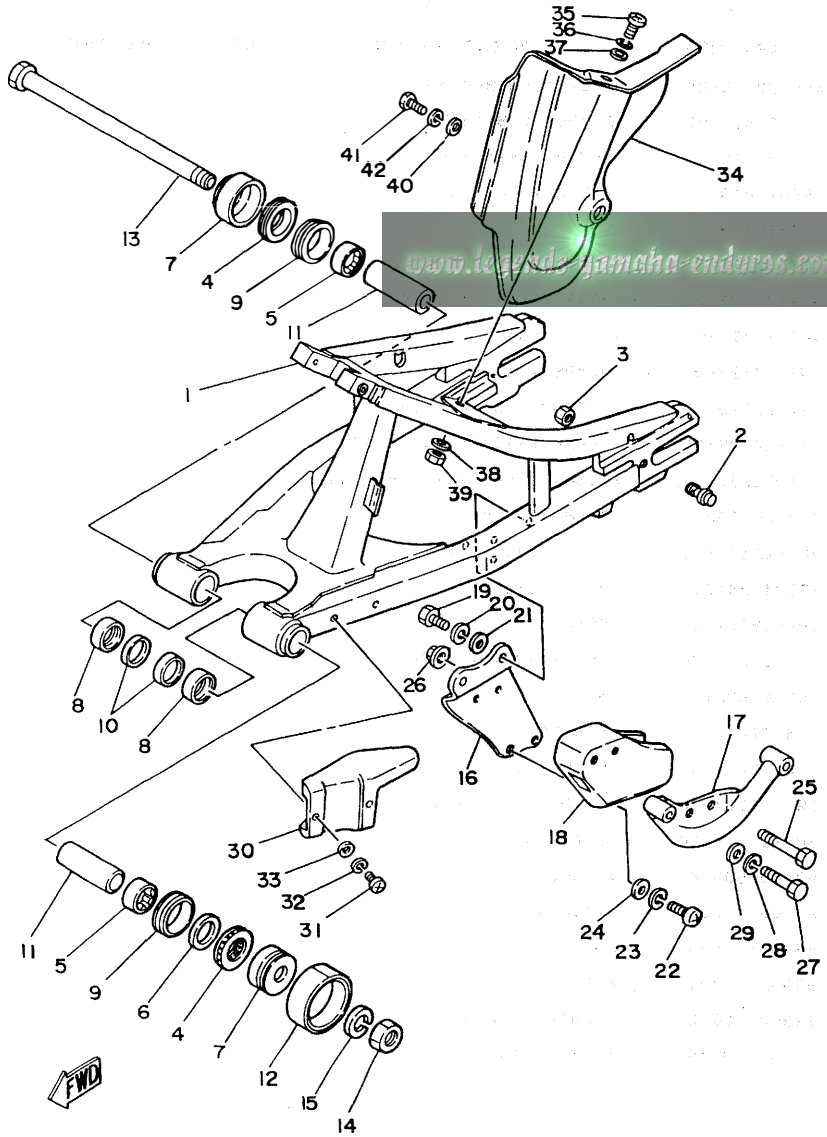


FIG. 17 REAR ARM

REF. NO.	PART NO.	DESCRIPTION	Q'TY	REMARKS
1	4V6-22110-00-35	REAR ARM COMP.	1	silver
2	90109-08599	BOLT	2	
3	90179-08278	NUT	2	
4	93342-22208	BEARING	2	
5	93317-22214	BEARING, cylindrical	2	
6	648-45533-00-03	SHIM (0.3T)	1	UN
7	3R4-22129-00	COVER, thrust 2	2	
8	90386-22097	BUSH	2	
9	93108-35004	OIL SEAL	2	
10	93109-22018	OIL SEAL	2	
11	90380-16077	BUSH, solid	2	
12	431-22151-03	SEAL, Guard	1	
13	3R4-22141-00	SHAFT, Pivot	1	
14	90170-16111	NUT	1	
15	92901-16100	WASHER, sPring	1	
16	2X4-22179-00	ARM, tensioner	1	
17	3R5-22153-00	GUARD, chain	1	
18	2X4-22199-00	SUPPORT, chain	1	
19	97301-08016	BOLT	2	
20	92901-08100	WASHER, sPring	2	
21	92901-08600	WASHER, Plate	2	
22	92501-06020	SCREW, Pan head	2	
23	92901-06100	WASHER, sPring	2	
24	92901-06600	WASHER, Plate	2	
25	97301-06050	BOLT	2	
26	95702-06300	NUT, nylon	2	
27	97301-08035	BOLT	2	
28	92901-08100	WASHER, sPring	2	



FIG. 17 REAR ARM



REF. NO.	PART NO.	DESCRIPTION	Q'TY	REMARKS
29	92901-08600	WASHER, Plate	2	
30	3R4-22147-00	PROTECTOR, chain	1	
31	98501-05010	SCREW, Pan head	2	
32	92901-05100	WASHER, sPring	2	
33	92901-05200	WASHER, Plain	2	
34	4V5-22311-00	CASE, chain	1	black
35	92501-06020	SCREW, Pan head	1	
36	92901-06100	WASHER, sPring	1	
37	92901-06600	WASHER, Plate	1	
38	90201-06067	WASHER, Plate	1	
39	95601-06100	NUT, u	1	
40	90201-06067	WASHER, Plate	1	
41	97301-06020	BOLT	1	
42	92901-06100	WASHER, sPring	1	

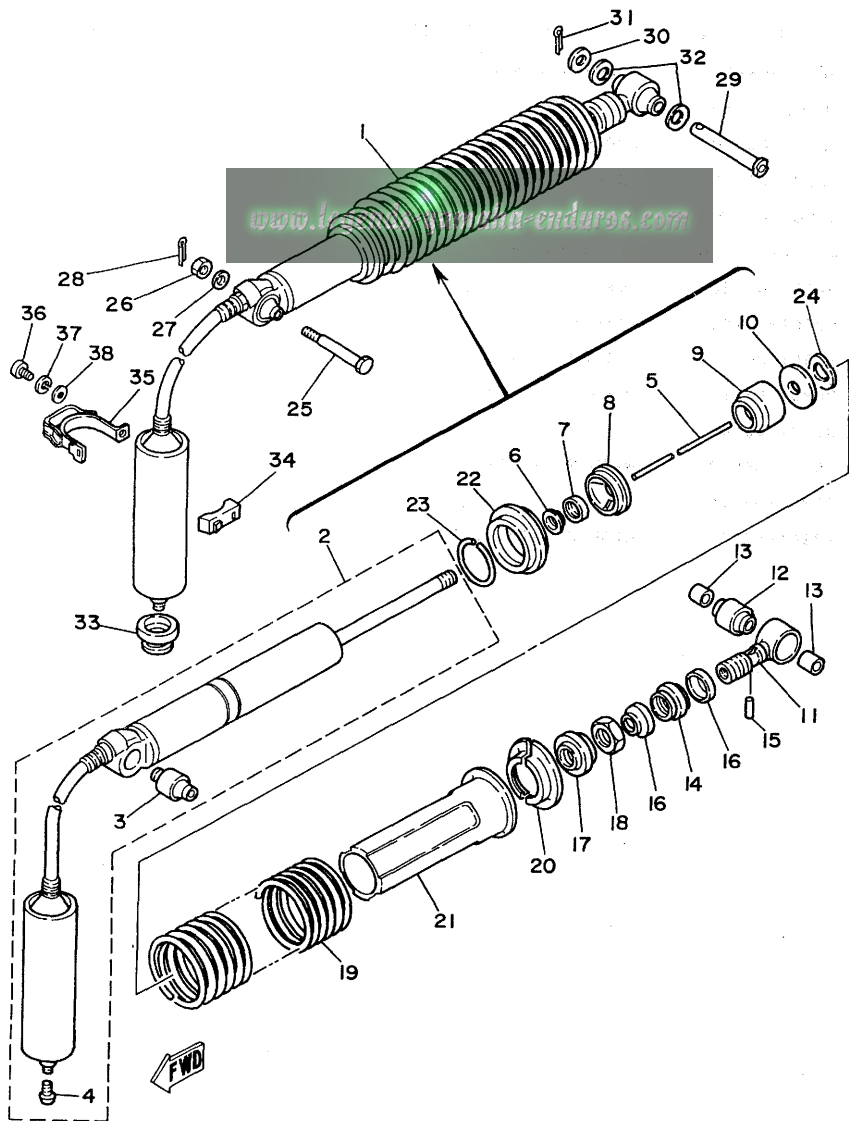
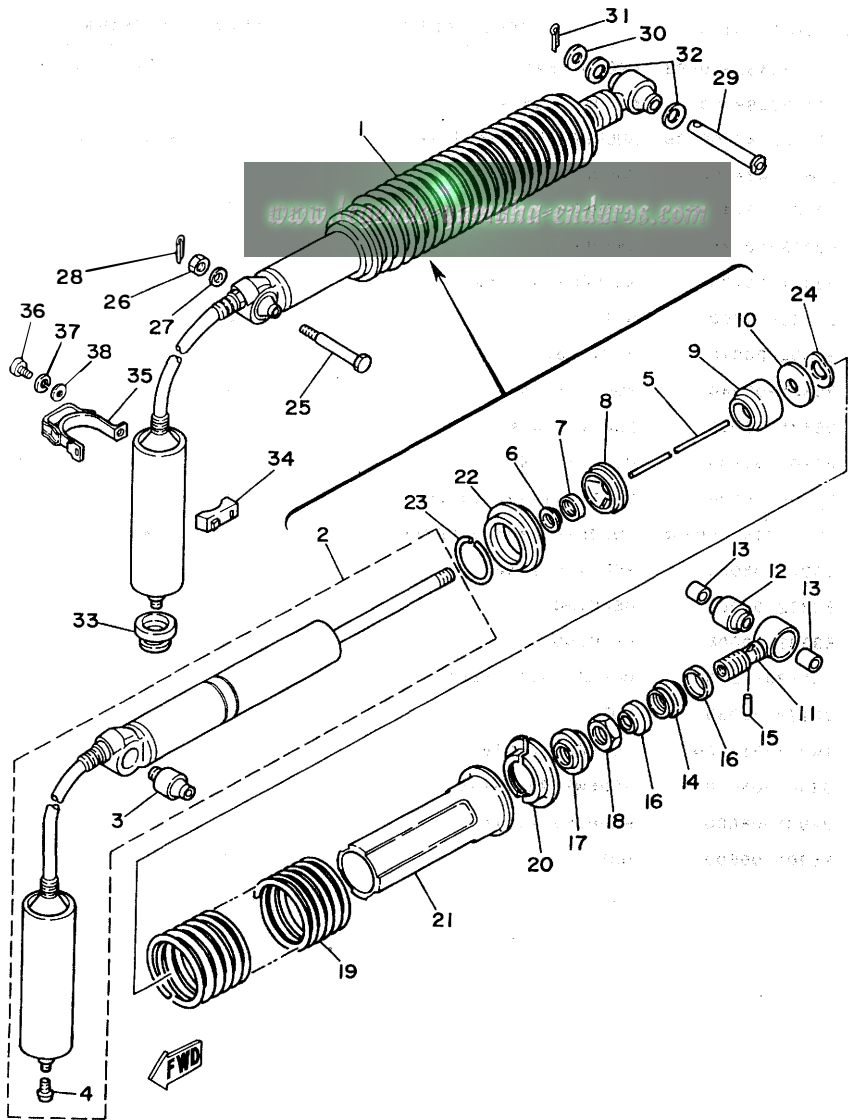


FIG. 18 REAR SUSPENSION

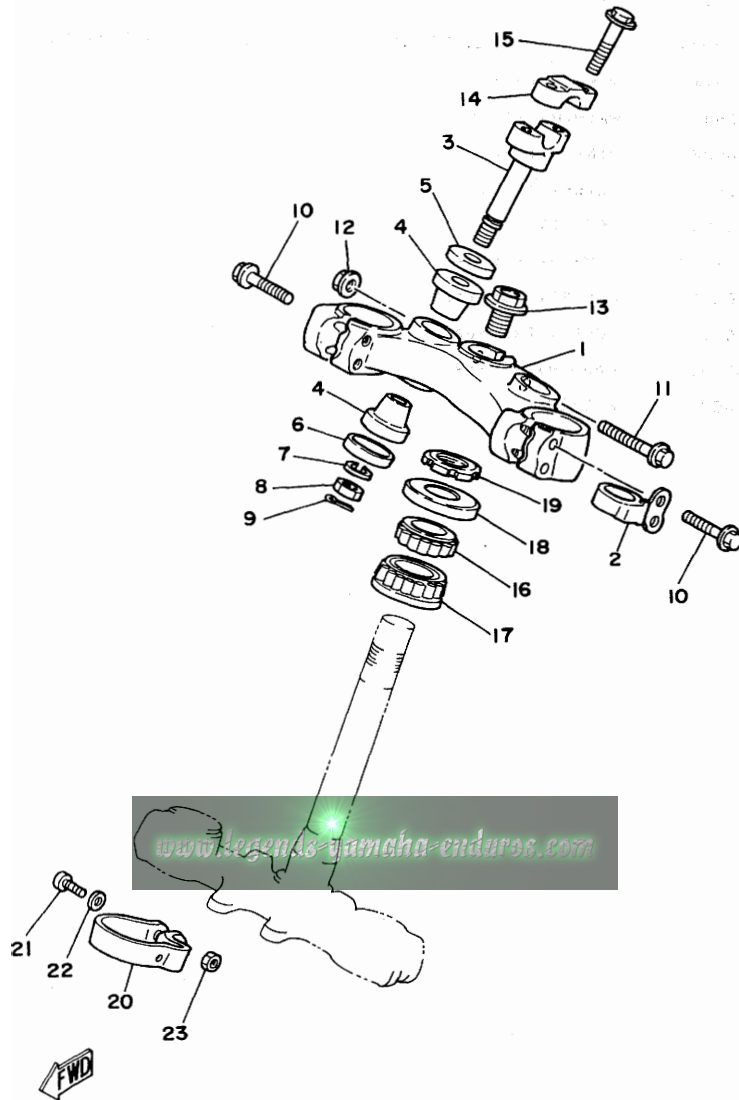
REF. NO.	PART NO.	DESCRIPTION	Q'TY	REMARKS
1	4V6-22210-00	SHOCK ABSORBER ASSY, rear	1	
2	4V6-22401-00	•DUMPER SUB ASSY	1	
3	1W1-22216-00	••BUSH, rear shock absorber	1	
4	98501-04005	••SCREW, Pan head	1	
5	3R4-22489-00	•ROD, Push	1	
6	3R4-22475-00	•SEAL, dust	1	
7	3R4-22473-00	•HOUSING, seal ring	1	
8	4L0-22472-00	•CAP, case	1	
9	2W6-22493-00	•BUMPER, stop	1	
10	3R4-22228-00	•SUPPORT, bump stop	1	
11	3R4-22409-00	•UPPER BRACKET SUB ASSY	1	
12	3R4-22226-00	•BUSH, shock absorber lower	1	
13	90380-12051	•BUSH, solid	2	
14	3R4-22497-00	•NUT, adjusting	1	
15	93604-26132	•PIN, dowel	1	
16	3R4-22221-01	•COVER	2	
17	3R4-22213-00	•SEAT, spring upper	1	
18	90170-20213	•NUT	1	
19	4V6-22212-00	•SPRING	1	(yellow/pink)
20	3R4-22214-00	•GUIDE, spring 1	2	
21	3R4-22224-00	•GUIDE, spring 2	1	
22	3R4-22223-00	•SEAT, spring lower	1	
23	93440-50078	•CIRCLIP	1	
24	90206-14067	•WASHER, wave	1	
25	90109-10550	BOLT	1	
26	95302-10700	NUT	1	
27	92902-10600	WASHER, Plate	1	
28	91401-20025	PIN, cotter	1	

FIG. 18 REAR SUSPENSION



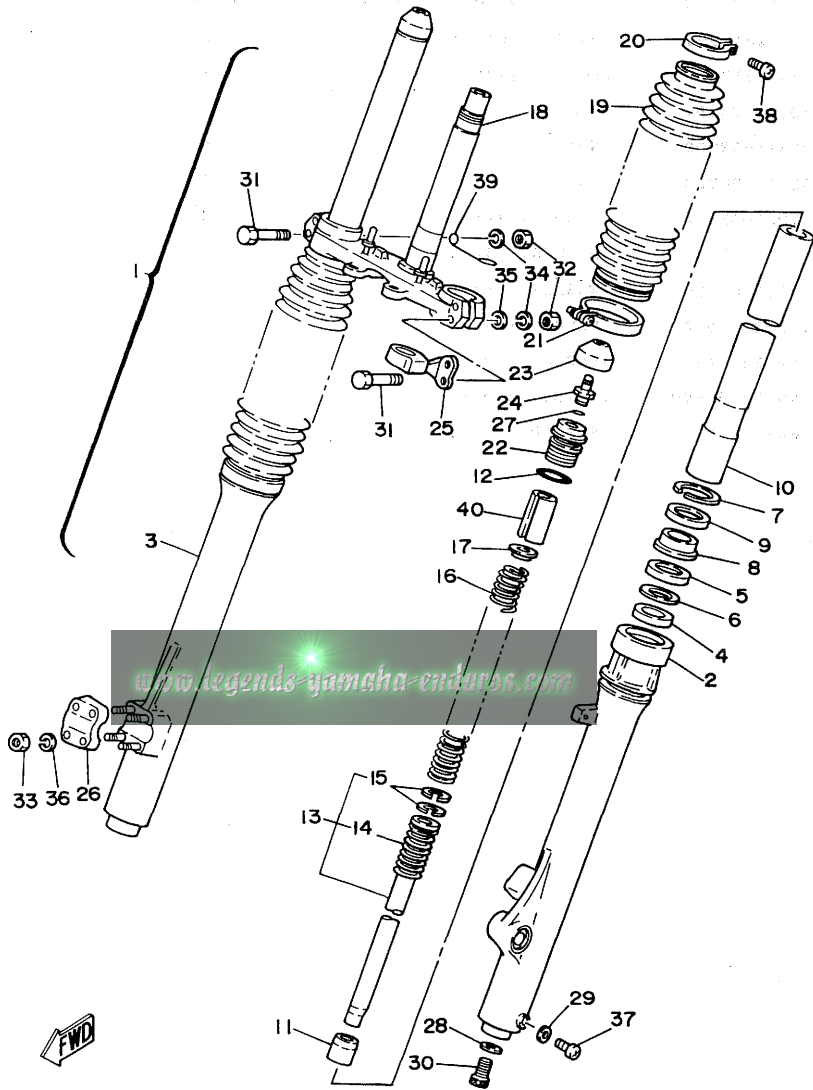
REF. NO.	PART NO.	DESCRIPTION	Q'TY	REMARKS
29	90240-12074	PIN, clevis	1	
30	92901-12600	WASHER, Plate	1	
31	91401-30022	PIN, cotter	1	
32	1W1-22128-00	COVER, thrust 1	2	
33	90480-22263	GROMMET	1	
34	3R4-22261-00	DAMPER, sub tank	1	
35	4V4-22262-01	HOLDER, sub tank	1	
36	92502-06016	SCREW, Pan-head	1	
37	92902-06100	WASHER, sPring	1	
38	92902-06600	WASHER	1	

FIG. 19 STEERING



REF. NO.	PART NO.	DESCRIPTION	Q'TY	REMARKS
1	3R4-23435-00-98	CROWN, handle	1	low gloss black
2	3R4-23389-00	GUIDE, cable	1	
3	3R4-23442-00-98	HOLDER, handle lower	2	low gloss black
4	1E6-23434-00	HOLDER, damPer	4	
5	90209-12143	WASHER	2	
6	90209-10195	WASHER	2	
7	92901-10100	WASHER, sPring	2	
8	95302-10700	NUT	2	
9	91402-20018	PIN, cotter	2	
10	95821-08040	BOLT, flange	4	
11	95821-08055	BOLT, flange	1	
12	95701-08100	NUT, flange	1	
13	90105-14136	BOLT, washer based	1	
14	1E6-23441-00-98	HOLDER, handle uPPer	2	low gloss black
15	95821-08035	BOLT, flange	4	
16	93332-00001	BEARING	1	
17	93332-00008	BEARING	1	
18	1W1-23416-00	COVER, ball race 2	1	
19	90179-25033	NUT	1	
20	1W2-23318-00	HOLDER, cable 1	1	
21	98501-05018	SCREW, Pan head	1	
22	92901-05600	WASHER, Plate	1	
23	95301-05600	NUT	1	

FIG. 20 FRONT FORK



REF. NO.	PART NO.	DESCRIPTION	Q'TY	REMARKS
1	4V5-23101-L0	FRONT FORK ASSY	1	
2	4V5-23126-L0	•TUBE, outer 1	1	
3	4V5-23136-L0	•TUBE, outer 2	1	
4	4V2-23125-L0	•METAL, slide 1	2	
5	1W4-23145-L0	•OIL SEAL	2	
6	4V2-23146-L0	•WASHER, oil seal	2	
7	3R4-23153-00	•RING, snap	2	
8	3R4-23144-00	•SEAL, dust	2	
9	3R4-23148-00	•COVER, dust seal	2	
10	4V2-23110-L0	•INNER TUBE COMP.1	2	
11	3R4-23173-L0	•SPINDLE, taPer	2	
12	1W4-23114-L0	•GASKET	2	
13	4V5-23170-L0	•CYLINDER COMP., front fork	2	
14	1W4-23151-L0	••SPRING, rebound	2	
15	4V2-23157-L0	••RING, Piston	4	
16	4V5-23141-L0	•SPRING, front fork	2	
17	1W4-23142-L0	•SEAT, sPring uPPer	2	
18	4V5-23340-L0-33	•UNDER BRACKET COMP.	1	yamaha black
19	3R4-23191-M0	•BOOT	2	
20	1W4-23192-L0	•BAND	2	
21	1W4-23489-L0	•BAND	2	
22	1W4-23111-L1	•BOLT, caP	2	
23	1W1-23185-L0	•CAP, front fork	2	
24	509-23190-L0	•AIR VALVE COMP.	2	
25	3R4-23389-00	•GUIDE, cable	1	
26	4V2-23167-L0	•HOLDER, axle	1	
27	509-23163-L0	•O-RING	2	
28	509-23158-L0	•GASKET	2	



FIG. 20 FRONT FORK

REF. NO.	PART NO.	DESCRIPTION	Q'TY	REMARKS
29	122-23129-00	•GASKET, drain Plug	2	
30	3R4-23181-L0	•BOLT, hexa8on socket head	2	
31	90109-08397	•BOLT	4	
32	95311-08600	•NUT	4	
33	95311-06600	•NUT	4	
34	92901-08100	•WASHER, sPring	4	
35	90201-08544	•WASHER, Plate	3	
36	92901-06100	•WASHER, sPring	4	
37	122-23119-01	•PLUG, drain	2	
38	4V2-23194-L0	•SCREW, boot band	2	
39	4V5-23389-00	•GUIDE, cable	1	
40	1W4-23118-L0	•SPACER	2	

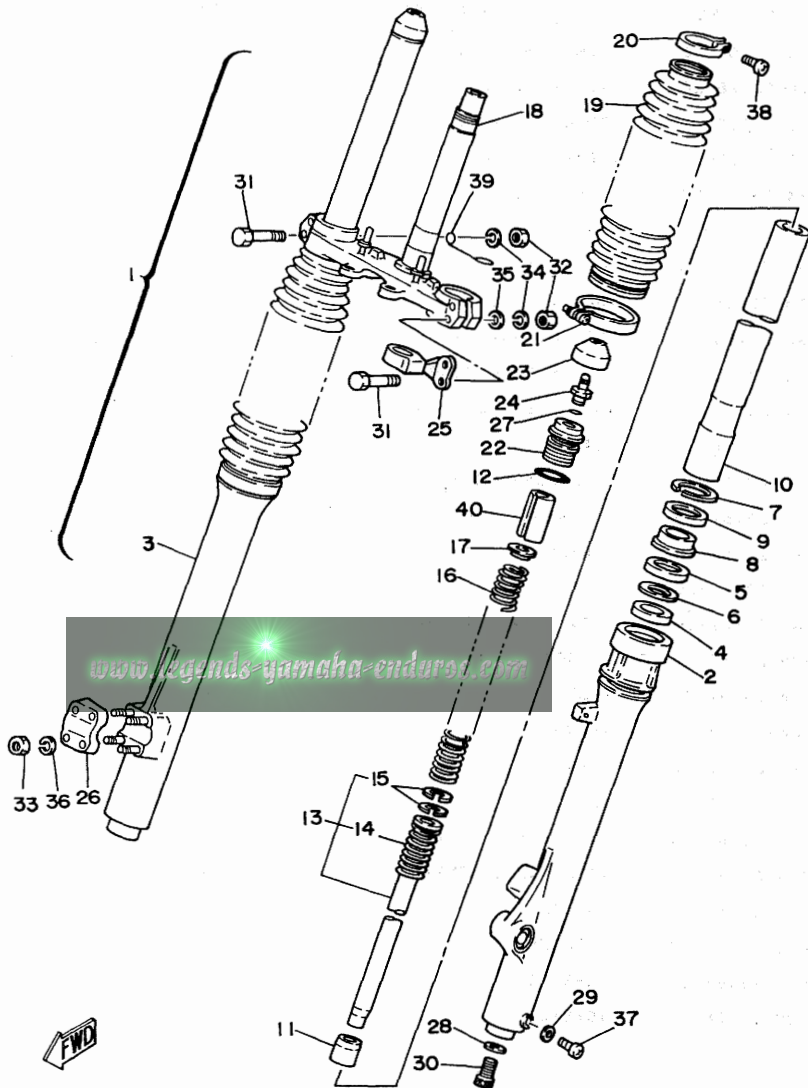
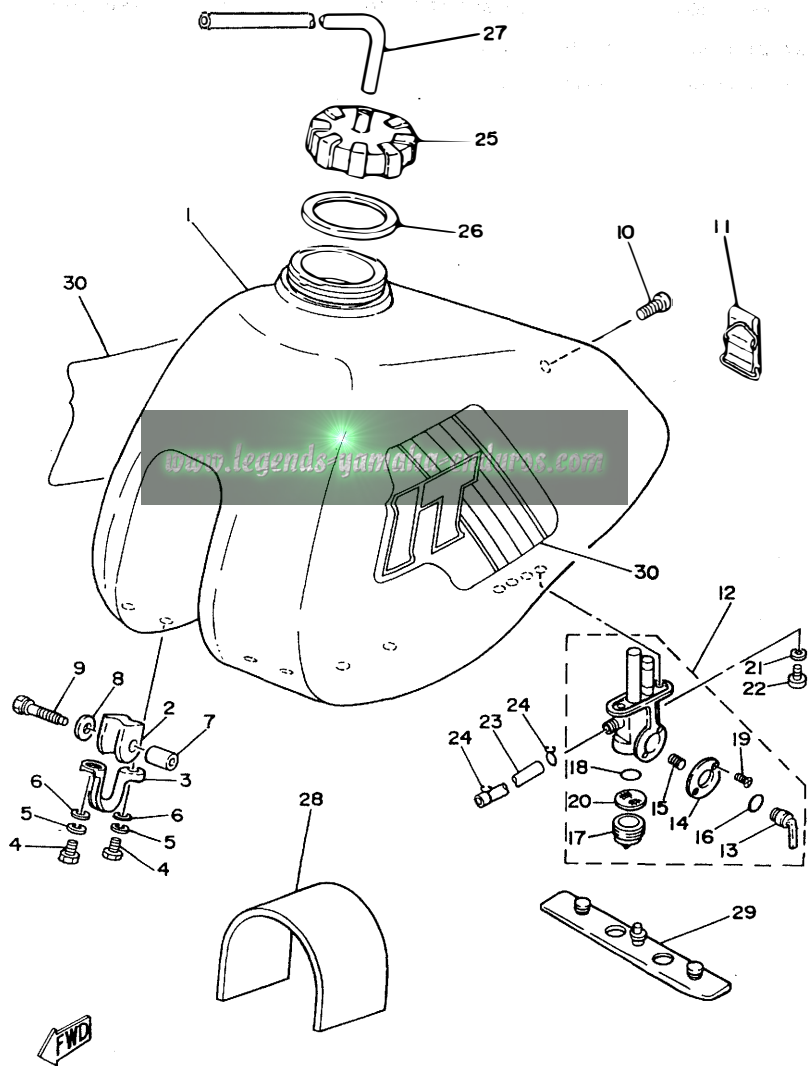


FIG. 21 FUEL TANK

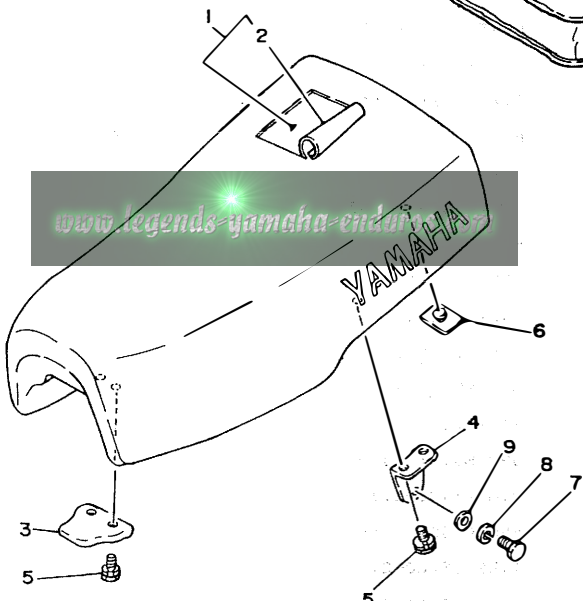
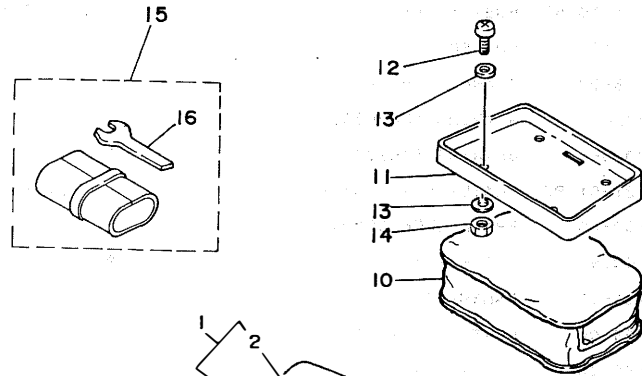


REF. NO.	PART NO.	DESCRIPTION	Q'TY	REMARKS
1	4V5-24110-10	FUEL TANK COMP.	1	sky blue
2	1W1-24182-01	DAMPER, locatin& 2	2	
3	1W1-24144-01	HOLDER, damPer	2	
4	97301-06012	BOLT	4	
5	92901-06100	WASHER, sPrin&	4	
6	92901-06600	WASHER, Plate	4	
7	90387-07393	COLLAR	2	
8	90201-06407	WASHER, Plate	2	
9	90119-06022	BOLT, with washer	2	
10	98902-06018	SCREW, bind	1	
11	3R3-24173-00	BAND, tank fittin& 1	1	
12	4V5-24500-00	FUEL COCK ASSY 1	1	
13	4V5-24524-00	•LEVER, cock	1	
14	4V5-24525-00	•PLATE, lever fittin&	1	
15	357-24529-10	•SPRING	1	
16	4X8-24533-00	•SEAL, cock	1	
17	4X8-24521-00	•CUP, filter	1	
18	4X8-24565-00	•GASKET	1	
19	4X8-24535-00	•SCREW, lever fittin&	2	
20	4X8-24515-00	•NET, filter 2	1	
21	90202-06010	WASHER, Plate	2	
22	90149-06011	SCREW	2	
23	90445-11152	HOSE	1	
24	90467-10008	CLIP	2	
25	1K7-24611-01	BODY, caP	1	
26	1K7-24612-02	GASKET, caP	1	
27	90445-09117	HOSE	1	
28	1W1-24183-00	DAMPER, locatin& 3	1	





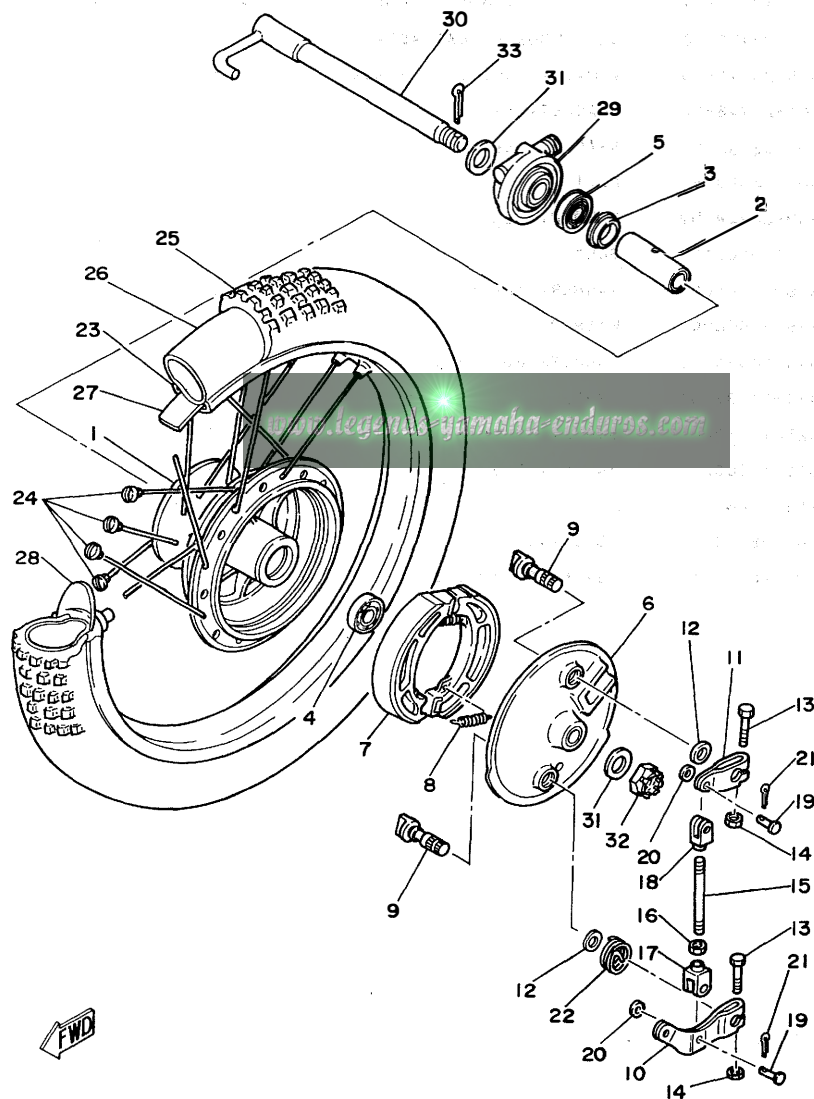
FIG. 22 SEAT



REF. NO.	PART NO.	DESCRIPTION	Q'TY	REMARKS
1	4V5-W2473-10	SEMI-DOUBLE SEAT ASSY	1	
2	4V5-24771-10	COVER, semi-double seat	1	
3	1M1-24748-00	BRACKET, seat	1	
4	1W1-24738-00	BRACKET, seat	2	
5	90101-06304	BOLT	6	
6	509-24724-00	DAMPER, seat	2	
7	97301-06015	BOLT	2	
8	92902-06100	WASHER, sPring	2	
9	92902-06600	WASHER	2	
10	4V5-24850-00	CARRIER BOX ASSY	1	
11	4V5-24833-00	BRACKET, carrier 2	1	
12	92501-06020	SCREW, Pan head	4	
13	90201-06067	WASHER, Plate	8	
14	95602-06100	NUT, u	4	
15	1W2-28100-10	TOOL KIT	1	
16	1W1-28135-10	SPANNER, sPecial	1	



FIG. 23 FRONT WHEEL



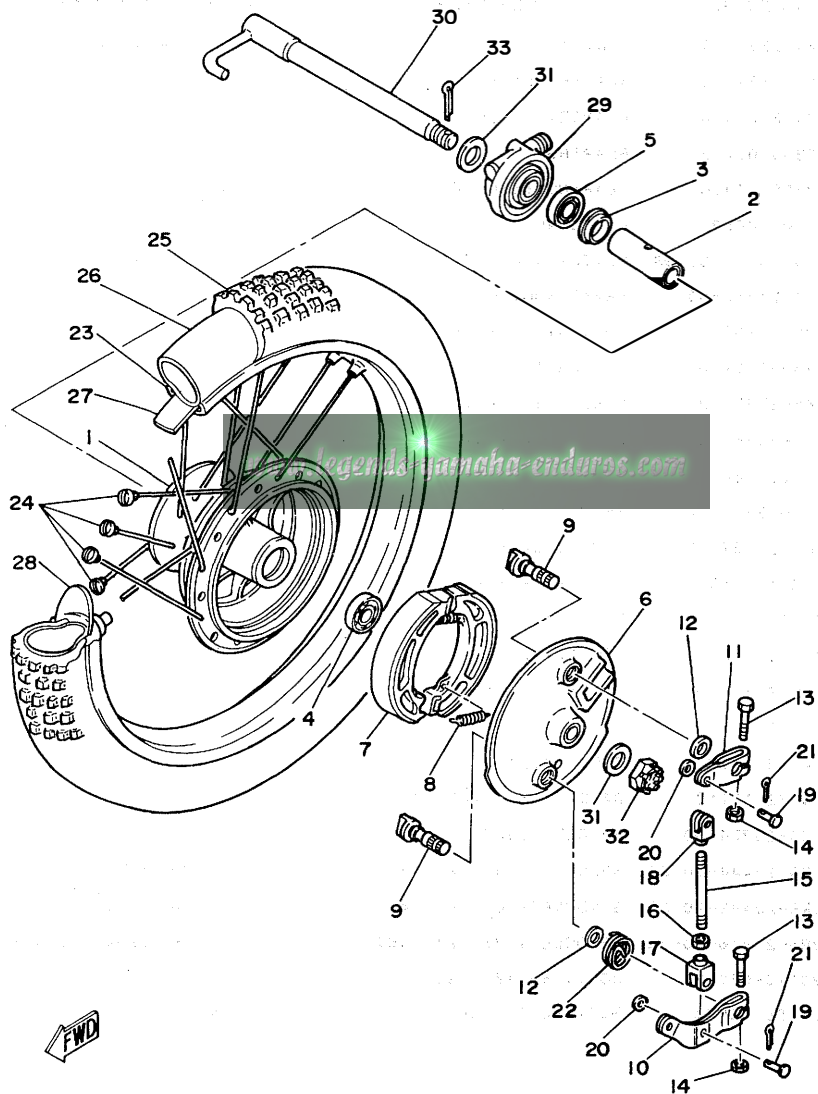
REF. NO.	PART NO.	DESCRIPTION	Q'TY	REMARKS
1	1K7-25111-10-98	HUB, front	1	low gloss black
2	90560-15116	SPACER	1	
3	146-25116-00	FLANGE, sPacer 2	1	
4	93306-20203	BEARING (B6202RS)	1	
5	93306-20205	BEARING (B6202)	1	
6	3R5-25121-01-98	PLATE, brake shoe	1	low gloss black
7	3R5-25130-00	BRAKE SHOE COMP.	2	
8	90506-16036	SPRING, tension	2	
9	322-25151-00	CAMSHAFT	2	
10	3R5-25155-00	LEVER, camshaft 1	1	
11	3R5-25156-00	LEVER, camshaft 2	1	
12	137-25159-00	SEAL, camshaft	2	
13	90101-06278	BOLT	2	
14	95301-06600	NUT	2	
15	3R5-25161-00	ROD, connecting	1	
16	95301-06700	NUT	1	
17	3R5-25163-00	END, rod 1	1	
18	3R5-25164-00	END, rod 2	1	
19	90240-06006	PIN, clevis	2	
20	92901-06200	WASHER, Plain	2	
21	91401-20012	PIN, cotter	2	
22	90508-20425	SPRING, torsion	1	
23	94416-21234	RIM (1.60-21)	1	
24	2W6-25104-01	SPOKE SET, front	1	
25	94130-21654	TIRE (3.00-21)	1	
26	94230-21126	TUBE (3.00-21)	1	inoue
27	94330-21088	BAND, rim (3.00-21)	1	inoue
28	2J5-25394-00	SPACER, bead	1	

FWD

D3

FIG. 23 FRONT WHEEL

REF. NO.	PART NO.	DESCRIPTION	Q'TY	REMARKS
29	1W2-25190-00	GEAR UNIT ASSY	1	
30	4V5-25181-00	AXLE, wheel	1	
31	90201-15785	WASHER, Plate	2	
32	90171-14020	NUT, castle	1	
33	91401-30030	PIN, cotter	1	



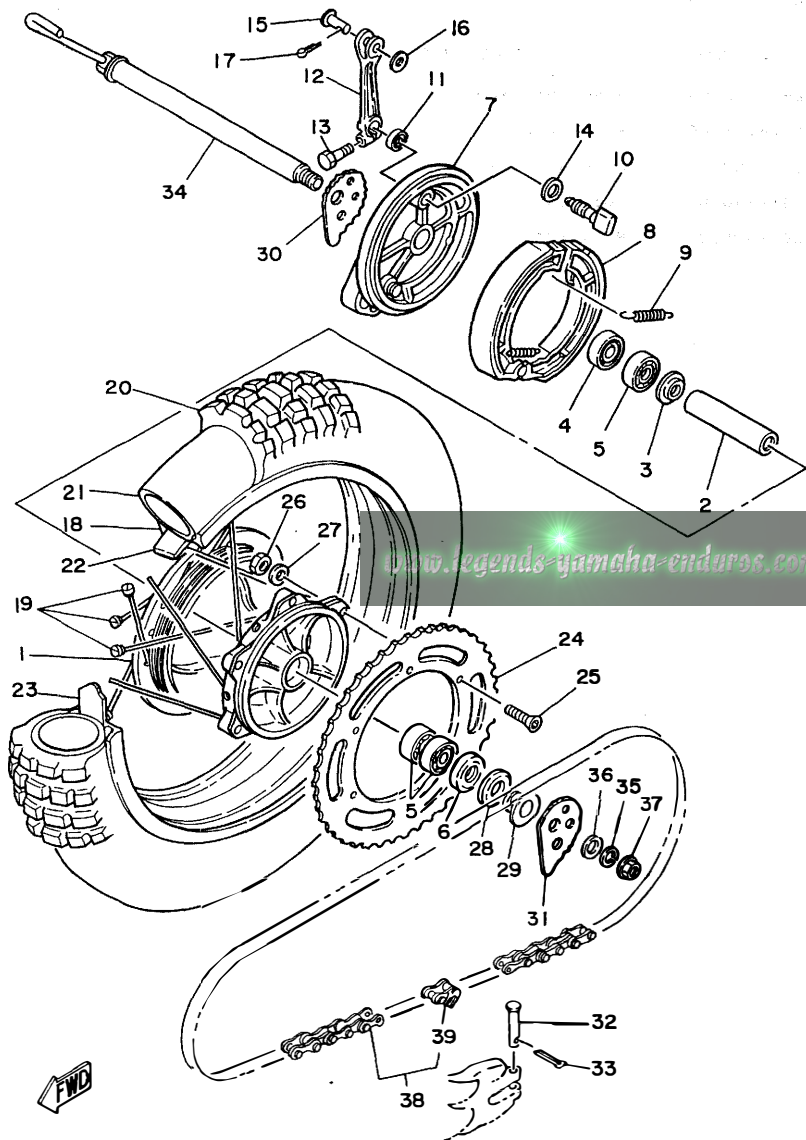


FIG. 24 REAR WHEEL

REF. NO.	PART NO.	DESCRIPTION	Q'TY	REMARKS
1	4V4-25311-00-98	HUB, rear	1	low gloss black
2	4V4-25317-00	SPACER, bearing	1	
3	4V4-25315-00	FLANGE, spacer	1	
4	93306-00418	BEARING	1	
5	93306-00406	BEARING (B6004Z)	3	
6	93102-28022	OIL SEAL	1	
7	4V5-25321-01-98	PLATE, brake shoe	1	low gloss black
8	4V4-25330-00	BRAKE SHOE COMP.	2	
9	90507-20002	SPRING, tension	2	
10	4V5-25151-00	CAMSHAFT	1	
11	148-25359-00	SEAL, camshaft	1	
12	431-25355-00	LEVER, camshaft	1	
13	90101-06291	BOLT	1	
14	148-25353-00	SHIM, camshaft	1	
15	1W2-27237-00	PIN, clevis	1	
16	90201-12631	WASHER, plate	1	
17	91401-25022	PIN, cotter	1	
18	94425-17281	RIM (2.50-17)	1	
19	4V6-25304-00	SPOKE SET, rear	1	
20	94156-17675	TIRE (5.60-17)	1	
21	94256-17180	TUBE (5.60-17)	1	
22	94332-17112	BAND, rim (3.25-17)	1	inoue
23	2X5-25394-00	SPACER, bead	2	
24	3R6-25444-10-33	SPROCKET, driven (44T)	1	UR STD yamaha black
	3R6-25442-10-33	SPROCKET, driven (42T)	1	AP yamaha black
	3R6-25446-10-33	SPROCKET, driven (46T)	1	AP yamaha black
25	90110-08038	BOLT, hexagon socket head	6	
26	90185-08054	NUT, self-locking	6	

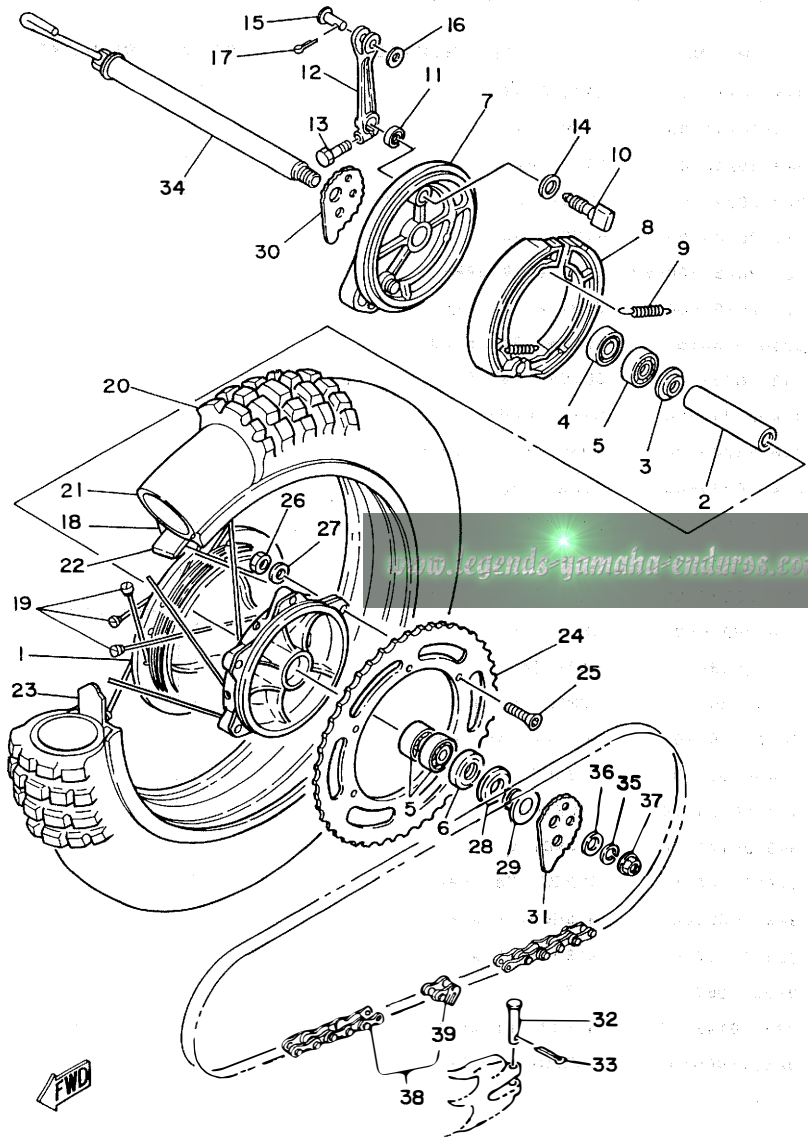
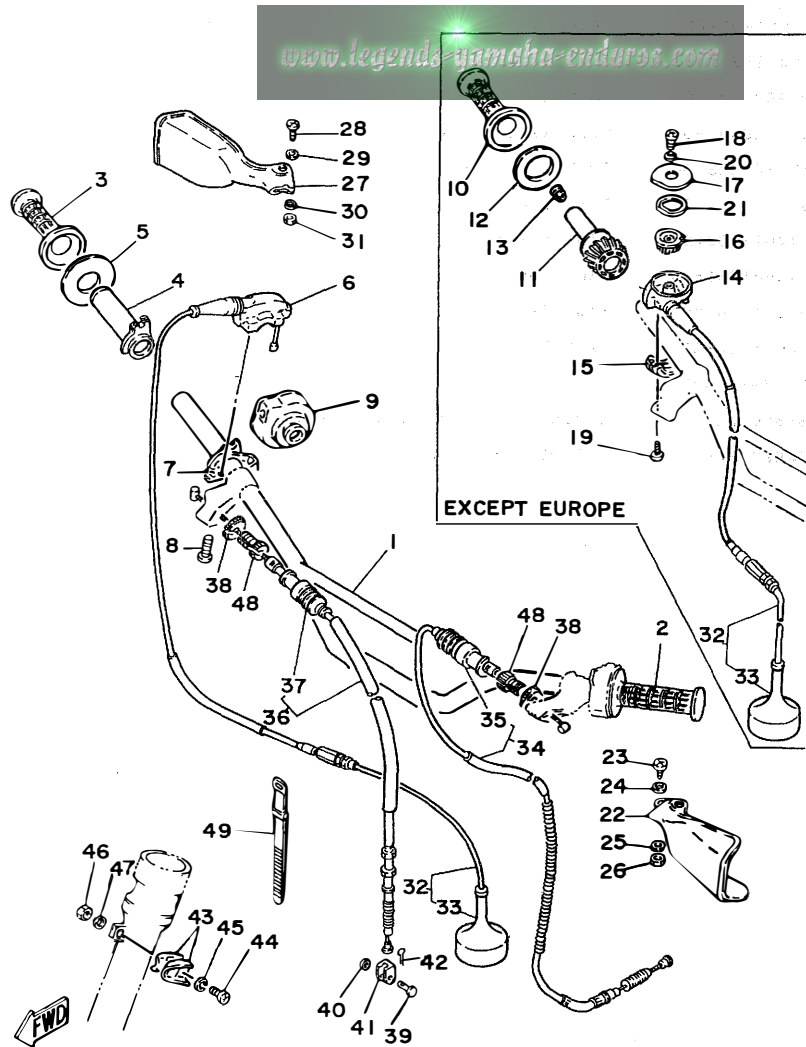


FIG. 24 REAR WHEEL

REF. NO.	PART NO.	DESCRIPTION	Q'TY	REMARKS
27	90201-081A6	WASHER, Plate	6	
28	4V4-25367-00	COVER, hub dust	1	
29	90387-201E6	COLLAR	1	
30	4V5-25389-00	PULLER, chain 2	1	
31	4V5-25388-00	PULLER, chain 1	1	
32	91701-05055	PIN, clevis	2	
33	91401-16012	PIN, cotter	2	
34	4V5-25381-00	AXLE, wheel	1	
35	92901-18100	WASHER, sPrin8	1	
36	92901-20600	WASHER	1	
37	90179-18332	NUT	1	
38	94585-20108	CHAIN, drive (D1D520DS 108L)	1	
39	94685-20001	JOINT, chain	1	

FWD

FIG. 25 HANDLEBAR CABLE

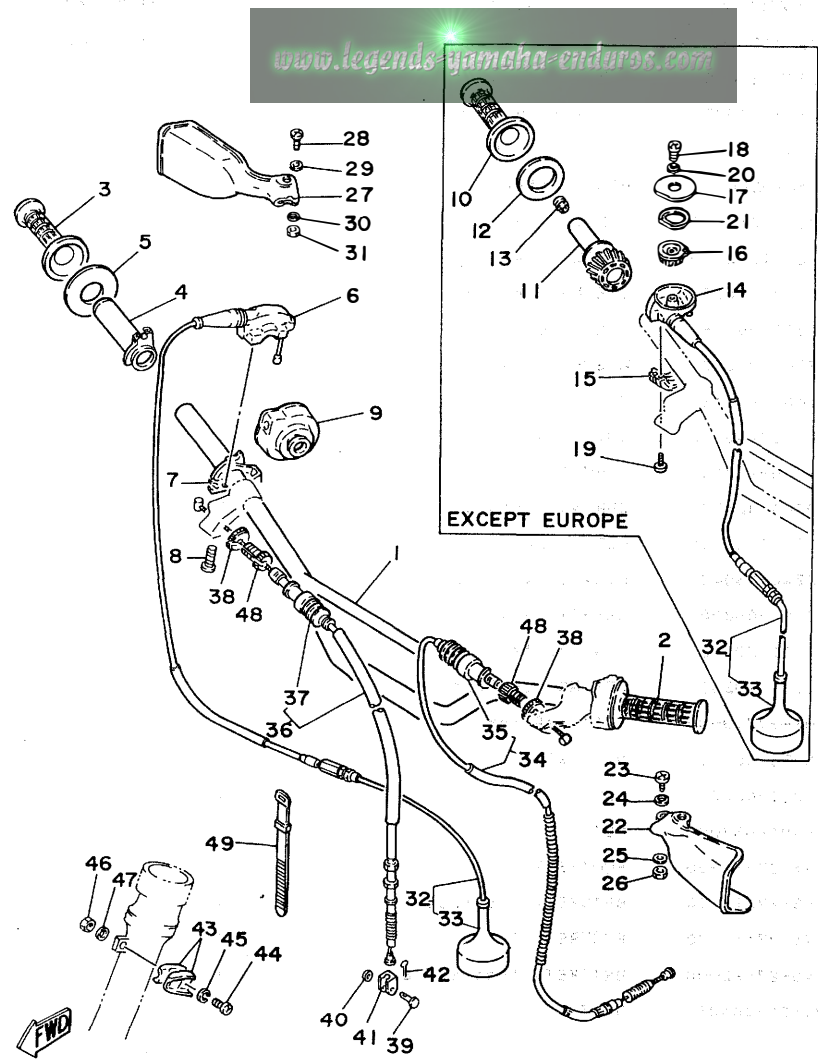


REF. NO.	PART NO.	DESCRIPTION	Q'TY	REMARKS
1	3R4-26111-00	HANDLEBAR	1	
2	4V4-26241-00	GRIP (L.H)	1	
3	3R9-26242-00	GRIP (R.H)	1	
4	322-26243-00	TUBE, throttle guide	1	
5	1W1-26249-00	RING, leaf	1	
6	322-26281-00-98	CAP, grip upper	1	for Europe
7	322-26282-00-98	CAP, grip lower	1	
8	98501-05016	SCREW, Pan head	2	
9	3R8-26287-00	COVER, cap grip	1	
10	4V4-26242-00	GRIP (R.H)	1	
11	4V6-26243-00	TUBE, throttle guide	1	
12	4V4-26249-00	RING, leaf	1	
13	688-82535-00	GROMMET	1	
14	4V4-26281-00	CAP, grip upper	1	
15	4V4-26282-00	CAP, grip lower	1	except Europe
16	4V6-2628E-00	GEAR, bevel	1	
17	4V4-2628F-00	CAP, gear	1	
18	98906-05010	SCREW, bind	1	
19	98501-05016	SCREW, Pan head	2	
20	90430-05009	GASKET	1	
21	4V4-2628G-00	PACKING	1	
22	3R9-26141-00	GUARD, brush 1	1	sky blue
23	92501-06015	SCREW, Pan head	1	
24	92901-06600	WASHER, Plate	1	
25	92901-06200	WASHER, Plain	1	
26	95301-06700	NUT	1	
27	3R9-26142-00	GUARD, brush 2	1	sky blue
28	92501-06015	SCREW, Pan head	1	

D7

P. 101. 21006  
Jan '81

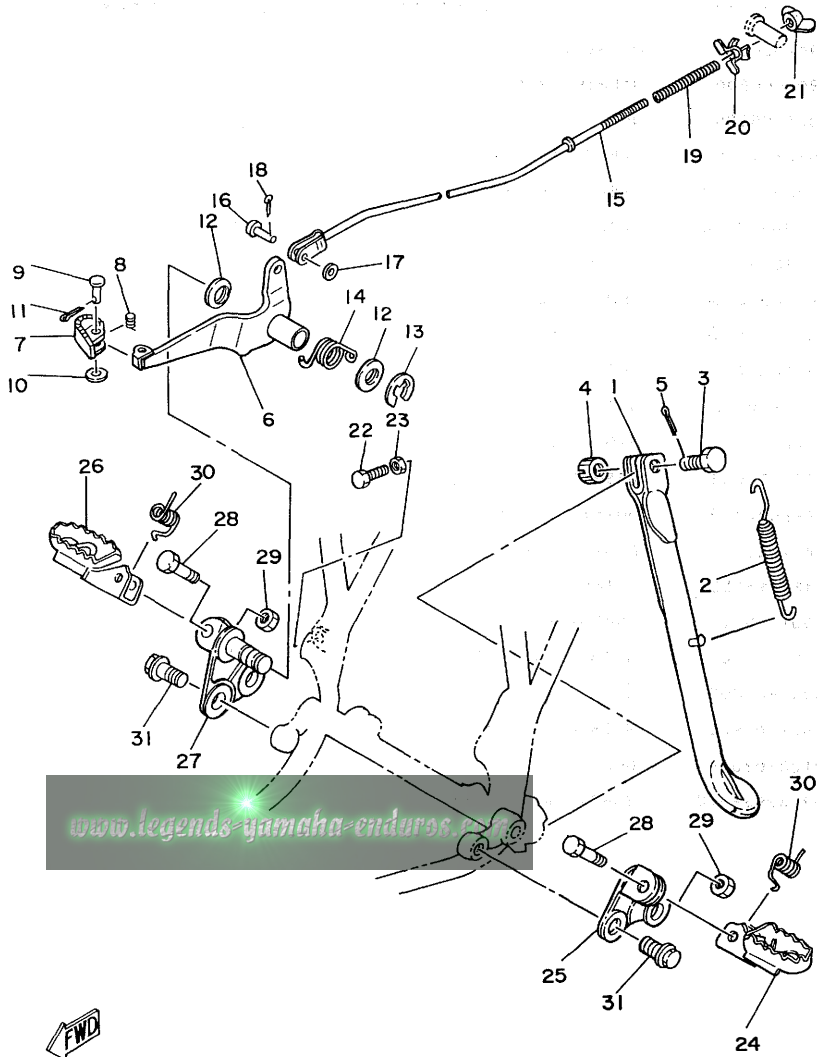
FIG. 25 HANDLEBAR CABLE



REF. NO.	PART NO.	DESCRIPTION	Q'TY	REMARKS
29	92901-06600	WASHER, Plate	1	
30	92901-06200	WASHER, Plain	1	
31	95301-06700	NUT	1	
32	1W6-26311-01	CABLE, throttle 1	1	for Europe
	4V4-26311-00	CABLE, throttle 1	1	except Europe
33	510-26329-00	•CAP, rubber	1	
34	4V5-26335-00	CABLE, clutch	1	
35	1E6-26342-00	•BOOT, cable	1	
36	4V5-26341-00	CABLE, brake	1	
37	1E6-26342-00	•BOOT, cable	1	
38	90179-08148	NUT	2	
39	90240-08012	PIN, clevis	1	
40	90201-08083	WASHER, Plate	1	
41	156-26347-00	JOINT, cable	1	
42	91401-20012	PIN, cotter	1	
43	90462-14055	CLAMP	2	
44	92501-06025	SCREW, Pan head	1	
45	92901-06100	WASHER, sPring	1	
46	95301-06600	NUT	1	
47	92901-06600	WASHER, Plate	1	
48	90123-08046	BOLT	2	
49	437-83936-10	BAND, switch cord	1	
50	90387-22660	COLLAR	1	

D8

FIG. 26 STAND.FOOTREST



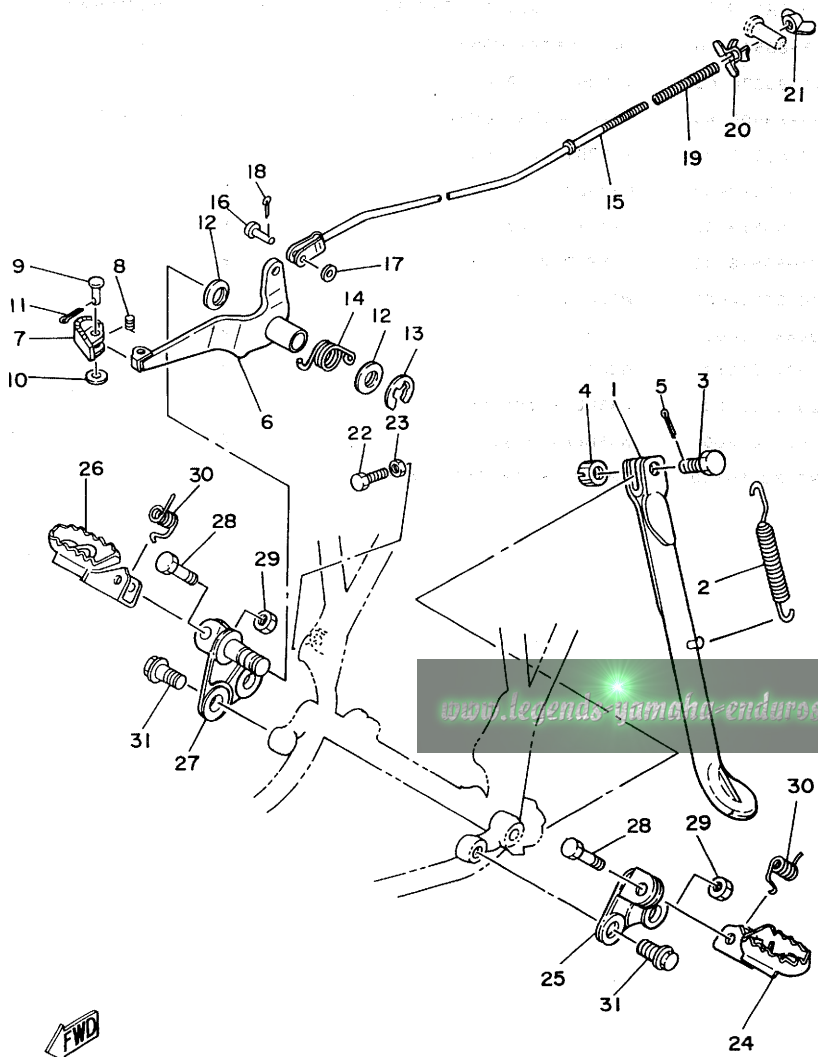
REF. NO.	PART NO.	DESCRIPTION	Q'TY	REMARKS
1	4V5-27311-00-33	STAND, side	1	yamaha black
2	90507-29008	SPRING, tension	1	
3	90102-10006	BOLT, with hole	1	
4	95302-10900	NUT, slotted	1	
5	91401-20025	PIN, cotter	1	
6	4V5-27211-00	PEDAL, brake	1	
7	3R8-27242-00	PEDAL, brake	1	
8	90508-14429	SPRING, torsion	1	
9	91701-06028	PIN, clevis	1	
10	92901-06600	WASHER, Plate	1	
11	91401-20012	PIN, cotter	1	
12	4V5-27286-00	COVER, dust	2	
13	93430-10015	CIRCLIP	1	
14	90508-32478	SPRING, torsion	1	
15	4V6-27231-00	ROD, brake	1	
16	90240-06040	PIN, clevis	1	
17	92901-06200	WASHER, Plain	1	
18	91401-20012	PIN, cotter	1	
19	90501-10245	SPRING, compression	1	
20	1W2-27239-00	SEAT, spring	1	
21	90175-06013	NUT, wing	1	
22	97301-06020	BOLT	1	
23	95301-06700	NUT	1	
24	4V4-27411-00	FOOTREST 1	1	
25	4V5-27412-00	BRACKET, footrest 1	1	
26	4V4-27411-00	FOOTREST 1	1	
27	4V5-27422-00	BRACKET, footrest 2	1	
28	90101-08428	BOLT	2	





FIG. 26 STAND-FOOTREST

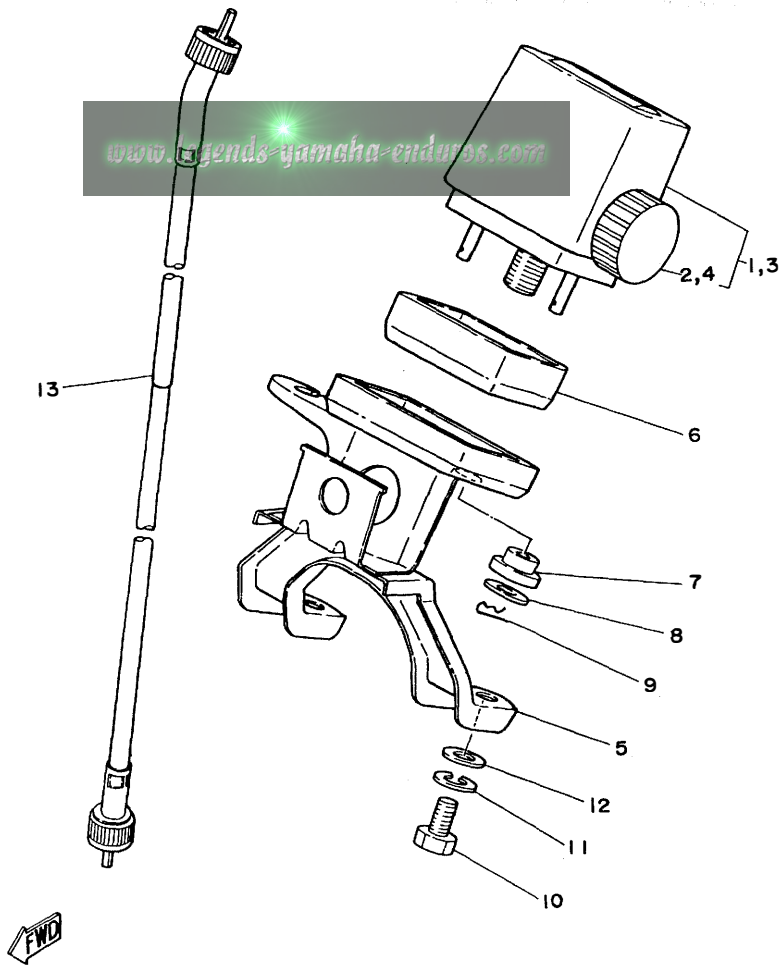
REF. NO.	PART NO.	DESCRIPTION	Q'TY	REMARKS
29	95601-08100	NUT, u	2	
30	90508-20023	SPRING, torsion	2	
31	90105-12096	BOLT, washer based	4	



FWD

D10

FIG. 27 METER



REF. NO.	PART NO.	DESCRIPTION	Q'TY	REMARKS
1	4V5-83505-F0	TRIP METER COMP.	1	UR km/h
2	4V5-83578-00	.KNOB, triP meter	1	
3	4V5-83505-60	TRIP METER COMP.	1	UR mile/h
4	4V5-83578-00	.KNOB, triP meter	1	
5	4V5-83513-00	DAMPER	1	
6	4V5-83519-00	BRACKET, meter	1	
7	1M1-83526-00	DAMPER 2	2	
8	1E6-83524-60	WASHER, sPecial	2	
9	90468-12007	CLIP	2	
10	97321-06012	BOLT	2	
11	92901-06100	WASHER, sPring	2	
12	92901-06600	WASHER, Plate	2	
13	4V5-83550-00	SPEEDOMETER CABLE ASSY	1	



**D11**

FIG. 28 HEADLIGHT

REF. NO.	PART NO.	DESCRIPTION	Q'TY	REMARKS
1	4V5-84110-00	HEADLIGHT UNIT ASSY	1	
2	4G2-84114-00	•BULB, headlight	1	
3	4V5-84140-00	•SOCKET CORD ASSY	1	
4	4V5-84130-10	BODY ASSY, headlight	1	sky blue
5	4V5-84132-00	SPRING, screw	1	
6	849-84724-00	SCREW, lens fitting	1	
7	92901-04600	WASHER, plate	2	
8	4V5-84134-00	NUT, adjust	1	
9	4V5-84143-00	DAMPER, headlight stay	1	
10	90480-12053	GROMMET	2	
11	4V5-83592-00	DAMPER	1	
12	4V5-84141-00	EMBLEM, headlight	1	

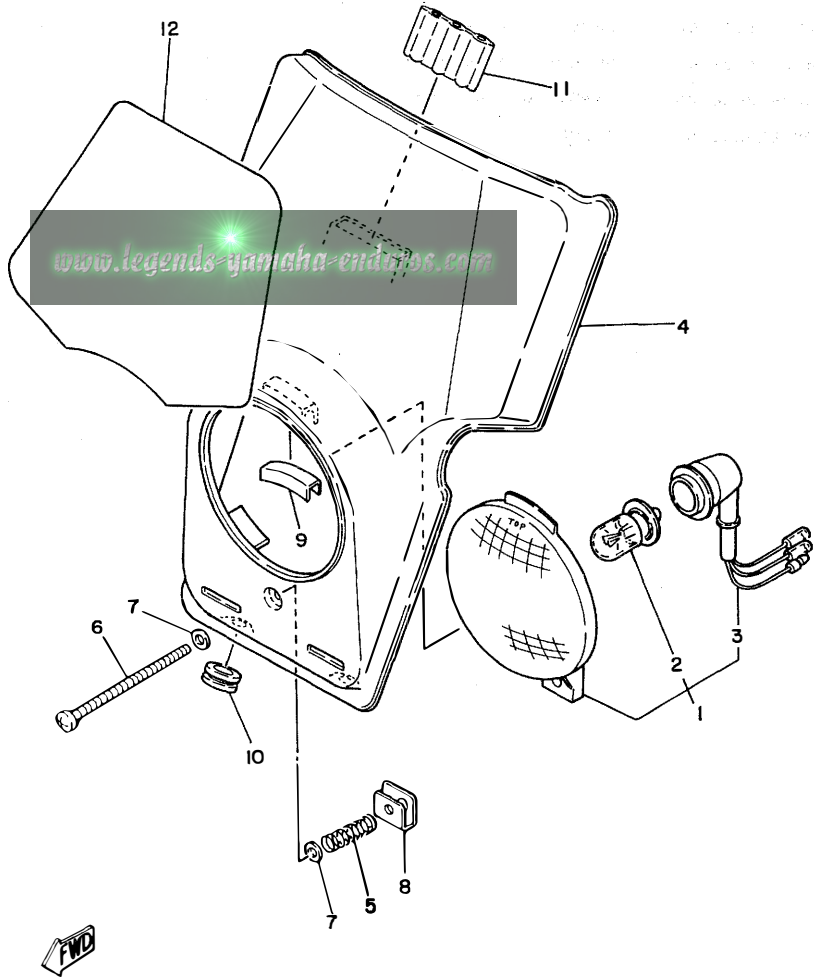
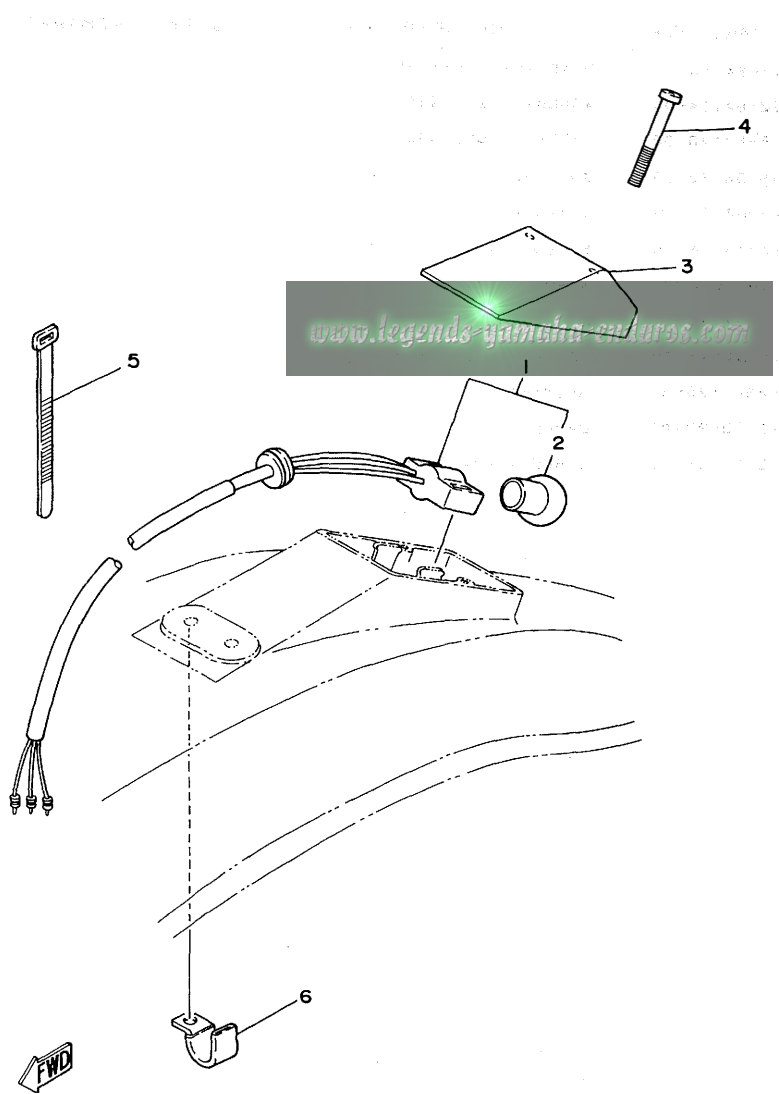


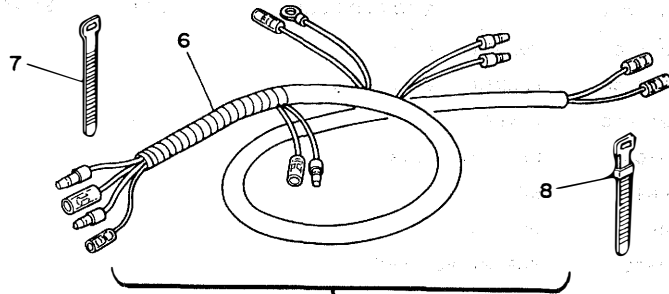
FIG. 29 TAILLIGHT



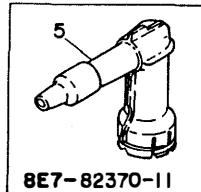
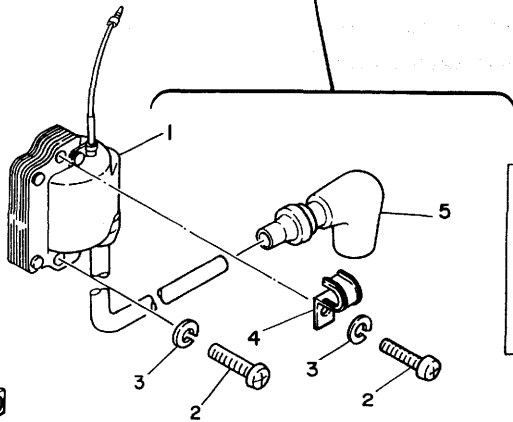
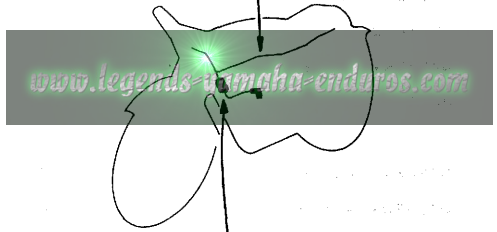
REF. NO.	PART NO.	DESCRIPTION	Q'TY	REMARKS
1	4V5-84530-00	SOCKET ASSY	1	
2	122-84514-30	BULB (6V-17/5.3W)	1	
3	4V5-84521-00	LENS, taillight	1	
4	802-84131-00	SCREW, rim adjuster	2	
5	437-83936-00	BAND, switch cord	2	
6	90462-05005	CLAMP	1	

**D13**

FIG. 30 ELECTRICAL 1

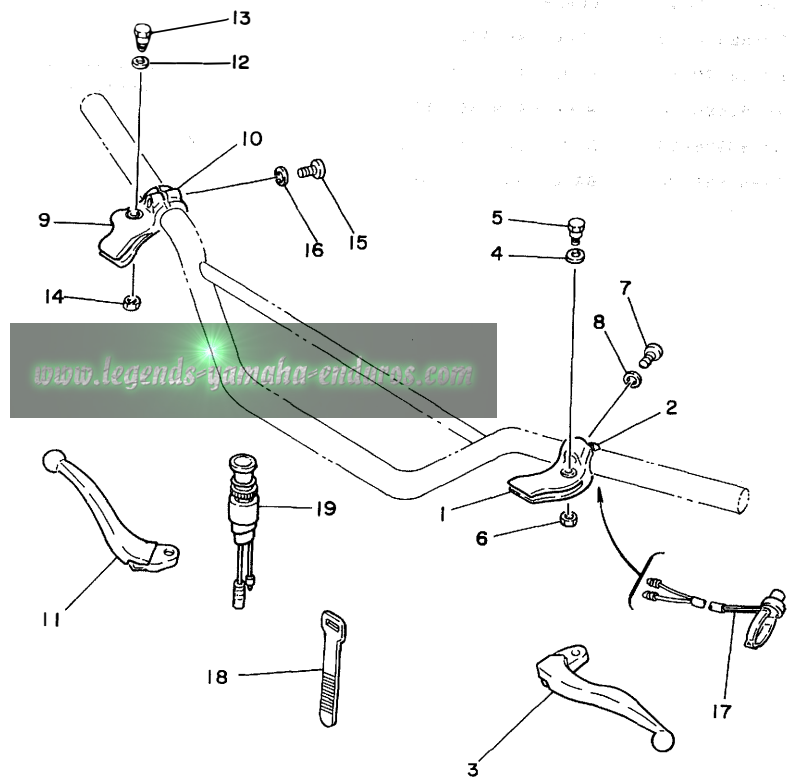


REF. NO.	PART NO.	DESCRIPTION	Q'TY	REMARKS
1	1M2-82310-40	IGNITION COIL ASSY	1	
2	92501-06025	SCREW, Pan head	2	
3	92901-06100	WASHER, sPring	2	
4	90462-05005	CLAMP	1	
5	3R0-82370-20	PLUG CAP ASSY	1	UR
	8E7-82370-11	PLUG CAP ASSY	1	UR with noise suPPressor
6	4V5-82590-00	WIRE HARNESS ASSY	1	
7	437-83936-00	BAND, switch cord	4	
8	256-83936-00	BAND, switch cord	1	



FWD

FIG. 31 HANDLE SWITCH-LEVER



REF. NO.	PART NO.	DESCRIPTION	Q'TY	REMARKS
1	4V4-82911-00	HOLDER, lever 1	1	
2	4V4-82913-00	HOLDER, lever lower 1	1	
3	3M2-83912-00	LEVER 1	1	
4	90201-08083	WASHER, Plate	1	
5	90109-06410	BOLT	1	
6	95601-06100	NUT, u	1	
7	98506-05020	SCREW, Pan head	2	
8	92906-05100	WASHER, sPrin&	2	
9	4V4-82921-00	HOLDER, lever 2	1	
10	4V4-82913-00	HOLDER, lever lower 1	1	
11	3M2-83922-00	LEVER 2	1	
12	90201-08083	WASHER, Plate	1	
13	90109-06410	BOLT	1	
14	95601-06100	NUT, u	1	
15	98506-05020	SCREW, Pan head	2	
16	92906-05100	WASHER, sPrin&	2	
17	3R4-83976-00	SWITCH, handle 1	1	
18	437-83936-00	BAND, switch cord	2	
19	4V5-82520-00	LIGHT SWITCH ASSY	1	



YAMAHA MOTOR COMPANY, LTD.

YAMAHA MOTOR COMPANY, LTD.

YAMAHA MOTOR COMPANY, LTD.

YAMAHA MOTOR COMPANY, LTD.

YAMAHA MOTOR COMPANY, LTD.

YAMAHA MOTOR COMPANY, LTD.

YAMAHA MOTOR COMPANY, LTD.

YAMAHA MOTOR COMPANY, LTD.

YAMAHA MOTOR COMPANY, LTD.

YAMAHA MOTOR COMPANY, LTD.

YAMAHA MOTOR COMPANY, LTD.

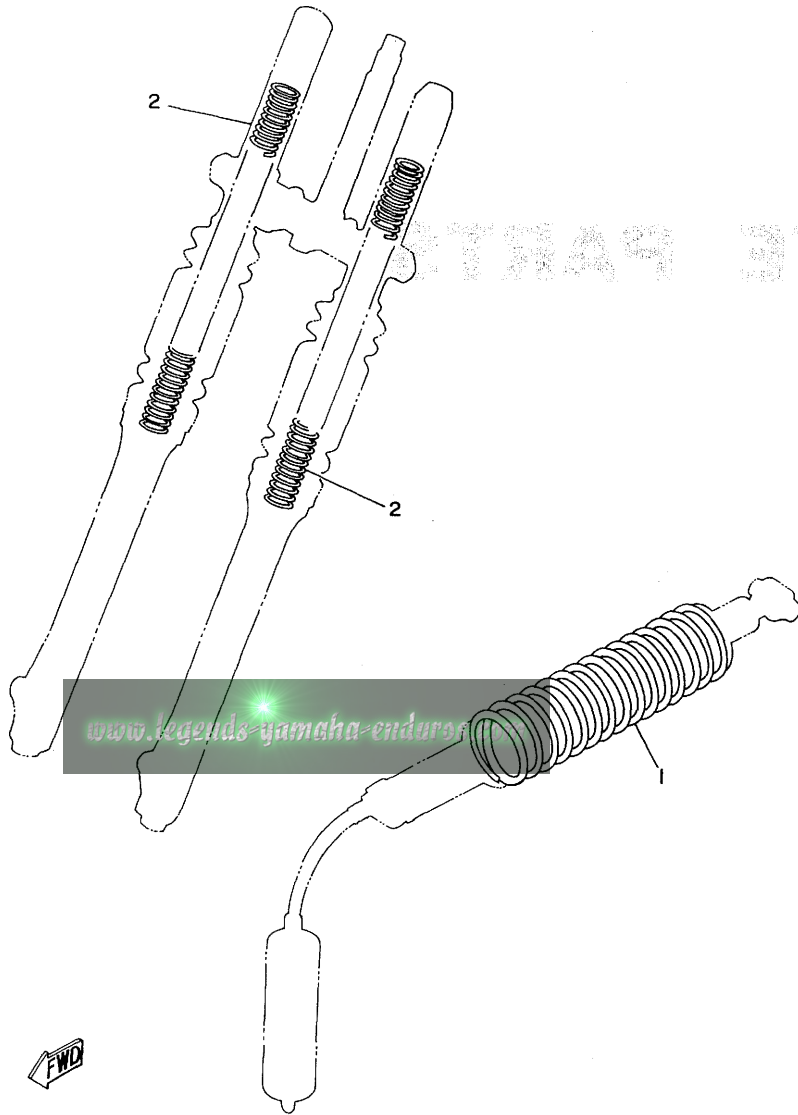
# ALTERNATE PARTS

[www.legends-yamaha-enduros.com](http://www.legends-yamaha-enduros.com)



FIG. 32 ALTERNATE (CHASSIS)

REF. NO.	PART NO.	DESCRIPTION	Q'TY	REMARKS
1	4V5-22212-10	SPRING	1	UR soft (yellow/purple)
	4V5-22212-20	SPRING	1	UR hard (yellow/white)
2	4V5-23141-10	SPRING, front fork (K1=0.277, K2=0.314)	2	UR soft
	4V5-23141-20	SPRING, front fork (K1=0.339, K2=0.385)	2	UR hard



**E2**



1990 125 CC

1991 125 CC

1992 125 CC

1993 125 CC

1994 125 CC

1995 125 CC

1996 125 CC

1997 125 CC

1998 125 CC

1999 125 CC

2000 125 CC

2001 125 CC

2002 125 CC

2003 125 CC

2004 125 CC

2005 125 CC

2006 125 CC

2007 125 CC

2008 125 CC

2009 125 CC

2010 125 CC

2011 125 CC

2012 125 CC

2013 125 CC

2014 125 CC

2015 125 CC

2016 125 CC

YAMAHA 125 CC

YAMAHA 125 CC

YAMAHA 125 CC

YAMAHA 125 CC

YAMAHA 125 CC

YAMAHA 125 CC

YAMAHA 125 CC

YAMAHA 125 CC

YAMAHA 125 CC

YAMAHA 125 CC

YAMAHA 125 CC

YAMAHA 125 CC

YAMAHA 125 CC

YAMAHA 125 CC

YAMAHA 125 CC

YAMAHA 125 CC

YAMAHA 125 CC

YAMAHA 125 CC

YAMAHA 125 CC

YAMAHA 125 CC

YAMAHA 125 CC

YAMAHA 125 CC

YAMAHA 125 CC

YAMAHA 125 CC

YAMAHA 125 CC

YAMAHA 125 CC

YAMAHA 125 CC

YAMAHA 125 CC

YAMAHA 125 CC

YAMAHA 125 CC

YAMAHA 125 CC

YAMAHA 125 CC

YAMAHA 125 CC

YAMAHA 125 CC

YAMAHA 125 CC

YAMAHA 125 CC

YAMAHA 125 CC

YAMAHA 125 CC

YAMAHA 125 CC

YAMAHA 125 CC

YAMAHA 125 CC

YAMAHA 125 CC

YAMAHA 125 CC

YAMAHA 125 CC

YAMAHA 125 CC

YAMAHA 125 CC

YAMAHA 125 CC

YAMAHA 125 CC

YAMAHA 125 CC

YAMAHA 125 CC

YAMAHA 125 CC

YAMAHA 125 CC

YAMAHA 125 CC

YAMAHA 125 CC

YAMAHA 125 CC

YAMAHA 125 CC

# REPAIR KIT

[www.legends-yamaha-enduros.com](http://www.legends-yamaha-enduros.com)



FIG. 33 REPAIR KIT

REF. NO.	PART NO.	DESCRIPTION	Q'TY	REMARKS
1	4V6-11630-00	PISTON ASSY (STD)	1	
2	4V6-11631-00-94	•PISTON (STD)	1	UR
	4V6-11631-00-96	•PISTON (STD)	1	UR
3	4V6-11610-00	•PISTON RING SET (STD)	1	
4	275-11633-00	•PIN, Piston	1	
5	93450-19052	•CIRCLIP	2	
6	4V6-11630-10	PISTON ASSY (1ST O/S)	1	
7	4V6-11635-00	•PISTON (1ST O/S 0.25MM)	1	
8	4V6-11610-10	•PISTON RING SET (1ST O/S)	1	
9	275-11633-00	•PIN, Piston	1	
10	93450-19052	•CIRCLIP	2	
11	4V6-11630-20	PISTON ASSY (2ND O/S)	1	
12	4V6-11636-00	•PISTON (2ND O/S 0.50MM)	1	
13	4V6-11610-20	•PISTON RING SET (2ND O/S)	1	
14	275-11633-00	•PIN, Piston	1	
15	93450-19052	•CIRCLIP	2	
16	4V6-11630-30	PISTON ASSY (3RD O/S)	1	
17	4V6-11637-00	•PISTON (3RD O/S 0.75MM)	1	
18	4V6-11610-30	•PISTON RING SET (3RD O/S)	1	
19	275-11633-00	•PIN, Piston	1	
20	93450-19052	•CIRCLIP	2	
21	4V6-11630-40	PISTON ASSY (4TH O/S)	1	
22	4V6-11638-00	•PISTON (4TH O/S 1.00MM)	1	
23	4V6-11610-40	•PISTON RING SET (4TH O/S)	1	
24	275-11633-00	•PIN, Piston	1	
25	93450-19052	•CIRCLIP	2	
26	3R5-11650-00	CONNECTING ROD ASSY	1	
27	3R5-11651-00	•ROD, connecting	1	

[www.legends-yamaha-enduros.com](http://www.legends-yamaha-enduros.com)

FIG. 33 REPAIR KIT

REF. NO.	PART NO.	DESCRIPTION	Q'TY	REMARKS
28	3R5-11681-00	•PIN, crank 1	1	
29	90209-25085	•WASHER	2	
30	93310-42541	•BEARING, cylindrical	1	
31	93310-418E9	•BEARING, cylindrical	1	
32	4V6-W0001-00	GASKET KIT	1	
33	4V6-11181-00	•GASKET, cylinder head 1	1	
34	3R5-11351-00	•GASKET, cylinder	1	
35	2K7-13621-00	•GASKET, valve seat	1	
36	363-14184-00	•GASKET, float chamber	1	
37	3R4-14613-00	•GASKET, exhaust PiPe	1	
38	4V4-15451-00	•GASKET, crankcase cover	1	
39	3R4-15462-00	•GASKET, crankcase cover 3	1	
40	93210-14104	•O-RING	1	
41	90430-06016	•GASKET	1	
42	90430-12038	•GASKET	1	
43	93210-29282	•O-RING	1	
44	2K7-W0003-00	OIL SEAL KIT	1	
45	93103-30092	•OIL SEAL	1	
46	93103-40091	•OIL SEAL	1	
47	93102-17004	•OIL SEAL	1	
48	93102-32136	•OIL SEAL	1	
49	93101-12004	•OIL SEAL	1	
50	93109-20014	•OIL SEAL	1	

[www.legends-yamaha-enduros.com](http://www.legends-yamaha-enduros.com)

E4

1.1	1.1.1	1.1.2	1.1.3	1.1.4	1.1.5	1.1.6	1.1.7	1.1.8	1.1.9	1.1.10	1.1.11	1.1.12	1.1.13	1.1.14	1.1.15	1.1.16	1.1.17	1.1.18	1.1.19	1.1.20	1.1.21	1.1.22	1.1.23	1.1.24	1.1.25	1.1.26	1.1.27	1.1.28	1.1.29	1.1.30	1.1.31	1.1.32	1.1.33	1.1.34	1.1.35	1.1.36	1.1.37	1.1.38	1.1.39	1.1.40	1.1.41	1.1.42	1.1.43	1.1.44	1.1.45	1.1.46	1.1.47	1.1.48	1.1.49	1.1.50	1.1.51	1.1.52	1.1.53	1.1.54	1.1.55	1.1.56	1.1.57	1.1.58	1.1.59	1.1.60	1.1.61	1.1.62	1.1.63	1.1.64	1.1.65	1.1.66	1.1.67	1.1.68	1.1.69	1.1.70	1.1.71	1.1.72	1.1.73	1.1.74	1.1.75	1.1.76	1.1.77	1.1.78	1.1.79	1.1.80	1.1.81	1.1.82	1.1.83	1.1.84	1.1.85	1.1.86	1.1.87	1.1.88	1.1.89	1.1.90	1.1.91	1.1.92	1.1.93	1.1.94	1.1.95	1.1.96	1.1.97	1.1.98	1.1.99	1.1.100
-----	-------	-------	-------	-------	-------	-------	-------	-------	-------	--------	--------	--------	--------	--------	--------	--------	--------	--------	--------	--------	--------	--------	--------	--------	--------	--------	--------	--------	--------	--------	--------	--------	--------	--------	--------	--------	--------	--------	--------	--------	--------	--------	--------	--------	--------	--------	--------	--------	--------	--------	--------	--------	--------	--------	--------	--------	--------	--------	--------	--------	--------	--------	--------	--------	--------	--------	--------	--------	--------	--------	--------	--------	--------	--------	--------	--------	--------	--------	--------	--------	--------	--------	--------	--------	--------	--------	--------	--------	--------	--------	--------	--------	--------	--------	--------	--------	--------	--------	--------	---------

# INDEX

NUMERICAL INDEX

PART NO.	REF. NO.	PART NO.	REF. NO.
4V6-W0001-00	33-32	4V6-11637-00	33-17
2K7-W0003-00	33-44	4V6-11638-00	2- 1
4V5-W1441-00	4-11		33-22
3R4-W1442-01	4-14	3R5-11650-00	33-26
3R5-W1512-00	7- 9	3R5-11651-00	2-10
4V5-W2473-10	22- 1		33-27
3R5-11111-00	1- 1	3R5-11681-00	2- 9
2N6-11127-00	1-13		33-28
4V5-11161-00	1-14	3R4-13565-00	4- 7
4V6-11181-00	1- 2	3R5-13610-00	4- 1
	33-33	3R5-13613-00	4- 2
4V5-1131E-00	1-15	2X5-13616-00	4- 3
4V6-11311-00	1- 6	2K7-13621-00	4- 6
3R5-11351-00	1- 7		33-35
	33-34	4V6-14101-00	5- 1
4V6-11400-00	2- 6	2X8-14112-25	5-27
4V6-11412-00	2- 7	510-14115-00	5-31
4V6-11422-00	2- 8	239-14116-36	5-33
4V6-11610-00	2- 2	2A0-14122-00	5-25
	33- 3	1W3-14123-00	5-23
4V6-11610-10	2- 2	363-14131-00	5-17
	33- 8	137-14133-00	5-22
4V6-11610-20	2- 2	256-14135-00	5-37
	33-13	509-14136-00	5-35
4V6-11610-30	2- 2	164-14137-00	5-34
	33-18	363-14137-00	5-21
4V6-11610-40	2- 2	737-14137-00	5-40
	33-23	510-14141-52	5- 5
4V6-11630-00	33- 1	193-14142-35	5- 4
4V6-11630-10	33- 6	137-14143-70	5- 6
4V6-11630-20	33-11	137-14143-72	5- 6
4V6-11630-30	33-16	137-14143-74	5- 6
4V6-11630-40	33-21	3R4-14146-00	5-29
4V6-11631-00-94	2- 1	558-14147-00	5-32
	33- 2	8F2-14147-00	5-18
4V6-11631-00-96	2- 1	2X8-14153-00	5-30
	33- 2	3R4-14155-00	5-20
275-11633-00	2- 3	3R4-14158-00	5-24
	33- 4	127-14161-00	5-19
	33- 9	802-14161-00	5-26
	33-14	1W1-14171-00	5-36
	33-19	2X7-14173-00	5-41
	33-24	802-14174-00	5-38
4V6-11635-00	2- 1	1W3-14175-00	5-43
	33- 7	1W3-14178-00	5-42
4V6-11636-00	2- 1	3R4-14181-16	5- 2
	33-12	363-14184-00	5- 3
4V6-11637-00	2- 1		33-36

PART NO.	REF. NO.	PART NO.	REF. NO.
2N7-14185-00	5- 7	2K7-16154-00	10-15
537-14186-00	5- 9	2K7-16181-00	10-14
363-14190-35	5- 8	3R5-16300-00	10- 6
239-14195-00	5-10	3B3-16321-00	10-11
2K7-14197-00	5-11	168-16325-00	10-10
310-14197-00	5-14	1M1-16351-00	10- 9
737-14241-00	5-39	3R4-16356-00	10-18
509-14274-00	5-28	3R5-16357-00	10-24
4V5-14412-00	4-18	3R4-16371-00	10- 8
4V5-14452-01	4-19	4V4-16380-00	10-29
4V5-14455-00	4-20	3R5-17121-01	11- 9
1W4-14457-00	4-12	3R5-17131-01	11- 6
3R4-14458-00	4-15	4V6-17141-00	11- 3
4V4-14459-00	4-16	4V6-17151-00	11- 8
4V4-14484-00	4-24	4V6-17211-00	11-20
4V4-14499-00	4-25	4V6-17221-00	11-13
4V6-14610-00	6- 1	3R5-17231-02	11-18
3R4-14613-00	6- 2	4V6-17241-00	11-19
	33-37	4V6-17251-00	11-16
3R5-14619-00	1-12	4V6-17411-00	11- 1
1M1-14714-00	6- 9	3R5-17421-00	11-12
565-14747-00	6-16	1W4-17461-30	11-27
4V5-14752-00	6-12	1W4-17461-40	11-27
4V5-14753-00	6-11	1W4-17461-50	11-27
565-14771-00	6-20	3R4-18101-01	13- 1
3R4-14781-02	6- 4	4V4-18111-04	13- 2
3R5-15111-00	7- 1	1W6-18113-00	13- 6
3R4-15113-00	7-17	3R4-18140-00	12- 7
4V4-15118-00	7-15	3R8-18162-00	13- 3
1G8-15362-00	8-11	1W1-18177-00	12- 9
3R4-15381-00	7-13	3R4-18185-00	12- 2
3R4-15383-00	7- 6	3R5-18511-00	12-10
3R5-15411-00	8- 1	3R5-18512-00	12-11
3R4-15421-00	8- 4	3R5-18513-00	12-12
3R4-15431-01	8- 8	4V4-18531-00	12-14
4V4-15451-00	8- 2	4V4-18535-00	12-15
	33-38	3R5-18540-02	12- 1
3R4-15462-00	8- 9	3R4-18561-00	12- 3
	33-39	4V5-21110-00-33	14- 1
2K7-15618-00	9-17	288-21376-00	3-24
4V3-15620-00	9-11	3R4-2139W-00	14-23
4V3-15621-00	9-12	3R4-21415-00	14- 2
3R4-15641-00	9- 2	4V4-21425-00	14- 4
3R4-15651-00	9- 7	4V5-2147A-00-33	14-24
3R4-15660-00	9- 1	4V5-2147E-00-33	14-25
3R4-15664-00	9- 6	2K7-2148A-00	14-15
3R5-16111-00	10- 1	3R8-21511-11	15- 1
3R4-16150-00	10- 7	4V5-21610-10	15- 6

NUMERICAL INDEX

PART NO.	REF. NO.	PART NO.	REF. NO.
1M1-21621-00	15-14	4V5-23136-L0	20- 3
4V5-21629-00	15-10	4V5-23141-L0	20-16
4V5-21711-10-26	16- 1	4V5-23141-10	32- 2
4V5-21721-10-26	16- 7	4V5-23141-20	32- 2
2J5-21732-00	14-26	1W4-23142-L0	20-17
4V6-21737-00	16-12	3R4-23144-00	20- 8
565-21746-00	15-15	1W4-23145-L0	20- 5
4V6-22110-00-35	17- 1	4V2-23146-L0	20- 6
1W1-22128-00	18-32	3R4-23148-00	20- 9
3R4-22129-00	17- 7	1W4-23151-L0	20-14
3R4-22141-00	17-13	3R4-23153-00	20- 7
3R4-22147-00	17-30	4V2-23157-L0	20-15
431-22151-03	17-12	509-23158-L0	20-28
3R5-22153-00	17-17	509-23163-L0	20-27
4V4-22178-00	14-16	4V2-23167-L0	20-26
2X4-22179-00	17-16	4V5-23170-L0	20-13
4V4-22184-00	14-17	3R4-23173-L0	20-11
2X4-22199-00	17-18	3R4-23181-L0	20-30
4V5-22210-10	32- 1	1W1-23185-L0	20-23
4V5-22210-20	32- 1	509-23190-L0	20-24
4V6-22210-00	18- 1	3R4-23191-M0	20-19
4V6-22212-00	18-19	1W4-23192-L0	20-20
3R4-22213-00	18-17	4V2-23194-L0	20-38
3R4-22214-00	18-20	1W2-23318-00	19-20
1W1-22216-00	18- 3	4V5-23340-L0-33	20-18
3R4-22221-01	18-16	3R4-23389-00	19- 2
3R4-22223-00	18-22		20-25
3R4-22224-00	18-21	4V5-23389-00	20-39
3R4-22226-00	18-12	1W1-23416-00	19-18
3R4-22228-00	18-10	1E6-23434-00	19- 4
3R4-22261-00	18-34	3R4-23435-00-98	19- 1
4V4-22262-01	18-35	1E6-23441-00-98	19-14
4V5-22311-00	17-34	3R4-23442-00-98	19- 3
4V6-22401-00	18- 2	1W4-23489-L0	20-21
3R4-22409-00	18-11	4V5-24110-10	21- 1
4L0-22472-00	18- 8	1W1-24144-01	21- 3
3R4-22473-00	18- 7	3R3-24173-00	21-11
3R4-22475-00	18- 6	3R4-24181-00	21-29
3R4-22489-00	18- 5	431-24181-00	14-27
2W6-22493-00	18- 9		16- 6
3R4-22497-00	18-14	1W1-24182-01	21- 2
4V5-23101-L0	20- 1	1W1-24183-00	21-28
4V2-23110-L0	20-10	4V5-24240-09	21-30
1W4-23111-L1	20-22	4V5-24500-00	21-12
1W4-23114-L0	20-12	4X8-24515-00	21-20
1W4-23118-L0	20-40	4X8-24521-00	21-17
122-23119-01	20-37	4V5-24524-00	21-13
4V2-23125-L0	20- 4	4V5-24525-00	21-14
4V5-23126-L0	20- 2		
122-23129-00	20-29		

NUMERICAL INDEX

PART NO.	REF. NO.	PART NO.	REF. NO.
357-24529-10	21-15	4V4-26241-00	25- 2
4X8-24533-00	21-16	3R9-26242-00	25- 3
4X8-24535-00	21-19	4V4-26242-00	25-10
4X8-24565-00	21-18	322-26243-00	25- 4
1K7-24611-01	21-25	4V6-26243-00	25-11
1K7-24612-02	21-26	1W1-26249-00	25- 5
509-24724-00	22- 6	4V4-26249-00	25-12
1W1-24738-00	22- 4	4V6-2628E-00	25-16
1M1-24748-00	22- 3	4V4-2628F-00	25-17
4V5-24771-10	22- 2	4V4-2628G-00	25-21
4V5-24833-00	22-11	322-26281-00-98	25- 6
4V5-24850-00	22-10	4V4-26281-00	25-14
2W6-25104-01	23-24	322-26282-00-98	25- 7
1K7-25111-10-98	23- 1	4V4-26282-00	25-15
146-25116-00	23- 3	3R8-26287-00	25- 9
3R5-25121-01-98	23- 6	1W6-26311-01	25-32
3R5-25130-00	23- 7	4V4-26311-00	25-32
322-25151-00	23- 9	510-26329-00	25-33
4V5-25151-00	24-10	4V5-26335-00	25-34
3R5-25155-00	23-10	4V5-26341-00	25-36
3R5-25156-00	23-11	1E6-26342-00	25-35
137-25159-00	23-12		25-37
3R5-25161-00	23-15	156-26347-00	25-41
3R5-25163-00	23-17	4V5-27211-00	26- 6
3R5-25164-00	23-18	4V6-27231-00	26-15
4V5-25181-00	23-30	1W2-27237-00	24-15
1W2-25190-00	23-29	1W2-27239-00	26-20
4V6-25304-00	24-19	3R8-27242-00	26- 7
4V4-25311-00-98	24- 1	4V5-27286-00	26-12
4V4-25315-00	24- 3	4V5-27311-00-33	26- 1
4V4-25317-00	24- 2	4V4-27411-00	26-24
4V5-25321-01-98	24- 7		26-26
4V4-25330-00	24- 8	4V5-27412-00	26-25
148-25353-00	24-14	4V5-27422-00	26-27
431-25355-00	24-12	1W2-28100-10	22-15
148-25359-00	24-11	1W1-28135-10	22-16
4V4-25367-00	24-28	648-45533-00-03	17- 6
4V5-25381-00	24-34	104-81328-20	3-10
4V5-25388-00	24-31	110-81345-21	3-17
4V5-25389-00	24-30	1M2-82310-40	30- 1
2J5-25394-00	23-28	3R0-82370-20	30- 5
2X5-25394-00	24-23	8E7-82370-11	30- 5
3R6-25442-10-33	24-24	4V5-82520-00	31-19
3R6-25444-10-33	24-24	688-82535-00	25-13
3R6-25446-10-33	24-24	4V5-82590-00	30- 6
3R4-26111-00	25- 1	4V4-82911-00	31- 1
3R9-26141-00	25-22	4V4-82913-00	31- 2
3R9-26142-00	25-27		31-10

PART NO.	REF. NO.	PART NO.	REF. NO.
4V4-82921-00	31- 9	4V4-82921-00	31- 9
4V5-83505-F0	27- 1	4V5-83505-F0	27- 1
4V5-83505-60	27- 3	4V5-83505-60	27- 3
4V5-83513-00	27- 5	4V5-83513-00	27- 5
4V5-83519-00	27- 6	4V5-83519-00	27- 6
1E6-83524-60	27- 8	1E6-83524-60	27- 8
1M1-83526-00	27- 7	1M1-83526-00	27- 7
4V5-83550-00	27-13	4V5-83550-00	27-13
4V5-83578-00	27- 2	4V5-83578-00	27- 2
	27- 4		27- 4
4V5-83592-00	28-11	4V5-83592-00	28-11
3M2-83912-00	31- 3	3M2-83912-00	31- 3
3M2-83922-00	31-11	3M2-83922-00	31-11
256-83936-00	30- 8	256-83936-00	30- 8
437-83936-00	29- 5	437-83936-00	29- 5
	30- 7		30- 7
	31-18		31-18
437-83936-10	25-49	437-83936-10	25-49
3R4-83976-00	31-17	3R4-83976-00	31-17
4V5-84110-00	28- 1	4V5-84110-00	28- 1
4G2-84114-00	28- 2	4G2-84114-00	28- 2
4V5-84130-10	28- 4	4V5-84130-10	28- 4
802-84131-00	29- 4	802-84131-00	29- 4
4V5-84132-00	28- 5	4V5-84132-00	28- 5
4V5-84134-00	28- 8	4V5-84134-00	28- 8
4V5-84140-00	28- 3	4V5-84140-00	28- 3
4V5-84141-00	28-12	4V5-84141-00	28-12
4V5-84143-00	28- 9	4V5-84143-00	28- 9
122-84514-30	29- 2	122-84514-30	29- 2
4V5-84521-00	29- 3	4V5-84521-00	29- 3
4V5-84530-00	29- 1	4V5-84530-00	29- 1
849-84724-00	28- 6	849-84724-00	28- 6
4V6-85500-20	3- 1	4V6-85500-20	3- 1
3R5-85509-20	3- 3	3R5-85509-20	3- 3
3R5-85511-20	3- 4	3R5-85511-20	3- 4
3R5-85512-20	3- 5	3R5-85512-20	3- 5
4V6-85513-20	3- 6	4V6-85513-20	3- 6
4V6-85515-20	3- 9	4V6-85515-20	3- 9
1W2-85516-20	3- 8	1W2-85516-20	3- 8
3R5-85540-20	3-23	3R5-85540-20	3-23
3R5-85550-20	3- 2	3R5-85550-20	3- 2
4V6-85580-20	3- 7	4V6-85580-20	3- 7
90101-06278	23-13	90101-06278	23-13
90101-06291	24-13	90101-06291	24-13
90101-06304	22- 5	90101-06304	22- 5
90101-08428	26-28	90101-08428	26-28
90102-10006	26- 3	90102-10006	26- 3
90105-12096	26-31	90105-12096	26-31
90105-14136	19-13	90105-14136	19-13
90109-06410	31- 5	90109-06410	31- 5
	31-13		31-13

NUMERICAL INDEX

PART NO.	REF. NO.	PART NO.	REF. NO.	PART NO.	REF. NO.
90109-06551	6-24	90201-08114	6-18	90430-12038	7-20
90109-08397	20-31	90201-08544	20-35		33-42
90109-08512	6-19	90201-08638	14-22	90445-08577	10-30
90109-08599	17- 2	90201-12593	3-22	90445-09117	21-27
90109-10550	18-25	90201-12631	24-16	90445-11152	21-23
90110-08038	24-25	90201-13202	14-18	90460-43053	6-10
90116-08321	1- 4	90201-15234	9-15	90460-51109	4- 8
90116-12315	1- 8	90201-15785	23-31	90460-68120	4-10
90116-12316	1- 9	90201-17327	10-27	90462-05005	29- 6
90119-06022	21- 9	90201-17545	9- 8		30- 4
90123-08046	25-48	90201-20278	11-21	90462-14055	25-43
90149-06011	21-22	90201-20358	9- 4	90467-10008	21-24
90149-08143	10-20	90201-25287	11- 4	90467-20030	4-13
90159-06016	10-13		11-14	90468-12007	27- 9
90170-12067	3-20	90202-06010	21-22	90468-26048	9- 3
90170-16111	17-14	90206-14067	18-24	90480-12053	16-11
90170-18089	10- 4	90209-06187	15- 5		28-10
90170-20213	18-18	90209-10195	19- 6	90480-13197	4-21
90170-20255	10-17	90209-12143	19- 5	90480-22263	18-33
90171-14020	23-32	90209-20213	11-10	90501-10245	26-19
90175-06012	4-17	90209-22082	11- 7	90501-12081	9-14
90175-06013	26-21		11-17	90501-24408	10-12
90179-08148	25-38	90209-25085	2-12	90506-16036	23- 8
90179-08278	17- 3		33-29	90507-20002	24- 9
90179-08299	1- 5	90215-20125	10-16	90507-20030	6- 3
90179-12244	9-18	90215-21121	11-28	90507-29008	26- 2
90179-18332	24-37	90240-06006	23-19	90508-14423	10-28
90179-20255	11-29	90240-06040	26-16	90508-14429	26- 8
90179-25033	19-19	90240-08012	25-39	90508-20023	26-30
90185-08054	14-14	90240-12074	18-29	90508-20415	13- 4
		90243-08017	13- 5	90508-20425	23-22
90201-06042	13- 7	90280-03017	2-15	90508-26421	12- 8
90201-06067	15- 2	90282-04036	12- 5	90508-30422	9- 5
	15- 9	90282-07019	10- 2	90508-32374	13-12
	15-13	90338-07011	7-10	90508-32478	26-14
	17-38	90340-12059	7-19	90560-12171	13-11
	17-40	90380-12051	18-13	90560-15116	23- 2
	22-13	90380-16077	17-11	91316-06020	4- 9
90201-06407	21- 8	90386-22097	17- 8	91316-06025	8-10
90201-06571	16- 5	90387-07393	21- 7	91316-06045	7- 5
	16-10	90387-08258	6-17	91316-06050	7- 4
90201-06709	1-18	90387-16776	7- 8	91316-06060	7- 3
90201-08083	25-40		7-12	91316-06075	7- 2
	31- 4	90387-201E6	24-29	91401-16012	24-33
	31-12	90387-25663	11-26	91401-20012	23-21
90201-08092	10-22	90430-05009	25-20		25-42
90201-081A6	24-27	90430-06016	8-14		26-11
90201-08113	14-19		33-41		26-18



NUMERICAL INDEX

NUMERICAL INDEX

PART NO.	REF. NO.	PART NO.	REF. NO.	PART NO.	REF. NO.	PART NO.	REF. NO.	PART NO.	REF. NO.	PART NO.	REF. NO.
91401-20025	18-28 26- 5	92901-06100	27-11 30- 3	92906-05100	31-16	93440-25084	11- 5	95811-08080	14- 3		
91401-25022	24-17	92901-06200	23-20	92906-06100	8- 6		11-15	95811-08170	14-12		
91401-30022	18-31		25-25	92906-06600	15- 8	93440-50078	18-23	95811-10055	14- 9		
91401-30030	23-33		25-30	93101-12004	8- 7	93450-19052	2- 4	95821-08035	19-15		
91402-20018	19- 9		26-17		13- 9		33- 5	95821-08040	19-10		
91701-05055	24-32	92901-06600	3-19	93102-17004	33-49		33-10	95821-08055	19-11		
91701-06028	26- 9		6-15		10-26		33-15	97301-06012	1-16		
91810-05016	7-11		6-23	93102-28022	33-47		33-20		21- 4		
91810-17016	1-11		17-24	93102-32136	24- 6		33-25	97301-06015	15-11		
92501-06010	7-16		17-37		11-25	93507-32009	9-13		22- 7		
92501-06012	6-13		21- 6	93103-30092	33-48	93515-32029	10-19	97301-06016	4-22		
	7-14		25-24		2-14	93604-26132	18-15		6-21		
	7-18		25-29	93103-40091	33-45	93606-14154	12-13	97301-06020	17-41		
92501-06015	16- 3		25-47		2-17	93608-25150	13-10		26-22		
	16- 8		26-10	93108-35004	33-46	94130-21654	23-25	97301-06050	17-25		
	25-23		27-12	93109-20014	17- 9	94156-17675	24-20	97301-08016	6- 6		
	25-28	92901-08100	6- 7		9-10	94230-21126	23-26		17-19		
92501-06020	3-18		10-21	93109-22018	33-50	94256-17180	24-21	97301-08035	17-27		
	17-22		14- 6	93210-14104	17-10	94330-21088	23-27	97301-08055	14-20		
	17-35		17-20		8-12	94332-17112	24-22	97302-06020	15- 3		
	22-12		17-28	93210-29282	33-40	94416-21234	23-23	97306-06016	15- 7		
92501-06025	25-44		20-34		10- 5	94425-17281	24-18	97321-06012	27-10		
	30- 2	92901-08200	6- 5	93306-00406	33-43	94585-20108	24-38	97321-06020	13- 8		
92502-06016	18-36		14-13	93306-00418	24- 5	94685-20001	24-39	97321-08025	14- 5		
92506-06008	8-13	92901-08600	6- 8	93306-00422	24- 4	95301-05600	19-23	97602-03108	5-15		
92506-06025	8- 5		14- 7	93306-20107	12- 4	95301-06600	23-14	98501-03008	4- 4		
92506-06035	8- 3		17-21	93306-20203	12-16		25-46	98501-04005	18- 4		
92701-06012	7- 7		17-29	93306-20205	23- 4	95301-06700	23-16	98501-04014	3-15		
92901-03100	4- 5	92901-10100	19- 7	93306-20205	23- 5		25-26	98501-04030	3-13		
92901-04100	3-12	92901-10200	14-10	93306-20544	11- 2		25-31	98501-04035	3-11		
	3-14	92901-12100	3-21	93306-30615	11-24		26-23	98501-05010	17-31		
	3-16	92901-12600	18-30		2-13	95302-10700	18-26	98501-05016	5-12		
92901-04600	28- 7	92901-16100	17-15	93310-418E9	2-16		19- 8		25- 8		
92901-05100	17-32	92901-18100	10- 3		2- 5	95302-10900	26- 4		25-19		
92901-05200	17-33		24-35	93310-42541	33-31	95311-06600	20-33	98501-05018	19-21		
92901-05600	19-22	92901-20600	24-36		2-11	95311-08600	20-32	98506-05020	31- 7		
92901-06100	1-17	92902-03600	5-16	93311-62035	33-30	95311-08700	10-23		31-15		
	4-23	92902-05100	5-13		11-11	95601-06100	17-39	98701-05016	12- 6		
	6-14	92902-06100	15- 4	93315-21721	11-23		31- 6	98902-06018	21-10		
	6-22		15-12	93317-22214	10-25		31-14	98906-05010	25-18		
	16- 4		18-37	93332-00001	17- 5	95601-08100	26-29		1- 3		
	16- 9		22- 8	93332-00008	19-16	95601-10100	14-11				
	17-23	92902-06600	18-38	93342-22208	19-17	95602-06100	22-14				
	17-36		22- 9	93410-17008	17- 4	95701-08100	19-12				
	17-42	92902-08200	16- 2	93410-20038	9- 9	95701-12100	1-10				
	20-36	92902-10600	18-27	93430-10015	11-22	95702-06300	17-26				
	21- 5	92906-05100	31- 8	93430-10016	26-13	95702-08300	14-21				
	25-45				9-16	95811-08075	14- 8				





## PARTS NAME INDEX

DESCRIPTION	REF. NO.
ABSORBER 1	1-14
ABSORBER 3	1-13
AIR CLEANER CASE COMP.	4-11
AIR VALVE COMP.	20-24
ARM, tensioner	17-16
AXLE, drive	11-12
AXLE, main (12T)	11- 1
AXLE, wheel	23-30
*	24-34
BALL	9-13
*	10-19
BAND	4-20
*	20-20
*	20-21
BAND, rim (3.00-21)	23-27
BAND, rim (3.25-17)	24-22
BAND, switch cord	25-49
*	29- 5
*	30- 7
*	30- 8
*	31-18
BAND, tank fitting 1	21-11
BAND, tool	3-24
BAR, shift fork guide 1	12-14
BAR, shift fork guide 2	12-15
BASE, magneto	3- 3
BEARING	11- 2
*	11-24
*	12- 4
*	17- 4
*	19-16
*	19-17
*	24- 4
BEARING (B6004Z)	24- 5
BEARING (B6201)	12-16
BEARING (B6202)	23- 5
BEARING (B6202RS)	23- 4
BEARING (B6306)	2-13
*	2-16
BEARING, cylindrical	2- 5
*	2-11
*	10-25
*	11-11
*	11-23
*	17- 5
*	33-30
*	33-31

## PARTS NAME INDEX

DESCRIPTION	REF. NO.
BODY ASSY, headlight	28- 4
BODY, cap	21-25
BODY, float chamber 1	5- 2
BOLT	1-16
*	4- 9
*	4-22
*	6- 6
*	6-19
*	6-21
*	6-24
*	7- 2
*	7- 3
*	7- 4
*	7- 5
*	8-10
*	13- 8
*	14- 5
*	14-20
*	15- 3
*	15- 7
*	15-11
*	17- 2
*	17-19
*	17-25
*	17-27
*	17-41
*	18-25
*	20-31
*	21- 4
*	22- 5
*	22- 7
*	23-13
*	24-13
*	25-48
*	26-22
*	26-28
*	27-10
*	31- 5
*	31-13
BOLT, cap	20-22
BOLT, flange	14- 3
*	14- 8
*	14- 9
*	14-12
*	19-10
*	19-11
*	19-15
BOLT, hexagon socket head	20-30

## PARTS NAME INDEX

DESCRIPTION	REF. NO.
BOLT, hexagon socket head	24-25
BOLT, stopper	12- 9
BOLT, stud	1- 4
*	1- 8
*	1- 9
BOLT, washer based	19-13
*	26-31
BOLT, with hole	26- 3
BOLT, with washer	21- 9
BOOT	20-19
BOOT, cable	25-35
*	25-37
BOSS, clutch	10- 8
BOSS, kick crank	9-12
BRACKET, carrier 2	22-11
BRACKET, footrest 1	26-25
BRACKET, footrest 2	26-27
BRACKET, front upper 1	14- 2
BRACKET, meter	27- 6
BRACKET, rear upper 1	14- 4
BRACKET, seat	22- 3
*	22- 4
BRAKE SHOE COMP.	23- 7
*	24- 8
BULB (6V-17/5.3W)	29- 2
BULB, headlight	28- 2
BUMPER, stop	18- 9
BUSH	5-39
*	14-17
*	17- 8
BUSH, rear shock absorber	18- 3
BUSH, shock absorber lower	18-12
BUSH, solid	17-11
*	18-13
C.D.I. MAGNETO ASSY	3- 1
C.D.I. UNIT ASSY	3-23
CABLE, brake	25-36
CABLE, clutch	25-34
CABLE, throttle 1	25-32
*	25-32
CAMSHAFT	23- 9
*	24-10
CAP, case	18- 8
CAP, cleaner case 1	4-18
CAP, front fork	20-23
CAP, gear	25-17
CAP, grip lower	25- 7
*	25-15

## PARTS NAME INDEX

DESCRIPTION	REF. NO.
CAP, GriP uPPer	25- 6
*	25-14
CAP, Plunger	5-38
CAP, rubber	25-33
CARBURETOR ASSY 1	5- 1
CARRIER BOX ASSY	22-10
CASE, chain	17-34
CHAIN, drive (DID520DS 108L)	24-38
CIRCLIP	2- 4
*	9- 9
*	9-16
*	11- 5
*	11-15
*	11-22
*	18-23
*	26-13
*	33- 5
*	33-10
*	33-15
*	33-20
*	33-25
CLAMP	3-10
*	25-43
*	29- 6
*	30- 4
CLAMP, hose	4- 8
*	4-10
*	6-10
CLIP	4-13
*	5-21
*	5-34
*	5-40
*	9- 3
*	21-24
*	27- 9
CLUTCH ASSY	10- 6
COIL, lighting 1	3- 6
COIL, Pulser	3- 7
COIL, source	3- 4
*	3- 5
COLLAR	6-17
*	7- 8
*	7-12
*	11-26
*	21- 7
*	24-29
CONNECTING ROD ASSY	33-26
CONNECTOR	5-28

## PARTS NAME INDEX

DESCRIPTION	REF. NO.
COVER	14-23
*	18-16
COVER, ball race 2	19-18
COVER, caP GriP	25- 9
COVER, crankcase 1	8- 1
COVER, crankcase 2	8- 4
COVER, crankcase 3	8- 8
COVER, dust	26-12
COVER, dust seal	20- 9
COVER, hub dust	24-28
COVER, kick lever	9-17
COVER, Plunger caP	5-41
COVER, semi-double seat	22- 2
COVER, shift Pedal	13- 6
COVER, side (L.H)	16- 1
COVER, side (R.H)	16- 7
COVER, thrust 1	18-32
COVER, thrust 2	17- 7
CRANK 1	2- 7
CRANK 2	2- 8
CRANKCASE 1	7- 1
CRANKCASE 2	7- 9
CRANKSHAFT ASSY	2- 6
CROWN, handle	19- 1
CUP, filter	21-17
CYLINDER COMP., front fork	20-13
CYLINDER 1	1- 6
DAMPER	27- 5
*	28-11
DAMPER 2	27- 7
DAMPER, headlight stay	28- 9
DAMPER, locating 1	14-27
*	16- 6
*	21-29
DAMPER, locating 2	21- 2
DAMPER, locating 3	21-28
DAMPER, muffler	6-16
DAMPER, seat	22- 6
DAMPER, sub tank	18-34
DUMPER SUB ASSY	18- 2
ELEMENT, air cleaner	4-14
EMBLEM	16-12
EMBLEM, headlight	28-12
END, rod 1	23-17
END, rod 2	23-18
EXHAUST PIPE ASSY 1	6- 1
FENDER, front	15- 1
FLANGE, sPacer	24- 3
FLANGE, sPacer 2	23- 3

## PARTS NAME INDEX

DESCRIPTION	REF. NO.
FLAP	15-14
FLOAT	5- 7
FOOTREST 1	26-24
*	26-26
FORK, shift 1	12-10
FORK, shift 2	12-11
FORK, shift 3	12-12
FRAME COMP	14- 1
FRONT FORK ASSY	20- 1
FUEL COCK ASSY 1	21-12
FUEL TANK COMP.	21- 1
GASKET	7-20
*	8-14
*	20-12
*	20-28
*	21-18
*	25-20
*	33-41
*	33-42
GASKET KIT	33-32
GASKET, caP	21-26
GASKET, crankcase cover	8- 2
*	33-38
GASKET, crankcase cover 3	8- 9
*	33-39
GASKET, cylinder	1- 7
*	33-34
GASKET, cylinder head 1	1- 2
*	33-33
GASKET, drain Plug	20-29
GASKET, exhaust Pipe	6- 2
*	33-37
GASKET, float chamber	5- 3
*	33-36
GASKET, muffler	6- 9
GASKET, valve seat	4- 6
*	33-35
GEAR UNIT ASSY	23-29
GEAR, bevel	25-16
GEAR, kick (26T)	9- 2
GEAR, Primary drive (24T)	10- 1
GEAR, sPcket idle (21T)	9- 7
GEAR, 1st wheel (32T)	11-20
GEAR, 2nd Pinion (16T)	11- 9
GEAR, 2nd wheel (28T)	11-13
GEAR, 3rd Pinion (19T)	11- 6
GEAR, 3rd wheel (25T)	11-18
GEAR, 4th Pinion (22T)	11- 3

## PARTS NAME INDEX

DESCRIPTION	REF. NO.
GEAR, 4th wheel (22T) .....	11-19
GEAR, 5th Pinion (28T) .....	11- 8
GEAR, 5th wheel (22T) .....	11-16
GRAPHIC SET .....	21-30
GRIP (L.H) .....	25- 2
GRIP (R.H) .....	25- 3
* .....	25-10
GROMMET .....	4-21
* .....	16-11
* .....	18-33
* .....	25-13
* .....	28-10
GUARD, brush 1 .....	25-22
GUARD, brush 2 .....	25-27
GUARD, chain .....	17-17
GUARD, engine 1 .....	14-24
GUARD, engine 2 .....	14-25
GUARD, mud .....	15-10
GUIDE .....	4-15
GUIDE, cable .....	5-20
* .....	19- 2
* .....	20-25
* .....	20-39
GUIDE, sPring .....	9- 6
GUIDE, sPring 1 .....	18-20
GUIDE, sPring 2 .....	18-21
HANDLEBAR .....	25- 1
HEAD, cylinder 1 .....	1- 1
HEADLIGHT UNIT ASSY .....	28- 1
HOLDER .....	7-15
HOLDER 1 .....	1-15
HOLDER, axle .....	20-26
HOLDER, cable 1 .....	19-20
HOLDER, damPer .....	19- 4
* .....	21- 3
HOLDER, guide .....	4-16
HOLDER, handle lower .....	19- 3
HOLDER, handle uPPer .....	19-14
HOLDER, lever lower 1 .....	31- 2
* .....	31-10
HOLDER, lever 1 .....	31- 1
HOLDER, lever 2 .....	31- 9
HOLDER, sub tank .....	18-35
HOOK, sPring .....	1-12
HOSE .....	10-30
* .....	21-23
* .....	21-27
* .....	18- 7
HOUSING, seal ring .....	18- 7

## PARTS NAME INDEX

DESCRIPTION	REF. NO.
HUB, front .....	23- 1
HUB, rear .....	24- 1
IGNITION COIL ASSY .....	30- 1
INNER TUBE COMP.1 .....	20-10
JET, main (#350) .....	5- 6
JET, main (#360) .....	5- 6
JET, main (#370) .....	5- 6
JET, Pilot (#35.0) .....	5- 4
JOINT, cable .....	25-41
JOINT, carburetor .....	4- 7
JOINT, chain .....	24-39
KEY, straight .....	10- 2
* .....	12- 5
KEY, woodruff .....	2-15
KICK AXLE ASSY .....	9- 1
KICK CRANK ASSY .....	9-11
KNOb, trip meter .....	27- 2
* .....	27- 4
LEAD WIRE ASSY .....	3- 9
LENS, taillight .....	29- 3
LEVER 1 .....	31- 3
LEVER 2 .....	31-11
LEVER, camshaft .....	24-12
LEVER, camshaft 1 .....	23-10
LEVER, camshaft 2 .....	23-11
LEVER, cock .....	21-13
LEVER, starter 1 .....	5-43
LIGHT SWITCH ASSY .....	31-19
METAL, slide 1 .....	20- 4
NEEDLE .....	5-33
NEEDLE VALVE ASSY .....	5- 8
NET, filter 2 .....	21-20
NOZZLE, main .....	5- 5
NUT .....	1- 5
* .....	3-20
* .....	9-18
* .....	10- 4
* .....	10-17
* .....	10-23
* .....	11-29
* .....	17- 3
* .....	17-14
* .....	18-18
* .....	18-26
* .....	19- 8
* .....	19-19
* .....	19-23
* .....	20-32

## PARTS NAME INDEX

DESCRIPTION	REF. NO.
NUT .....	20-33
* .....	23-14
* .....	23-16
* .....	24-37
* .....	25-26
* .....	25-31
* .....	25-38
* .....	25-46
* .....	26-23
NUT, adjust .....	28- 8
NUT, adjusting .....	18-14
NUT, cable adjusting .....	5-19
* .....	5-26
NUT, castle .....	23-32
NUT, flange .....	1-10
* .....	19-12
NUT, nylon .....	14-21
* .....	17-26
NUT, self-locking .....	14-14
* .....	24-26
NUT, slotted .....	26- 4
NUT, u .....	14-11
* .....	17-39
* .....	22-14
* .....	26-29
* .....	31- 6
* .....	31-14
NUT, wing .....	4-17
* .....	26-21
O-RING .....	5-18
* .....	5-32
* .....	8-12
* .....	10- 5
* .....	20-27
* .....	33-40
* .....	33-43
OIL SEAL .....	2-14
* .....	2-17
* .....	9-10
* .....	10-26
* .....	11-25
* .....	13- 9
* .....	17- 9
* .....	17-10
* .....	20- 5
* .....	24- 6
* .....	33-45
* .....	33-46
* .....	33-47

## PARTS NAME INDEX

DESCRIPTION	REF. NO.
OIL SEAL	33-48
*	33-49
*	33-50
OIL SEAL KIT	33-44
PACKING	25-21
PEDAL, brake	26- 6
*	26- 7
PEDAL, shift	13- 2
*	13- 3
PIN	13- 5
PIN, clevis	18-29
*	23-19
*	24-15
*	24-32
*	25-39
*	26- 9
*	26-16
PIN, cotter	18-28
*	18-31
*	19- 9
*	23-21
*	23-33
*	24-17
*	24-33
*	25-42
*	26- 5
*	26-11
*	26-18
PIN, crank 1	2- 9
*	33-28
PIN, dowel	1-11
*	7-11
*	12-13
*	13-10
*	18-15
PIN, float	5- 9
PIN, Piston	2- 3
*	33- 4
*	33- 9
*	33-14
*	33-19
*	33-24
PIPE	5-11
*	5-14
PIPE, outlet	6-12
PISTON (STD)	2- 1
*	2- 1
*	33- 2

## PARTS NAME INDEX

DESCRIPTION	REF. NO.
PISTON (STD)	33- 2
PISTON (1ST O/S 0.25MM)	2- 1
*	33- 7
PISTON (2ND O/S 0.50MM)	2- 1
*	33-12
PISTON (3RD O/S 0.75MM)	2- 1
*	33-17
PISTON (4TH O/S 1.00MM)	2- 1
*	33-22
PISTON ASSY (STD)	33- 1
PISTON ASSY (1ST O/S)	33- 6
PISTON ASSY (2ND O/S)	33-11
PISTON ASSY (3RD O/S)	33-16
PISTON ASSY (4TH O/S)	33-21
PISTON RING SET (STD)	2- 2
*	33- 3
PISTON RING SET (1ST O/S)	2- 2
*	33- 8
PISTON RING SET (2ND O/S)	2- 2
*	33-13
PISTON RING SET (3RD O/S)	2- 2
*	33-18
PISTON RING SET (4TH O/S)	2- 2
*	33-23
PLATE	5-29
*	7-17
PLATE, bearing cover	7- 6
*	7-13
PLATE, brake shoe	23- 6
*	24- 7
PLATE, cleaner case fitting	4-24
PLATE, clutch 2	10-10
PLATE, friction	10-11
PLATE, lever fitting	21-14
PLATE, Pressure 1	10- 9
PLATE, side 1	12- 3
PLATE, starter spring	5-42
PLATE, thrust 1	10-15
PLUG	7-10
PLUG CAP ASSY	30- 5
*	30- 5
PLUG, drain	20-37
PLUG, oil level	8-11
PLUG, screw	5-31
PLUG, spark (CHAMPION N3)	1- 3
PLUG, straight screw	7-19
PLUNGER, starter	5-36
PRIMARY DRIVEN GEAR COMP.(63T)	10- 7
PROTECTOR, chain	17-30

## PARTS NAME INDEX

DESCRIPTION	REF. NO.
PULLER, chain 1	24-31
PULLER, chain 2	24-30
PUSH LEVER ASSY	10-29
REAR ARM COMP.	17- 1
REAR FENDER COMP.	15- 6
REED VALVE ASSY	4- 1
REED, valve	4- 2
RIM (1.60-21)	23-23
RIM (2.50-17)	24-18
RING, leaf	25- 5
*	25-12
RING, Piston	20-15
RING, snap	20- 7
ROD, brake	26-15
ROD, connecting	2-10
*	23-15
*	33-27
ROD, Push	18- 5
ROD, Push 1	10-18
ROD, Push 2	10-24
ROTOR ASSY	3- 2
SCREW	10-20
*	21-22
SCREW, air adjusting	5-23
SCREW, bind	21-10
*	25-18
SCREW, boot band	20-38
SCREW, flat head	7- 7
*	12- 6
SCREW, lens fitting	28- 6
SCREW, lever fitting	21-19
SCREW, Pan head	3-11
*	3-13
*	3-15
*	3-17
*	3-18
*	4- 4
*	5-12
*	6-13
*	7-14
*	7-16
*	7-18
*	8- 3
*	8- 5
*	8-13
*	16- 3
*	16- 8
*	17-22
*	17-31

## PARTS NAME INDEX

DESCRIPTION	REF. NO.
SCREW, Pan head	17-35
*	18- 4
*	18-36
*	19-21
*	22-12
*	25- 8
*	25-19
*	25-23
*	25-28
*	25-44
*	30- 2
*	31- 7
*	31-15
SCREW, Pan head with washer	5-15
SCREW, rim adjuster	29- 4
SCREW, throttle	5-25
SCREW, with washer	10-13
SEAL	4-12
*	4-19
SEAL 1	14-26
SEAL, camshaft	23-12
*	24-11
SEAL, cock	21-16
SEAL, dust	18- 6
*	20- 8
SEAL, Guard	17-12
SEAL, mud Guard	15-15
SEAT, sPring	5-35
*	26-20
SEAT, sPring lower	18-22
SEAT, sPring uPper	18-17
*	20-17
SEGMENT	12- 2
SEMI-DOUBLE SEAT ASSY	22- 1
SHAFT	14-15
SHAFT, pivot	17-13
SHIFT CAM ASSY	12- 1
SHIFT SHAFT ASSY	13- 1
SHIM (0.3T)	17- 6
SHIM, camshaft	24-14
SHOCK ABSORBER ASSY, rear	18- 1
SILENCER, exhaust	6-11
SOCKET ASSY	29- 1
SOCKET CORD ASSY	28- 3
SPACER	3- 8
*	13-11
*	20-40

## PARTS NAME INDEX

DESCRIPTION	REF. NO.
SPACER	23- 2
SPACER 1	10-14
SPACER, bead	23-28
*	24-23
SPACER, bearing	24- 2
SPANNER, sPecial	22-16
SPEEDOMETER CABLE ASSY	27-13
SPINDLE, taPer	20-11
SPOKE SET, front	23-24
SPOKE SET, rear	24-19
SPRING	18-19
*	21-15
*	32- 1
*	32- 1
SPRING, comPression	9-14
*	10-12
*	26-19
SPRING, front fork	20-16
SPRING, front fork(K1=0.277, K2=0.314)	32- 2
SPRING, front fork(K1=0.339, K2=0.385)	32- 2
SPRING, PlunGer	5-37
SPRING, rebound	20-14
SPRING, screw	28- 5
SPRING, tension	6- 3
*	23- 8
*	24- 9
*	26- 2
SPRING, throttle stoP	5-22
SPRING, throttle valve	5-17
SPRING, torsion	9- 5
*	10-28
*	12- 8
*	13- 4
*	13-12
*	23-22
*	26- 8
*	26-14
*	26-30
SPROCKET, drive (13T)	11-27
SPROCKET, drive (14T)	11-27
SPROCKET, drive (15T)	11-27
SPROCKET, driven (42T)	24-24
SPROCKET, driven (44T)	24-24
SPROCKET, driven (46T)	24-24
STAND, side	26- 1
STAY 2	4-25
STAY, muffler 1	6-20
STAY, muffler 2	6- 4
STOPPER LEVER ASSY	12- 7
STOPPER, reed valve	4- 3
SUPPORT, bump stoP	18-10

## PARTS NAME INDEX

DESCRIPTION	REF. NO.
SUPPORT, chain	17-18
SWITCH, handle 1	31-17
TENSIONER	14-16
TIRE (3.00-21)	23-25
TIRE (5.60-17)	24-20
TOOL KIT	22-15
TOP, mixing chamber	5-24
TRIP METER COMP.	27- 1
*	27- 3
TUBE (3.00-21)	23-26
TUBE (5.60-17)	24-21
TUBE, outer 1	20- 2
TUBE, outer 2	20- 3
TUBE, throttle Guide	25- 4
*	25-11
UNDER BRACKET COMP.	20-18
UPPER BRACKET SUB ASSY	18-11
VALVE, throttle 1	5-27
WASHER	2-12
*	5-16
*	11- 7
*	11-10
*	11-17
*	15- 5
*	16- 2
*	18-38
*	19- 5
*	19- 6
*	22- 9
*	24-36
*	33-29
WASHER, lock	10-16
*	11-28
WASHER, main Jet	5-30
WASHER, needle valve	5-10
WASHER, oil seal	20- 6
WASHER, Plain	6- 5
*	14-10
*	14-13
*	17-33
*	23-20
*	25-25
*	25-30
*	26-17
WASHER, Plate	1-18
*	3-19
*	3-22
*	6- 8

PARTS NAME INDEX

DESCRIPTION	REF. NO.
WASHER, Plate .....	6-15
*	6-18
*	6-23
*	8- 7
*	9- 4
*	9- 8
*	9-15
*	10-22
*	10-27
*	11- 4
*	11-14
*	11-21
*	13- 7
*	14- 7
*	14-18
*	14-19
*	14-22
*	15- 2
*	15- 9
*	15-13
*	16- 5
*	16-10
*	17-21
*	17-24
*	17-29
*	17-37
*	17-38
*	17-40
*	18-27
*	18-30
*	19-22
*	20-35
*	21- 6
*	21- 8
*	21-21
*	22-13
*	23-31
*	24-16
*	24-27
*	25-24
*	25-29
*	25-40
*	25-47
*	26-10
*	27-12
*	28- 7
*	31- 4
*	31-12
WASHER, sPecial .....	27- 8

PARTS NAME INDEX

DESCRIPTION	REF. NO.
WASHER, sPring .....	1-17
*	3-12
*	3-14
*	3-16
*	3-21
*	4- 5
*	4-23
*	5-13
*	6- 7
*	6-14
*	6-22
*	8- 6
*	10- 3
*	10-21
*	14- 6
*	15- 4
*	15- 8
*	15-12
*	16- 4
*	16- 9
*	17-15
*	17-20
*	17-23
*	17-28
*	17-32
*	17-36
*	17-42
*	18-37
*	19- 7
*	20-34
*	20-36
*	21- 5
*	22- 8
*	24-35
*	25-45
*	27-11
*	30- 3
*	31- 8
*	31-16
WASHER, wave .....	18-24
WIRE HARNESS ASSY .....	30- 6

PARTS NAME INDEX

DESCRIPTION	REF. NO.
-------------	----------

