



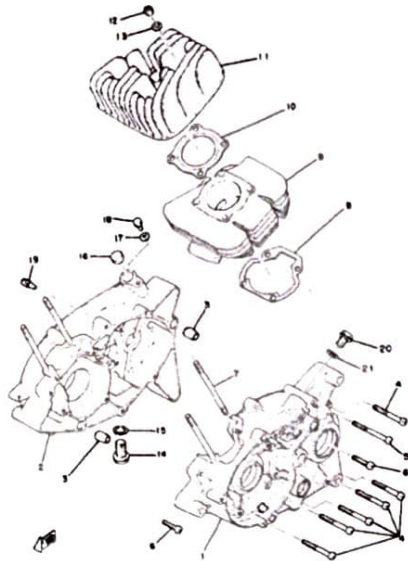
YAMAHA

GENUINE

PARTS CATALOGUE

MOTORCYCLE

www.legends-yamaha-enduros.com

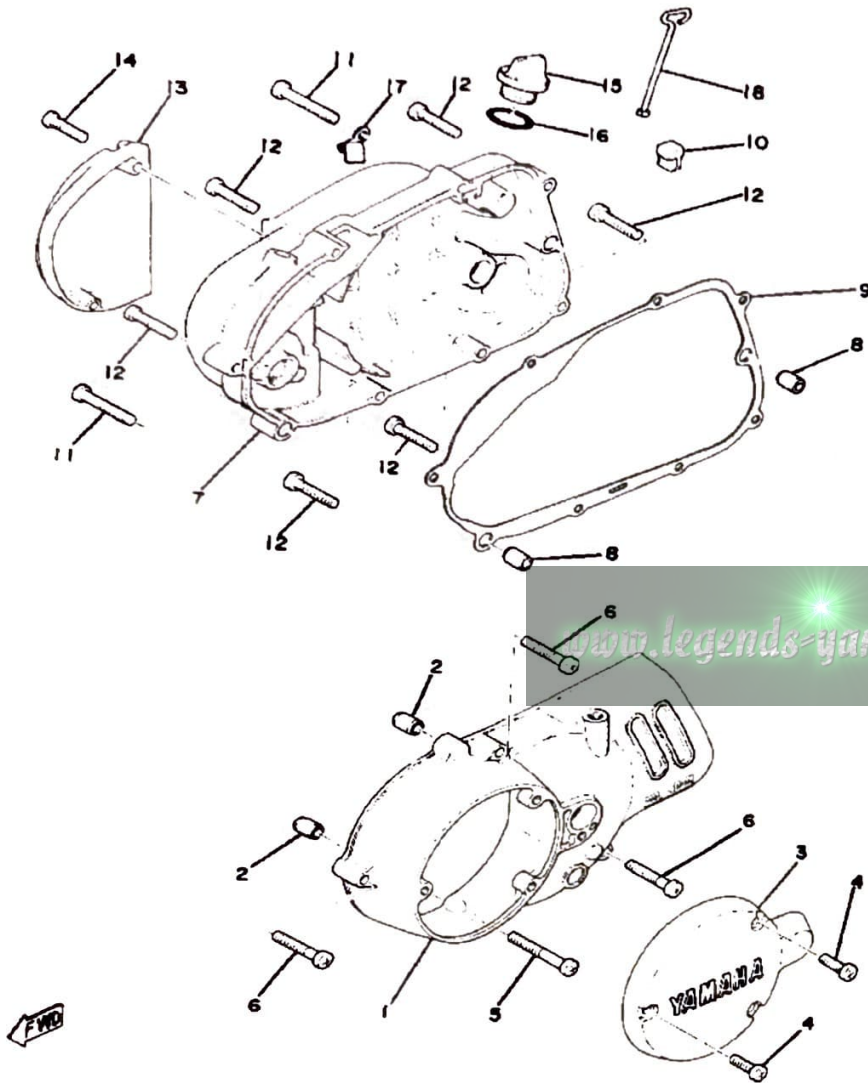


CRANKCASE - CYLINDER

Ref. No.	Part Number	Description	Qty	Remarks
1	(367-15111-01-98)	CRANKCASE 1	1	FROSTING BLACK
2	367-15121-07-00	CRANKCASE 2	1	FROSTING BLACK
3	99510-12016-00	PIN, DOWEL	2	
4	98580-06550-00	SCREW PAN HEAD (92503-06050)	8	
5	98580-06055-00	SCREW, pan head (92501-06065-00)	1	
6	98511-06025-00	SCREW PAN HEAD (92501-06025)	2	
7	90116-06026-00	BOLT, STUD	4	
8	367-11351-00-00	GASKET, CYLINDER	1	
9	367-11311-00-00	CYLINDER 1	1	
10	1F5-11181-00-00	GASKET, CYLINDER HEAD 1 ..	1	
11	367-11111-01-R4	HEAD, CYLINDER 1	1	HEAT PROOF BLK
12	95380-06600-00	NUT	4	
13	92990-06200-00	WASHER	4	
14	90340-12005-00	PLUG, DRAIN	1	
15	90430-12207-00	GASKET	1	
16	90338-16015-00	PLUG, BLIND (168-17481-00) ..	1	
17	92990-06200-00	WASHER	1	
18	97011-06010-00	BOLT	1	
19	492-15387-00-00	STOPPER	1	
20	90340-10003-00	PLUG, STRAIGHT SCRW	1	

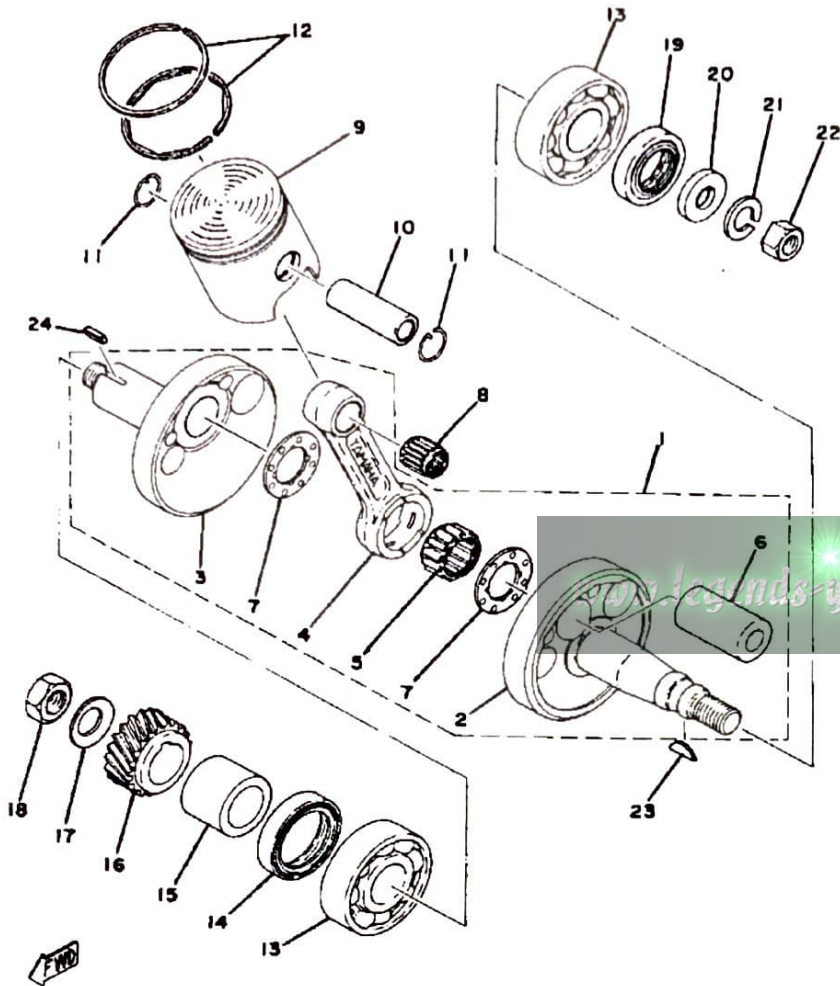
www.legends-yamaha-motor.com

CRANKCASE COVER



Ref. No.	Part Number	Description	Qty	Remarks
1	353-15411-00-98	COVER, CRANKCASE L	1	FROSTING BLACK
2	99530-10014-00	PIN, DOWEL	2	
3	353-15415-00-98	COVER, GENERATOR	1	FROSTING BLACK
4	98516-06020-00	SCREW, PAN HEAD	3	
5	98506-06045-00	SCREW, PAN HEAD	1	
6	98516-06030-00	SCREW, PAN HEAD	3	
7	353-15421-09-00	COVER, CRANKCASE R	1	FROSTING BLACK
8	99530-10014-00	PIN, DOWEL	2	
9	3MT-15451-00-00	GASKET, CRCS COVER (353-15451-00)	1	
10	353-15437-02-00	SCRAPER, OIL	1	
11	98506-06040-00	SCREW, PAN HEAD	2	
12	98516-06030-00	SCREW, PAN HEAD	7	
13	(353-15416-00-98)	COVER, OIL PUMP	1	FROSTING BLACK
14	98506-06025-00	SCREW, PAN HEAD	2	
15	1RG-15363-00-00	PLUG, OIL	1	
16	93210-21190-00	O-RING	1	
17	367-13174-00-00	HOLDER, OIL PIPE	1	
18	353-15361-00-00	GAUGE, LEVEL	1	

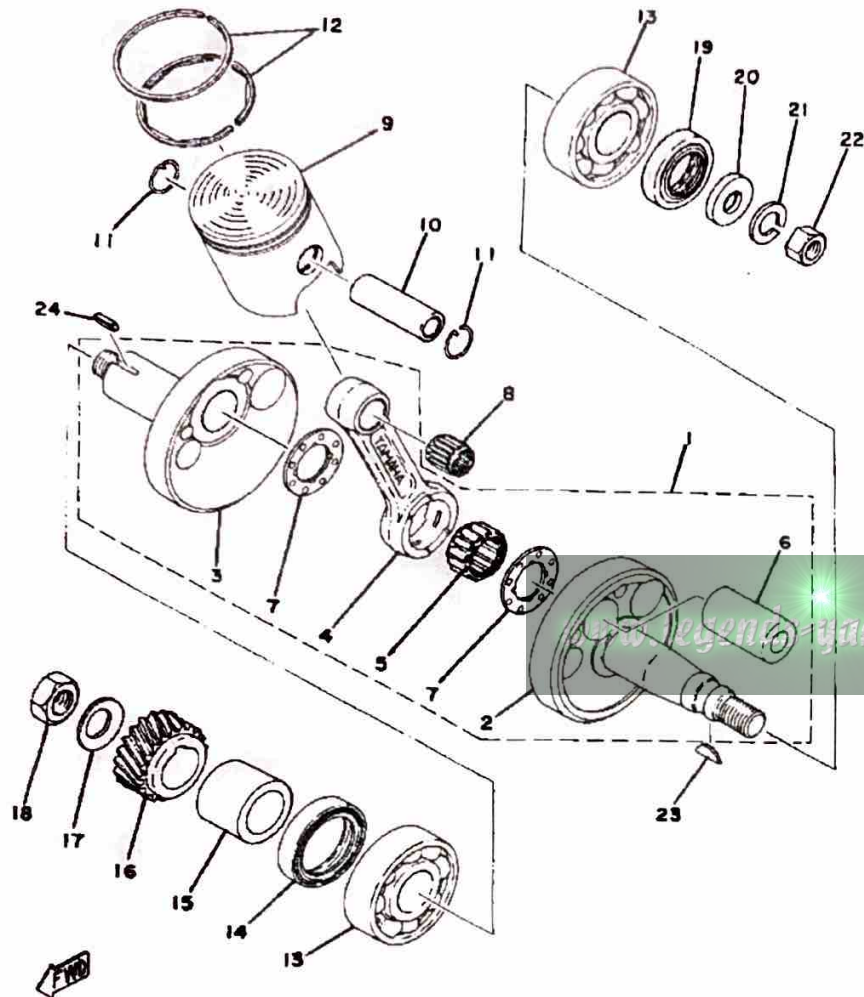
CRANKSHAFT - PISTON



Ref. No.	Part Number	Description	Qty	Remarks
1	1K9-11400-00-00	CRANKSHAFT ASSEMBLY ...	1	M7-031
2	598-11412-00-00	. CRANK 1	1	M7-031
3	(598-11422-00-00)	CRANK 2	1	M7-031
4	3R1-11651-01-00	. ROD, CONNECTING	1	
5	93310-418T0-00	. BERING, CYLINDRICAL	1	U.R.
6	257-11681-00-00	. PIN, CRANK 1	1	
7	90209-18112-00	. WASHER, SPEC"L SHAP ...	2	M7-031
8	93310-11268-00	BEARING	1	
9	367-11631-11-96	PISTON STD	1	
	367-11635-11-00	PISTON 1 O/S 0.5	1	ALTERNATE PART
	367-11636-11-00	PISTON 2 O/S 0.0	1	ALTERNATE PART
10	527-11633-00-00	PIN, PISTON	1	
11	93450-13022-00	CIRCLIP	2	
12	367-11610-00-00	PISTON RINGSET STD	1	
	367-11610-10-00	PISTON RINGSET 1ST	1	ALTERNATE PART
	367-11610-20-00	PISTON RINGSET 2ND	1	ALTERNATE PART
	367-11610-30-00	PISTON RINGSET 3RD	1	ALTERNATE PART
	367-11610-40-00	PISTON RINGSET 4TH	1	ALTERNATE PART
13	93306-20458-00	BEARING	2	
14	93103-28126-00	OIL SEAL	1	U.R.
15	90387-205E9-00	COLLAR	1	
16	353-16111-01-00	GEAR, PRI DRIVE	1	
17	90208-12015-00	WASHER, CONICAL SPRING ..	1	
18	90179-12244-00	NUT, SPEC"L SHAPE	1	
19	93102-20009-00	OIL SEAL	1	U.R.
20	90201-12535-00	WASHER, PLATE	1	
21	92901-12100-00	WASHER, SPRING	1	
22	90170-12175-00	NUT	1	
23	90280-03017-00	KEY, WOODRUFF	1	

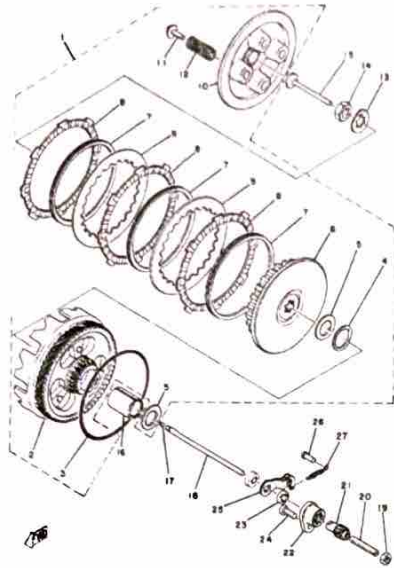
CONTINUED ON NEXT FRAME ►

CRANKSHAFT - PISTON



Ref. No.	Part Number	Description	Qty	Remarks
24	90282-05005-00	KEY, STRAIGHT	1	

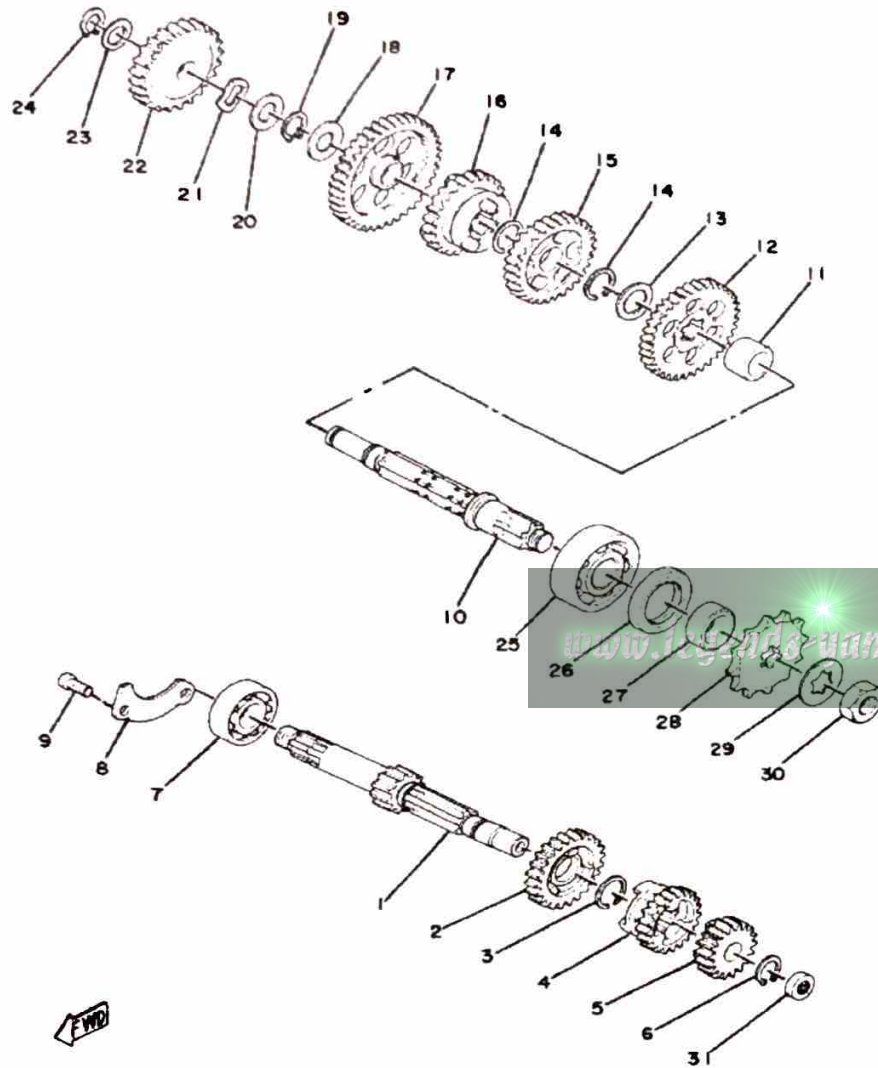
CLUTCH



Ref. No.	Part Number	Description	Qty	Remarks
1	(353-16301-01-00)	CLUTCH ASSEMBLY	1	
2	353-16150-02-00	. PRI DRVN GEAR	1	
3	93210-98202-00	. O-RING	1	
4	90201-23315-00	. WASHER, PLATE (116-16153-00)	1	
5	122-16164-00-00	. PLATE, THRUST 2	2	
6	353-16371-00-00	. BOSS, CLUTCH	1	
7	131-16367-00-00	. RING, CUSHION	3	
8	131-16321-00-00	. PLATE, FRICTION	3	
9	257-16324-00-00	. PLATE, CLUTCH 1	2	
10	353-16351-00-00	. PLATE, PRESSURE 1	1	
11	90119-05001-00	. BOLT, WITH WASHER	4	
12	90501-20125-00	. SPRING, COMPRESSION	4	
13	90208-12015-00	WASHER, CONICAL SPRING	1	
14	90170-12060-00	NUT	1	
15	137-16356-00-00	ROD, PUSH 1	1	
16	90560-17123-00	SPACER	1	
17	93503-16010-00	BALL	1	
18	353-16357-00-00	ROD, PUSH 2	1	
19	95380-06700-00	NUT	1	
20	90113-06013-00	BOLT, SET	1	
21	241-16341-01-00	SCREW, PUSH	1	
22	353-16396-00-00	HOUSING, PUSH SCREW	1	
23	93104-10085-00	OIL SEAL, SO-TYPE	1	
24	98503-06014-00	SCREW, PAN HEAD (92502-06016)	1	
25	451-16342-00-00	LEVER, PUSH	1	
26	132-16346-00-00	HOOK, SPRING	1	
27	90506-07066-00	SPRING, TENSION	1	

www.legends-yamaha-enthusiasts.com

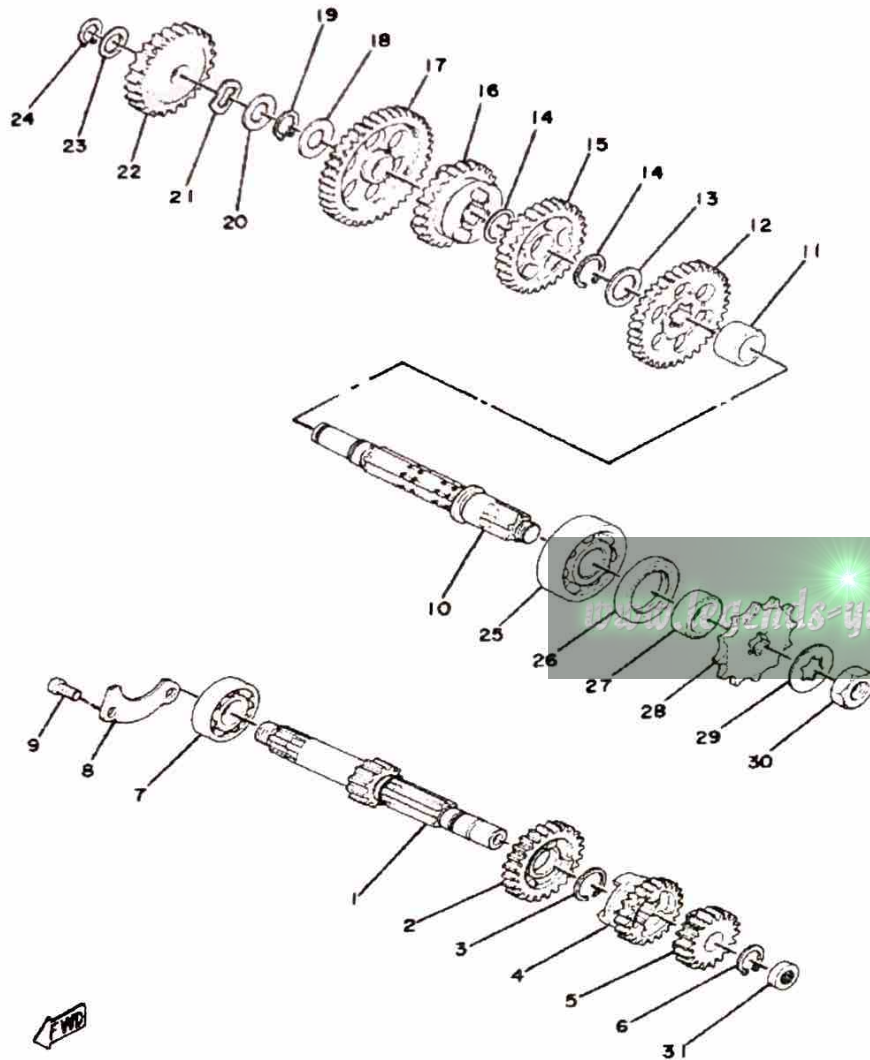
TRANSMISSION



Ref. No.	Part Number	Description	Qty	Remarks
1	353-17411-01-00	AXLE, MAIN	1	
2	353-17141-12-00	GEAR, 4TH PINION	1	
3	93440-16089-00	CIRCLIP	1	
4	353-17131-10-00	GEAR, 3RD PINION	1	
5	353-17121-11-00	GEAR, 2ND PINION	1	
6	99009-13400-00	CIRCLIP (55X)	1	
7	93306-20333-00	BEARING	1	
8	353-17471-00-00	PLATE, COVER	1	
9	98580-06012-00	SCREW, PAN HEAD	2	
10	598-17421-00-00	AXLE, DRIVE	1	
11	90387-16126-00	COLLAR	1	
12	353-17221-00-00	GEAR, 2ND WHEEL	1	
13	52G-17968-00-10	SHIM, (1.0T)	1	
14	93440-16089-00	CIRCLIP	2	
15	353-17231-00-00	GEAR, 3RD WHEEL	1	
16	353-17241-00-00	GEAR, 4TH WHEEL	1	
17	353-17211-01-00	GEAR, 1ST WHEEL	1	
18	257-17219-00-00	SHIM	1	
19	99009-12400-00	CIRCLIP	1	
20	90201-13202-00	WASHER, PLATE	1	
21	90206-15021-00	WASHER, WAVE	1	
22	353-15651-00-00	GEAR, KICK IDLE	1	
23	90201-12M34-00	WASHER, PLATE	1	
24	99009-13400-00	CIRCLIP (55X)	1	
25	93306-30302-00	BEARING	1	
26	93102-25017-00	OIL SEAL	1	
27	90387-17137-00	COLLAR	1	
28	93811-12009-00	SPROCKET, DRIVEN (257-17461-21)	1	U.R.

CONTINUED ON NEXT FRAME ►

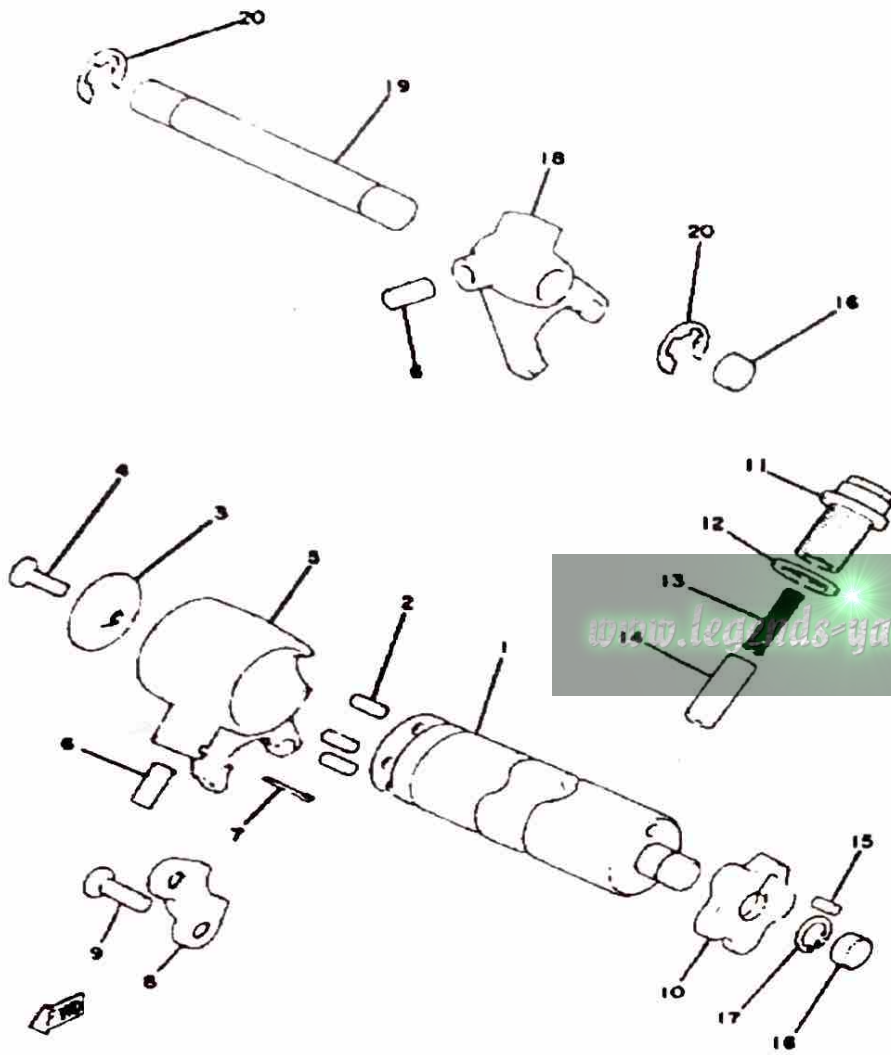
TRANSMISSION



Ref. No.	Part Number	Description	Qty	Remarks
28	93811-13020-00	SPROCKET, DRIVE (257-17461-31)	1	U.R.
	93811-14033-00	SPROCKET, DRIVE	1	U.R. STD
	93811-15060-00	SPROCKET, DRIVE (257-17461-51)	1	U.R.
29	90215-13019-00	WASHER, LOCK	1	
30	90179-12181-00	NUT, SPEC"L SHAPE	1	
31	93102-04382-00	OIL SEAL, SD-TYPE (257-153879-00)	1	

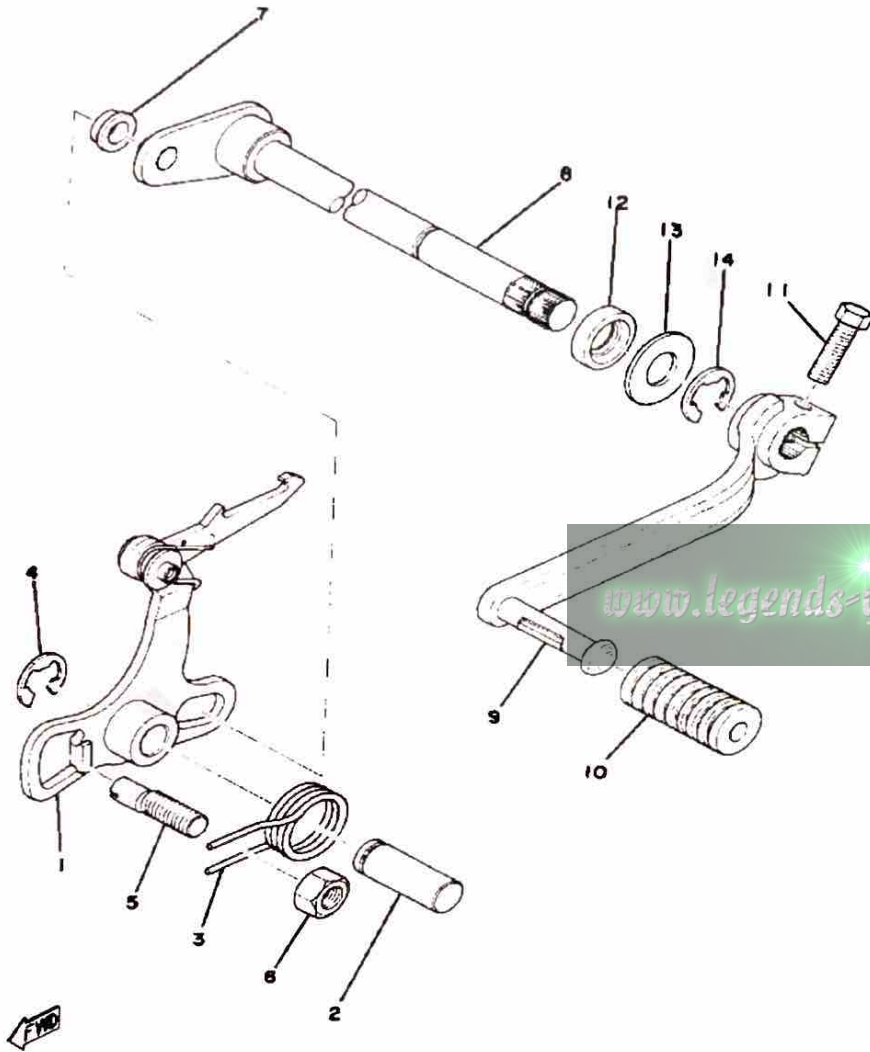
SHIFTER 1

Ref. No.	Part Number	Description	Qty	Remarks
1	367-18540-01-00	SHIFT CAM ASSEMBLY	1	
2	93604-10011-00	PIN, DOWEL	4	
3	214-18561-00-00	PLATE, SIDE 1	1	
4	98701-05012-00	SCREW, FLAT HEAD	1	
5	353-18511-01-00	FORK, SHIFT 1	1	
6	93606-14081-00	PIN, DOWEL	2	
7	91401-25020-00	PIN, COTTER	1	
8	353-18562-00-00	PLATE, STOPPER 2	1	
9	98603-06012-00	SCREW, OVAL HEAD (92701-06012)	2	
10	(374-18141-00-00)	PLATE, STOPPER	1	
11	90109-14485-00	BOLT	1	
12	137-15353-00-00	GASKET, DRAIN	1	
13	90501-09292-00	SPRING, COMPRESSION	1	
14	353-18547-00-00	STOPPER, CAM	1	
15	93604-08071-00	PIN, DOWEL	1	
16	90334-12009-00	PLUG, STRAIGHT	2	
17	93440-12026-00	CIRCLIP, OUTER	1	
18	353-18512-01-00	FORK, SHIFT 2	1	
19	214-18531-00-00	BAR, SHIFT FORK GUIDE 1 ...	1	
20	99006-10600-00	CIRCLIP	2	

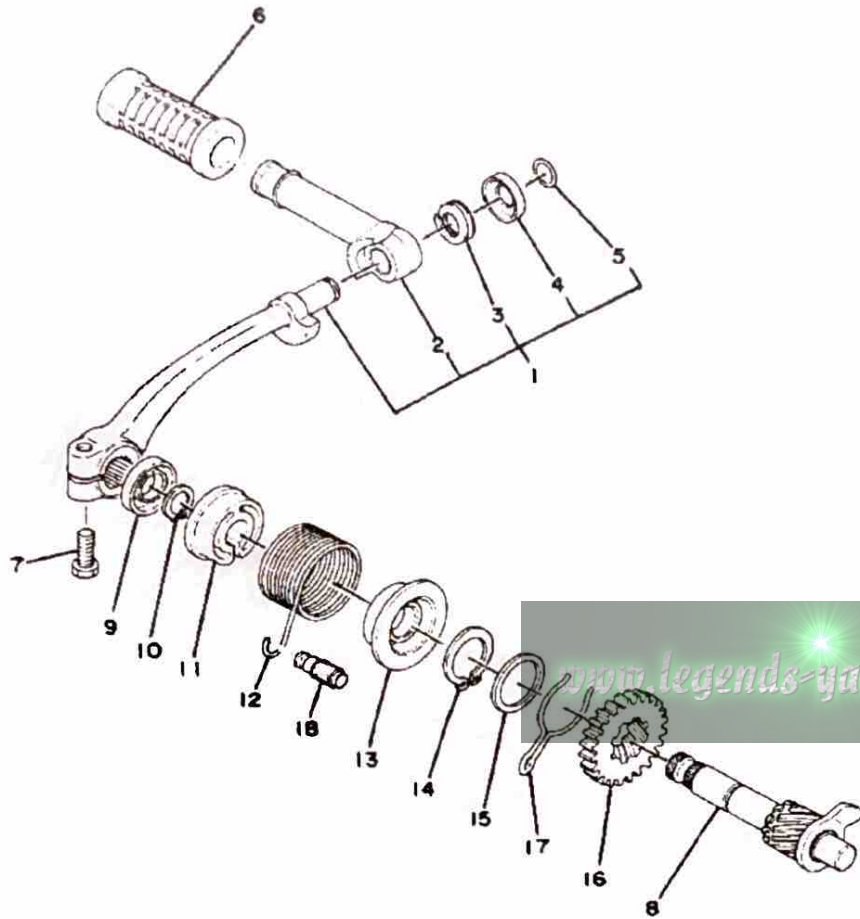


SHIFTER 2

Ref. No.	Part Number	Description	Qty	Remarks
1	353-18120-00-00	SHIFT LEVER ASSEMBLY	1	
2	367-18197-00-00	SHAFT	1	
3	90508-32054-00	SPRING, TORSION	1	
4	99006-10600-00	CIRCLIP	1	
5	90149-08094-00	SCREW	1	
6	95333-08600-00	NUT, HEXAGON	1	
7	214-18178-00-00	ROLLER, SHIFT LEVER	1	
8	353-18101-03-00	SHIFT SHAFT ASSEMBLY	1	
9	367-18111-00-00	PEDAL SHIFT	1	
10	132-18113-01-00	COVER, SHIFT PEDAL	1	
11	97011-06020-00	BOLT	1	
12	93102-12321-00	OIL SEAL, SD-TYPE	1	
13	90201-12575-00	WASHER, PLATE	1	
14	99006-10600-00	CIRCLIP	1	



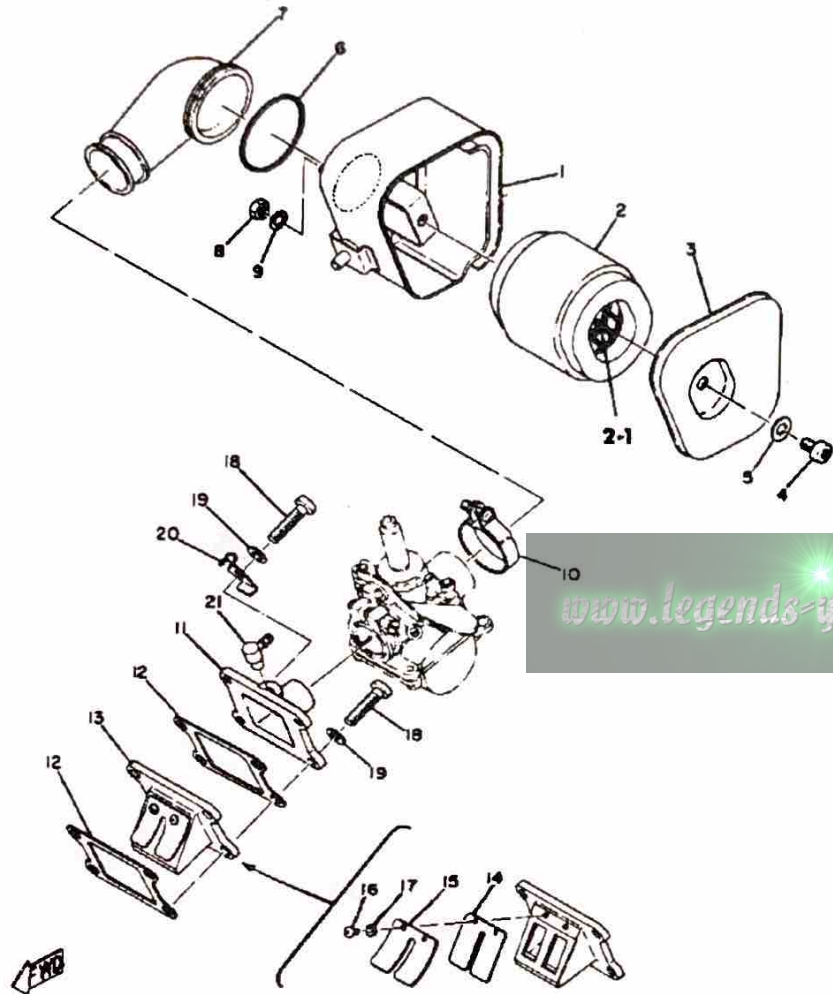
KICK - STARTER



Ref. No.	Part Number	Description	Qty	Remarks
1	3AY-15620-00-00	KICK CRANK ASSEMBLY	1	
2	(214-15612-09-00)	LEVER, KICK	1	
3	90504-18031-00	SPRING, COMPRESSION (132-15625-01)	1	
4	90209-10108-00	WASHER, SPEC'L SHAP	1	
5	93440-10028-00	CIRCLIP, OUTER (132-15617-00)	1	
6	156-15618-01-00	COVER, KICK LEVER	1	
7	97011-06025-00	BOLT (97001-06025)	1	
8	353-15660-01-00	KICK AXLE ASSEMBLY	1	
9	93109-15001-00	OIL SEAL	1	
10	99009-15400-00	CIRCLIP	1	
11	132-15676-01-00	COVER, SPRING	1	
12	90508-26136-00	SPRING, TORSION	1	
13	132-15664-01-00	GUIDE, SPRING	1	
14	93410-25017-00	CIRCLIP	1	
15	90201-253K0-00	WASHER, PLATE (T=1.0)	1	
16	353-15641-00-00	GEAR, KICK	1	
17	90468-26038-00	CLIP	1	
18	248-15668-00-00	STOPPER	1	

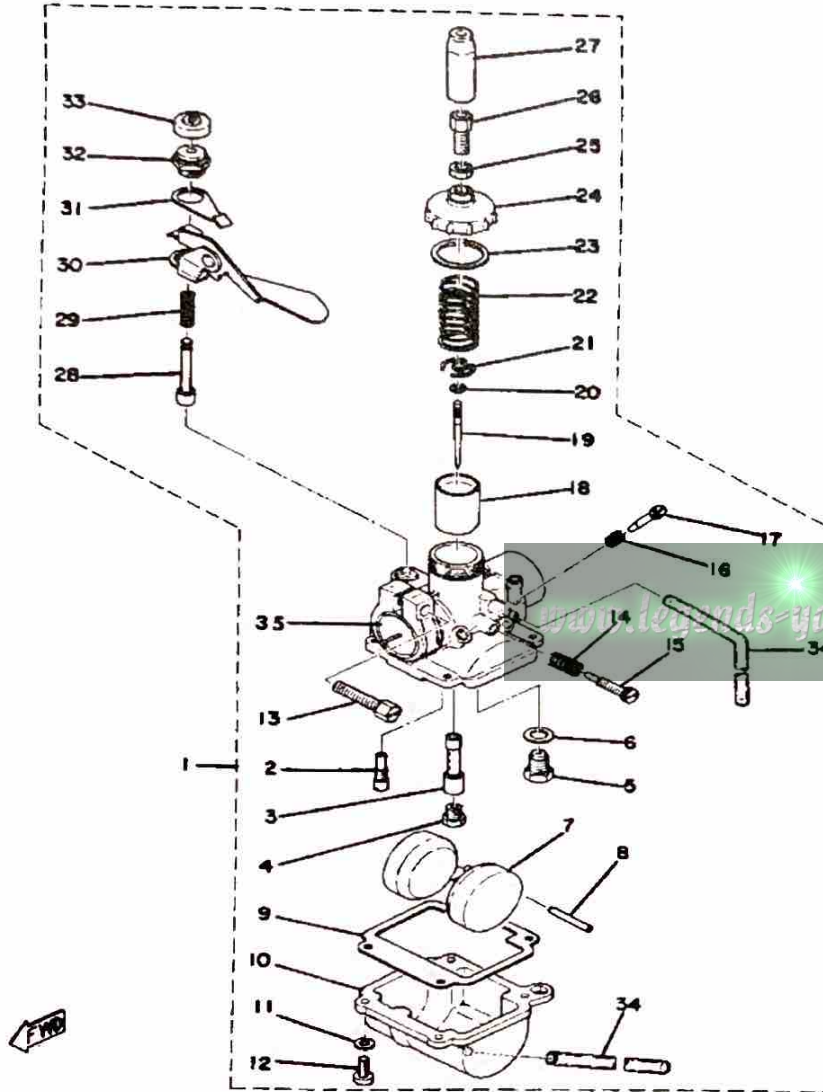


INTAKE



Ref. No.	Part Number	Description	Qty	Remarks
1	367-14411-00-00	CASE, AIR CLEANER 1	1	
2	367-14451-09-00	ELEMENT, AIR CLNR	1	
3	2A3-14412-00-00	CAP, CLEANER CASE 1	1	
4	98580-06010-00	SCREW, PAN HEAD (92503-06010)	1	
5	92990-06200-00	WASHER	1	
6	90506-06075-00	SPRING, TENSION	1	
7	367-14453-02-00	JOINT, AIR CLNR 1	1	
8	95380-06600-00	NUT	2	
9	92995-06100-00	WASHER, SPRING	2	
10	90460-33087-00	CLAMP, HOSE	1	
11	374-13565-00-00	JOINT, CARBURETOR (367-13565-00-98)	1	FROSTING BLACK
12	3MT-13621-00-00	GASKET, VALVE SEAT	2	
13	353-13610-01-00	REED VALVE ASSEMBLY	1	
14	314-13613-01-00	REED, VALVE	1	
15	314-13616-01-00	STOPPER, REED VALVE	1	
16	98580-03008-00	SCREW, PAN HEAD	2	
17	92990-03100-00	WASHER, SPRING (92901-03100)	2	
18	98511-06025-00	SCREW PAN HEAD (92501-06025)	4	
19	92995-06100-00	WASHER, SPRING	4	
20	(367-15378-00-00)	HOLDER	1	
21	278-13552-02-00	NOZZLE (278-13552-01) 0 1	1	

CARBURETOR

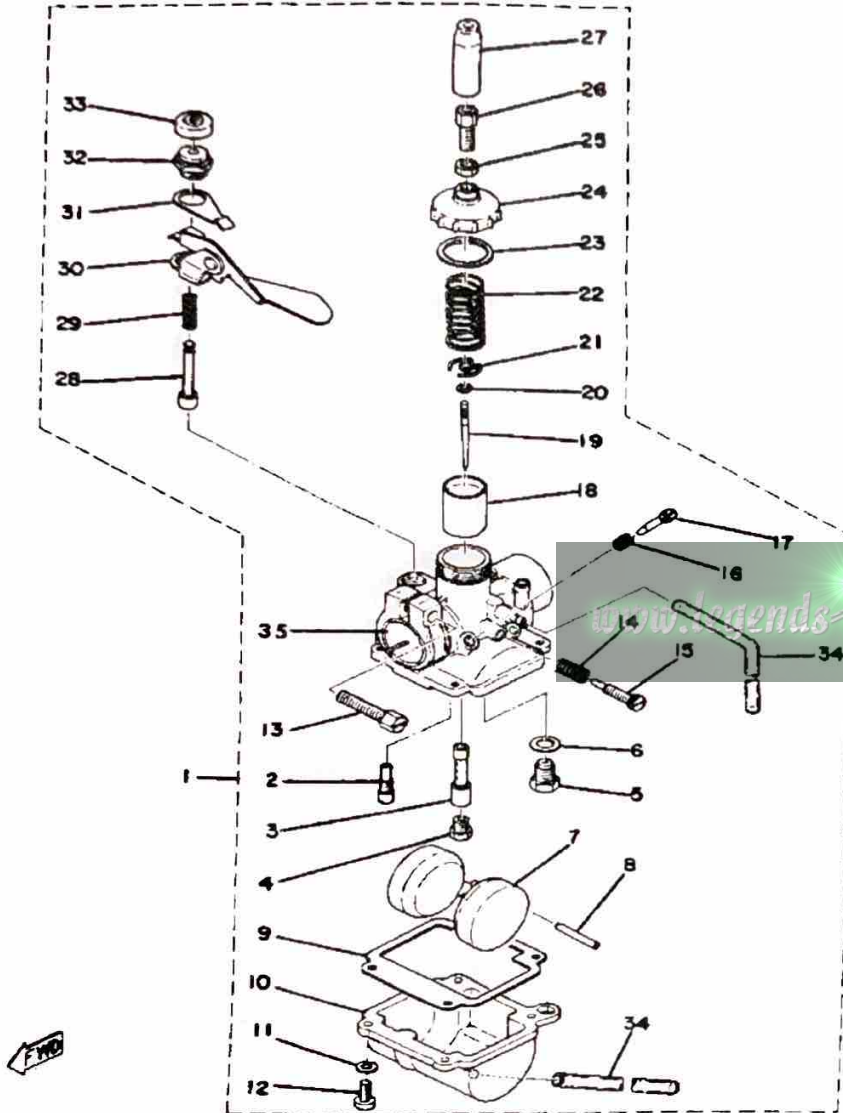


Ref. No.	Part Number	Description	Qty	Remarks
1	367-14301-61-00	CARBURETOR ASSEMBLY 1	1	YAMAHA BLACK
2	367-14342-17-00	. JET, PILOT # 4	1	
3	288-14341-03-00	. NOZZLE, MAIN	1	
4	288-14343-46-00	. JET, MAIN # 2	1	
	288-14343-47-00	. JET, MAIN # 4	1	U.R. STD
	288-14343-48-00	. JET, MAIN # 6	1	U.R.
5	367-14390-14-00	. NEEDLE VALVE ASSEMBLY	1	
6	367-14195-00-00	. GASKET	1	
7	367-14385-00-00	. FLOAT	1	
8	367-14386-00-00	. PIN, FLOAT	1	
9	4U1-14384-00-00	. GSKT, FLOAT CHAMBER	1	
10	(367-14381-00-33)	BODY, FLOAT CHAMBER	1	YAMAHA BLACK
11	92901-04100-00	. WASHER, SPRING	4	
12	98580-04010-00	. SCREW, PAN HEAD	4	
13	98511-06025-00	. SCREW PAN HEAD (92501-06025)	1	
14	646-14212-01-00	. SPRING, PILOT ADJUSTING	1	
15	646-14211-02-00	. SCREW, PILOT ADJUSTING	1	
16	367-14337-00-00	. SPRING, AIR ADJUST	1	
17	396-14323-00-00	. SCREW, AIR ADJUSTING	1	
18	367-14312-10-00	. VALVE, THROTTLE 1	1	
19	288-14336-03-00	. NEEDLE	1	
20	288-14137-00-00	. CLIP	1	
21	367-14136-02-00	. SEAT, SPRING (367-14136-00)	1	
22	367-14331-00-00	. SPRING, THRTL VALVE	1	
23	367-14126-00-00	. GASKET	1	
24	(367-14168-00-33)	CAP, MIXING CHAMBER	1	YAMAHA BLACK
25	288-14161-00-00	. NUT, CABLE ADJUSTING	1	
26	288-14124-00-00	. SCREW, CABLE ADJUSTING	1	

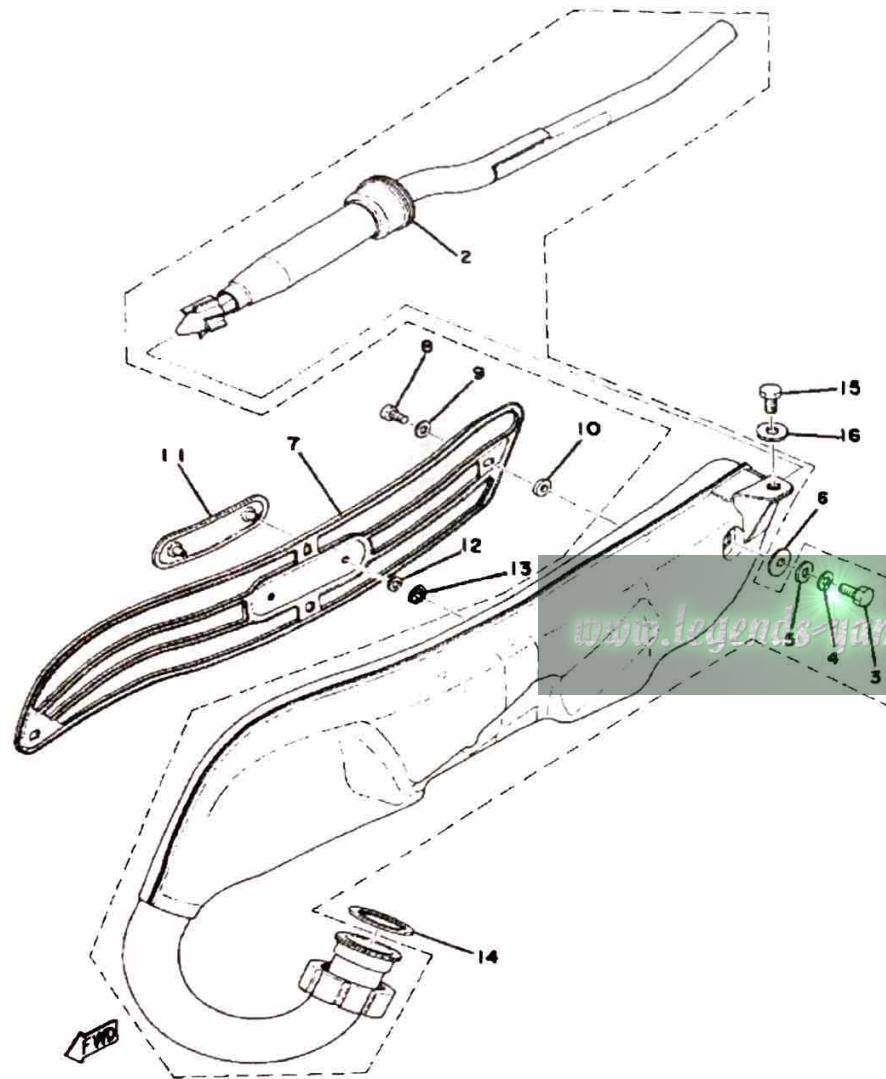
CONTINUED ON NEXT FRAME ►

CARBURETOR

Ref. No.	Part Number	Description	Qty	Remarks
27	367-14169-00-00	. CAP	1	
28	367-14371-00-00	. PLUNGER, STARTER	1	
29	367-14335-00-00	. SPRING, PLUNGER	1	
30	367-14375-01-00	. LEVER, STARTER	1	
31	367-14377-00-00	. STOPPER	1	
32	367-14374-00-00	. CAP, PLUNGER	1	
33	(367-14373-00-00)	COVER, PLUNGER CAP	1	
34	367-14396-00-00	. PIPE	2	
35	367-14156-00-00	. GASKET, INSULATING	1	

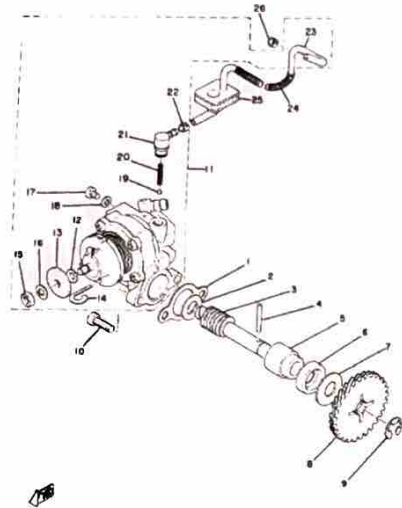


EXHAUST



Ref. No.	Part Number	Description	Qty	Remarks
1	367-14610-31-00	NO LONGER AVAILABLE	1	
2	367-14752-30-00	. PIPE, OUTLET	1	
3	97313-06016-00	. BOLT, HEXAGON	1	
4	92995-06100-00	. WASHER, SPRING	1	
5	90201-06M08-00	. WASHER, PLATE	1	
6	90430-05010-00	GASKET	1	
7	367-14718-30-00	PROTECTOR, MUFF 1	1	
8	98903-06010-00	SCREW, BIND	4	
9	90202-05187-00	WASHER, PLATE	4	
10	90202-05005-00	WASHER, PLATE (218-14766-10)	4	
11	367-14729-31-00	EMBLEM, PROTECTOR	1	
12	90202-04003-00	WASHER, PLATE	2	
13	90183-04005-00	NUT, SPRING	2	
14	132-14613-00-00	GASKET, EXST PIPE	1	
15	97313-08018-00	BOLT, HEXAGON (97301-08016)	1	
16	92990-08200-00	WASHER, PLAIN	1	

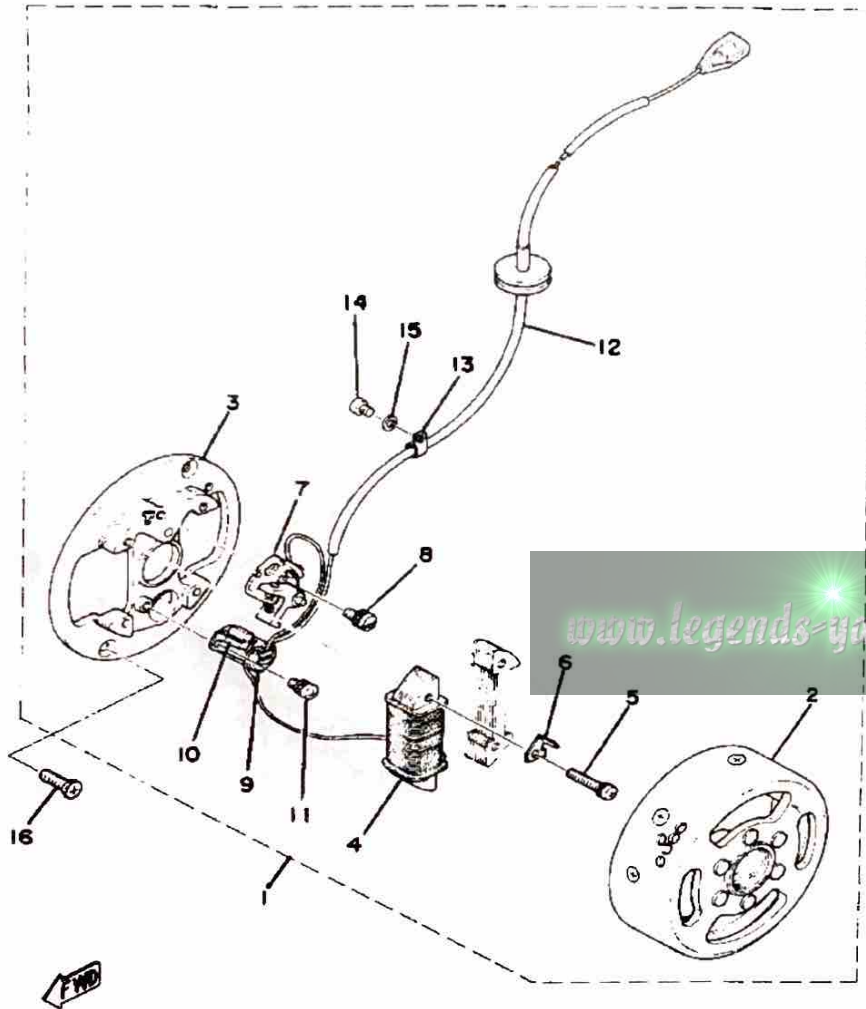
OIL PUMP



Ref. No.	Part Number	Description	Qty	Remarks
1	3MT-13116-00-00	GASKET, PUMP CASE (8Y0-13116-00)	1	
2	90201-08624-00	WASHER, PLATE	1	
3	257-13175-00-00	SHAFT, WORM	1	
4	93603-22028-00	PIN, DOWEL	1	
5	1E7-13176-00-00	METAL, WRM SHAF OTR	1	
6	93101-10090-00	OIL SEAL	1	
7	90201-105J4-00	WASHER, PLATE (90201-106H1)	2	
8	353-13178-00-00	GEAR, PUMP DRIVE	1	
9	99001-08600-00	CIRCLIP	1	
10	98580-05016-00	SCREW, PAN HEAD (98501-05016)	2	
11	(1K8-13101-01-00)	OIL PUMP ASSEMBLY	1	
12	137-13137-00-10	SHIM (1.0T)	1	
13	137-13138-01-00	PLATE, ADJUSTING	1	
14	367-13146-01-00	CLIP	1	
15	95380-05600-00	NUT	1	
16	92990-05100-00	WASHER, SPRING	1	
17	98901-04008-00	SCREW, BIND	1	
18	90430-04004-00	GASKET	1	
19	93505-32002-00	BALL	1	
20	90501-02217-00	SPRING, COMPRESSION	1	
21	353-13552-01-00	NOZZLE	1	
22	90468-02033-00	CLIP	1	
23	90445-05217-00	HOSE	1	
24	90501-06025-00	SPRING, COMPRESSION	1	
25	248-13174-00-00	HOLDER, OIL PIPE	1	
26	90468-02033-00	CLIP	1	

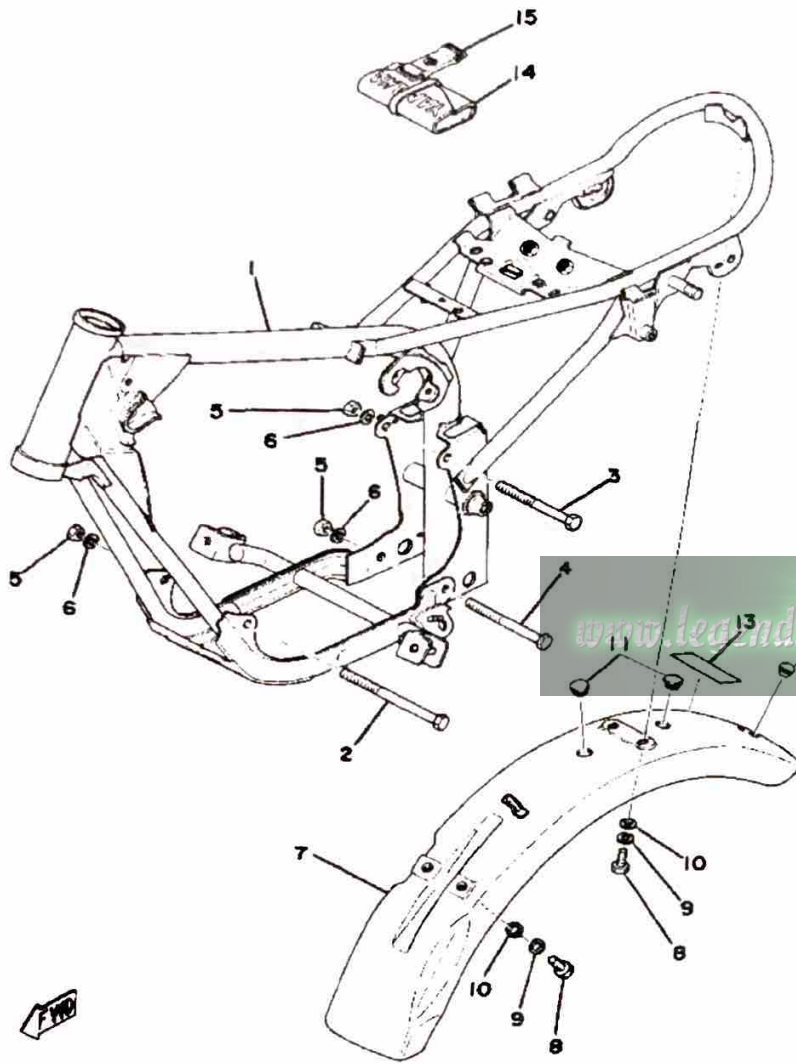
www.legends-yamaha.com

FLYWHEEL MAGNETO



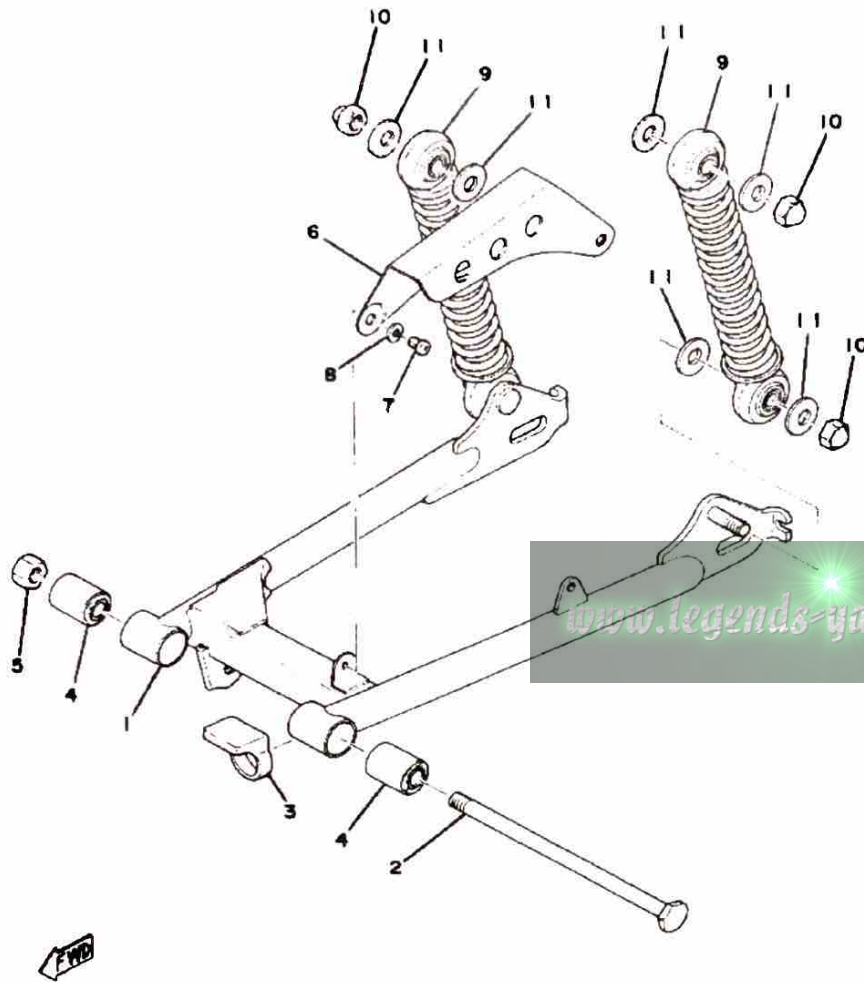
Ref. No.	Part Number	Description	Qty	Remarks
1	1T0-81300-20-00	FLYWHL MAGNETO ASSEMBLY (367-81300-21-00)	1	
2	(1T0-81350-20-00)	ROTOR ASSEMBLY	1	
3	520-81309-20-00	BASE, MAGNETO	1	
4	207-81312-21-00	COIL, SOURCE	1	
5	97602-04125-00	SCREW, PN/HD.W/WSHR (4-25)	2	
6	296-81332-20-00	PLATE, TIMING	1	
7	1V1-81321-90-00	CONTACT BRKR ASSEMBLY	1	
8	110-81346-21-00	SCREW, PAN HEAD	1	
9	296-81325-90-00	CONDENSER	1	
10	116-81331-20-00	LUBRICATOR	1	
11	110-81346-21-00	SCREW, PAN HEAD	1	
12	(367-81315-20-00)	LEAD WIRE ASSEMBLY	1	
13	(367-81328-20-00)	CLAMP	1	
14	98580-04008-00	SCREW, PAN HEAD	1	
15	92901-04100-00	WASHER, SPRING	1	
16	98701-05016-00	SCREW, FLAT HEAD	2	

FRAME - REAR FENDER

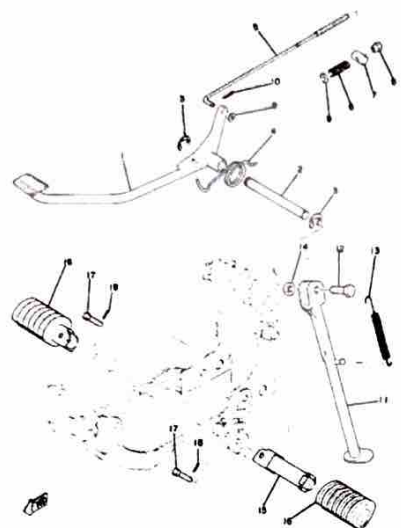


Ref. No.	Part Number	Description	Qty	Remarks
1	(367-21110-10-33)	FRAME	1	YAMAHA BLACK
2	95811-08120-00	BOLT, FLANGE (95812-08120) .	1	
3	95811-08090-00	BOLT, FLANGE (95822-08090) .	1	
4	95811-08095-00	BOLT, FLANGE	1	
5	95701-08500-00	NUT, FLANGE	3	
6	92990-08100-00	WASHER	3	
7	(367-21610-00-20)	FENDER, REAR	1	CRYSTAL SILVER
8	97301-06014-00	BOLT, HEXAGON	4	
9	92995-06100-00	WASHER, SPRING	4	
10	92901-06600-00	WASHER	4	
11	214-84154-60-00	GROMMET	2	
12	90338-07043-00	PLUG, SPEC"L SHAPE	2	
13	288-21659-00-00	LABEL, SAFETY	1	
14	2U2-W2810-00-00	TOOL KIT	1	
15	21V-21376-00-00	BAND, TOOL	1	

REAR ARM - REAR CUSHION - CHAIN C/



Ref. No.	Part Number	Description	Qty	Remarks
1	(367-22110-00-33)	REAR ARM	1	YAMAHA BLACK
2	288-22141-00-00	SHAFT, PIVOT	1	
3	183-22151-00-00	SEAL, GUARD	1	
4	102-22123-00-00	BUSH 1	2	
5	95303-10600-00	NUT (95301-10600)	1	
6	288-22311-00-33	CASE, CHAIN	1	YAMAHA BLACK
7	98580-05010-00	SCREW, PAN HEAD	2	
8	92990-05100-00	WASHER, SPRING	2	
9	367-22210-21-00	SHK/ABS ASSEMBLY, REAR .	2	
10	90176-10013-00	NUT, CROWN	4	
11	90201-10437-00	WASHER, PLATE	8	

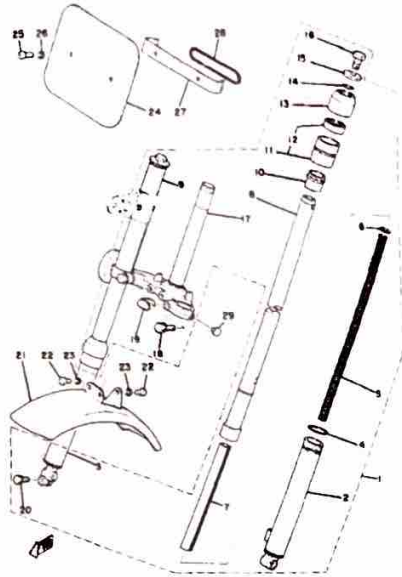


STAND - FOOTREST - BRAKE PEDAL

Ref. No.	Part Number	Description	Qty	Remarks
1	2F4-27211-00-R4	PEDAL, BRAKE	1	
2	2A3-27212-00-00	SHAFT, BRAKE PEDAL	1	
3	93430-12008-00	CIRCLIP	2	
4	90508-32056-00	SPRING, TORSION	1	
5	288-27231-00-00	ROD, BRAKE	1	
6	90501-10245-00	SPRING, COMPRESSION	1	
7	90249-12008-00	PIN	1	
8	90179-06411-00	NUT	1	
9	92901-06600-00	WASHER	2	
10	91490-20020-00	PIN, COTTER	1	
11	367-27311-02-R4	STAND, SIDE	1	YAMAHA BLACK
12	90109-08031-00	BOLT	1	
13	90506-29052-00	SPRING, TENSION	1	
14	90185-08055-00	NUT, SELF-LOCKING	1	
15	214-27421-00-00	FOOTREST 2	2	
16	214-27413-00-00	COVER, FOOTREST	2	
17	91701-08038-00	PIN, CLEVIS	2	
18	91490-20020-00	PIN, COTTER	2	

www.legends-yamaha.eu2.yamaha.com

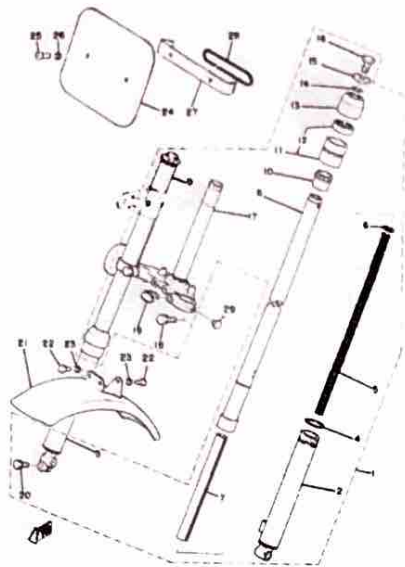
FRONT FORK - FRONT FENDER



Ref. No.	Part Number	Description	Qty	Remarks
1	367-F2310-16-13	UNAVAILABLE IN PRICE BOOK	1	SILVER
2	(374-23126-00-35)	TUBE, OUTER 1	1	SILVER
3	(374-23136-00-35)	TUBE, OUTER 2	1	SILVER
4	207-23147-00-00	O-RING	2	
5	(367-23141-61-00)	SPRING, FRONT FORK	2	
6	(290-23149-00-00)	WASHER, SPRING UPR	2	
7	(367-23166-61-00)	SPACER, OIL LOCK	1	
8	439-23124-00-00	TUBE, INNER 1	1	
9	(367-23134-61-00)	TUBE, INNER 2	1	
10	109-23125-00-00	METAL, SLIDE 1	2	
11	290-23150-01-00	OUTER NUT	2	
12	109-23145-01-00	OIL SEAL	2	
13	290-23144-00-00	SEAL, DUST	2	
14	307-23114-00-00	O-RING	2	
15	207-23112-00-00	WASHER, CAP	2	
16	395-23111-00-00	BOLT, CAP	2	
17	367-23340-60-33	UNDER BRACKET	1	YAMAHA BLACK
18	5J0-23346-00-00	BOLT 1	2	
19	260-23318-40-00	HOLDER, CABLE 1	1	
20	(90119-08010-00)	BOLT, WITH WASHER	1	
21	(288-21510-01-20)	FENDER, FRONT	1	CRYSTAL SILVER
22	97011-06010-00	BOLT	3	
23	92901-06600-00	WASHER	3	
24	288-23485-00-00	PLATE, NUMBER	1	
25	98580-06010-00	SCREW, PAN HEAD (92503-06010)	2	
26	92901-06600-00	WASHER	2	
27	288-23486-00-00	STAY, PLATE	1	
28	288-23489-00-00	BAND	1	

www.legends-yamaha.com

CONTINUED ON NEXT FRAME ►

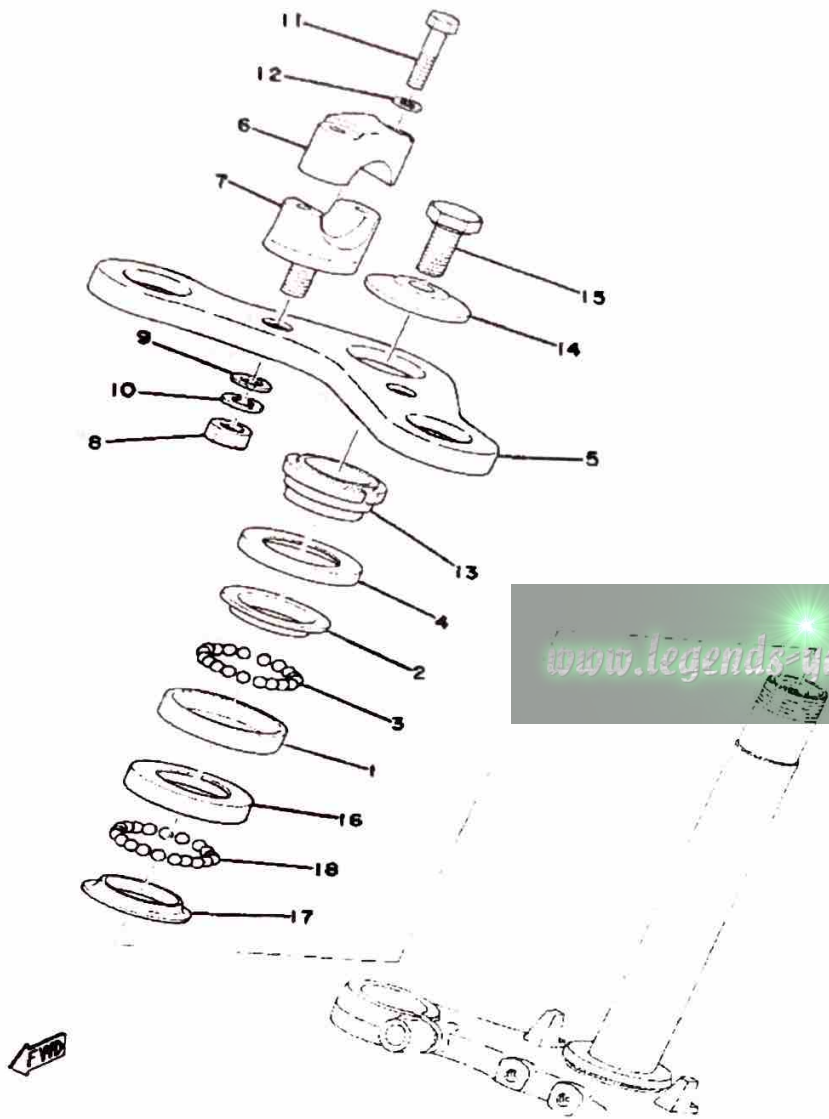


FRONT FORK - FRONT FENDER

Ref. No.	Part Number	Description	Qty	Remarks
29	(90338-04010-00)	PLUG, SPEC"L SHAPE	2	

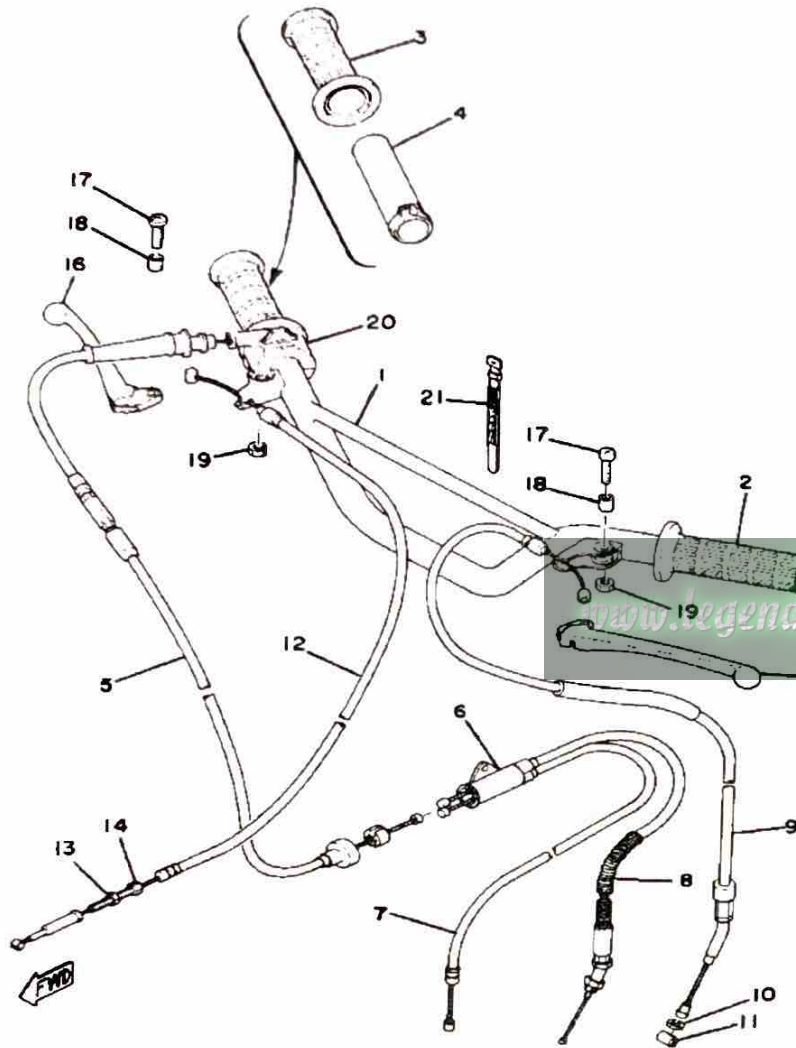
www.legends-yamaha-enduros.com

STEERING



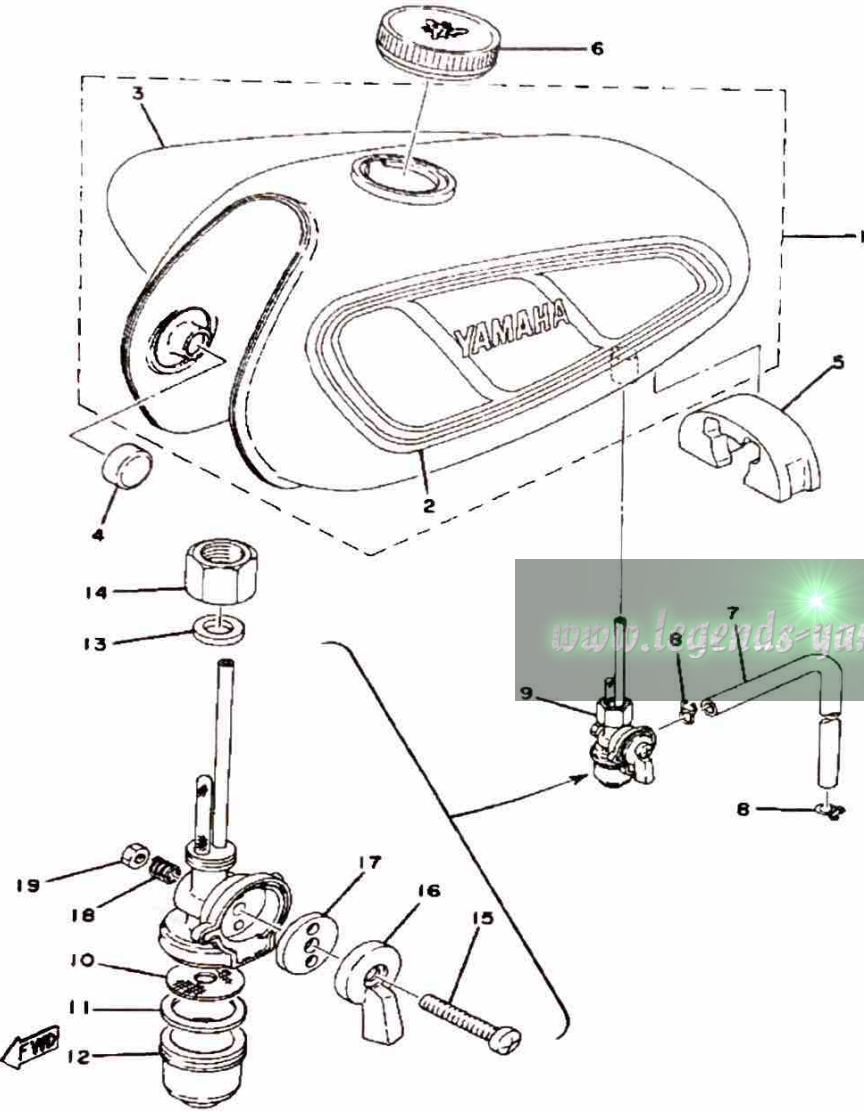
Ref. No.	Part Number	Description	Qty	Remarks
1	22F-23412-01-00	RACE, BALL 2	1	
2	22F-23411-01-00	RACE, BALL 1	1	
3	93503-16010-00	BALL	22	
4	122-23416-00-00	COVER, BALL RACE 2	1	
5	185-23435-00-98	CROWN, HANDLE	1	SILVER
6	462-23441-00-00	HOLDER, HANDLE UPR (122-23441-00-00)	2	
7	462-23442-00-98	HOLDER, HANDLE LWR (122-23442-02-00)	2	
8	95303-10600-00	NUT (95301-10600)	2	
9	92990-10600-00	WASHER, PLATE	2	
10	92990-10100-00	LOCKWASHER	2	
11	97013-06035-00	BOLT	4	
12	92901-06600-00	WASHER	4	
13	90179-25051-00	NUT	1	
14	90209-10021-00	WASHER, SPEC"L SHAP	1	
15	90105-10006-00	BOLT, WASHER BASED	1	
16	156-23412-00-00	RACE, BALL 2	1	
17	156-23411-00-00	RACE, BALL 1	1	
18	93501-04011-00	BALL	19	

HANDLE - WIRE



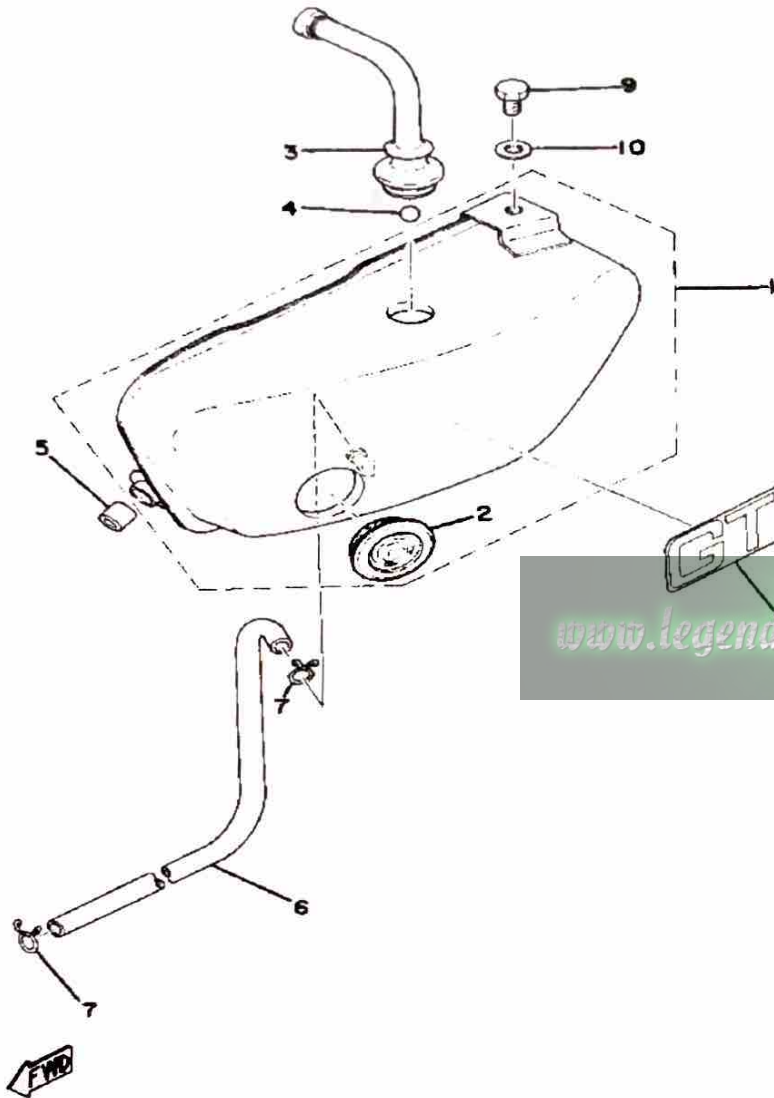
Ref. No.	Part Number	Description	Qty	Remarks
1	367-26111-03-00	HANDLEBAR	1	
2	462-26241-00-00	GRIP (L.H.)	1	
3	462-26242-00-00	GRIP (R.H.)	1	
4	434-26243-12-00	TUBE, THROTTLE GUIDE	1	
5	367-26311-02-00	CABLE, THROTTLE 1	1	
6	4U1-26261-00-00	CONNECTOR, CABLE	1	
7	367-26312-01-00	CABLE, THROTTLE 2	1	
8	367-26321-02-00	CABLE, PUMP	1	
9	367-26335-02-00	CABLE, CLUTCH	1	
10	92901-06600-00	WASHER	1	
11	164-26363-00-00	END, CABLE	1	
12	367-26341-01-00	CABLE, BRAKE	1	
13	90179-06143-00	NUT, SPEC"L SHAPE	1	
14	90123-06011-00	BOLT	1	
15	137-83912-02-38	LEVER L	1	
16	2N3-83922-00-00	LEVER R	1	
17	98501-05018-00	SCREW, PAN HEAD	2	
18	90387-05383-00	COLLAR	2	
19	95380-05600-00	NUT	2	
20	462-83976-01-00	SWITCH, HANDLE 1	1	
21	437-83936-01-00	BAND, SWITCH CORD	1	

FUEL TANK



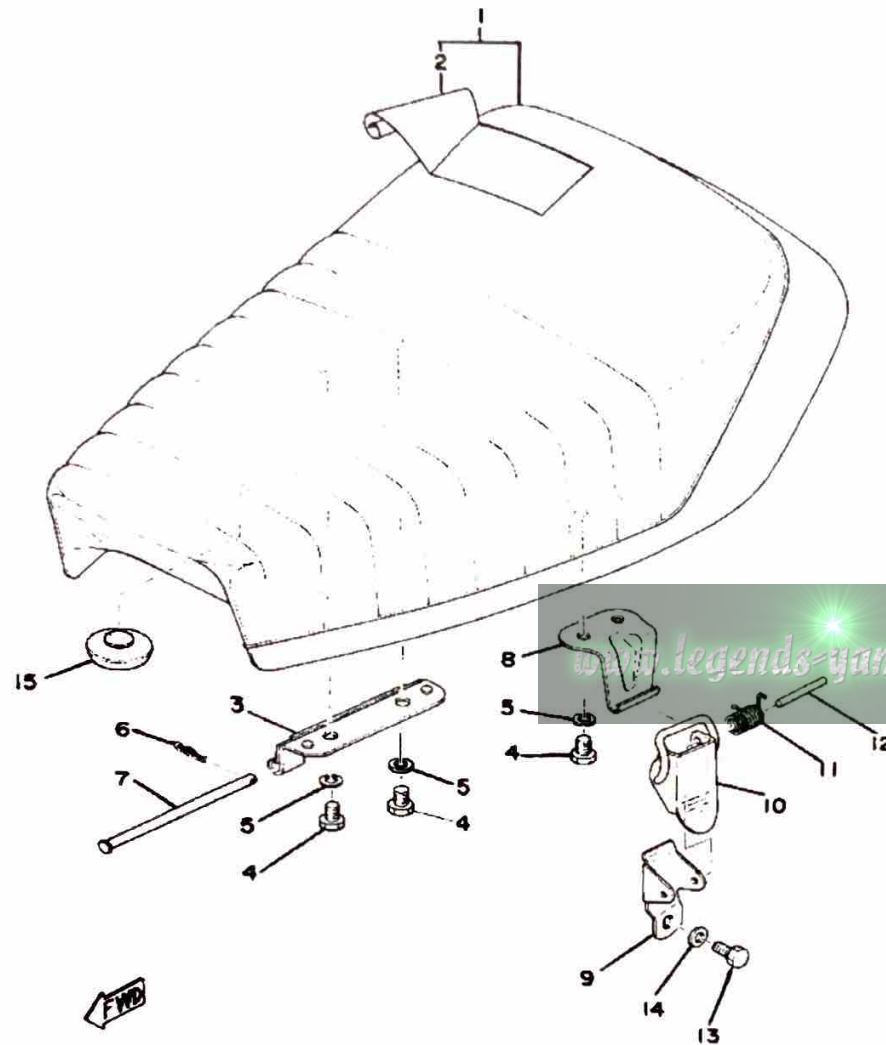
Ref. No.	Part Number	Description	Qty	Remarks
1	(367-24110-Y0-06)	FUEL TANK	1	CRYSTAL SILVER
2	(374-24244-20-00)	GRAPHIC, FUEL TNK 1	1	
3	(374-24245-20-00)	GRAPHIC, FUEL TNK 2	1	
4	122-24181-00-00	DAMPER, LOCATING 1	2	
5	353-24182-00-00	DAMPER, LOCATING 2	1	
6	122-24610-01-00	CAP ASSEMBLY	1	
7	90445-09066-00	HOSE	1	
8	90467-08003-00	CLIP	2	
9	367-24500-04-00	FUEL COCK ASSEMBLY 1 (5U7-24500-00)	1	
10	355-24515-00-00	. NET, FILTER 2	1	
11	102-24522-01-00	. GASKET	1	
12	122-24521-00-00	. CUP, FILTER	1	
13	122-24532-00-00	. GASKET	1	
14	603-24531-01-00	. NUT	1	
15	98501-05030-00	. SCREW, PAN HEAD	1	
16	(355-24524-01-00)	LEVER, COCK	1	
17	355-24523-00-00	. VALVE	1	
18	(355-24518-00-00)	WASHER, WAVE	1	
19	95333-08600-00	. NUT, HEXAGON	1	

OIL TANK



Ref. No.	Part Number	Description	Qty	Remarks
1	(367-21705-00-20)	OIL TANK ASSEMBLY	1	CRYSTAL SILVER
2	214-21761-00-00	. GAUGE, LEVEL	1	
3	367-21771-00-00	BODY, CAP	1	
4	288-24684-00-00	BALL	1	
5	353-21778-00-00	DAMPER, LOCATING 1	1	
6	90445-09111-00	HOSE	1	
7	90467-08003-00	CLIP	2	
8	(374-21787-30-00)	EMBLEM 7	1	
9	97013-06012-00	BOLT	1	
10	92901-06600-00	WASHER	1	

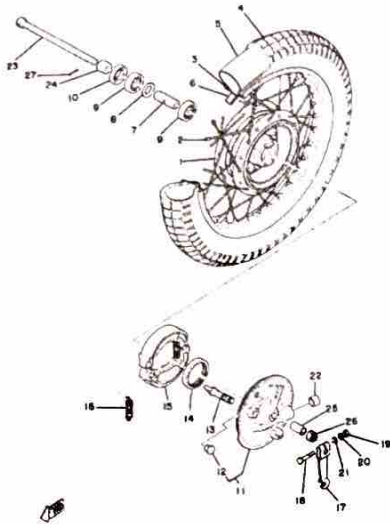
SEAT



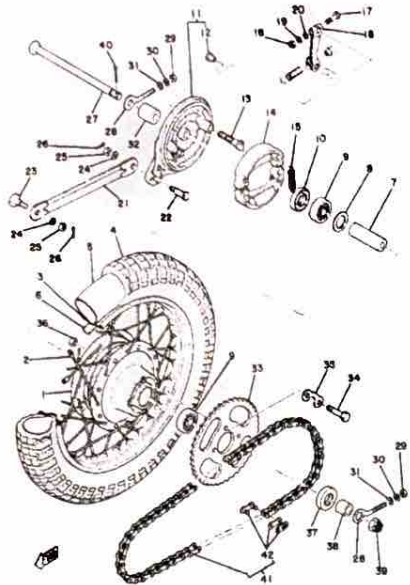
Ref. No.	Part Number	Description	Qty	Remarks
1	2A3-W2473-00-00	SEMI-DBL-SEAT ASSEMBLY	1	
2	2A3-24771-00-00	COVER, SM-DBL SEAT	1	
3	353-24726-00-00	HINGE, SEAT	1	
4	97013-06012-00	BOLT	4	
5	92995-06100-00	WASHER, SPRING	4	
6	90468-10050-00	CLIP	1	
7	91701-05105-00	PIN, CLEVIS (3M7)	1	
8	278-24728-00-00	BRACKET, SEAT	1	
9	214-24718-00-00	BRACKET, SEAT	1	
10	214-24776-00-33	LEVER, SEAT	1	
11	90508-10012-00	SPRING, TORSION	1	
12	90249-04068-00	PIN, SPECL SHAPE	1	
13	97013-06012-00	BOLT	1	
14	92901-06600-00	WASHER	1	
15	1L9-24741-00-00	PAD, SEAT	3	

FRONT WHEEL

Ref. No.	Part Number	Description	Qty	Remarks
1	(367-25111-00-Y8)	HUB, FRONT	1	
2	288-25104-01-00	SPOKE SET, FRONT	1	
3	94414-15058-00	RIM 1.40X 5	1	
4	94125-15478-00	250-15 IRC TRIALS	1	
5	94225-15103-00	TUBE 250X 5	1	
6	94313-15154-00	BAND, RIM	1	
7	90560-10303-00	SPACER, BEARING	1	
8	2E9-25116-00-00	FLANGE, SPACER 2	1	
9	93306-30003-00	BEARING (B6300Z)	2	
10	93102-20009-00	OIL SEAL	1	
11	393-25116-10-35	UNAVAILABLE IN PRICE BOOK	1	
12	90480-10068-00	GROMMET	1	
13	122-25351-02-00	CAMSHAFT	1	
14	93105-47007-00	OIL SEAL	1	
15	296-W2536-00-00	BRAKESHOE SET-2PCS	2	
16	90506-16150-00 (102-25333-00)	SPRING, TENSION	2	
17	109-25155-00-00	LEVER, CAMSHAFT 1	1	
18	90101-06278-00	BOLT	1	
19	95380-06600-00	NUT	1	
20	92995-06100-00	WASHER, SPRING	1	
21	92901-06600-00	WASHER	1	
22	90338-18014-00	PLUG	1	
23	99999-02188-00 (353-25181-03-00)	AXLE, WHEEL	1	
24	90387-10077-00	COLLAR	1	
25	90387-10264-00	COLLAR	1	
26	90171-10004-00	NUT, CASTLE	1	
27	91490-20020-00	PIN, COTTER	1	



www.legends-yamaha-enduros.com



REAR WHEEL

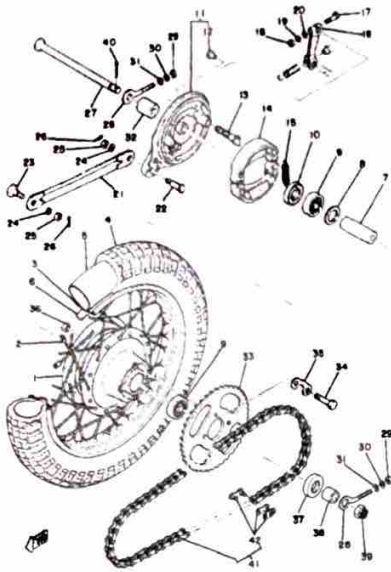
Ref. No.	Part Number	Description	Qty	Remarks
1	(288-25311-00-00)	HUB, REAR	1	
2	367-25304-00-00	SPOKE SET, REAR	1	
3	94414-14077-00	RIM 1.40X 4	1	
4	94127-14477-00	275-14 IRC TRIALS	1	
5	94227-14196-00	TUBE	1	
6	94327-14076-00	BAND, RIM (2.50-14) (94325-14099-00)	1	
7	90560-12139-00	SPACER (109-25317-00)	1	
8	109-25315-00-00	FLANGE, SPACER	1	
9	93306-30101-00	BEARING (B6301)	2	
10	93106-20033-00	OIL SEAL (3TU)	1	
11	(393-25320-10-38)	BRAKE SHOE PLT ASSEMBLY	1	
12	90480-10068-00	GROMMET	1	
13	122-25351-02-00	CAMSHAFT	1	
14	296-W2536-00-00	BRAKESHOE SET-2PCS	2	
15	90506-16150-00	SPRING, TENSION (102-25333-00)	2	
16	122-25355-00-00	LEVER, CAMSHAFT	1	
17	90101-06278-00	BOLT	1	
18	95380-06600-00	NUT	1	
19	92995-06100-00	WASHER, SPRING	1	
20	92901-06600-00	WASHER	1	
21	353-25371-00-00	BAR, TENSION	1	
22	90109-08183-00	BOLT	1	
23	90109-08368-00	BOLT	1	
24	92990-08100-00	WASHER	2	
25	95303-08700-00	NUT	2	
26	91490-20020-00	PIN, COTTER	2	
27	367-25381-00-00	AXLE, WHEEL	1	

www.legends-yamaha-enduros.com

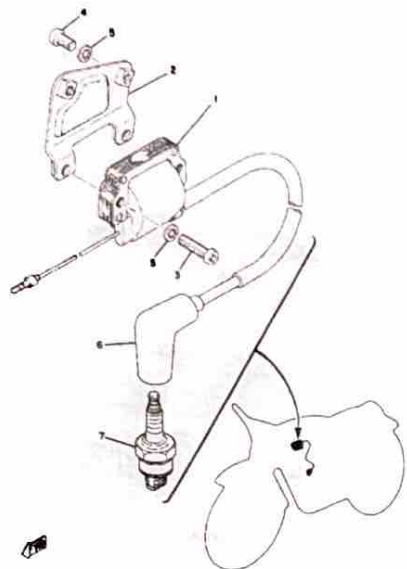
CONTINUED ON NEXT FRAME ►

REAR WHEEL

Ref. No.	Part Number	Description	Qty	Remarks
28	102-25389-00-00	PULLER, CHAIN 2	2	
29	95380-06600-00	NUT	2	
30	92995-06100-00	WASHER, SPRING	2	
31	92901-06600-00	WASHER	2	
32	90387-12412-00	COLLAR	1	
33	5J1-25441-20-00	SPROCKET, DRVN 41T (288-25441-10-33)	1	YAMAHA BLACK
34	90109-08319-00	BOLT	4	
35	2A3-25412-00-00	WASHER	2	
36	90170-08158-00	NUT	4	
37	93104-18006-00	OIL SEAL, SO-TYPE	1	
38	90387-120F9-00	COLLAR	1	
39	90171-12005-00	NUT, CASTLE	1	
40	91401-30030-00	PIN, COTTER	1	
41	94580-52096-00	420M-96RD	1	
42	94680-52001-00	. JOINT, CHAIN (DID 420M)	1	



www.legends-yamaha-enduros.com



ELECTRICAL

Ref. No.	Part Number	Description	Qty	Remarks
1	206-82310-41-00	IGNITION COIL ASSEMBLY ...	1	U.R.
	367-82310-30-00	IGNITION COIL ASSEMBLY ...	1	U.R.
2	375-82316-01-00	BRACKET, IGN COIL	1	
3	98511-06025-00	SCREW PAN HEAD (92501-06025)	2	
4	98580-06012-00	SCREW, PAN HEAD	2	
5	92995-06100-00	WASHER, SPRING	4	
6	56J-82370-00-00	PLUG CAP ASSEMBLY	1	NOISE SUPPRESSOR
7	NGK-B7HS0-00-00	PLUG, SPARK (NGK B7HS) ...	1	

www.legends-yamaha-enduros.com

REPAIR KIT

Ref. No.	Part Number	Description	Qty	Remarks
1	(367-11630-91-00)	PISTON KIT 4TH	1	
	367-11630-51-00	PISTON KIT STD	1	
	367-11630-61-00	PISTON KIT 1ST	1	
	367-11630-71-00	PISTON KIT 2ND	1	
	367-11630-81-00	PISTON KIT 3RD O/S	1	
2	367-11631-11-96	. PISTON STD	1	
	367-11635-11-00	. PISTON 1 O/S 0.5	1	
	367-11636-11-00	. PISTON 2 O/S 0.0	1	
3	527-11633-00-00	. PIN, PISTON	1	
4	93450-13022-00	. CIRCLIP	2	
5	367-11610-00-00	. PISTON RINGSET STD	1	
	367-11610-10-00	. PISTON RINGSET 1ST	1	
	367-11610-20-00	. PISTON RINGSET 2ND	1	
	367-11610-30-00	. PISTON RINGSET 3RD	1	
	367-11610-40-00	. PISTON RINGSET 4TH	1	
	538-11650-01-00	CONNECTING ROD ASSEMBLY	1	
7	3R1-11651-01-00	. ROD, CONNECTING	1	
8	93310-418T0-00	. BEARING, CYLINDRICAL	1	U.R.
9	257-11681-00-00	. PIN, CRANK 1	1	
10	90209-18112-00	. WASHER, SPEC'L SHAP ...	2	
11	93310-11268-00	. BEARING	1	

www.legends-yamaha-enduros.com

MOTORCYCLE
M7-009

GTMXD
1977 SERVICE DATA

MODEL - IBM I.D. NUMBER	GTMXD	367
Starting Engine and Frame Number	367-300101	367-300101
Basic Color (fuel tank)	Crystal Silver	
Net Weight	130 lbs.	
ENGINE (type, induction system)	2 stroke, 7 port, single, air-cooled	
Bore x Stroke x Cylinder(s)	47 x 42mm x 1	72cc
Compression Ratio (pressure)	6.8:1	
Piston Skirt Clearance (new/max.)	0.35 ~ 0.40mm (.014 ~ .016") / 0.1mm (.004")	
Ring End Gap (top/2nd/3rd)	0.15 ~ 0.35mm (.006 ~ .014") / Same / ϕ	
Ring Groove Clearance (top/2nd/3rd)	.08mm (.0032") / Same / ϕ	
Valve Clearance (eng. cold) Intake/Exhaust	ϕ	
AUTOLUBE - Minimum Pump Stroke/Color Code	0.20 ~ 0.25mm (.008 ~ .010") / Pink	
CARBURETOR (mfr.) (type) (I.D. number)	Teikei / Y16P-3 / 367E3	
Main Jet	No. 94	
Needle Jet	2.080	
Jet Needle/Clip Position	049.2	
Cutaway	1.0	
Pilot Jet	No. 34	
Air Jet	2.5 ~ 3.0	
Starter Jet	No. 50	
Air Screw (turns out) (idle speed)	1 1/2	
Float Level	23.0mm	
Air Filter (type x quantity)	Oiled Foam Rubber x 1	
DRIVE - Primary (type) (teeth) (ratio)	Helical Gear 68/19 3.578	
Secondary (type) (teeth) (ratio)	DK420, 9L 41/14 2.928	
Transmission Ratios 1st (teeth) (ratio) (O.A.)	39/12 3.250 34.064	
2nd	34/17 2.000 20.962	
3rd	30/21 1.428 13.973	
4th	27/24 1.125 11.791	
5th	ϕ	
6th	ϕ	
CAPACITIES - Transmission	500cc (17.0 oz.) Yamalube 4-cycle* or SAE10W30 Oil	
Oil Tank or Engine Sump	0.7 qts. Yamalube 2-cycle*	
Fuel Tank	1.3 gals. Low Lead (Regular) or Unleaded	
Front Forks	112cc (3.8 oz.) 10, 20 or 30 wt. Fork Oil*	
Rear Shocks	ϕ	
Tires (size/normal pressure)	Front: 2.50-15/20 psi Rear: 2.75-14/28 psi	
ELECTRICAL - Charging System (mfr.) (type)	Mitsubishi / Flywheel Magneto	
No Load Voltage Adj. (AC & DC generators)	ϕ	
Max. Generator (Magneto) Output	8V4A @ 8,000 rpm	
Field Coil (and/or) Charging Coil Resistance	ϕ	
Battery (mfr.) (model) (rating) (charge rate)	ϕ	
Headlight/Tailight Ratings	ϕ	
Ign. Coil Min. Spark Gap/Pri. Res./Sec. Res.	6mm / 1.025 Ω 6.0K Ω	
Source Coil Res./Pulse Coil Res.	1.345 Ω \pm 10%	
Condenser Capacity	0.30 μ F	
Point Gap/Spark Plug (type/gap)	0.3 ~ 0.4mm (.012 ~ .016") / NGK B-7HS / 0.5 ~ 0.6mm	
Timing (advanced) (retarded)	1.8 \pm 0.15mm B.T.D.C.	

N/A - Information Not Available *Available from Yamaha Parts Distributors, Inc.
 ϕ - Does Not Apply To This Model

A-22

MOTORCYCLE
M7-009

GTMXD
1977 SERVICE DATA

MODEL - IBM I.D. NUMBER	GTMXD	367
Starting Engine and Frame Number	367-300101	367-300101
Basic Color (fuel tank)	Crystal Silver	
Net Weight	130 lbs.	
ENGINE (type, induction system)	2 stroke, 7 port, single, air-cooled	
Bore x Stroke x Cylinder(s)	47 x 42mm x 1	72cc
Compression Ratio (pressure)	6.8:1	
Piston Skirt Clearance (new/max.)	0.35 ~ 0.40mm (.014 ~ .016") / 0.1mm (.004")	
Ring End Gap (top/2nd/3rd)	0.15 ~ 0.35mm (.006 ~ .014") / Same / ϕ	
Ring Groove Clearance (top/2nd/3rd)	.08mm (.0032") / Same / ϕ	
Valve Clearance (eng. cold) Intake/Exhaust	ϕ	
AUTOLUBE - Minimum Pump Stroke/Color Code	0.20 ~ 0.25mm (.008 ~ .010") / Pink	
CARBURETOR (mfr.) (type) (I.D. number)	Teikei / Y16P-3 / 367E3	
Main Jet	No. 94	
Needle Jet	2.080	
Jet Needle/Clip Position	049.2	
Cutaway	1.0	
Pilot Jet	No. 34	
Air Jet	2.5 ~ 3.0	
Starter Jet	No. 50	
Air Screw (turns out) (idle speed)	1 1/2	
Float Level	23.0mm	
Air Filter (type x quantity)	Oiled Foam Rubber x 1	
DRIVE - Primary (type) (teeth) (ratio)	Helical Gear 68/19 3.578	
Secondary (type) (teeth) (ratio)	DK420, 9L 41/14 2.928	
Transmission Ratios 1st (teeth) (ratio) (O.A.)	39/12 3.250 34.064	
2nd	34/17 2.000 20.962	
3rd	30/21 1.428 13.973	
4th	27/24 1.125 11.791	
5th	ϕ	
6th	ϕ	
CAPACITIES - Transmission	500cc (17.0 oz.) Yamalube 4-cycle* or SAE10W30 Oil	
Oil Tank or Engine Sump	0.7 qts. Yamalube 2-cycle*	
Fuel Tank	1.3 gals. Low Lead (Regular) or Unleaded	
Front Forks	112cc (3.8 oz.) 10, 20 or 30 wt. Fork Oil*	
Rear Shocks	ϕ	
Tires (size/normal pressure)	Front: 2.50-15/20 psi Rear: 2.75-14/28 psi	
ELECTRICAL - Charging System (mfr.) (type)	Mitsubishi / Flywheel Magneto	
No Load Voltage Adj. (AC & DC generators)	ϕ	
Max. Generator (Magneto) Output	8V4A @ 8,000 rpm	
Field Coil (and/or) Charging Coil Resistance	ϕ	
Battery (mfr.) (model) (rating) (charge rate)	ϕ	
Headlight/Tailight Ratings	ϕ	
Ign. Coil Min. Spark Gap/Pri. Res./Sec. Res.	6mm / 1.025 Ω 6.0K Ω	
Source Coil Res./Pulse Coil Res.	1.345 Ω \pm 10%	
Condenser Capacity	0.30 μ F	
Point Gap/Spark Plug (type/gap)	0.3 ~ 0.4mm (.012 ~ .016") / NGK B-7HS / 0.5 ~ 0.6mm	
Timing (advanced) (retarded)	1.8 \pm 0.15mm B.T.D.C.	

N/A - Information Not Available *Available from Yamaha Parts Distributors, Inc.
 ϕ - Does Not Apply To This Model



TECHNICAL BULLETIN