

1975 YAMAHA MOTORCYCLE ACCESSORIES AND SPECIALTIES.

50¢

GET IN LINE.



www.legends-yamaha-enduros.com



YAMAHA PARTS DISTRIBUTORS, INC.

6610 ORANGETHORPE AVENUE • BUENA PARK, CALIFORNIA 90620
MAIL ADDRESS: P.O. BOX 6610, BUENA PARK, CALIFORNIA 90620

A SUBSIDIARY OF
YAMAHA INTERNATIONAL CORP.

CABLE ADDRESS
YAMAHA
TELEPHONE 714/922-0231

Dear Enthusiast:

We at YPDI want to thank you for the acceptance and support you've given the accessories, specialties, and apparel we've been creating especially for you.

This year, as you'll see in the following pages, there's more variety than ever. There's more of everything you'll want for both your own present and future needs, and for gift-giving too. And we promise to keep up the high level of quality you've come to expect from Yamaha products. You'll find your Yamaha motorcycle dealer is eager to help you find the items you and your family want. (He's in the Yellow Pages.)

Here's some added good news: if you bring the card attached inside this catalog to your Yamaha motorcycle dealer, he'll sign it for you, thereby qualifying you for a great free gift. All you do is mail in the dealer-signed enclosed card and we'll send you a handsome Yamaha key chain.

Best of luck, and good riding in '75.

Sincerely,

YAMAHA PARTS DISTRIBUTORS, INC.



www.legends-yamaha-enduros.com

THE STARTING LINE.



This Yamaha line symbol is the mark for action in a wide range of products for outdoor enthusiasts, Yamaha motorcycle owners, and all motorcycle owners. The symbol is found on everything we make, from lush sweaters to Yamaha packages.

Besides serving as a symbol for motorcycling and outdoor fun, it also stands for an extraordinary level of quality in manufacturing.

The many products you see in this new catalog have not only been thoroughly tested by Yamaha experts, but also by consumers on hundreds of thousands of miles of roads and in all kinds of situations.

Accessories that attach on to Yamaha motorcycles do so easily and precisely. There are never installation nightmares caused by bad-fit and no-fit products. And all of our products do what we promise, with engineering to spare.

This year, the choice of Yamaha accessories, specialties, riding apparel and replacement parts is bigger than ever.

Look for all of them at your Yamaha motorcycle dealer's display with the sign of the line and bright yellow color.

You'll be at the starting line for added cycling excitement and enjoyment.

www.legends-yamaha-enduros.com

The mark creates a look of movement, taking different shape on each item in our new collection of riding apparel.

Each sweater and shirt makes an action statement in graphic color, bold and subtle at the same time.

And each gives the body just the right comfort for hard playing.

Get your body into something that both looks good and feels good: get in line!

All fashions are available for men, many for ladies and children.

GET YOUR BODY IN LINE.

Yamaha Sweaters

Choose one of three colors (Yamaha yellow, new blue and new wine) in a choice of turtle or crew neck and enjoy riding, hiking, boating or any outdoor activity in high-fashion spirits. Machine washable and guaranteed colorfast. Available in men's and ladies' sizes. Longer body length for more active movement. Yamaha graphics accent every sweater. 100% Virgin Orion Acrylic.

Crew Neck Shirts

The handsome crew neck t-shirt is 50% dacron, 50% cotton, wash and wear. Available in short sleeve, with rib-knit collar, in high-visibility yellow, new blue and wine. (Kids' sizes, too.)

Turtleneck Shirts

Turtleneck wash and wear shirt, available in long sleeves. Rib-knit cuffs and neck.

Knit Vests

(Sleeveless Sweaters)

100% Virgin Orion with in-style scoop neck, available in yellow, red and blue in four sizes. Machine washable and colorfast.

Plackets

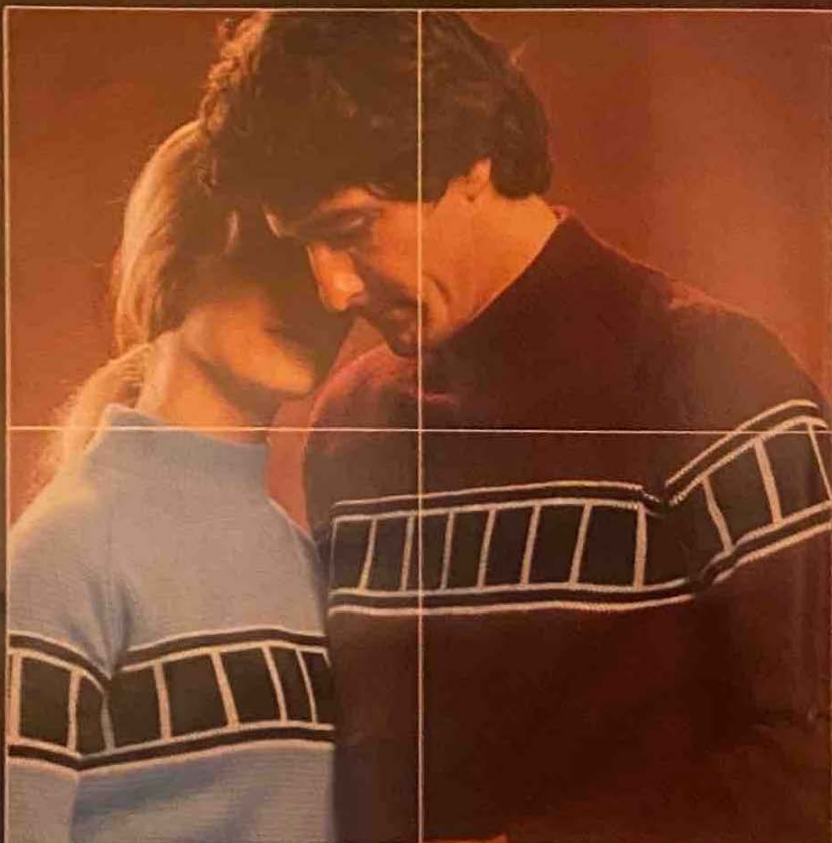
Cycle-inspired 4-button Placket made of cotton and dacron blend. Machine washable and available with long or short sleeves in three colors. Four sizes for men and women.

Tank Tops

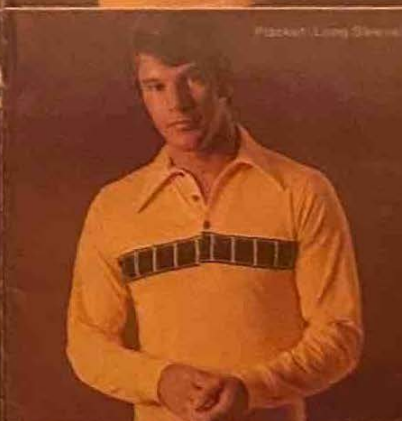
A fresh-feeling Tank Top knit with double-reinforced rib neck and arm seams, for both adults and kids. In popular colors.



Crew Neck Shirt



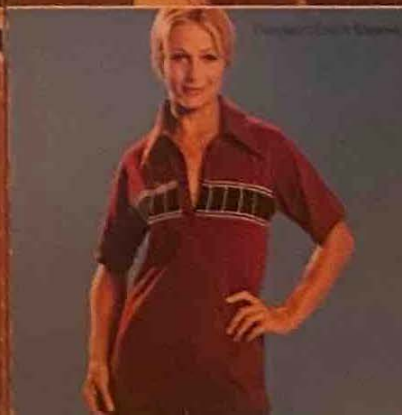
Turtleneck Shirt



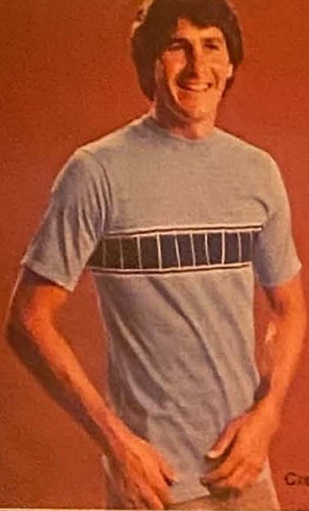
Placket Long Sleeve



www.legends-yamaha-enduro.com



Yamaha Polo Shirt



Crew Neck Shirt



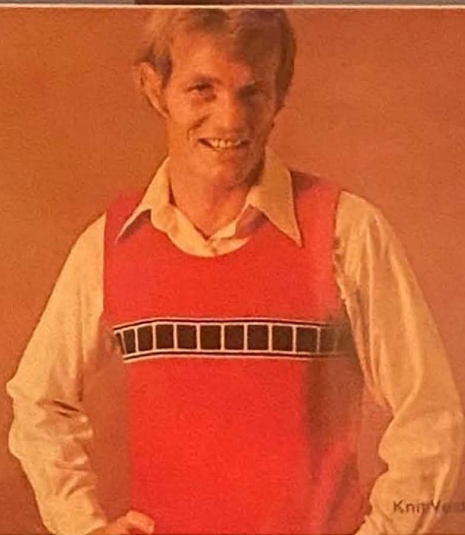
Crew Neck Shirt



Crew Neck Shirt



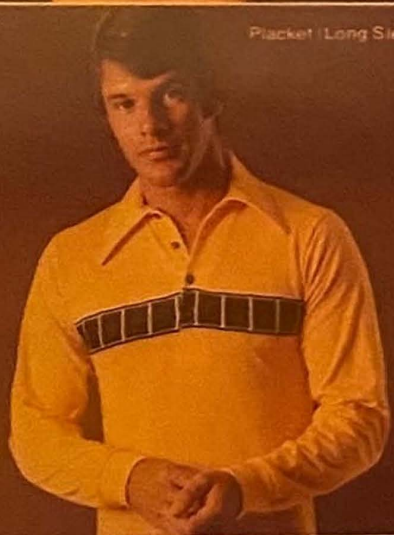
Turtleneck Shirt



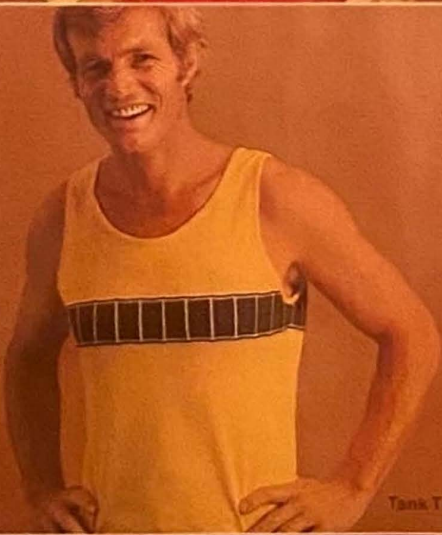
Knit Vest



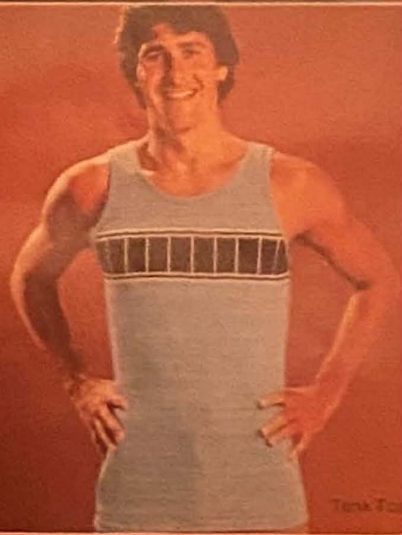
Knit Vests (Sleeveless Sweaters)



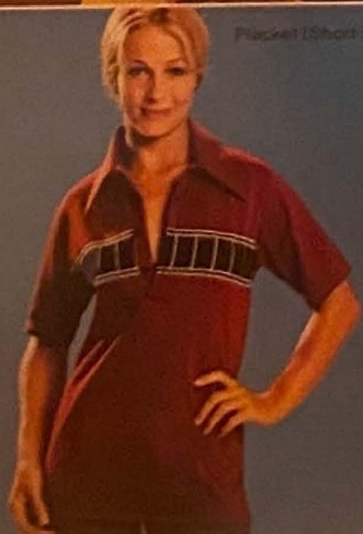
Placket (Long Sleeve)



Tank Top



Tank Top



Placket (Short Sleeve)



Placket (Short Sleeve)

www.legends-yamaha-enduro.com



Placket (Short Sleeve)

These superb looking, superb wearing fashions round out this year's apparel selection from Yamaha.

For protection from the elements or just for a unique riding look, they're all hard to beat.

All fashions are available for men, many for ladies and children.

Wind Shirt

The Wind Shirt is a lot more than just a shirt. It features two sleeve snaps, large pockets with dual snaps, snaps on the stylish epaulets, inner waterproof coating, a distinctive Yamaha patch sewn on and a sewn down collar for comfort while riding. Made from a high quality denim, in four sizes for men and ladies.

All-Weather Riding Suit

Constructed of a blend of antron and nylon and hydrostatically tested for optimum moisture protection. Made to be worn over casual or business clothes, the suit is designed to be comfortable in temperatures ranging from cold northern winters to the sunny summers of Southern California.

The suit "breathes" and perspiration is "wicked" away from the skin to evaporate through the cloth; even though the outside elements are unable to penetrate the rain-proof outer fabric.

Detailing on the 2-piece suit features an all-weather comfort ventilation flap (on the back) with interior nylon mesh lining for flow-through ventilation; a two-way Talon zipper that opens from either bottom or top for riding comfort; and a mandarin-style collar with a velcro closure.

Plenty of storage space is provided in six extra large "bellows-type" pockets, fully lined and weatherproofed.

The belt is 100 percent adjustable, heavy-duty nylon with two chrome steel buckles. Cuffs are fully adjustable.

Pants have 3-way snaps at the cuff for perfect fit around the boot tops. All seams are double-stitched and reinforced in critical areas.

The jacket has a zip-in, zip-out pile lining which can be removed easily for warm weather riding. The entire suit is machine washable and available in dark navy blue only.

Competition Jacket

The Yamaha Competition Racing Jacket is made of polyester and cotton. Color-fast and wash-and-wear with 100% nylon knit cuffs and full-length zipper. Slash pockets and quilted inner liner.

The Trials Cap

Tops off any outfit for the enthusiast. It's made from a cotton-poly blend material and features a Yamaha graphic patch. Each cap has black stitching to complement the Yamaha yellow, and a snap atop the short brim for a stylish look. Available in four sizes to fit any head size.

Parka

Western-styled, in high-visibility yellow. Ideal for cool weather riding. Water repellent interliner is Fortrel Polyester for ultra-lightweight and extreme warmth. Adjustable snap sleeves with an inner cuff and double-snap safari pockets with large, patch-pockets.

Street Gloves

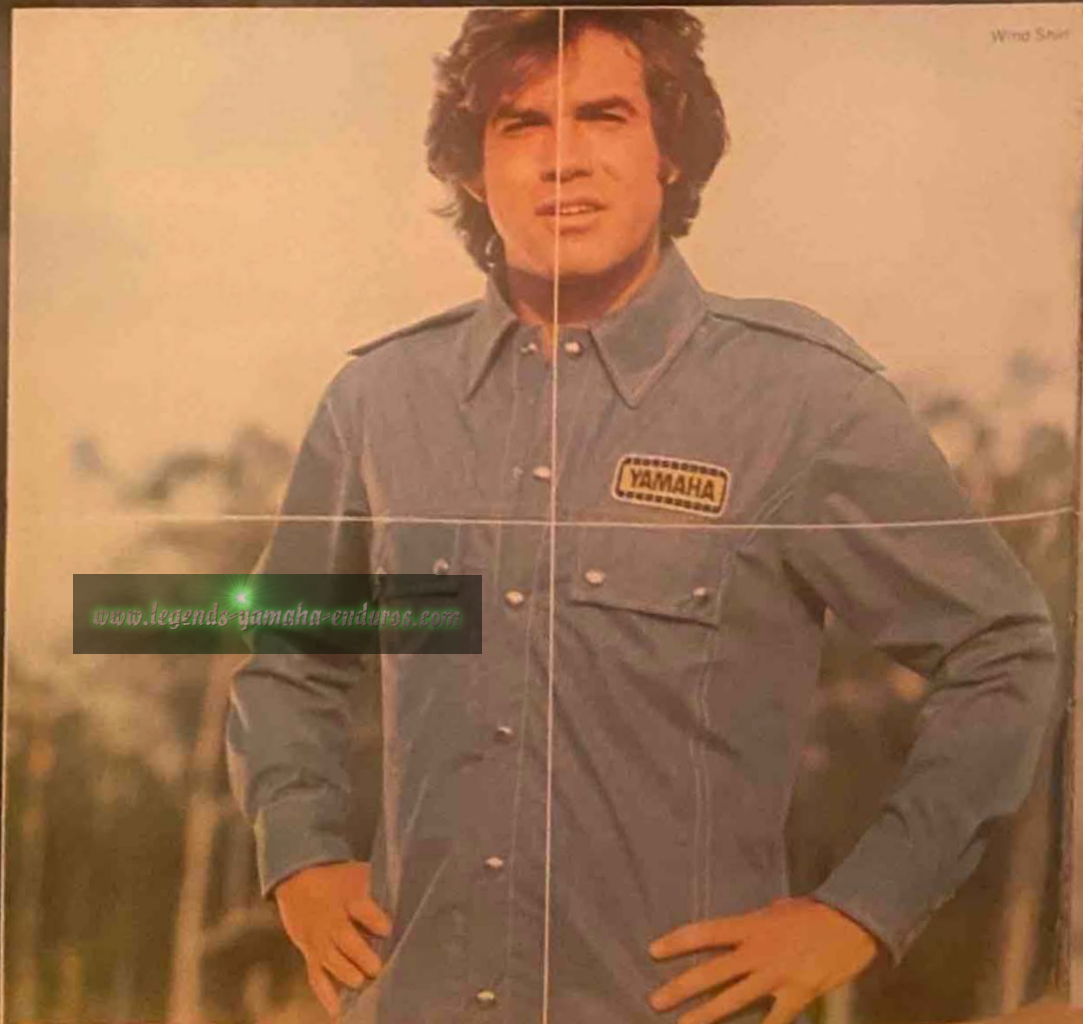
(Gauntlets)

The new Yamaha street gloves come with a tall gauntlet top that makes them easy to put on and remove. Available in black or brown in four sizes. Quality interior foam lining for cold weather riding.

Knit Cap

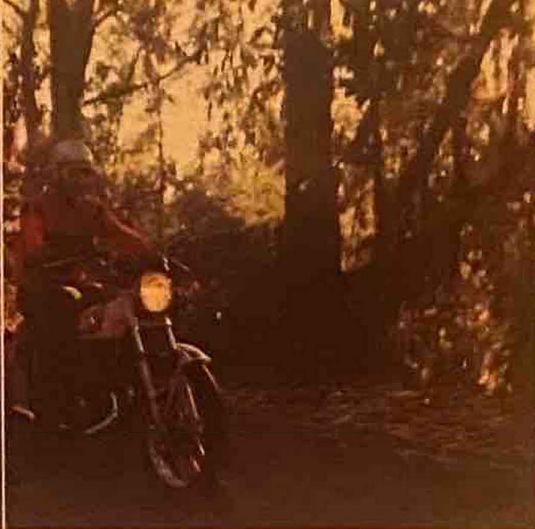
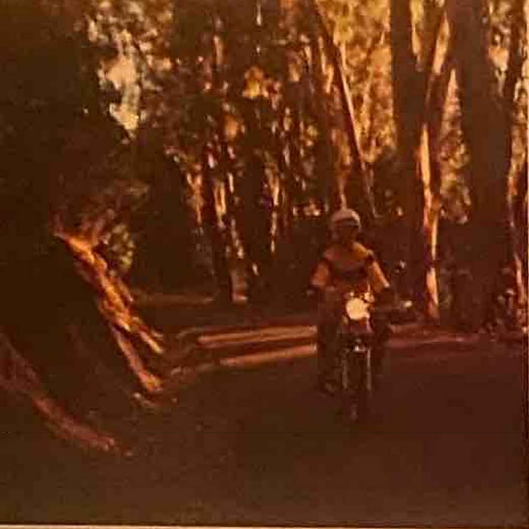
Our bold knit caps are the perfect way to top-off your Yamaha outfit.

MORE WAYS TO GET IN LINE



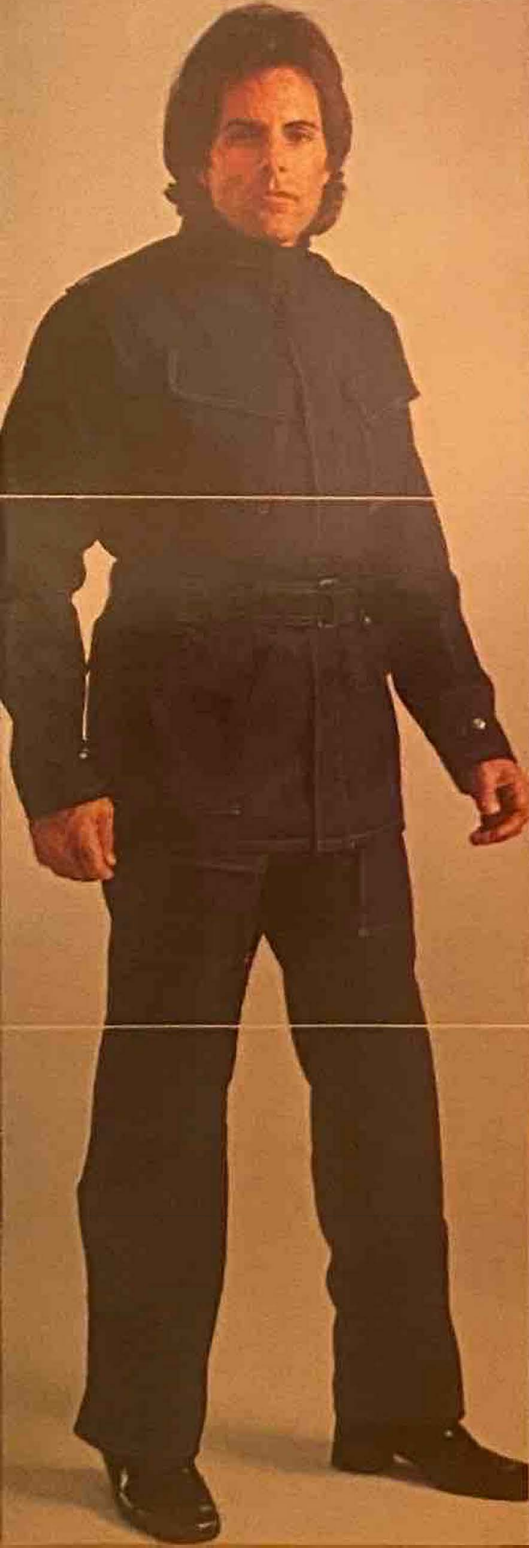
Wind Shirt

www.legends-yamaha-enduros.com

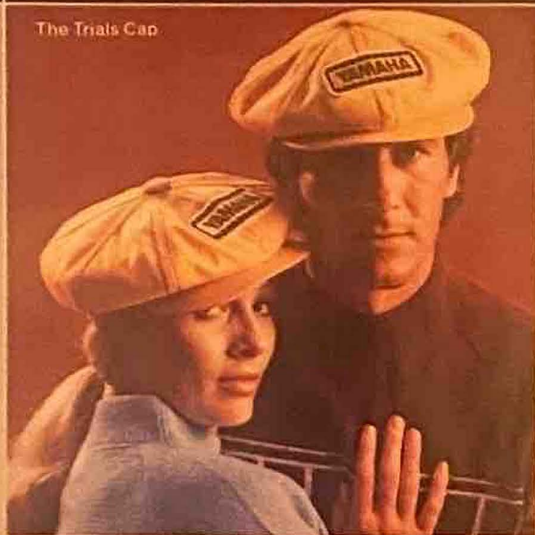


RIDING APPAREL

All-Weather Two-Piece Riding Suit

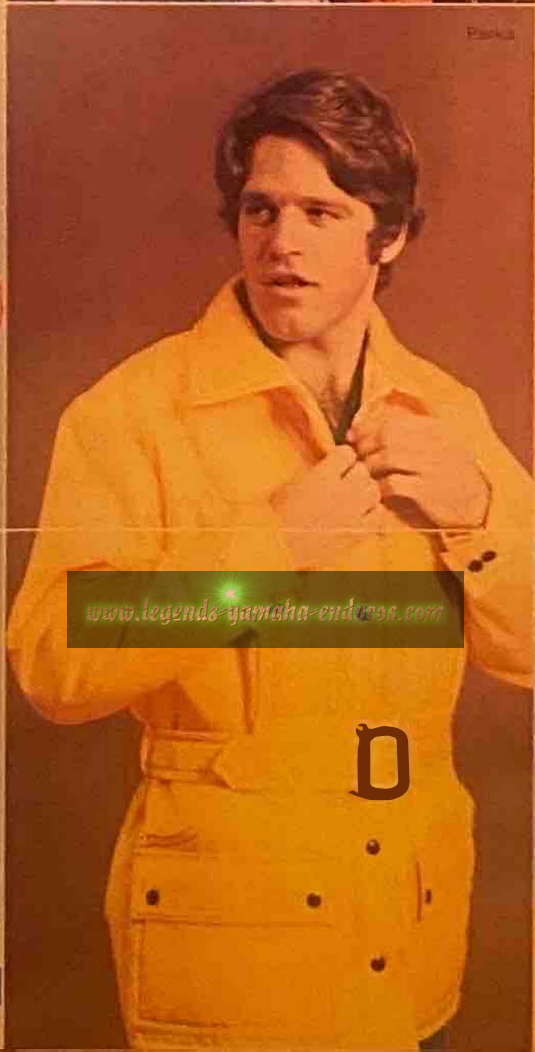


The Trials Cap



Competition Jacket

Parka

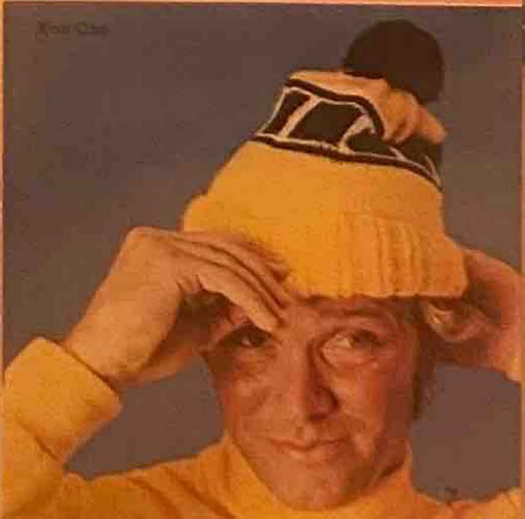


www.legends-yamaha-enduros.com

D



Street Gloves (Gauntlets)



Knit Cap

Get in line to add to your MX safety and enjoyment.

You'll find the Yamaha symbol on products enthusiasts regard as the finest MX gear available.

All made from top quality materials to rigid Yamaha specifications.

Available for men, and for ladies and kids where noted.

Enduro Boots

These new and improved Yamaha Enduro Boots are the best boots for general off-road riding available at a competitive price. Non-scuff leather on inside of ankle area to protect against wear, heavy duty double stitching throughout, double riveted lower buckles for pivoting and firmer adjustment, larger and heavier duty buckles, full 6-buckle adjustment, 100% water-resistant internal front gusset, full interior padding, a longer vamp to protect against shift lever damage, dual-flex insert at middle of vamp to allow greater movement and comfort and extra large ankle padding. Soles are heavy duty vibram-lug pattern. A Yamaha yellow back stripe accents every boot and a yellow stripe at the buckle area for a stylish look. This Yamaha boot has been specially designed for weekend enduros or cow-trailing in sizes from 6 to 13. Choose from a yellow or black front vamp.

Yamaha MX Boots (Pierre Karsmakers Model)

A new boot designed by the world renowned MX rider with a Yamaha "exclusive" feature: *buckle and lace* (hook and eyelet) combination for extra support of both the foot and ankle. This design offers additional comfort while still maintaining that necessary "feel." The new MX Boot features double stitching at all stress areas, a spring steel shank, high abrasion resistant sole, a seven buckle outer adjustment, metal front toe protectors for added life, 100% heavy duty cowhide, extra hard reinforced laminated box toe, fully lined and padded interior, foam padded shin guard, yellow accenting at top rib and yellow back stripe to a full 16 inches in height, in sizes 6-13 and half sizes.

Yamaha Boots for Ladies & Kids

All the great features of full-sized Yamaha Motocross and Enduro Boots are now here for kids and ladies. 5 buckle adjustment. Three yellow leather vamp stripes for a "racy" look.

Riding Socks

Tall Riding Socks in rich red, blue or yellow. 80% orlon, 20% nylon, with terry cloth inner construction that resists dampness and perspiration for extra comfort. Roll-over rib cuff. Complements the other color coordinated Yamaha MX and Riding Apparel. For men, ladies and kids.

Riding Belts

Tested and approved by the Yamaha factory racing team. Made with heavy canvas back panels and elastic side panels. Back support is strengthened by three leather ribs. Besides offering good looks, these new Yamaha belts also help make touring and competition riding safer and more comfortable. In all sizes for adults and children.

Chest Protectors

The Yamaha Chest Protector offers maximum protection, but doesn't add a lot of weight. A must for competition riding. A special smaller size is available for the kid, too.

MX Gloves

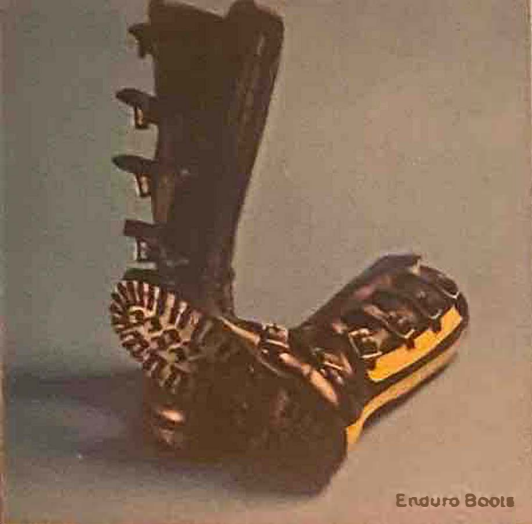
Split cowhide (with smooth side out) feature heavy-duty nylon stitching with reinforced sponge rubber knuckle, hand guards with leather covered thumb guard, and elastic wrist bands. With a special "pre-cupped palm" cut of leather for better fit and control.

MX Jerseys

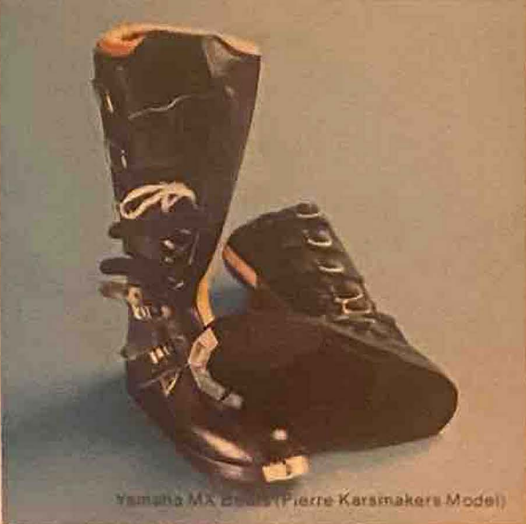
Clean, vibrant styling in high-visibility yellow, brilliant blue or bright red. Machine-washable. Comfortable to wear. (Available in kids' sizes, too.) Tear resistant nylon. Padded shoulders and elbows. Yamaha graphics accent design on shoulder bands and cuffs. A genuine Yamaha MX Team Jersey (in small sizes for kids too).

GET IN LINE FOR MX ACTION.

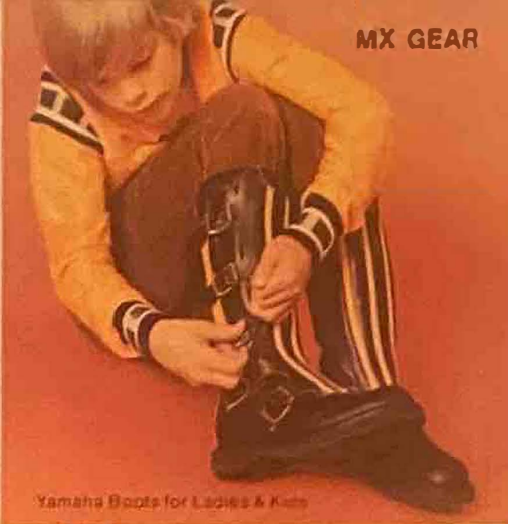




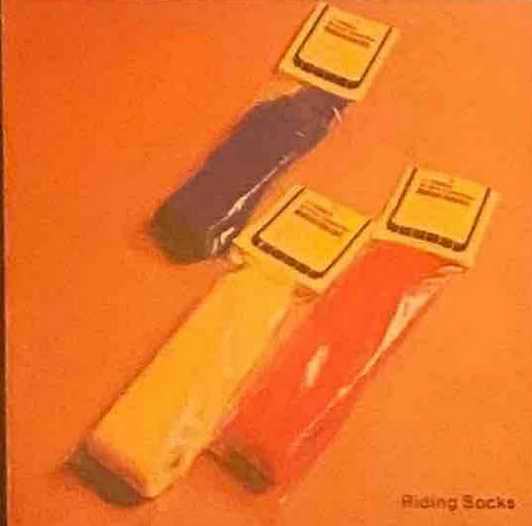
Enduro Boots



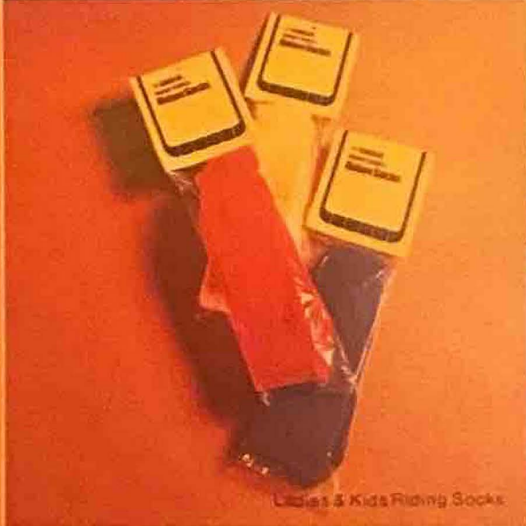
Yamaha MX Boots (Pierre Karsmakers Model)



Yamaha Boots for Ladies & Kids



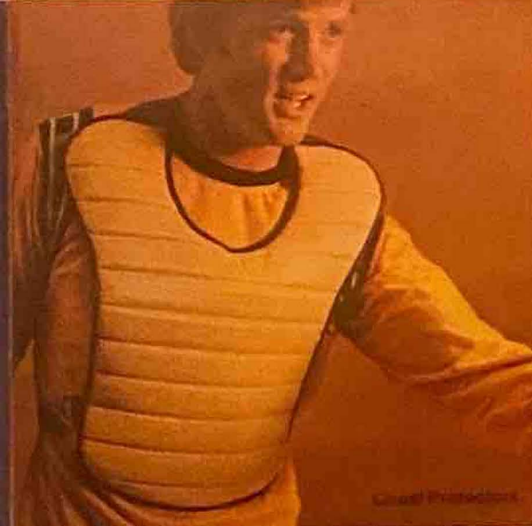
Riding Socks



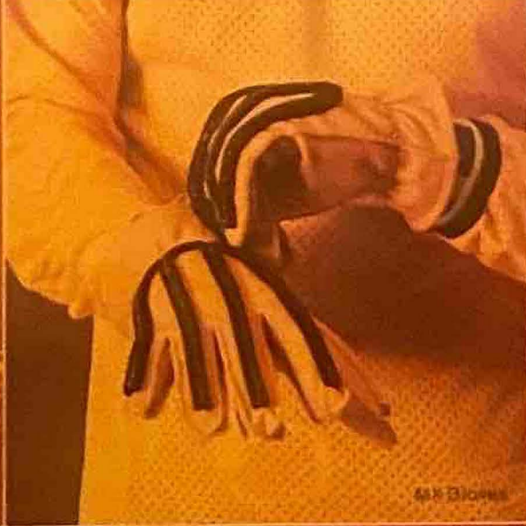
Ladies & Kids Riding Socks



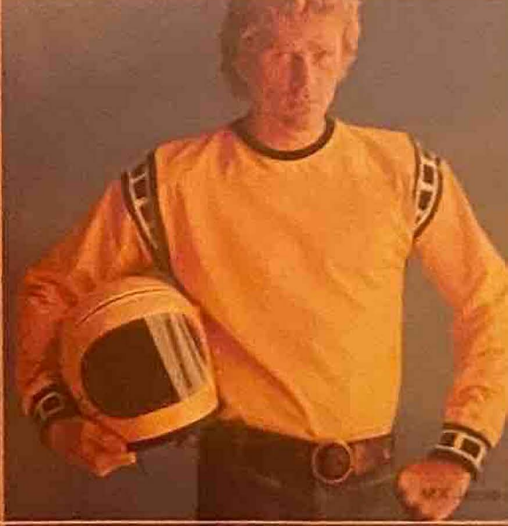
Riding Corset



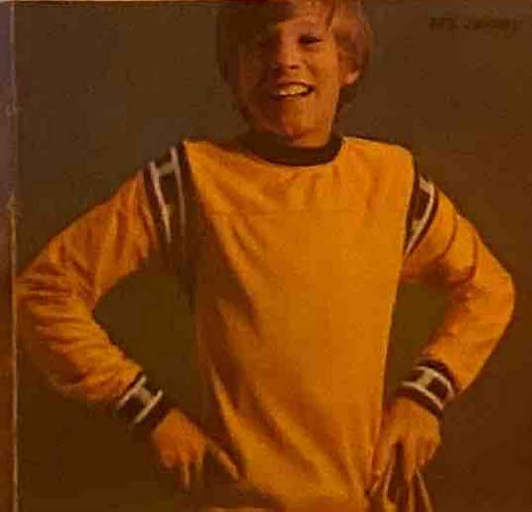
Quilted Protectors



MX Gloves



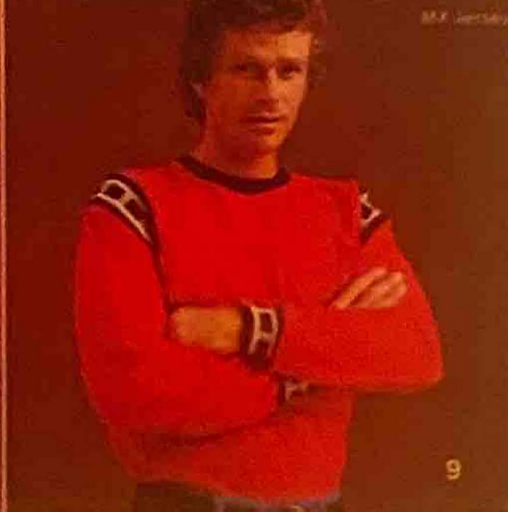
MX Jersey



MX Jersey



MX Jersey



MX Jersey

Here are accessories exclusively created for Yamaha street and touring enthusiasts.

Each item is easy to install on the intended Yamaha models.

With a minimum of installation time, effort and mechanical ability, they'll provide a maximum of stability and longevity.

These Yamaha accessories are beautifully detailed, and are made with a rich, dual nickel chrome plating.

The street line is a catalog in itself for building up your bike's body. For more functions, better performance, and better looks.

Oil Cooler Systems

The Yamaha Oil Cooler Systems are tested, retested and factory-approved. Each system actually increases transmission, clutch and engine life by preventing oil breakdown. Its Swirl-Cool core with inner swirling action directs hot oil through hundreds of tiny heat-extracting swirlpools to help your machine run smoother and cooler. The Yamaha Oil Cooler is easy to install, and includes all necessary mounts, precision one-piece chrome lines, special adapters, custom mounting brackets, and complete instructions.

Luggage Carriers

Yamaha Luggage Carriers fit Yamaha street bikes, perfectly. Each carrier is specifically designed for each model bike. Made from strong $\frac{3}{4}$ " steel, smooth welds, and a unique intaid vinyl strip for added style. Can be mounted singly, or with the Yamaha Sure Support Locking Back Rest.

Front and Rear Safety Bars

Custom designed to complement Yamaha street machines. Exclusively Yamaha, they've been completely tested and fit existing brackets using existing nuts and bolts. Sturdy dual nickel chrome plated 1" diameter steel tubing with smooth welds, electrically plated. Stainless steel screws and Nylock nuts are included for the front safety bars. Made in the U.S. for Yamaha street models 250 to 750 cc to strict Yamaha specifications.

Sure-Support Locking Back Rests

Yamaha's unique back rest has been tested for passenger comfort. Features a "locking" compartment - 2" deep - for carrying gloves, goggles, extra plugs or anything that makes touring more enjoyable. Highest quality $\frac{3}{4}$ " steel tubing with a rich dual nickel chrome plated surface makes this unit the strongest on the market today. Quilted vinyl padded rest follows seat pattern. Hurd Cam type locks and keys are standard. Mounts easily to existing brackets. For complete stability, this unit should go with the luggage rack. Exclusively engineered for Yamaha street models 250/750 cc.

Dual Disc Brake Kit

For stopping power whenever you need it. Compatible with single disc brake, it assembles easily and quickly, and includes a larger master cylinder, calipers, hydraulic brake lines, and all necessary hardware. Available for both TX 500 and TX 750 Yamaha motorcycles. Perfect for the cafe racer or road touring enthusiast.

Yamaha "Star Mag"™

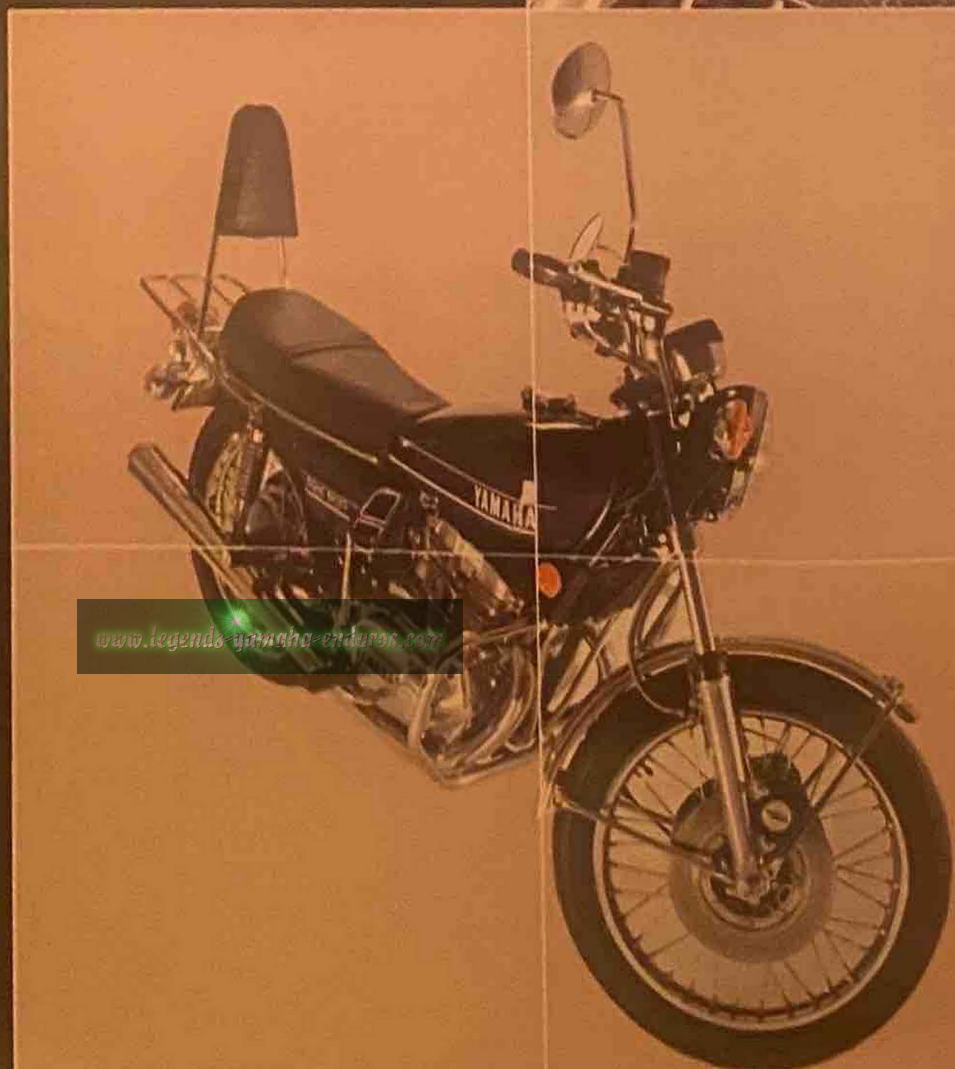
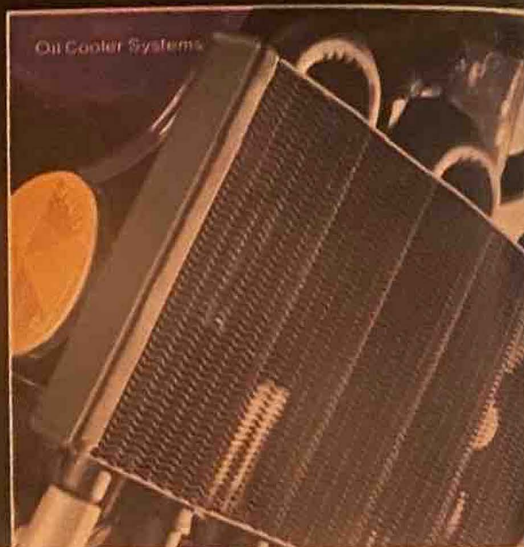
Designed by Carroll Shelby, bringing years of high performance racing and manufacturing experience into the motorcycle industry. The Yamaha "Star Mag"™ exceeds all test standards - and it's stronger than any stock spoke wheel. It bolts right on to your Yamaha forks, retaining all original equipment disc brakes, bearings, axles, speedo drive spacers, etc. No special adapters are required. It's lighter than standard wheels with increased strength and beauty. Machined surfaces match Yamaha Original Equipment for easy installation. The Yamaha Wheel

eliminates need for truing and adjusting spokes. Each wheel is perfectly concentric allowing you a more perfectly balanced wheel assembly and a smoother ride. Accepts tube or tubeless tires. (Here's your opportunity to add that customized touch.)

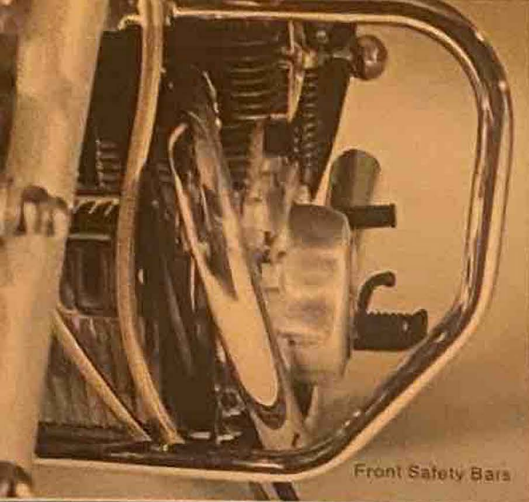
Touring Tank

Increases the cruising range of the touring enthusiast, with extended range capacity for the TX 750 and for the TX 500. Comes beautifully finished, and fits your standard seat perfectly.

THE STREET LINE.



www.legends-yamaha-enduros.com



Front Safety Bars

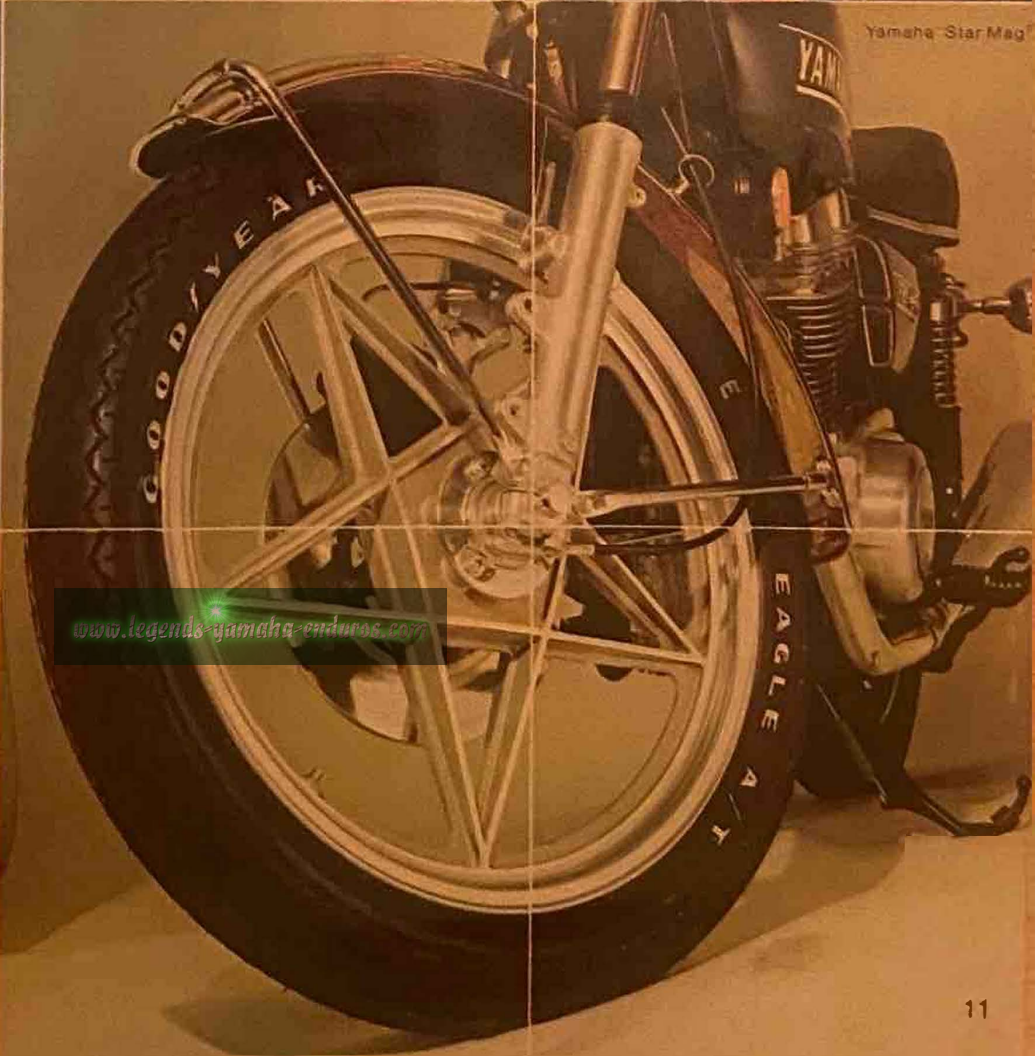


Sure-Support Locking Back Rests

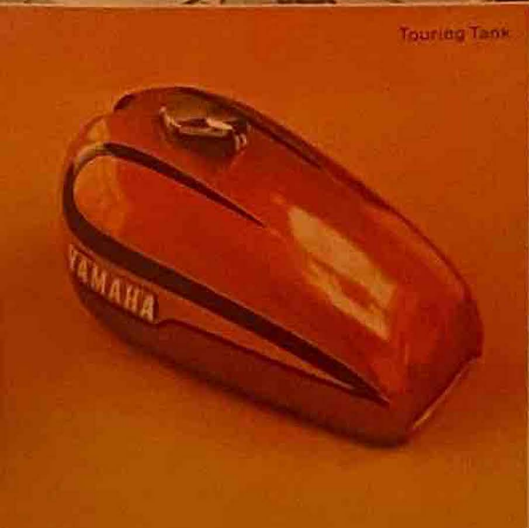
Luggage Carriers



Dual Disc Brake Kit



Yamaha Star Mag



Touring Tank

www.legends-yamaha-enduros.com

For protection with style, get your head in line.

Yamaha helmets give your riding look a colorful, graphic topper.

To see one of the biggest selections of helmets, goggles, visors and shields in motorcycling — stop at the mark of the line at your Yamaha dealer.

Goggles

Designed for automatic Venturi ventilation, Yamaha goggles offer optically polished lenses for optimum visibility. Meet or exceed VESC-8 regulations. Available in many models and colors with various lens choices.

Duckbill Visors

Duckbills add a new style to motorcycle safety. Easily attached to any helmet, snaps are provided with sliding positions. Injection molded high-impact plastic duckbills are shatterproof. In white or black.

Replacement Full-Coverage Shields

Designed for Yamaha Full-Coverage Helmets, these shields feature Dual Snaps that allow visor adaptation. Special snaps are also provided to allow "tear away" lenses to be attached. Yamaha Full-Coverage Shields are available in two colors this year — Clear and Smoke.

Bubble Shields

They're constructed of injection molded polycarbonate material, and have built-in opaque painted visors. They're VESC-8 Approved (the best approval any visor can get). Available in Smoke, Clear, Blue, Amber and Yellow. Fit all standard model helmets.

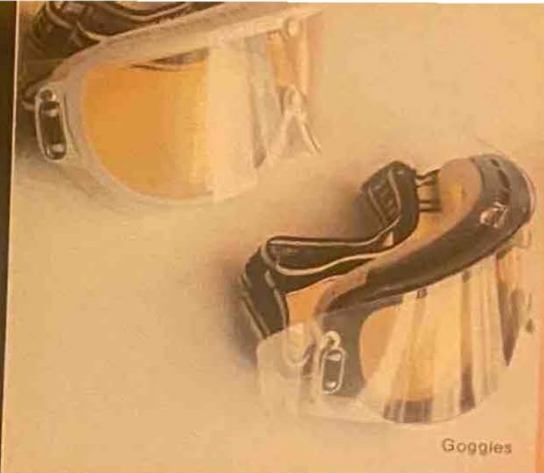
Yamaha Helmets

Whatever kind of machine you ride, and whatever your taste in color and style, there's a Yamaha helmet to meet your requirements.

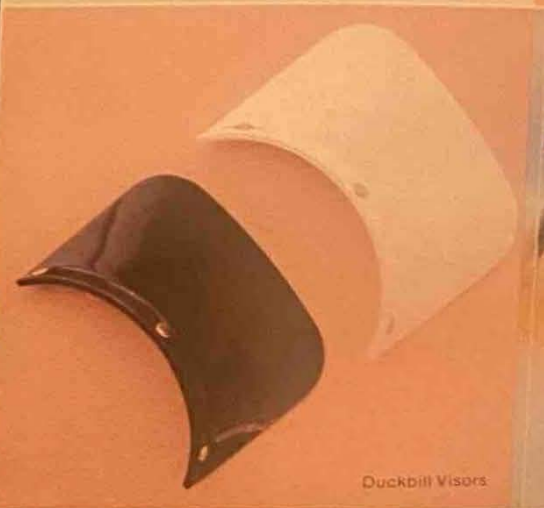
Yamaha helmets are available in one of the widest varieties of "looks" you'll find.

And each helmet offers top safety and quality. They're available in full-coverage or standard models. SHCA certified, Z90.1 approved, and all full-coverage models are also SNELL approved (the best approvals a helmet can get). The styling is patterned after the helmets worn by Yamaha Racers. All full-coverage helmets come standard with a flip-up face shield and tear-off mud lens. Yamaha helmets... for better looking protection.

THE HEAD LINE.



Goggles



Duckbill Visors



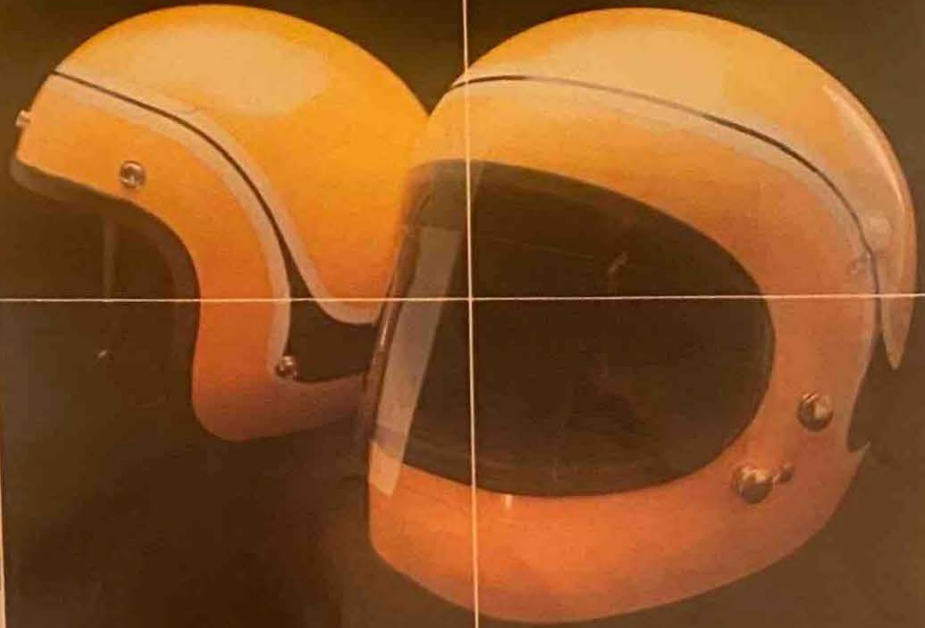
HELMETS, GOGGLES, VISORS,
AND SHIELDS



Goggles



Replacement Full-Coverage Shields



Yamaha Helmets



Duckbill Visors



Bubble Shields



www.legends-yamaha-enduros.com

These practical and exciting Enduro and Off Road accessories from Yamaha are beautifully crafted and easy to install.

They're made with fine materials to Yamaha's own design and high manufacturing specifications.

You can buy them with full confidence that they'll fit your Yamaha perfectly.

Super Silencer Spark Arrestor

The Yamaha Super Silencer/Spark Arrestor will reduce noise with virtually no power loss due to back pressure! It installs easily to most types of off-road and street bikes. Easily disassembled for cleaning and diaphragm replacement. Lightweight and designed for maximum strength under extreme vibration conditions. (Also available for many other brand machines.)

DT125/DT175 Buddy Seat

Designed to mount easily to the stock sub-carrier, this buddy seat has been approved by Yamaha engineers. Seat design complements the standard seat pattern and is manufactured from a high quality durable vinyl material. Interior construction is high-density foam over a heavy base. Included with each Buddy Seat are all necessary mounting brackets for easy and simple installation. This 125/175 Buddy Seat will fit many older Yamaha Enduros.

Dual Purpose Seat

Specially designed for the Yamaha TY-250 Trials bike, this seat assembly converts the single seat into a comfortable low-profile seat needed for trail riding. This new seat is lighter in weight than the stock seat and assembles without any modification whatsoever. The TY-250 Trial/Trail Seat (for dual purpose riding) is manufactured in the U.S.A. and comes with all necessary mounting hardware.

Engine Protector

It's a skid plate that will take all the abuse you can dish out. Especially engineered, tested and approved, this engine protector is the only one of its kind molded to the Yamaha TY250. Made of strong durable acrylic alloy plastic it is lighter and stronger than the traditional skid plate made from steel. Each engine protector is "formed" to protect the engine's side cases and absorb shocks. No modification is necessary; easy installation in minutes using existing mounts.

Metric Screw Kits

Exclusively manufactured for many Yamaha Street and Enduro motorcycles. Speeds removal and replacement of side case, clutch, ignition and other engine covers. Included are screws and necessary precision wrenches.

Enduro Route Chart Holder

The Enduro competitors' best friend. Super lightweight and virtually indestructible due to a special A.B.S. Plastic Housing. Weatherproofed to keep your chart clean and dry with a full 1 inch wide magnifying lens for easy chart

reading at almost any position. The holder mounts easily to the handlebars or cross bars. Paper chart feature loads like a camera and is easy to change from event to event with knurled rotation knobs to go forward or back.

Buddy Pegs

Yamaha Buddy Pegs fit Yamaha Street and Enduro motorcycles and other machines with 12mm Buddy Peg threads. They fold to tuck neatly out of the way when not in use and quickly flip down for passenger comfort. Rubber covered to match front pegs on all Yamaha models. Easily installed without any need for tools.

Fork Brace

For maximum strength with minimum weight, the Yamaha Fork Brace is manufactured from one of the highest strength aluminum alloys. Highly polished yet tough enough to stabilize forks over the roughest trails and desert terrain. Pre-drilled, double-loop concave fork brace fits all Yamaha Enduros, from AT to RT.

THE LINE GETS TOUGH.

Pierre Karsmakers MX Handlebars

A new design in handlebars by world renowned motocrosser Pierre Karsmakers, available through Yamaha dealers only. Completely designed, tested and approved by Pierre himself these bars feature an *exclusive* pad molded onto the cross member for safety. This pad meets D.O.T. specifications for auto dashboards. Each bar is steel shot peened for relief of stress and manufactured from aircraft quality chrome molly steel, and anodized for lasting quality. Includes a "personalized" decal with Pierre Karsmakers' signature!

Plastic Tank

Every owner of a Yamaha YZ, MX and Enduro should be eager to purchase this new and exclusive Yamaha Plastic Tank. Designed especially to fit 1973 and 1974 Yamaha models 250MX, 360MX, 500MX and 1975-1980 this plastic tank features a 1.7 gallon capacity. Made from strong cross-link plastic, this tank is much lighter than the stock tank. Special features are: yellow in color with a large non-leak plastic filler cap, nylon hold-down straps, a specially prepared decal package, special adaptor molded into the tank to accept a standard Yamaha MX petcock and will install in minutes without modifications. Tested by the Yamaha racing team, includes all necessary mounting brackets. (Special decal package is available separately.)

High-Mount Fender Assembly

Yamaha high-mount fenders have a memory: they snap back to their original shape! Engineered to fit all Yamaha Enduros. Feature highly polished, heavily chromed steel bracket and highly polished aluminum fender brace. Manufactured from a high-density copolymer material. All necessary bolts included for easy installation.

DT Enduro Luggage Carrier and Buddy Seat

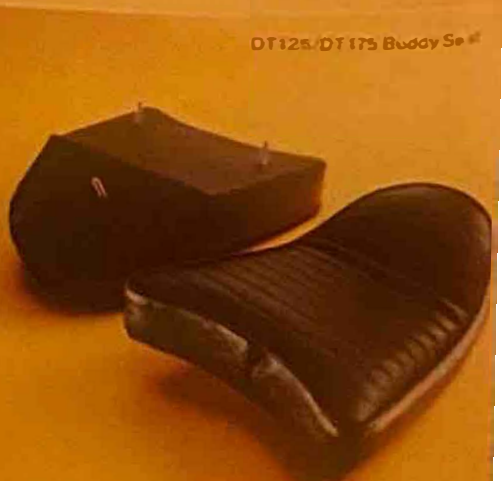
Use these items as a Buddy Seat/Luggage Rack combination or as a luggage carrier alone. The $\frac{3}{4}$ " tubing is double nickel chromed with smooth welds, and accented by a unique vinyl inlaid trim. Easy to mount, and designed with an A.B.S. high impact Styrene plastic formed recess back to protect the taillight. Birch plywood seat plate adds strength and durability. Vinyl quilted seat follows standard seat pattern for a complementary look. Available for 250, 360 and 400 Enduros.

MX Foot Pegs

Make competition and Enduro riding more enjoyable. Unique design eliminates slipping in rough or wet terrain. These self-cleaning pegs utilize the existing return spring, mount easily into existing brackets and are supplied with self-locking Nylock nuts. Black oxide protective finish lends complementary beauty to the machine.



Super Silencer/Spark Arrestor

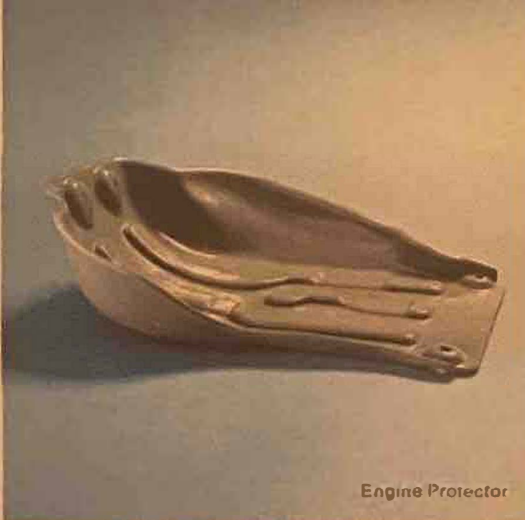


DT125/DT175 Buddy Seat

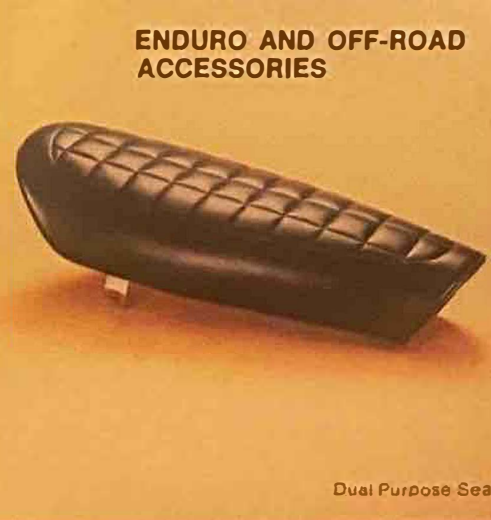
ENDURO AND OFF-ROAD ACCESSORIES



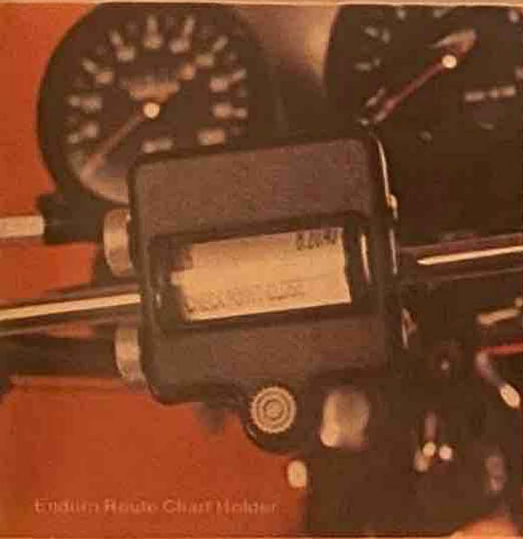
Metric Screw Kits



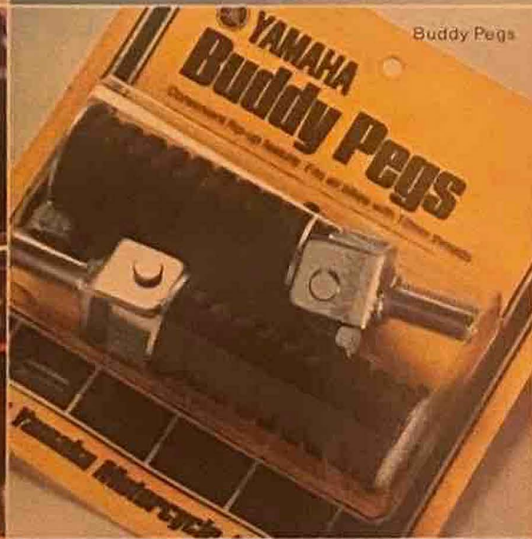
Engine Protector



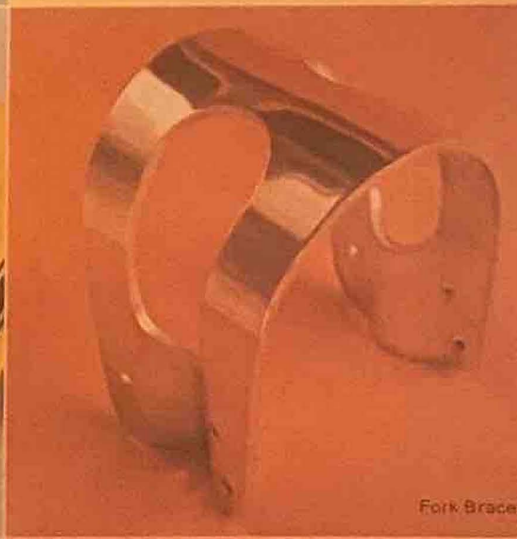
Dual Purpose Seat



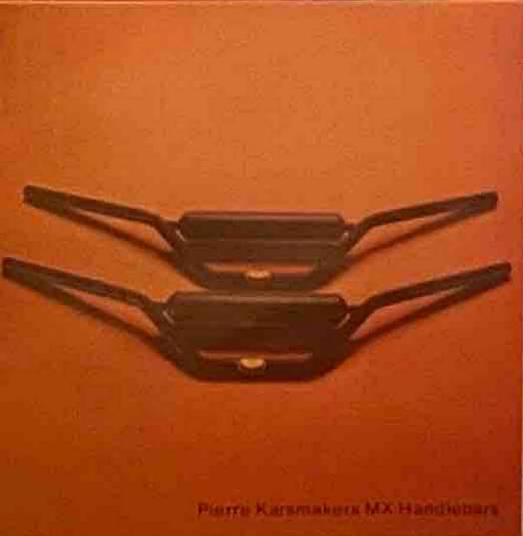
Enduro Route Chart Holder



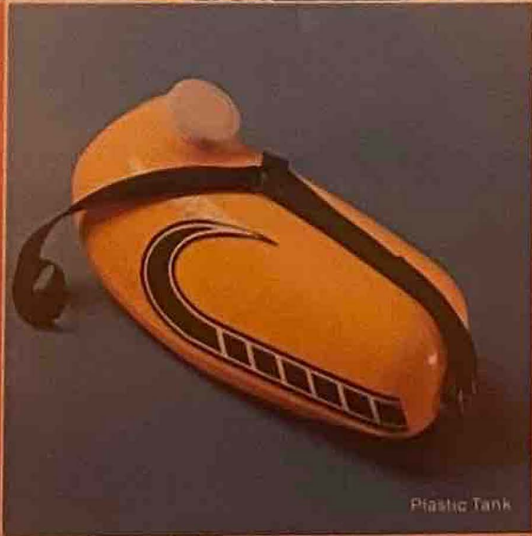
Buddy Pegs



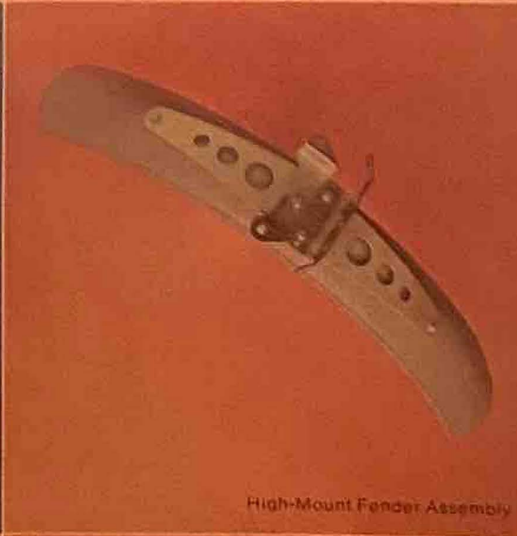
Fork Brace



Pierre Karsmakers MX Handlebars



Plastic Tank



High-Mount Fender Assembly

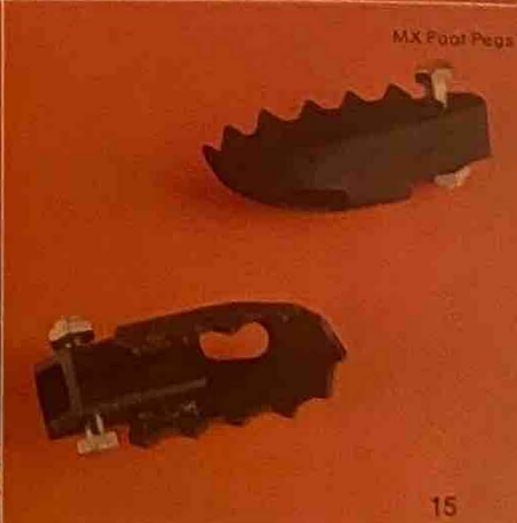


Enduro Luggage Carrier



DT Enduro Luggage Carrier and Buddy Seal

www.legends-yamaha-enduro.com



MX Foot Pegs

Make the most of your bike vacation and general riding enjoyment, with helpful transport and carry-along gear from Yamaha.

Many of these items are totally unique in the cycle market.

And all are excellent values.

See them at your nearby dealer's display with the yellow sign of the line.

The Yamaha Cycle Camper™ by Morse

This is a total living system containing everything necessary for extended motorcycle camping.

The Camper is designed to fit on the 1973, 1974 and 1975 Yamaha 250, 350 and 500 street machines, as well as on the 1974 and 1975 250, 360 and 400 Yamaha Enduros.

Included is a specially designed motorcycle tent, which consists of an inner tent and an outer fly tent.

Another prime ingredient of the system is the sleeping bag, modified mummy type, with European hood, filled with polarguard for comfortable sleeping warmth down to approximately 20°F.

The carrying rack consists of a steel frame over which is stretched the waterproof vinyl pack.

The motorcycle rack, to which the carrying rack is attached, telescopes according to whether the motorcycle is carrying one person, or two (on RD350A and TX500A models). The one-up rider may slide the unit close behind, while the motorcycle camping couple can extend the camper out over the rear fender where it offers back support.

Other items of camping gear include a butane cooking stove and fuel bottle. And a 5-piece cook kit of extra heavy-duty spun aluminum.

All of the gear fits easily inside the vinyl carrying pack with space left over to include another sleeping bag, food, clothing, etc.

Assembly and installation are simple tasks requiring less than an hour.

The Yamaha Cycle Camper is now being test marketed in certain areas. Ask for its availability at your Yamaha dealer.

Yamaha Tie Down Straps

The finest tie-downs for securing almost anything, including your motorcycle. Features 2" wide double-stitched extended length belts, made of polypropylene webbing with 3,000 pound tensile strength. The two 3/4" steel hooks are large enough to let you attach them to almost any part of your machine, and hold it securely. One hook is nylon coated to prevent slipping and scratching. The large handle aids insure cinch tie-downs and releases quickly, even when wet.

Utility Bag

Large 8 1/2" diameter Utility Bag has sufficient room to store extra clothes, goggles, tools, fishing tackle or any item that you want to take along. This Utility Bag is 14 inches in length with a full

length 12 inch zipper. Upholstery grade nylon construction throughout with double stitched seams and extra leather backing at all stress points for added strength. Attaching to luggage carriers or handlebars is easy.

Loading Ramp

This sturdy 6' long, 8" wide loading ramp will greatly simplify the process of getting your bike out and down and ready to ride. Safe and convenient to store, it's a must for dirt and competition riders. Formed from one single piece of high-grade aluminum with self-cleaning center ramp and stress load of 500 lbs.

Chain Repair Tool

The perfect tool for emergency chain repair when you're touring or off-road riding. Manufactured from heat treated chrome moly steel the Yamaha Chain Repair Tool is small enough to fit into a standard tool kit, the Enduro Tool Pouch, or in your pocket. Designed to fit most size chains for street or off-road usage, this Tool features an Allen head "fully hardened" pin and an Allen wrench included.

Retractable Tie-Down Hooks

Give your transport vehicle that custom installation look with the most handsome and modern motorcycle tie-down hooks on the market. Fit practically any surface. Spring loaded hook fits flush to the surface of your vehicle to avoid high standing obstacles such as eye bolts. Especially designed for trailers, vans, campers and pick-ups. Double nickel chromed top is corrosion resistant. Set of two.

Stretch Cords

Yamaha Stretch Cords are the strongest cords an outdoor enthusiast can buy. These 10mm heavy-duty multi-stranded neoprene rubber cords are covered with solid black double-braided thread, and guaranteed colorfast. The all-steel hooks are plastic coated. Cords are available in the following styles: 2 hook 18", 2 hook 24", 4 hook 12".

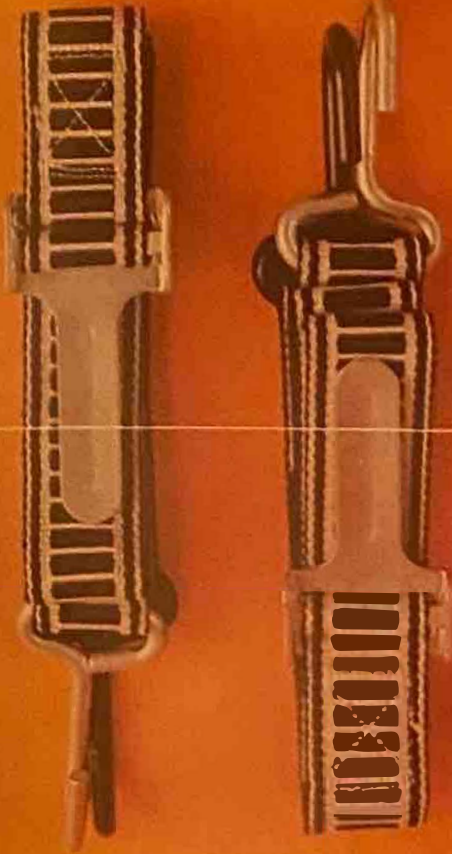
Enduro Tool Pouch

Now you can take along those extra little things in a handy tool pouch made from 100% latigo leather. Designed and tested for durability and precise fit this Yamaha specialty will easily mount to Yamaha MX's and Enduros and many other off-road machines. Featuring almost 300 cubic inches of storage space it is specially molded to mount tight behind the seat and buckles to the frame.

TRAVEL THE LINE.



CAMPING, TOURING, TRANSPORT
AND CARRY-ALONG GEAR



Yamaha Tie-Down Straps



Utility Bag (Assembled)



Utility Bag



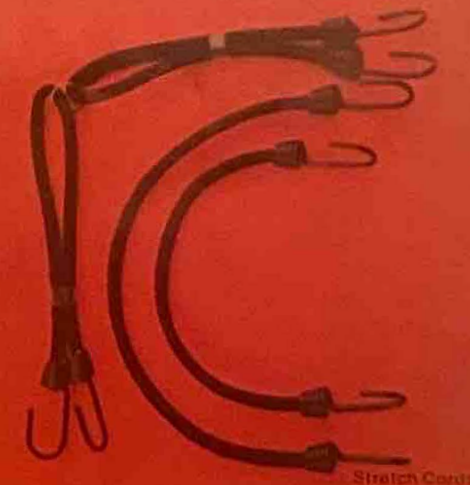
Chain Repair



Loading Ramp



Retractable Tie-Down Hooks



Stretch Cords

Enduro Tour Pack

www.legends-yamaha-enduros.com



Ride securely — with the line under you.

You'll find a full selection of fine motorcycle tires, batteries and service accessories at the line display at your dealer.

D.I.D. Alloy Rims

These super strong, lightweight rims keep un-sprung weight to an absolute minimum. They've been Yamaha Moto-cross Team approved and researched. They're the same precision rims standard on Yamaha YZ Racing machines. Highly polished and manufactured from the finest aluminum alloy. Pre-drilled for easy "lacing". Completely compatible with Yamaha hubs. Deep knurling prevents tire slippage. No rim-side lip to catch and hold dirt. It's the "trick" things that give you that competitive edge.

Batteries

Manufactured by the largest companies in Japan. Names like Yuasa, Furukawa and G. S. make our batteries to fit your machine. Each battery is built into a strong plastic case to insure long and dependable service. Yamaha has the battery for that hard to find "older" model too.

Spark Plugs

The same spark plugs that give superior performance and are standard on Yamaha motorcycles are available for replacement purposes. Choose from NGK or Champion brand plugs for miles of trouble-free riding enjoyment.

Goodyear Tires

Choose from 16 different sizes and styles to suit your kind of riding — MX, Street, Racing, touring, or general riding. A new "computer" tread design sets apart Goodyear Eagle Tires — the current winner of the Baja 1,000. Also — the new Raised-White-Letters design is now available on some models.

Full Tire Selection

Tires are manufactured for Yamaha by some of the world's largest tire and rubber companies. Names like Yokohama, Nitto Dunlop, Inoue and others supply the perfect size to fit Yamaha motorcycles and other brands.

Tube and Rim Bands

Insist on the right Tube and Rim Band each time you change your tire. Your Yamaha dealer has just the right size to keep you rolling along with confidence.

21" Wheel Assembly

This complete 21" front wheel assembly makes conversion from smaller wheels easy. Improve the handling of Enduros with smaller front wheels. Complete wheel assembly has complete hub and is ready to mount. Available for DT, RT, AT and CT models. Complete with tire and tube and fully laced.

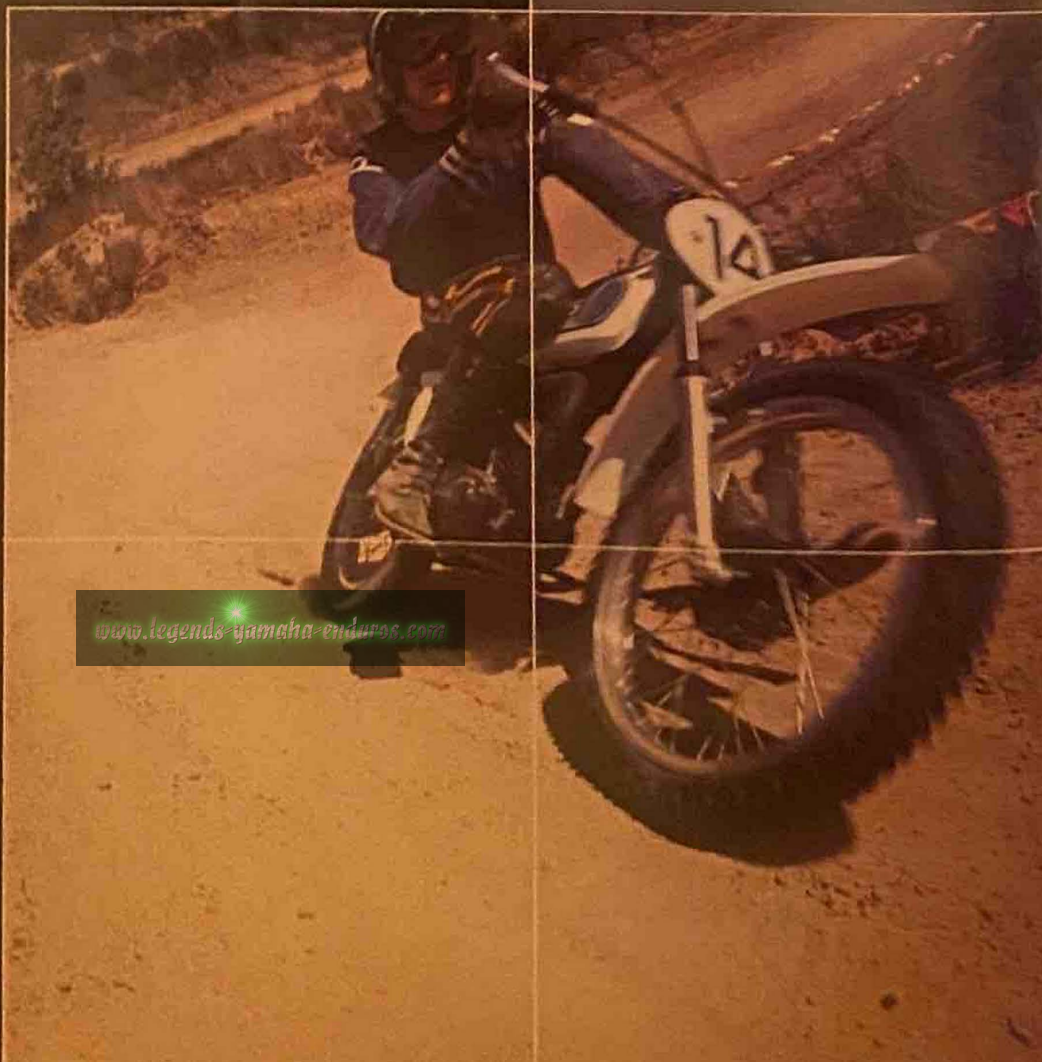
Impact Driver Set

A welcome tool specialty for mechanics and do-it-yourselfers. Especially for motorcycle work. Contains 4 bits (two Phillips head, two conventional head). The $\frac{3}{8}$ " drive unit is heavy polished steel. Reversible feature makes removing or installing screws a snap! With complete instructions.

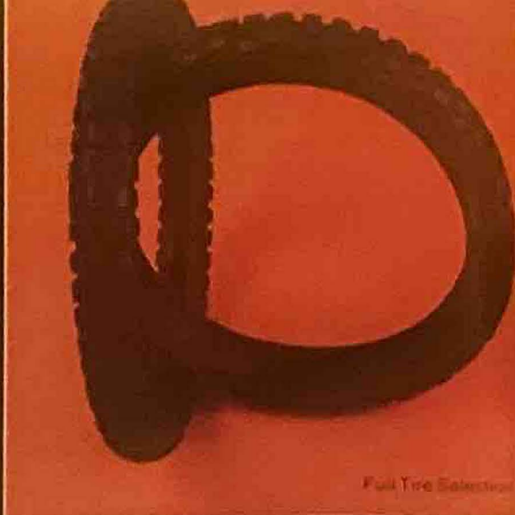
Thread Repair Kit

Repairs stripped spark-plug receptacles. Kit includes tap for re-threading stripped receptacles. For receptacles that can no longer take a thread, kit includes a box of 20 liners. Use tap to cut new threads in spark plug receptacle, and insert a liner into threaded receptacle. Extra thread inserts available in two sizes: 14mm x $\frac{1}{2}$ " and 14mm x $\frac{3}{4}$ ". Great for the "do-it-yourselfer."

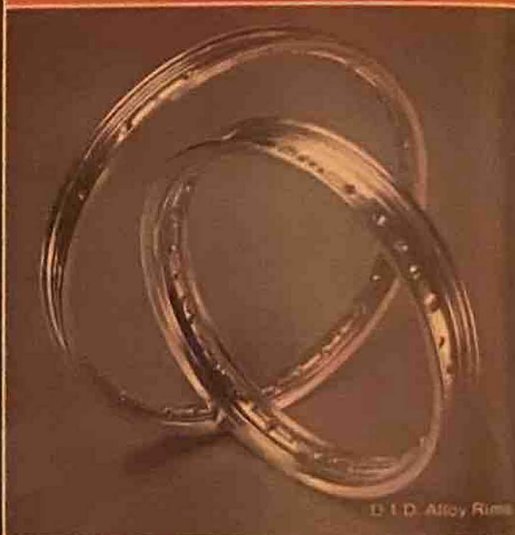
UNDERLINE PERFORMANCE.



www.legends-yamaha-enduros.com



Full Tire Selection

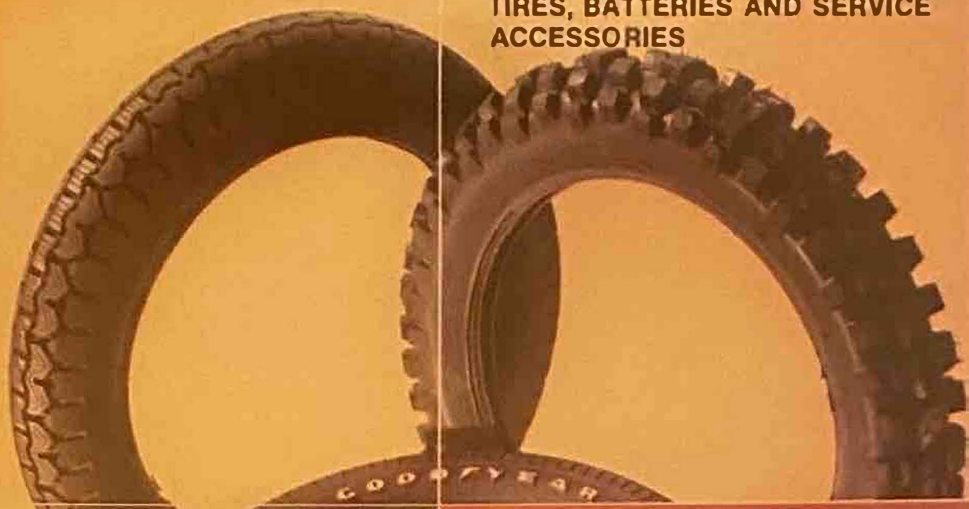


D.I.D. Alloy Rims

TIRES, BATTERIES AND SERVICE ACCESSORIES



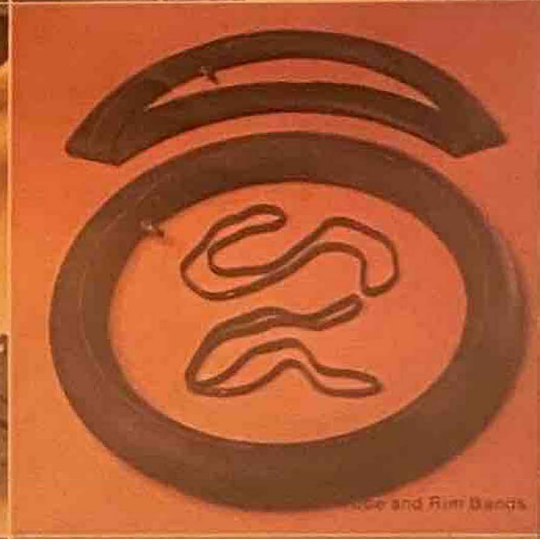
Batteries



Goodyear Tires



Spark Plugs



Tire and Rim Bands

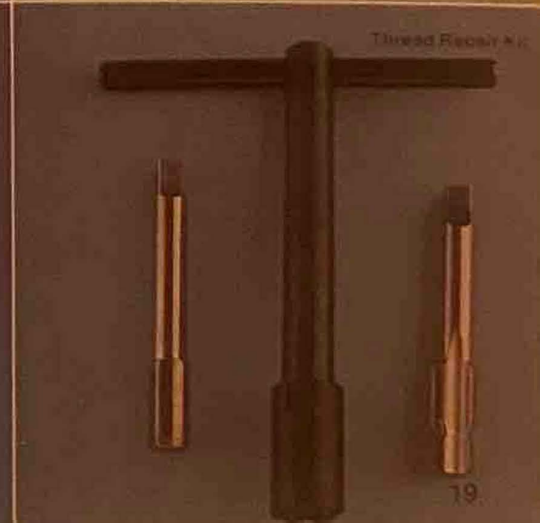
31 Wheel Assembly



www.legends-yamaha-creduros.com



Impact Driver Set



Thread Repair Kit

Your Yamaha dealer has all the important oils, lubricants, paints, etc. you'll need in stock.

These products incorporate special formulations that are ideal for the motorcycle owner.

They're made under strict quality control conditions, and they've all been tested and retested by Yamaha engineers and by thousands of Yamaha motorcycle owners.

Yamalube 2-cycle Oil

Specially formulated ashless detergent motor oil with rust inhibitor. Gives your Yamaha 2-stroke motorcycle peak power and performance, longer engine life, and lasting dependability. Makes engine starting easy in any weather. Protects engine against corrosion when it's running or when it's not. Particularly suitable for the Yamaha Autolube system. It's the only oil you should use in your Yamaha 2-stroke.

Yamalube 4-cycle Oil

New, Yamalube 4-cycle oil is highly fortified with detergent-dispersant, rust inhibitors, anti-sludge and varnish anti-wear additives. An SAE 20W-30-40 weight multi-viscous oil for use in any 4-cycle engine or transmission. Excellent for other uses, in automobiles, trucks, buses, tractors and diesel-powered engines. Its ashless formula minimizes wear, ring sticking, piston burning, combustion chamber deposits and spark plug fouling.

Spark Plug and Electrical Contact Cleaner

Help keep your motorcycle in top running condition. Used regularly on points and plugs, prevents carbon build-up and dirty points. Spray it on, it cleans then evaporates.

Fork and Shock Oil

In 7.5, 10, 20, 30 or 40 weight in handy 16 ounce (1 pint) cans to suit any machine or rider. Designed to fine-tune suspension units for all operating conditions or climates. Weights may be blended with each other to achieve optimum performance for individual riding needs. These oils afford uniform performance over extended periods by minimizing viscosity changes, thus stabilizing handling characteristics. Prevent foaming, rusting, oxidation and wear. Increase seal life and eliminate seal cracking, swelling or drying. For use in all brands of front forks and shocks. Used and endorsed by the Yamaha International Racing Team.

Original-Color Paint

Factory colors to match or repaint your motorcycle. Yamaha Paint is available in 12½ ounce cans in a case of 12 cans. It is easy to apply when the directions are followed. Choose from many different colors for '73-'74-'75. Easy paint combinations (it may take one or

more colors to match a particular color) are quickly defined on the new Yamaha Paint Chart.

Tire Mounting Lubricant

Tube damage is almost a thing of the past. Just spray on tire beads and mount easily onto the rim. Tire mounting lubricant helps keep rubber soft and helps prevent deterioration.

Armor All

Armor All is a product with one thousand and one uses to preserve just about everything on everything. Effectively prevents cracking, checking and hardening and greatly extends the life of tire side walls, leather and vinyl upholstery or apparel, ignition wiring and many other items. The unique Armor All formula gives a "sparkle new" appearance to almost any surface or area.

Yamaha Power Cable Injector

This new injector is a real breakthrough that revolutionizes cable lubing. Completely cleans and relubricates cables in one easy step. Clean, quick and efficient, fits all motorcycle cables to

"blast out" gummy oil. Ask your Yamaha dealer for a demonstration — you have to see it in action to believe it.

Service & Repair Kit

By Loctite®. Contains Klean 'n Prime, Stud 'n Bearing Mount, Lock 'n Seal and Fit All. Packed in a handy plastic pouch for easy carrying. All the necessary items for the do-it-yourselfer. Fits neatly and easily into a coat pocket, Yamaha Utility Bag or Locking Back Rest.

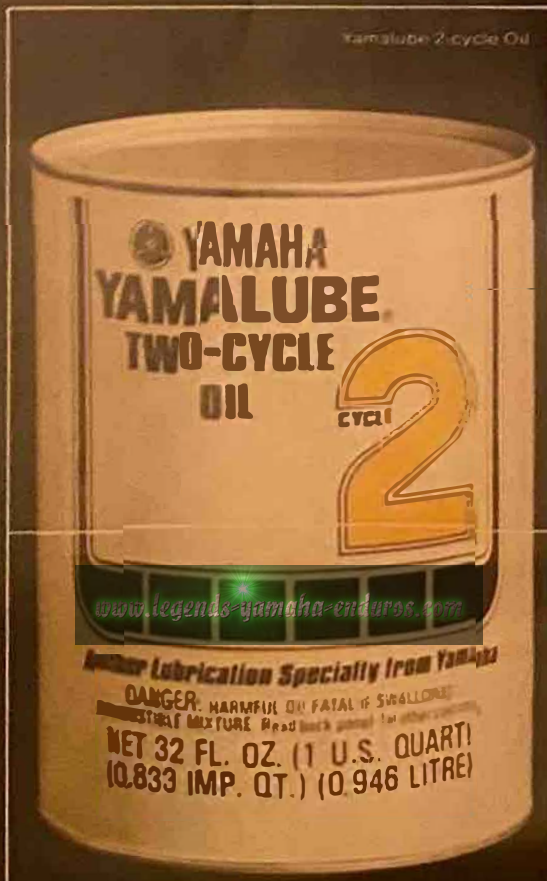
Instant Spare Tire

It's a spare tire in a can. You can fix a flat quickly and easily by spraying the contents of this 6-ounce aerosol can into the tire. It seals and inflates the tire in one simple operation. Handy inflation attachment screws onto valve stem for complete operation.

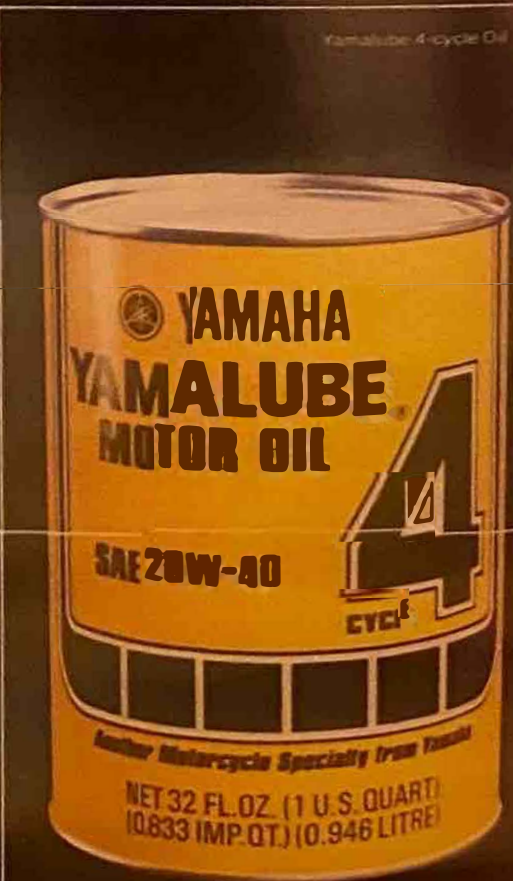
Chain and Cable Lubricant

The finest lube for chains and cables. Its penetrating action keeps on working even during extreme pressures. Dirt won't get by and water is completely resisted. Helping to prevent rust and corrosion is only one of the many benefits of using Yamaha Chain and Cable Lube regularly. Great when used with the new Yamaha Power Cable Injector.

THE LIQUID LINE.



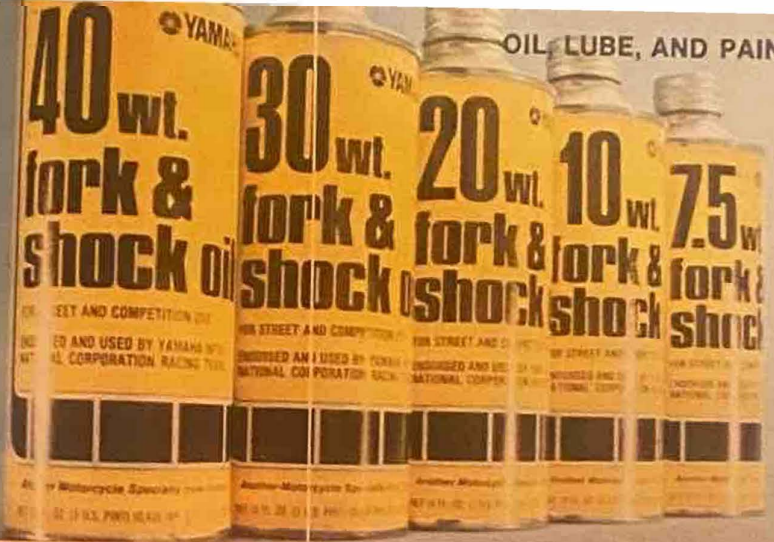
Yamalube 2-cycle Oil



Yamalube 4-cycle Oil



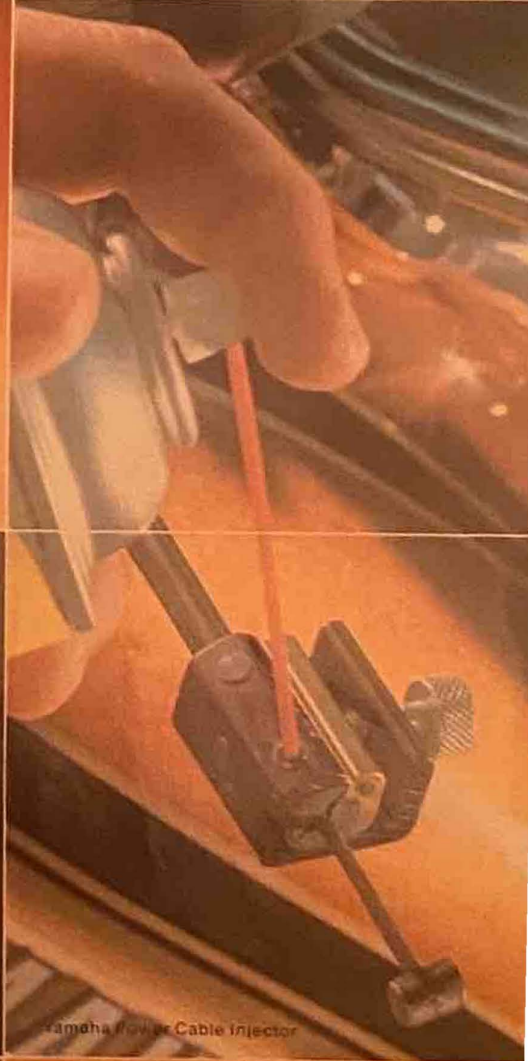
Electric Contact Spark-Plug Cleaner



Fork and Shock Oil



Original-Color Paint



Yamaha Power Cable Injector



Tire Mounting Lubricant



Armor All

Service and Repair Kit



www.legends-yamaha-enduro.com



Instant Spare Tire

Chain and Cable Lubricant



Here are some items that your riding enthusiast friends would love to receive on their birthday, wedding night, or under their pillow.

(It's OK to treat yourself to some, too.)

Action T-Shirts

In MX, Dirt Track or Road Racing versions. 100% cotton, short sleeves, and available in the usual adult sizes and special small sizes for ladies and kids.

Pen and Jewelry Sets

Both items make beautifully boxed, long lasting presents. The Yamaha Tuning Fork Mark is tastefully utilized on each component. The pen is made by Cross with 12 kt. gold filling.

Sun Visor and Sport Hat

A competition Sun Visor, great for pits or picnic, in bright Yamaha yellow. The hat has a baseball type design with an extra long bill to keep the sun out of your eyes.

Mug and Ashtray

Two very stylish items. The ashtray is helmet shaped, and it's so popular even your honest friends will try to steal it. The mug is a racy way to serve coffee and also makes a great jar for starting sweet potato plants.

Patches

Use them anywhere and everywhere. A great gift because they're so totally flexible. There's a wide variety to choose from, in luscious bright colors.

Playing Cards, Key Ring

Now you and your friends can have sharp looking playing cards to keep them busy while on those long overnight camping trips. The Key Ring even makes losers feel like winners when they proudly open their door without a fumble.

2-Piece Rain Suit

Here's great emergency protection against the elements while riding, in high visibility yellow. Also makes a fabulous pair of pajamas for camping in rainstorms and blizzards. Folds into a small pouch for easy storage.

Lighters

They're how Yamaha enthusiasts light-up. These handsome lighters are available in regular or butane.

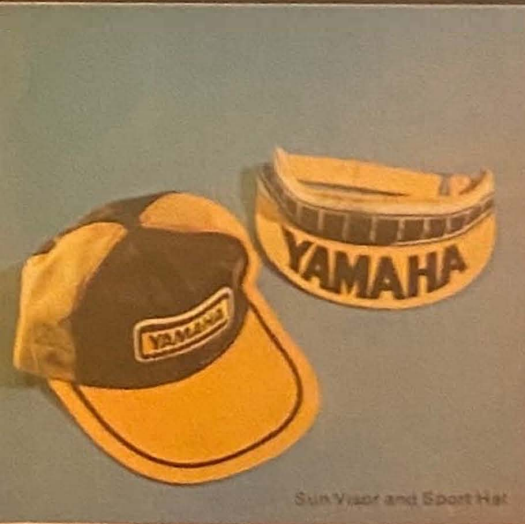
THE GIFT LINE.



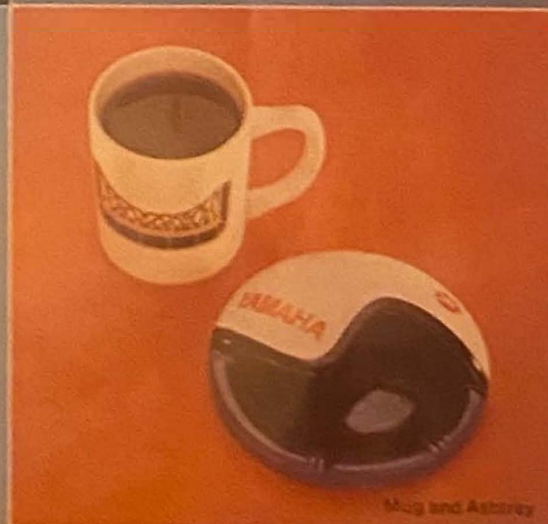
Action T-Shirts



Pen and Jewelry Sets



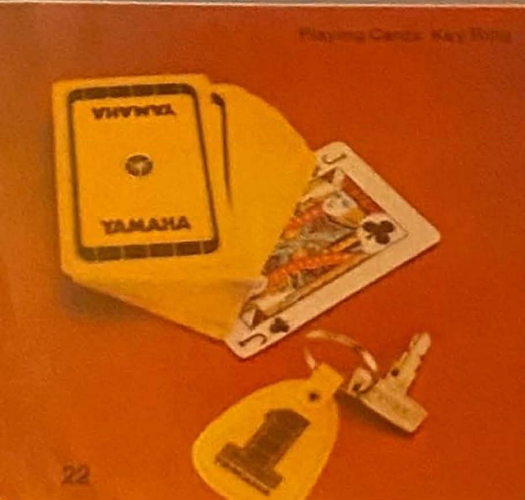
Sun Visor and Sport Hat



Mug and Ashtray



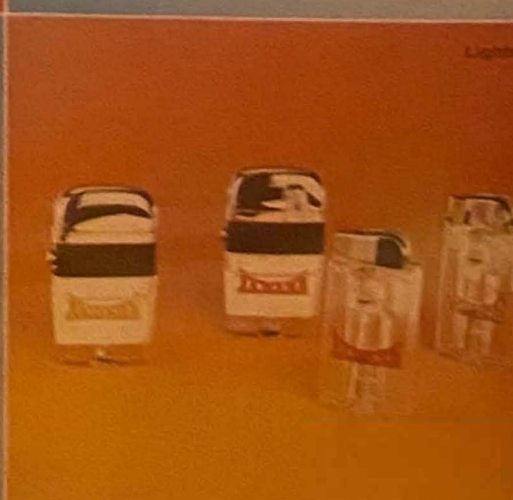
Patches



Playing Cards, Key Ring



2-Piece Rain Suit



Lighters

www.legends-yamaha-enduros.com

The Young Moto Biking Enthusiast now has a complete collection of accessories, apparel and replacement parts ready for his kind of action. There are the graphic fashions with the same design the motorcyclists wear; tank tops, jerseys and crew neck shirts, all in special young sizes. Also available are a selection of helmets and goggles in children's sizes. And specialty items every motobiker will need, like Tire Mounting Lube, Instant Spare Tire, Chain Lube, and Armor All. Plus two special tires from Goodyear: the Moto-Bike Tube and the Moto-Bike Knobby Tire. Now at your dealer's yellow sign of the line.

THE MOTO-BIKE LINE.



www.legends-yamaha-enduros.com

Now that you've seen all the reasons to get in Line for '75, we'd just like to remind you where to do it.

Just look for the mark of the line at your Yamaha dealer.

If you don't find what you want on display, ask.

Your dealer may have what you want in stock, or he'll be able to order it for you and get it quickly.

Enjoy good riding in the coming year, and keep your bike (and you) in line!

THE FINISH LINE.



Litho in U.S.A. Lit-10084-00-05

Specifications subject to change without notice.

**YAMAHA PARTS
DISTRIBUTORS, INC.**
6610 Orangethorpe Avenue
Buena Park, California 90620



111221721** 12858
BOLTCH G
1534 SCOTT RD
PORT WASHINGTON WI 53074

www.legends-yamaha-enduros.com