

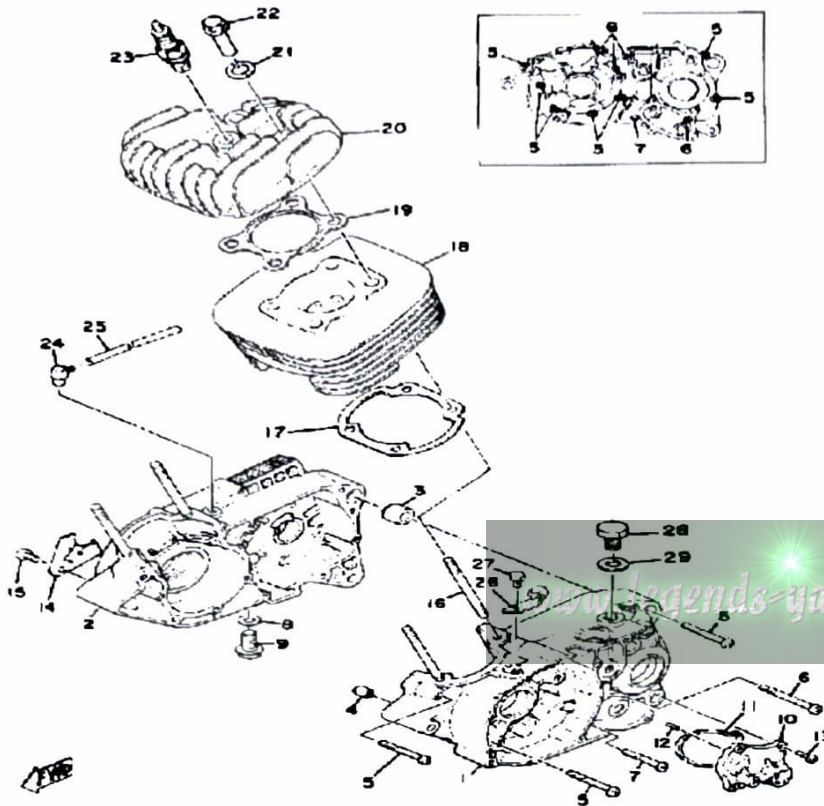


YAMAHA

**GENUINE
PARTS CATALOGUE
MOTORCYCLE**

www.legends-yamaha-enduros.com

CRANKCASE-CYLINDER

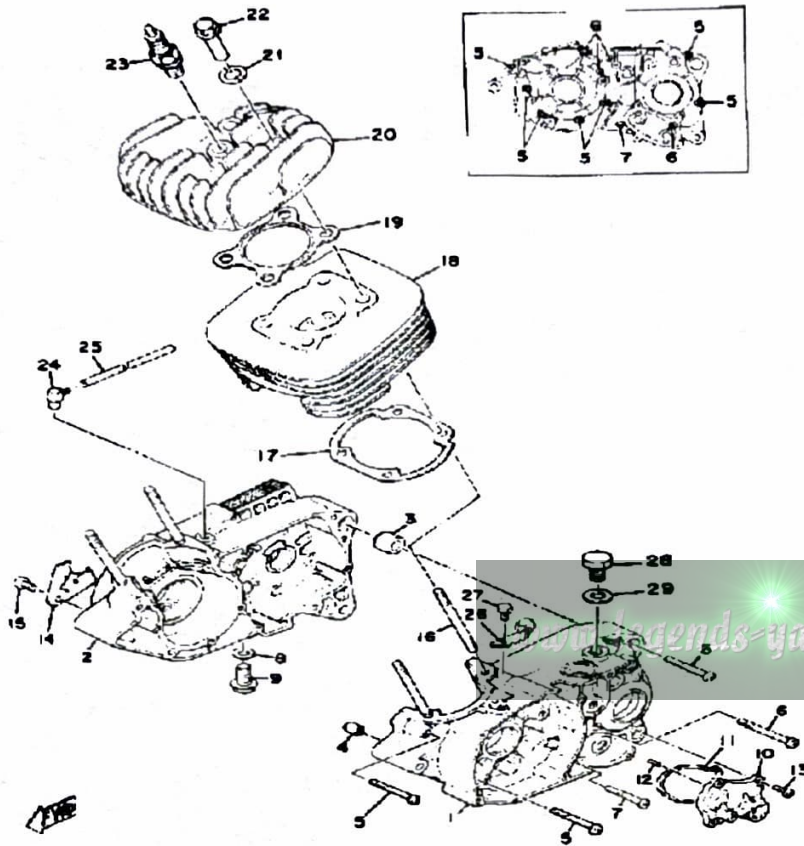


Ref. No.	Part Number	Description	Qty	Remarks
1	1T9-15111-00-00	CRANKCASE 1	1	
2	1T9-15121-01-00	CRANKCASE 2	1	
3	99530-14016-00	PIN, DOWEL	1	
4	99530-10014-00	PIN, DOWEL	1	
5	98580-06550-00	SCREW PAN HEAD (92503-06050)	7	
6	92580-06560-00	SCREW PAN HEAD	4	
7	98580-06040-00	SCREW, pan head (92501-06040-00)	1	
8	90430-12207-00	GASKET	1	
9	90340-12005-00	PLUG, DRAIN	1	
10	437-15419-01-00	COVER, SHIFTER 1	1	
11	401-15449-00-00	RING, RUBBER	1	
12	93603-12007-00	PIN, DOWEL	2	
13	98503-06014-00	SCREW, PAN HEAD (92502-06016)	4	
14	304-15128-00-00	HOLDER	1	
15	92501-08010-00	SCREW, PAN HEAD	1	
16	90116-08065-00	BOLT, STUD	4	
17	3UL-11351-00-00	GASKET, CYLINDER	1	
18	1T9-11311-00-00	CYLINDER 1	1	
19	304-11181-70-00	GASKET, CYLINDER HEAD 1 ..	1	
20	1T9-11111-00-00	HEAD, CYLINDER 1	1	
21	90201-12362-00	WASHER, PLATE	4	
22	90179-08303-00	NUT	4	
23	NGK-B7ES0-00-00	NGK B7ES 10PK (94701-00044)	1	
24	583-15371-00-00	BREATHER	1	
25	90445-07176-00	HOSE	1	
26	401-15441-02-00	HOLDER, CLUTCH CABLE ...	1	
27	97013-06012-00	BOLT	1	

ENGINE TYPE		2-Stroke, Air Cooled, Reed Valve
Bore/Stroke/Number Cylinders/Displacement (cc)		52 / 45.6mm / 1 / 97cc
Compression Ratio/Compression Pressure min~max		8.7:1 / N/A
Spark Plug Type		NGK B-7ES
Spark Plug Gap / Torque / Cap S ₂		0.6 ~ 0.8mm / 2.3 m kg / φ
TORQUE VALUES		
Cylinder Head:		8 x 1.25: 2.5 m·kg
Oiling System		Autolube
Capacity: Dry		1.0 Lit.
Lubricant: Temp above 5°C (40°F)		Yamalube 2°
Below 15°C (60°F)		Yamalube 2°

CONTINUED ON NEXT FRAME ►

CRANKCASE-CYLINDER

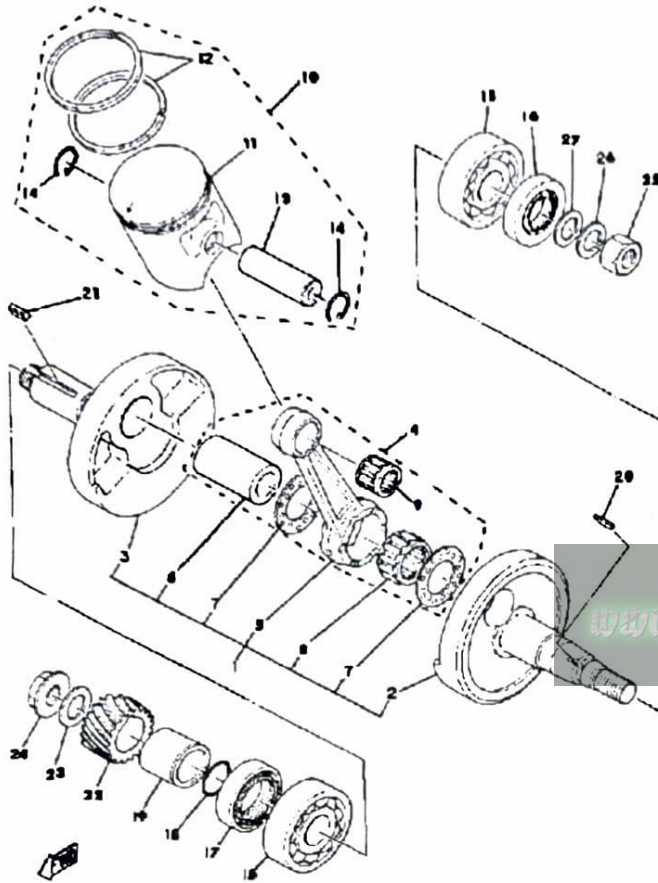


Ref. No.	Part Number	Description	Qty	Remarks
28	90340-12004-00	PLUG, STRAIGHT SCREW	1	
29	37R-82543-00-00	GASKET	1	

ENGINE TYPE	2-Stroke, Air Cooled, Reed Valve
Bore/Stroke/Number Cylinders/Displacement (cc)	52 / 45.6mm / 1 / 97cc
Compression Ratio/Compression Pressure min~max	8.7:1 / N/A
Spark Plug Type	NGK B-7ES
Spark Plug Gap / Torque / Cap Ω	0.6 ~ 0.8mm / 2.3 m·kg / \emptyset
TORQUE VALUES	
Cylinder Head:	8 x 1.25: 2.5 m·kg
Oiling System	Autolube
Capacity: Dry	1.0 Lit.
Lubricant: Temp above 5°C (40°F)	Yamalube 2*
Below 15°C (60°F)	Yamalube 2*

CRANKSHAFT-PISTON

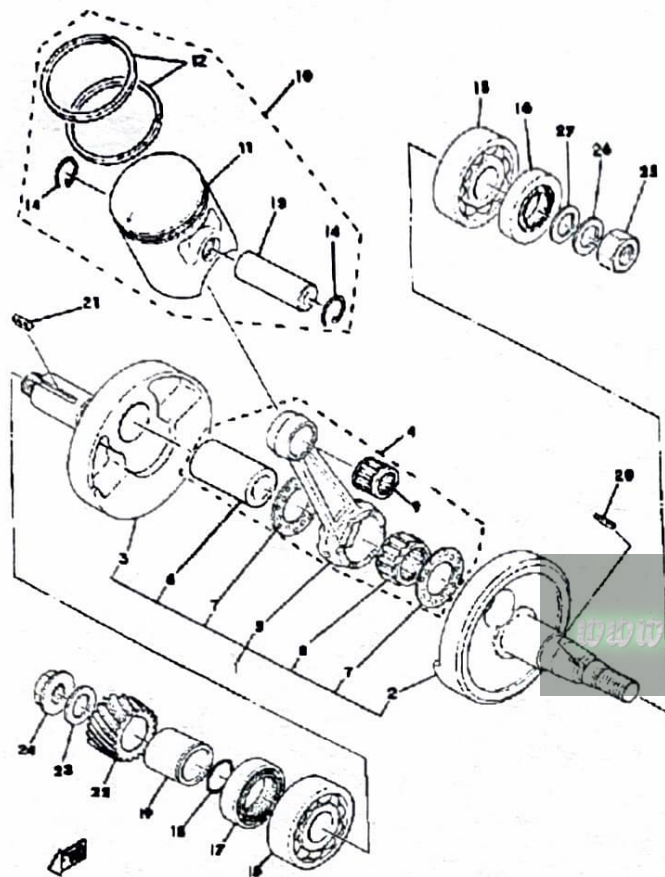
Ref. No.	Part Number	Description	Qty	Remarks
1	558-11400-00-00	CRANKSHAFT ASSEMBLY ...	1	
2	558-11412-00-00	. CRANK 1	1	
3	(558-11422-00-00)	CRANK 2	1	
4	1M7-11650-00-00	. CONNECTING ROD ASSEMBLY (558-11650-01) ..	1	
5	1M7-11651-00-00	. ROD, CONNECTING	1	
6	5E2-11681-01-00	. UNAVAILABLE IN PRICE BOOK	1	
7	90209-22248-00	. WASHER	2	
8	93310-422E7-00	. BEARING	1	
9	93310-21403-00	. BEARING	1	
10	558-11630-00-00	PISTON KIT STD	1	
11	558-11631-01-96	. PISTON STD	1	
12	558-11610-00-00	. PISTON RINGSET STD	1	
13	131-11633-00-00	. PIN, PISTON	1	
14	93450-15023-00	. CIRCLIP	2	
15	93306-30421-00	BEARING (B6304C3)	2	
16	93102-20447-00	OIL SEAL	1	
17	93103-28011-00	OIL SEAL	1	
18	93210-180A6-00	O-RING	1	
19	90387-20175-00	COLLAR	1	
20	90280-03017-00	KEY, WOODRUFF	1	
21	90282-05005-00	KEY, STRAIGHT	1	
22	336-16111-00-00	GEAR, PRIMARY DRIVE (19T) .	1	
23	90208-12015-00	WASHER, CONICAL SPRING ..	1	
24	90179-12244-00	NUT, SPEC'L SHAPE	1	
25	90170-12175-00	NUT	1	
26	92901-12100-00	WASHER, SPRING	1	
27	558-11610-10-00	PISTON RINGSET 1ST (1ST O.S.)	1	



Piston Skirt Clearance new/max.	0.035 ~ 0.040mm / 0.1mm
Ring End Gap Top/2nd/3rd	0.3 ~ 0.5mm / 0.3 ~ 0.5mm / φ

CONTINUED ON NEXT FRAME ►

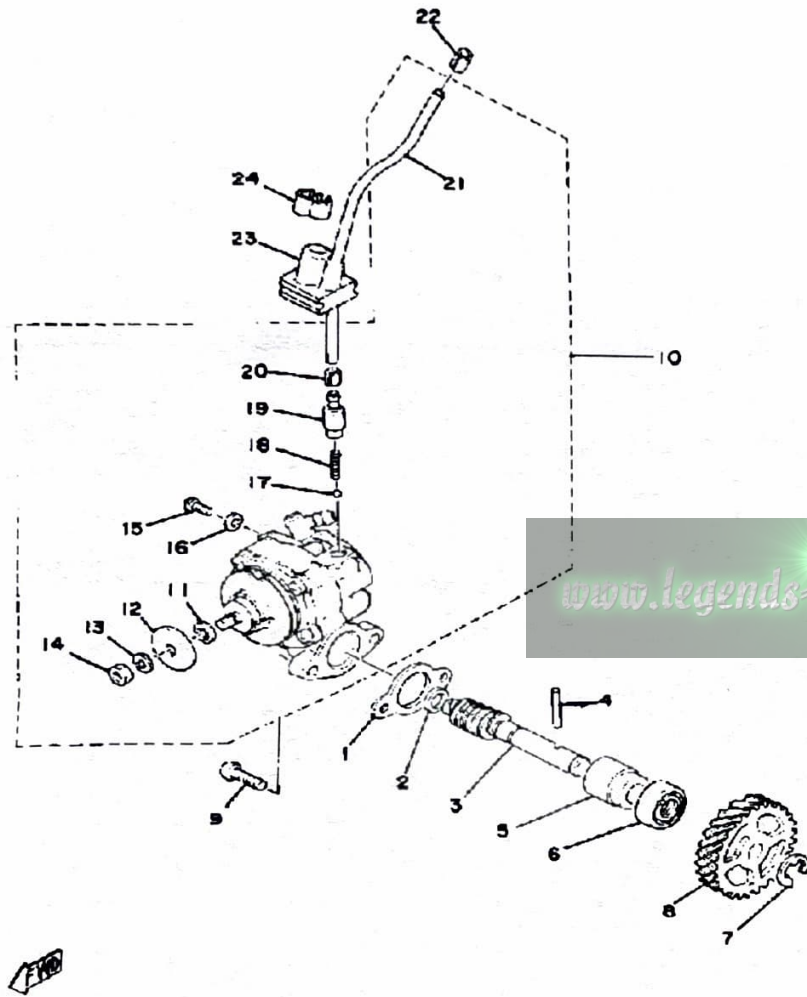
CRANKSHAFT-PISTON



Ref. No.	Part Number	Description	Qty	Remarks
27	558-11610-20-00	PISTON RINGSET 2ND (2ND O.S.)	1	
	558-11610-30-00	PISTON RINGSET 3RD (3RD O.S.)	1	
	558-11610-40-00	PISTON RINGSET 4TH (4TH O.S.)	1	
	558-11630-10-00	PISTON KIT 1ST	1	
	558-11630-20-00	PISTON KIT 2ND	1	
	558-11630-30-00	PISTON KIT 3RD	1	
	558-11630-40-00	PISTON KIT 4TH	1	
	558-11635-01-00	PISTON 1 O/S 0.25 (52.25MM 1ST O.S.)	1	
	558-11636-01-00	PISTON 2 O/S 0.50 (52.50MM 2ND O.S.)	1	
	558-11637-01-00	PISTON 3 O/S 0.75 (52.75MM 3RD O.S.)	1	
	558-11638-01-00	PISTON 4 O/S 1.00 (53.00MM 4TH O.S.)	1	
	90201-12535-00	WASHER, PLATE	1	

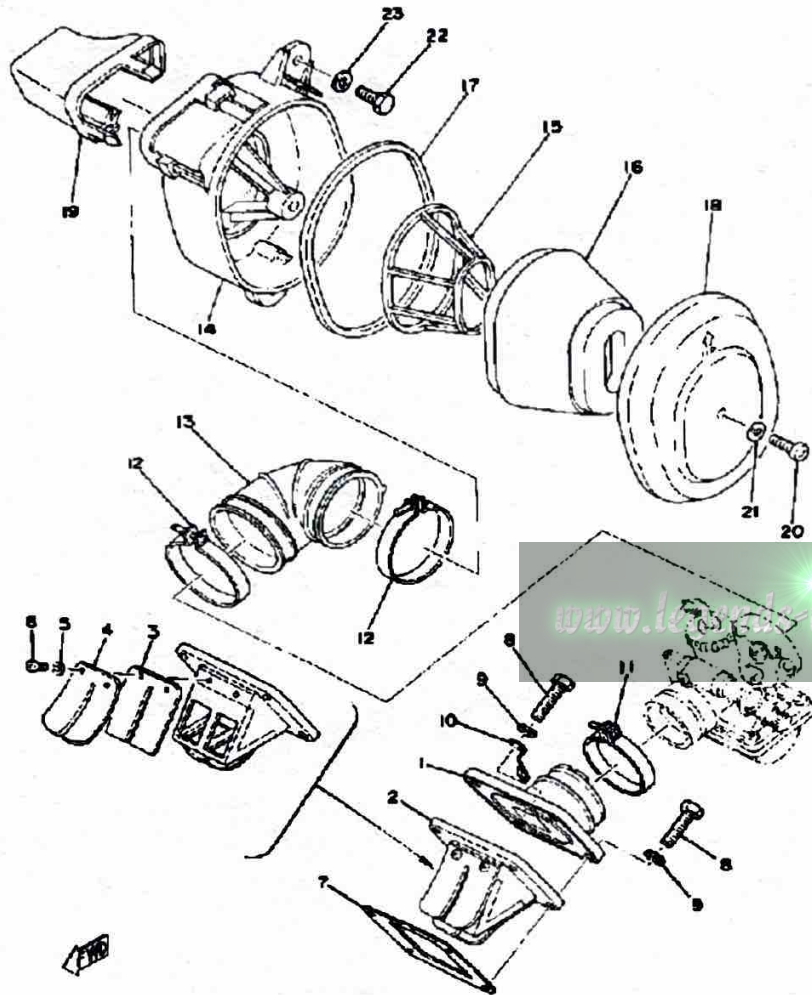
Piston Skirt Clearance new/max.	0.135 ~ 0.160mm / 0.1mm
Ring End Gap Top/2nd/3rd	0.3 ~ 0.5mm / 0.3 ~ 0.5mm / φ

OIL PUMP



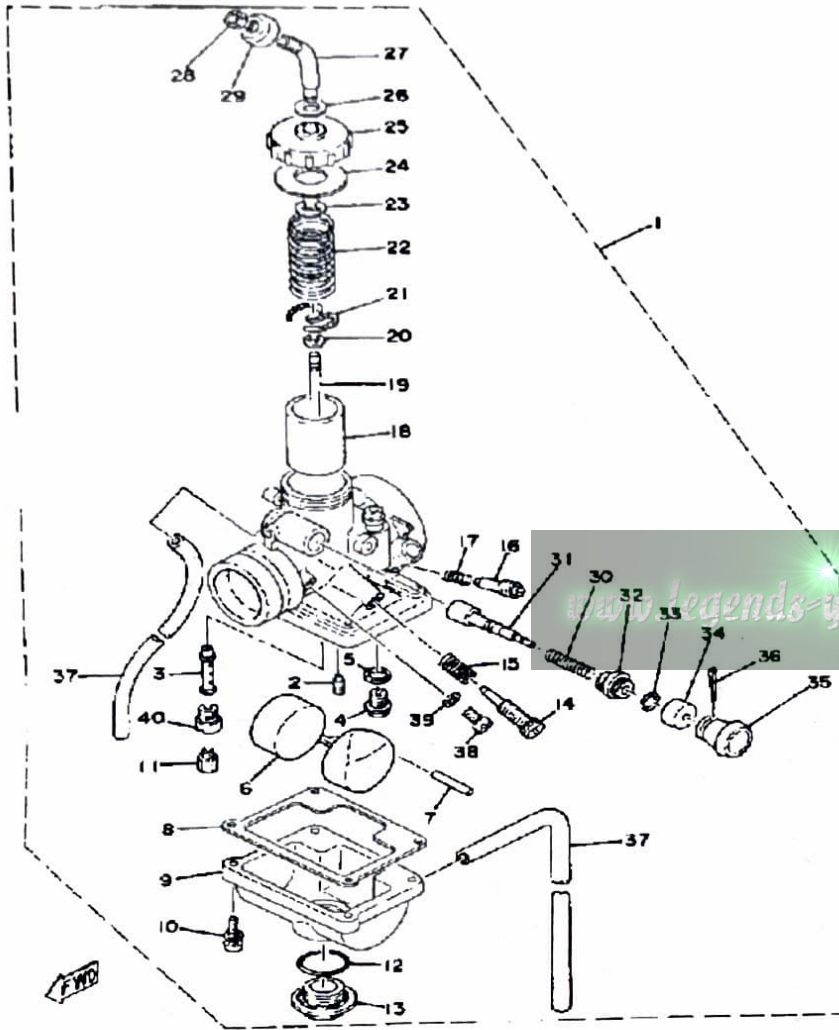
Ref. No.	Part Number	Description	Qty	Remarks
1	3MT-13116-00-00	GASKET, PUMP CASE (8Y0-13116-00)	1	
2	90201-08624-00	WASHER, PLATE	1	
3	275-13175-01-00	SHAFT, WORM	1	
4	93603-22028-00	PIN, DOWEL	1	
5	1E7-13176-00-00	METAL, WRM SHAF OTR	1	
6	93101-10002-00	OIL SEAL	1	
7	99001-08600-00	CIRCLIP	1	
8	248-13178-00-00	GEAR, DRIVE (28T)	1	
9	98580-05016-00	SCREW, PAN HEAD	2	
10	558-13101-01-00	OIL PUMP ASSEMBLY	1	
11	137-13137-00-03	. SHIM (0.3T)	1	
	137-13137-00-05	. SHIM (0.5T)	1	
	137-13137-00-10	. SHIM (1.0T)	1	
12	137-13138-01-00	. PLATE, ADJUSTING	1	
13	92990-05100-00	. WASHER, SPRING	1	
14	95380-05600-00	. NUT	1	
15	98901-04008-00	. SCREW, BIND	1	
16	90430-04004-00	. GASKET	1	
17	93505-32002-00	. BALL	1	
18	90501-02018-00	. SPRING, COMPRESSION	1	
19	402-13552-00-00	. NOZZLE	1	
20	90468-02033-00	. CLIP	1	
21	90445-05278-00	. HOSE	1	
22	90468-02033-00	CLIP	1	
23	525-13174-00-00	HOLDER, OIL PIPE	1	
24	90468-15020-00	CLIP	1	

INTAKE



Ref. No.	Part Number	Description	Qty	Remarks
1	560-13565-00-00	JOINT, CARBURETOR	1	
2	558-13610-00-00	REED VALVE ASSEMBLY	1	
3	345-13613-70-00	. REED, VALVE	2	
4	558-13616-00-00	. STOPPER, REED VALVE	2	
5	92990-03100-00	. WASHER, SPRING (92901-03100)	4	
6	98580-03008-00	. SCREW, PAN HEAD	4	
7	87A-13621-00-00	GASKET, VALVE SEAT	1	
8	97011-06025-00	BOLT (97001-06025)	4	
9	92901-06600-00	WASHER	4	
10	90462-20029-00	CLAMP	1	
11	90460-43053-00	CLAMP, HOSE	1	
12	90460-51059-00	CLAMP, HOSE	2	
13	1T9-14453-00-00	JOINT, AIR CLNR 1	1	
14	1T9-14411-00-00	CASE, AIR CLEANER 1	1	
15	1T9-14458-00-00	GUIDE	1	
16	1T9-14450-00-00	ELEMENT ASSEMBLY, AIR CLEANER	1	
17	3V6-14416-00-00	GASKET, AIR CLEANER	1	
18	1T9-14412-00-00	CAP, CLEANER CASE 1	1	
19	1T9-14437-00-00	DUCT	1	
20	98580-06018-00	SCREW, PAN HEAD	1	
21	92901-06600-00	WASHER	1	
22	97313-06016-00	BOLT, HEXAGON	1	
23	90201-06067-00	WASHER, PLATE	1	

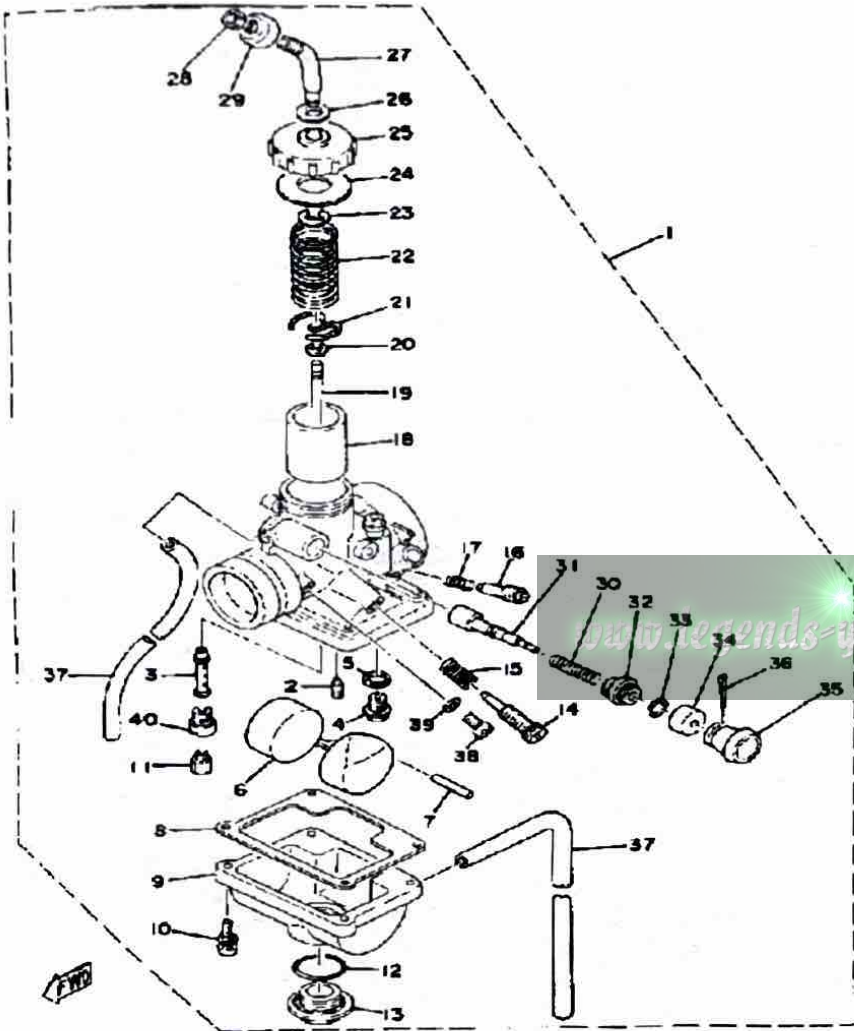
CARBURETOR



Ref. No.	Part Number	Description	Qty	Remarks
1	3M1-14101-00-00	CARBURETOR ASSEMBLY 1	1	
2	260-14142-17-00	. JET, PILOT (#17.5)	1	
3	2F5-14141-36-00	. NOZZLE, MAIN	1	
4	353-14190-15-00	. NEEDLE VALVE ASSEMBLY	1	
5	127-14195-00-00	. WASHER, NEEDLE VALVE	1	
6	304-14185-00-00	. FLOAT	1	
7	127-14186-00-00	. PIN, FLOAT	1	
8	304-14184-00-00	. GASKET, FLOAT CHAMBER	1	
9	539-14181-06-00	. BODY, FLOAT CHMBR 1	1	
10	(97602-04116-00)	SCREW, PN/HD.W/WSHR	4	
11	137-14143-25-A0	. JET, MAIN #1 5	1	
	137-14143-26-A0	JET, MAIN (#130)	1	STD
	137-14143-27-00	. JET, MAIN (#135)	1	
12	558-14147-00-00	. O-RING	1	
13	500-14115-00-00	. PLUG, SCREW	1	
14	493-14122-00-00	. SCREW, THROTTLE (443-14122-00)	1	
15	493-14133-00-00	. SPRING, THRTL STOP	1	
16	22K-14104-00-00	. AIR SCREW SET	1	
17	174-14134-00-00	. SPRING, AIR ADJUSTING	1	
18	304-14112-20-00	. VALVE, THROTTLE 1	1	
19	18L-1490J-00-00	. . NEEDLE	1	
20	164-14137-00-00	. CLIP	1	
21	137-14136-00-00	. SEAT, SPRING	1	
22	3X3-14131-00-00	. SPRING, THRTL VALVE	1	
23	363-14137-00-00	. CLIP	1	
24	193-14126-00-00	. GASKET	1	
25	1T9-14158-00-00	. TOP, MIXING CHAMBER	1	
26	509-14198-00-00	. GASKET	1	

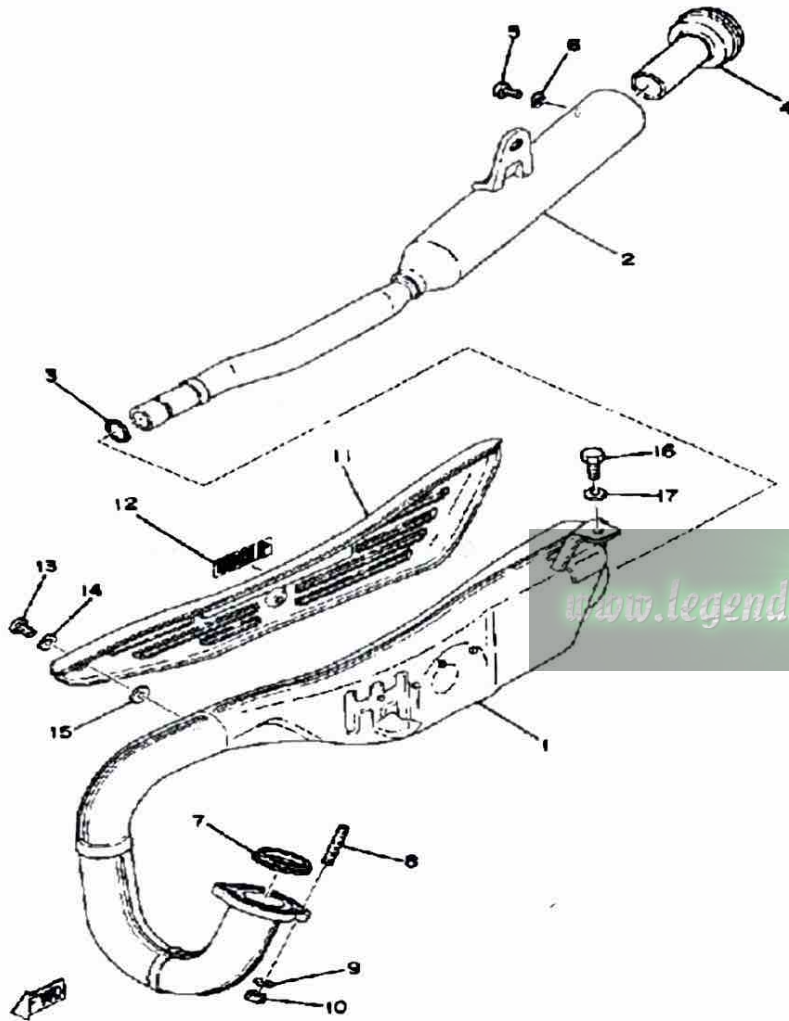
CONTINUED ON NEXT FRAME ►

CARBURETOR



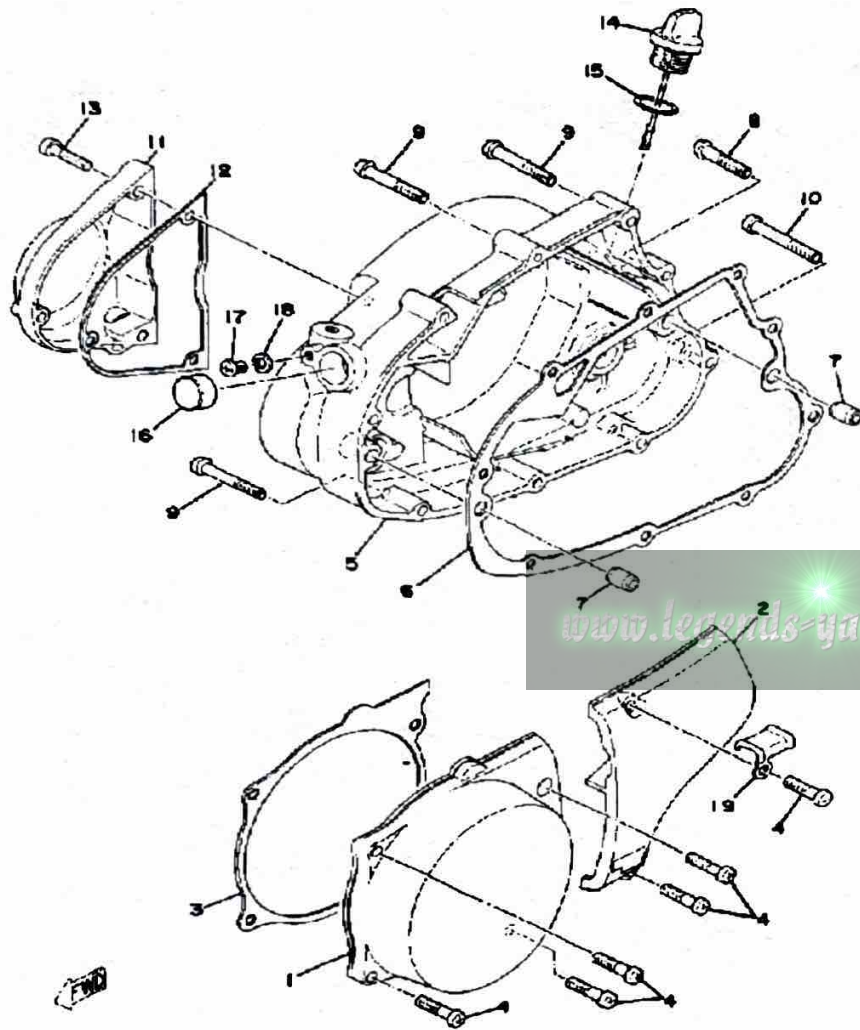
Ref. No.	Part Number	Description	Qty	Remarks
27	10X-14106-00-00	. CABLE ADJUST SCREW SET	1	
28	127-14161-00-00	. NUT, CABLE ADJUSTING ...	1	
29	1M1-14169-00-00	. CAP	1	
30	156-14135-00-00	. SPRING, PLUNGER	1	
31	304-14171-00-00	. PLUNGER, STARTER	1	
32	152-14174-00-00	. CAP, PLUNGER	1	
33	152-14138-00-00	. CLIP, PLUNGER	1	
34	132-14173-00-00	. COVER, PLUNGER CAP	1	
35	304-14261-00-00	. HOLDER	1	
36	91490-16020-00	. PIN, COTTER	1	
37	23F-14197-00-00	. PIPE, AIRVENT	2	
38	2F5-14115-00-00	. PLUG, SCREW	1	
39	584-14956-00-00	. WASHER	1	
40	2F5-14145-00-00	. SETTER, NEEDLE JET	1	

EXHAUST



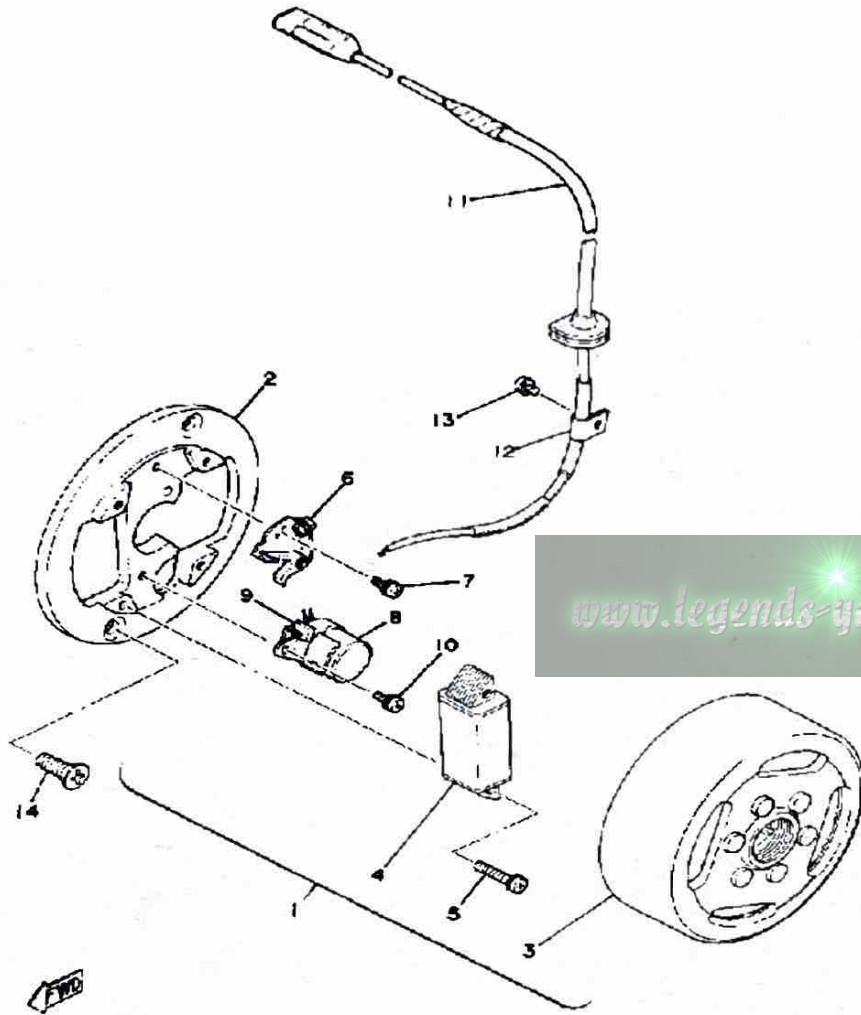
Ref. No.	Part Number	Description	Qty	Remarks
1	3UL-14610-00-00	EXHAUST PIPE ASSEMBLY ..	1	
2	1T9-14753-00-00	SILENCER, EXHAUST	1	
3	93210-16290-00	O-RING	1	
4	438-14752-00-00	PIPE, OUTLET	1	
5	98580-06010-00	SCREW, PAN HEAD (92503-06010)	1	
6	92995-06100-00	WASHER, SPRING	1	
7	152-14613-00-00	GASKET, EXST PIPE	1	
8	90116-06016-00	BOLT, STUD	2	
9	92995-06100-00	WASHER, SPRING	2	
10	95380-06600-00	NUT	2	
11	(1T9-14718-00-2H)	PROTECTOR, MUFF 1	1	NEW WHITE
12	(3M1-14729-00-00)	EMBLEM, PROTECTOR	1	
13	98903-06010-00	SCREW, BIND	3	
14	90202-05005-00	WASHER, PLATE (218-14766-10)	3	
15	90202-05187-00	WASHER, PLATE	3	
16	97313-08018-00	BOLT, HEXAGON (97301-08016)	1	
17	92990-08200-00	WASHER, PLAIN	1	

CRANKCASE COVER



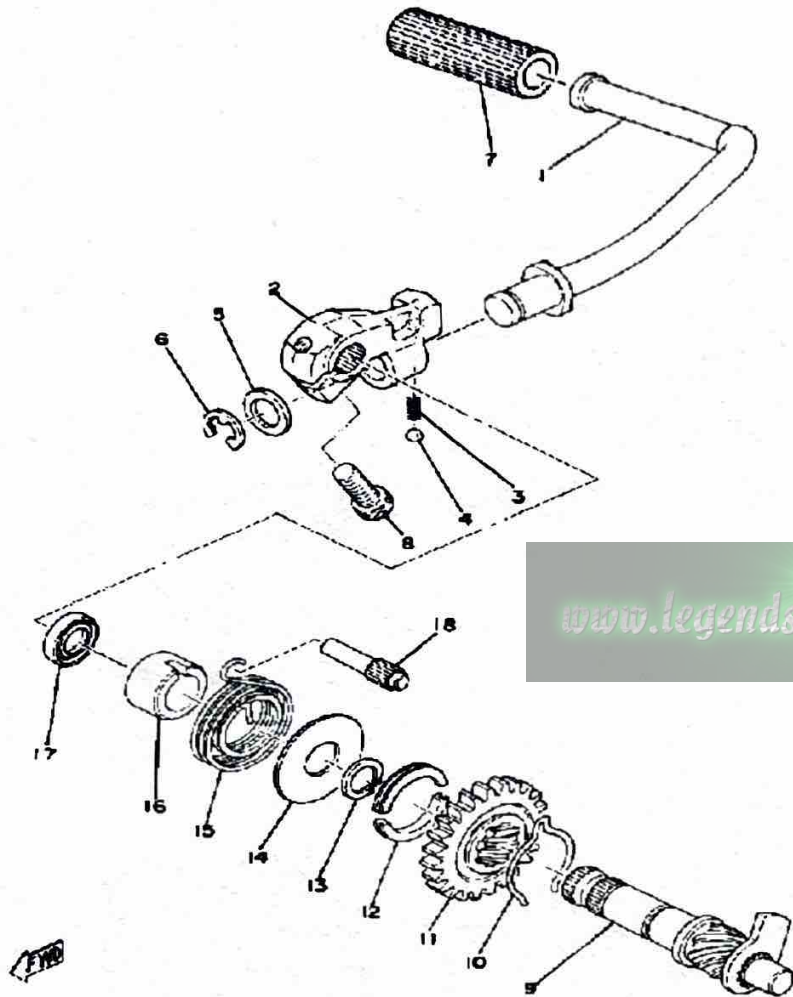
Ref. No.	Part Number	Description	Qty	Remarks
1	1X0-15411-00-00	COVER, CRANKCASE L	1	
2	401-15421-00-00	COVER, CRANKCASE R	1	
3	1X0-15455-00-00	GASKET 1	1	
4	98580-06020-00	SCREW	6	
5	401-15431-00-00	COVER, CRANKCASE 3	1	
6	401-15451-00-00	GASKET, CRCS COVER/CRANKCASE COVER 1	1	
7	99530-10014-00	PIN, DOWEL	2	
8	98580-06030-00	SCREW PAN HEAD	3	
9	98580-06040-00	SCREW, pan head (92501-06040-00)	5	
10	98580-06545-00	SCREW PAN HEAD (92503-06045)	1	
11	1X0-15416-00-00	COVER, OIL PUMP	1	
12	3UL-15456-00-00	GASKET, OIL PUMP COVER 1	1	
13	98511-06025-00	SCREW PAN HEAD (92501-06025)	3	
14	401-15362-00-00	PLUG, OIL LEVEL	1	
15	93210-19123-00	O-RING	1	
16	90338-20023-00	PLUG	1	
17	98580-06010-00	SCREW, PAN HEAD (92503-06010)	1	
18	92995-06100-00	WASHER, SPRING	1	
19	90461-10016-00	CLAMP	1	

FLYWHEEL MAGNETO



Ref. No.	Part Number	Description	Qty	Remarks
1	(3M1-81300-20-00)	FLYWHL MAGNETO ASSEMBLY	1	
2	437-81309-20-00	. BASE, MAGNETO	1	
3	(3M1-81350-20-00)	ROTOR ASSEMBLY	1	
4	511-81312-20-00	. COIL, SOURCE	1	
5	97602-04125-00	. SCREW, PN/HD.W/WSHR (4-25)	2	
6	2A6-81321-20-00	. CONTACT BRKR ASSEMBLYASSY	1	
7	110-81346-21-00	. SCREW, PAN HEAD	1	
8	1K8-81325-20-00	. CONDENSER 1	1	
9	116-81331-20-00	. LUBRICATOR	1	
10	110-81346-21-00	. SCREW, PAN HEAD	1	
11	(3M1-81315-20-00)	LEAD WIRE ASSEMBLY	1	
12	104-81328-20-00	. CLAMP	1	
13	97601-04106-00	. SCREW, PN/HD.W/WSHR	1	
14	98603-06012-00	SCREW, OVAL HEAD (92701-06012)	2	

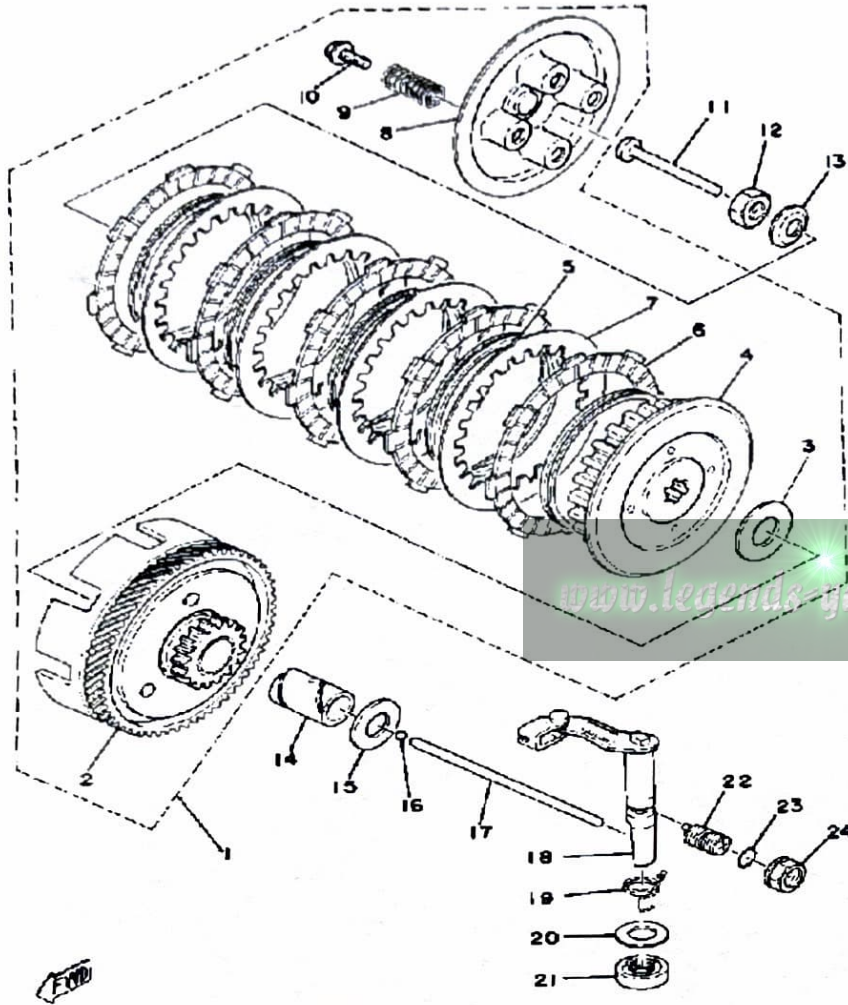
KICK-STARTER



Ref. No.	Part Number	Description	Qty	Remarks
1	3UL-15620-00-00	KICK CRANK ASSEMBLY	1	YAMAHA BLACK
2	1T9-15621-00-00	BOSS, KICK CRANK	1	YAMAHA BLACK
3	90501-12081-00	SPRING, COMPRESSION	1	
4	93507-32031-00	BALL	1	
5	90201-15234-00	WASHER, PLATE	1	
6	99006-10600-00	CIRCLIP	1	
7	156-15618-01-00	COVER, KICK LEVER	1	
8	91316-08025-00	BOLT, SOCKET HEAD	1	
9	403-15660-01-00	KICK AXLE ASSEMBLY (403-15660-02-00)	1	
10	90468-26048-00	CLIP	1	
11	315-15641-00-00	GEAR, KICK (27T)	1	
12	248-15654-00-00	HOLDER, KICK GEAR	2	
13	99009-30400-00	CIRCLIP	1	
14	401-15676-00-00	COVER, SPRING	1	
15	90508-26041-00	SPRING, TORSION	1	
16	1W1-15666-00-00	SPACER	1	
17	93101-17062-00	OIL SEAL	1	
18	257-15668-00-00	STOPPER	1	

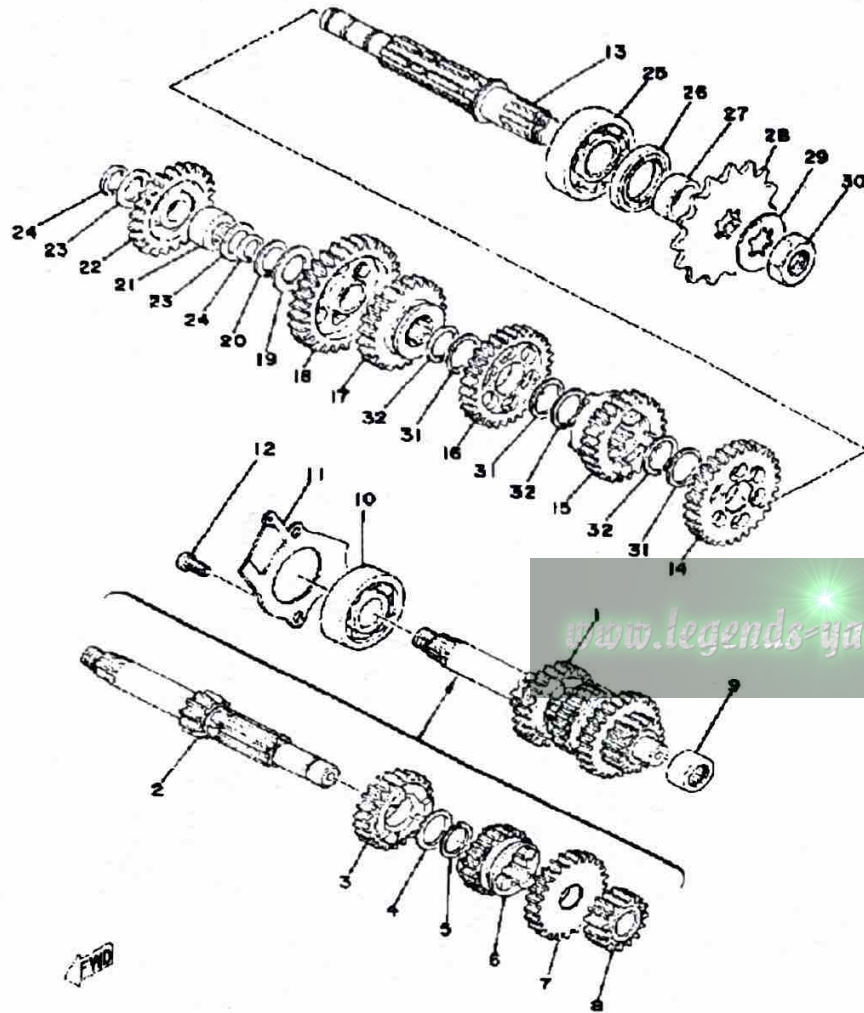
www.legends-yamaha.com

CLUTCH



Ref. No.	Part Number	Description	Qty	Remarks
1	(1V1-16301-10-00)	CLUTCH ASSEMBLY	1	
2	1V1-16150-10-00	. PRIMARY DRIVEN GEAR COMP. (74T)	1	
3	131-16154-00-00	. PLATE, THRUST 1	1	
4	1V1-16371-02-00	. BOSS, CLUTCH	1	
5	1V1-16367-00-00	. RING, CUSHION	5	
6	598-16321-01-00	. PLATE, FRICTION	5	
7	1V1-16324-00-00	. PLATE, CLUTCH 1	4	
8	598-16351-00-00	. PLATE, PRESSURE 1	1	
9	90501-20125-00	. SPRING, COMPRESSION	4	
10	90119-05001-00	. BOLT, WITH WASHER	4	
11	137-16356-00-00	ROD, PUSH 1	1	
12	90170-12060-00	NUT	1	
13	90208-12015-00	WASHER, CONICAL SPRING ..	1	
14	90560-17147-00	SPACER	1	
15	90201-17558-00	WASHER, PLATE	1	
16	93503-16010-00	BALL	1	
17	1X0-16357-00-00	ROD, PUSH 2	1	
18	525-16380-00-00	PUSH LEVER ASSEMBLY	1	
19	90508-14132-00	SPRING, TORSION	1	
20	90201-14217-00	WASHER, PLATE	1	
21	93104-14059-00	OIL SEAL, SO-TYPE	1	
22	90149-12097-00	SCREW	1	
23	93210-10096-00	O-RING	1	
24	90179-12197-00	NUT	1	

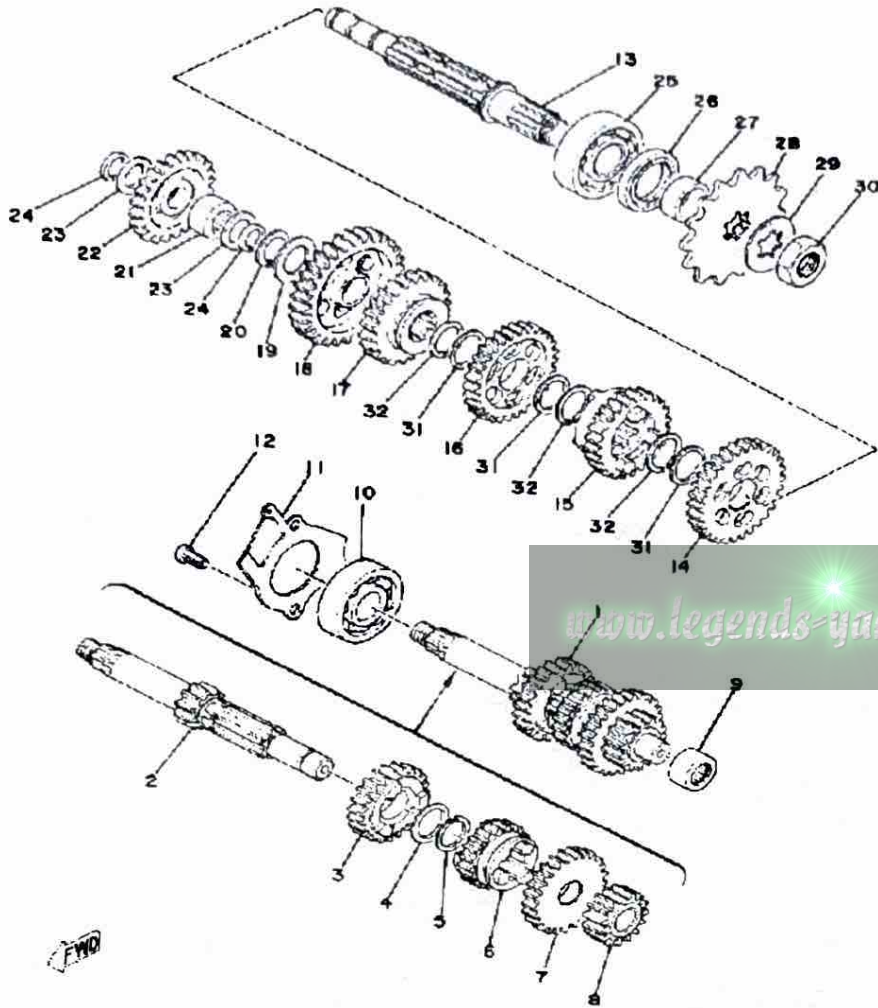
TRANSMISSION



Ref. No.	Part Number	Description	Qty	Remarks
1	(558-17410-00-00)	MAIN AXLE	1	
2	558-17411-00-00	. AXLE, MAIN (11T)	1	
3	(437-17141-00-00)	GEAR, 4TH PINION	1	
4	90201-20266-00	. WASHER, PLATE (1.0T)	1	
5	93410-20038-00	. CIRCLIP	1	
6	427-17131-00-00	. GEAR, 3RD PINION (19T)	1	
7	437-17151-00-00	. GEAR, 5TH PINION (25T)	1	
8	437-17121-02-00	. GEAR, 2ND PINION	1	
9	93315-31502-00	BEARING	1	
10	93306-30309-00	BEARING	1	
11	1G8-17471-00-00	PLATE, COVER	1	
12	98580-06012-00	SCREW, PAN HEAD	2	
13	558-17421-00-00	AXLE, DRIVE	1	
14	427-17221-00-00	GEAR, 2ND WHEEL (30T)	1	
15	437-17251-00-00	GEAR, 5TH WHEEL (20T)	1	
16	427-17231-00-00	GEAR, 3RD WHEEL (26T)	1	
17	248-17241-00-00	GEAR, 4TH WHEEL (23T)	1	
18	248-17211-00-00	GEAR, 1ST WHEEL (35T)	1	
19	164-17427-00-06	SHIM 1 (0.6T)	1	
20	93440-15012-00	CIRCLIP	1	
21	93311-31567-00	BEARING, CYLINDRICAL	1	
22	525-15651-00-00	GEAR, KICK IDLE (25T)	1	
23	137-17417-00-05	SHIM 1 (0.5T)	2	
24	93440-15012-00	CIRCLIP	2	
25	93306-30421-00	BEARING (B6304C3)	1	
26	93102-26042-00	OIL SEAL	1	
27	90387-20491-00	COLLAR	1	
28	93812-13022-00	SPROCKET, DRIVE 13T	1	U.R.
	93812-14035-00	SPROCKET, DRIVE 14T (5171746142)	1	U.R.ãSTD

CONTINUED ON NEXT FRAME ►

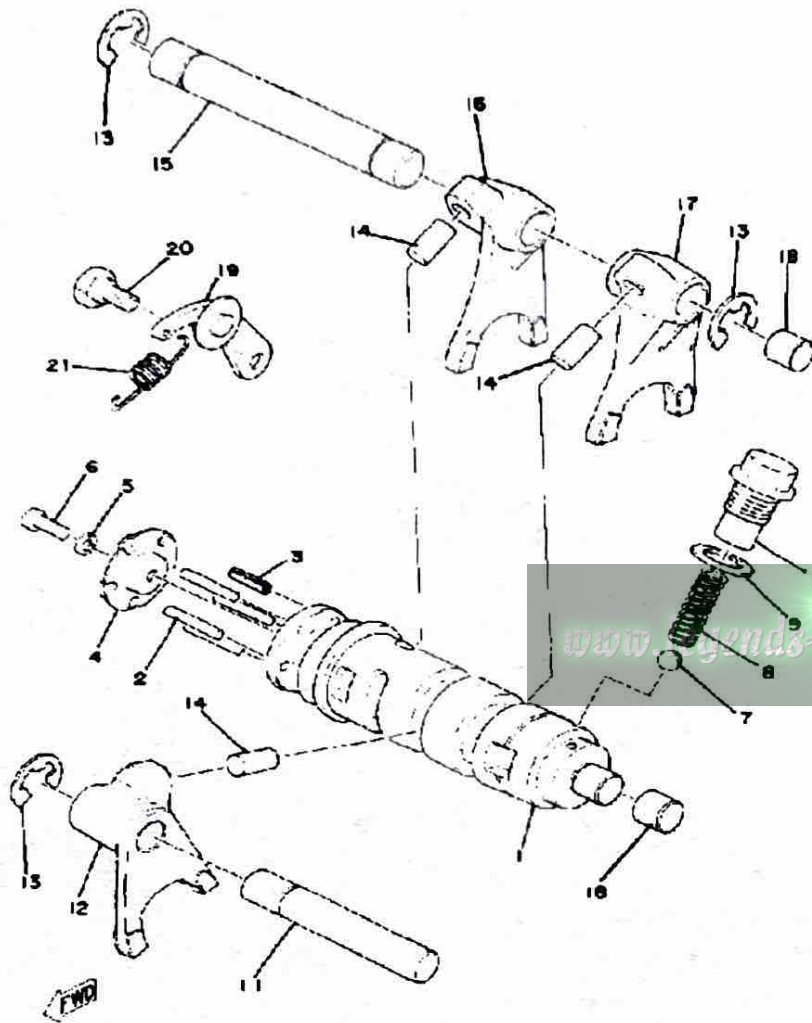
TRANSMISSION



Ref. No.	Part Number	Description	Qty	Remarks
28	93812-15063-00	SPROCKET, DRIVE 15T (5171746152)	1	U.R.
29	90215-16020-00	WASHER, LOCK	1	
30	90179-16018-00	NUT	1	
31	90201-20266-00	WASHER, PLATE (1.0T)	3	
32	93410-20038-00	CIRCLIP	3	

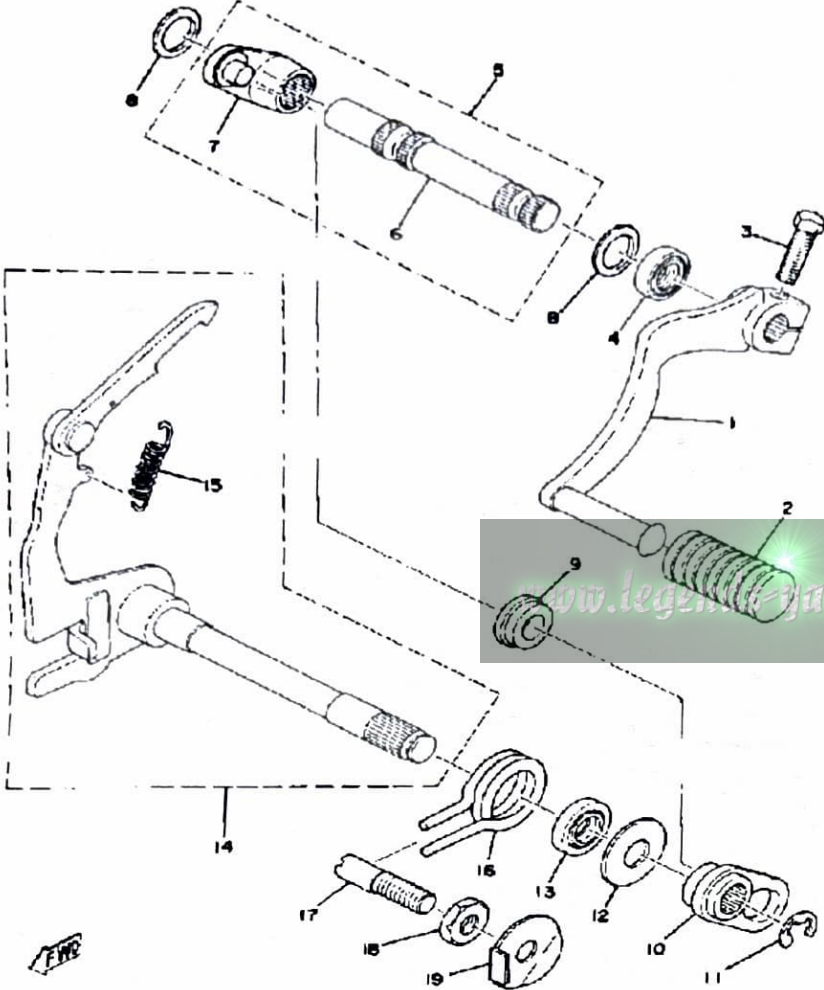
FWD

SHIFTER 1



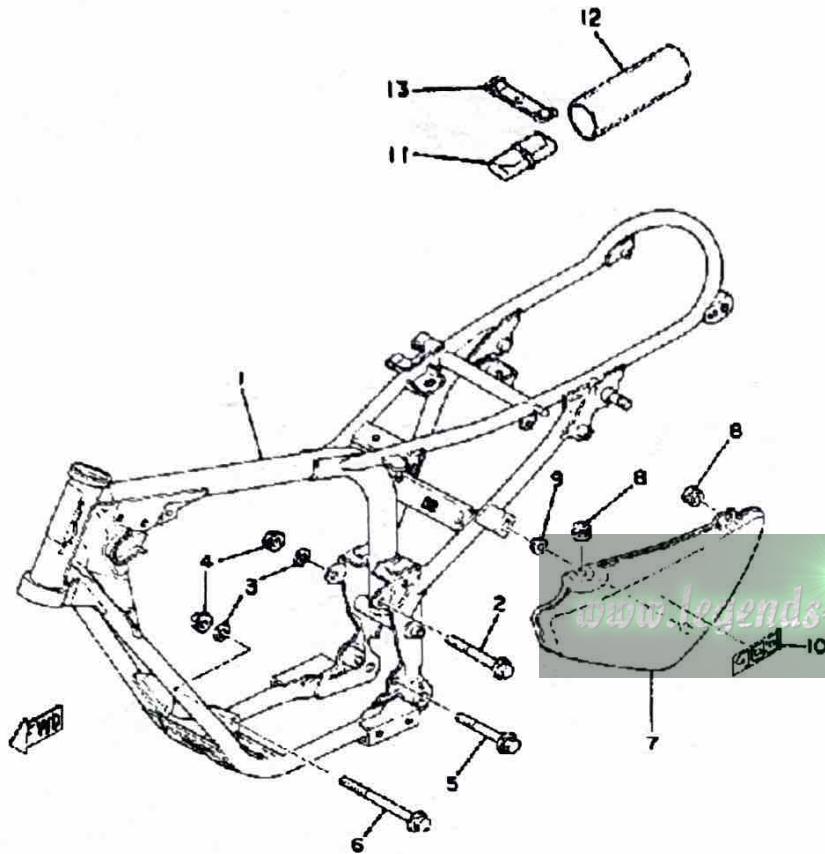
Ref. No.	Part Number	Description	Qty	Remarks
1	401-18540-00-00	SHIFT CAM ASSEMBLY	1	
2	93604-22050-00	PIN, DOWEL	4	
3	91609-40016-00	PIN, SPRING	1	
4	164-18561-00-00	PLATE, SIDE 1	1	
5	92990-05100-00	WASHER, SPRING	1	
6	98580-05012-00	SCREW, PAN HEAD	1	
7	93505-16006-00	BALL	1	
8	90501-12083-00	SPRING, COMPRESSION (174-18558-00)	1	
9	137-15353-00-00	GASKET, DRAIN	1	
10	90109-14385-00	BOLT	1	
11	(248-18531-00-00)	BAR, SHIF FRK GDE 1	1	
12	463-18512-00-00	FORK, SHIFT 2	1	
13	93430-10017-00	CIRCLIP	3	
14	90250-08017-00	PIN, STRAIGHT	3	
15	214-18531-00-00	BAR, SHIFT FORK GUIDE 1 ...	1	
16	463-18513-00-00	FORK, SHIFT 3	1	
17	463-18511-00-00	FORK, SHIFT 1	1	
18	214-15385-00-00	PLUG, BLIND	2	
19	132-18140-01-00	STOPPER LEVER ASSEMBLY .	1	
20	90109-06001-00	BOLT	1	
21	90506-09112-00	SPRING, TENSION	1	

SHIFTER 2



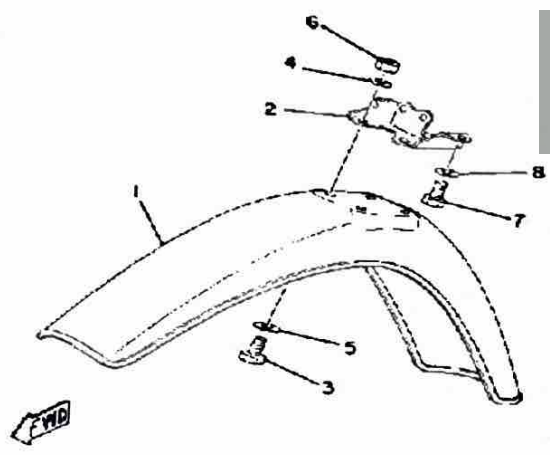
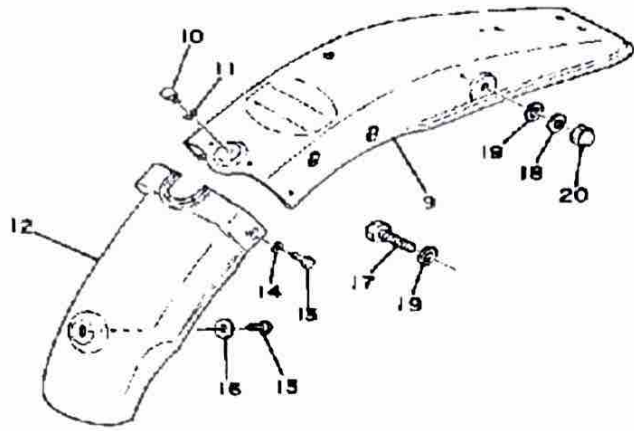
Ref. No.	Part Number	Description	Qty	Remarks
1	1T9-18111-00-00	PEDAL, SHIFT	1	
2	132-18113-01-00	COVER, SHIFT PEDAL	1	
3	97011-06020-00	BOLT	1	
4	93109-12012-00	OIL SEAL	1	
5	401-18102-01-00	SHIFT SHAFT ASSEMBLY 2 ..	1	
6	401-18155-02-00	. SHAFT, SHIFT 2	1	
7	401-18151-00-00	. LEVER, SHIFT 3	1	
8	401-18334-00-00	SHIM	2	
9	401-18178-00-00	ROLLER, SHIFT LEVER	1	
10	401-18152-01-00	LEVER, SHIFT 4	1	
11	99001-08600-00	CIRCLIP	1	
12	90201-12575-00	WASHER, PLATE	1	
13	93101-12060-00	OIL SEAL	1	
14	558-18101-00-00	SHIFT SHAFT ASSEMBLY	1	
15	90506-09009-00	. SPRING, TENSION	1	
16	90508-32207-00	SPRING, TORSION (132-18124-00)	1	
17	90149-08094-00	SCREW	1	
18	90170-08029-00	NUT	1	
19	90215-08014-00	WASHER, LOCK	1	

FRAME-SIDE COVER



Ref. No.	Part Number	Description	Qty	Remarks
1	(3M1-21110-00-33)	FRAME	1	YAMAHA BLACK
2	90105-08095-00	BOLT, WASHER BASED	1	
3	92990-08100-00	WASHER	2	
4	95701-08500-00	NUT, FLANGE	2	
5	95811-10075-00	BOLT, FLANGE	1	
6	90105-08094-00	BOLT, WASHER BASED	1	
7	(3M1-21711-00-00)	COVER, SIDE 1	1	NEW WHITE
8	90480-12053-00	GROMMET	2	
9	90480-01401-00	GROMMET	1	
10	(3M1-21737-00-00)	EMBLEM	1	
11	353-W2810-00-00	TOOL KIT	1	
12	(1T9-28171-00-00)	COVER, TOOL BOX	1	
13	21V-21376-00-00	BAND, TOOL	1	

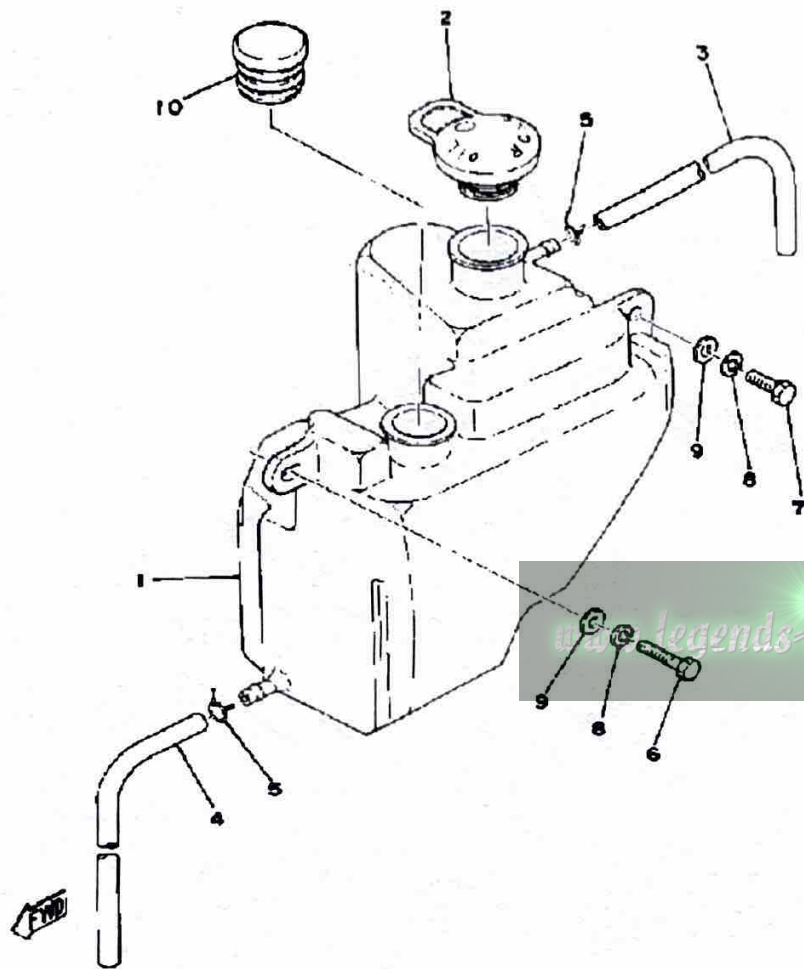
FRONT FENDER-REAR FENDER



Ref. No.	Part Number	Description	Qty	Remarks
1	2E7-21511-00-00	FENDER, FRONT	1	NEW WHITE
2	1T9-21513-00-00	STAY, FENDER 1	1	
3	97301-08014-00	BOLT, HEXAGON	4	
4	92995-06100-00	WASHER, SPRING	4	
5	90201-06067-00	WASHER, PLATE	4	
6	95380-06600-00	NUT	4	
7	97011-06010-00	BOLT	2	
8	92995-06100-00	WASHER, SPRING	2	
9	3M1-21611-00-2H	FENDER, REAR	1	
10	97301-06014-00	BOLT, HEXAGON	1	
11	90201-06067-00	WASHER, PLATE	1	
12	1T9-21621-00-00	FLAP	1	
13	97013-06012-00	BOLT	1	
14	92901-06600-00	WASHER	1	
15	97013-06012-00	BOLT	1	
16	90201-06067-00	WASHER, PLATE	1	
17	97313-08040-00	BOLT, HEXAGON (97322-08040)	2	
18	92990-08100-00	WASHER	2	
19	92901-08600-00	WASHER	4	
20	95303-08800-00	NUT (CROWN) (95301-08800)	2	

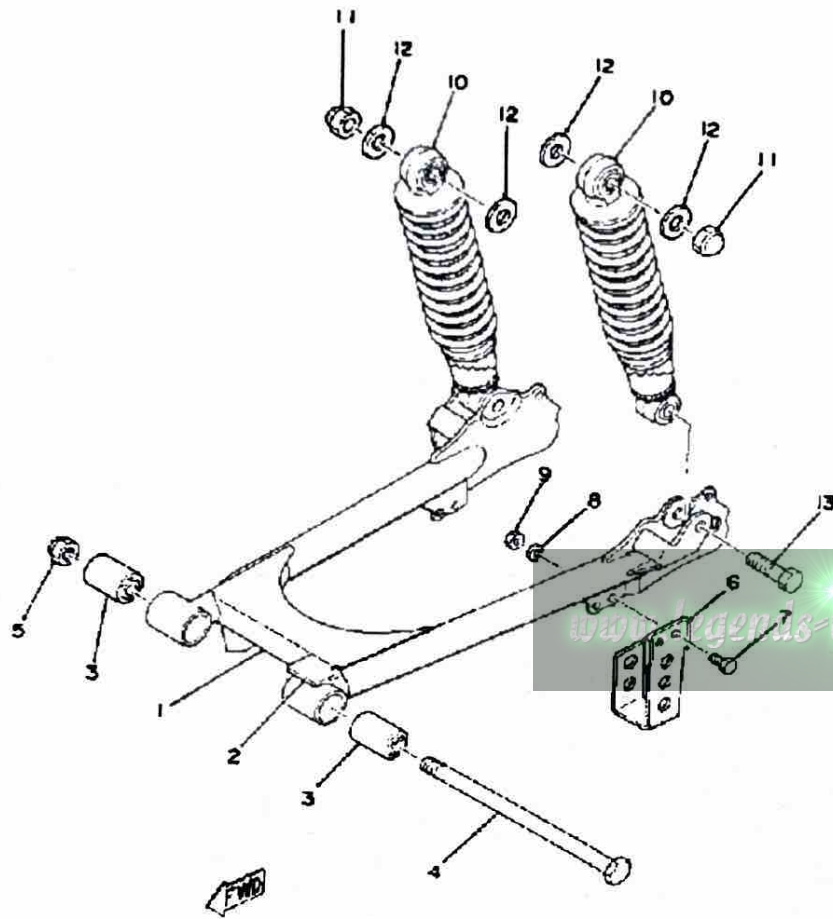
www.legends-yamaha.com

OIL TANK



Ref. No.	Part Number	Description	Qty	Remarks
1	1T9-21751-00-00	TANK, OIL	1	
2	1T9-21771-00-00	BODY, CAP	1	
3	90445-09111-00	HOSE	1	
4	90445-09252-00	HOSE	1	
5	90467-08003-00	CLIP	2	
6	97011-06025-00	BOLT (97001-06025)	1	
7	97313-06016-00	BOLT, HEXAGON	1	
8	92995-06100-00	WASHER, SPRING	2	
9	90201-06067-00	WASHER, PLATE	2	
10	3M2-21771-00-00	BODY, CAP	1	

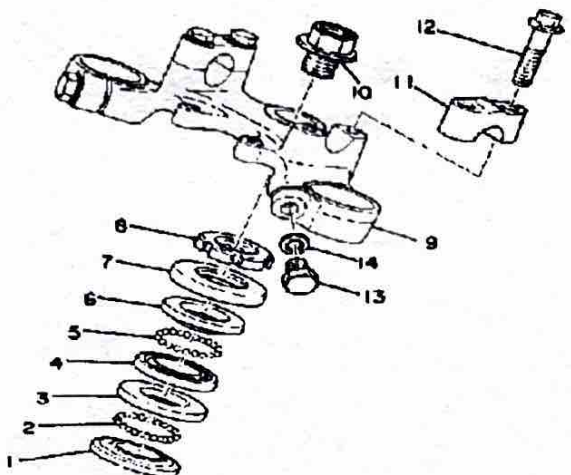
REAR ARM-REAR CUSHION



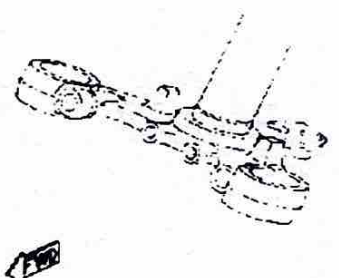
Ref. No.	Part Number	Description	Qty	Remarks
1	1T9-22110-01-33	REAR ARM	1	YAMAHA BLACK
2	183-22151-00-00	SEAL, GUARD	1	
3	276-22123-00-00	BUSH 1	2	
4	401-22141-00-00	SHAFT, PIVOT	1	
5	90185-12067-00	NUT, SELF-LOCKING	1	
6	492-22153-00-33	GUARD, CHAIN	1	YAMAHA BLACK
7	97301-06014-00	BOLT, HEXAGON	2	
8	92995-06100-00	WASHER, SPRING	2	
9	95380-06600-00	NUT	2	
10	1T9-22210-00-33	SHK/ABS ASSEMBLY, REAR .	2	YAMAHA BLACK
11	95303-12800-00	NUT (CROWN)	2	
12	90201-12190-00	WASHER, PLATE	4	
13	90101-10633-00	BOLT, HEXAGON	2	

STEERING

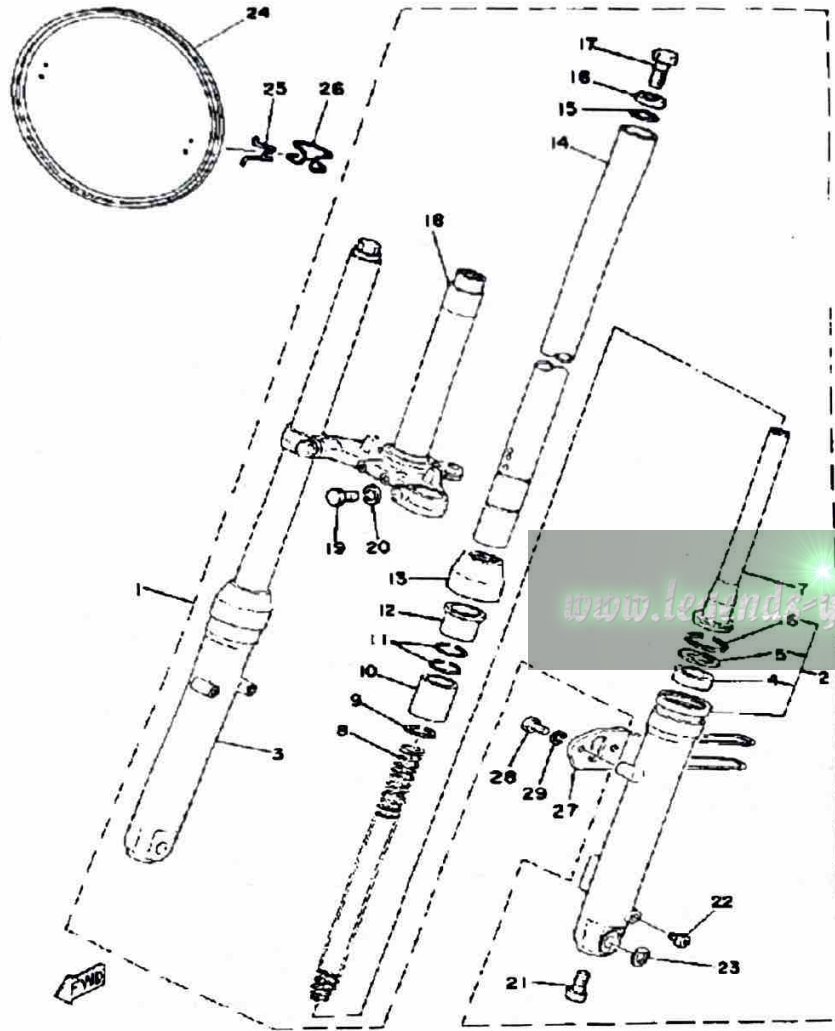
Ref. No.	Part Number	Description	Qty	Remarks
1	156-23411-00-00	RACE, BALL 1	1	
2	93501-04011-00	BALL	19	
3	156-23412-00-00	RACE, BALL 2	1	
4	22F-23412-01-00	RACE, BALL 2	1	
5	93503-16010-00	BALL	22	
6	22F-23411-01-00	RACE, BALL 1	1	
7	122-23416-00-00	COVER, BALL RACE 2	1	
8	90179-25033-00	NUT	1	
9	354-23435-00-33	CROWN, HANDLE	1	YAMAHA BLACK
10	90105-14136-00	BOLT, WASHER BASED	1	
11	1E6-23441-00-00	HOLDER, HANDLE UPR	2	LOW GLOSS BLK
12	95811-08035-00	BOLT, FLANGE (95821-08035) .	4	
13	97313-08030-00	BOLT, HEXAGON	2	
14	92990-08100-00	WASHER	2	



www.legends-yamaha-enduros.com



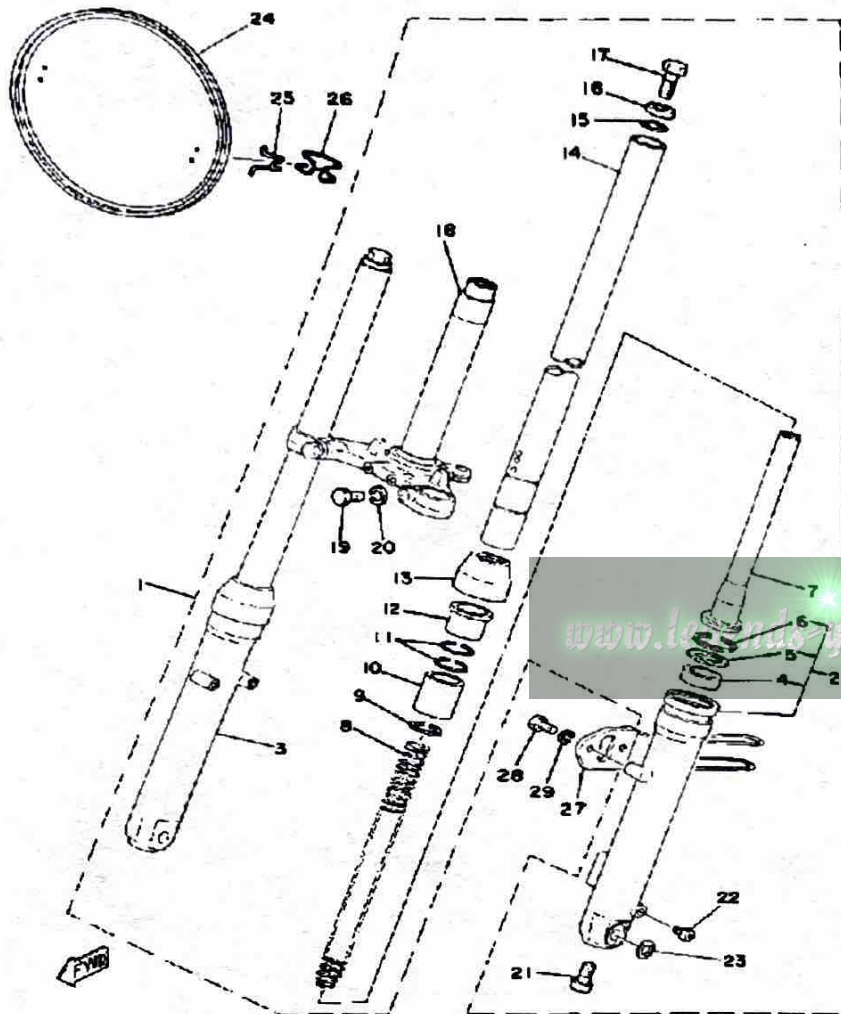
FRONT FORK



Ref. No.	Part Number	Description	Qty	Remarks
1	(1T9-23101-00-00)	FRONT FORK ASSEMBLY	1	
2	1T9-23126-00-35	TUBE, OUTER (LEFT)	1	
3	462-23136-02-38	TUBE, OUTER 2 (462-23136-02)	1	
4	462-23145-02-00	OIL SEAL	2	
5	462-23146-02-00	WASHER, OIL SEAL	2	
6	462-23156-02-00	CLIP, OIL SEAL	2	
7	462-23170-02-00	CYLINDER COMP., FRONT FORK	2	
8	1T9-23141-00-00	SPRING, FRONT FORK	2	
9	462-23183-02-00	CIRCLIP	2	
10	462-23171-02-00	PISTON, FRONT FORK	2	
11	462-23157-02-00	RING, PISTON	4	
12	462-23125-02-00	METAL, SLIDE 1	2	
13	462-23144-02-00	SEAL, DUST	2	
14	1T9-23124-00-00	TUBE, INNER 1	2	
15	462-23114-02-00	GASKET	2	
	92990-10100-00	WASHER, SPRING	2	
16	276-23112-50-00	WASHER, CAP	2	
17	205-23111-40-00	BOLT, CAP	2	
18	1T9-23340-00-90	UNDER BRACKET COMP.	1	YAMAHA BLACK
19	97013-10030-00	BOLT (8J7) (97303-10030)	2	
20	92990-10100-00	WASHER, SPRING	2	
21	98580-06025-00	SCREW, PAN HEAD	2	
22	451-23119-01-00	PLUG, DRAIN	2	
23	462-23392-02-00	WASHER, SPECIAL	2	
24	(2X6-23485-00-00)	PLATE, NUMBER	1	
25	431-23486-02-00	STAY, PLATE	2	
26	2J5-23489-00-00	BAND	2	

CONTINUED ON NEXT FRAME ►

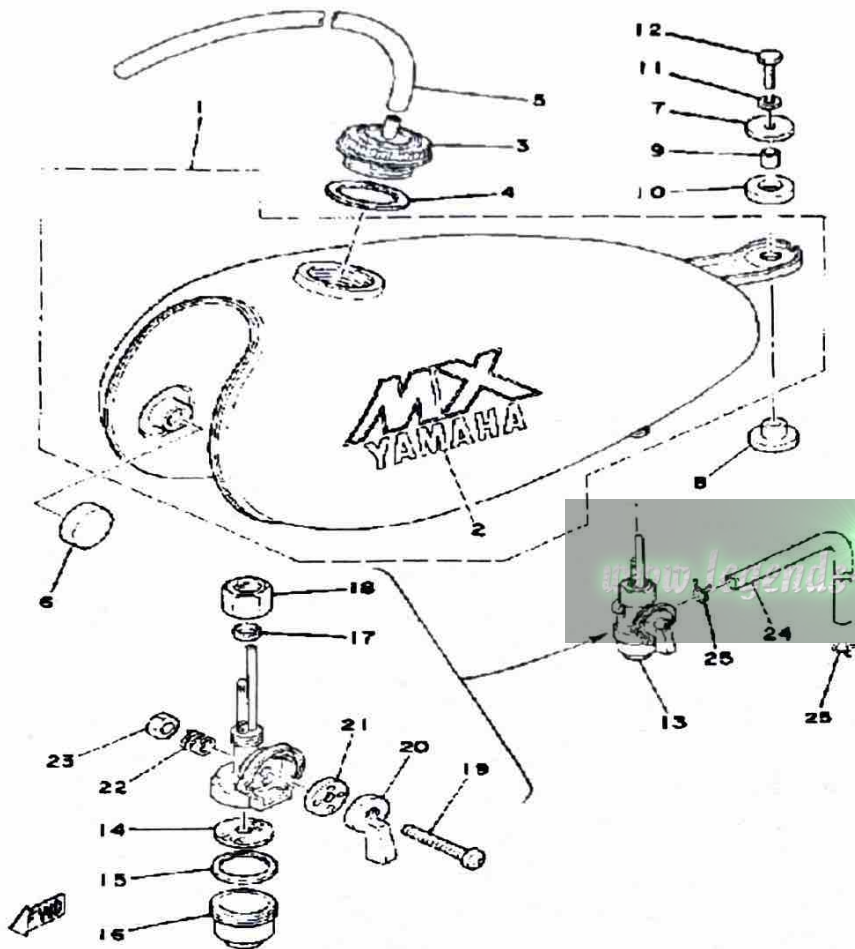
FRONT FORK



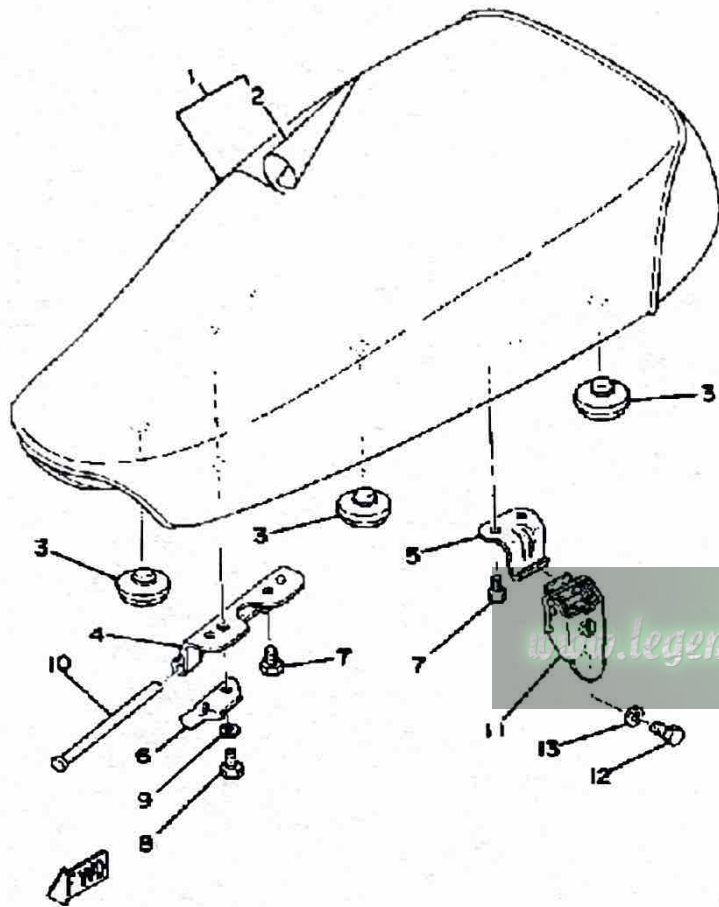
Ref. No.	Part Number	Description	Qty	Remarks
27	1T9-23318-00-00	HOLDER, CABLE 1	1	
28	97013-06012-00	BOLT	2	
29	92995-06100-00	WASHER, SPRING	2	

FUEL TANK

Ref. No.	Part Number	Description	Qty	Remarks
1	(538-24110-00-W2)	FUEL TANK	1	NEW WHITE
2	(3M1-24244-00-00)	GRAPHIC, FUEL TNK 1	2	
3	322-24611-02-00	BODY, CAP	1	
4	90430-35122-00	GASKET	1	
5	90445-09282-00	HOSE	1	
6	122-24181-00-00	DAMPER, LOCATING 1	2	
7	90201-06074-00	WASHER, PLATE	1	
8	90480-14088-00	GROMMET	1	
9	90387-07390-00	COLLAR	1	
10	90202-14077-00	WASHER, PLATE	1	
11	92995-06100-00	WASHER, SPRING	1	
12	97011-06025-00	BOLT (97001-06025)	1	
13	367-24500-04-00	FUEL COCK ASSEMBLY 1 (5U7-24500-00)	1	
14	355-24515-00-00	. NET, FILTER 2	1	
15	102-24522-01-00	. GASKET	1	
16	122-24521-00-00	. CUP, FILTER	1	
17	122-24532-00-00	. GASKET	1	
18	603-24531-01-00	. NUT	1	
19	98501-05030-00	. SCREW, PAN HEAD	1	
20	(355-24524-01-00)	LEVER, COCK	1	
21	355-24523-00-00	. VALVE	1	
22	(355-24518-00-00)	WASHER, WAVE	1	
23	95380-05600-00	. NUT	1	
24	90445-09066-00	HOSE	1	
25	90467-08003-00	CLIP	2	

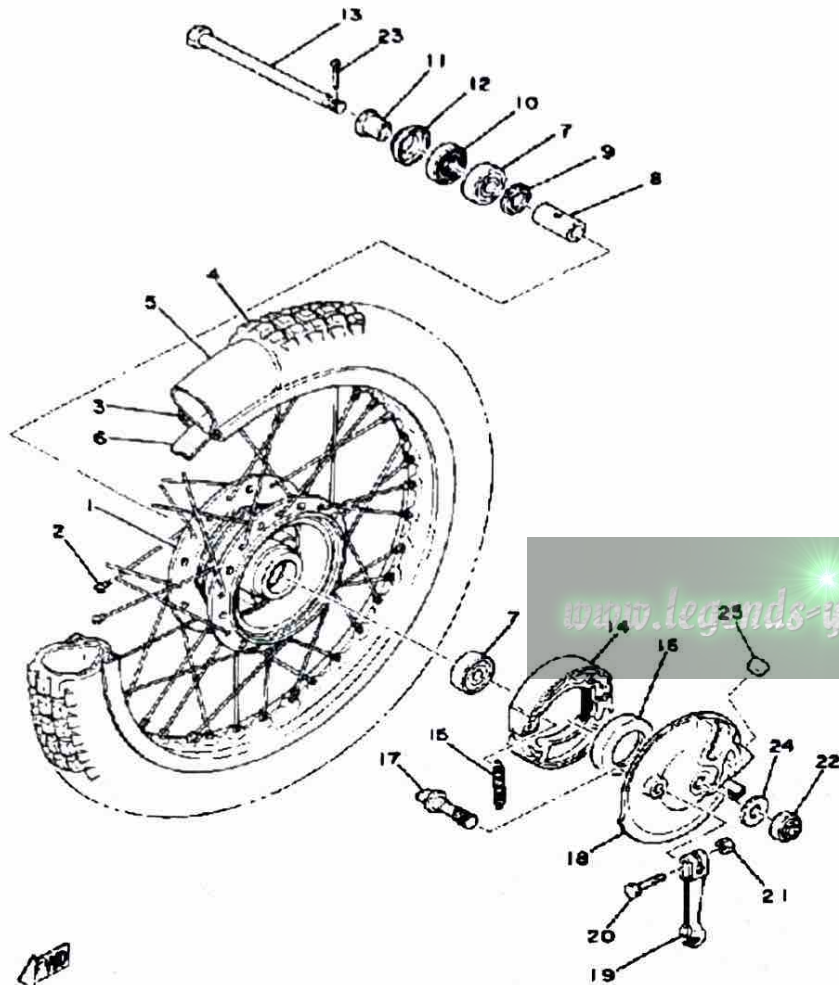


SEAT



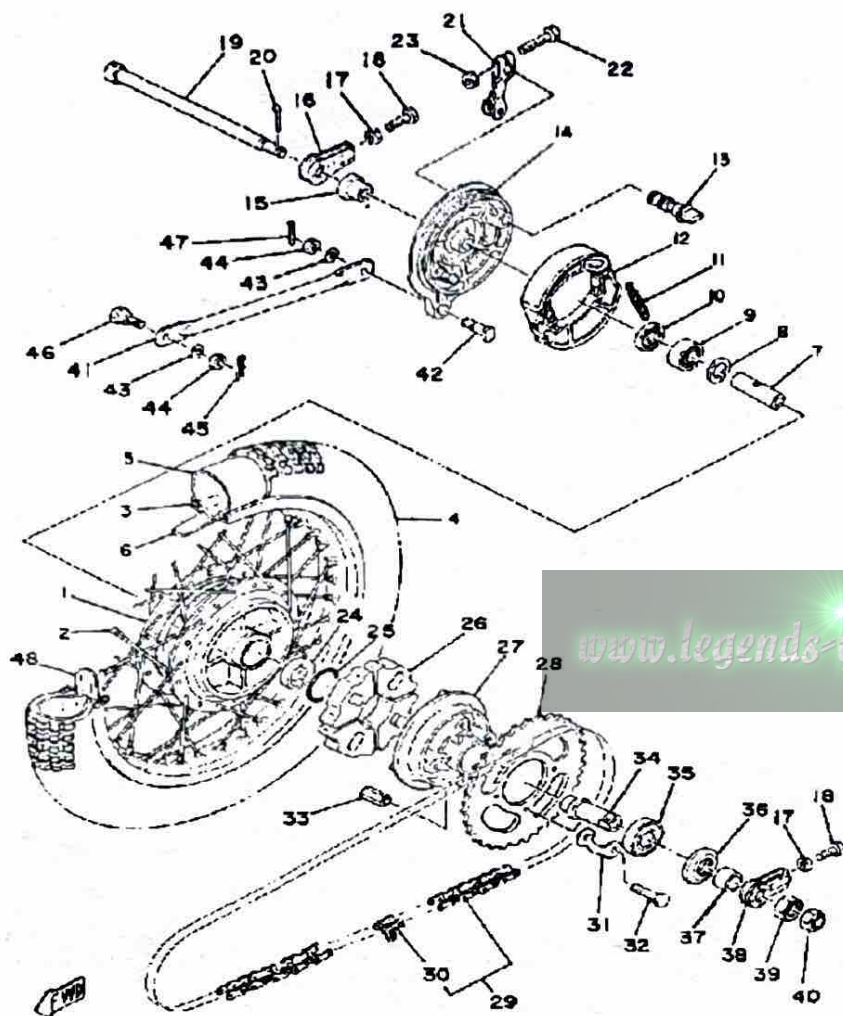
Ref. No.	Part Number	Description	Qty	Remarks
1	1T9-W2471-01-00	SINGLE SEAT ASSEMBLY ...	1	
2	1T9-24711-00-00	. COVER, SINGLE SEAT	1	
3	1L9-24741-00-00	PAD, SEAT	5	
4	538-24726-00-00	HINGE, SEAT	1	
5	278-24728-00-00	BRACKET, SEAT	1	
6	1T9-24768-00-00	STOPPER	1	
7	90101-06304-00	BOLT	3	
8	97013-06012-00	BOLT	1	
9	92995-06100-00	WASHER, SPRING	1	
10	1K8-24774-00-00	PIN	1	
11	214-24708-00-00	SEAT LEVER ASSEMBLY	1	
12	97013-06012-00	BOLT	1	
13	92901-06600-00	WASHER	1	

FRONT WHEEL



Ref. No.	Part Number	Description	Qty	Remarks
1	248-25111-00-98	HUB, FRONT	1	LOW GLOSS BLK
2	276-25104-40-00	SPOKE SET, FRONT	1	
3	94414-18007-00	RIM (1.40X18)	1	
4	(94125-18533-00)	250X18 FRONT TIRE	1	
5	94225-18194-00	TUBE (2.50-18)	1	
6	94325-18059-00	BAND, RIM	1	
7	93306-30103-00	BEARING (B6301Z)	2	
8	90560-12261-00	SPACER	1	
9	109-25315-00-00	FLANGE, SPACER	1	
10	93102-18008-00	OIL SEAL	1	
11	90387-12616-00	COLLAR	1	
12	481-25118-01-00	COVER, HUB DUST	1	
13	90102-12015-00	BOLT, WITH HOLE	1	
14	10X-W2536-00-00	BRAKESHOE SET-2PCS	2	
15	90506-16150-00	SPRING, TENSION (102-25333-00)	2	
16	93105-47007-00	OIL SEAL	1	
17	3Y6-25351-00-00	CAMSHAFT	1	
18	3M1-25121-00-98	PLATE, BRAKE SHOE	1	LOW GLOSS BLK
19	5H0-25155-00-00	LEVER, CAMSHAFT 1	1	
20	90101-06278-00	BOLT	1	
21	95380-06600-00	NUT	1	
22	95301-12900-00	NUT, SLOTTED	1	
23	91401-30030-00	PIN, COTTER	1	
24	90201-122A7-00	WASHER, PLATE	1	
25	90338-18014-00	PLUG	1	

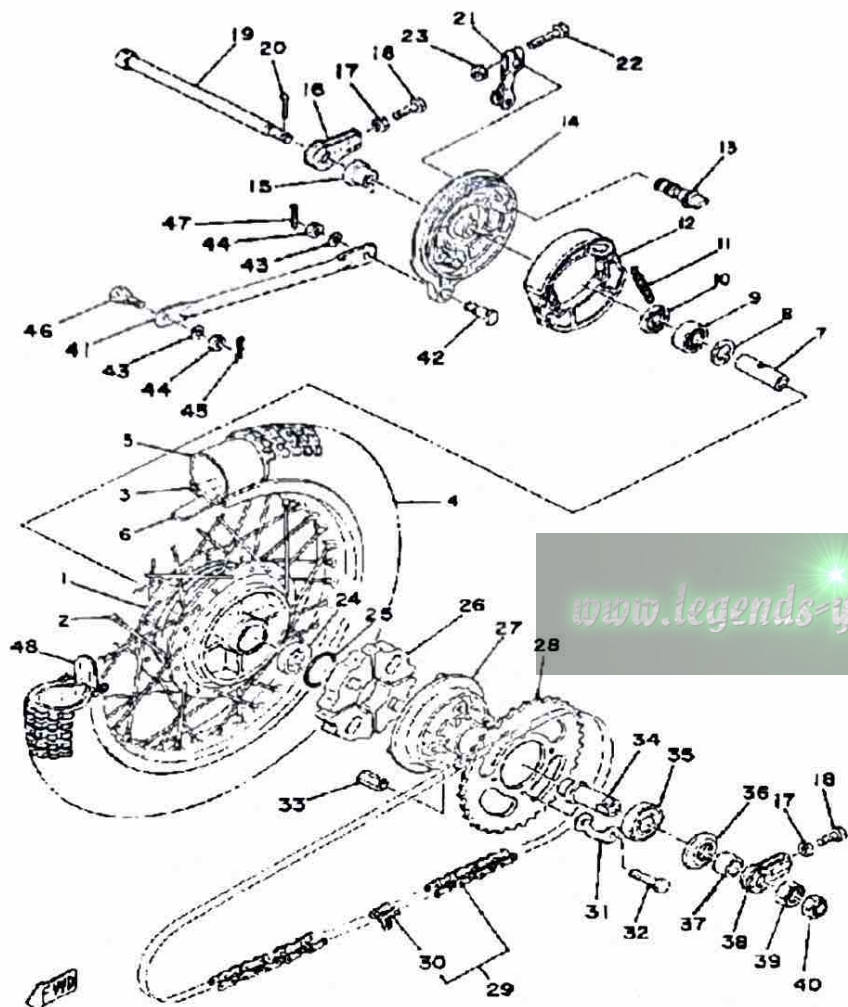
REAR WHEEL



Ref. No.	Part Number	Description	Qty	Remarks
1	99999-02213-00	HUB, REAR	1	LOW GLOSS BLK
2	538-25304-10-00	SPOKE SET, REAR	1	
3	94416-16224-00	RIM (1.60-16)	1	
4	94130-16368-00	TIRE (3.00-16)	1	
5	94230-16075-00	TUBE (3.00-16)	1	
6	94330-16058-00	BAND, RIM (3.00-16)	1	
7	90560-12145-00	SPACER	1	
8	109-25315-00-00	FLANGE, SPACER	1	
9	93306-30103-00	BEARING (B6301Z)	1	
10	93104-21016-00	OIL SEAL, SO-TYPE	1	
11	90506-16150-00	SPRING, TENSION (102-25333-00)	2	
12	10X-W2536-00-00	BRAKESHOE SET-2PCS	2	
13	3Y6-25351-00-00	CAMSHAFT	1	
14	1M3-25321-02-38	PLATE, BRAKE SHOE	1	LOW GLOSS BLK
15	90387-12102-00	COLLAR	1	
16	241-25389-10-00	PULLER, CHAIN 2	1	
17	95380-06600-00	NUT	2	
18	90101-06016-00	BOLT	2	
19	390-25381-01-00	AXLE, WHEEL	1	
20	91490-20020-00	PIN, COTTER	1	
21	1T9-25355-00-00	LEVER, CAMSHAFT	1	
22	90101-06278-00	BOLT	1	
23	95380-06600-00	NUT	1	
24	93306-30101-00	BEARING (B6301)	1	
25	93210-41041-00	O-RING	1	
26	304-25364-01-00	DAMPER	4	
27	296-25366-01-98	CLUTCH, HUB	1	
28	13M-25449-20-00	SPROCKET, DRVN 49T	1	U.R. YAMAHA BLACK

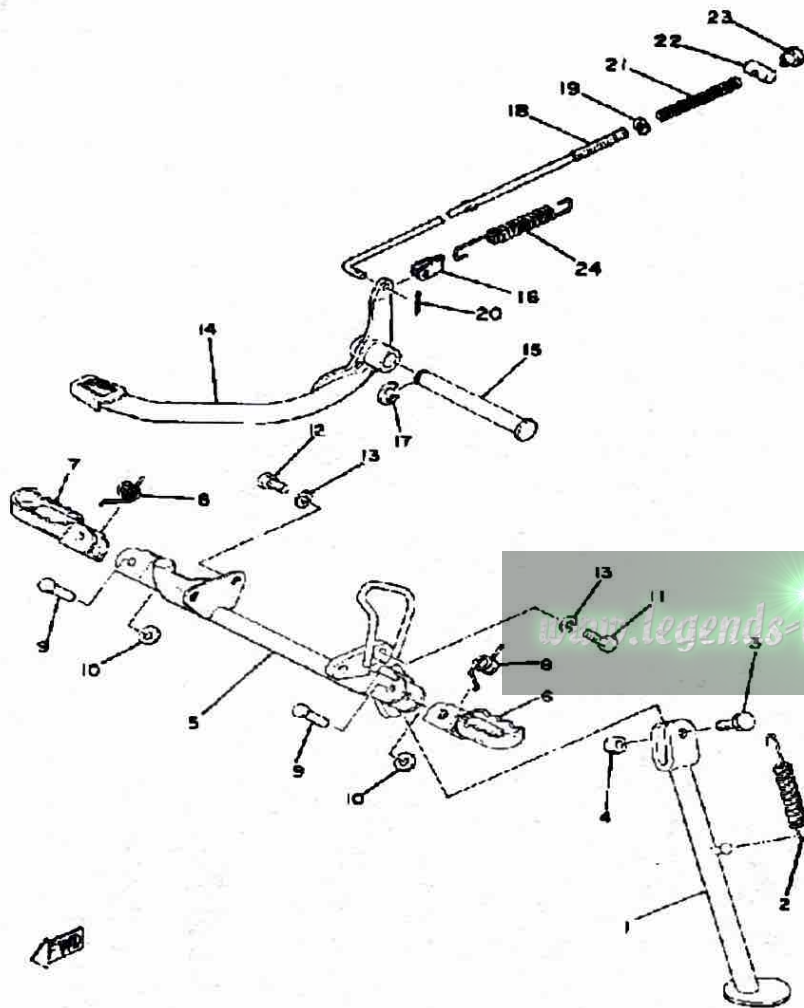
CONTINUED ON NEXT FRAME ►

REAR WHEEL



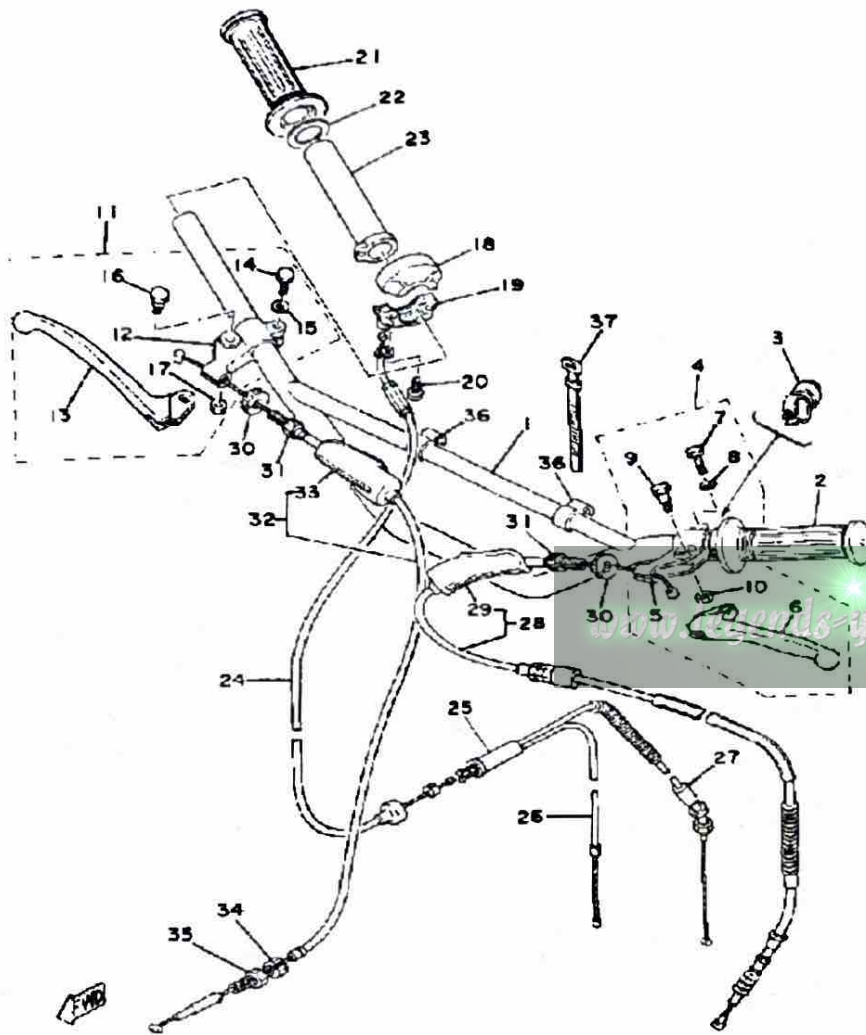
Ref. No.	Part Number	Description	Qty	Remarks
28	2U2-25448-10-00	SPROCKET, DRIVEN (48T)	1	STD YAMAHA BLACK
	4U5-25447-10-00	SPROCKET, DRVN47T (1T9-25446-10-33)	1	U.R. YAMAHA BLACK
29	94500-03104-00	CHAIN DRIVE (RS420-104L)	1	
30	94600-03001-00	JOINT, CHAIN	1	
31	102-25412-00-00	WASHER	2	
32	90101-08672-00	BOLT	4	
33	90179-08639-00	NUT, SPEC'L SHAPE (30)	4	
34	167-25387-00-00	AXLE, SPROCKET	1	
35	93306-00406-00	BEARING (B6004Z)	1	
36	93106-30004-00	OIL SEAL	1	
37	90387-18144-00	COLLAR	1	
38	241-25388-00-00	PULLER, CHAIN 1	1	
39	90170-18165-00	NUT	1	
40	90171-10004-00	NUT, CASTLE	1	
41	1T9-25371-00-00	BAR, TENSION	1	
42	90109-08183-00	BOLT	1	
43	92990-08100-00	WASHER	2	
44	95303-08700-00	NUT	2	
45	437-83525-00-00	CLIP	1	
46	90109-08368-00	BOLT	1	
47	91490-20020-00	PIN, COTTER	1	
48	5X2-25394-00-00	SPACER, BEAD	1	

STAND-FOOTREST-BRAKE PEDAL



Ref. No.	Part Number	Description	Qty	Remarks
1	367-27311-02-R4	STAND, SIDE	1	YAMAHA BLACK
2	90506-29052-00	SPRING, TENSION	1	
3	90109-08031-00	BOLT	1	
4	95303-08700-00	NUT	1	
5	1T9-27451-02-R4	FOOTREST	1	
6	22W-27411-01-90	FOOTREST 1	1	YAMAHA BLACK
7	22W-27421-01-90	FOOTREST 2	1	YAMAHA BLACK
8	90508-20023-00	SPRING, TORSION	2	
9	90243-08006-00	PIN	2	
10	90201-06042-00	WASHER, PLATE	2	
11	97313-08020-00	BOLT, HEXAGON	2	
12	97313-08016-00	BOLT, HEXAGON	2	
13	92990-08100-00	WASHER	4	
14	538-27211-00-R4	PEDAL, BRAKE	1	
15	2A3-27212-00-00	SHAFT, BRAKE PEDAL	1	
16	1T9-27254-00-00	HOOK	1	
17	93430-12008-00	CIRCLIP	1	
18	1T9-27231-00-00	ROD, BRAKE	1	
19	92990-06200-00	WASHER	1	
20	91490-20020-00	PIN, COTTER	1	
21	90501-10245-00	SPRING, COMPRESSION	1	
22	90249-12008-00	PIN	1	
23	90179-06411-00	NUT	1	
24	90506-20157-00	SPRING, TENSION	1	

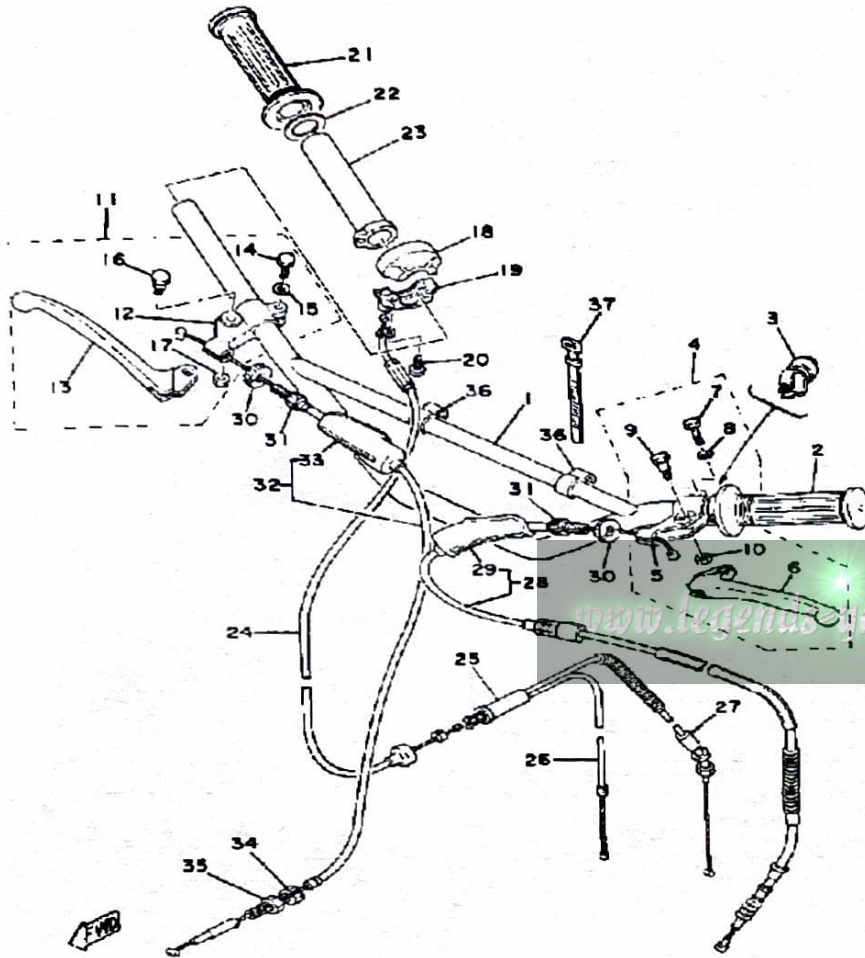
HANDLE-WIRE



Ref. No.	Part Number	Description	Qty	Remarks
1	3M1-26111-01-00	HANDLEBAR	1	
2	2N3-26241-00-00	GRIP (LEFT)	1	
3	3M1-83976-00-00	SWITCH, HANDLE 1	1	
4	214-82910-06-00	LEVER HOLDER ASSEMBLY 1	1	
5	214-82911-01-00	. HOLDER, LEVER 1	1	
6	214-83912-00-00	. LEVER 1	1	
7	97003-06022-00	. BOLT, HEXAGON (97301-06022)	1	
8	92995-06100-00	. WASHER, SPRING	1	
9	90109-06797-00	. BOLT	1	
10	95601-06100-00	. NUT, U	1	
11	(233-82920-34-00)	LEVER HOLDER ASSEMBLY 2	1	
12	233-82921-31-00	. HOLDER, LEVER 2	1	
13	233-83922-30-00	. LEVER R	1	
14	97003-06022-00	. BOLT, HEXAGON (97301-06022)	1	
15	92995-06100-00	. WASHER, SPRING	1	
16	90109-06797-00	. BOLT	1	
17	95601-06100-00	. NUT, U	1	
18	1V1-26281-00-00	CAP, GRIP UPPER	1	
19	1V1-26282-00-00	CAP, GRIP LOWER	1	
20	98580-05016-00	SCREW, PAN HEAD	2	
21	2N3-26242-00-00	GRIP RH (R.H)	1	
22	90201-261L1-00	WASHER, PLATE (1V1-26249-00)	1	
23	1V1-26243-00-00	TUBE, THRTL GUIDE	1	
24	3M1-26311-00-00	CABLE, THROTTLE 1	1	
25	214-26261-00-00	CONNECTOR, CABLE	1	
26	1T9-26312-10-00	CABLE, THROTTLE 2	1	
27	1T9-26321-10-00	CABLE, PUMP	1	

CONTINUED ON NEXT FRAME ►

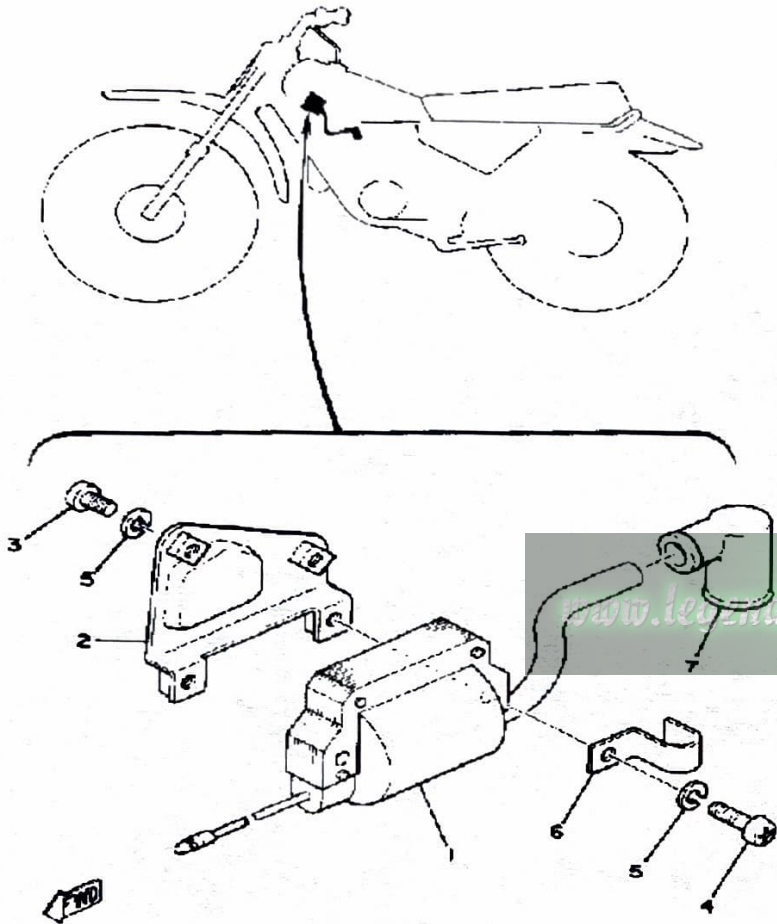
HANDLE-WIRE



Ref. No.	Part Number	Description	Qty	Remarks
28	3M1-26335-00-00	CABLE, CLUTCH	1	
29	382-26372-01-00	. COVER, HANDLE LEVER ...	1	
30	90179-08316-00	NUT	2	
31	90123-08046-00	BOLT	2	
32	3M1-26341-00-00	CABLE, BRAKE	1	
33	498-26372-00-00	. COVER, HANDLE LEVER 1 ..	1	
34	90123-06011-00	BOLT	1	
35	90179-06143-00	NUT, SPEC"L SHAPE	1	
36	90468-15064-00	CLIP	2	
37	437-83936-01-00	BAND, SWITCH CORD	2	

ELECTRICAL

Ref. No.	Part Number	Description	Qty	Remarks
1	5G4-82310-40-00	IGNITION COIL ASSEMBLY (J17-82310-21)	1	
2	336-82316-01-00	BRACKET, IGNITION COIL	1	
3	98580-06012-00	SCREW, PAN HEAD	2	
4	98511-06025-00	SCREW PAN HEAD (92501-06025)	2	
5	92995-06100-00	WASHER, SPRING	4	
6	90462-05005-00	CLAMP	1	
7	(ACC-01100-60-00)	MX100 LIGHTING KIT		
	56J-82370-00-00	PLUG CAP ASSEMBLY	1	



CHARGING SYSTEM	Flywheel Magneto
Battery: Model / Spec. Grav. / Chg. Rate	φ
Maximum Output	φ
TROUBLESHOOTING	
Field Coil Color Code / Ω	φ
Charge Coil Color Code / Ω	φ
IGNITION SYSTEM	Flywheel Magneto - External Rotor
Ignition Timing	1.8mm BTDC
Spark Plug Type	NGK B-7ES
Spark Plug Gap / Torque / Cap Ω	0.6 ~ 0.8mm / 2.3 m·kg / φ
Point Gap / Condenser Capacitance	0.3 ~ 0.4mm / 0.25 μF ± 15%
TROUBLESHOOTING	
Ignition Coil Test Gap / Primary Ω / Secondary Ω	6mm / 1.0 Ω ± 10% / 5.9K Ω ± 20%
Pulse Coil or Pick-up Coil Color Code / Ω	φ
Source Coil Color Code / Ω	Blk-Wht ~ Gnd / 1.70 Ω ± 10%
LIGHTING SYSTEM	
Headlight / Taillight / Signal Rating	φ
TROUBLESHOOTING	
Lighting Coil Color Code / Ω	φ
TORQUE VALUES	
Front Axle Nut	12 x 1.25: 4.3 m·kg
Front Axle Holder Nut	φ
Rear Axle Nut	10 x 1.25: 3.9 m·kg
Rear Axle Pinch Bolt	φ
Clutch Nut	12 x 1.0: 4.5 m·kg
Drain Plug	12 x 1.5: 2.5 m·kg
Cylinder Head Cover	φ
Cylinder Head:	8 x 1.25: 2.5 m·kg
Engine Mounting Bolts: Front, Upper	8 x 1.25: 2.6 m·kg
Rear, Upper	8 x 1.25: 2.6 m·kg
Rear, Lower	10 x 1.25: 3.9 m·kg

φ Does Not Apply to This Model

* Available From Yamaha Parts Distributors, Inc.

www.legends-yamaha-enduros.com