

www.legends-yamaha-enduros.com

COSMO

ACCESSORIES



COSMOPOLITAN MOTORS, INC.,

HATBORO, PA. 19040 (215) OS 2-9100

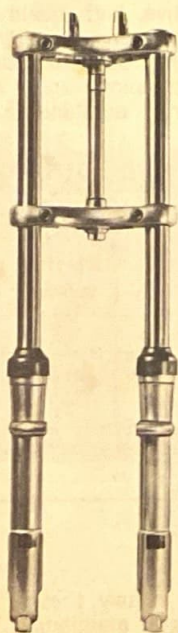


CONTENTS

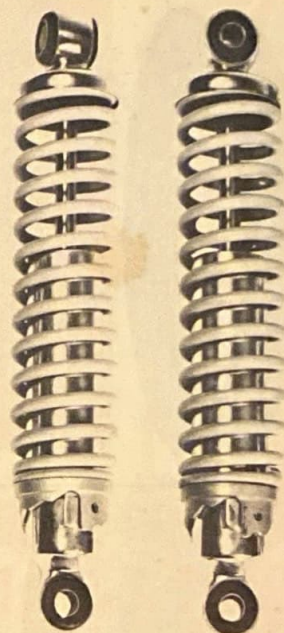
BATTERIES, SAFA	PAGE 8
BELTS, ELASTIC	16
BRAKES, ROAD OR RACING	2
BULBS, HEAD LIGHT	9
BULBS, TAIL LIGHT	9
CARBURATORS, DELLORTO	3
CHAINS, MOTORCYCLE	9
CHAIN OIL	17
CLUTCH, MINI BIKE	17
EQUIPMENT, GENERAL	8 and 9
EQUIPMENT, RACING AND SPEED	1, 2, 3, 4
FACE SHIELDS	15
FENDERS	9
FOOT PEGS	13
FORKS, BARONI	1
GAS TANKS, SPORT AND CUSTOM	3 and 4
GLOVES, DRIVING AND RACING	16
GOGGLES, BARUFFALDI	14 and 15
HAND GRIPS	12
HANDLEBARS, MOTOCROSS	2
HELMETS	10 and 11
HELMET DISPLAY STAND	11
HOT ITEMS	17
JACKETS, RACING	16
LEVER COVERS	12
LUGGAGE CARRIERS	13
LUGGAGE STRAPS	13
MIRRORS	12
RACING SUIT	16
RIMS, BARONI RACING	2
RIM STRIPS	7
SADDLES, RACING AND CUSTOM	4
SADDLE BAGS	13
SHOCKS, BARONI	1
SPARK PLUGS	5
SPRAY PAINTS	17
THROTTLES, RACING	2
THROTTLES	12
TIRES, MOTORCYCLE	6 and 7
TOURING ACCESSORIES	12 and 13
WINDSHIELDS	13

racing & speed equipment

FOR MOTOCROSS & ROAD RACING BARONI FORKS & SHOCKS



Manufactured by a former Italian racer, Baroni forks and shocks are the most highly developed suspension units available. The forks feature a unique double-dampening system, controlling the travel progressively in both directions. A captive oil reservoir prevents bottoming as the last $\frac{3}{4}$ " of extension travel is hydraulically safety-dampened. Stanchion tubes are Swedish Chrome-moly steel and hard chrome plated. Crowns and fork-legs are pressure molded of Avunol R (developed for the new Concorde supersonic aircraft). Legs are cast and precision machined to a high lustre and use SAE 20 oil. Fork stems (available for most machines) screw into the lower crown for additional strength. Stem removal provides lower bearing extraction automatically. A wiping boot prevents dirt from reaching the double oil seals. Baroni rear shocks (also made of Avunol R) have 5 positions of adjustment with no special tools needed. These shocks are extremely strong and light with a full 3 inches of travel.



BARONI FORKS

TYPE	ROAD RACE			MOTOCROSS		
	Small	Med.	Large	Small	Med.	Large
LENGTH	27"	27 $\frac{3}{8}$ "	28 $\frac{3}{4}$ "	27"	27 $\frac{3}{8}$ "	28 $\frac{3}{4}$ "
FORK TRAVEL	5"	5"	6 $\frac{1}{2}$ "	6 $\frac{1}{2}$ "	7"	7 $\frac{1}{4}$ "
FORK OIL CAPACITY PER TUBE (cc's)	120	220	250	120	220	250
WEIGHT	11 lbs.	13 lbs. 5 oz.	16 lbs.	11 lbs. 6 oz.	14 lbs. 7 oz.	19 lbs. 6 oz.
AXLE BORE	12mm	15mm	15mm	12mm	15mm	15mm
PRICE	99.50	139.00	145.00	99.50	145.00	149.00



BARONI SHOCKS

TYPE	No. 280	No. 300	No. 330
WEIGHT	3 lbs.	3 $\frac{1}{4}$ lbs.	3 $\frac{1}{2}$ lbs.
Eye to Eye Length	11"	11 $\frac{1}{4}$ "	13"
PRICE PER PAIR	44.00	44.00	44.00

STEM No.	FITS	DIMENSIONS:		
		A	B	C
B 1-B	B.S.A. Twins, Gold Star	6-7/16"	1 $\frac{1}{8}$ "	1-3/16"
B 1-V	B.S.A. Victor	6-3/16	1	1-1/16
B 2-M	Late Metisse (Tapered Bearing)	6-13/16	1	1
B 2-T	Triumph, Ducati, Sprint	6-13/16	1	1-1/16
	Early Metisse			
B 3-G	Greeves, Maico	7 $\frac{1}{4}$	1	1
B 4-H	Honda 305, CB450, Yetman	7 $\frac{1}{8}$	1-1/32	1-3/16
B 6-H	Honda 350, CL450	7 $\frac{3}{8}$	1-1/32	1-3/16

These stems can be modified to fit other machines.

racing & speed equipment

BORRANI RACING RIMS



SIZE CHART

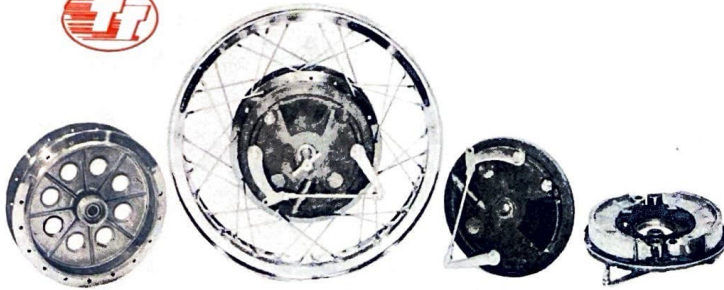
RIMS WITH HOLES DRILLED			UNDRILLED RIMS	
Rim Size	No. of Holes	Price	No. of Holes	Price
18x2	36	20.00	40	16.00
18x2¼	36 and 40	22.00	36 and 40	18.00
18x2½	36 and 40	24.00	36	20.00
18x3	36 and 40	26.00	36 and 40	22.00
19x2	40	22.00		
19x2¼	36 and 40	24.00		
19x2½	36 and 40	26.00	40	22.00
19x3	36 and 40	26.00		
21x2½	40	26.00	40	22.00

Attractive, high quality alloy rims reduce un-sprung weight for better handling. Serrated beads prevent tire "creeping" under stress. Used by world's outstanding racers.

CONVERSION CHART

European Rim Designation	American Rim Width In Inches	Suitable Tire Widths
WM0	2	2.25-2.50
WM1	2¼	2.75-3.00
WM2	2½	3.00-3.50
WM3	3	4.00

ROAD OR RACING FRONT DRUM BRAKES



Master-crafted in Italy, these 9" brakes are of high strength aluminum. Tremendous straight-line stopping power, large twin air scoops, central webbed support and bonded metal-impregnated brake linings. Knock off type spindle. 40.8 sq. inch lining area, 62.7 sq. inch swept area. Drum weighs 20 lbs. Complete wheel assembly (with Borrani alloy rim) weighs 24 lbs.

DRUM WITH SPINDLE 139.00 FDB
COMPLETE WHEEL ASSEMBLY WITH
36 SPOKES AND BORRANI ALLOY RIM
(Specify WM 2x18 or WM 2x19).
159.00 FDBR

MOTOCROSS HANDLEBARS



Strong, durable construction with welded crossbar. Chrome-plated for competition or street use. 4½" rise, 30" width, 7/8" diameter. 6.75 MXH

FAST ACTION RACING THROTTLE



¼ turn from idle to wide open. For competition and limited street use. Light weight. Built-in tensioners. For 7/8" handlebars. Black ribbed grips 3.75 RT

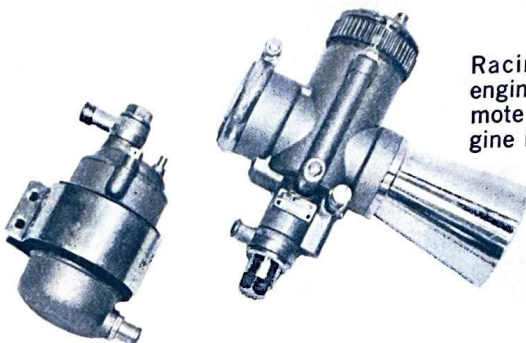
racing & speed equipment

DELLORTO CARBURETORS

TYPE SS-I

SIZES AVAILABLE

25mm	59.40	32mm	78.00
26mm	59.40	33mm	83.00
27mm	64.54	35mm	83.00
28mm	64.54	40mm	109.45
30mm	65.54	42mm	109.45



Racing type for 2 or 4 cycle engines 125cc to 750cc. Incl. remote float chamber. Fits to engine in all positions.

TYPE UB-BS

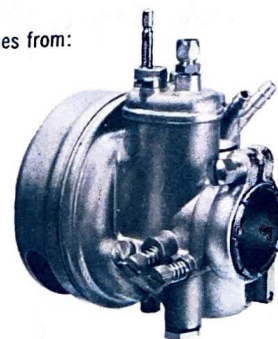
UB20BS-20mm	28.40
UB22BS-22mm	33.50
UB24BS-24mm	35.31
UA16S-16mm	26.18



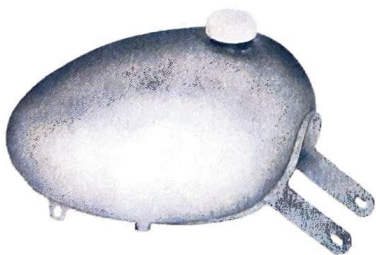
TYPE ME-BS

Adapts to 2 or 4 cycle engines from:
75 to 125cc

15mm	26.60
16mm	27.72
18mm	28.71

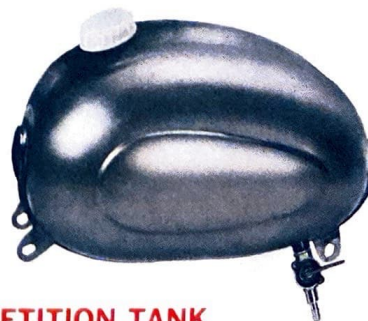


SPORT & CUSTOM GAS TANKS



DRAGSTER TANK

Heavy gauge steel. Extra-wide frame channel and mounts. 2 petcock fittings and tank cap.
 $\frac{3}{4}$ gallon (less petcocks) 19.95/607-34
 $1\frac{1}{2}$ gal. (less petcocks) 21.95/607-112



COMPETITION TANK

Universal mounts. $1\frac{1}{2}$ gallon capacity. $2\frac{3}{4}$ lbs. includes cap.
 (less petcocks) 17.95/606
 Petcocks, each 2.25/606-P

racing & speed equipment

COMPETITION & CUSTOM SADDLES



SCRAMBLES SADDLE

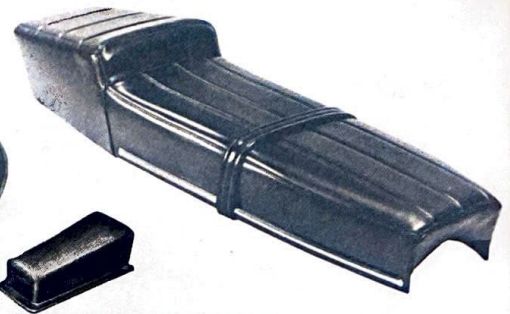
For customizing or racing. Low riding position improves handling. Thick foam padding. Universal mounting studs. 21.95 SCS



SOLO SADDLE

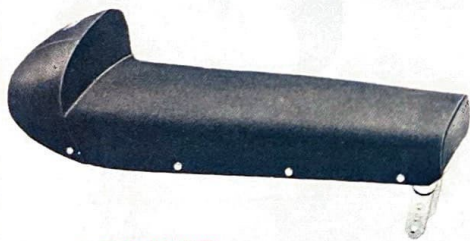
For racing or customizing. Beautifully crafted and styled. Thick foam rubber padding. Adjustable front mounting brackets. www.bike.com 11.95 SS

SOLO SEAT SPRINGS. Set of 2 cadmium plated springs for solo saddle. 1.25 pr. SSS



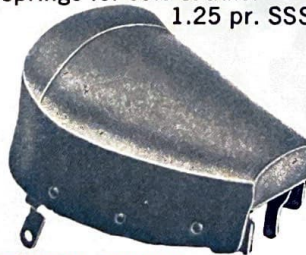
GRAND PRIX CUSTOM DUAL SADDLE

For racing or customizing. Thick foam padding, pleated cover, chrome edging. Rear passenger hand strap. 21.95 GPS



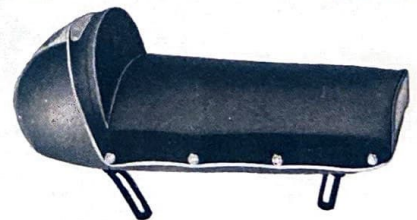
LARGE ROAD RACING SADDLE

Aluminum alloy, foam and suede leather. 3 3/4 lbs. 24 x 6. Also in smooth grain leather . . . 28.00 506



THICK FOAM PADDED SOLO SEAT

Converts dual seat machine into a solo. Universal mounting brackets. 4.95 505



FENDER BACK SADDLE

Steel frame, foam rubber and suede leather. 3 lbs. 19 x 7" . . 21.95 507



STING RAY CUSTOM TANK, SEAT/FENDER

This beautiful custom combination is available in candy metallic blue, bright red or silver. Complete with all mounting hardware for custom installation. Streamlined 2.5 gal. steel tank and thick foam pleated seat are available as a set or separately.

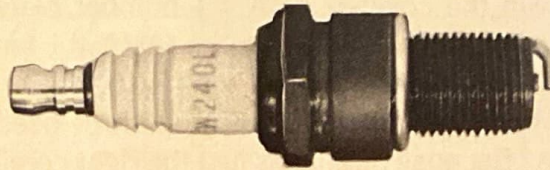
Sting Ray tank and seat assembly . 50.00 SRA
Sting Ray tank only 28.00 SRT
Sting Ray seat/fender only 22.00 SRS

thermosprint

THE NEW MARELLI SPARK PLUGS

WITH "HIGH PENETRATION" ELECTRODE

- DESIGNED ESPECIALLY FOR MOTORCYCLES. ■ WEATHERPROOFED FOR EXPOSED MOTORCYCLE ENGINES.

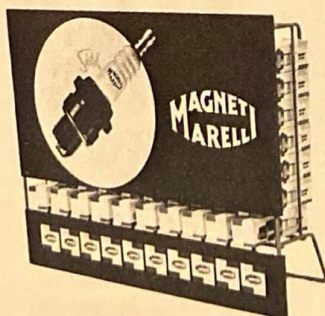


ALL SPARK PLUGS 1.20

THREAD SIZE		HEAT RANGE	MARELLI HEAT RANGE COMPARISON CHART									
SIZE	RANGE	MARELLI	CHAMPION	BOSCH	BERU	LODGE	K.L.G.	AUTOLITE	A.C.	MARCHAL	NGK	
14mm. 1/2"	Hot	CW150N	L10; H10	W145T1	145/14	CN	F50; FA50	AE6; AL7	45F; 45L	36; 36B; 36D	B4H	
		CW225N	L109; H8	W225T1	225/14	HN; H14	F75	AE3	42F	36P; V36	B6H	
		CW240N	L7	W240T1	240/14	2HN	F80	AE2	41F	34S	B6H	
	Cold	CW250N	L85						AE2			B6H
		CW260N	L5-L11S	W260T1	260/14	3HN	F100					B7H B7HC
14mm. 3/4"	Hot	CW200L	N 8B	W175T2	175/14/3	HBLN	FE70	AG5; AG4	45XL	36HS; 35HS	B6E	
		CW225	N A8						44XL			
		CW225L	N A8; N 5	W225T2	225/14/3	HLN	FE75	AG4; AG3	44XL	35HS		
	Cold	CW240L	N 5; N 4	W240T2	240/14/3	2HLN	FE80	AG3; AG2	43XL	34HS	B6E	
		CW260L	N 4; N 3	W260T2	260/14/3	3HLN	FE100	AG2		34HS; H34R	B7EC	
18mm. 1/2"		CM150A		M145T1	145/18	C1; C3	M50	B7; BT6	C85	21C; 21E 21L	A6	

		MARELLI	CHAMPION	BOSCH	BERU	LODGE	K.L.G.	AUTOLITE	MARCHAL	NGK
Racing 14mm. 1/2"	Hot	CW275A	LA11	W270T16	280/14	R47	F280	AE603	RR33	B8HN
		CBW 1001A	J57R			R49	F280	AE603		B10HN
	Cold	CW11A	LA12	W310T16	310/14	R50	F290	AE403	RR32	B11HN
Racing 14mm. 3/4"	Hot	CW275B	N58R	W270T17	280/14/3S	RL47	FE250	AG603	RR33H	B8E
			(WA10)					FE260		
	Cold	CW11B		W310T17	310/14/3	RL50	FE290	AG403	RR32H	B9E

ALL RACING PLUGS 2.50



FREE COUNTER DISPLAY!

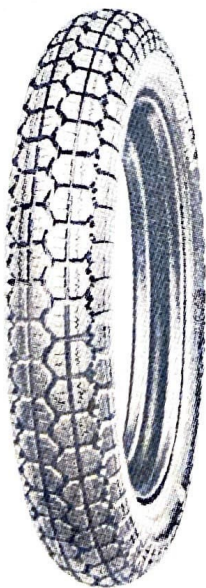
WITH PURCHASE OF TEN BOXES OF PLUGS WE WILL SEND COUNTER DISPLAY FREE OF CHARGE. COUNTER DISPLAY CAN HOLD 70 SPARK PLUGS.

PIRELLI

MOTORCYCLE TIRES

NUMBER ONE! You don't have to use Pirelli tires to win the coveted AMA #1 number plate, but it helps. Just ask Gene Romero (AMA #1 for 1971), or Mert Lawwill (AMA#1 for 1970), or Gary Nixon (AMA #1 for 1968 and '69). All three used Pirelli. Why? Because Pirelli has just the right combination of toughness and tractability to really grip the groove and provide that extra margin of safety. Whether you're a racer or not, specify Pirelli. Tread patterns available for all types of riding. They may not make you a winner but you'll ride like a pro!

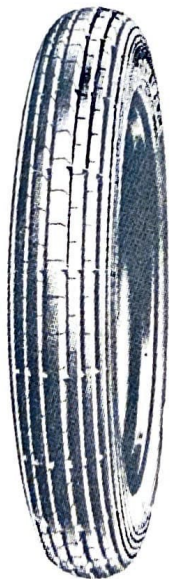
DEALERS: Order now! When your customers want Pirelli, no substitute or imitation will do. Make sure you always have a good supply on hand!



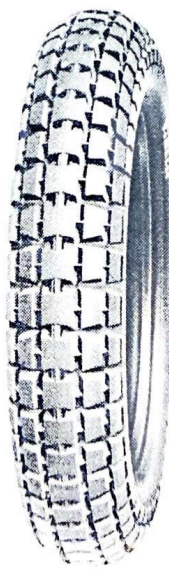
Universal



Universal
Road Tread



Rib



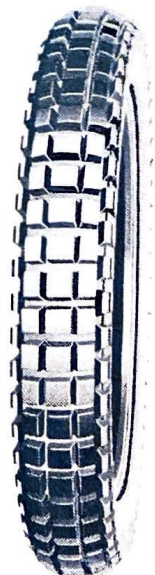
Semi-Knobby



Motocross



Spanish
Motocross



Spanish Trials

PIRELLI

ITALIAN TIRES OF SUPERB QUALITY. FAMED FOR SUPERIOR ROADHOLDING, TRACTION AND STEERING SAFETY.

SIZE	LIST	EXCISE TAX
UNIVERSAL ROAD TREAD 399		
2¼ x 16 Univ.	6.75	.20
2½ x 16 Univ.	6.75	.20
2¼ x 17 Univ.	6.75	.20
2 x 18 Univ.	6.00	.15
2¼ x 18 Univ.	6.75	.22
2¾ x 18 Univ.	6.75	.25
2 x 19 Univ. WW	6.75	.22
2¼ x 19 Univ.	6.00	.22
2 x 22½ WW Univ.	6.75	.22
2 x 23 WW Univ.	6.75	.20
2¼ x 23 Univ.	6.00	.22
2¼ x 22½ Univ.	6.75	.20
1¾ x 20 Univ.	6.00	.17
2¼ x 20 Univ.	6.00	.22
RIB (For Light Motorcycles)		
2¼ x 16 Rib	6.75	.20
2½ x 17 Rib	7.50	.22
2 x 18 Rib	6.00	.15
2¼ x 18 Rib	6.75	.20
2¾ x 18 Rib	6.75	.25
1¾ x 20 Rib	6.00	.17
UNIVERSAL (TREAD 353)		
350 x 15 U	15.00	.65
275 x 16 U	13.00	.80
325 x 16 U	16.00	1.08
350 x 16 U	16.50	1.12
500 x 16 U	25.00	1.90
225 x 17 U	9.75	.53
250 x 17 U	11.25	.63
275 x 17 U	13.50	.67
300 x 17 U	15.50	.77
350 x 17 U	17.00	.95
250 x 18 U	13.00	.67
275 x 18 U	14.00	.67
300 x 18 U	15.50	.95
325 x 18 U	17.00	1.00
350 x 18 U	18.50	1.25
400 x 18 U	21.00	1.35
250 x 19 U	12.00	.63
275 x 19 U	14.50	.67
300 x 19 U	16.00	1.00
325 x 19 U	17.00	1.12
350 x 19 U	19.50	1.24
400 x 19 U	21.50	1.35
UNIVERSAL-SUPERSPORT		
400 x 18 U	31.50	1.25

SIZE	LIST	EXCISE TAX
RIB		
250 x 17 R	11.25	.63
275 x 17 R	12.75	.57
250 x 18 R	11.25	.63
275 x 18 R	12.00	.57
300 x 18 R	12.75	.95
350 x 18 R	18.00	.95
250 x 19 R	11.25	.67
275 x 19 R	12.00	.67
300 x 19 R	13.50	.96
325 x 19 R	15.00	1.08
350 x 19 R	18.00	1.15
SEMI-KNOBBY		
325 x 16 SK	18.00	1.08
250 x 17 SK	13.50	.67
350 x 18 SK	20.25	1.10
250 x 19 SK	12.75	.67
MOTOCROSS		
350 x 7 MC	7.00	.40
300 x 10 MC	9.00	.45
250 x 17 MC	14.00	.67
300 x 17 MC	17.50	.95
300 x 18 MC	18.00	.90
350 x 18 MC	21.00	1.15
400 x 18 MC	24.00	1.25
250 x 19 MC	15.00	.77
275 x 19 MC	16.50	.84
300 x 19 MC	18.00	1.15
350 x 19 MC	21.50	1.15
400 x 19 MC	24.00	1.35
TRIALS & MOTOCROSS SPANISH TREAD		
350 x 19 T	21.50	1.20
400 x 18 T	26.25	1.35
300 x 21 MC	19.00	1.00
400 x 18 MC	24.00	1.20
SCOOTER & MINIBIKE		
300 x 5 R	7.25	.42
350 x 7 MC	7.00	.40
350 x 8 Univ.	7.50	.42
350 x 5 Univ.	7.50	.42
400 x 8 Univ.	8.25	.56
275 x 9 Univ.	7.50	.30
300 x 10 Univ.	8.25	.33
300 x 10 MC	9.00	.45
350 x 10 Univ.	8.25	.50
350 x 10 WW SC	12.00	.58
300 x 12 Univ.	10.50	.51
350 x 12 Univ.	11.25	.75
250 x 13 Univ.	6.75	.45
2¼ x 16 Univ.	6.75	.20

SIZE	LIST	EXCISE TAX
175 x 20	2.25	.06
225 x 20	3.00	.12
200 x 18	2.25	.06
350 x 8	3.00	.10
400 x 8	3.00	.12
275 x 9	3.00	.12
300 x 10	3.00	.12
350 x 10	3.00	.12
300 x 12	3.00	.12
350 x 12	3.00	.12
250 x 13	3.00	.12
225 x 23	3.00	.12
350 x 15	3.00	.12
275 x 16	3.00	.12
300/325 x 16	3.00	.12
350 x 16	3.00	.12
300/325 x 21	3.00	.12
225 x 17	3.00	.12
250/275 x 17	3.00	.12
300 x 17	3.00	.12
350 x 17	3.00	.12
200 x 18	2.25	.06
225 x 18	3.00	.12
250/275 x 18	3.00	.12
300/325 x 18	3.00	.12
350 x 18	3.00	.12
400 x 18	3.00	.12
250 x 19	3.00	.12
275 x 19	3.00	.12
250 x 19	3.00	.12
350 x 19	3.00	.12
400 x 19	3.00	.12
500 x 16	4.75	.22

WHEN YOU ORDER 10 OR MORE TIRES YOU ARE ENTITLED TO ASK FOR FREE PIRELLI TIRE STAND.

RIM STRIPS

Protect tube from spokes
Genuine PIRELLI Rim Strips
Sizes available: 17" — RS-17
18" — RS-18
19" — RS-19
.50

New Plastic Rim Strip

Sizes available: 17" — RSP-17
18" — RSP-18
19" — RSP-19
.30



general
equipment for
all motorcycles



SAFA

DRY CHARGE BATTERIES

These high quality batteries are specially designed to withstand the constant vibration caused by motorcycle. Triple insulation for longer life and trouble free performance.



Bat. No.	Fits Machines Listed Below	Amp. Hrs.	Volts	Length	Width	Height	Price
31L3	Yamaha, YDS-1, YD-2, YD-3, YA-3 Yamaguchi 250, TT125 Ducati 1959 on 250cc up AJS Matchless 1947 on Norton 1945 to 1949 Triumph 1960, 6T, T110 Ariel 1946 on Enfield 1947 to 1960 all Zundapp, Lambretta BMW R 26, Parilla Olimpia all Capriolo all	6	6	4 $\frac{3}{4}$	1 $\frac{3}{4}$	4	8.05
31L4	Most Triumphs Parilla Tourist, Parilla Wildcat 125cc Benelli Cobra	8	6	4 $\frac{7}{8}$	2 $\frac{3}{8}$	5	9.25
3V2	Benelli 125 & 200cc Sprite Benelli 250 Barracuda	8	6	3 $\frac{1}{4}$	3 $\frac{1}{2}$	5 $\frac{1}{2}$	9.25
3L3	Parilla 175cc & 200cc Norton E-1 1950 on Most B.S.A.s	12	6	4 $\frac{1}{2}$	3 $\frac{1}{2}$	5 $\frac{1}{2}$	10.35



WARRANTY: ALL GOODS ARE UNCONDITIONALLY GUARANTEED AGAINST DEFECTIVE WORKMANSHIP AND MATERIAL.

DELIVERY: EVERY EFFORT IS MADE TO SHIP ALL ORDERS COMPLETE THE SAME DAY. YOU WILL BE NOTIFIED OF A BACK ORDER AND WE WILL SHIP THIS AS SOON AS IT IS RECEIVED UNLESS YOU REQUEST THE ITEM CANCELLED. YOU WILL BE NOTIFIED BEFORE A BACK ORDER IS SHIPPED IF 45 DAYS HAVE EXPIRED.

TERMS: C.O.D. OR CASH WITH ORDER! A 20% DEPOSIT SHOULD ACCOMPANY THE FIRST C.O.D. ORDER. OPEN ACCOUNT MAY BE ESTABLISHED BY SUBMITTING 3 SATISFACTORY CREDIT REFERENCES. ALL OPEN ACCOUNT PURCHASES ARE DUE BY THE 10TH OF THE FOLLOWING MONTH AND BECOME DELINQUENT THIRTY DAYS FROM THE DATE OF THE INVOICE.

SHIPPING: MERCHANDISE IS SENT F.O.B. OUR PLANT VIA THE MOST PRACTICAL AND ECONOMICAL CARRIER. PLEASE SPECIFY ANY PREFERENCE.

FREIGHT ALLOWANCE: WE WILL REIMBURSE YOU FOR FREIGHT ON ACCESSORIES ORDERS OF \$200.00 OR MORE. RETURN PAID FREIGHT BILL WITH OUR INVOICE NUMBER AND WE WILL ISSUE CREDIT TOWARDS YOUR NEXT ORDER. BACK ORDERED ITEMS SHIPPED AT A LATER DATE DO NOT QUALIFY FOR FREIGHT ALLOWANCE.

CLAIMS: OUR RESPONSIBILITY FOR SAFE ARRIVAL OF MERCHANDISE ENDS WHEN IT IS ACCEPTED BY THE CARRIER. ALL CLAIMS FOR DAMAGE OR SHORTAGE SHOULD BE MADE WITH THE CARRIER IMMEDIATELY.

RETURNS: PERMISSION MUST BE SECURED FIRST. WHERE THE FAULT IS NOT OURS, A 20% HANDLING CHARGE WILL BE MADE. ALWAYS INCLUDE THE DATE AND INVOICE NUMBER OF THE ORIGINAL INVOICE AND THE REASON FOR RETURN.

MINIMUM ORDER: BECAUSE OF HIGH HANDLING COSTS, NO DEALER DISCOUNT CAN BE GIVEN ON ORDERS UNDER \$5.00

www.legends-yamaha-enduros.com
CONFIDENTIAL DEALER PRICES

PAGE 1	BARONI FORKS		MOTO CROSS		BARONI SHOCKS
	ROAD RACE				ALL 33.00
S MALL	74.63		74.63		
MEDIUM	104.25		108.75		
LARGE	108.75		111.75		
SPECIFY STEM NUMBER					

PAGE 2	BORRANI RIMS	
SIZE	DRILLED	UNDRILLED
18 x 2	12.00	9.60
18 x 2 1/4	13.20	10.80
18 x 2 1/2	14.40	12.00
18 x 3	15.60	13.20
19 x 2	13.20	
19 x 2 1/4	14.40	
19 x 2 1/2	15.60	13.20
19 x 3	15.60	
21 x 2 1/2	15.60	13.20

ROAD OR RACING FRONT BRAKE
COMPLETE WHEEL ASSEMBLY WITH 36 SPOKES
AND BORRANI ALLOY RIMS (SPECIFY WM 2 x 18
OR WM 2 x 19) 95.40
DRUM WITH SPINDLE 83.40
MOTOCROSS HANDLEBAR 4.05
RACING THROTTLES 2.25

PAGE 3	DELLORTO CARBURETORS	
TYPE SS-1 (INCLUDES FLOAT CHAMBER)		
25 mm	44.55	32mm 58.50
26 mm	44.55	33mm 62.25
27 mm	48.41	35mm 62.25
28 mm	48.41	40mm 82.09
30 mm	48.41	42mm 82.09

TYPE UB-BS		TYPE ME-BS
UB20BS-20mm	21.30	15mm 19.95
UB22BS-22mm	25.28	16mm 20.79
UB24BS-24mm	26.48	18mm 21.53
UA 16S-16mm	19.64	

COMPETITION TANKS
DRAGSTER TANK (less petcocks)
3/4 gal. 11.97
1-1/2 gal. 13.97
COMPETITION TANK 10.77
PETCOCKS 1.59 ea.

COSMOPOLITAN MOTORS, INCORPORATED

JACKSONVILLE & MEADOWBROOK ROADS, HATBORO, PA. 19040 (215) OS 2-9100

SOLE U.S. IMPORTERS AND DISTRIBUTORS OF BENELLI MOTORCYCLES / PIRELLI TIRES / AGV AND COSMO HELMETS

PAGE 4 COMPETITION AND CUSTOM SADDLES

SCRAMBLES SADDLE	13.17	THICK FOAM PADDED SOLO SEAT	2.97	
SOLO SADDLE	7.17	FENDER BACK SADDLE	13.17	
SOLO SEAT SPRINGS	.75/pair	STING RAY CUSTOM TANK SEAT/FENDER		
GRAND PRIX CUSTOM DUAL SADDLE	13.17	TANK AND SEAT/FENDER ASSEMBLY	30.00	
PILLION RACING SEAT	5.37	TANK ONLY	16.80	SPECIFY COLORS
LARGE ROAD RACING SADDLE	16.80	SEAT FENDER ONLY	13.20	

PAGE 5 SPARK PLUGS

QTY.	REGULAR	RACING
1-11	.60 ea.	1.25 ea.
12-59	.54 ea.	1.10 ea.
60-over	.48 ea.	1.05 ea.

PAGE 7 PIRELLI TIRES

DEALERS DISCOUNT IS 33 1/3% OFF LIST PLUS EXCISE TAX.
 PIRELLI RIM STRIPS .30 each
 PLASTIC RIM STRIPS .18 each

PAGE 8 BATTERIES

NO. 31L3	4.83
31L4	5.55
3V2	5.55
3L3	6.21

PAGE 9 GENERAL EQUIPMENT

STEEL FENDER	3.00	OFFSET LINK	CONNECTING LINK
CHROME FENDER		1/2 x 3/16" .34	1/2 x 3/16" .17
REAR	4.47	1/2 x 5/16" .34	1/2 x 5/16" .17
FRONT	4.47	REGINA CHAIN	
BRACES	.60 each	1/2 x 3/16" 25 ft. 24.86	Now in 33 ft. rolls \$32.67 net
ROYAL BULBS		1/2 x 5/16" 25 ft. 24.86	Now in 33 ft. rolls \$32.67 net
HEADLIGHT	4.77		
TAIL STOP	3.87		
TORPEDO 43 x 15 mm 15 WATT	2.25		
ALL OTHER TORPEDO BULBS	1.74		

PAGE 10-11

X-80	28.77	HELMETS	
A-6	11.70	PRINCESS	10.77
METALFLAKE	12.90	CASUAL	9.57
B-4	15.30	SEBRING	5.97
A-2	17.97	MONZA 1	11.70
COMPLETE FLIP-UP VISOR-FACESHIELDS	5.96	A4	17.37
REPLACEMENT LENS FOR FACESHIELD	.90		
B-5	11.70		
VISOR	.57		

PAGE 12 GRIPS

GRAND PRIX	1.19	MIRRORS	
AIR CUSHION	.59	#217	1.17
HONEYCOMB	.89	#218	1.77
		#219	1.77

THROTTLES

TOURING	2.25
RACING	2.25
BALLEND LEVER COVERS	.15 pair

PAGE 13 TOURING ACCESSORIES

WINDSHIELDS		UNIVERSAL LUGGAGE CARRIER	9.71	ELASTIC LUGGAGE STRAPS	
SPORT SHIELD	9.00	FOLDING FOOTPEGS	1.35	LS-818	.15
GENERAL MODEL	11.00	SADDLE BAGS	5.97	LS-1012	.20
		(SPECIFY COLOR)		LS-1018	.30
				LS-1030	.45
				LS-1024	.63

PAGE 14-15 GOGGLES

901	.75	909	1.17	EXTRA LENSES	.30 PAIR	922	2.37	EXTRA LENSES	.30 EA.
902	4.17	910	1.77			923	1.77		
903	1.17	911	.59			924	1.77	EXTRA LENSES	.30 EA.
904	.75	912	1.17	EXTRA LENSES	.30 EA.	926	4.77		
905	1.17	913	1.77	EXTRA LENSES	.30 EA.	MAGNETIC GLASS CASE	1.77		
EXTRA LENSES	.30	914	1.77	EXTRA LENSES	.60 PAIR	BUBBLE SHIELD	2.37		
906	3.57	916	4.17	EXTRA LENSES	.75 EA.	VARI SHIELD	5.37	SPECIFY COLORS	
907	4.17	917	4.17			FLIP-UP SHIELD	4.17		
908	1.77	918	4.77			FLAT SHIELD	1.01		
						SNAP KIT	.15		

PAGE 16 CYCLE CLOTHING

RACING JACKETS	1-pc.	RACING SUIT	11.30
#707	4.17	FINGERLESS GLOVES	2.97
#708	4.77	COLOR FULL FINGER GLOVE	4.17
ELASTIC BELT	3.57		

PAGE 17 HOT ITEMS

CYCLE CARRIER	10.17/PR
SPRAY PAINT	1.46
CHAIN OIL	.49

BENELLI 250 FOUR MODEL 2.47

COSMO MINI-BIKE CLUTCH				
1-11	12-23	24-95	96+	SPECIFY SIZE
5.25	4.80	4.49	3.99	

FOR BOX OF 6 ONLY

	NET	ADVERTISING ALLOWANCE	NET
BENELLI SWEAT SHIRT	3.75	1.25 EA.	2.50 EA.
BENELLI DELUXE T-SHIRT	2.50	1.00 EA.	1.50 EA.
BENELLI T SHIRT	2.22	1.00 EA.	1.22 EA.
BOYS T SHIRT	1.25		

general equipment for all motorcycles



STEEL FENDER

High quality steel fender with universal braces. Black enamel finish with white pin striping. 4" wide, fits most machines. 5.00 ST-F



CHROMED STEEL FENDER

For 18" or 19" wheels. Makes any machine more attractive. Rear fender 4" (w/o braces) 8.95 CF-R
Front fender 5" (w/o braces) 8.95 CF-F
Braces 1.00 CF-B

www.legends-yamaha-enduros.com



REGINA EXTRA MOTORCYCLE CHAIN

This high quality Chain will last the lifetime of the machine if properly maintained. Will not stretch under the roughest conditions.

Pitch	Width	Roller Dia.	25 ft. Roll
1/2"	3/16"	.335	41.44 MC12-316
1/2"	5/16"	.335	41.44 MC12-516
Cut to Your Length			1.60 (per ft.)



CONNECTING LINK

1/2" x 3/16"28 CL12-316
1/2" x 5/16"28 CL12-516



OFFSET LINK

1/2" x 3/16"56 OL12-316
1/2" x 5/16"56 OL12-516



**FINEST QUALITY
MOTORCYCLE BULBS.
FIT MOST MOTORCYCLES.**

		Base	Volt	Watt	Box of 10
BA 20 D	Head Light	20mm	6	15 / 15	7.95
BA 20 D	Head Light	20mm	6	20 / 20	7.95
BA 20 D	Head Light	20mm	6	25 / 25	7.95
BA 20 D	Head Light	20mm	6	35 / 35	7.95
Tail Stop Bulb		15mm	6	21 / 3	6.45
		Size			
Torpedo	Tail Light	38 x 7mm	6	3	2.90
Torpedo	Tail Light	31 x 7mm	6	3	2.90
Torpedo	Tail Light	38 x 7mm	6	5	2.90
Torpedo	Tail Light	39 x 11mm	6	10	2.90
Torpedo	Tail Light	43 x 15mm	6	15	3.75

cosmo agv helmets

AGV helmets are designed and constructed by the world's largest helmet manufacturer. The plant in Valenza, Italy, is constantly testing new materials and ideas to maintain their position as world leaders in the field.

The superb full coverage helmets meet the standards of virtually every major testing organization such as AMA Group 1, USSI Z90.1, all states requiring approvals. They are considered by authorities as the most perfectly pro-

portioned helmet and because of new improvements as the safest. Recently even the Snell Foundation has approved several AGV helmets.

No component is substituted because of price. Genuine kid skin leather and nylon reinforced fiberglass is used. New resilient liners trimmed in satin and tough epoxy outer coatings enhance the safety and appearance.



X-80 SUPER INTEGRAL

The most protective headwear available. Meets or exceeds every U.S. standard of approval. Full coverage and unrestricted vision. Complete with eye shield. Yellow, blue or red 47.95

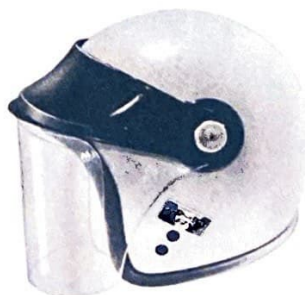
NEW "ULTIMATE" A-6

AMA Group 1 & USSI Z90.1 approved. Greatest all around protection. Nylon reinforced fiberglass shell, resilient inner shell. Cool, comfortable liner. Reinforced chin strap. Yellow, white, red, blue, orange (specify color) 19.50. Metaflake, 20.50.



B-4

New York State, Snell, AMA, SCCA and USSI Spec. APPROVED. Meets the standards of Z 90.1. Ultra modern styling. Full coverage protection. Resilient inner shell with full foam padded liner and chin strap. Constructed from new polycarbonate material. Side vents, racing stripe, and snap on peak. \$25.50



A-2 "ULTIMATE" SUPER

6¾ to 7¾
A-2. "ULTIMATE" SUPER HELMET WITH FLIP-UP VISOR AND FACESHIELD—New distortion-proof removable faceshield. Faceshield or Visor may be used separately. White \$29.95
Complete Flip-Up Visor-Faceshield—Fits any Helmet \$9.95
Replacement lens for faceshield with fasteners \$1.50



B-5

A three-quarter jet helmet at the price of a shorty. Meets the standards of Z 90.1. Same styling and construction as the world famous B-4, but slightly shorter on the sides \$19.50

CHIN CUP

Semi-rigid molded plastic chin cup fits all helmet chin straps. 50 to a box. Each \$.30



VISOR

Snap-on heavy plastic construction. Will fit AGV and most other popular helmets. Snaps 3½" apart. Black or White. \$.95

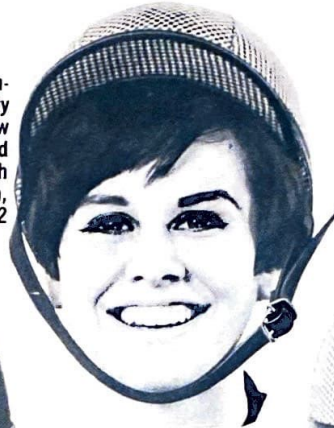


cosmo agv helmets



THE "PRINCESS"

This is the one for fashion-conscious girls. Combines safety and beauty. A revolutionary new DuPont safety material covered in plush velour. Complete with bow in back. Small, medium, large only 17.95 NH-2

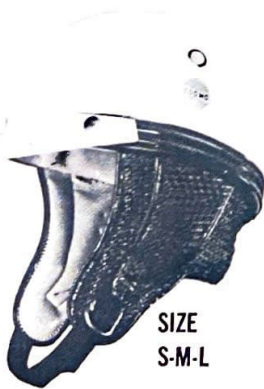


THE "CASUAL"

This handsome half-style helmet combines safety plus the good looks of a sports cap. Fully adjustable web harness. For men and women. Black and brown houndstooth design. Small, medium, large only 15.95 NH-3



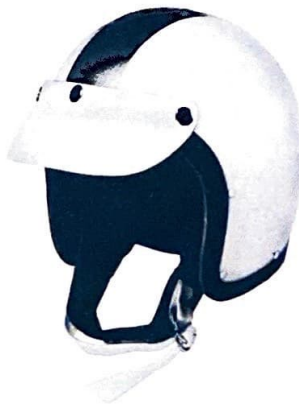
www.legends-yamaha-enduros.com



SIZE
S-M-L

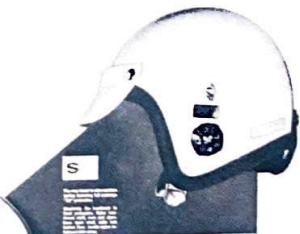
"SEBRING"

This beautiful half style helmet is constructed from a revolutionary new bullet proof material. Fully adjustable, web harness and liner. Construction of foam padded vinyl leather, with beautiful cross-stitch pattern. All Sebring helmets complete with vent holes and snap-on peak 9.95



"MONZA 1"

The very latest in ultra modern styling, featuring full coverage protection, styrofoam inner shell, with full foam padded liner and chin strap. Constructed from revolutionary new bullet proof material. Complete with side vents, racing stripe and snap-on peak 19.50



HELMET DISPLAY

This good looking 3 color helmet counter display is free with every dozen helmets.

NEW ULTIMATE A-4

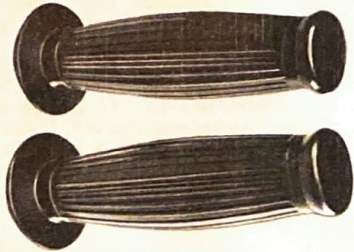
New York State, AMA Snell, SCCA and USSI Spec. APPROVED. Meets the standards of Z 90.1. Maximum head protection ever offered. Nylon reinforced fiberglass shell, cork and resilient inner shell, satin and leather liner. Double nylon reinforced chin strap. Available in white, red, blue, orange, yellow and black 28.95



ALL HELMETS AVAILABLE IN SMALL, MEDIUM, LARGE AND EXTRA LARGE

touring accessories

HAND GRIP SETS



GRAND PRIX GRIPS

Special for the "superbike!" Sturdy, double wall eliminates vibration. Ribbed inner wall acts as thermal barrier. Warm in winter, cool in summer. For 7/8" bars. Length 5 1/4". \$1.99 CP 22/25



AIR CUSHION GRIPS

Beautiful 2-color hand grips. Ribbed for sure grip and air-cushioned against vibration. Soft and comfortable.
 For 7/8" bars99 2222A
 For 1" bars99 2727A
 For Honda 5099 18/25.4



HONEYCOMB GRIPS

Unique design and appearance. Revolutionary directional vanes guide air under hands providing dry, comfortable grip. Pliable, vibrationless.
 For 7/8" bars 1.49 2224H
 For 1" bars 1.49 2727H

ALL GRIPS ARE AVAILABLE IN BLACK, CANDY APPLE RED, CANDY BLUE AND LIGHT GRAY. PLEASE SPECIFY.

THROTTLES



TOURING THROTTLE

Smooth action, comfortable ribbed grips. Built-in cable adjuster and spring tensioner. Durable chromed steel.
 For 7/8" bars 3.75 TT



FAST ACTION RACING THROTTLE

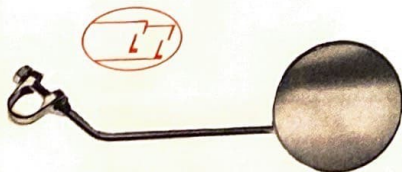
1/4 turn from idle to wide open. For competition and limited street use. Lightweight with built-in cable tensioner. With black ribbed grips.
 For 7/8" bars 3.75 RT

BALL END LEVER COVERS



Indented for safe, sure finger-action control. Colors to match hand grip sets. Per pair .25

MIRRORS



Shock proof, distortion free. Can be mounted to all motorcycles and mini-bikes. All hardware chrome finished. 10" angled stem.
 1.95 # 217



Heavy chrome steel 8" stem. Wide, tinted mirror. Distortion free. Fits all machines.
 2.95 # 218



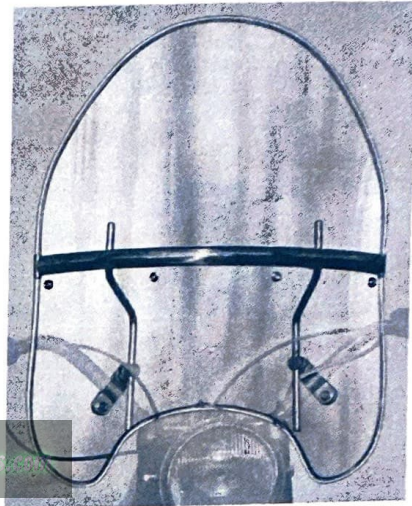
Same as TT Deluxe mirror # 218 but with 12" stem 2.95 # 219

touring accessories



SPORT SHIELD

For most lightweight motorcycles and scooters. Adjustable arms clamp on $\frac{7}{8}$ " or 1" bars. Clear top, choice of clear, blue or green bottom. 12.50 WS-S



GENERAL MODEL

For all machines. Reinforced top and bottom. Equipped with snaps for skirt. Clear top. Choice of clear, blue or green bottom. 16.50 WS-L



UNIVERSAL LUGGAGE CARRIER

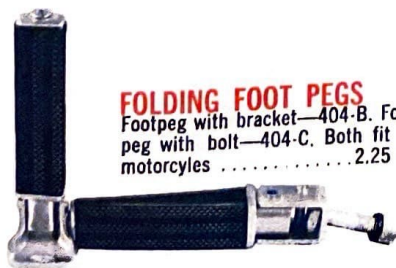
This handsome luggage carrier will fit all machines. Constructed of the finest steel tubing. Complete with mounting hardware 12.95 LR-U



ELASTIC LUGGAGE STRAPS

Heavy duty straps with plastic protective tips. Come in five sizes.

Model	Hooks	W	Inch	Price
LS-818	2	8	18	.25
LS-1012	2	10	12	.40
LS-1018	2	10	18	.60
LS-1024	4	10	24	1.25
LS-1030	3	10	30	.90



FOLDING FOOT PEGS

Footpeg with bracket—404-B. Footpeg with bolt—404-C. Both fit all motorcycles 2.25 Pr.



SADDLE BAGS

New light-weight tie-on saddlebags constructed from genuine U. S. naugahyde. This vinyl material is scuff and abrasion resistant and is not affected by grease, oil, acid or weather. Bags measure 14" x 10" x 4". Black—SB-B. White—SB-W. Red—SB-R, Black—SB-BE.

Only 9.95 Pr

baruffaldi goggles

Baruffaldi goggles are produced by Italy's largest optical manufacturer.

Each goggle is constructed like a precision optical instrument and undergoes testing for distortion-free clarity. The finest scratch resisting materials are used and top designers insure stylish, well fitting products. All goggles adjust to any head size.

COLORS—CLEAR, YELLOW, GREEN



901 SPORTSMAN GOGGLES
Heavy plastic frame. Elegant styling. Clear, green, amber.....\$1.25



905 WRAP-AROUND SPORT GLASSES
Lightweight plastic frame. Interchangeable pivoting plastic lens.
With case.....\$1.95
Extra lenses.....\$0.50



909 ECONOMY CYCLE GLASSES
Unbreakable nylon frame, interchangeable plastic lens, ventilated folding side shield.....\$1.95
Extra lenses, pr.....\$0.50



902 THE MIRACLE LENS
In sodium yellow that turns automatically smokey-grey in the sun—returns to yellow in the shade. Hand-solely installed in pliable wrap around frame with built in vents. Packed in individual display boxes \$6.95



906 PANORAMIC DUAL LENS GOGGLES
Clear lens remains in goggle. Green or amber nite lens snaps over. Can even be changed with one hand while riding to adjust to weather conditions. Directional vents. Price includes clear, green and amber lens \$5.95



910 COSMO RING GOGGLES
Unique new goggles for men or women, completely encircle the wearer's field of vision. Gold plated frame. Lens supplied in clear, smoke or amber.....\$2.95



903 FLIP-UP FACESHIELD
Fits over glasses. Pivots up on headband. Can be worn with helmet. Protects almost complete face.....\$1.95



907 EXTRA LARGE PANORAMIC GOGGLES
A magnificent glass. Molded plastic frame. Sponge rubber cushion and chamois liner, directional vents. Wide, leather reinforced headband. Price includes green and amber interchangeable lenses.....\$6.95



911 SLIM-LINE SPORT GLASSES
Frames in matching color.....\$0.99



904 ECONOMY "WRAP-AROUND" SPORTS GOGGLES
Lightweight frame, wide vision plastic lens, in plastic bag.....\$1.25



908 DELUXE CHILDREN'S GOGGLES
For ages 2 to 12 (and women) high quality adult goggles. Close fitting for maximum protection. Sponge rubber liner, adjustable elastic band. Price includes green and amber interchangeable lenses.....\$2.95



912 WIDE VISION GOGGLES
Soft, natural rubber frame, interchangeable lens, fits over eyeglasses.....\$1.95
Extra lenses, ea.....\$0.50

www.legends-yamaha-enduros.com

baruffaldi goggles



913 ALL-WEATHER GOGGLES
Soft, natural rubber frame, interchangeable removable rain/sun visor, fits over eyeglasses..... \$2.95
Extra lenses, ea..... \$0.50



914 LIGHTWEIGHT FOLDING GOGGLES
2 oz.—Changeable plastic lens. Chrome and natural rubber air cushioned frame..... \$2.95
Extra lenses, pr..... \$1.00



916 SAFETY GLASS RACING GOGGLES
Shatterproof laminated optical glass, foam and leather face cushion, chrome frame. Plastic, vented side view panels give maximum lateral vision. With case, clear..... \$6.95
Each replacement lens..... \$1.25



917 DELUXE WRAP-AROUND SPORT GLASSES
Interchangeable plastic lenses. Elastic spring hinges. Chrome frame. A magnificent goggle. Must be seen to be appreciated. With case..... \$6.95
Extra lenses, pr..... free w. goggle



918 GRAND PRIX RACING GOGGLES
Absolutely the finest on the market. Contour formed, hi density molded. Rubber frame, chamois lined. Unbreakable "Durotic" glass lenses..... \$7.95



922 EXTRA DEEP RUBBER FRAME GOGGLES
Extra depth permits maximum visibility. A really deluxe goggle. Interchangeable lenses..... \$3.95
Extra lenses, ea..... \$0.50



923 CURVEX GLASSES
Distortion free lenses. Unbreakable frame. Modern styling. With case..... \$2.95



924 OVER-GLASSES GOGGLE
Now for the first time, goggles that produce no discomfort to the wearer. Interchangeable lenses. With case..... \$2.95
Extra lenses, ea..... \$0.50



926 NIGHT DRIVING GLASSES
Sodium yellow lenses, gold plated frame, mirrored upper left corner to reduce headlight glare. With case..... \$7.95



MAGNETIC DRIVING GLASS CASE
Adheres to dash. Genuine pigskin, photo window. Complete with yellow & green sunglasses..... \$2.95

USSI Z 2.1 APPROVED



SNAP-ON BUBBLE SHIELD
New design prevents inner wind turbulence. Distortion-free, shatterproof plastic available in clear, green, amber, blue. Adjustable snaps fit any helmet... \$3.95



VARI-SHIELD
New non-fogging, shatterproof faceshield. Slides up or down to any position. Integrally molded sun visor. Fits on most helmets. Durable, distortion-free. In clear, amber, and smoke..... \$8.95



STRAP-ON FLIP-UP SHIELD
The most efficient optical protection ever offered. Must be seen to be appreciated. Rubber strap and aluminum band fit any helmet. Tension adjusting knobs. Perspex shield and dark green or amber visor 1/10" thick. Visor can be used by itself..... \$6.95

Z87.1 APPROVED



FLAT SHIELDS
Full wrap-around distortion-free protection. Flexible and tough. Adapt to all full coverage helmets. 5 snaps; 3 regular on top and 1 on each side. Snap Kit for easy mounting of side snaps. In clear, amber and smoke. Flat shield..... \$1.69
Snap Kit..... \$0.25

cycle clothing



RACING JACKETS

100% nylon jackets are light, water repellent and designed especially for motorcyclists. Elastic around cuffs keeps air out. Two racing stripes on each jacket. Small, medium, large, extra large.

Style #707 Side pocket, snap collar. Sky blue or orange... \$6.96 J707
 Style #708 Breast pocket, draw string at bottom, reversible collar. Navy blue..... \$7.95 J708



1-PC. RACING SUIT

Can also be worn as mechanics coverall. Made of Italy's finest poplin with slim continental styling. As worn by leading race drivers. Blue or white. Order with code plus size. Blue-RSB, White-RSW. Sizes: Sm. 36-38, Med. 40-42, Lg. 44-46, X lg. 48-50..... \$16.95



AGV FINGERLESS DRIVING AND RACING GLOVES

Genuine leather, padded palms, linen mesh backs. Positive grip and maximum comfort... \$4.95 FDG-M

Genuine leather, padded palms, ventilated leather backs, positive grip and maximum comfort. \$4.95 FDG-L

FULL FINGERED RACING GLOVES... 6.95 FF-L



ELASTIC BELT

For positive back and kidney support under all riding conditions. Of the finest elastic with leather ribbing to prevent belt from shifting. Good looking and comfortable. Sizes: 26, 28, 30, 32, 34, 36, 38, 40, 42..... \$5.95 EB

hot items



CYCLE CARRIERS

Take your cycle along with you. Attaches to any bumper.

3" Width..... CC-E-3" 16.95 Pr.
4" Width..... CC-E-4" 16.95 Pr.



SPRAY PAINT

Highest quality lacquer paint in long lasting 16 oz. aerosol cans.

Candy apple red CAR-P/1.95
Candy apple blue CAB-P/1.95
Silver base SB-P/1.95

CHAIN OIL

Keeps chains running smoother, longer, quieter. 6" tube49

BENELLI SWEAT SHIRT. Assorted colors, fleece lined. Multicolored printing front and back. S, M, L, XL. 5.00 BS

BENELLI DELUXE T SHIRT. Assorted colors with pocket. Multicolored printing front and back. S, M, L, XL. 3.35 BDT

BENELLI T SHIRT. White. Multicolored printing front and back. S, M, L, XL. 2.95 BT

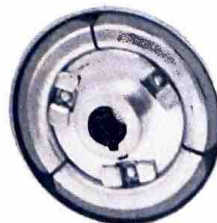
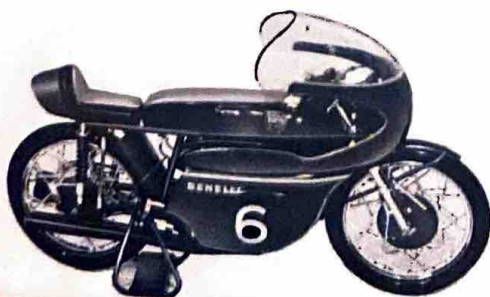
BOYS' T SHIRT. White. 2-color printing on front. S, M, L. 1.95 BBT

BENELLI SWEAT SHIRTS & T-SHIRTS



BENELLI 250-4 MODEL

Actual scale model of 1969 World Championship machine. Challenging and fun to build. Suspension really works. Only 3.95

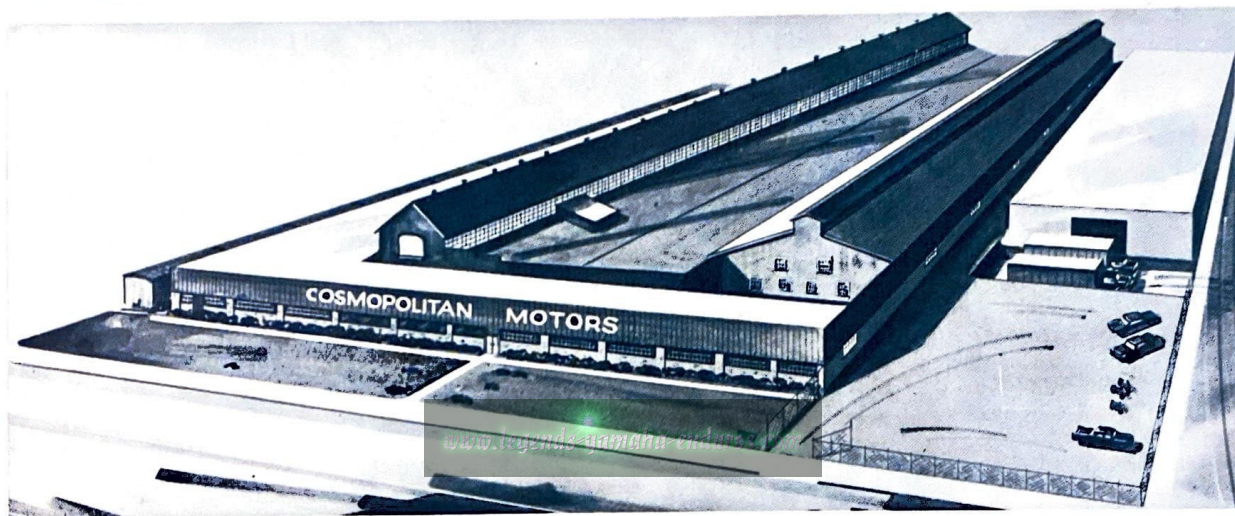


NEW COSMO "SUPER MINI BIKE CLUTCH"

Larger in size than most other mini bike clutches for extra performance. Extra-thick metal-impregnated lining with increased surface delivers maximum torque to rear wheel with reduced slippage. Actually increases acceleration! Specify $\frac{5}{8}$ " or $\frac{3}{4}$ " Only 12.95

COSMOPOLITAN MOTORS, INC.
JACKSONVILLE & MEADOWBROOK ROADS
HATBORO, PENNSYLVANIA 19040 (215) OS 2-9100

SOLE U.S. IMPORTERS AND DISTRIBUTORS OF BENELLI MOTORCYCLES / PIRELLI TIRES / AGV AND COSMO HELMETS



Cosmopolitan Motors' new 68,000 square foot, one story building is one of the largest facilities in the country devoted to motorcycles, mini-bikes and accessories. It has a 6 car rail siding and is located 5 minutes from the Willow Grove exit of the Pennsylvania Turnpike, just north of Philadelphia.

"Cosmo" is the U.S. distributor of Benelli motorcycles and mini-cycles, Pirelli tires, AGV helmets and other well known motorcycle accessories. They have been in the motorcycle business since 1949.

Modern facilities such as a computerized invoicing center help to provide fast, efficient service which is personally provided by the accessories and shipping departments. Other features include a photography studio, a complete training center, and advanced racing and experimental department and a dynamometer room.

Every effort is made to ship orders the same day as received. For quality cycle accessories at budget prices . . . go Cosmo!

